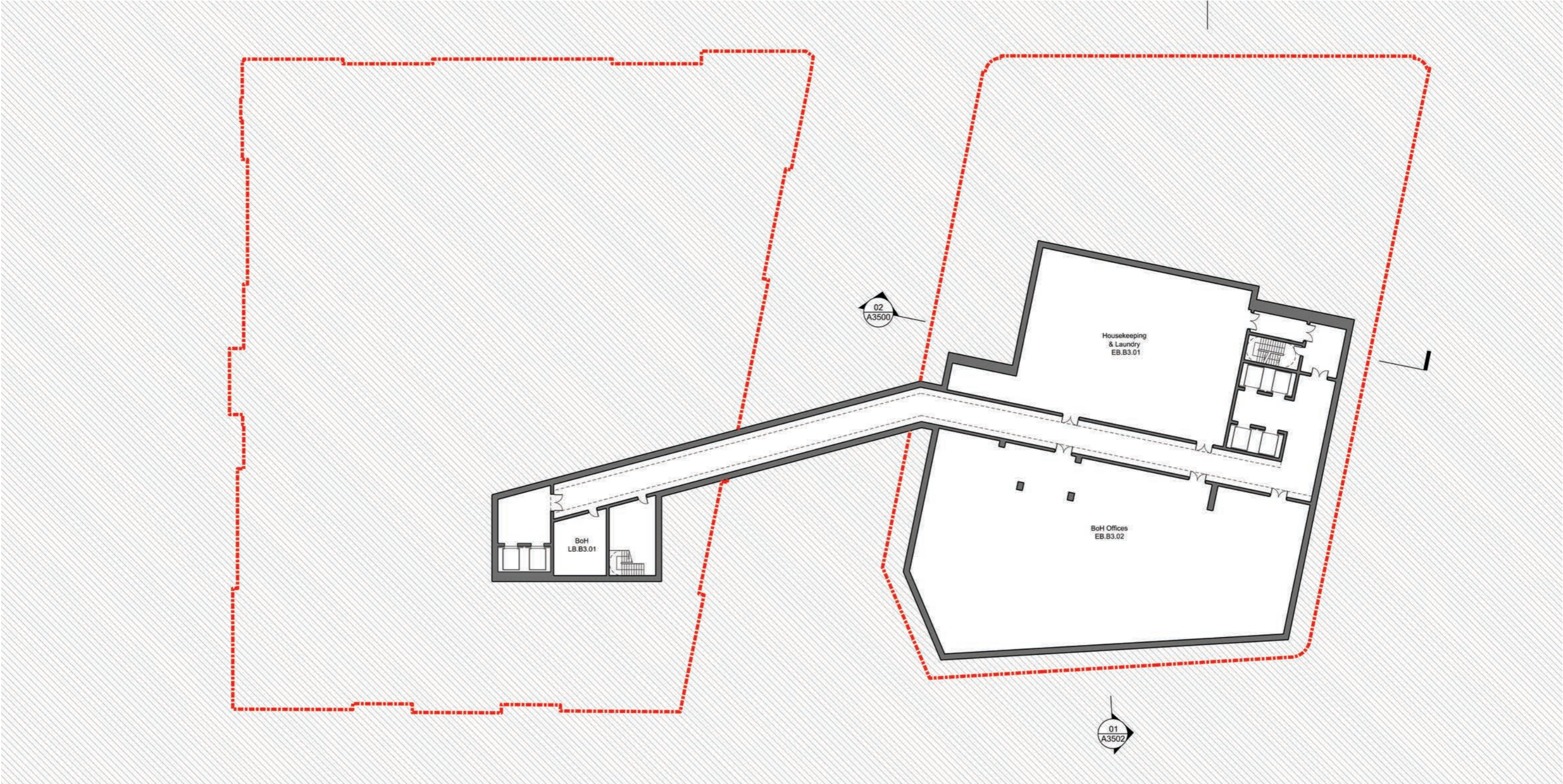


The Sandstone Precinct

Dept. of Education
Floor plans

Basement level 03

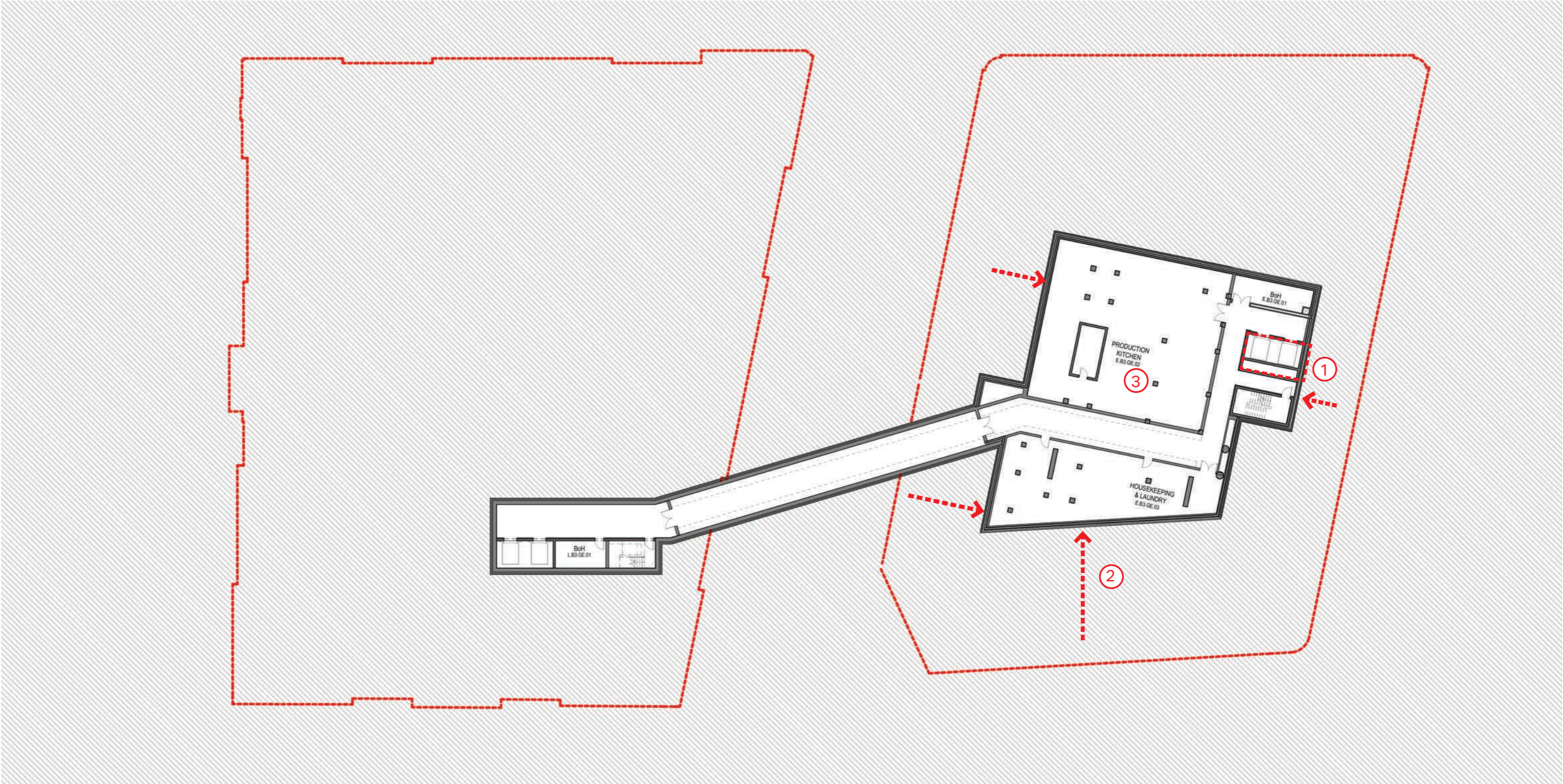
—
DA



Basement level 03

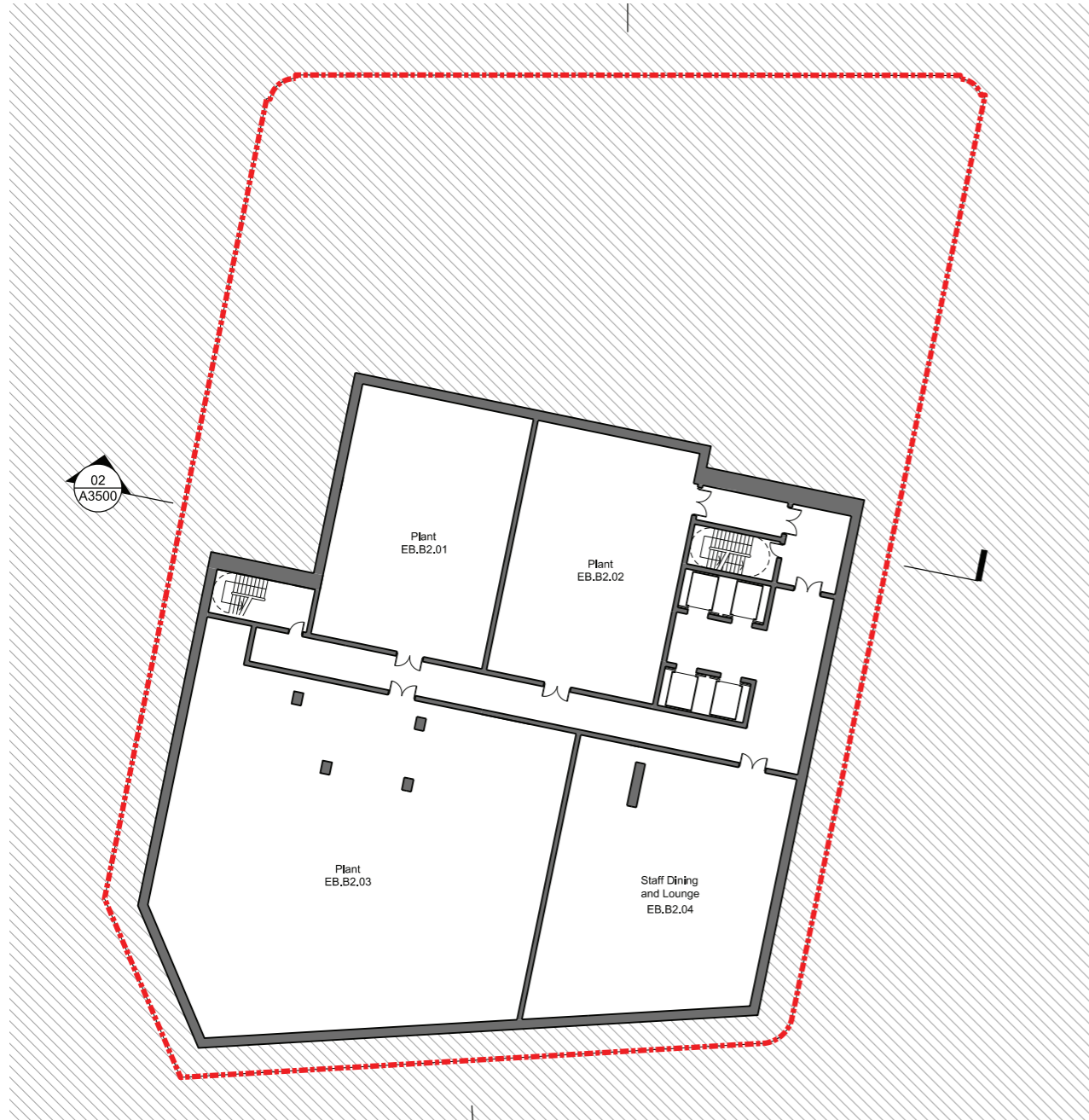
—
Proposed

- Notes**
- 1. Reduction of 4 BoH lifts to 2 from the basement levels to Farrer Place.
 - 2. Extent of basement excavation reduced following geo-technical investigations
 - 3. Relocation of production kitchen to B3



Basement level 02

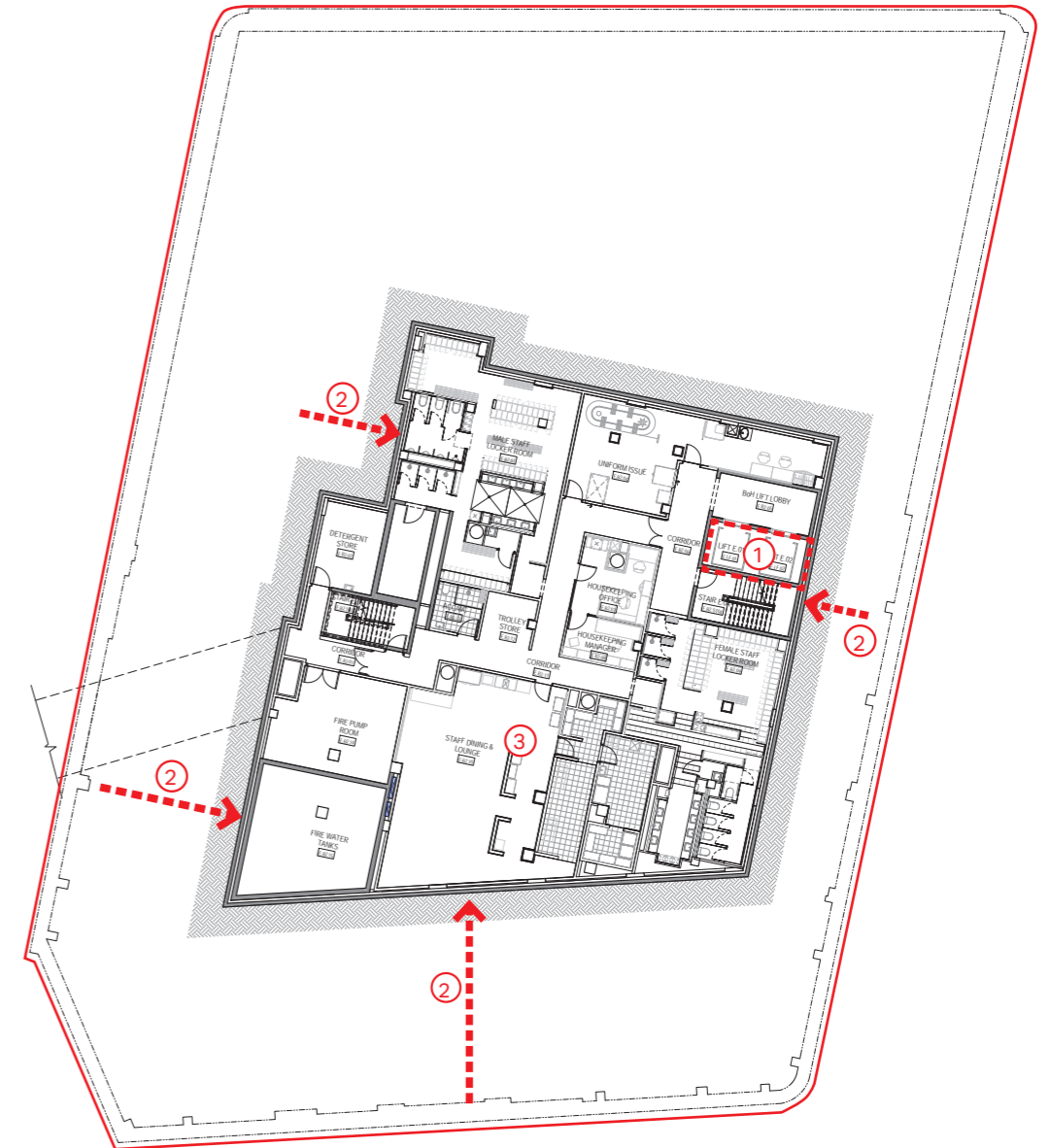
—
DA



Proposed

Notes

1. Reduction of 4 BoH lifts to 2 from the basement levels to Farrer Place.
2. Extent of basement excavation reduced following geo-technical investigations
3. Relocation of staff facilities from B1 to B2

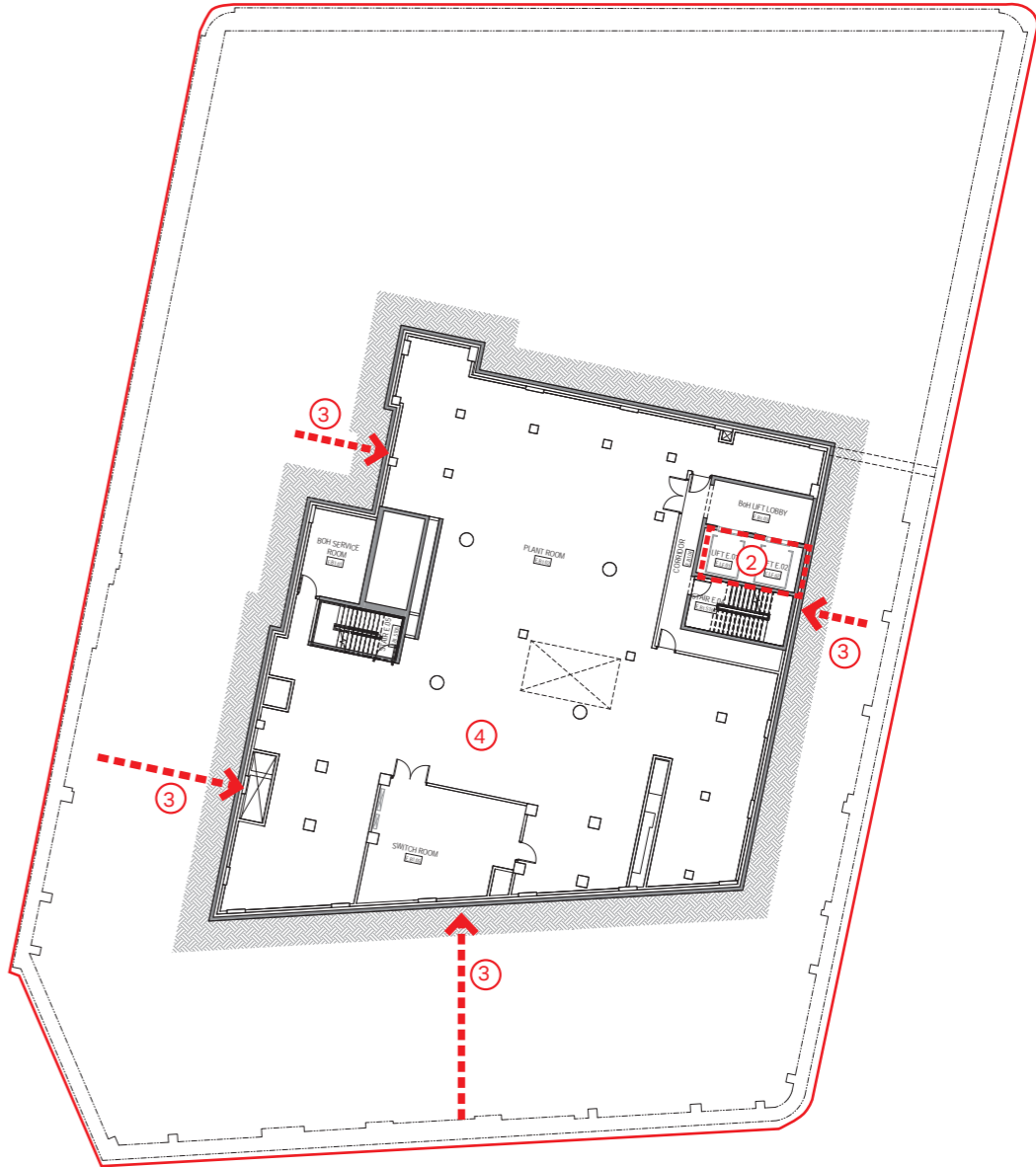
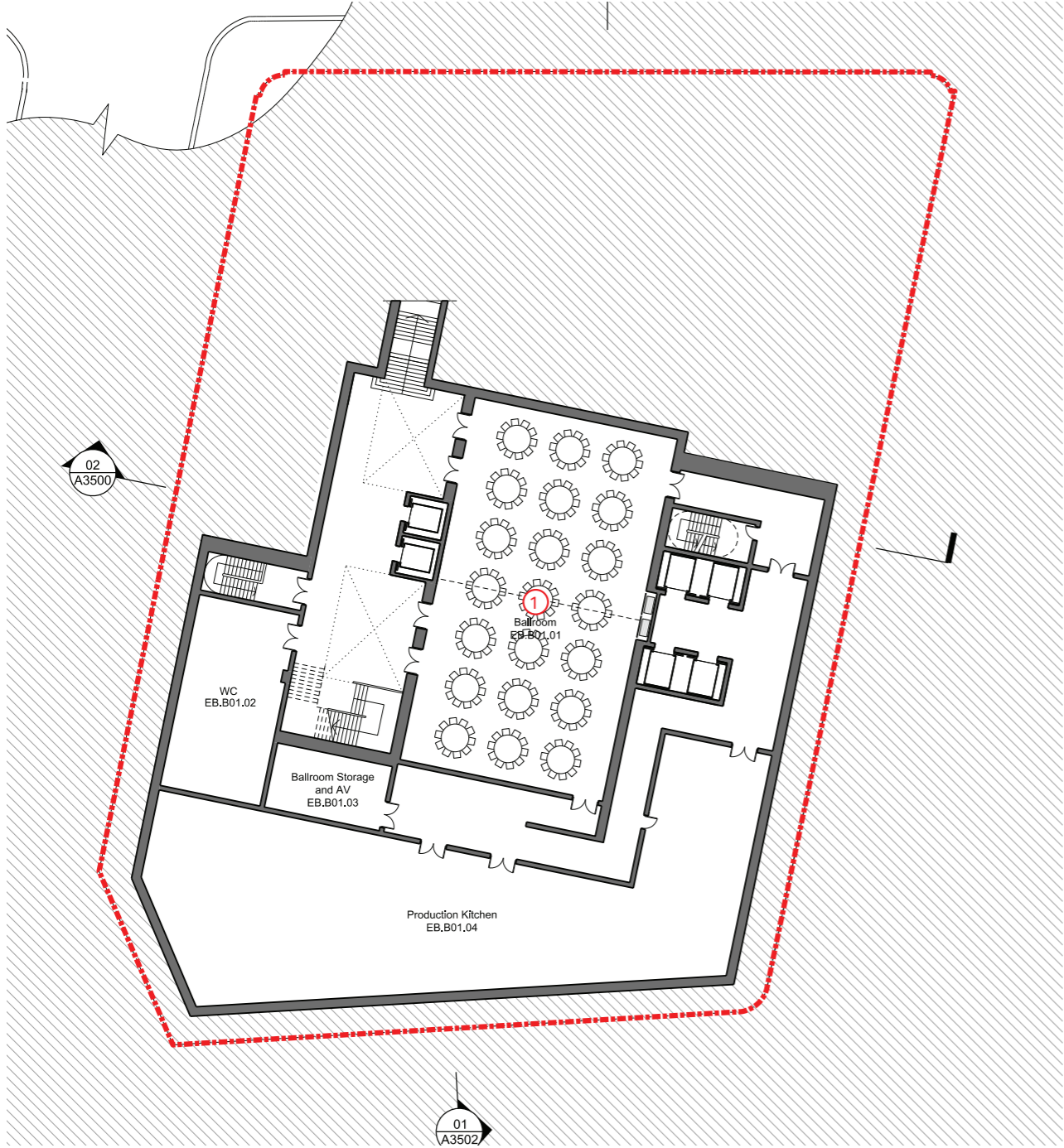


Basement level 01

DA

Proposed

- Notes**
- 1. Ballroom removed
 - 2. Reduction of 4 BoH lifts to 2 from the basement levels to Farrer Place.
 - 3. Extent of basement excavation reduced following geo-technical investigations
 - 4. Relocation of plant floor from B2 to B1



Bridge Street level

DA

Proposed

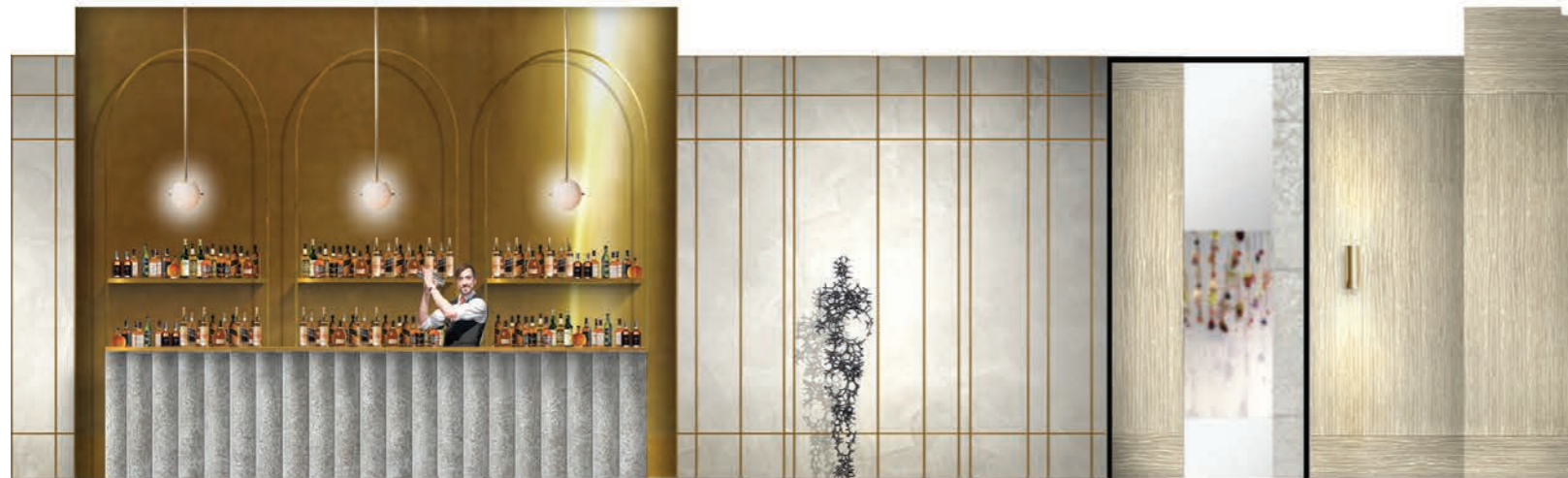
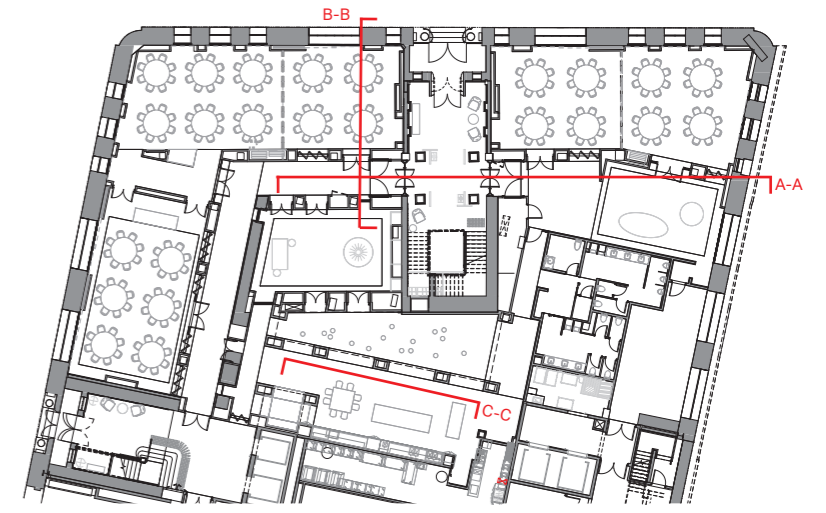
Notes

1. Removal of ballroom
2. Reduction of 4 BoH lifts to 2 from the basement levels to Farrer Place.
3. Loading bay relocated
4. Pre-function space relocated from west. Additional function and pre-function areas created- home kitchen and triple height sculpture garden
5. Additional function room
6. Eastern escape stair and staff entry relocated to increase space at Farrer Place level for the restaurant
7. Secondary luggage entrance and storage
8. Reconfigured BoH area
9. Heritage wall retained as per CoS Heritage Officer requirements



Bridge Street level- function

Function & pre-function spaces



Section A-A- Bridge Street entry and pre-function bar spaces



Section B-B- Function room and heritage doors through to Bridge Street entrance



Section C-C- Display kitchen and chefs table

Farrer Place

DA

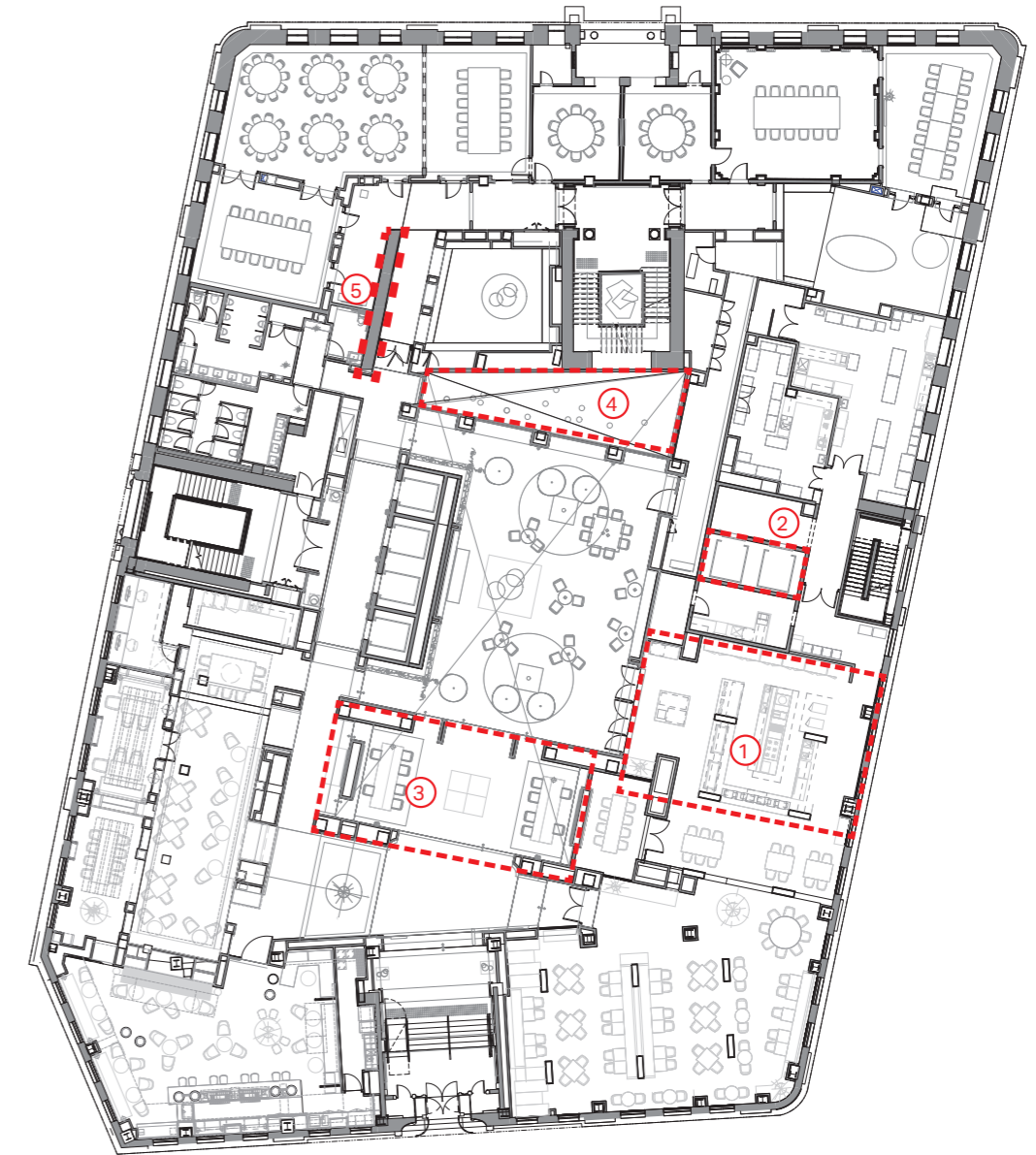
Proposed

Notes

1. BoH core moved north to create a larger restaurant and open kitchen space
2. Reduction of 4 BoH lifts to 2 from the basement levels to Farrer Place.
3. Reception and concierge relocated to central, double height courtyard area.
4. Triple height void with views down to sculpture garden
5. Heritage wall retained as per CofS Heritage Officer requirements



NOTE:
Public realm shown
indicatively, subject to

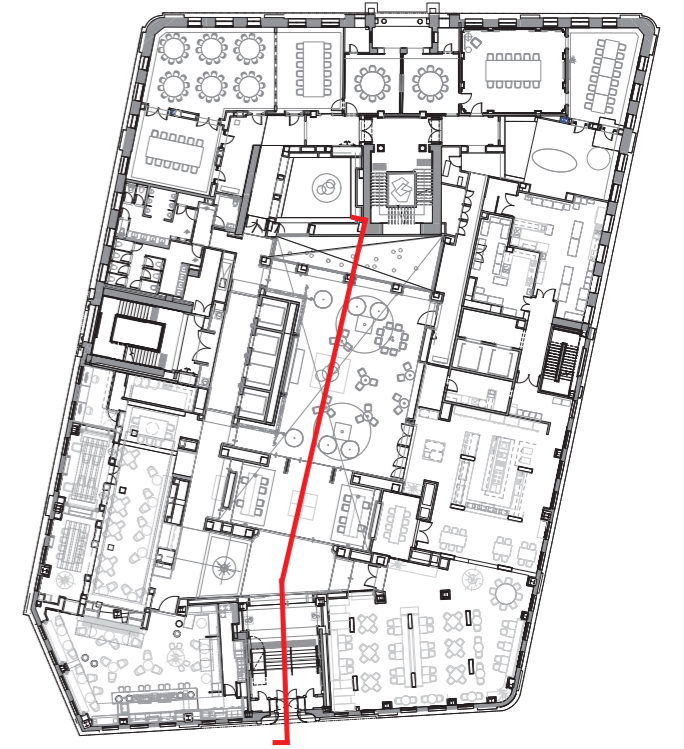


Arrival and courtyard

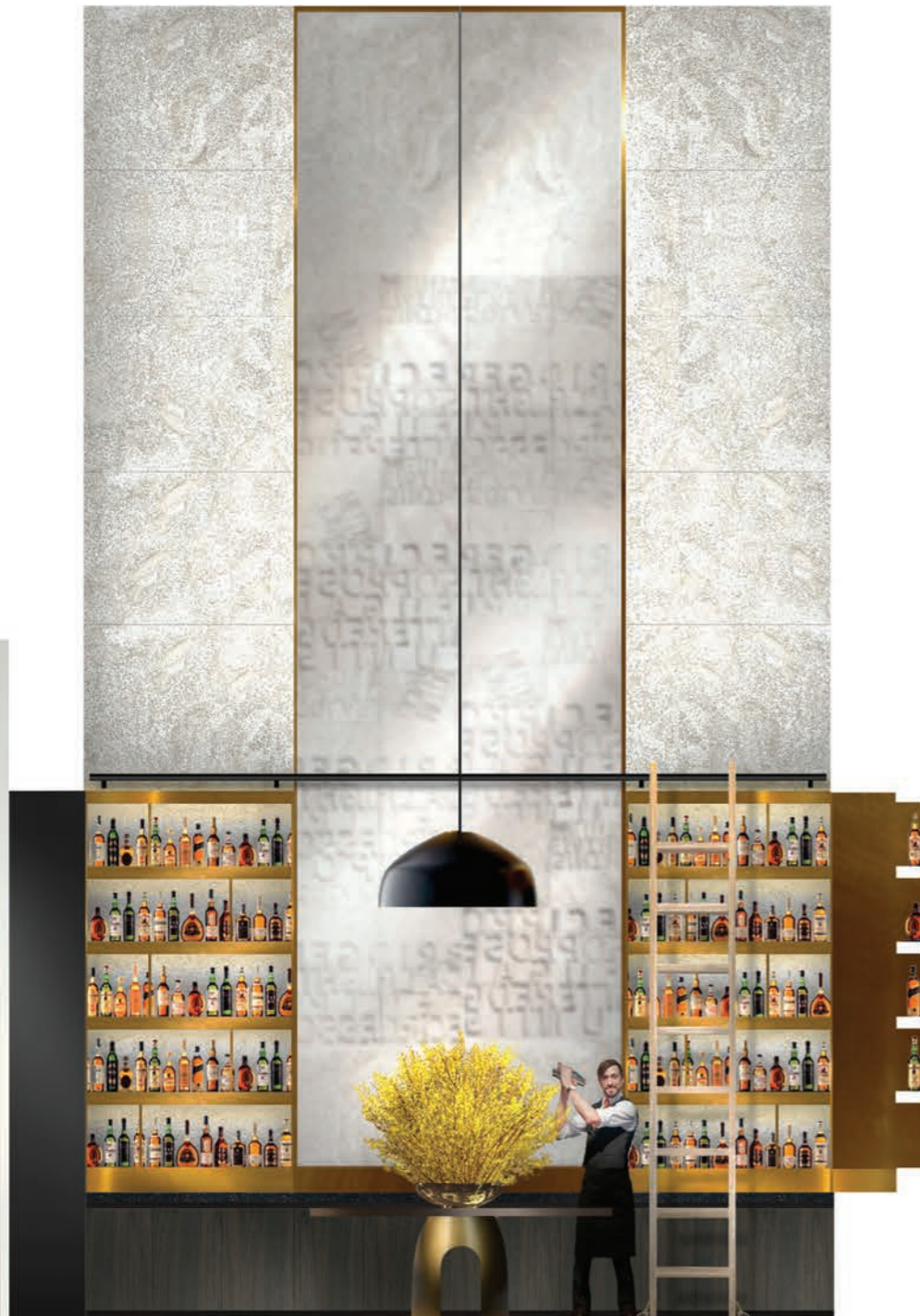
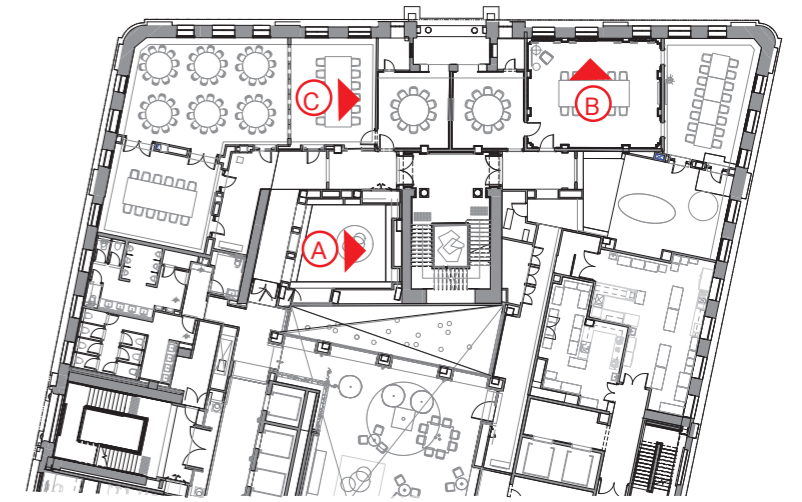
Farrer Place level

Notes

1. Farrer Place entry vestibule
2. Arrival lobby
3. Double height reception and concierge
4. Courtyard- feature water wall
5. Triple height sculpture garden and pre-function area
6. Display kitchen- function
7. Pre-function bar



Farrer Place - Proposed



A. Double height pre-function bar



B. Ministerial Boardroom with heritage timber wainscoting



C. Private function room