



**Statement of Access
Trees for Removal on Eastern Boundary**

BB Wilson Property Pty Ltd
C/o Oscar Brady
oscar.brady@billbergia.com.au
Pacific Hwy between
Wilson St & O'Brien St
Chatswood NSW 2067
2024

8th of May

1.1 BB Wilson Property Pty Ltd commissioned an Arboricultural Impact Assessment and TMP in relation to trees at Pacific Hwy between Wilson St & O'Brien St Chatswood NSW 2067.

1.2 The assessment was conducted on the 13th of December 2023, by Jim McArdle B.Ed. Sci (ACU), Dip. Arb AQF L5 (Ryde), Tree Risk Assessment Qualified (TRA), Quantified Tree Risk Assessment (QTRA) & Tree Contractors Association of Australia (TCAA) Vice President.

1.3 Tree management measures are regulated by Willoughby Development Control Plan 2006 (DCP) and Willoughby Local Environmental Plan 2012 (LEP).

1.4 *Statement of Access – Trees for Removal on Eastern Boundary:*

In response to point 2.a. of the Sydney Trains RFI letter, dated 9/04/0223, we confirm that the removal of the existing trees along the Eastern boundary of the site (next to the rail line) can be done from within the site and will not require access into the rail corridor or rail corridor airspace.

These trees are numbered 1A, 1B, 1C, 2 and group 79 in Table 2 "Tree Schedule" from the Arborist Impact Assessment (December 2023), page 8.

Maps provided on following page.

Maps

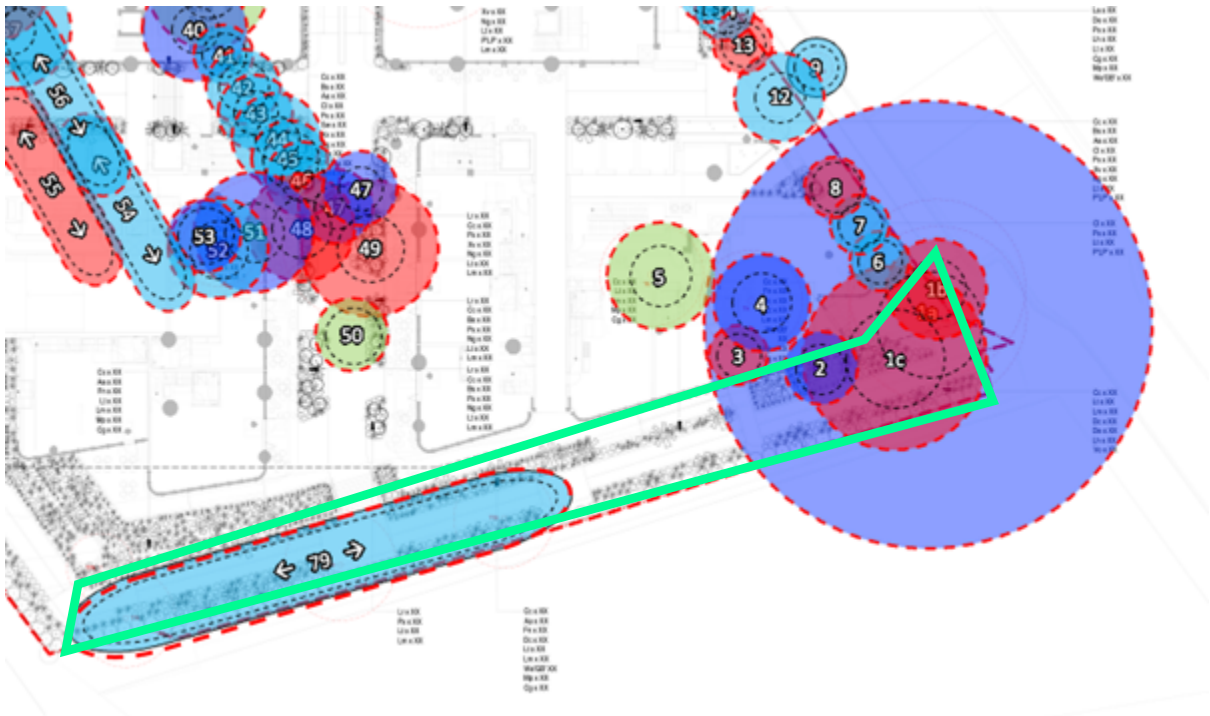


Figure 1: Screenshot of Map A in Arborist Impact Assessment (December 2023), page 32. Relevant trees outlined in green.



Figure 2 Aerial site map of Pacific Hwy between Wilson St & O'Brien St Chatswood. Relevant trees outlined in green.



Figure 3. Panarama view of the corridor at between Wilson St & O'Brien St Chatswood.

DISCLAIMER

McArdle Arboricultural Consultancy Pty Ltd does not assume responsibility for liability associated with the tree on/or adjacent to this project site, the future demise and/or any damage which may result therefrom. They take care to obtain all information from reliable sources. All data has been verified insofar as possible; however, the consultant can neither guarantee nor be responsible for the accuracy of information provided by others.

McArdle Arboricultural Consultancy Pty Ltd cannot be held responsible for any consequences as result of work carried out outside specifications, not in compliance with Australian Standards® or by inappropriately qualified staff. If further investigations such as, aerial, drill and root test are recommended, the report shall not be considered final until all investigations have been completed, as further defects may be found.

STATEMENT OF LIMITATIONS

McArdle Arboricultural Consultancy Pty Ltd makes every effort to accurately identify current tree health and hazards. Results may or may not correlate to actual tree structural integrity. There are many factors that may contribute to limb or total tree failure. Not all these symptoms are visible. There can be hidden defects that may result in a failure even though it would seem that other, more obvious defects would be the likely cause of failure. All standing trees have an element of unpredictable risk.

The inspection was limited to a visual ground examination of the tree, without aerial inspections and below ground excavations. The assessments are limited and do not include specialised analysis. No internal diagnostics, aerial inspection and pathology test were conducted. Sketches, diagrams, graphs, and photographs in this report, being intended as visual aids, are not necessarily to scale.

Consulting Arborist L5
Jim McArdle



B.Ed. Sci (ACU).
Dip of Arboriculture AQF Level 5.
Quantified Tree Risk Assessment (QTRA) Registered Member
Tree Contractors Association of Australia (TCAA) Vice President.



Unit 12/19 Reliance Drive Tuggerah NSW 2259
(02) 4351 3322
info@mcardlearborist.com.au
ABN 87 145 760 461