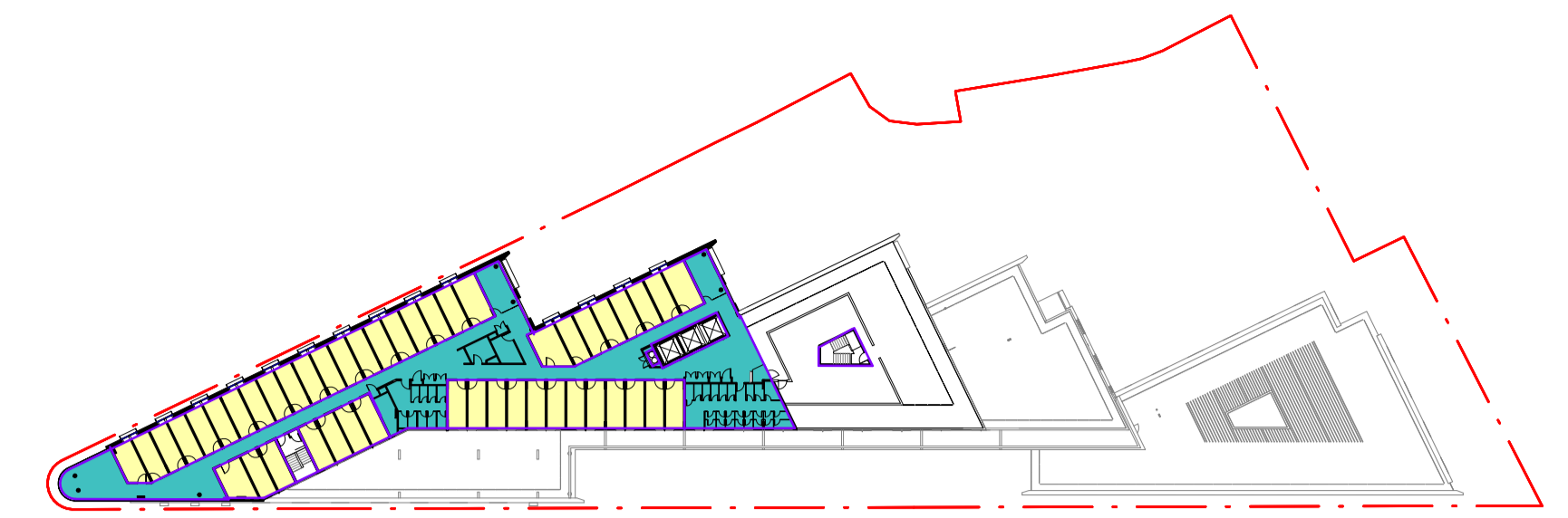


Level 00 (Lowerground)  
1:750



Level 04 - GFA  
1:750



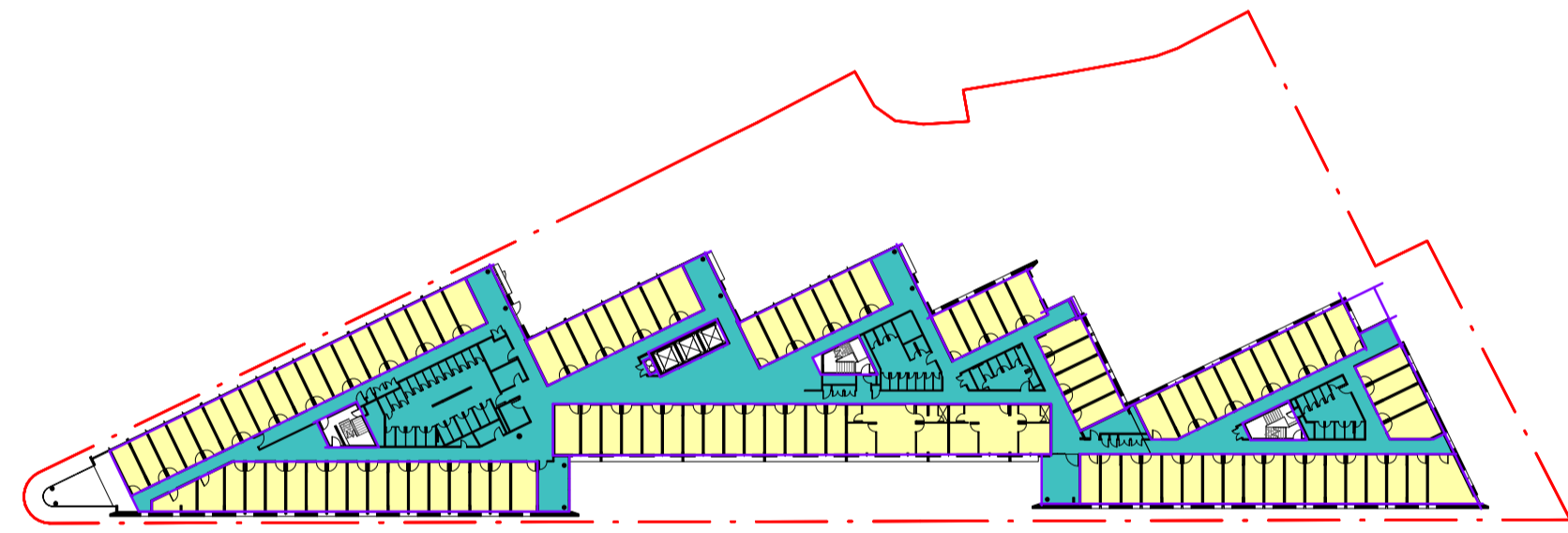
Level 08 - GFA  
1:750



Level 01 - GFA  
1:750



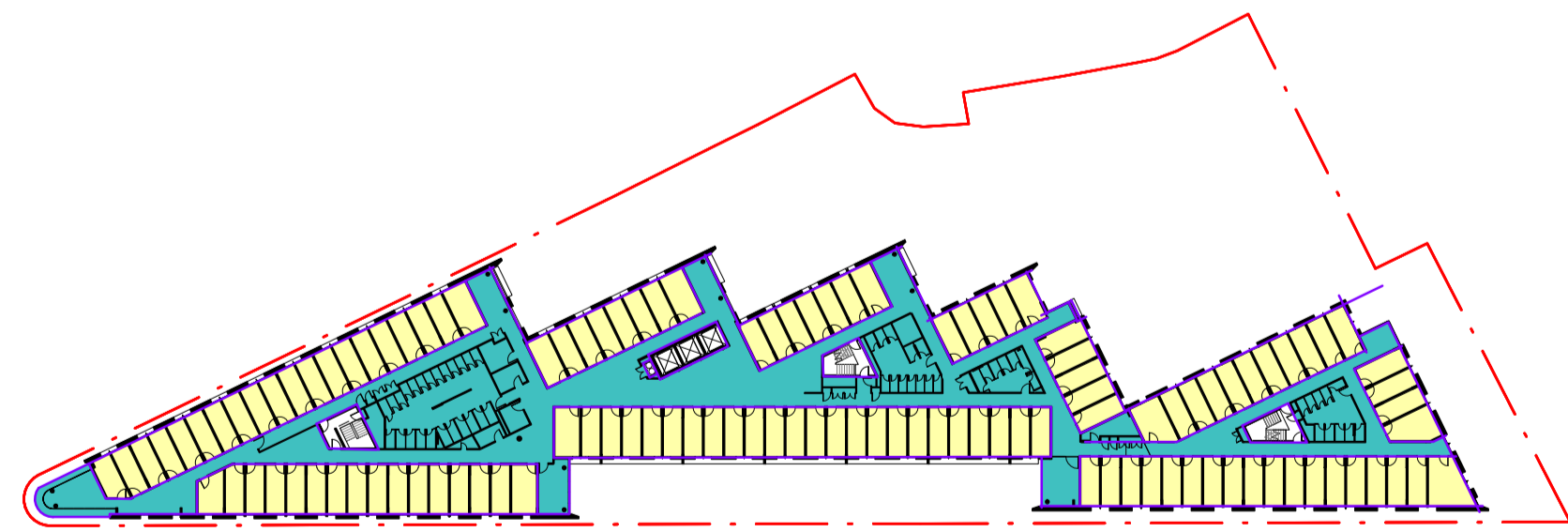
Level 05 - GFA  
1:750



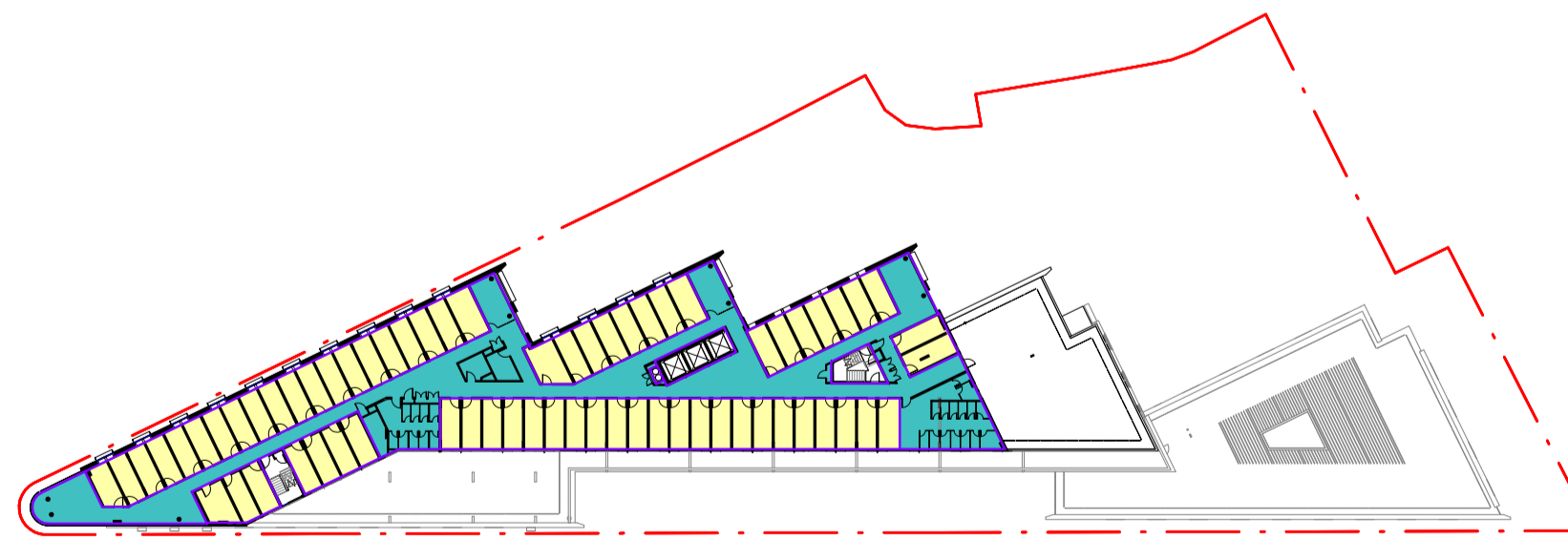
Level 02 - GFA  
1:750



Level 06 - GFA  
1:750



Level 03 - GFA  
1:750



Level 07 - GFA  
1:750

GFA per Level		
Level	Area Use	Area
Lowerground	Communal Internal Space	57 m <sup>2</sup>
		57 m <sup>2</sup>
Level 01	Communal Internal Space	2379 m <sup>2</sup>
		2379 m <sup>2</sup>
Level 02	Accommodation Room	1412 m <sup>2</sup>
	Communal Internal Space	925 m <sup>2</sup>
		2337 m <sup>2</sup>
Level 03	Accommodation Room	1412 m <sup>2</sup>
	Communal Internal Space	973 m <sup>2</sup>
		2385 m <sup>2</sup>
Level 04	Accommodation Room	1412 m <sup>2</sup>
	Communal Internal Space	973 m <sup>2</sup>
		2385 m <sup>2</sup>
Level 05	Accommodation Room	994 m <sup>2</sup>
	Communal Internal Space	817 m <sup>2</sup>
		1811 m <sup>2</sup>
Level 06	Accommodation Room	889 m <sup>2</sup>
	Communal Internal Space	620 m <sup>2</sup>
		1509 m <sup>2</sup>
Level 07	Accommodation Room	780 m <sup>2</sup>
	Communal Internal Space	496 m <sup>2</sup>
		1276 m <sup>2</sup>
Level 08	Accommodation Room	556 m <sup>2</sup>
	Communal Internal Space	397 m <sup>2</sup>
		953 m <sup>2</sup>
Grand Total		15093 m <sup>2</sup>

GFA Summary	
Level	Area
Lowergrnd	57 m <sup>2</sup>
Level 01	2379 m <sup>2</sup>
Level 02	2337 m <sup>2</sup>
Level 03	2385 m <sup>2</sup>
Level 04	2385 m <sup>2</sup>
Level 05	1811 m <sup>2</sup>
Level 06	1509 m <sup>2</sup>
Level 07	1276 m <sup>2</sup>
Level 08	953 m <sup>2</sup>
15093 m <sup>2</sup>	

**GFA DEFINITION**

Gross floor area means the sum of the floor area of each floor of a building measured from the internal face of external walls, or from the internal face of walls separating the building from any other building, measured at a height of 1.4 metres above the floor, and includes:

- (a) the area of a mezzanine, and
- (b) habitable rooms in a basement or an attic, and
- (c) any shop, auditorium, cinema, and the like, in a basement or attic,

But **excludes**:

- (d) any area for common vertical circulation, such as lifts and stairs, and
- (e) any basement;
- (f) storage, and
- (g) vehicular access, loading areas, garbage and services, and
- (h) plant rooms, lift towers and other areas used exclusively for mechanical services or ducting, and
- (i) car parking to meet any requirements of the consent authority (including access to that car parking), and
- (j) any space used for the loading or unloading of goods (including access to it), and
- (k) terraces and balconies with outer walls less than 1.4 metres high, and
- (l) voids above a floor at the level of a storey or storey above.

11/08/2017 11:52:26 AM C:\Users\johndev\Documents\10107\_Design\College and Hotel Used Development\_Visitation\_Report\_A3.dwg

Issue	Description	Date
2	VERSION 3	11-08-2017
1	VERSION 2	05-07-2017

LEGEND

Building Contractor: - Address: -	Developer: - Address: -	Builder: Richard Crookes Constructions Address: 214 Willoughby Road, Naremburn, NSW 2065	Client <b>University of Sydney</b>
Traffic Consultant: - Address: -	Project Manager: - Address: -	ICA Certifier: Bucket Magazine + Goldsmith Address: Suite 2 01, 22-36 Mountaine St, Ultimo, NSW 2007	Architectural Consultant nettleontribe partnership Pty Ltd ABN 58 161 683 122 117 Willoughby Road, Crows Nest, NSW 2065 t +61 2 9431 6131 e sydney@nettleontribe.com.au w nettleontribe.com.au
Account: Acoustic Logic Address: 9 South St, Mascot, NSW 2020	Team Planner: Uba Address: Tower 2, Level 23, Darling Park, 201 Sussex St, Sydney, NSW 2000	Landscape: Ockla Address: Level 1, 5 Wilson St, Newtown, NSW 2042	Project <b>University of Sydney - Regiment Mixed-Use Redevelopment Project</b> City Road, Darlinghurst NSW 2008, Australia
Fire: JHA Services Address: 123 101 Miller St, North Sydney, NSW 2060	Surveyor: Frank M Mason & Co Address: 2 Windsor St, Milsons Point	Structural: SCP Consulting Pty Ltd Address: Level 2, Danchen house, 507 Kent St, Sydney, NSW 2000	Drawn SC
BIM Consultant: - Address: -	Civil: SCP Consulting Pty Ltd Address: Level 2, Danchen house, 507 Kent St, Sydney, NSW 2060	Hydraulic: JHA Services Address: 123 101 Miller St, North Sydney, NSW 2060	Scale 1:200
	Mechanical: JHA Services Address: 123 101 Miller St, North Sydney, NSW 2060	Electrical: JHA Services Address: 123 101 Miller St, North Sydney, NSW 2060	Checked ML
			Sheet Size A1
			Number 10107_DA061
			Issue 2

DA 20170811

