

**Newcastle Office**

Ground Floor, 241 Denison Street, Broadmeadow, NSW Australia 2292
PO Box 428, Hamilton, NSW Australia 2303
T +61 2 4940 4200 F +61 2 4961 6794 E newcastle@rpsgroup.com.au W rpsgroup.com.au

Our Ref: PR 127695: JN
Date: 12 October 2016

Attn: Neil Schembri
Bettergrow Pty Ltd
48 Industry Road
Vineyard NSW 2765

Via: Email

Dear Neil,

RE: Heritage Impact Assessment Report for 24 Davis Road, Wetherill Park NSW.

RPS has been engaged by Bettergrow Pty Ltd to provide an historical heritage impact assessment for proposed construction works at Lot 18, DP 249417, 24 Davis Road Wetherill Park, NSW, herein known as the Project Area. The proposed works involve the construction of a Resources Recovery and Recycling Facility.

The assessment did not identify any historic heritage items within the Project Area.

An explanation of the assessment frameworks which guide this assessment and a review of the relevant historic heritage registers are contained within.

Heritage Significance Assessment Framework*Heritage Act 1977 and the NSW Heritage Branch*

Historical archaeological relics, buildings, structures, archaeological deposits and features are protected under the *Heritage Act 1977* (and subsequent amendments) and may be identified on the State Heritage Register (SHR) or by an active Interim Heritage Order.

The Heritage Council of NSW, constituted under the *Heritage Act 1977*, is appointed by the Minister and is responsible for heritage in NSW. The Council reflects a cross-section of community, government and conservation expertise with the NSW Heritage Branch being the operational arm of the Council. The work of the NSW Heritage Branch includes:

- Working with communities to help them identify their important places and objects;
- Providing guidance on how to look after heritage items;
- Supporting community heritage projects through funding and advice; and
- Maintaining the NSW Heritage Database, an online list of all statutory heritage items in NSW

Environmental Planning and Assessment Act 1979 (EP&A Act)

The EP&A Act regulates a system of environmental planning and assessment for NSW. Land use planning requires that environmental impacts are considered, including the impact on cultural heritage. Assessment documents prepared to meet the requirements of the EP&A Act including Reviews of Environmental Factors, Environmental Impact Statements and Environmental Impact Assessments, should address cultural heritage where relevant. Statutory planning documents such as Local Environment Plans and State Environmental Planning Policies typically contain provisions for heritage.

The Burra Charter: The Australia ICOMOS Charter for Places of Cultural Significance 2013

The *Burra Charter* is a set of best practice principles and procedures for heritage conservation. It was developed by Australia ICOMOS (International Council for Monuments and Sites), the Australian group of the international professional organisation for conservation. Although without statutory weight, the *Burra Charter* underpins heritage management in New South Wales and Australia. The policies and guidelines of the Heritage Council of NSW and the NSW Heritage Office are consistent with and guided by the *Burra Charter*.

NSW Heritage Registers Review

Acknowledged heritage items and places are recorded in statutory and non-statutory registers held at the Federal, State and local level depending on their level of significance.

Federal designations include the National Heritage List (NHL) and the Commonwealth Heritage List (CHL) created by the *Environment Protection and Biodiversity Conservation Act 1999* (EPBC Act). Heritage places of state significance are included on the State Heritage Register (SHR) maintained by the Heritage Branch. Places of local significance are included in heritage schedules in Local Environment Plans (LEPs).

Internationally significant sites of 'outstanding universal value' are inscribed in the World Heritage List (WHL) and in turn, such sites are usually recognised through their inclusion on Federal and state-level registers.

Historic Heritage Assessment of the Project Area

State Heritage

A search of the State Heritage Inventory register on 29 August 2016 identified no items or places within the Project Area. One listed item within the Wetherill Park area, Prospect Reservoir, is located approximately 800 metres north of the Project Area. Davis Road, Wetherill Park is listed as an alternative address for the listing. The Reservoir will not be impacted by the proposed works in the Project Area.

The State Heritage Curtilage which includes Prospect Reservoir abuts the Project Area to the north. The Heritage Curtilage does not encompass the Project Area.

Local Heritage

A search of Schedule 5 of the Fairfield LEP (2013) on 29 August 2016 found no items or places within the Project Area. Two local heritage items were identified in the vicinity of the study area. Item I101 (Bunya Pines) is approximately 1.2 kilometres south of the Project Area and item I102



(Monastery) is approximately 1.5 kilometres south-east of the Project Area. These items will not be impacted by the proposed works within the Project Area.

The Project Area does not fall into the Heritage Curtilage as designated by Fairfield Council LEP **(Figure 3)**.

IMPORTANT NOTE

1. This plan was prepared for the sole purposes of the client for the specific purpose of producing a photographic aerial plan. This plan is strictly limited to the Purpose and does not apply directly or indirectly to any other application, purpose, use or matter. The plan is presented without the assumption of a duty of care to any other person other than the Client ("Third Party") and may not be relied on by Third Party.








2. RPS Australia East Pty Ltd will not be liable (in negligence or otherwise) for any direct or indirect loss, damage, liability or claim arising out of or incidental to:

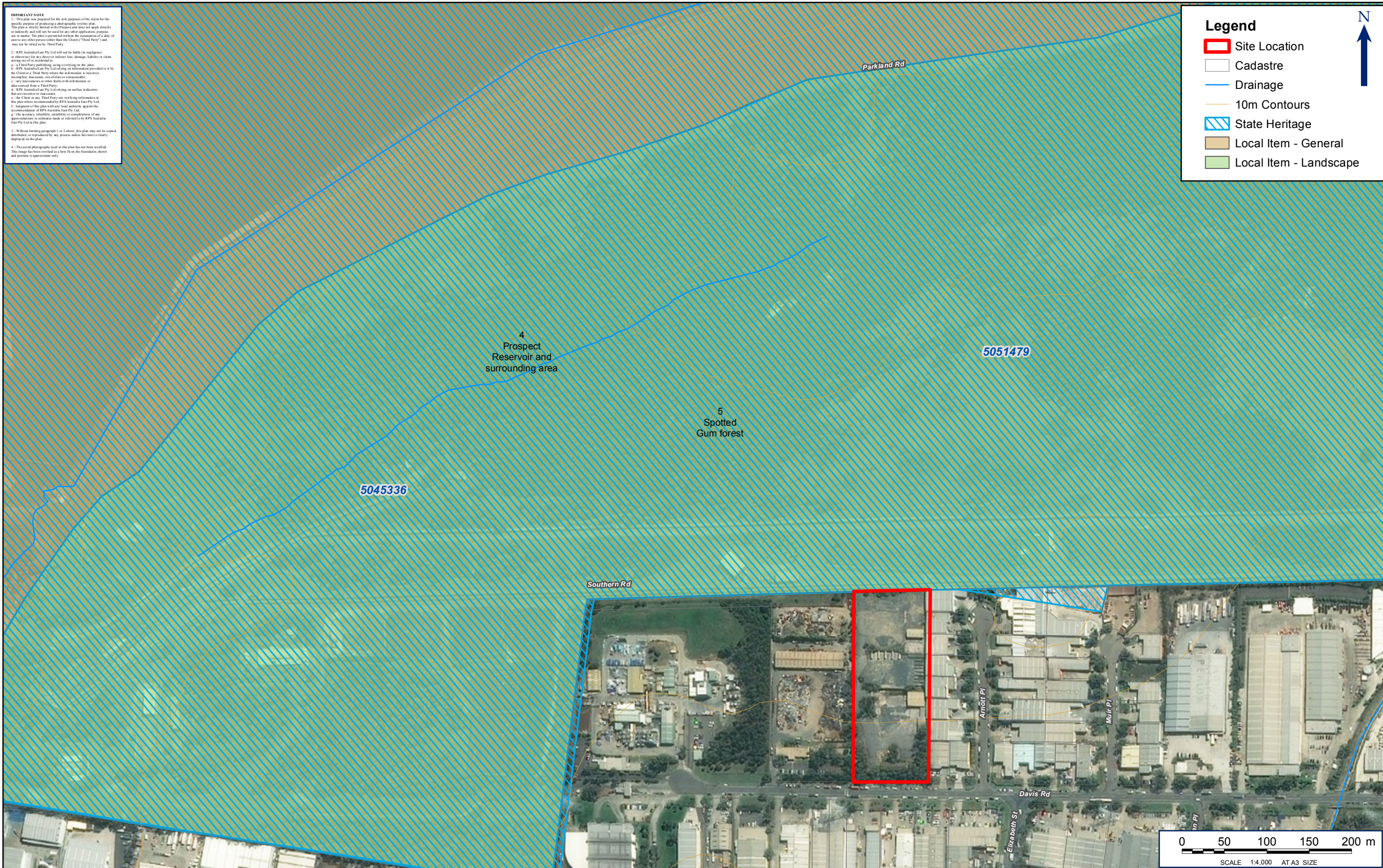
- a. a Third Party publishing, using or relying on the plan;
- b. RPS Australia East Pty Ltd relying on information provided to it by the Client or a Third Party where the information is incorrect, incomplete, inaccurate, out of date or unreliable;
- c. any inaccuracies or other faults with information or data received from a Third Party;
- d. RPS Australia East Pty Ltd relying on surface indicators that are incorrect or inaccurate;
- e. the Client or any Third Party not verifying information in this plan where recommended by RPS Australia East Pty Ltd;
- f. judgment of this plan with any local authority, against the recommendation of RPS Australia East Pty Ltd;
- g. the accuracy, reliability, suitability or completeness of any approximations or estimates made or referred to by RPS Australia East Pty Ltd in this plan.

3. Without limiting paragraph 1 or 2 above, this plan may not be copied, distributed, or reproduced by any person unless the notice clearly displays on the plan.

4. The aerial photography used in this plan has not been rectified. This image has been overlaid on a base file on the boundaries shown and position is approximate only.

Legend

-  Site Location
-  Cadastre
-  Drainage
-  10m Contours
-  State Heritage
-  Local Item - General
-  Local Item - Landscape



TITLE : FIGURE 3: PROJECT AREA WITH HERITAGE CURTILAGE | **LOCATION :** 24 DAVIS RD, WEATHERILL PARK | **DATUM:** GDA 1994 | **DATE :** 11/10/2016 | **VERSION (PLAN BY):** AA3 (amy.obrien)

PROJECTION: GDA 1994 MGA Zone 56 | **PURPOSE:** HERITAGE | **PATH:** J:\JOBS\127\127695 Wetherill Park\10 - Drafting\Arcgis Map Documents\Arch\127695 Figure 3 BA3 20161011.mxd

CLIENT: BETTERGROW PTY LTD | **JOB REF:** PR127695

RPS AUSTRALIA EAST PTY LTD (ABN 44 140 292 762)
 241 DENISON STREET BROADMEADOW PO BOX 428 HAMILTON NSW 2303
 T: 02 4940 4200 F: 02 4961 6794 www.rpsgroup.com.au

creative people making a difference | **RPS**

World Heritage

There are **no** World Heritage items within or adjacent to the Project Area.

Historic Context

The suburb of Wetherill Park was named after the family of John Wetherill, a landowner and business man who gave land in the Wetherill Park area to be designated as parkland around 1870s. This land became Wetherill Park suburb (Cumberland Argus and Fruitgrowers Advocate 1895).

Wetherill Park is immediately adjacent to the southern boundary of Prospect Reservoir.

Prospect Reservoir, Wetherill Park

The Prospect Reservoir was built between 1882 and 1888 (OEH 2016). The State Heritage listing for the Reservoir includes landscape elements, associated water supply structures such as pump stations and residences from the 1920s and 1930s.

The Reservoir is an earth embankment dam 26 metres in height and approximately 2.2 kilometres in length. The curtilage includes the boundary of the grounds owned by Sydney Water Corporation and the components within it; the reservoir itself; side spillway and channel at the southern end of the wall; drainage and monitoring installations at the toe on the downstream face of the wall; the access road along the toe of the downstream face of the wall; and the outlet works which connect the stored water to the Lower Canal - consisting of outlet tower, pipelines, valve house and valve, scour lines and valves, and the other metering, screening and control installations (Water NSW 2016)

Review of Existing Studies and Historical Resources

F. Zambre (2010) Proposing A Cultural Landscape Paradigm A Case study: Prospect Reservoir at Western Sydney

This report was a case study of Prospect Reservoir which placed it within the rapidly developing context of Western Sydney. It determined that the study would utilise a framework of cultural landscapes, their meanings and values to create a broader sense than the traditional interpretation of the term heritage. The report summarised Prospect Reservoir as a place with continual occupation by both Aboriginal and modern Australian culture, evidenced in its Local and State listings as a heritage site for the past five decades. It stated that Prospect Reservoir was situated in a multilayered landscape, dominated by historic, religious and technological and economical values, and was a good example of landscape displaying generational modifications.

The report states the location of the Reservoir as being the the rapidly developing geographic and demographic centre of Western Sydney. It concluded that this rapid development was a major threat to the landscape of the Reservoir and proposed a need to understand and assess this in order to properly manage the pressure of urbanisation and new usages of the surrounding land.

D. Steele (2012) Aboriginal and Non-Aboriginal Archaeological and Cultural Heritage Assessment for Horsley Drive Business Park

Dominic Steel Archaeology was commissioned by the Western Sydney Parklands Trust to assess a State Significant Development site on The Horsley Drive and Cowpasture Road, Horsley Park, NSW. The objective was to identify potential Aboriginal and non-Aboriginal archaeological and cultural heritage constraints and to guide future developments in context of historic and cultural heritage.

No State or Local heritage register sites were located within the project area. Existing built structures on the site, including farm houses, dams and previous landscape plantings, related to the period following the subdivision of the Horsley Estate in 1925. The project area was assessed as having minimal archaeological potential, low Local heritage significance and nil State heritage significance.

Impact Assessment and Recommendations

There are no Local or State listed heritage items within the Project Area. There are no World Heritage listed items in or adjacent to the Project Area.

On the basis of the Project Area's extensive modifications and disturbances as identified during a pedestrian survey undertaken 26 May 2016 by RPS and the search of the Historical and Heritage registers which identified no items, the Project Area has low archaeological potential.

It is therefore assessed that the proposed works to construct a Recycling and Resource Centre are unlikely to have an adverse impact upon non-Aboriginal historic archaeological values. No significant archaeological constraints are apparent that would restrict the proposed works.

We trust this information is sufficient for your purposes. Should you require any further details or clarification, please do not hesitate to contact RPS.

Yours sincerely

RPS



Jo Nelson
RPS Cultural Heritage consultant

References

1895. "The Cumberland Argus and Fruitgrowers Advocate." Parramatta.

Dominic Steele Consulting Archaeology. 2012. "Aboriginal and Non-Aboriginal Archaeological and Cultural Heritage Assessment for Horsley Drive Business Park." Western Sydney Parklands Trust.

Fallavi Zambre. 2010. "Proposing A Cultural Landscape Paradigm A Case study: Prospect Reservoir at Western Sydney ": University of New South.

OEH. 2016. "Prospect Reservoir and surrounding area." Sydney.

<http://www.environment.nsw.gov.au/heritageapp/ViewHeritageItemDetails.aspx?ID=5045336>

Water NSW. 2016. "Prospect Reservoir." Sydney.

<http://www.watarnsw.com.au/supply/Greater-Sydney/dams/prospect-dam>