

S1 S2 S5 S7 S9 S11 S12 S13 S14 S15 S16 S17 S18 S19 S20 S21 S22 S23 S24

RL 93.500
TOP OF ROOF 5TH FACADE

FFL 88.360
ROOF PLANT

FFL 83.860
HOTEL L23

FFL 80.660
HOTEL L22

FFL 77.460
HOTEL L21

FFL 74.260
HOTEL L20

FFL 71.060
HOTEL L19

FFL 67.860
HOTEL AND SERVICED APARTMENTS L18

FFL 64.660
HOTEL AND SERVICED APARTMENTS L17

FFL 61.460
HOTEL AND SERVICED APARTMENTS L16

FFL 58.130
HOTEL AND SERVICED APARTMENTS L15

FFL 54.930
HOTEL AND SERVICED APARTMENTS L14

FFL 51.730
HOTEL AND SERVICED APARTMENTS L13

FFL 48.530
HOTEL AND SERVICED APARTMENTS L12

FFL 45.330
HOTEL AND SERVICED APARTMENTS L11

FFL 42.130
HOTEL AND SERVICED APARTMENTS L10

FFL 38.930
HOTEL AND SERVICED APARTMENTS L09

FFL 35.600
HOTEL AND SERVICED APARTMENTS L08

FFL 32.400
HOTEL AND SERVICED APARTMENTS L07

FFL 29.200
HOTEL AND SERVICED APARTMENTS L06

FFL 25.150
HOTEL L05

FFL 21.150
PODIUM L04

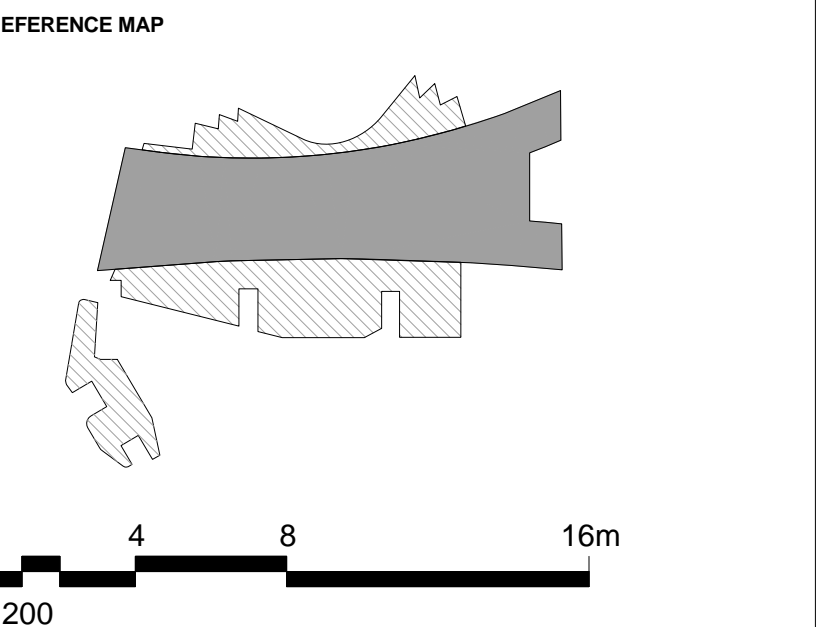
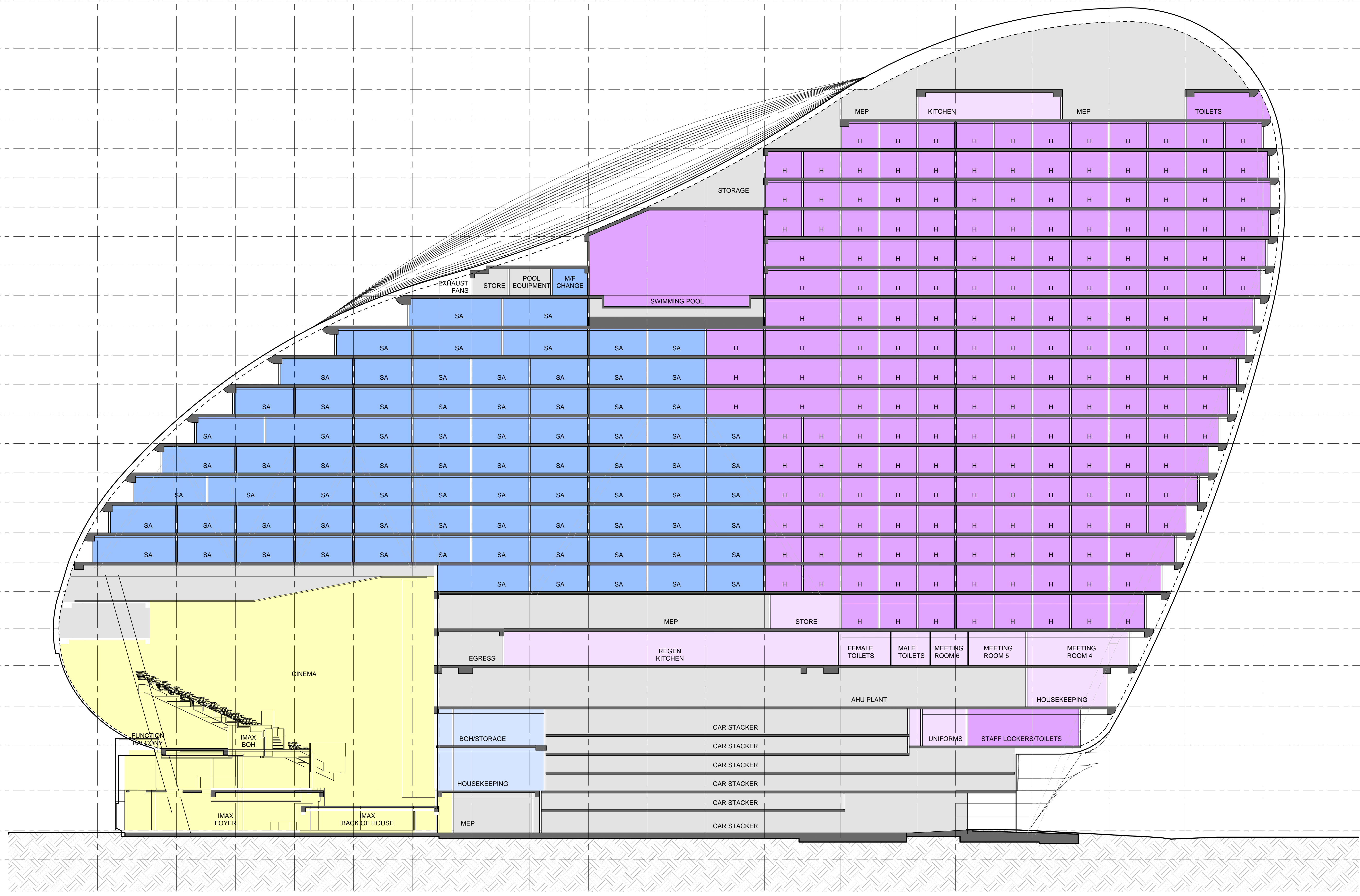
FFL 16.650
PODIUM L03

FFL 12.400
PODIUM L02

FFL 7.500
PODIUM L01

FFL 3.200
GF

FFL 0.000
DATUM



NOTES

- DO NOT SCALE DRAWINGS. WRITTEN DIMENSIONS GOVERN.
- ALL DIMENSIONS ARE IN MILLIMETRES UNLESS NOTED OTHERWISE.
- ALL DIMENSIONS SHALL BE VERIFIED ON SITE BEFORE PROCEEDING WITH THE WORK. HASSELL SHALL BE NOTIFIED IN WRITING OF ANY DISCREPANCIES.
- THIS DRAWING MUST BE READ IN CONJUNCTION WITH ALL RELEVANT CONTRACTS, SPECIFICATIONS AND DRAWINGS.

© COPYRIGHT OF THIS DRAWING IS VESTED IN HASSELL LTD.
2017 HASSELL LTD.

THIS DRAWING IS AN UNCONTROLLED COPY, UNLESS NOTED OTHERWISE.

REV	DESCRIPTION	DATE
M	AMENDED INTERIOR FITOUT DA MODIFICATION 6 (TOWER)	26.03.18
L	DA MODIFICATION 6 (TOWER)	23.10.17
K1	DELETE HATCH AMENDED REVISION DESCRIPTION DA MODIFICATION 5 (ROOM MIX)	23.10.17
K	DA MODIFICATION 4 (ROOM MIX)	15.05.17
J1	DELETE HATCH DA MODIFICATION 3 (PODIUM)	19.10.17
J	DA MODIFICATION 3 (PODIUM)	21.04.17
H	AMENDED DEVELOPMENT APPLICATION	12.04.17
G	AMENDED DEVELOPMENT APPLICATION	14.02.17
F	AMENDED DEVELOPMENT APPLICATION	14.12.16
E	AMENDED DEVELOPMENT APPLICATION	22.03.16
D	AMENDED DEVELOPMENT APPLICATION	15.12.15
C	AMENDED DEVELOPMENT APPLICATION	23.10.15
B	DEVELOPMENT APPLICATION	20.08.13
A	FINAL DRAFT	23.07.13
-	ISSUED FOR INFORMATION	19.07.13

ARCHITECT
HASSELL Limited ABN 007 711 435
LEVEL 2, PIER 6/9,
23 HICKSON ROAD
SYDNEY NSW 2000 AUSTRALIA
SYDNEY@HASSELLSTUDIO.COM
T +61 2 9101 2000 F +61 2 9101 2100

HASSELL

pmdl

Grocon

PROJECT
THE RIBBON HOTEL,
SERVICED APARTMENTS AND RETAIL
31 WHEAT ROAD, SYDNEY

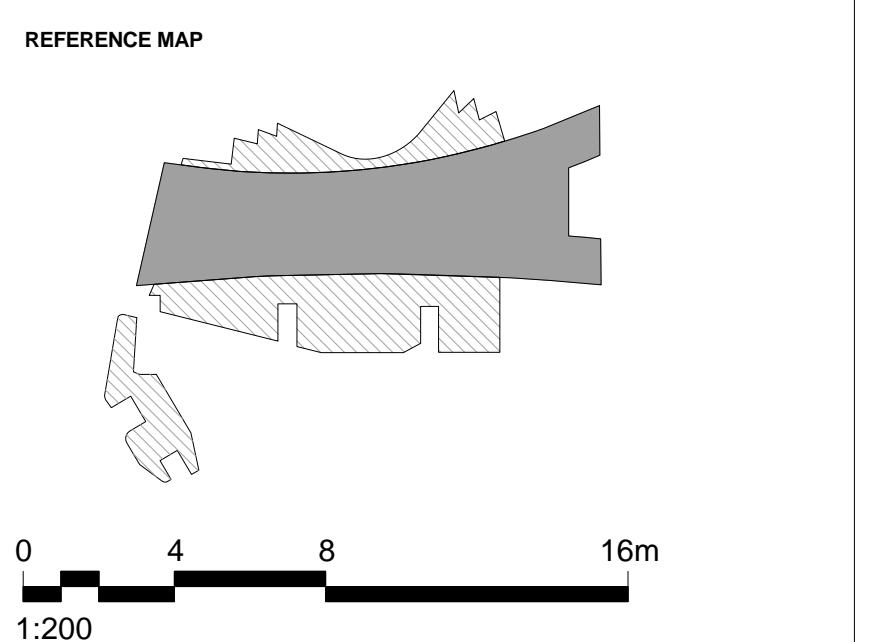
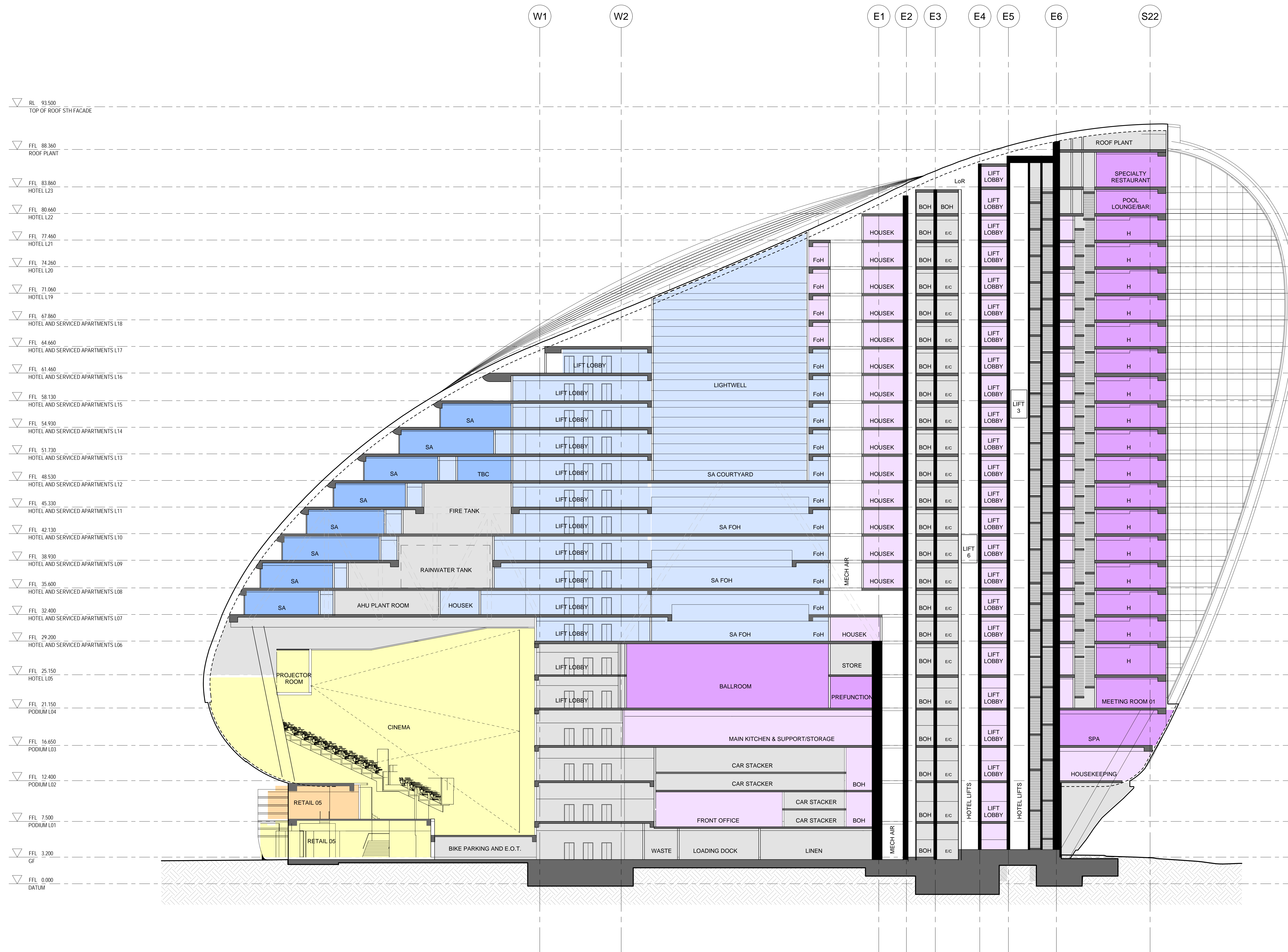
DRAWING TITLE
GA SECTIONS - SHEET 3

STATUS
FOR APPROVAL

SCALE @ B1	DRAWN	CO-ORD	REVIEWED	APPROVED
1:200	RT	MH	MH	EL
PROJECT NUMBER	DRAWING NUMBER	REV		
A004409	ARC-HSL-DD-1202	M		

D SECTION
1:200

\\pmp01\01\004409\Working\Revise\RT, DA, Drawings\4409_TheRibbon_Hotel-DA_S98_3_NGV-MOD-5_180328_0940.dwg



- NOTES**
- DO NOT SCALE DRAWINGS. WRITTEN DIMENSIONS GOVERN.
 - ALL DIMENSIONS ARE IN MILLIMETRES UNLESS NOTED OTHERWISE.
 - ALL DIMENSIONS SHALL BE VERIFIED ON SITE BEFORE PROCEEDING WITH THE WORK. HASSELL SHALL BE NOTIFIED IN WRITING OF ANY DISCREPANCIES.
 - THIS DRAWING MUST BE READ IN CONJUNCTION WITH ALL RELEVANT CONTRACTS, SPECIFICATIONS AND DRAWINGS.

© COPYRIGHT OF THIS DRAWING IS VESTED IN HASSELL, LTD.
2017 HASSELL, LTD.

THIS DRAWING IS AN UNCONTROLLED COPY, UNLESS NOTED OTHERWISE.

REV	DESCRIPTION	DATE
M	AMENDED INTERIOR FITOUT DA MODIFICATION 6 (TOWER)	26.03.18
L	DA MODIFICATION 6 (TOWER)	23.10.17
K1	DELETE HATCH AMENDED REVISION DESCRIPTION DA MODIFICATION 5 (ROOM MIX)	23.10.17
K	DA MODIFICATION 4 (ROOM MIX)	15.05.17
J1	DELETE HATCH DA MODIFICATION 3 (PODIUM)	19.10.17
J	DA MODIFICATION 3 (PODIUM)	21.04.17
H	AMENDED DEVELOPMENT APPLICATION	12.04.17
G	AMENDED DEVELOPMENT APPLICATION	14.02.17
F	AMENDED DEVELOPMENT APPLICATION	14.12.16
E	AMENDED DEVELOPMENT APPLICATION	22.03.16
D	AMENDED DEVELOPMENT APPLICATION	15.12.15
C	AMENDED DEVELOPMENT APPLICATION	23.10.15
B	DEVELOPMENT APPLICATION	20.08.13
A	FINAL DRAFT	23.07.13
-	ISSUED FOR INFORMATION	19.07.13

ARCHITECT
HASSELL Limited ABN 007 711 435
LEVEL 2, PIER 6/9,
23 HICKSON ROAD
SYDNEY NSW 2000 AUSTRALIA
SYDNEY@HASSELLSTUDIO.COM
T +61 2 9101 2000 F +61 2 9101 2100

HASSELL



PROJECT
THE RIBBON HOTEL,
SERVICED APARTMENTS AND RETAIL
31 WHEAT ROAD, SYDNEY

DRAWING TITLE
GA SECTIONS - SHEET 4

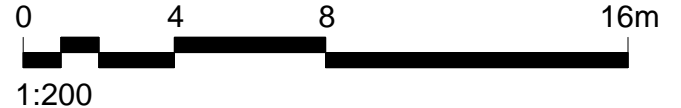
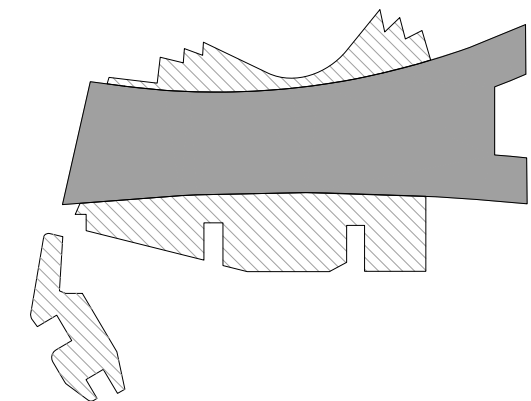
STATUS
FOR APPROVAL

SCALE @ B1	DRAWN	CO-ORD	REVIEWED	APPROVED
1:200	RT	MH	MH	EL
PROJECT NUMBER	DRAWING NUMBER		REV	
A004409	ARC-HSL-DD-1203		M	

E SECTION
1:200

\\pmp01\01\004409\working\Rev\RT_DD_DrawingSet\08_Arc-HSL-DD-1203_TheRibbon_Hotel-DA_S98_3_NGV-MOD-5_180328_0940.dwg

REFERENCE MAP



- NOTES**
- DO NOT SCALE DRAWINGS. WRITTEN DIMENSIONS GOVERN.
 - ALL DIMENSIONS ARE IN MILLIMETRES UNLESS NOTED OTHERWISE.
 - ALL DIMENSIONS SHALL BE VERIFIED ON SITE BEFORE PROCEEDING WITH THE WORK. HASSELL SHALL BE NOTIFIED IN WRITING OF ANY DISCREPANCIES.
 - THIS DRAWING MUST BE READ IN CONJUNCTION WITH ALL RELEVANT CONTRACTS, SPECIFICATIONS AND DRAWINGS.

© COPYRIGHT OF THIS DRAWING IS VESTED IN HASSELL LTD. 2017 HASSELL LTD.

THIS DRAWING IS AN UNCONTROLLED COPY, UNLESS NOTED OTHERWISE.

REV	DESCRIPTION	DATE
M	AMENDED INTERIOR FITOUT DA MODIFICATION 6 (TOWER)	26.03.18
L	DA MODIFICATION 6 (TOWER)	23.10.17
K1	DELETE HATCH AMENDED REVISION DESCRIPTION DA MODIFICATION 5 (ROOM MIX)	23.10.17
K	DA MODIFICATION 4 (ROOM MIX)	15.05.17
J1	DELETE HATCH DA MODIFICATION 3 (PODIUM)	19.10.17
J	DA MODIFICATION 3 (PODIUM)	21.04.17
H	AMENDED DEVELOPMENT APPLICATION	12.04.17
G	AMENDED DEVELOPMENT APPLICATION	14.02.17
F	AMENDED DEVELOPMENT APPLICATION	14.12.16
E	AMENDED DEVELOPMENT APPLICATION	22.03.16
D	AMENDED DEVELOPMENT APPLICATION	15.12.15
C	AMENDED DEVELOPMENT APPLICATION	23.10.15
B	DEVELOPMENT APPLICATION	20.08.13
A	FINAL DRAFT	23.07.13
-	ISSUED FOR INFORMATION	19.07.13

ARCHITECT
 HASSELL Limited ABN 007 711 435
 LEVEL 2, PIER 6/9,
 23 HICKSON ROAD
 SYDNEY NSW 2000 AUSTRALIA
 SYDNEY@HASSELLSTUDIO.COM
 T +61 2 9101 2000 F +61 2 9101 2100

HASSELL

pmdl

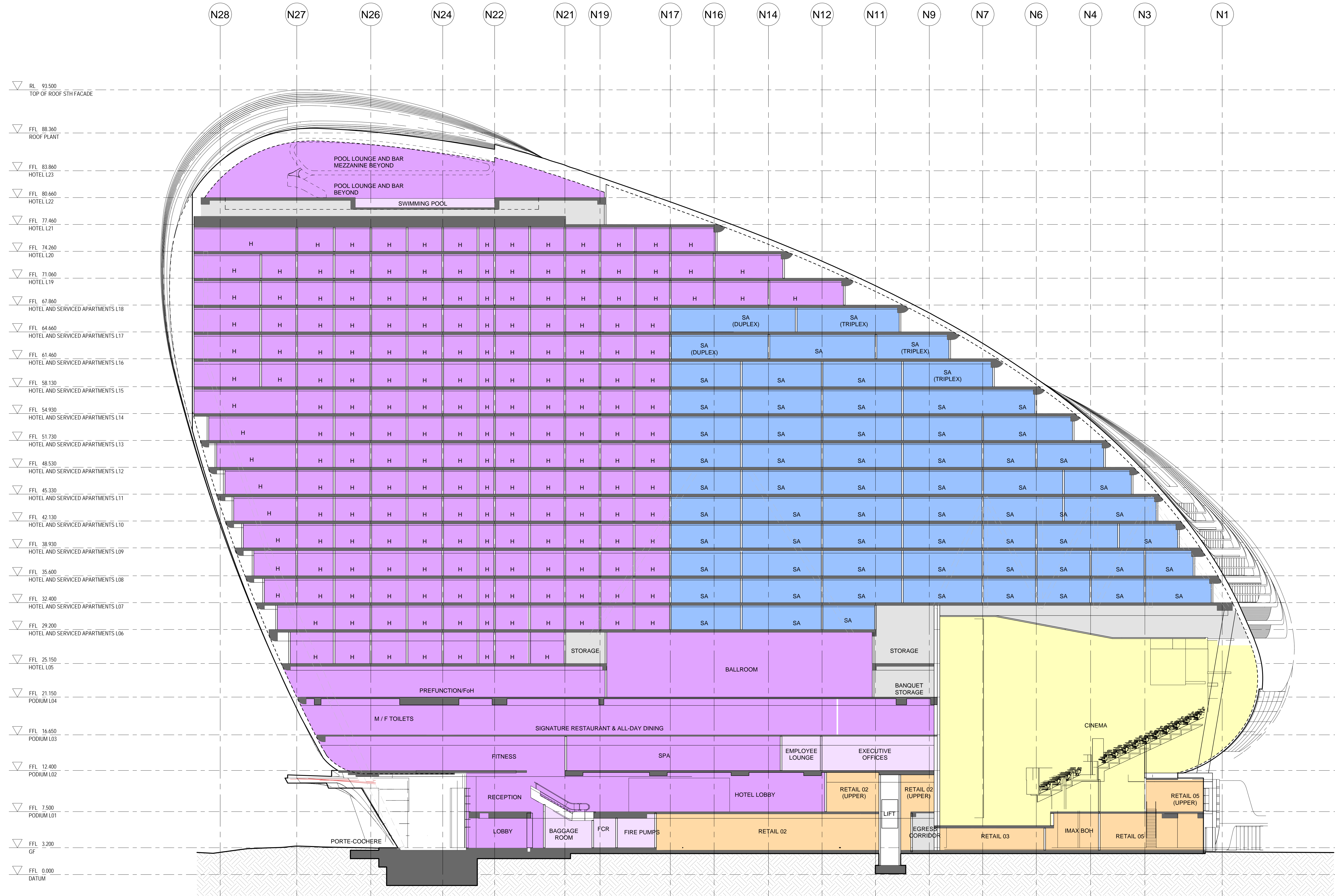
Grocon

PROJECT
 THE RIBBON HOTEL,
 SERVICED APARTMENTS AND RETAIL
 31 WHEAT ROAD, SYDNEY

DRAWING TITLE
 GA SECTIONS - SHEET 5

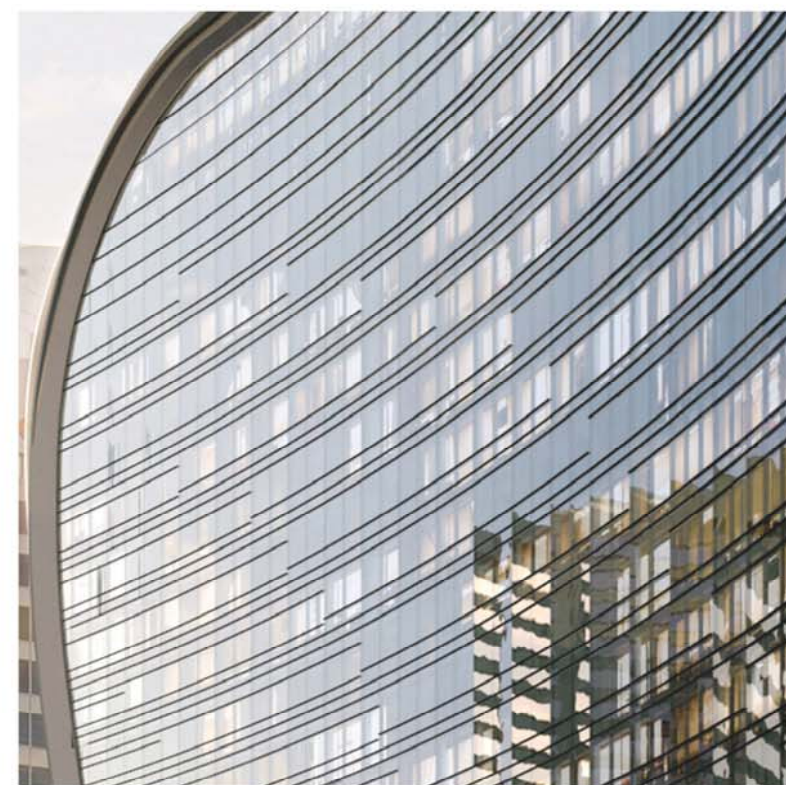
STATUS
 FOR APPROVAL

SCALE @ B1	DRAWN	CO-ORD	REVIEWED	APPROVED
1:200	RT	MH	MH	EL
PROJECT NUMBER	DRAWING NUMBER	REV		
A004409	ARC-HSL-DD-1204	M		

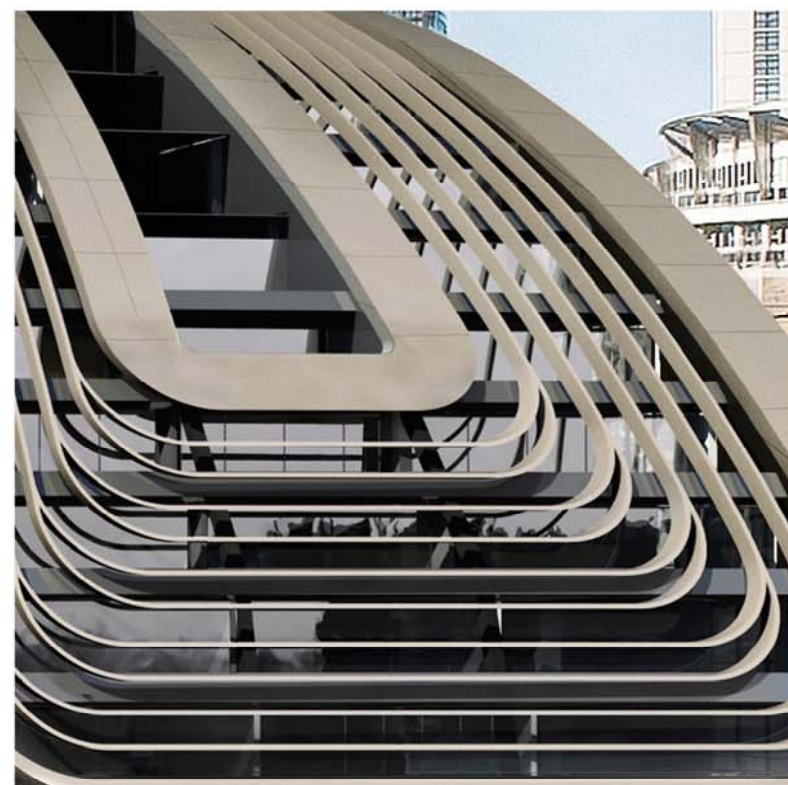


F SECTION
 1:200

\\pmp01\01004409\working\Rev\RT_DD_DrawingSet\09_Hotel-DA_S98_L_Non-MOD-5_180328_0940.dwg



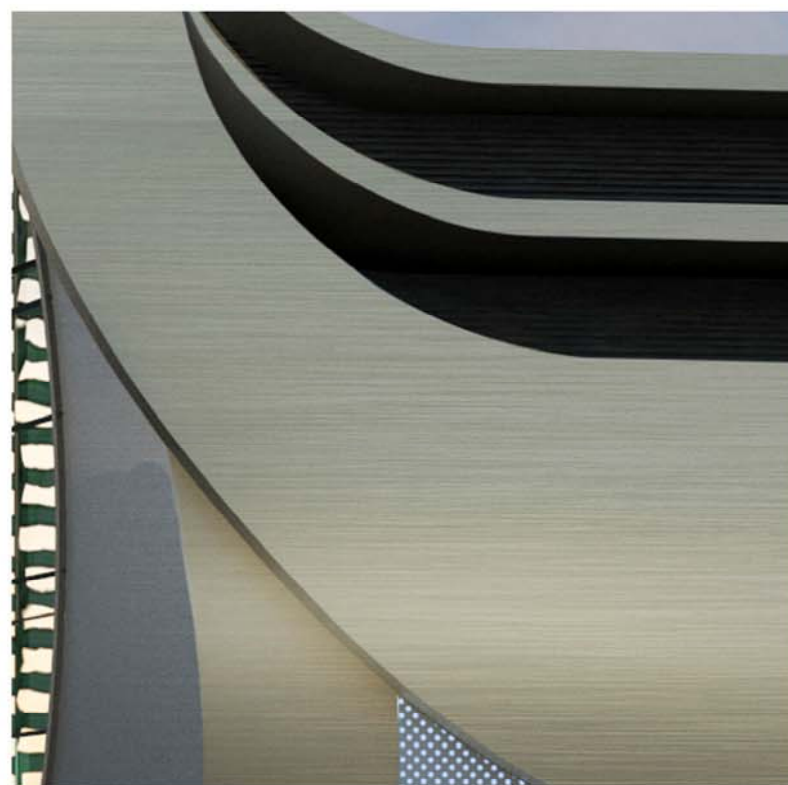
FT-1
Glazed curtain wall system with aluminium framing
LOCATION: North and South elevations above Podium



FT-2
Glazed window wall system with aluminium framing and curved aluminium spandrel cladding
LOCATION: East and West elevations above Podium



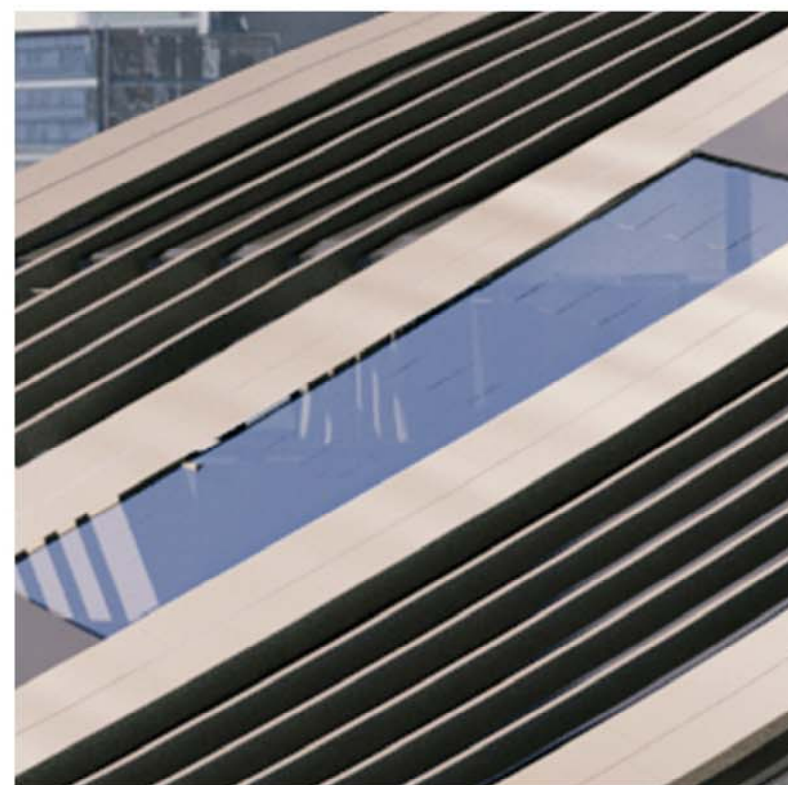
FT-3
Glazed curtain wall system with aluminium framing
LOCATION: Recessed area of East Elevation



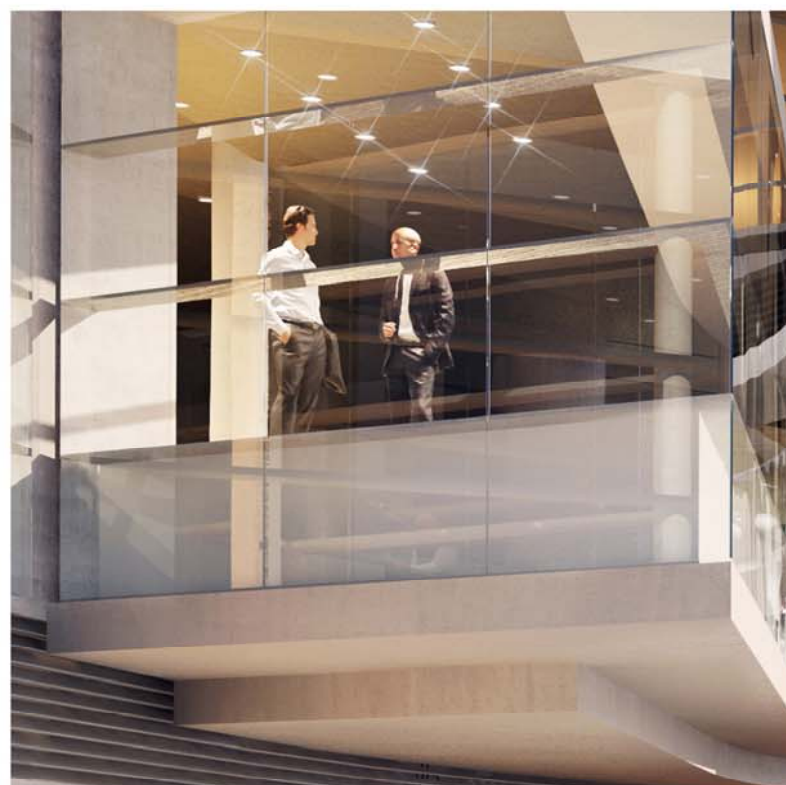
FT-4
Curved and faceted aluminium cladding
LOCATION: Margin to roof; East and West elevation



FT-5
Curved and faceted sun-shading profiles in aluminium
LOCATION: East and West elevation



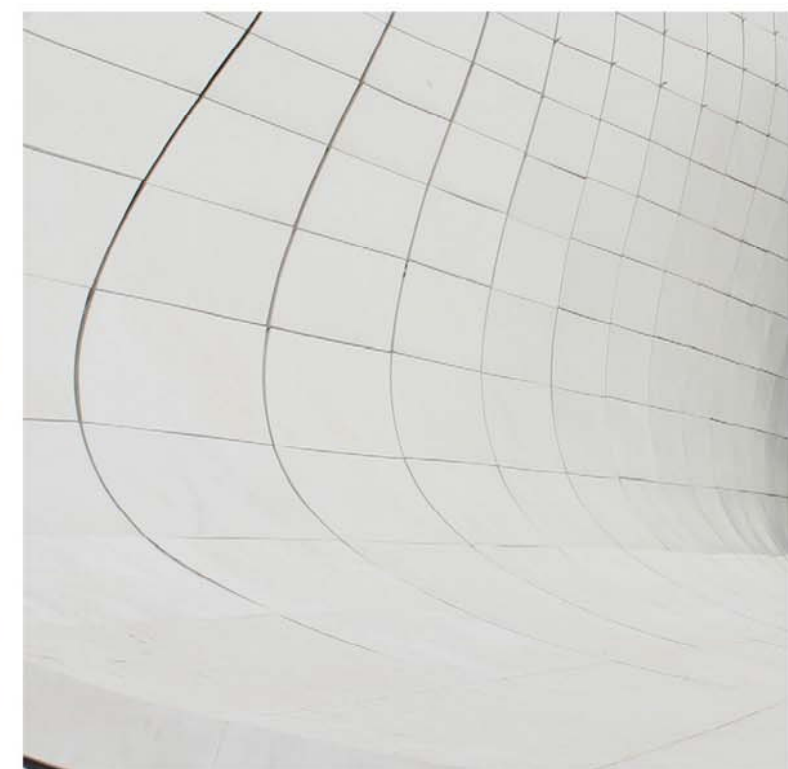
FT-6
Skylight in clear glass
LOCATION: West Elevation



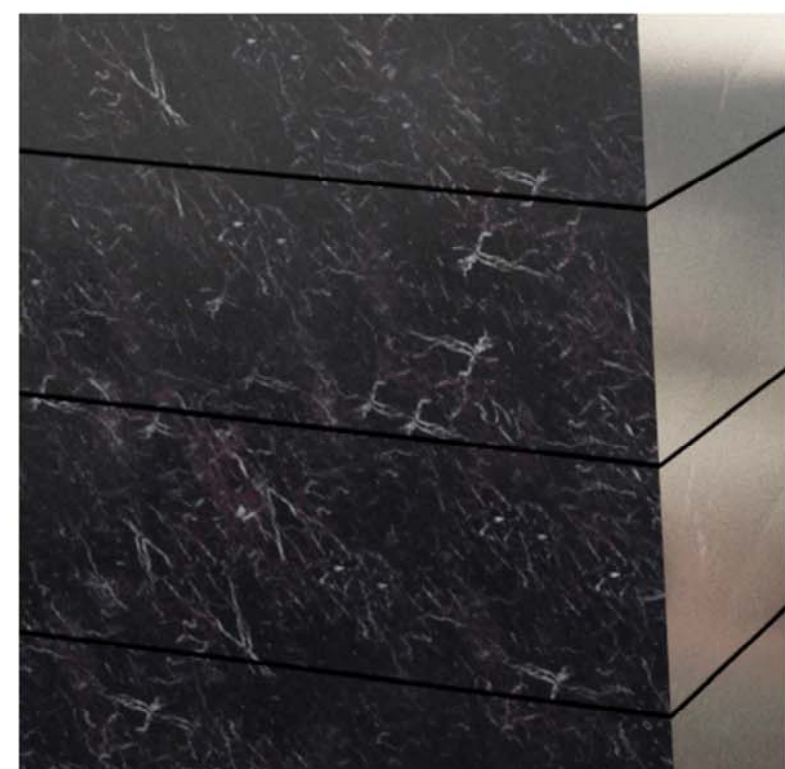
FT-7A
Frameless glass with GRC wall cladding surrounds, parapets and horizontal louvers
LOCATION: Level 1 Podium - North, East and West Elevations



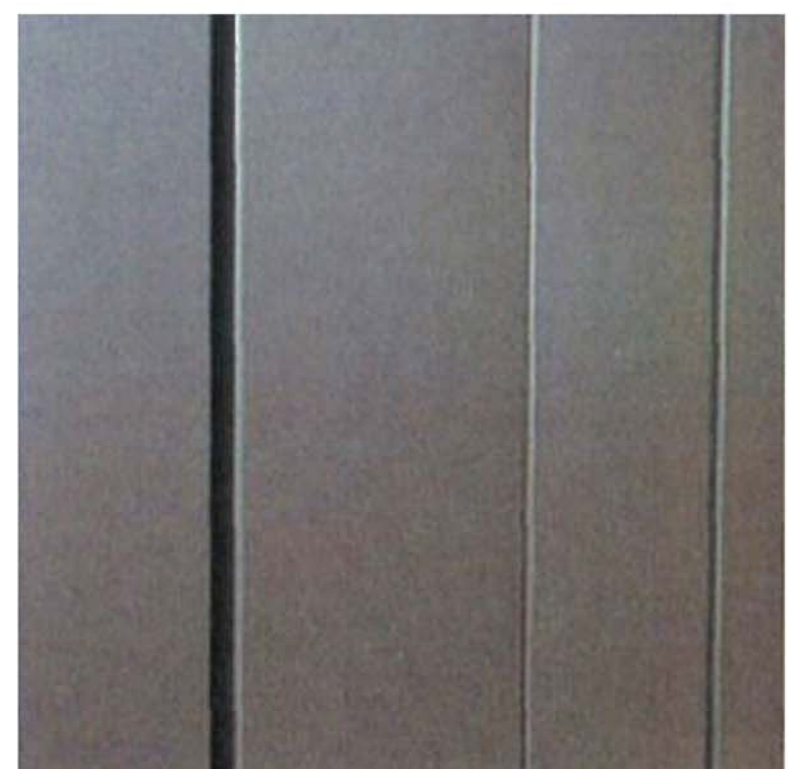
FT-7B
Frameless glass with levelless bi-fold doors
LOCATION: Ground Level Podium - North, East and West Elevations



FT-7C
GRC Cladding with horizontal expressed joints
LOCATION: Podium - East, West and North Elevations



FT-8
Cladding in natural stone or aluminium
LOCATION: Podium - East Elevation

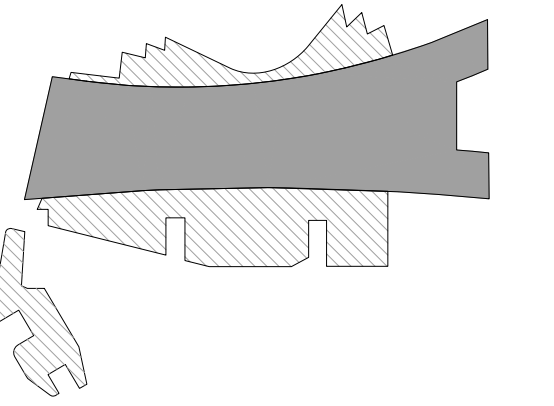


FT-9
Cladding in Aluminium panel
LOCATION: Podium - South Elevation



FT-13
Frameless, 2-stage louvers in extruded aluminium
LOCATION: South and West Elevations above Podium

REFERENCE MAP



NOTES

- DO NOT SCALE DRAWINGS. WRITTEN DIMENSIONS GOVERN.
- ALL DIMENSIONS ARE IN MILLIMETRES UNLESS NOTED OTHERWISE.
- ALL DIMENSIONS SHALL BE VERIFIED ON SITE BEFORE PROCEEDING WITH THE WORK. HASSELL SHALL BE NOTIFIED IN WRITING OF ANY DISCREPANCIES.
- THIS DRAWING MUST BE READ IN CONJUNCTION WITH ALL RELEVANT CONTRACTS, SPECIFICATIONS AND DRAWINGS.

© COPYRIGHT OF THIS DRAWING IS VESTED IN HASSELL LTD.
2017 HASSELL LTD.

THIS DRAWING IS AN UNCONTROLLED COPY, UNLESS NOTED OTHERWISE.

REV	DESCRIPTION	DATE
F	DA MODIFICATION 6 (TOWER)	23.10.17
E	AMENDED DEVELOPMENT APPLICATION	24.02.17
D	AMENDED DEVELOPMENT APPLICATION	21.03.16
C	AMENDED DEVELOPMENT APPLICATION	23.10.15
B	DEVELOPMENT APPLICATION	20.08.13
A	FINAL DRAFT	23.07.13
-	ISSUED FOR INFORMATION	19.07.13

ARCHITECT

HASSELL Limited ABN 007 711 435
LEVEL 2, PIER 6/8,
23 HICKSON ROAD
SYDNEY NSW 2000 AUSTRALIA
SYDNEY@HASSELLSTUDIO.COM
T +61 2 9101 2000 F +61 2 9101 2100

HASSELL



CLIENT



PROJECT

THE RIBBON HOTEL,
SERVICED APARTMENTS AND RETAIL
31 WHEAT ROAD, SYDNEY

DRAWING TITLE

MATERIALS AND FINISHES PALLETTE

STATUS

FOR APPROVAL

SCALE @ B1	DRAWN	CO-ORD	REVIEWED	APPROVED
SP	MH	MH	EL	

PROJECT NUMBER	DRAWING NUMBER	REV
A004409	ARC-HSL-DD-1930	F

Code	Architectural Program	Typical Location	Max. Visible Light Reflectivity*				Details	Notes
			North	South	West	East		
FT-1	Hotel, Serviced Apartments	North and South elevations above podium	8%	8%	-	-	Glazed curtain wall system with aluminium framing	
FT-2	Hotel, Serviced Apartments	East and West elevations above podium	-	-	8%	8%	Glazed window-wall system with aluminium framing and curved aluminium spandrel cladding	
FT-3	Hotel	Recessed area of East Elevation	-	-	-	8%	Glazed curtain wall system with aluminium framing	
FT-4	Hotel, Serviced Apartments	Margin to roof; East and West elevation	8%	8%	8%	8%	Curved and faceted aluminium cladding	
FT-5	Hotel, Service Areas	East and West elevations	-	-	8%	8%	Curved and faceted sub-shading profiles in aluminium cladding with finish to match FT-4	
FT-6	Light Well	West elevation	-	-	8%	-	Skylight in clear glass	
FT-7A	Hotel, Retail	Level 1 Podium: North, East and West elevations	8%	-	8%	8%	Frameless glass with GRC wall cladding surrounds, parapets and horizontal louvres where indicated	
FT-7B	Hotel Lobby, Retail	Ground Level Podium: North, East and West elevations	8%	-	8%	8%	Frameless glass with frameless bi-fold doors where indicated	
FT-7C	Hotel, Retail, IMAX	Podium: East, West, North	8%	-	8%	8%	GRC cladding with horizontal expressed joints	
FT-8	Hotel Lobby	Ground Level Podium: East Elevation	-	-	-	8%	Cladding in natural stone or aluminium	
FT-9	Parking	South elevation	-	8%	-	-	Cladding in Aluminium panel	
FT-13	Imax Service Areas, Back of House	South and West elevations above podium	-	8%	8%	-	Frameless, 2-stage louvres in extruded aluminium	

* Applies to all glazing and specular cladding materials. Information sourced from "Table 2 - Recommended Surface Reflectivity" - Cundall reflectivity study dated 16/12/2015

HOTEL ROOM UNIT DATA

NOTE:
AREAS TO CENTRELINE OF DEMISE WALLS,
INCLUDES FACADE ZONE, EXCLUDES DUCT AREAS

LEVEL 5				
Room No.	Aspect	Typology	Area	Accessible
501	N	ES	79.5	
502	N	K	40.8	
503	N	K(UA)	41.5	✓
504	N	K	42.2	
505	N	QQ	43.0	
506	N	K	43.7	
507	N	K	44.5	
508	N	QQ	45.3	
509	S	QQ	47.6	
510	S	K	46.9	
511	S	K(UA)	46.2	✓
512	S	K	45.4	
513	S	K	44.5	
514	S	QQ	43.6	
515	S	K	42.5	
516	S	K	54.5	
517	E	K	44.3	
518	E	K	41.9	
519	E	K	50.2	

LEVEL 6				
Room No.	Aspect	Typology	Area	Accessible
601	N	ES	99.4	
602	N	K	40.8	
603	N	K(UA)	41.5	✓
604	N	K	42.2	
605	N	QQ	43.0	
606	N	K	43.7	
607	N	K	44.5	
608	N	QQ	45.3	
609	N	K	46.1	
610	N	K	46.8	
611	N	K	47.6	
612	S	K	48.5	
613	S	K	48.1	
614	S	QQ	47.6	
615	S	K	46.9	
616	S	K(UA)	46.2	✓
617	S	K	45.4	
618	S	K	44.5	
619	S	QQ	43.6	
620	S	K	42.5	
621	S	ES(UA)	76.7	✓
622	E	K	40.8	
623	E	K	42.8	
624	E	K	46.1	

LEVEL 7				
Room No.	Aspect	Typology	Area	Accessible
701	N	JS	65.0	
702	N	K	38.3	
703	N	K	38.3	
704	N	K(UA)	38.3	✓
705	N	K	38.3	
706	N	QQ	38.3	
707	N	K	38.3	
708	N	K	38.3	
709	N	QQ	38.3	
710	N	K	38.3	
711	N	K	38.3	
712	N	K	38.3	
713	S	K	38.9	
714	S	K	38.9	
715	S	QQ	38.9	
716	S	K	38.9	
717	S	K(UA)	38.9	✓
718	S	K	38.9	
719	S	K	38.9	
720	S	QQ	38.9	
721	S	K	38.9	
722	S	ES	85.3	
723	E	K	40.8	
724	E	K	42.8	
725	E	K	46.1	

LEVEL 8				
Room No.	Aspect	Typology	Area	Accessible
801	N	ES	81.2	
802	N	K	38.3	
803	N	K	38.3	
804	N	K(UA)	38.3	✓
805	N	K	38.3	
806	N	QQ	38.3	
807	N	K	38.3	
808	N	K	38.3	
809	N	QQ	38.3	
810	N	K	38.3	
811	N	K	38.3	
812	N	K	38.3	
813	S	K	38.9	
814	S	K	38.9	
815	S	QQ	38.9	
816	S	K	38.9	
817	S	K(UA)	38.9	✓
818	S	K	38.9	
819	S	K	38.9	
820	S	QQ	38.9	
821	S	K	38.9	
822	S	K	38.9	
823	S	K	56.2	
824	E	K	40.8	
825	E	K	42.8	
826	E	K	46.1	

LEVEL 9				
Room No.	Aspect	Typology	Area	Accessible
901	N	K	48.2	
902	N	K	38.3	
903	N	K	38.3	
904	N	K	38.3	
905	N	K(UA)	38.3	✓
906	N	K	38.3	
907	N	QQ	38.3	
908	N	K	38.3	
909	N	K	38.3	
910	N	QQ	38.3	
911	N	K	38.3	
912	N	K	38.3	
913	N	K	38.3	
914	S	K	38.9	
915	S	K	38.9	
916	S	QQ	38.9	
917	S	K	38.9	
918	S	K(UA)	38.9	✓
919	S	K	38.9	
920	S	K	38.9	
921	S	QQ	38.9	
922	S	K	38.9	
923	S	K	38.9	
924	S	JS	71.5	
925	E	K	40.8	
926	E	K	42.8	
927	E	K	46.1	

LEVEL 10				
Room No.	Aspect	Typology	Area	Accessible
1001	N	JS	68.3	
1002	N	K	38.3	
1003	N	K	38.3	
1004	N	K	38.3	
1005	N	K(UA)	38.3	✓
1006	N	K	38.3	
1007	N	QQ	38.3	
1008	N	K	38.3	
1009	N	K	38.3	
1010	N	QQ	38.3	
1011	N	K	38.3	
1012	N	K	38.3	
1013	N	K	38.3	
1014	S	K	38.9	
1015	S	K	38.9	
1016	S	QQ	38.9	
1017	S	K	38.9	
1018	S	K(UA)	38.9	✓
1019	S	K	38.9	
1020	S	K	38.9	
1021	S	QQ	38.9	
1022	S	K	38.9	
1023	S	K	38.9	
1024	S	ES	85.4	
1025	E	K	40.8	
1026	E	K	42.8	
1027	E	K	46.1	

LEVEL 11				
Room No.	Aspect	Typology	Area	Accessible
1101	N	ES	75.6	
1102	N	K	38.3	
1103	N	K	38.3	
1104	N	K	38.3	
1105	N	K(UA)	38.3	✓
1106	N	K	38.3	
1107	N	QQ	38.3	
1108	N	K	38.3	
1109	N	K	38.3	
1110	N	QQ	38.3	
1111	N	K	38.3	
1112	N	K	38.3	
1113	N	K	38.3	
1114	S	K	38.9	
1115	S	K	38.9	
1116	S	QQ	38.9	
1117	S	K	38.9	
1118	S	K(UA)	38.9	✓
1119	S	K	38.9	
1120	S	K	38.9	
1121	S	QQ	38.9	
1122	S	K	38.9	
1123	S	K	38.9	
1124	S	K	38.9	
1125	S	K	48.3	
1126	E	K	40.8	
1127	E	K	42.8	
1128	E	K	46.1	

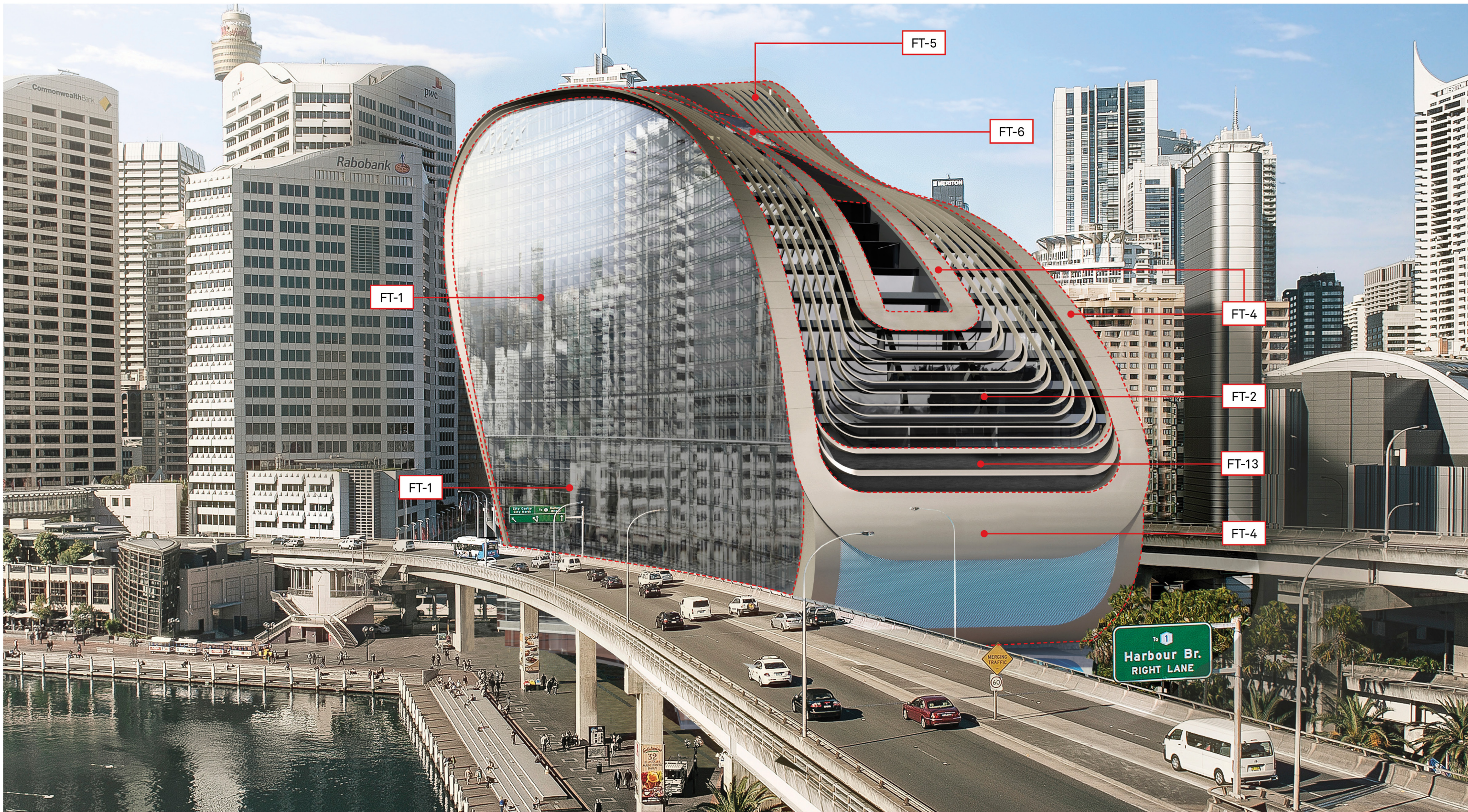
LEVEL 12				
Room No.	Aspect	Typology	Area	Accessible
1201	N	ES	82.2	
1202	N	K	38.3	
1203	N	K	38.3	
1204	N	K	38.3	
1205	N	K	38.3	
1206	N	K	38.3	
1207	N	QQ	38.3	
1208	N	K	38.3	
1209	N	K	38.3	
1210	N	QQ	38.3	
1211	N	K	38.3	
1212	N	K	38.3	
1213	N	K	38.3	
1214	S	ES	59.4	
1215	S	ES	77.8	
1216	S	K	38.9	
1217	S	K	38.9	
1218	S	K(UA)	38.9	✓
1219	S	K	38.9	
1220	S	K	38.9	
1221	S	QQ	38.9	
1222	S	K	38.9	
1223	S	K	38.9	
1224	S	K	38.9	
1225	S	K	60.8	
1226	E	K	40.8	
1227	E	K	42.8	
1228	E	K	46.1	

LEVEL 13				
Room No.	Aspect	Typology	Area	Accessible
1301	N	K	51.9	
1302	N	K	38.3	
1303	N	K	38.3	
1304	N	K	38.3	
1305	N	K	38.3	
1306	N	K	38.3	
1307	N	K	38.3	
1308	N	QQ	38.3	
1309	N	K	38.3	
1310	N	K	38.3	
1311	N	QQ	38.3	
1312	N	K	38.3	
1313	N	K	38.3	
1314	N	K	38.3	
1315	S	ES	59.4	
1316	S	ES	77.8	
1317	S	K	38.9	
1318	S	K	38.9	
1319	S	QQ	38.9	
1320	S	K	38.9	
1321	S	K	38.9	
1322	S	QQ	38.9	
1323	S	K	38.9	
1324	S	K	38.9	
1325	S	K	38.9	
1326	S	JS	72.7	
1327	E	K	40.8	
1328	E	K	42.8	
1329	E	K	46.1	

LEVEL 14				
Room No.	Aspect	Typology	Area	Accessible
1401	N	JS	63.3	
1402	N	K	38.3	
1403	N	K	38.3	
1404	N	K	38.3	
1405	N	K	38.3	
1406	N	K	38.3	
1407	N	K	38.3	
1408	N	QQ	38.3	
1409	N	K	38.3	
1410	N	K	38.3	
1411	N	QQ	38.3	
1412	N	K	38.3	
1413	N	K	38.3	
1414	N	K	38.3	
1415	S	ES	59.4	
1416	S	ES	77.8	
1417	S	QQ	38.9	
1418	S	K	38.9	
1419	S	QQ	38.9	
1420	S	K	38.9	
1421	S	K	38.9	
1422	S	QQ	38.9	
1423	S	K	38.9	
1424	S	K	38.9	
1425	S	K	38.9	
1426	S	ES	83.8	
1427	E	K	40.8	
1428	E	K	42.8	
1429	E	K	46.1	

LEVEL 15				
Room No.	Aspect	Typology	Area	Accessible
1501	N	DS	122.5	
1502	N	K	38.3	
1503	N	K	38.3	
1504	N	K	38.3	
1505	N	K	38.3	
1506	N	K	38.3	
1507	N	QQ	38.3	
1508	N	K	38.3	
1509	N	K	38.3	
1510	N	QQ	38.3	
1511	N	K	38.3	
1512	N	K	38.3	
1513	N	K	38.3	
1514	S	ES	77.8	
1515	S	K	38.9	
1516	S	K	38.9	
1517	S	QQ	38.9	
1518	S	K	38.9	
1519	S	K	38.9	
1520	S	QQ	38.9	
1521	S	K	38.9	
1522	S	K	38.9	
1523	S	K	38.9	
1524	S	ES	94.3	
1525	E	K	40.8	
1526	E	K	42.8	
1527	E	K	46.1	

LEVEL 16				
Room No.	Aspect	Typology	Area	Accessible
1601	N	DS	131.3	
1602	N	K	38.3	
1603	N	K	38.3	
1604	N	K	38.3	
160				



DRAWING NO.: SK027.1 Rev A
 (DA MODIFICATION 6 TOWER)
DATE: 23 OCTOBER 2017
DRAWING TITLE: MATERIALS AND FINISHES
 VIEW FROM NORTH - WEST

**MATERIALS AND FINISHES
 VIEW FROM NORTH WEST**

Scale:
 NTS

Client:
 Grocon

Project Name:
 The Ribbon Hotel, Serviced
 Apartments and Retail

HASSELL

pmdl
 ARCHITECTURE
 INTERIORS
 MASTERPLANNING

ASPECT Studios™

Grocon