

Level 2, Pier 8/9, 23 Hickson Road Sydney NSW Australia 2000  
 GPO Box 5487 Sydney NSW 2001  
 T +61 2 9101 2000 W hassellstudio.com  
 Architecture Interior Design Landscape Architecture Planning Urban Design  
 Australia China Hong Kong Singapore United Kingdom

HASSELL Limited  
 ABN 24 007 711 435

Nominated architects NSW: Tony Grist 5350 Ross De La Motte 7398

# THE RIBBON HOTEL, SERVICED APARTMENTS AND RETAIL

Signage Matrix

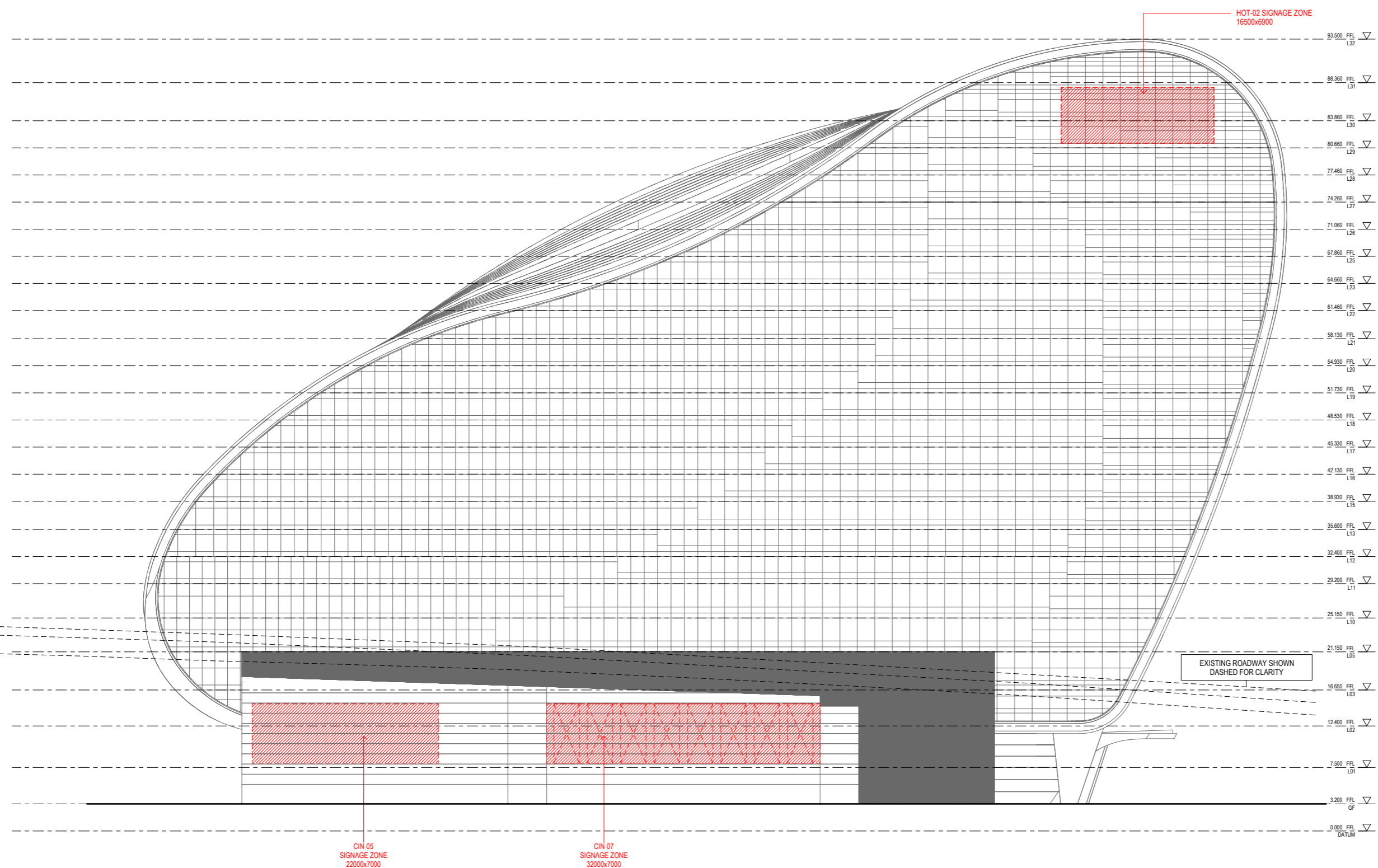
12 October 2017

Revision G

Issued for Information

Code	Programme	Type	Location (aspect)	Location	Signage Zone Size (mm)	Purpose
CIN-01	Cinema	Backlit, Logo	West	Road	10750 x 2000	Primary cinema signage
CIN-02	Cinema	Backlit, Logo	West	Pedestrian	6300 x 1200	Secondary cinema signage
CIN-03	Cinema	LED, animated	West	Pedestrian	20000 x 900	"Now showing" animated advertisement
CIN-05	Cinema	Back and face lit, poster	South	Road	22000 x 7000	"Now showing" poster advertisement
CIN-07	Cinema	Back and face lit, poster	South	Pedestrian	32000 x 7000	"Now showing" poster advertisement
CIN-08	Cinema	Backlit, Logo	North	Road	2000 x 10750	Secondary cinema signage
CIN-09	Cinema	Backlit, Logo	West	Road	2000 x 2000	Secondary cinema signage
CIN-10	Cinema	Blacklit, Logo	West	Pedestrian	1200 x 1200	Secondary cinema signage
GEN-01	General	LED, Video screen	West	Pedestrian	15000 x 4200	Public video screen
HOT-01	Hotel	Backlit, Logo	North	Sky	16500 x 6400	Primary hotel sky signage
HOT-02	Hotel	Backlit, Logo	South	Sky	16500 x 6900	Primary hotel sky signage
HOT-03	Hotel	Backlit, Logo	East	Pedestrian	9000 x 9000	Primary hotel entry signage
RET-01	Retail Tenancy	Backlit, Logo	North	Pedestrianw	900 High, Length of Shopfront	Retail shopfront signage
RET-02	Retail Tenancy	Backlit, Logo	North	Pedestrian	900 High, Length of Shopfront	Retail shopfront signage
RET-03	Retail Tenancy	Backlit, Logo	North	Pedestrian	900 High, Length of Shopfront	Retail shopfront signage
RET-04	Retail Tenancy	Backlit, Logo	North	Pedestrian	900 High, Length of Shopfront	Retail shopfront signage
RET-05	Retail Tenancy	Backlit, Logo	North	Pedestrian	900 High, Length of Shopfront	Retail shopfront signage
RET-06	Retail Tenancy	Backlit, Logo	West	Pedestrian	900 High, Length of Shopfront	Retail shopfront signage
RET-07	Retail Tenancy	Backlit, Logo	West	Pedestrian	900 High, Length of Shopfront	Retail shopfront signage
RET-08	Retail Tenancy	Backlit, Logo	West	Pedestrian	900 High, Length of Shopfront	Retail shopfront signage
RET-09	Retail Tenancy	Backlit, Logo	West	Pedestrian	900 High, Length of Shopfront	Retail shopfront signage

**HASSELL**

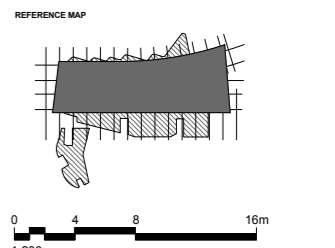


**SIGNAGE TYPES AND LOCATIONS  
SOUTH ELEVATION**

DRAWING NO: SK026.1 REV B  
 DATE: 18 SEPTEMBER 2017  
 BASED ON: ARC-HSL-DD-1150 Rev H

DRAWING TITLE: SIGNAGE TYPES & LOCATIONS  
 SOUTH ELEVATION

**SHFA Signage not included**



**NOTES**

- DO NOT SCALE DRAWINGS. WRITTEN DIMENSIONS GOVERN.
- ALL DIMENSIONS ARE IN MILLIMETRES UNLESS NOTED OTHERWISE.
- ALL DIMENSIONS SHALL BE VERIFIED ON SITE BEFORE PROCEEDING WITH THE WORK. HASSELL SHALL BE NOTIFIED IN WRITING OF ANY DISCREPANCIES.
- THIS DRAWING MUST BE READ IN CONJUNCTION WITH ALL RELEVANT CONTRACTS, SPECIFICATIONS AND DRAWINGS.

© COPYRIGHT OF THIS DRAWING IS VESTED IN HASSELL, LTD.  
 2016 HASSELL, LTD.

THIS DRAWING IS AN UNCONTROLLED COPY, UNLESS NOTED OTHERWISE.

**FOR INFORMATION ONLY**

REV	DESCRIPTION	DATE
1	AMENDED DEVELOPMENT APPLICATION	14.02.17
2	AMENDED DEVELOPMENT APPLICATION	14.12.17
3	AMENDED DEVELOPMENT APPLICATION	15.12.17
4	AMENDED DEVELOPMENT APPLICATION	15.12.17
5	AMENDED DEVELOPMENT APPLICATION	15.10.17
6	DEVELOPMENT APPLICATION	20.08.17
7	FINAL DRAFT	22.09.17
8	ISSUED FOR PRECONSTRUCTION	19.07.17

**ARCHITECT**

HASSELL Limited ABN 007 711 435  
 LEVEL 2, PIER 89,  
 23 HICKSON ROAD  
 SYDNEY NSW 2000 AUSTRALIA  
 SYDNEY@HASSELLSTUDIO.COM  
 T +61 2 9101 2000 F +61 2 9101 2100

**HASSELL**



PROJECT

**THE RIBBON HOTEL,  
 SERVICED APARTMENTS AND RETAIL**

31 WHEAT ROAD, SYDNEY

DRAWING TITLE

GA ELEVATIONS - SHEET 1

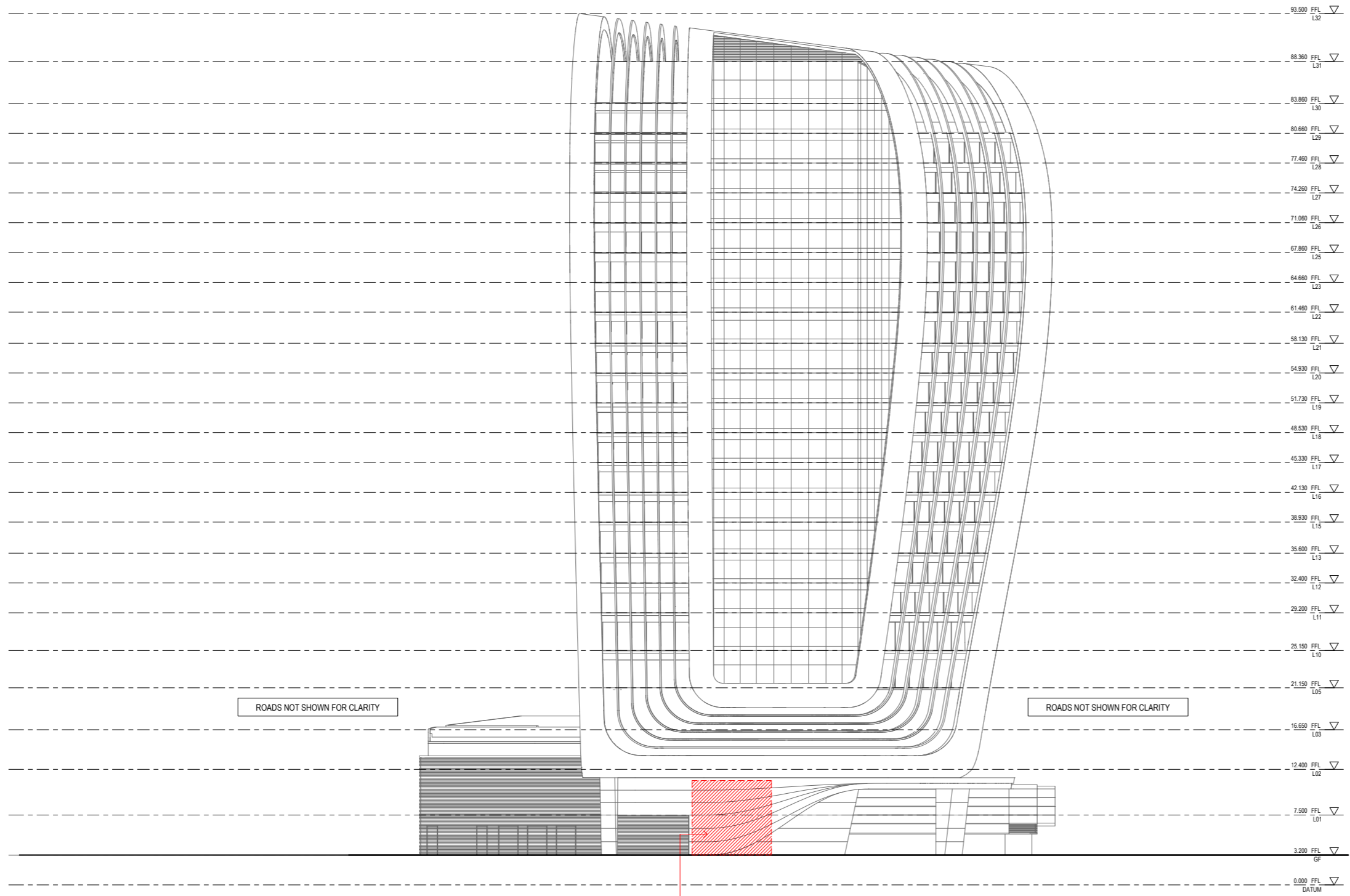
**FOR APPROVAL**

**FOR INFORMATION ONLY**

SCALE	DRAWN	DESIGNED	REVIEWED	APPROVED
1:200	SP	MH	MH	JEL

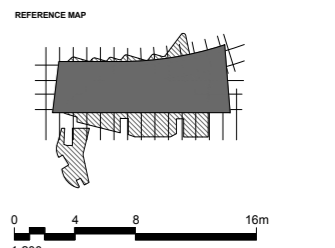
PROJECT NUMBER	DRAWING NUMBER	REV
A004409	ARC-HSL-DD-1150	IG

\projects\6011004409\Workshop\Drawings\06\Signage\11\021\_Sign\_South\_Elev\_1.rvt (1:200) 18/09/2017 10:51:18 AM



**SIGNAGE TYPES AND LOCATIONS  
EAST ELEVATION**

DRAWING NO: SK026.2 REV B  
 DATE: 18 SEPTEMBER 2017  
 BASED ON: ARC-HSL-DD-1151 Rev G  
 DRAWING TITLE: SIGNAGE TYPES & LOCATIONS  
 EAST ELEVATION  
**SHFA Signage not included**



- NOTES**
- DO NOT SCALE DRAWINGS. WRITTEN DIMENSIONS GOVERN.
  - ALL DIMENSIONS ARE IN MILLIMETRES UNLESS NOTED OTHERWISE.
  - ALL DIMENSIONS SHALL BE VERIFIED ON SITE BEFORE PROCEEDING WITH THE WORK. HASSELL SHALL BE NOTIFIED IN WRITING OF ANY DISCREPANCIES.
  - THIS DRAWING MUST BE READ IN CONJUNCTION WITH ALL RELEVANT CONTRACTS, SPECIFICATIONS AND DRAWINGS.

© COPYRIGHT OF THIS DRAWING IS VESTED IN HASSELL. LTD.  
 2016 HASSELL. LTD.

THIS DRAWING IS AN UNCONTROLLED COPY. UNLESS NOTED OTHERWISE.

**FOR INFORMATION ONLY**

REV	DESCRIPTION	DATE
1	AMENDED DEVELOPMENT APPLICATION	14.02.17
2	AMENDED DEVELOPMENT APPLICATION	15.12.17
3	AMENDED DEVELOPMENT APPLICATION	23.10.17
4	DEVELOPMENT APPLICATION	20.06.17
5	FINAL DRAFT	22.09.17
6	ISSUED FOR INFORMATION	19.07.17
7	DESIGNATION	12.07.17

**ARCHITECT**  
 HASSELL Limited ABN 007 711 435  
 LEVEL 2, PIER 89,  
 23 HICKSON ROAD  
 SYDNEY NSW 2000 AUSTRALIA  
 SYDNEY@HASSELLSTUDIO.COM  
 T +61 2 9101 2000 F +61 2 9101 2100

**HASSELL**



PROJECT  
**THE RIBBON HOTEL,  
 SERVICED APARTMENTS AND RETAIL**  
 31 WHEAT ROAD, SYDNEY

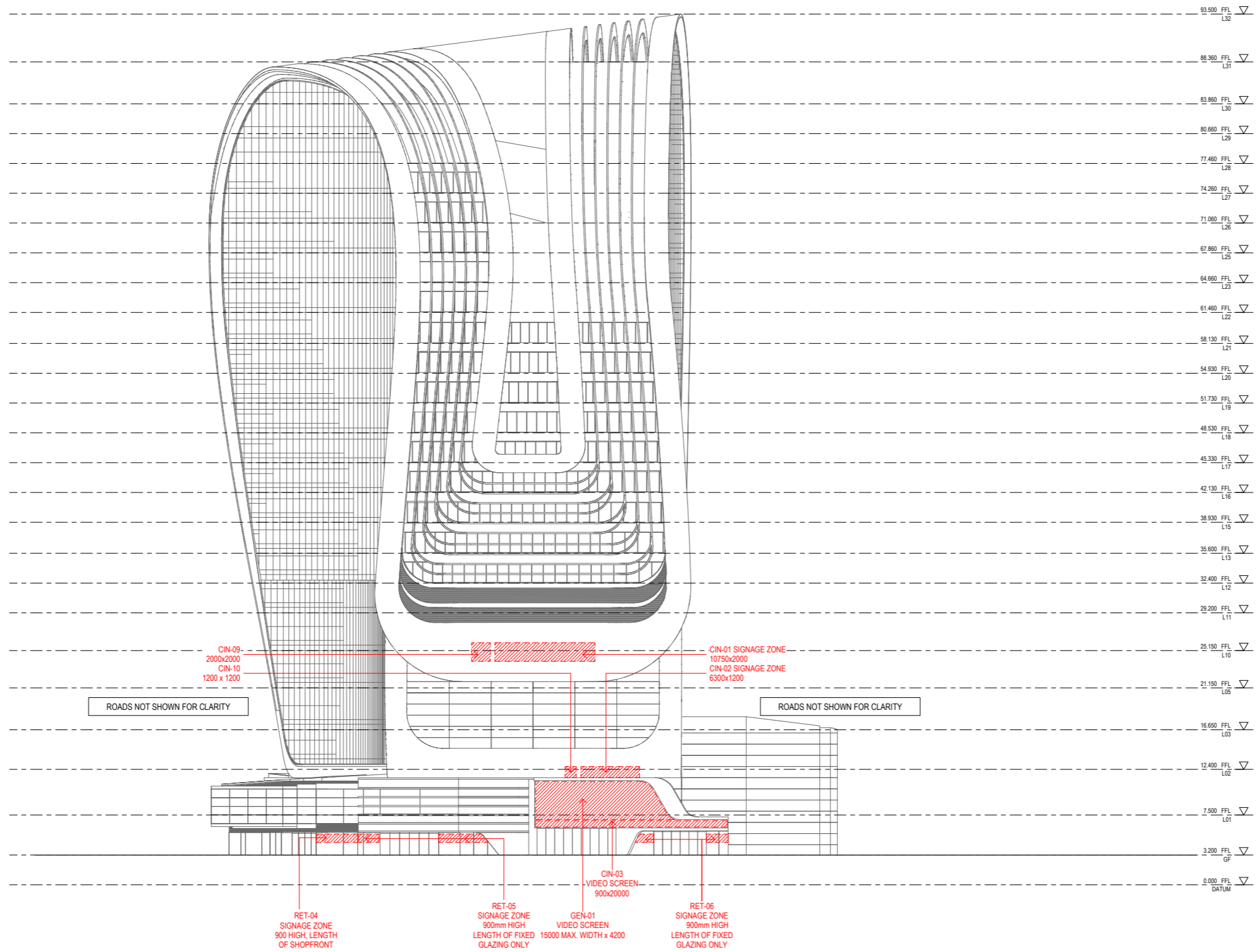
DRAWING TITLE  
**GA ELEVATIONS - SHEET 2**

**FOR APPROVAL**  
**FOR INFORMATION ONLY**

SCALE	DRAWN	CHECKED	REVIEWED	APPROVED
1:200	SP	MH	MH	JEL
PROJECT NUMBER	DRAWING NUMBER	REV		
A004409	ARC-HSL-DD-1151	F		

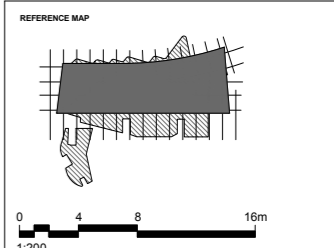
Original Sheet Size B1 - 1000 x 707mm  
 M01-2017-10-18-PM

**SIGNAGE TYPES AND LOCATION  
WEST ELEVATION**



DRAWING NO. SK026.3 REV B  
DATE: 18 SEPTEMBER 2017  
BASED ON: ARC-HSL-DD-1152 Rev G

DRAWING TITLE: SIGNAGE TYPES & LOCATIONS  
WEST ELEVATION  
**SHFA Signage not included**



**NOTES**

- DO NOT SCALE DRAWINGS. WRITTEN DIMENSIONS GOVERN.
- ALL DIMENSIONS ARE IN MILLIMETRES UNLESS NOTED OTHERWISE.
- ALL DIMENSIONS SHALL BE VERIFIED ON SITE BEFORE PROCEEDING WITH THE WORK. HASSELL SHALL BE NOTIFIED IN WRITING OF ANY DISCREPANCIES.
- THIS DRAWING MUST BE READ IN CONJUNCTION WITH ALL RELEVANT CONTRACTS, SPECIFICATIONS AND DRAWINGS.

© COPYRIGHT OF THIS DRAWING IS VESTED IN HASSELL LTD.  
2016 HASSELL LTD.  
THIS DRAWING IS AN UNCONTROLLED COPY, UNLESS NOTED OTHERWISE.

**FOR INFORMATION ONLY**

REV	DESCRIPTION	DATE
7	AMENDED DEVELOPMENT APPLICATION	14.02.17
6	AMENDED DEVELOPMENT APPLICATION	22.02.17
5	AMENDED DEVELOPMENT APPLICATION	16.03.17
4	AMENDED DEVELOPMENT APPLICATION	23.03.17
3	DEVELOPMENT APPLICATION	20.02.17
2	FINAL DRAFT	23.01.17
1	ISSUED FOR INFORMATION	19.01.17

**ARCHITECT**  
HASSELL Limited ABN 007 711 435  
LEVEL 2, PIER B9,  
23 HICKSON ROAD  
SYDNEY NSW 2000 AUSTRALIA  
SYDNEY@HASSELLSTUDIO.COM  
T +61 2 9151 2000 F +61 2 9151 2100

**HASSELL**

**pmcl**

**CLIENT**  
**Grocon**

**PROJECT**  
THE RIBBON HOTEL,  
SERVICED APARTMENTS AND RETAIL  
31 WHEAT ROAD, SYDNEY

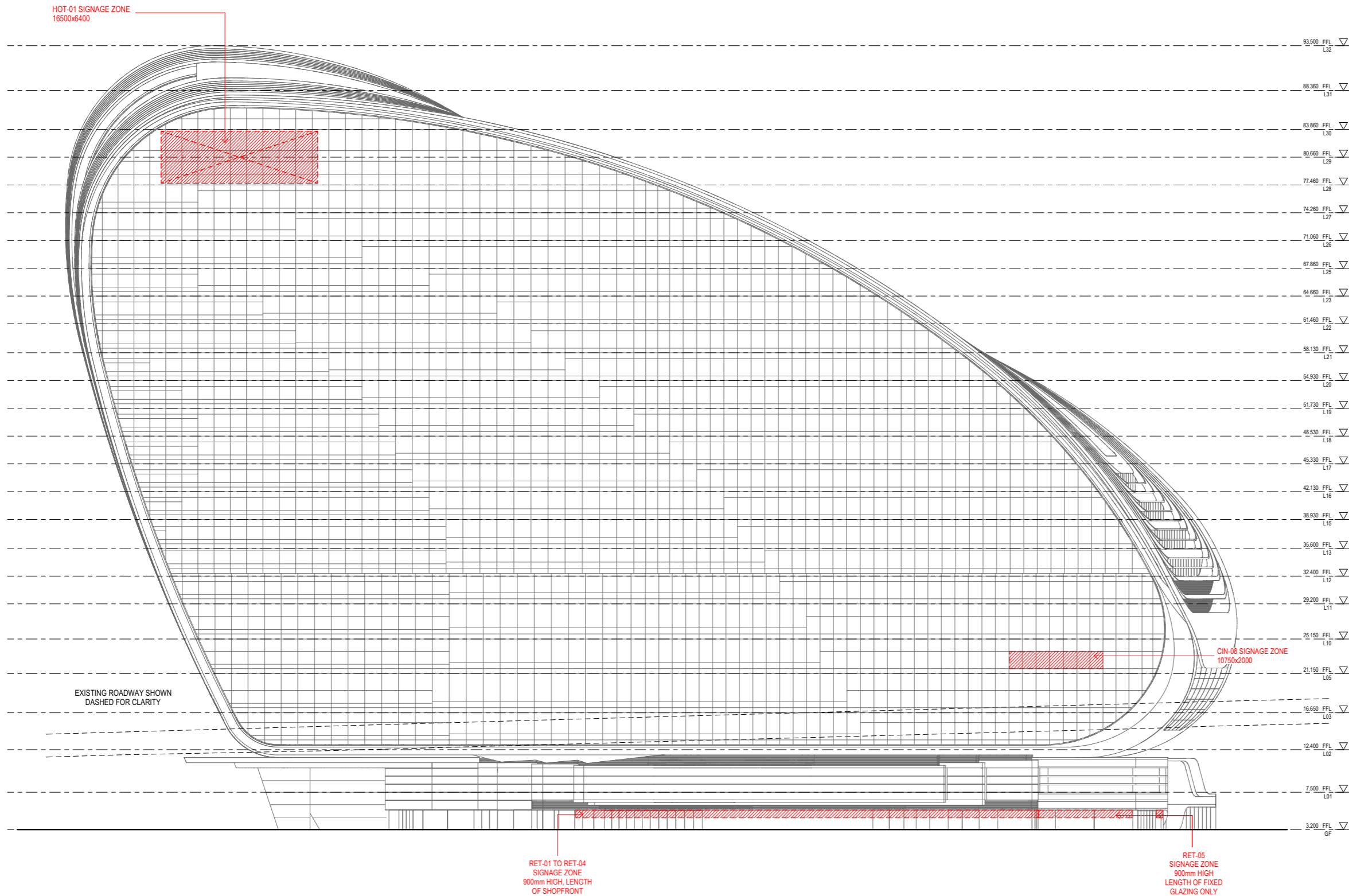
**DRAWING TITLE**  
GA ELEVATIONS - SHEET 3

**FOR APPROVAL**  
**FOR INFORMATION ONLY**

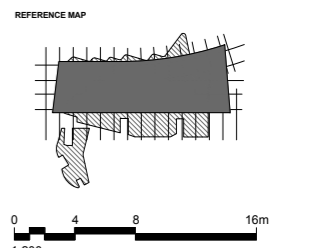
SCALE	DRAWN	CHECKED	REVIEWED	APPROVED
1:200	SP	IMH	IMH	IEL
PROJECT NUMBER	DRAWING NUMBER		DATE	BY
A004409	ARC-HSL-DD-1152		18/09/17	IEL

Original Sheet Size B1-1000 x 707mm

**SIGNAGE TYPES AND LOCATIONS  
NORTH ELEVATION**



DRAWING NO: SK026.4 REV B  
 DATE: 18 SEPTEMBER 2017  
 BASED ON: ARC-HSL-DD-1153 Rev G  
 DRAWING TITLE: SIGNAGE TYPES & LOCATIONS  
 NORTH ELEVATION  
**SHFA Signage not included**



- NOTES**
- DO NOT SCALE DRAWINGS. WRITTEN DIMENSIONS GOVERN.
  - ALL DIMENSIONS ARE IN MILLIMETRES UNLESS NOTED OTHERWISE.
  - ALL DIMENSIONS SHALL BE VERIFIED ON SITE BEFORE PROCEEDING WITH THE WORK. HASSELL SHALL BE NOTIFIED IN WRITING OF ANY DISCREPANCIES.
  - THIS DRAWING MUST BE READ IN CONJUNCTION WITH ALL RELEVANT CONTRACTS, SPECIFICATIONS AND DRAWINGS.

© COPYRIGHT OF THIS DRAWING IS VESTED IN HASSELL. LTD.  
 2016 HASSELL. LTD.  
 THIS DRAWING IS AN UNCONTROLLED COPY. UNLESS NOTED OTHERWISE.

**FOR INFORMATION ONLY**

REV	DESCRIPTION	DATE
1	AMENDED DEVELOPMENT APPLICATION	18/09/17
2	AMENDED DEVELOPMENT APPLICATION	18/09/17
3	AMENDED DEVELOPMENT APPLICATION	18/09/17
4	AMENDED DEVELOPMENT APPLICATION	18/09/17
5	AMENDED DEVELOPMENT APPLICATION	18/09/17
6	AMENDED DEVELOPMENT APPLICATION	18/09/17
7	AMENDED DEVELOPMENT APPLICATION	18/09/17
8	AMENDED DEVELOPMENT APPLICATION	18/09/17
9	AMENDED DEVELOPMENT APPLICATION	18/09/17
10	AMENDED DEVELOPMENT APPLICATION	18/09/17
11	AMENDED DEVELOPMENT APPLICATION	18/09/17
12	AMENDED DEVELOPMENT APPLICATION	18/09/17
13	AMENDED DEVELOPMENT APPLICATION	18/09/17
14	AMENDED DEVELOPMENT APPLICATION	18/09/17
15	AMENDED DEVELOPMENT APPLICATION	18/09/17
16	AMENDED DEVELOPMENT APPLICATION	18/09/17
17	AMENDED DEVELOPMENT APPLICATION	18/09/17
18	AMENDED DEVELOPMENT APPLICATION	18/09/17
19	AMENDED DEVELOPMENT APPLICATION	18/09/17
20	AMENDED DEVELOPMENT APPLICATION	18/09/17
21	AMENDED DEVELOPMENT APPLICATION	18/09/17
22	AMENDED DEVELOPMENT APPLICATION	18/09/17
23	AMENDED DEVELOPMENT APPLICATION	18/09/17
24	AMENDED DEVELOPMENT APPLICATION	18/09/17
25	AMENDED DEVELOPMENT APPLICATION	18/09/17
26	AMENDED DEVELOPMENT APPLICATION	18/09/17
27	AMENDED DEVELOPMENT APPLICATION	18/09/17
28	AMENDED DEVELOPMENT APPLICATION	18/09/17
29	AMENDED DEVELOPMENT APPLICATION	18/09/17
30	AMENDED DEVELOPMENT APPLICATION	18/09/17
31	AMENDED DEVELOPMENT APPLICATION	18/09/17
32	AMENDED DEVELOPMENT APPLICATION	18/09/17
33	AMENDED DEVELOPMENT APPLICATION	18/09/17
34	AMENDED DEVELOPMENT APPLICATION	18/09/17
35	AMENDED DEVELOPMENT APPLICATION	18/09/17
36	AMENDED DEVELOPMENT APPLICATION	18/09/17
37	AMENDED DEVELOPMENT APPLICATION	18/09/17
38	AMENDED DEVELOPMENT APPLICATION	18/09/17
39	AMENDED DEVELOPMENT APPLICATION	18/09/17
40	AMENDED DEVELOPMENT APPLICATION	18/09/17
41	AMENDED DEVELOPMENT APPLICATION	18/09/17
42	AMENDED DEVELOPMENT APPLICATION	18/09/17
43	AMENDED DEVELOPMENT APPLICATION	18/09/17
44	AMENDED DEVELOPMENT APPLICATION	18/09/17
45	AMENDED DEVELOPMENT APPLICATION	18/09/17
46	AMENDED DEVELOPMENT APPLICATION	18/09/17
47	AMENDED DEVELOPMENT APPLICATION	18/09/17
48	AMENDED DEVELOPMENT APPLICATION	18/09/17
49	AMENDED DEVELOPMENT APPLICATION	18/09/17
50	AMENDED DEVELOPMENT APPLICATION	18/09/17
51	AMENDED DEVELOPMENT APPLICATION	18/09/17
52	AMENDED DEVELOPMENT APPLICATION	18/09/17
53	AMENDED DEVELOPMENT APPLICATION	18/09/17
54	AMENDED DEVELOPMENT APPLICATION	18/09/17
55	AMENDED DEVELOPMENT APPLICATION	18/09/17
56	AMENDED DEVELOPMENT APPLICATION	18/09/17
57	AMENDED DEVELOPMENT APPLICATION	18/09/17
58	AMENDED DEVELOPMENT APPLICATION	18/09/17
59	AMENDED DEVELOPMENT APPLICATION	18/09/17
60	AMENDED DEVELOPMENT APPLICATION	18/09/17
61	AMENDED DEVELOPMENT APPLICATION	18/09/17
62	AMENDED DEVELOPMENT APPLICATION	18/09/17
63	AMENDED DEVELOPMENT APPLICATION	18/09/17
64	AMENDED DEVELOPMENT APPLICATION	18/09/17
65	AMENDED DEVELOPMENT APPLICATION	18/09/17
66	AMENDED DEVELOPMENT APPLICATION	18/09/17
67	AMENDED DEVELOPMENT APPLICATION	18/09/17
68	AMENDED DEVELOPMENT APPLICATION	18/09/17
69	AMENDED DEVELOPMENT APPLICATION	18/09/17
70	AMENDED DEVELOPMENT APPLICATION	18/09/17
71	AMENDED DEVELOPMENT APPLICATION	18/09/17
72	AMENDED DEVELOPMENT APPLICATION	18/09/17
73	AMENDED DEVELOPMENT APPLICATION	18/09/17
74	AMENDED DEVELOPMENT APPLICATION	18/09/17
75	AMENDED DEVELOPMENT APPLICATION	18/09/17
76	AMENDED DEVELOPMENT APPLICATION	18/09/17
77	AMENDED DEVELOPMENT APPLICATION	18/09/17
78	AMENDED DEVELOPMENT APPLICATION	18/09/17
79	AMENDED DEVELOPMENT APPLICATION	18/09/17
80	AMENDED DEVELOPMENT APPLICATION	18/09/17
81	AMENDED DEVELOPMENT APPLICATION	18/09/17
82	AMENDED DEVELOPMENT APPLICATION	18/09/17
83	AMENDED DEVELOPMENT APPLICATION	18/09/17
84	AMENDED DEVELOPMENT APPLICATION	18/09/17
85	AMENDED DEVELOPMENT APPLICATION	18/09/17
86	AMENDED DEVELOPMENT APPLICATION	18/09/17
87	AMENDED DEVELOPMENT APPLICATION	18/09/17
88	AMENDED DEVELOPMENT APPLICATION	18/09/17
89	AMENDED DEVELOPMENT APPLICATION	18/09/17
90	AMENDED DEVELOPMENT APPLICATION	18/09/17
91	AMENDED DEVELOPMENT APPLICATION	18/09/17
92	AMENDED DEVELOPMENT APPLICATION	18/09/17
93	AMENDED DEVELOPMENT APPLICATION	18/09/17
94	AMENDED DEVELOPMENT APPLICATION	18/09/17
95	AMENDED DEVELOPMENT APPLICATION	18/09/17
96	AMENDED DEVELOPMENT APPLICATION	18/09/17
97	AMENDED DEVELOPMENT APPLICATION	18/09/17
98	AMENDED DEVELOPMENT APPLICATION	18/09/17
99	AMENDED DEVELOPMENT APPLICATION	18/09/17
100	AMENDED DEVELOPMENT APPLICATION	18/09/17

**ARCHITECT**  
 HASSELL Limited ABN 007 711 435  
 LEVEL 2, PIER 89,  
 23 HICKSON ROAD  
 SYDNEY NSW 2000 AUSTRALIA  
 SYDNEY@HASSELLSTUDIO.COM  
 T +61 2 9101 2000 F +61 2 9101 2100

**HASSELL**

**pmcl**

**CLIENT**  
**Grocon**

**PROJECT**  
 THE RIBBON HOTEL,  
 SERVICED APARTMENTS AND RETAIL  
 31 WHEAT ROAD, SYDNEY

**DRAWING TITLE**  
 GA ELEVATIONS - SHEET 4

**FOR APPROVAL**  
**FOR INFORMATION ONLY**

SCALE 1:200	DRAWN	DESIGNED	REVIEWED	APPROVED
1:200	SP	MH	MH	JEL
PROJECT NUMBER	DRAWING NUMBER	REV		
A004409	ARC-HSL-DD-1153	F		

Original Sheet Size B1 - 1000 x 707mm