

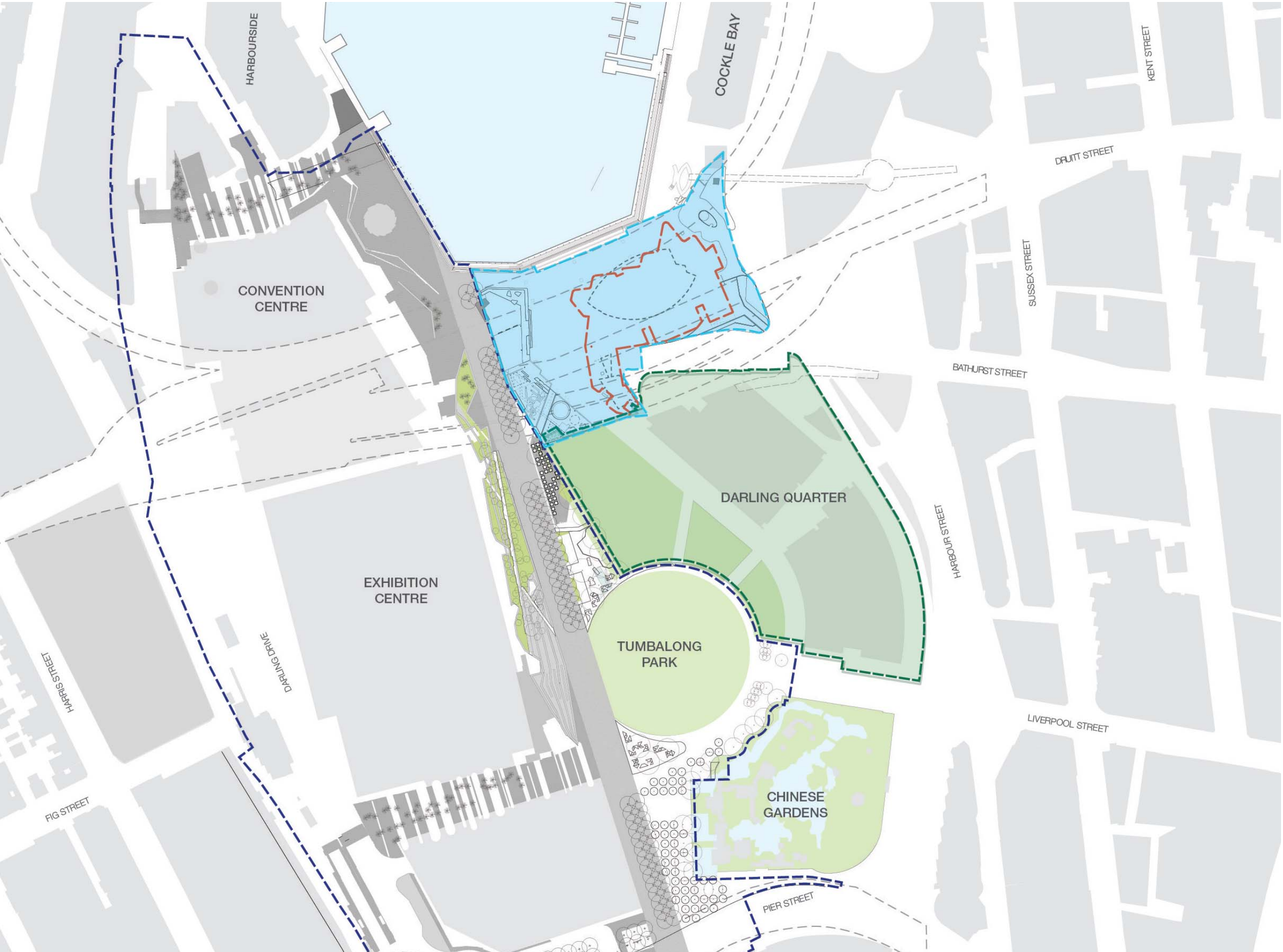
31 Wheat Rd

Sydney

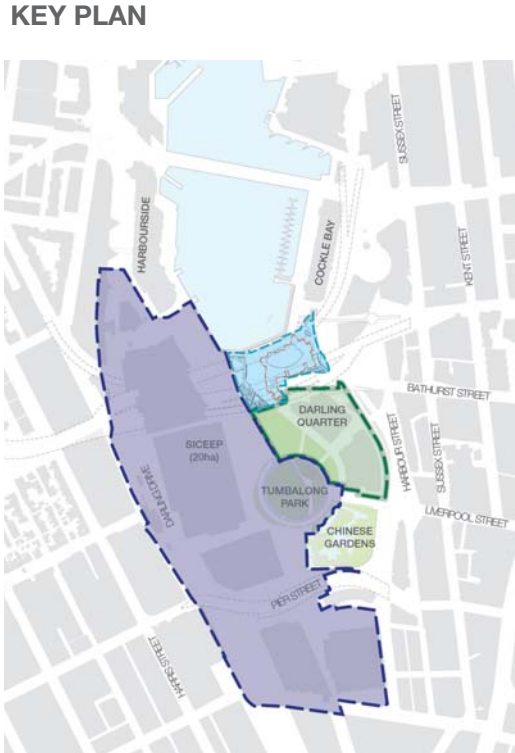
Development Application Drawing List - LANDSCAPE

12023-LDA01	Public Domain Context Plan
12023-LDA02	Public Domain Plan
12023-LDA03	Public Domain Sections
12023-LDA04	Detail Playground Plan
12023-LDA05	Detail Eastern Public Domain Plan and Section
12023-LDA06	Public Domain Planting Plan

Date: 16.12.2015 [Rev F]



- LEGEND**
- - - PROPOSED LEASE LINE
 - - - SICEEP BOUNDARY
 - DARLING QUARTER (approx 28,200m²)
 - IMAX THEATRE FOOTPRINT
 - ZONE OF INFLUENCE (approx 10,600m²)



Public Domain Plan



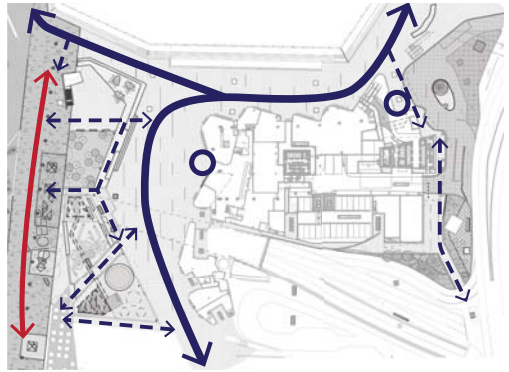
Refer LDA 05 for Detail Eastern Public Domain Plan

Refer LDA 04 for Detail Playground Plan

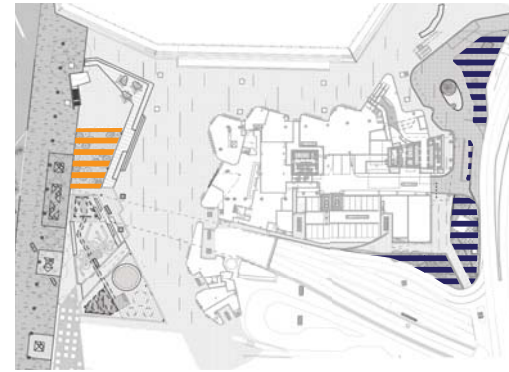
Key

- 1. Harbour Street pedestrian link**
Paved footpath with pedestrian lighting and / or opportunity for public art with heritage interpretation. The existing substation and freeway pylon will sit amongst a field of low rainforest planting. Along the western side of the path is a taller urban rainforest (with Kentia, Livistona palm and various fern species).
- 2. Harbour St/ Wheat Road porte cochere & building entries**
The port cochere and drop off will be realigned and upgraded to create a new street address for the hotel and serviced apartment lobbies. It has been designed to be a pedestrian oriented environment with unit paving on both the roadway and footpaths, flush kerbs along the drop off lane and bollards which demarcate the two. Located at the centre of the drop off is a water feature with incorporated lighting and lush rainforest planting.
- 3. Cockle Bay/ Darling Harbour public domain interface**
New high quality unit paving, in accordance with Darling Harbour Public Domain Manual, will be integrated with the existing Darling Harbour precinct paver in a harmonious way. The proposed new paving will feature a number of well crafted slotted drains to provide improved site drainage.
- 4. Ground floor retail interfaces**
The public domain will be activated along the building edge by new retail, IMAX lobby, and an outdoor 'city screen'. Outdoor seating areas will be provided adjacent the retail tenancies.
- 5. Palm grove revitalisation**
Features a new, large rationalised gathering space which pedestrians can easily move through. A large seating edge has been provided to the west that provides numerous seating options for the public. The existing palm grove (*Livistona australis*) has been relocated to an upper level turf area, which is designed for passive recreation. The existing hardstand (containing the AV control building) has been retained, with upgraded paving and finishes. A large timber deck is provided to the east of the control building, with bespoke group seating opportunities located in a position which overlooks the harbour and city beyond. Existing *Phoenix canariensis* palms will be left as an important row of trees lining the valley floor of Darling Harbour.
- 6. Darling Quarter playground interface**
A new playground is proposed, aligning with the existing Darling Quarter edge which further strengthens the existing playground and pedestrian boulevard. The overhead freeways and pylons provides an ideal framework for the location of a giant layered climbing net structure and integrated slide scape. These items will extend the play opportunities currently provided at the Darling Quarter playground and provide an exciting destination for young adults.
- 7. Relocated existing carousel**
The existing carousel has been relocated and is now incorporated within the playground extension of Darling Quarter playground.

Design Diagrams



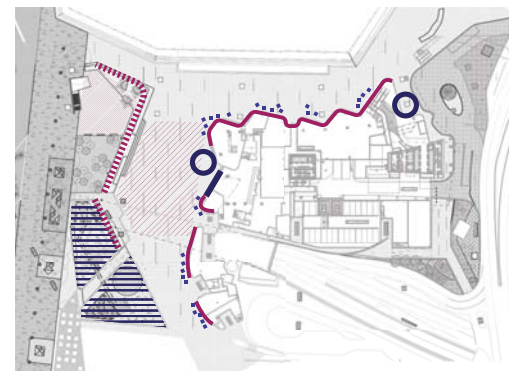
- Pedestrian Circulation**
- Main circulation path
 - Cross site connections
 - Main building entrances
 - SICEEP boulevard



- Planting Habitats**
- Solar access through freeway over - suitable for lawn
 - Shaded habitat - suitable for rainforest species

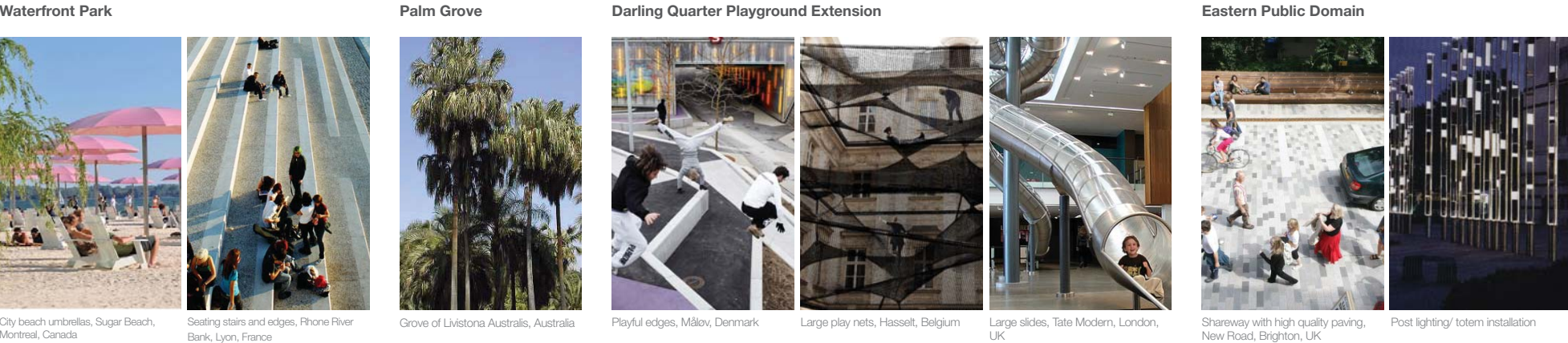


- Spatial zoning**
- Small event space
 - Relocated palm grove and lawn
 - Large event space
 - Terraced edge
 - Playground extension
 - Eastern pedestrian entry
 - Wheat Road drop off

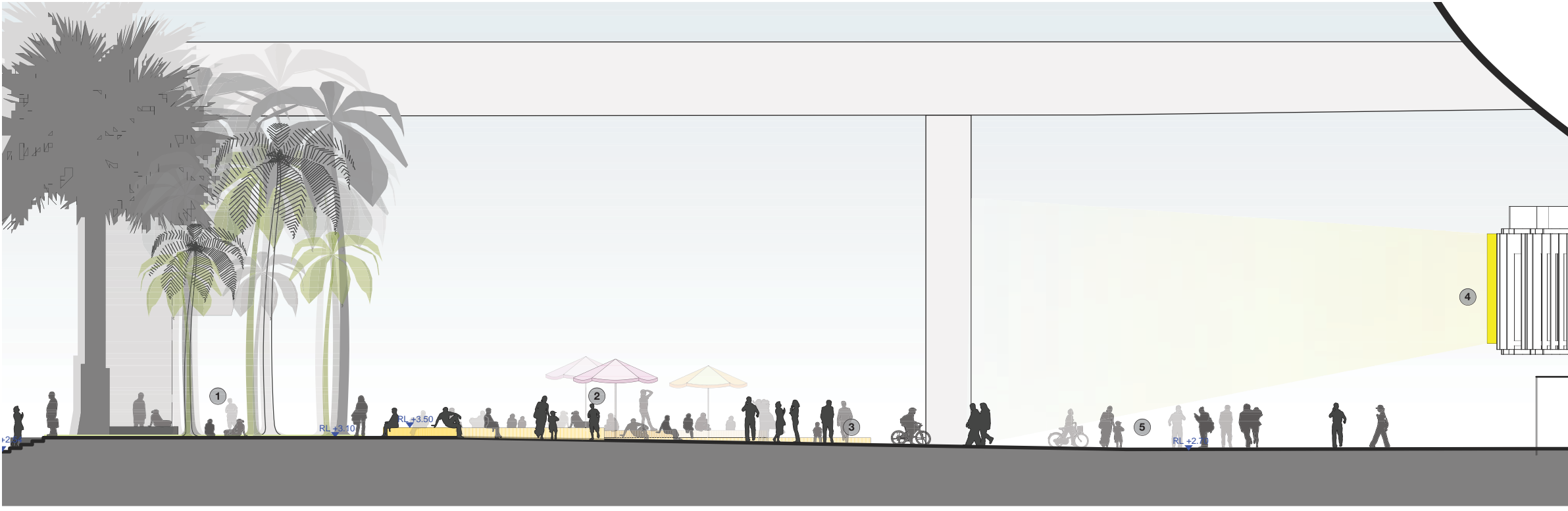


- Activation**
- Active Seating edge
 - Outdoor dining
 - Active Building Edge
 - City screen
 - Playground
 - Main building entrances
 - Large gathering space
 - Small gathering space

Precedents

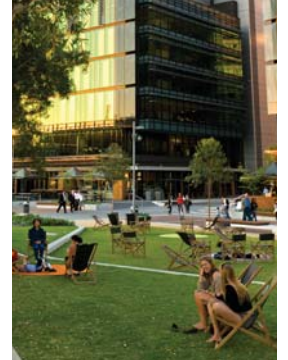


Section A | Western Public Domain



Key

- 1. Relocated Palm Grove and turf
- 2. Umbrellas and timber decking
- 3. Seating edges
- 4. City screen
- 5. Large event space



Seating Lawn, Darling Quarter, Sydney

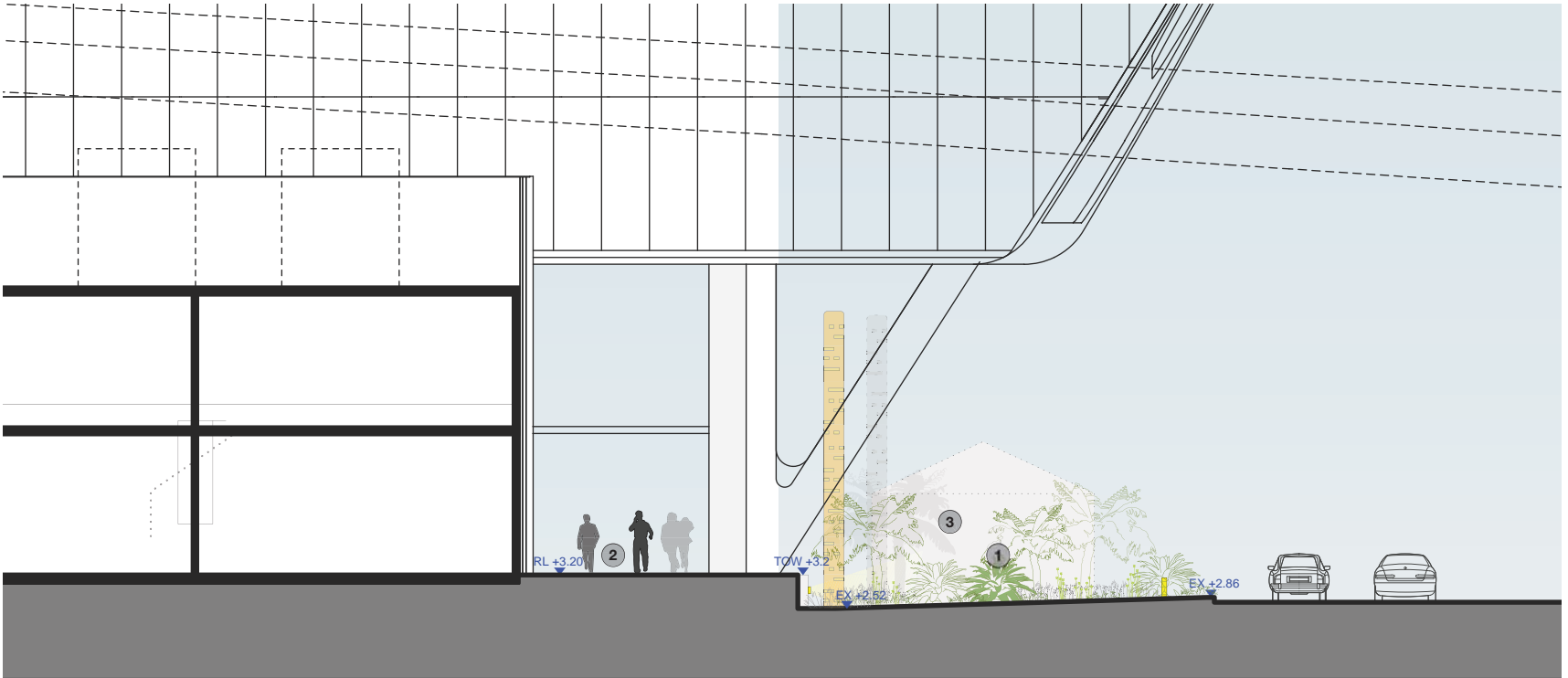


City screen, Federation Square, Melbourne



Evening event on the lawn, Miami Beach Soundscape, Miami, USA

Section B | Harbour Street/ Wheat Road and Eastern Public Domain



Key

- 1. Urban rainforest
- 2. Pedestrian walk (with pedestrian lighting)
- 3. Possible interpretation to heritage substation



Under freeway art installation, Ultimo

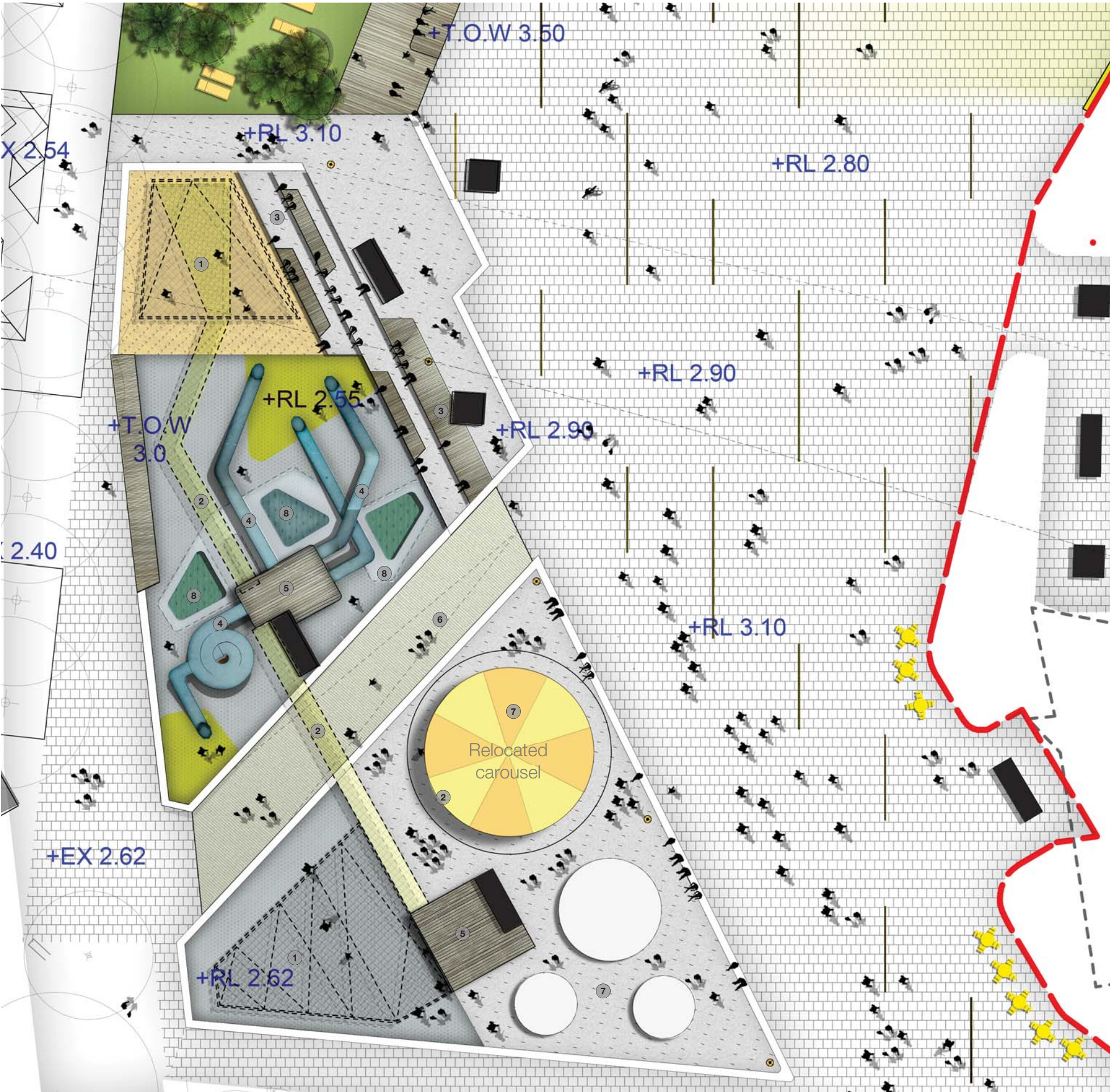


Rainforest garden, Capita Centre, Sydney



Heritage interpretation, Glebe

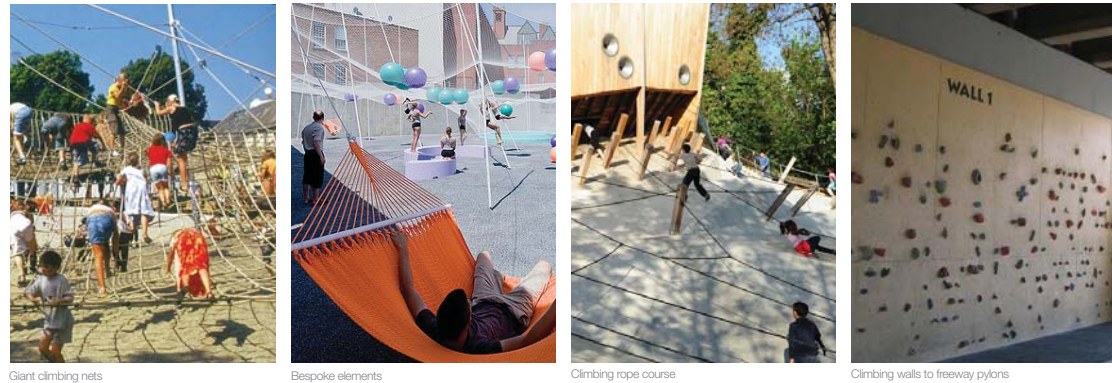
Playground Detail Plan



Key

- 1. Getting Up/ Climbing**
 - Giant nets
 - Climbing walls
 - 2. Moving Through**
 - Moving from lookout platforms via high level net passages and rope tunnels
 - 3. Seating Edge**
 - Terraced down to playground level.
 - 4. Slide-Scape**
 - Giant slides
 - Twisted forms
 - 5. Lookouts**
 - Accessed by climbing up giant nets and climbing walls
 - Possible use of freeway pylons for support
 - 6. Through Link**
 - On grade west-east connection
 - 7. Relocated carousel**
 - Carousel relocated in line with Darling Quarter play ground extension. Ample surrounding space provided for circulation, queuing, ticket booth and alternative rides.
 - 8. Sculptural Land Form + In Ground Trampolines**
 - 3d concrete terrain sculpted for parkour with in ground trampolines flush to concrete
- Please note: Public domain material and fixture selection will be specified in accordance with the requirements of the Darling Harbour Public Domain Manual.

Getting Up/ Climbing



Slide-Scape



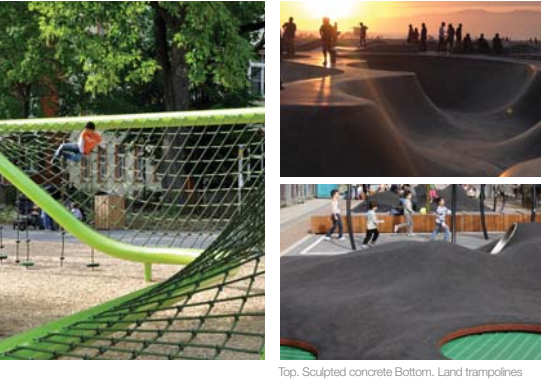
Moving Through

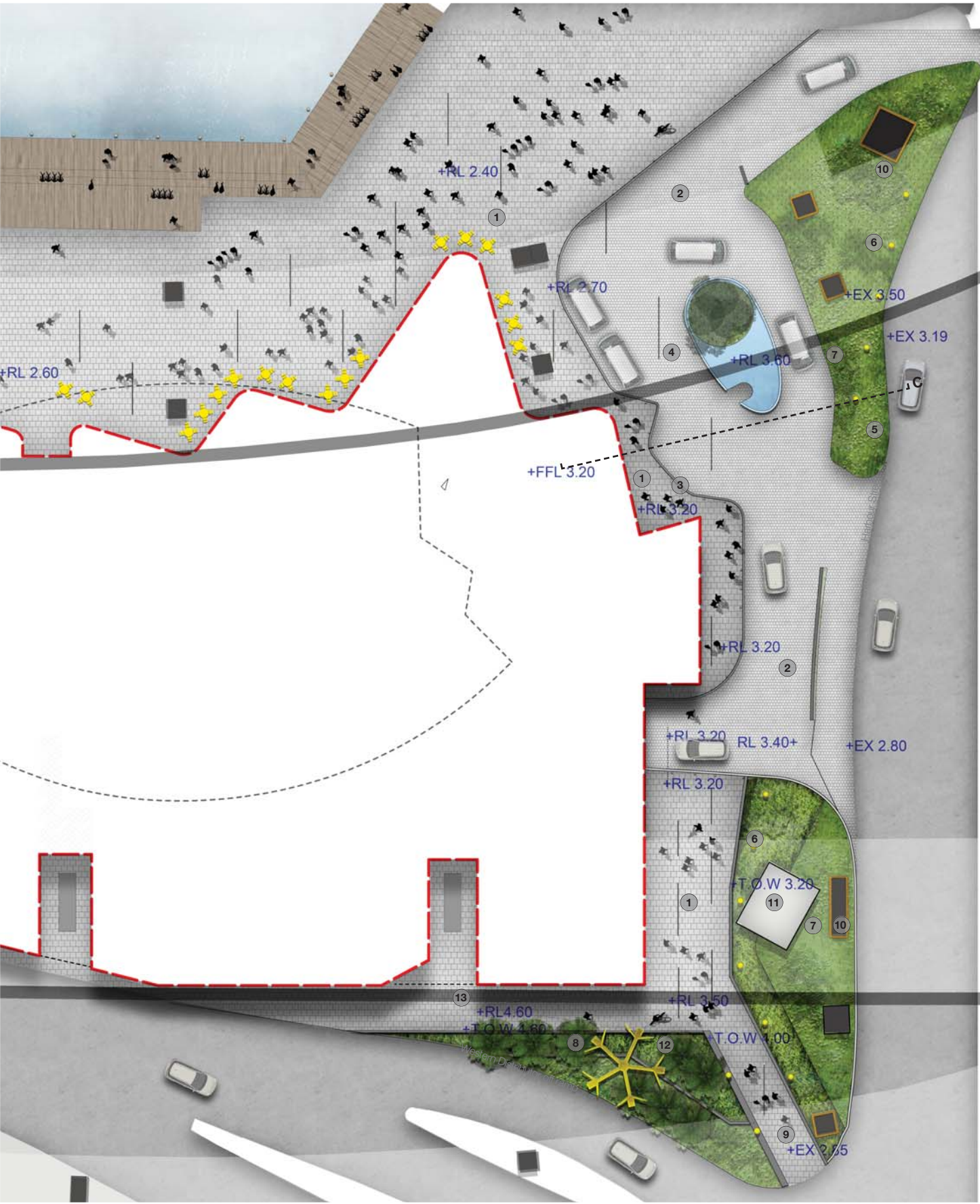


Playful Forms



Sculptural Landforms



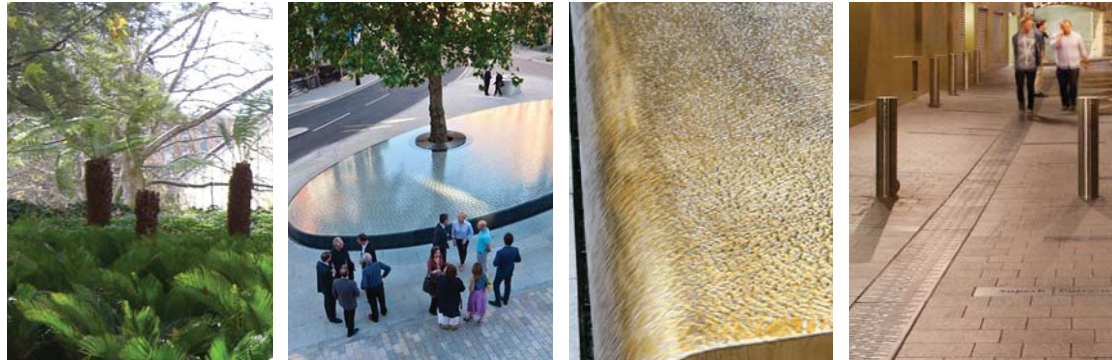


Key

1. Paving finish 1 - pedestrian areas
2. Paving finish 2 - carriageway
3. Bollards
4. Port cochere and taxi zone
5. Median with new flood barrier wall along Harbour St (TOW 3.50)
6. Repetitious upright elements - possible public art installation with heritage interpretation, lighting, or flag poles
7. Low rainforest planting - allowing views through
8. Rainforest planting - including taller palm species
9. Pedestrian light walk - sculptural upright elements drawing pedestrians into the site. Angled walls/edges. Paving high point at RL3.50 provides flood barrier
10. Cladding to freeway pylons
11. Possible interpretation to heritage substation
12. Relocated sculpture
13. Access for cable vault (existing infrastructure)
14. Raised water feature with edge overflow incorporating lighting, rainforest planting and large feature tree of Ficus benjamina.

Please note: Public domain material and fixture selection will be specified in accordance with the requirements of the Darling Harbour Public Domain Manual.

Precedent images



Shade tolerant mass planting Raised water feature incorporating planting and lighting Raised water feature with edge overflow Flush paving with bollards

Underpass Opportunities



Cladding of freeway infrastructure Subtle light sculpture within planting Accentuate building address Repetitive totem structures

Eastern public domain detail section C 1:100

