

1:200

**NOTES**

- DO NOT SCALE DRAWINGS. WRITTEN DIMENSIONS GOVERN.
- ALL DIMENSIONS ARE IN MILLIMETRES UNLESS NOTED OTHERWISE.
- ALL DIMENSIONS SHALL BE VERIFIED ON SITE BEFORE PROCEEDING WITH THE WORK. HASSELL SHALL BE NOTIFIED IN WRITING OF ANY DISCREPANCIES.
- THIS DRAWING MUST BE READ IN CONJUNCTION WITH ALL RELEVANT CONTRACTS, SPECIFICATIONS AND DRAWINGS.

© COPYRIGHT OF THIS DRAWING IS VESTED IN HASSELL LTD. 2015 HASSELL LTD.

THIS DRAWING IS AN UNCONTROLLED COPY, UNLESS NOTED OTHERWISE.

REV	DESCRIPTION	DATE
D	AMENDED DEVELOPMENT APPLICATION	16.12.13
C	AMENDED DEVELOPMENT APPLICATION	15.12.15
B	AMENDED DEVELOPMENT APPLICATION	23.10.15
A	DEVELOPMENT APPLICATION	20.08.13
-	ISSUED FOR INFORMATION	23.07.13

**ARCHITECT**

HASSELL Limited ABN 007 711 435  
 LEVEL 2, PIER 6/9,  
 23 HICKSON ROAD  
 SYDNEY NSW 2000 AUSTRALIA  
 SYDNEY@HASSELLSTUDIO.COM  
 T +61 2 9101 2000 F +61 2 9101 2100

**HASSELL**

**RUSSELL & GEORGE** **pmdl**

**CLIENT**

**Grocon**

**PROJECT**

THE RIBBON HOTEL,  
 SERVICED APARTMENTS AND RETAIL  
 31 WHEAT ROAD, SYDNEY

**DRAWING TITLE**

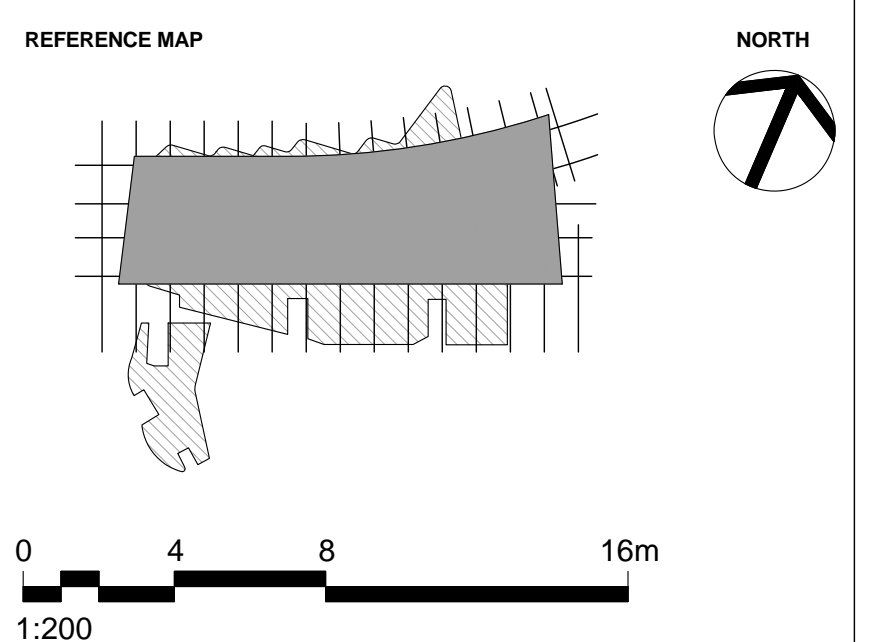
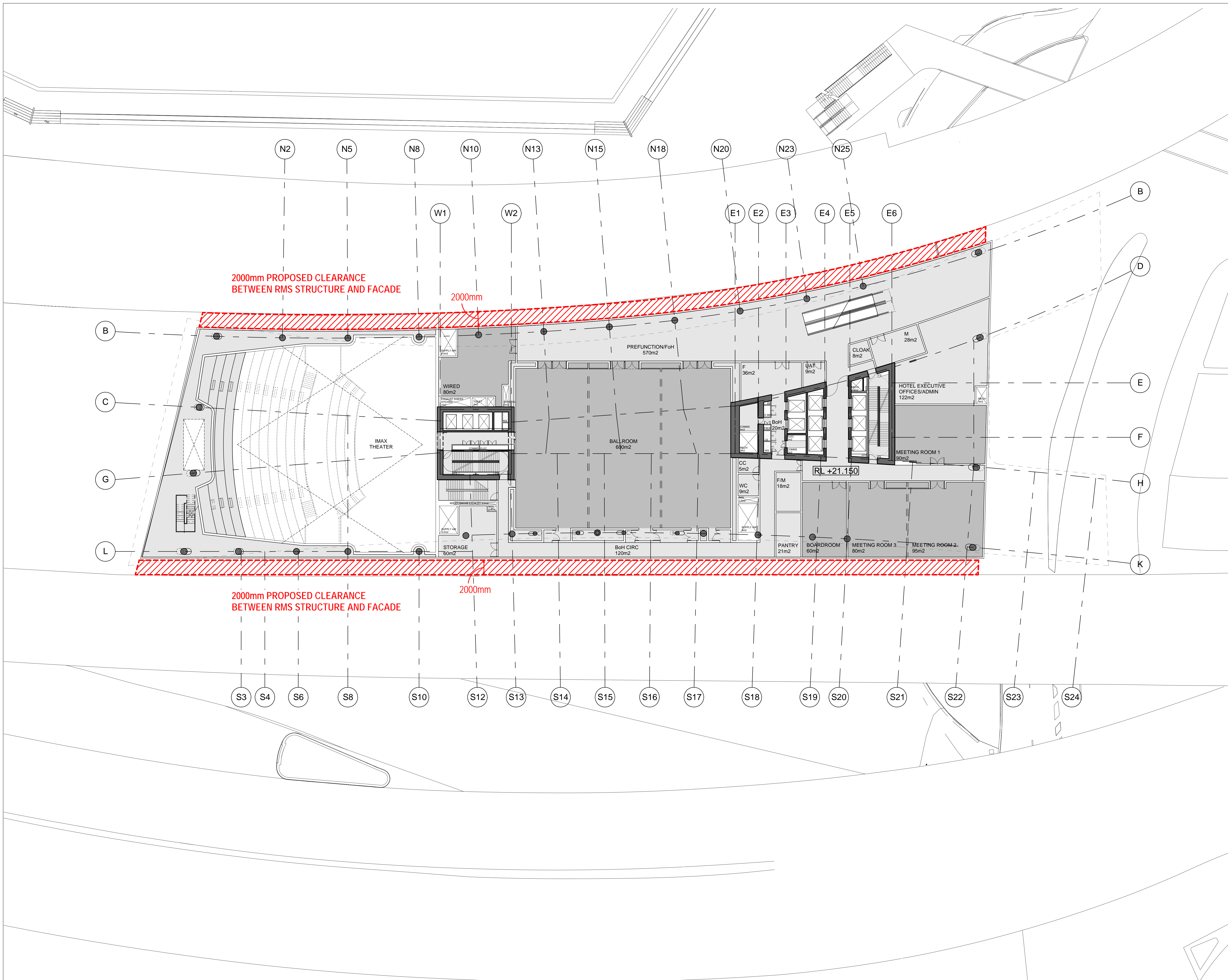
GROUND FLOOR PROPOSED  
 CLEARANCES TO RMS ROADWAY  
 STRUCTURES

**STATUS**

FOR APPROVAL

SCALE @ B1	DRAWN	CO-ORD	REVIEWED	APPROVED
1:200	RT	JO	JO	CW
PROJECT NUMBER	DRAWING NUMBER	REV		
A004409	ARC-HSL-DD-1070	D		

12/10/2015 3:18:28 PM \\pmp\proj\202010324-61A-P\Working\B\hsl\_working\RT\004409\_TheRibbon\_DA\_Drawing\5000409\_TheRibbon\_Hotel-DA\_151216\_1426.dwg



**NOTES**

- DO NOT SCALE DRAWINGS. WRITTEN DIMENSIONS GOVERN.
- ALL DIMENSIONS ARE IN MILLIMETRES UNLESS NOTED OTHERWISE.
- ALL DIMENSIONS SHALL BE VERIFIED ON SITE BEFORE PROCEEDING WITH THE WORK. HASSELL SHALL BE NOTIFIED IN WRITING OF ANY DISCREPANCIES.
- THIS DRAWING MUST BE READ IN CONJUNCTION WITH ALL RELEVANT CONTRACTS, SPECIFICATIONS AND DRAWINGS.

© COPYRIGHT OF THIS DRAWING IS VESTED IN HASSELL, LTD.  
2015 HASSELL, LTD.

THIS DRAWING IS AN UNCONTROLLED COPY, UNLESS NOTED OTHERWISE.

REV	DESCRIPTION	DATE
C	AMENDED DEVELOPMENT APPLICATION	15.12.15
B	AMENDED DEVELOPMENT APPLICATION	23.10.15
A	DEVELOPMENT APPLICATION	20.08.13
-	ISSUED FOR INFORMATION	23.07.13

**ARCHITECT**  
 HASSELL Limited ABN 007 711 435  
 LEVEL 2, PIER 8/9,  
 23 HICKSON ROAD  
 SYDNEY NSW 2000 AUSTRALIA  
 SYDNEY@HASSELLSTUDIO.COM  
 T +61 2 9101 2000 F +61 2 9101 2100

**HASSELL**

**RUSSELL & GEORGE** **pmdl**

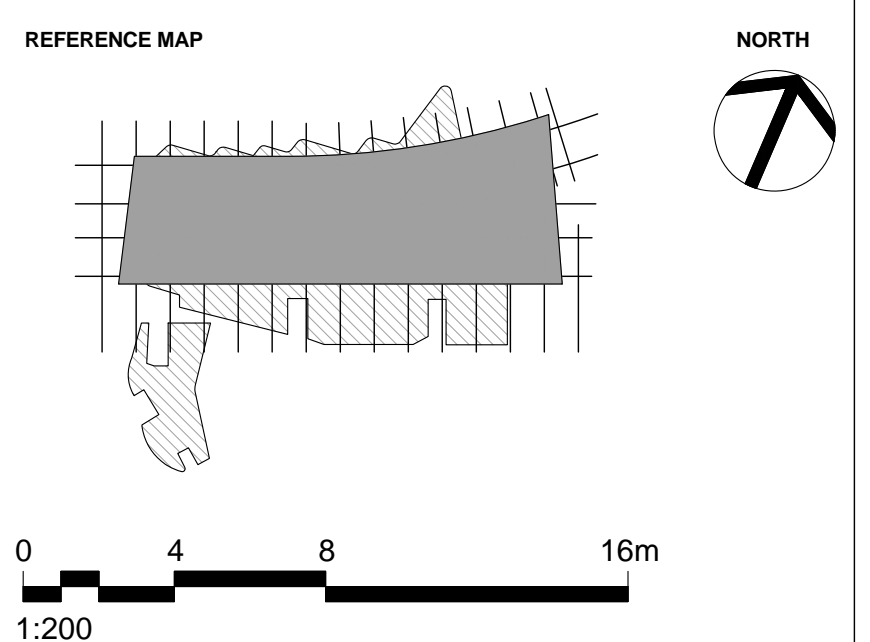
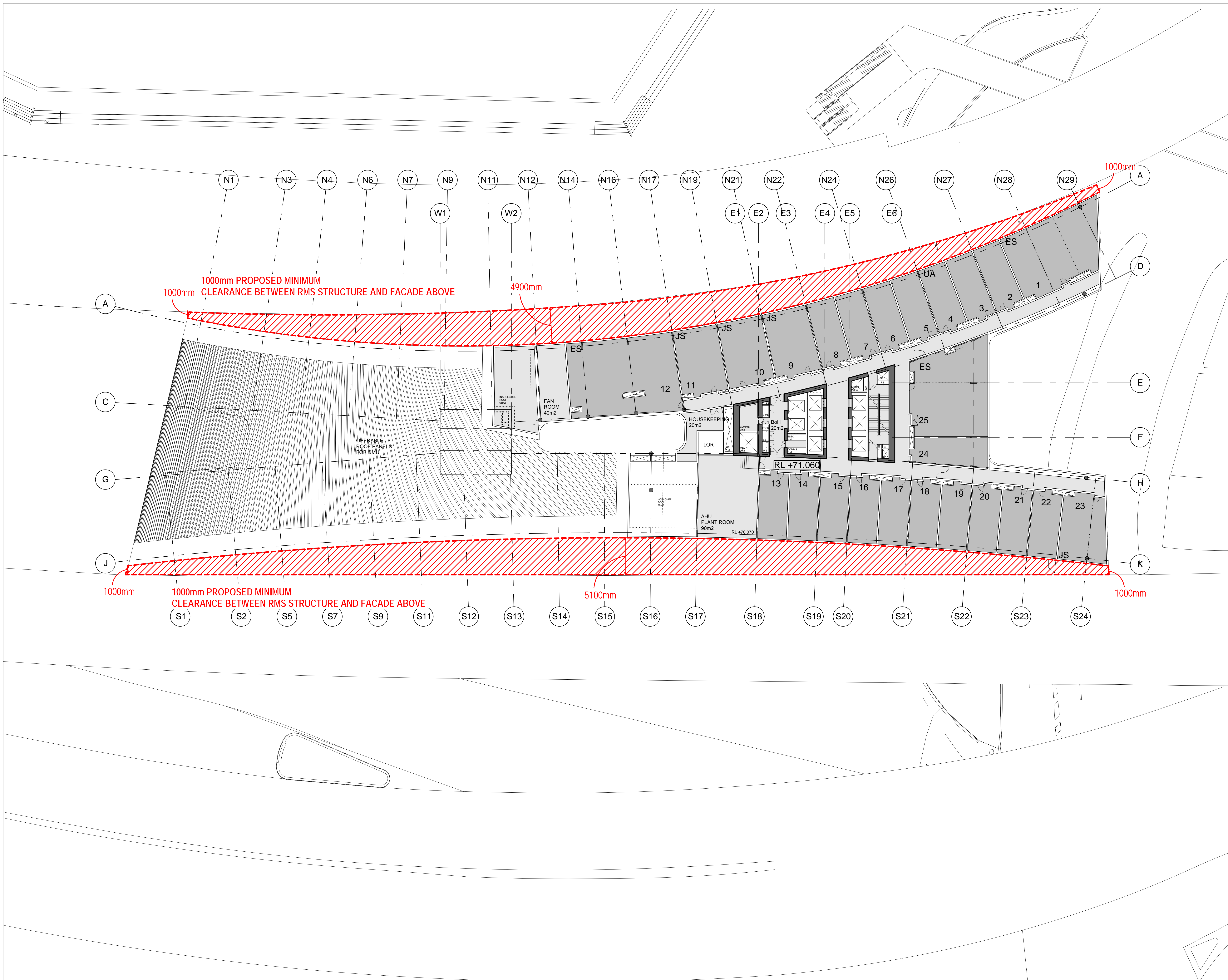
**CLIENT**  
**Grocon**

**PROJECT**  
 THE RIBBON HOTEL,  
 SERVICED APARTMENTS AND RETAIL  
 31 WHEAT ROAD, SYDNEY

**DRAWING TITLE**  
 PODIUM LEVEL PROPOSED  
 CLEARANCES TO RMS ROADWAY  
 STRUCTURES

**STATUS**  
 FOR APPROVAL

SCALE @ B1	DRAWN	CO-ORD	REVIEWED	APPROVED
1:200	RT	JO	JO	CW
PROJECT NUMBER	DRAWING NUMBER	REV		
A004409	ARC-HSL-DD-1071	C		



**NOTES**

- DO NOT SCALE DRAWINGS. WRITTEN DIMENSIONS GOVERN.
- ALL DIMENSIONS ARE IN MILLIMETRES UNLESS NOTED OTHERWISE.
- ALL DIMENSIONS SHALL BE VERIFIED ON SITE BEFORE PROCEEDING WITH THE WORK. HASSELL SHALL BE NOTIFIED IN WRITING OF ANY DISCREPANCIES.
- THIS DRAWING MUST BE READ IN CONJUNCTION WITH ALL RELEVANT CONTRACTS, SPECIFICATIONS AND DRAWINGS.

© COPYRIGHT OF THIS DRAWING IS VESTED IN HASSELL LTD.  
2015 HASSELL LTD.

THIS DRAWING IS AN UNCONTROLLED COPY, UNLESS NOTED OTHERWISE.

REV	DESCRIPTION	DATE
C	AMENDED DEVELOPMENT APPLICATION	15.12.15
B	AMENDED DEVELOPMENT APPLICATION	23.10.15
A	DEVELOPMENT APPLICATION	20.08.13
-	ISSUED FOR INFORMATION	23.07.13

**ARCHITECT**  
 HASSELL Limited ABN 007 711 435  
 LEVEL 2, PIER 6/9,  
 23 HICKSON ROAD  
 SYDNEY NSW 2000 AUSTRALIA  
 SYDNEY@HASSELLSTUDIO.COM  
 T +61 2 9101 2000 F +61 2 9101 2100

**HASSELL**

**RUSSELL & GEORGE** **pmdl**

**CLIENT**  
**Grocon**

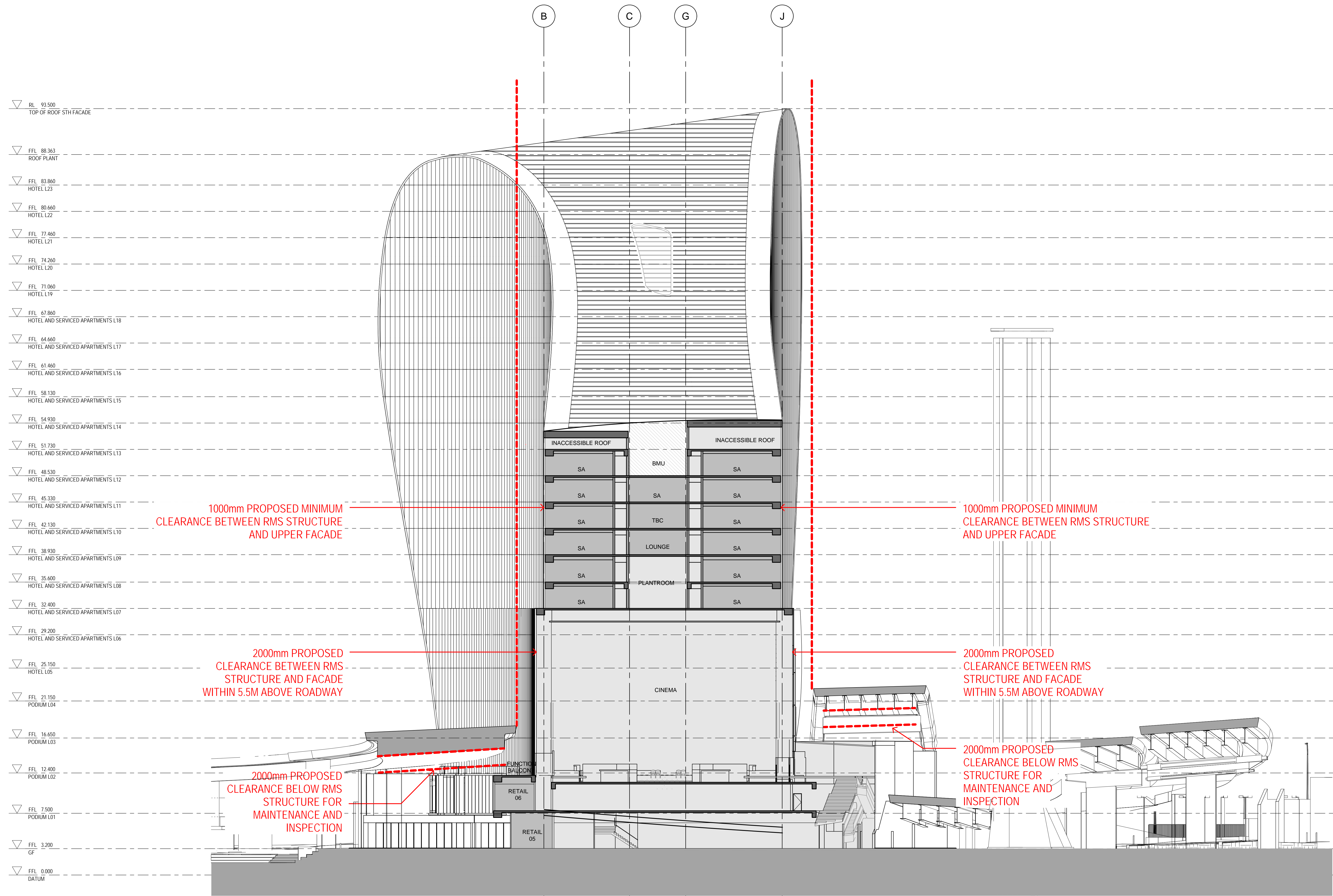
**PROJECT**  
 THE RIBBON HOTEL,  
 SERVICED APARTMENTS AND RETAIL  
 31 WHEAT ROAD, SYDNEY

**DRAWING TITLE**  
 HOTEL LEVEL PROPOSED  
 CLEARANCES TO RMS ROADWAY  
 STRUCTURES

**STATUS**  
 FOR APPROVAL

SCALE @ B1	DRAWN	CO-ORD	REVIEWED	APPROVED
1:200	RT	JO	JO	CW
PROJECT NUMBER	DRAWING NUMBER	REV		
A004409	ARC-HSL-DD-1072	C		

12/15/2015 12:43:55 PM \\preprod\20210324\41A-P\Working\Ribon\_TheRibbon\_DA\_Drawing\0409\_TheRibbon\_DA\_Drawing\0409\_TheRibbon\_DA\_151215\_063\_Amended\_Gridline\_C.dwg



1000mm PROPOSED MINIMUM CLEARANCE BETWEEN RMS STRUCTURE AND UPPER FACADE

1000mm PROPOSED MINIMUM CLEARANCE BETWEEN RMS STRUCTURE AND UPPER FACADE

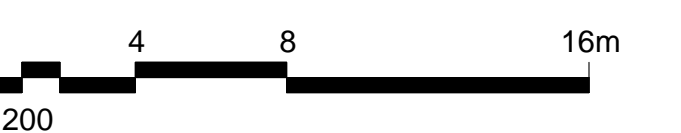
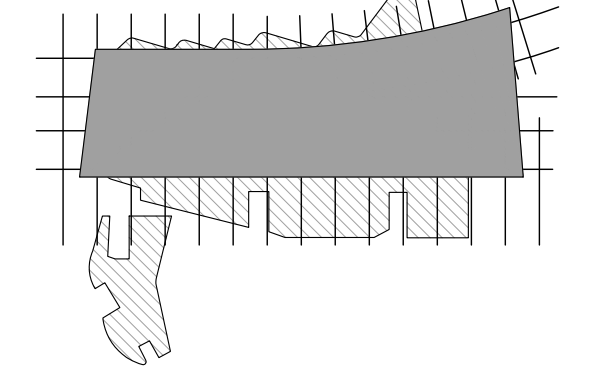
2000mm PROPOSED CLEARANCE BETWEEN RMS STRUCTURE AND FACADE WITHIN 5.5M ABOVE ROADWAY

2000mm PROPOSED CLEARANCE BETWEEN RMS STRUCTURE AND FACADE WITHIN 5.5M ABOVE ROADWAY

2000mm PROPOSED CLEARANCE BELOW RMS STRUCTURE FOR MAINTENANCE AND INSPECTION

2000mm PROPOSED CLEARANCE BELOW RMS STRUCTURE FOR MAINTENANCE AND INSPECTION

REFERENCE MAP



- NOTES
- DO NOT SCALE DRAWINGS. WRITTEN DIMENSIONS GOVERN.
  - ALL DIMENSIONS ARE IN MILLIMETRES UNLESS NOTED OTHERWISE.
  - ALL DIMENSIONS SHALL BE VERIFIED ON SITE BEFORE PROCEEDING WITH THE WORK. HASSELL SHALL BE NOTIFIED IN WRITING OF ANY DISCREPANCIES.
  - THIS DRAWING MUST BE READ IN CONJUNCTION WITH ALL RELEVANT CONTRACTS, SPECIFICATIONS AND DRAWINGS.

© COPYRIGHT OF THIS DRAWING IS VESTED IN HASSELL LTD. 2015 HASSELL LTD.  
THIS DRAWING IS AN UNCONTROLLED COPY, UNLESS NOTED OTHERWISE.

REV	DESCRIPTION	DATE
C	AMENDED DEVELOPMENT APPLICATION	15.12.15
B	AMENDED DEVELOPMENT APPLICATION	23.10.15
A	DEVELOPMENT APPLICATION	20.08.13
-	ISSUED FOR INFORMATION	23.07.13

ARCHITECT  
HASSELL Limited ABN 007 711 435  
LEVEL 2, PIER 6/9,  
23 HICKSON ROAD  
SYDNEY NSW 2000 AUSTRALIA  
SYDNEY@HASSELLSTUDIO.COM  
T +61 2 9101 2000 F +61 2 9101 2100

**HASSELL**

**RUSSELL & GEORGE** **pmdl**

CLIENT  
**Grocon**

PROJECT  
THE RIBBON HOTEL,  
SERVICED APARTMENTS AND RETAIL  
31 WHEAT ROAD, SYDNEY

DRAWING TITLE  
PROPOSED CLEARANCES TO RMS  
ROADWAY STRUCTURES

STATUS  
FOR APPROVAL

SCALE @ B1	DRAWN	CO-ORD	REVIEWED	APPROVED
1:200	RT	JO	JO	CW
PROJECT NUMBER	DRAWING NUMBER	REV		
A004409	ARC-HSL-DD-1073	C		