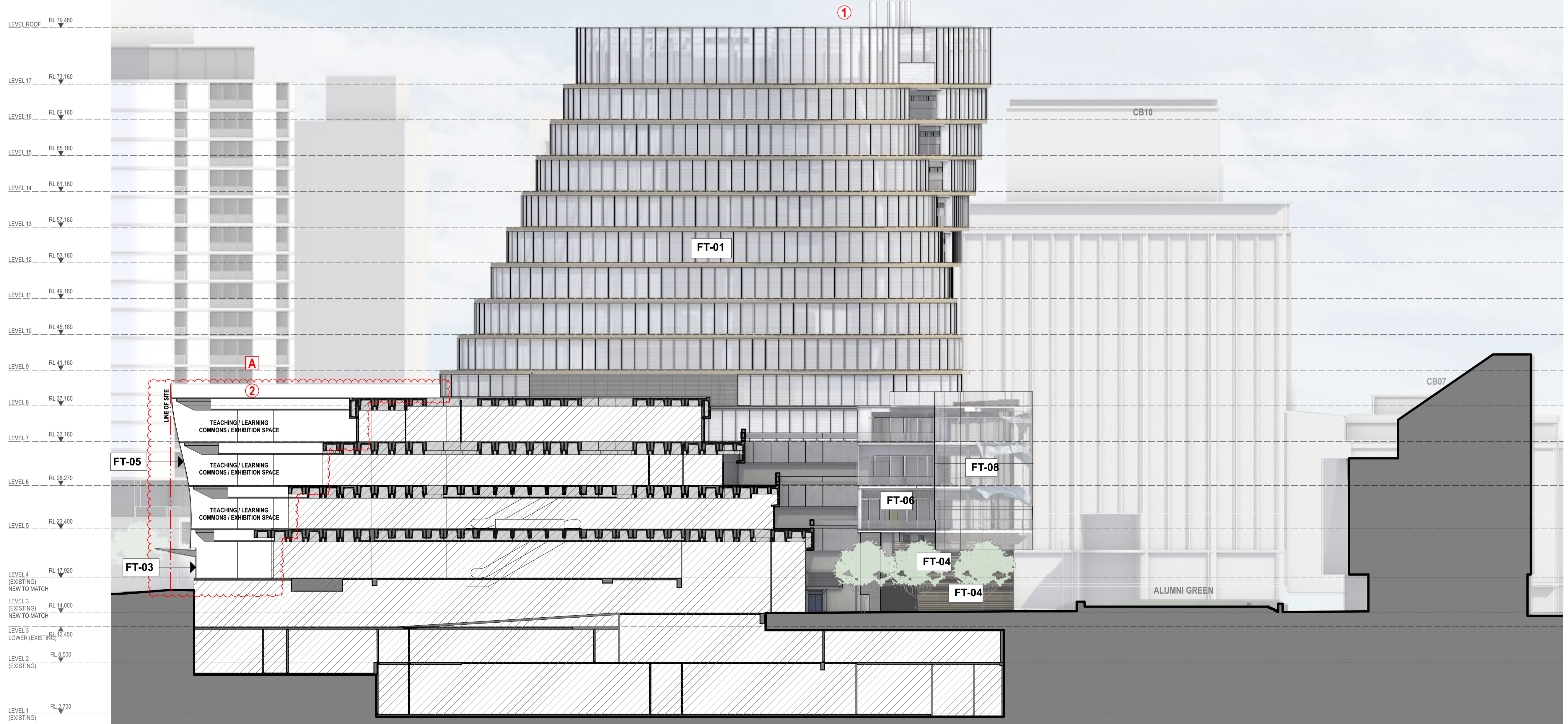


- LEGEND**
- EXTENT OF EXISTING BUILDING
- CHANGES**
- ① SUPERLAB FLUES
  - ② CHANGE TO RL OF TERRACE TO ALIGN WITH PHASE 2 FLOOR SLAB
  - A PHASE 1 ADJUSTMENT
    - ADJUSTMENT TO BROADWAY / JONES STREET FACADE & JONES STREET ENTRY



- FACADE TYPE LEGEND**
- FT01** ALUMINIUM FRAMED CLOSED CAVITY CURTAIN WALL SYSTEM WITH INTEGRATED ALUMINIUM VENETIAN BLINDS.
  - FT02** GLAZED FIN SUPPORTED SINGLE LEAF GLAZING SYSTEM
  - FT03** GLAZED FIN SUPPORTED SHOPFRONT GLAZING SYSTEM
  - FT04** GLAZED FACADE COMPRISING VISION AND SPANDREL STRIPS WITH EXTERNAL BATTENS
  - FT05** GLAZED FACADE COMPRISING VISION AND SPANDREL STRIPS. STEEL FRAMED HORIZONTAL SYSTEM WITH 3 TRANSOMS NOM. PER FLOOR
  - FT06** GLAZED FRAMELESS FACADE
  - FT08** FIXED SINGLE SKIN GLAZING WITH BANKS OF OPERABLE LOUVRES
  - SC01** NATURAL SANDSTONE PANELS ON PROPRIETARY SUB FRAMING OR STUB WALL

REV.	DESCRIPTION	DATE
B	ISSUED FOR DEVELOPMENT APPLICATION S96	01/2017