



# O'CONNELL ST PRIMARY SCHOOL PARRAMATTA

(OLD KINGS SCHOOL SITE)

STATEMENT OF HERITAGE IMPACT  
PROPOSED EXTENSION OF  
EXISTING EXTERNAL LIGHTING  
AND BOLLARDS

---

FOR THE DEPARTMENT OF EDUCATION  
& COMMUNITIES

20 APRIL 2017

**tonkinzulaikhagreer** HERITAGE

## 1.0 INTRODUCTION

### 1.1 BACKGROUND

This Statement of Heritage Impact accompanies the proposal for the extension of the existing scheme of external lighting and new bollards at the Old Kings School site in Parramatta lodged under S57(2) of the *NSW Heritage Act 1977*.

The Old Kings School site is situated between O'Connell Street and Marist Place, Parramatta, overlooking the Parramatta River. The site contains a collection of buildings dating from 1836 to 1971 and includes buildings of exceptional heritage significance. The site also contains some highly significant landscape elements such as a large oval to the south that fronts the Parramatta River. The entire site is listed on the *State Heritage Register (NSW)*.

The Kings School occupied the site from 1836 until 1964 when it was sold to the NSW Department of Health and adaptively re-used to accommodate the Marsden Rehabilitation Centre until 2002. The original Headmaster's Residence (Building A) and the main school building (Building B) were refurbished in 2003.

The adaptive re-use of the buildings on the site of Old Kings School Parramatta as the O'Connell Street Public School has been commissioned by the Department of Education and Communities (DEC) and is due to open later in 2017 and once complete will be the largest public commissioned primary school in NSW.

Address:	3 Marist Place, Parramatta NSW 2150 24A O'Connell Street, Parramatta NSW 2150
Real Property Description:	Parish of Field of Mars, Cumberland County Lot 1, DP 1112822 Lot 6, DP 1182647
Heritage Listings:	The property is listed on the NSW State Heritage Register as both Former King's School Group (SHR 00771) and Marsden Rehabilitation Centre (SHR 00826). The listing for the Marsden Rehabilitation Centre is broken down into several sub-listings (refer appendix).
Authors:	Julie Mackenzie BSc(Arch)BArchMHeritCons Registered Architect NSW Challis Smedley, BArch(Hons)MHeritCons Registered Architect NSW Rebecca Zulaikha BFA(Hons)BLArchCHeritCons Tonkin Zulaikha Greer Architects
Photographer:	Tonkin Zulaikha Greer Architects (unless noted otherwise)
For:	Department of Education and Communities (DEC)

### 1.2 LIMITATIONS

Assessments of cultural significance made by others have been adopted for this report. In the opinion of the author, the recommendations in this report would not be materially altered by any further primary research.

### 1.3 TERMINOLOGY

This Statement of Heritage Impact has generally been prepared in accordance with the Heritage Office and Department of Urban Affairs and Planning publication *Statements of Heritage Impact*, revised in 2002 (published as part of the *NSW Heritage Manual*). In order to achieve a consistency in approach and understanding of the meaning of conservation by all those involved a standardized terminology for conservation processes and related actions should be adopted. The terminology in *The Burra Charter* is a suitable basis for this.

The following terms apply to the historic fabric of the site and are included here to assist in understanding of the intent of the conservation requirements in this section.

- *Place* means site, area, land, landscape, building or other work, group of buildings or other works, and may include components, contents, spaces and views.

- *Cultural significance* means aesthetic, historic, scientific, social or spiritual value for past, present or future generations.
- *Fabric* means all the physical material of the place including components, fixtures, contents, and objects.
- *Conservation* means all the processes of looking after a place so as to retain its cultural significance.
- *Maintenance* means the continuous protective care of the fabric and setting of a place, and is to be distinguished from repair.
- *Repair* involves restoration or reconstruction.
- *Preservation* means maintaining the fabric of a place in its existing state and retarding deterioration.
- *Restoration* means returning the existing fabric of a place to a known earlier state by removing accretions or by reassembling existing components without the introduction of new material.
- *Reconstruction* means returning the place to a known earlier state and is distinguished from restoration by the introduction of new material into the fabric.
- *Adaptation* means modifying a place to suit the existing use or a proposed use.
- *Use* means the functions of a place, as well as the activities and practices that may occur at the place.
- *Compatible use* means a use, which respects the cultural significance of a place. Such a use involves no, or minimal, impact on cultural significance.
- *Setting* means the area around a place, which may include the visual catchment.
- *Related place* means a place that contributes to the cultural significance of another place.
- *Interpretation* means all the ways of presenting the cultural significance of a place.

#### 1.4 THE STUDY AREA

The site of the new primary school is defined in Figure 2 below. The site is bounded by O'Connell Street to the west and Marist Place to the east. The southern boundary of the site fronts the Parramatta River, adjacent to the public riverside walk. The northern boundary is adjacent to St Patrick's cathedral and grounds. The site covers an approximate area of 24,700m.



Figure 1: (above) Aerial Photograph showing subject site.  
Source: Google Maps 2015

1.5 SITE PLAN SHOWING BUILDING IDENTIFICATION

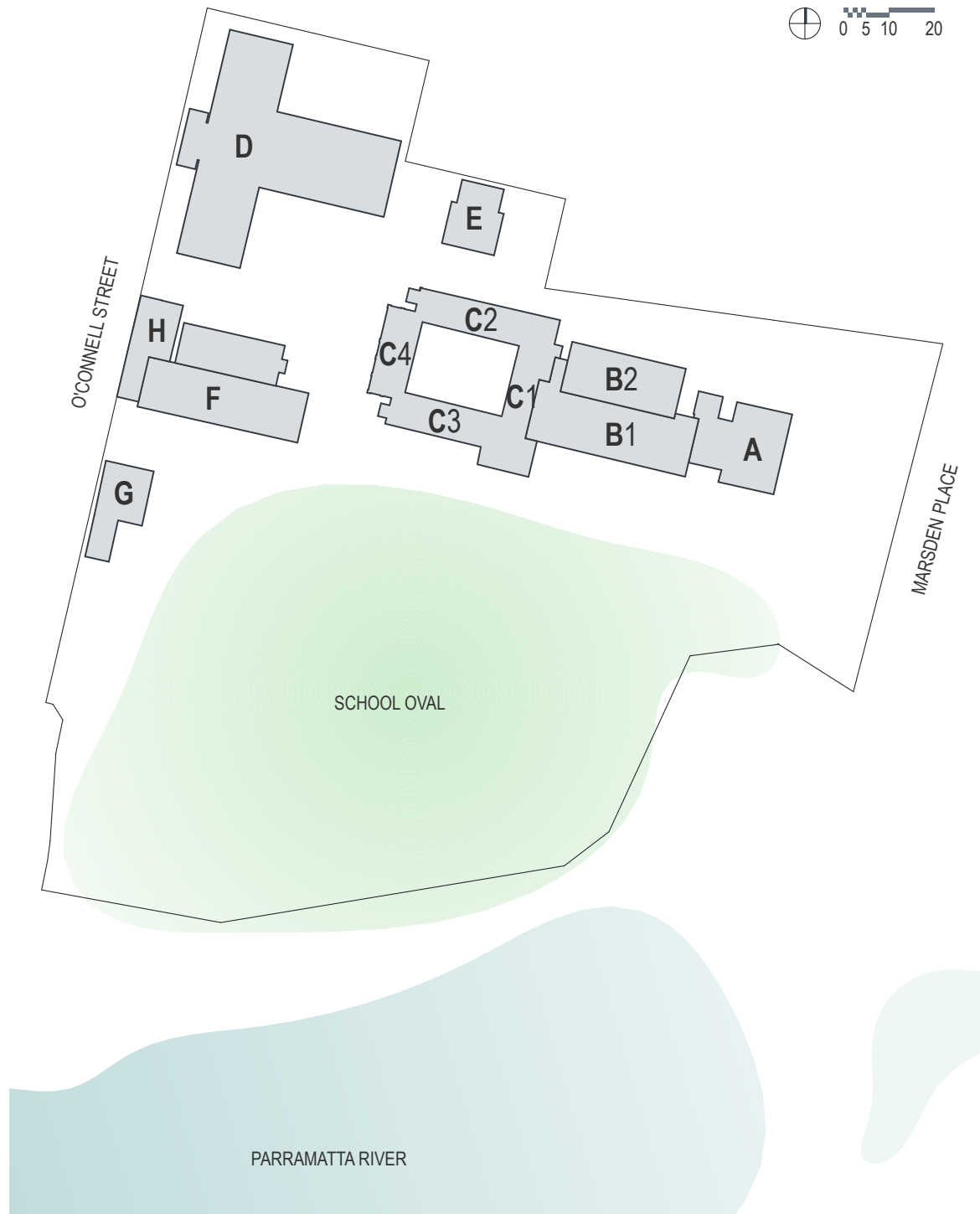


Figure 2: Building identification plan.  
Source: Tonkin Zulaikha Greer Architects, 2015

The buildings have been numbered in accordance with the Master Plan and associated studies prepared by the NSW Government Architects Office in 2014.

## 2.0 STATUTORY CONTEXT

### 2.1 THE HERITAGE ACT 1977

The *NSW Heritage Act 1977* (the *Heritage Act*) provides protection to items of environmental heritage in NSW. Under the *Heritage Act*, 'items of environmental heritage' include places, buildings, works, relics, moveable objects and precincts identified as significant based on historical, scientific, cultural, social, archaeological, architectural, natural or aesthetic values. State significant items are listed on the NSW *State Heritage Register* (SHR) and are given automatic protection under the *Heritage Act* against any activities that may damage an item or affect its heritage significance.

The *Heritage Act* also protects 'relics', which can include archaeological material, features and deposits. Section 4(1) of the *Heritage Act* (as amended 2009) defines 'relic' as follows:

*"relic means any deposit, artefact, object or material evidence that:*  
*(a) relates to the settlement of the area that comprises New South Wales, not being Aboriginal settlement, and*  
*(b) is of state or local heritage significance."*

Under Section 57 of the *Heritage Act*, approval is required for works to an item listed on the SHR. Division 3, Subdivision 1 sets out the method by which approval should be sought and determination made. For works to a SHR item, a Section 60 application must be made for works that are not exempt under Section 57(2) of the *Heritage Act*.

Sections 139-145 of the *Heritage Act* prevent the excavation or disturbance of land known or likely to contain relics, unless in accordance with an excavation permit. Excavation permits are issued under Section 140 of the *Heritage Act*, or Section 60 for sites listed on the *State Heritage Register*. An Archaeological Research Design must support Excavation Permit Applications.

If the proposed works are minor and would have minimal impact on the heritage significance of the place or site, they may be granted an exception or exemption under Section 139 (4) of the *Heritage Act*. The works proposed in this Statement if Heritage Impact qualify for exemption from approval under Section 57(2) of the Act, therefore this *Statement of Heritage Impact* has been prepared to accompany a notification to the NSW Heritage Council under Section 57(2) of the *Heritage Act*.

### 2.2 THE STATE HERITAGE REGISTER

The *State Heritage Register* (SHR) was established under Section 22 of the *Heritage Act* and is a list of places and objects that are considered important to the people of NSW. The SHR is administered by the Heritage Branch of the Office of Environment & Heritage and includes a diverse range of over 1500 items, in both private and public ownership. To be listed, an item must be deemed to be of heritage significance for the whole of NSW.

Sites or relics that are listed on the SHR (or are the subject of an Interim Conservation Order) are provided statutory protection under the *Heritage Act*. A Section 60 application can be determined by the Heritage Council of NSW, or in some cases the Heritage Division under delegation.

The proposal is located within the curtilage of SHR listed 'Kings School Group' (Former) (#00771) and 'Marsden Rehabilitation Centre Group' (#00826) and therefore subject to the provisions of the *Heritage Act*.

### 2.3 SECTION 170 REGISTER

The *Heritage Act* requires all government agencies to identify and manage heritage assets in their ownership and control. Under Section 170 of the *Heritage Act*, government bodies must establish and keep a register which includes all items of environmental heritage listed on the SHR, an environmental planning instrument or which may be subject to an interim heritage order that are owned, occupied or managed by that government body. All government agencies must also ensure that all items entered on its register are maintained with due diligence in accordance with *State Owned Heritage Management Principles* approved by the Minister on advice of the NSW Heritage Council.

These principles serve to protect and conserve the heritage significance of identified sites, items and objects and are based on relevant NSW heritage legislation and statutory guidelines.

The subject site is located within the curtilage of 'King's School Group (Former)' (#2242625), which is listed as an item of State Heritage Significance on this *Register*. Any works carried out within the curtilage of the former King's School site should be recorded and the Section 170 Register listing updated upon completion. As the site is to be re-established as a public school, it is likely that the listing will be transferred from the NSW Department of Health to be updated and maintained by the NSW Department of Education.

## 2.4 ENVIRONMENTAL PLANNING AND ASSESSMENT ACT 1979

The *Environmental Planning and Assessment Act 1979 (EP&A Act)* establishes a framework for cultural heritage values to be formally assessed in the land use planning and development consent process. The *EP&A Act* requires that environmental impacts are considered prior to land development; this includes impacts on cultural heritage items and places as well as archaeological sites and deposits. The *EP&A Act* also requires that Local Governments prepare planning instruments, such as *Local Environmental Plans (LEPs)* and *Development Control Plans (DCPs)*, in accordance with the *Act* to provide guidance on the level of environmental assessment required.

## 2.5 PARRAMATTA CITY CENTRE LOCAL ENVIRONMENTAL PLAN 2007

The current study area falls within the boundaries of the City of Parramatta Council local government area. The site is located within the curtilage of the Marsden Rehabilitation Centre and in close proximity to a number of State Heritage Items listed in *Schedule 5 – Environmental Heritage of Parramatta City Centre LEP 2007*.

Item #	Item	Significance
#52	Marsden Rehabilitation Centre and potential archaeological site	State
#53	Parramatta Regional Park	State
#48	St Patrick's Cathedral, presbytery and precinct and potential archaeological site	State
#49	Parramatta Dam archaeological site weir	State
#22	Alfred Square and potential archaeological site	State
#55	Former St Andrew's Uniting Church, hall and potential archaeological site	State
#31	Parramatta hospital archaeological site (opposite side of the River)	State
#32	Brislington property, Moreton Bay Fig tree and potential archaeological site	State

Table 1: Table of heritage items, including the subject site and those in the vicinity listed in *Parramatta City Centre LEP 2007*.

## 2.6 ENVIRONMENT PROTECTION AND BIODIVERSITY CONSERVATION ACT 1999

The *Environment Protection and Biodiversity Conservation Act 1999 (EPBC Act)* is the Australian Government's key piece of environmental legislation. The EPBC Act enables the Australian Government to join with the states and territories in providing a national scheme of environment and heritage protection and biodiversity conservation. The *EPBC Act* focuses Australian Government interests on the protection of matters of national environmental significance, with the states and territories having responsibility for matters of state and local significance. Under the *EPBC Act 1999*, nationally significant heritage items are protected through their listing on the *Commonwealth Heritage List* or the *National Heritage List*.

Old Government House and the Government Domain (#105957) are listed on the *National Heritage List*. They are located within Parramatta Regional Park across O'Connell Street to the west and south west of the subject site.

## 2.7 NON STATUTORY LISTINGS

Listing on non-statutory registers does not provide any legal protection to heritage items or sites, however demonstrates the recognised heritage value of items.

<sup>1</sup> <http://www.environment.gov.au/topics/about-us/legislation/environment-protection-and-biodiversity-conservation-act-1999/about-epbc>

### 2.7.1 Register of the National Trust

The *Register of the National Trust* was established in 1949 and is maintained by the National Trust of Australia. Following its survey and assessment of the natural and cultural environment, the National Trust of Australia (NSW) maintains a Register of landscapes, townscapes, buildings, industrial sites, cemeteries and other items or places which the Trust determines have cultural significance and are worth of conservation.<sup>2</sup>

Currently, there are some 12,000 items listed on the Trust's *Register*. They are said to be Classified and Marsden Rehabilitation Centre (Former King's School) Group is included on this *Register* as item #S8886.

### 2.7.2 Register of the National Estate

The *Register of the National Estate* is a list of some 13,00 places of natural, Indigenous and historic significance throughout Australia that was originally established under the *Australian Heritage Commission Act 1975*. The *Register of the National Estate* ceased to be a statutory register in 2012 and is now maintained on a non-statutory basis as a publicly available archive and educational resource.<sup>3</sup> Kings School Group (Former) is listed on the *Register of the National Estate* as item #14290.

---

<sup>2</sup> <http://www.nationaltrust.org.au/nsw/heritage-register>

<sup>3</sup> <http://www.environment.gov.au/topics/heritage/heritage-places/register-national-estate>

### 3.0 HISTORICAL CONTEXT

#### 3.1 CHRONOLOGICAL HISTORY

A chronological summary of the history of the former King's School site is contained in the *Marsden Rehabilitation Centre (Former King's School) Parramatta Conservation Plan* prepared by Peddle Thorp Architects in 1994. The *State Heritage Register* listing for the King's School (Former) Group #00771 also contains a summary of the site's historical development.

A summary of the chronological development of the site was prepared by TZG Heritage for inclusion in the *Statement of Heritage Impact* for the SSDA, which received development consent on 21 February 2017.

## 4.0 HERITAGE SIGNIFICANCE

### 4.1 HERITAGE SIGNIFICANCE

The site of the Former Kings School is listed on the *State Heritage Register* and the *S170 Register*. It is listed as the 'Marsden Rehabilitation Centre and Potential Archaeological Site' in the *Parramatta City Centre LEP 2007*. Full heritage listings are contained in the Appendices at the rear of this report.

### 4.2 ASSESSMENT OF HERITAGE VALUE

The former King's School site has very high heritage significance that applies to both the existing buildings and to the site generally, including its archaeology and landscape setting. Within this overarching grading of significance, each component of the site has been individually graded as having 'very high', 'high', 'moderate' or 'little' significance, as well as items identified as being intrusive to the general significance of the site, (as per the *Marsden Rehabilitation Centre Conservation Plan* prepared by Peddle Thorp Architects in 1994).

The *King's School Group (former)* is listed as having significance to the state of NSW under the *NSW Heritage Act* in the *State Heritage Register (#00771)* as follows:

*"The area was originally occupied by the Dharug people. The historical development of the site spans almost 200 years, from early agricultural activities in this area, followed by occupation of the site by the Agricultural and Horticultural Society (Australia's first)(Charles, 1986)) for the purposes of forming a nursery garden and introducing fruit tree species into the colony. The history of the site is dominated by the development of the King's School, one of the major educational institutions in NSW throughout much of the 19th and 20th centuries (operating from this site from 1836 to the 1960s).*

*The King's School, run by the Anglican Church, was the first large public boarding school (secondary) to be established in the colony of NSW, and developed to become one of Australia's notable private schools. The school was one of the large institutions which shaped both the urban form and cultural framework of the regional town of Parramatta in the early 19th century, and counts a number of notable Australians among its former students.*

*The potential archaeological resource at this site is very complex, with various phases of construction, expansion and demolition across the site, most of which occurred during the King's School phase. The King's School represented the dominant phase of development across the site and, subsequently, physical remains associated with this phase of development also dominate the potential archaeological resource at the site. The potential archaeological resource at the site may provide a tangible link to each phase of the historical development of the site. Investigation, analysis and interpretation of the potential archaeological remains across the site may provide information about the nature of the development and occupation of the site throughout the various phases of its history. Many of these remains would have potential to contribute substantial information to our understanding of the development and occupation of the site that could not be obtained from other sources, such as historical documentation. Owing to the continuous operation of the King's School on this site for 128 years, investigation of the remains of this occupation may provide a rare opportunity to investigate the development and changing operation of a major institution, allowing investigation of changes in material culture within the one context over time, including construction techniques, infrastructure technology, domestic and personal items of the inhabitants (students and staff), as well as developments or modifications in educational practices over time.*

*Archaeological evidence associated with the earliest phases of European occupation of this site (early agricultural activities of the Agricultural and Horticultural Society's occupation of the site) would be of high State significance for its ability to provide information about a poorly documented and understood phase of Parramatta and NSW's history. However, such evidence would be fragmentary at best, if it survives at all.*

*Archaeological evidence associated with the development and occupation of the King's School would also be of high State significance for its ability to provide information about a major institutional site over an extended period of time. Archaeological remains associated with the King's School would contribute to the historical significance of the site, providing a tangible link to this significant phase of the site's history, as well as information about the occupation and operation of the institution that could not be obtained from other sources.*

*Archaeological evidence associated with the development and occupation of the Marsden Rehabilitation Centre would be limited and would have little potential to provide information about the operation of this institution that could not be obtained from other sources. Archaeological remains associated with this phase of the site's history would have little or no significance. (Godden Mackay Logan, 2004)*

*The site of the former King's School Parramatta is very important in the history of education in the state. The King's School occupied the site almost continuously from 1836 to 1964. It was the first large private boarding school run by the Anglican Church to provide secondary education, which was established in the colony of New South Wales. The school developed during its tenure on the site into one of Australia's notable schools and thus gave community status to Parramatta as a regional town/city in New South Wales. The growth of the school is evident in the relatively intact exterior fabric of the buildings.*

*Many buildings were the work of prominent Australian architects: Ambrose Hallen (Colonial Architect 1832-1835), Cyril Blacket and Power Adams & Munnings, the successors of the earlier firm of (John) Sulman and Power. The stonework of the original 1830s school building and its eastern wing is evidence of the relatively high level skills of the Scottish artisans who were brought to Australia following the depression in the British construction industry in the 1820s.*

*The foreshore lands of the Marsden Rehabilitation Centre site are of significance at national, state and local levels, as:*

- part of the territory of the Burramuttagal people;*
- part of the former Government Farms at Parramatta;*
- associated with the development of the horticultural industry and botanical exploration;*
- associated with important people and events in the development and settlement of Parramatta such as George Caley, Robert Brown and Francois Peron;*
- associated with the development of the setting for the King's School;*
- associated with the open space created by the natural flood zone along the Parramatta River*  
*(Zenscapes, 2005, p.26)*

*The major landscape significance of the site is the spatial relationship between the wall of the buildings and the river. The gracious setback of the buildings demonstrates the principle of picturesque siting, giving the building group a 'prospect'. This layout of the site greatly contributes to the understanding of the early development of Parramatta as an important centre in the Colony and the attitudes to particular landscape settings (Mathew & Associates, Landscape Report, in Peddle Thorp, 1994)*

*The site is one of two surviving examples along the Parramatta River of the picturesque siting principles of the 18th and 19th centuries by which large building groups were sited on the brow of a hill overlooking sloping land bordering a river. The site is evidence of the role of major social institutions in the evolution of the physical and cultural framework of the regional town of Parramatta during the nineteenth century. The site was under cultivation early in the colony's history and was used in the 1820s for the acclimatisation and development of exotic fruit trees when Australia's first Agricultural Society was formed in Parramatta (1822) and was given this land by its president, Governor Brisbane as an experimental garden to grow new varieties of plants and trees. (Peddle Thorp 1994:81) A number of trees over 100 years old remain from the School gardens, some rare in Sydney, such as the carob bean tree, *Ceratonia siliqua*. (A Brief History of Parramatta Park - Historic Parramatta Series, 1986: 9, Read, S. (pers.comm.))*

The Marsden Rehabilitation Centre Group is also listed as having significance to the state of NSW under the NSW *Heritage Act* in the *State Heritage Register* (#00826) with the same Statement of Significance as the above listing. Under this listing number, other specific listings cover particular aspects of the site in detail as follows:

Item name	SHR Listing Number	Statement of Significance
Marsden Rehabilitation Centre- Archaeological Sites	00826	<p><i>Of historical and archaeological significance as evidence of earlier occupation of the site since 1790. (of Marsden Street weir, bounding the site to the south).</i></p> <p><i>Scientific</i>  <i>The weir is of local significance for its high potential for archaeological remains to occur beside the weir and along the northern river bank (part of the Marsden Rehabilitation Centre site (former King's School grounds/oval);</i></p> <p><i>Subsurface evidence may exist at this site which may contribute to our understanding of weir construction, refuse disposal, and European settlement and development in Parramatta (Stedinger &amp; Associates, 2003)</i></p>
Marsden Rehabilitation Centre – Central Block	00826	<p><i>The site of the former King's School Parramatta is very important in the history of education in the State. The King's School occupied the site almost continuously from 1836 to 1964. It was the first large public boarding school run by the Anglican Church to provide secondary education, which was established in the colony of New South Wales.</i></p> <p><i>The school developed during its tenure on the site into one of Australia's notable schools and thus gave community status to Parramatta as a regional town/city in New South Wales. The growth of the school is evident in the relatively intact exterior fabric of the buildings. The design of many buildings was by architects important to the architectural history of NSW: Ambrose Hallen (Colonial Architect 1832-1835), Cyril Blacket and Power Adams &amp; Munnings, the successors of the earlier firm of (John) Sulman and Power. The stonework of the original 1830s school building and its eastern wing is evidence of the relatively high level skills of the Scottish artisans who were brought to Australia following the depression in the British construction industry in the 1820s.</i></p> <p><i>The site is one of two surviving examples along the Parramatta River of the picturesque siting principles of the 18th and 19th centuries by which large building groups were sited on the brow of a hill overlooking sloping land bordering a river. The site is evidence of the role of major social institutions in the evolution of the physical and cultural framework of the regional town of Parramatta during the nineteenth century. The site was under cultivation early in the colony's history and was used in the 1820s for the development of exotic fruit trees. (Peddle Thorp 1994:81)</i></p> <p><i>(Note: The above 'Statement of Significance' is taken from the Marsden Rehabilitation Centre (Former Kings School) Parramatta: Conservation Plan (1994), prepared by Peddle Thorp Architects for the NSW Health Department).</i></p>
Marsden Rehabilitation Centre – Dining Hall	00826	<p><i>Of high architectural and historical significance as part of the King's School, one of the oldest schools in Australia. Forms part of the significant group of hospital buildings.</i></p>
Marsden Rehabilitation Centre – Kitchen and Servant's Quarters	00826	<p><i>Of architectural and historical significance as part of the Kings School, one of Australia's oldest schools. Forms part of the significant group of hospital buildings.</i></p>
Marsden Rehabilitation Centre - Landscape	00826	<p><i>Of environmental significance to the setting of the Marsden Rehabilitation Centre. The site is one of two surviving examples along the Parramatta River of the picturesque siting principles of the 18th and 19th centuries by which large building groups were sited on the brow of a hill overlooking sloping land bordering a river. The site is evidence of the role of major social institutions in the evolution of the physical and cultural framework of the regional town of</i></p>

Item name	SHR Listing Number	Statement of Significance
		<p><i>Parramatta during the nineteenth century. The site was under cultivation early in the colony's history and was used in the 1820s for the acclimatisation and development of exotic fruit trees when Australia's first Agricultural Society was formed in Parramatta (1822) and was given this land by its president, Governor Brisbane as an experimental garden to grow new varieties of plants and trees. (Peddle Thorp 1994:81)</i></p> <p><i>Sporting activities were also considerably developed largely due to the enthusiasm of WR Burkitt. Rugby was introduced in 1870, the first tennis courts were constructed and the playing field in Parramatta Park was levelled, all with the assistance of boys from the school. There is little evidence of any significant attempt at landscape design in the grounds. The dominant landscape feature was the school itself in its setting. (Peddle Thorp 1995:40)</i></p>
Marsden Rehabilitation Centre – Two Dormitory Blocks	00826	Of high architectural and historical significance as part of the King's School: one of the oldest in Australia. Forms part of the significant group of hospital buildings.

The site and other specific items are also listed as items of heritage significance on Parramatta City Council's *Parramatta Regional Environment Plan 1999*, as well as by other State and Local agencies. Please refer to the Statement of Heritage Impact prepared to accompany the SSDA for all listing details.

**4.3 LEVELS OF SIGNIFICANCE**

The following graphic representation of Levels of Significance is adapted from the *Marsden Rehabilitation Centre (Former Kings School) Parramatta: Conservation Plan (1994)*, prepared by Peddle Thorp Architects for the NSW Health Department. The buildings are numbered based on the 2014 Master Pan prepared by the NSW Government Architects Office.

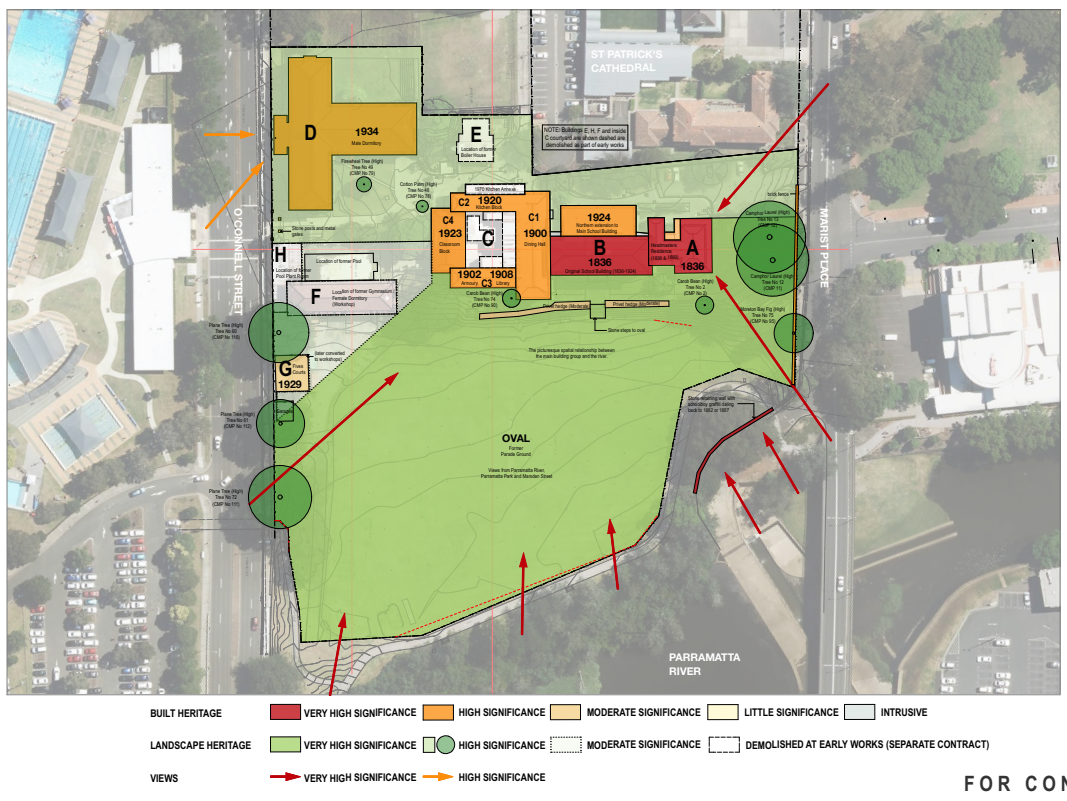


Figure 3: Levels of Significance Diagram

Source: TZG Architects, adapted from Marsden Rehabilitation Centre CMP, Peddle Thorp Architects, 1994.



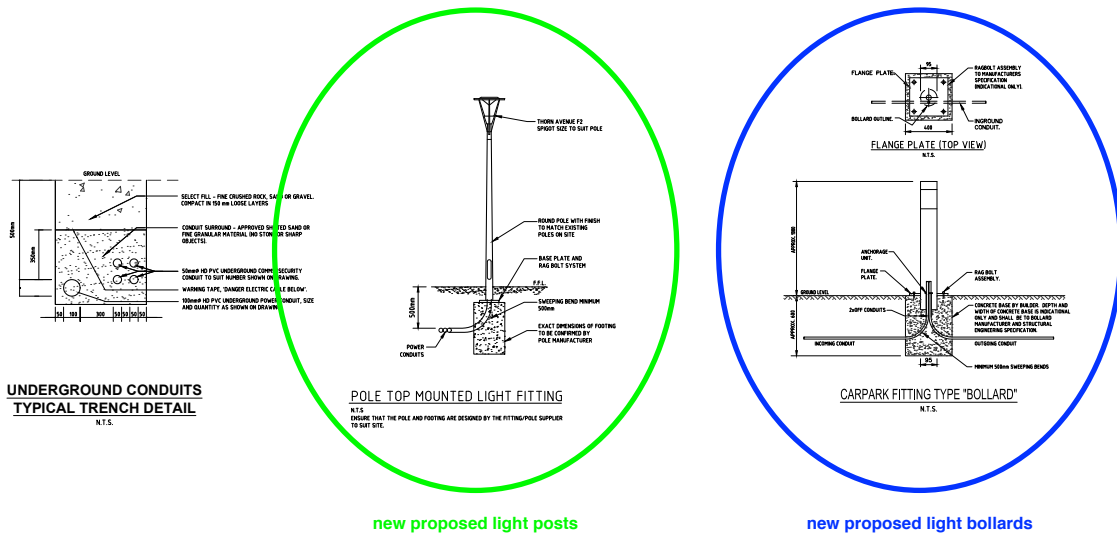


Figure 5: Details of the proposed light posts and bollards.  
Source: TZG, 2017



Figure 6: Photograph showing the existing light posts to the south of Buildings A and B.  
Source: TZG, 2017

## 6.0 ASSESSMENT OF HERITAGE IMPACT

### 6.1 GENERAL

The proposed extension of the existing external lighting scheme and introduction of new lighting bollards is intended to involve minimal impact on the heritage significance of the site. The lighting is required for safety reasons. It has been designed to minimise impacts on significant views to and from the site. Such impacts will be negligible.

### 6.2 ARCHAEOLOGICAL MANAGEMENT

The proposal will involve limited disturbance of the site, in order that an electrical supply line can be laid to service the bollards and lights, as per the above plan.

The 'unexpected finds procedure' will be adhered to with respect to archaeology, as outlined in the *Archaeological Management Plan* prepared by Extent Heritage Advisors to accompany the SSDA (November 2016, Approved 2017).

### 6.3 HERITAGE IMPACT ASSESSMENT AGAINST CONSERVATION POLICIES

The following policies have been extracted from the *Marsden Rehabilitation Centre (former King's School) Conservation Plan* (1994), and the *Conservation Plan Policy Addendum* to the above Plan prepared by Godden Mackay Logan in 2005. They relate specifically to proposed extension of the existing scheme of bollards and lighting.

Policy No.	Policy	Comment
<i>Development Character</i>		
<i>Policy 3.4.1</i>	<p><i>The design of any new development should be harmonious with the existing significant fabric of the place and its surroundings, in terms of criteria or qualities of relatedness such as:</i></p> <ul style="list-style-type: none"> <li>• <i>height</i></li> <li>• <i>proportions</i></li> <li>• <i>rhythm and solids to voids/projections</i></li> <li>• <i>materials</i></li> <li>• <i>textures</i></li> <li>• <i>colour</i></li> <li>• <i>articulation by architectural details</i></li> <li>• <i>forms</i></li> </ul>	The proposed bollards and lighting are an extension of the existing scheme that extends along the southern side of Buildings A and B. The development character is maintained.
<i>Significant Views</i>		
<i>Policy 3.5.1</i>	<p><i>Significant views over the site, which were identified in the 1997 Parramatta Regional Environmental Plan (REP), include the following:</i></p> <ul style="list-style-type: none"> <li>• <i>views along Parramatta River to the east and west, in particular the view of the historic school buildings fronting the oval (View No. 38);</i></li> <li>• <i>views to the north and south along O'Connell Street, with glimpses of the cathedral spire possible between existing built and landscape elements, and views of the former classroom block possible from the stone entrance gates (View No. 48);</i></li> <li>• <i>distant views from The Crescent, Parramatta Park (View No. 35); and</i></li> </ul>	Impacts on views to and from the site are negligible as a result of the proposal.

The following policies have been extracted from the *Marden Rehabilitation Centre (Former Kings School) Conservation Plan (1994) by Peddle Thorp Architects*. These policies were not amended as part of the Addendum above, and remain relevant for the subject site:

#### 7.3.16 Lighting

<i>Policy 16.1</i>	<p><i>New light fittings should:</i></p> <ul style="list-style-type: none"> <li>• <i>be of the design and light quality appropriate to the architectural character of the rooms and functions, or buildings and settings, in the case of external lights</i></li> <li>• <i>have a minimum visual impact on the architectural or landscape character</i></li> </ul>	The proposed extension of the existing lighting and bollard scheme will have a minimal impact on the significant buildings and their settings. They will have a minimal visual impact on the architectural and landscape character. The continuation of the existing lighting and bollard scheme is visually appropriate to the site.
--------------------	--	---

#### 7.3.18 Setting

<i>Policy 18.1</i>	<i>Maintain the vital spatial relationship between the building group and the river, uninterrupted by other development.</i>	The proposed extension of the existing lighting and bollard scheme will have a minimal impact on significant views to and from the site.
<i>Policy 18.3</i>	<i>Maintain views to the site from O'Connell and Marsden Streets to the main building group and the dormitory block from both northern and southern directions, uninterrupted by other development.</i>	The proposed extension of the existing lighting and bollard scheme will have a minimal impact on significant views to and from the site.

## New Landscape Elements

<i>Policy 18.7</i>	<i>The design of the new and soft landscape elements (tennis courts, terraces, pathways, fences, etc) should harmonise with the buildings and setting in ways which retain and enhance the aesthetic significance of the place.</i>	The existing scheme harmonises with the buildings and setting. The extension of this scheme will retain and enhance the aesthetic significance of the place.
--------------------	---	--

## **7.0 CONCLUSION**

The proposed extension of the existing external lighting scheme and introduction of new lighting bollards is intended to involve minimal impact on the heritage significance of the site.

The lighting is required for safety reasons to serve the new Primary School.

The proposed extension to the lighting and bollard scheme is located in areas of lesser significance. It has been designed to minimise impacts on significant views to and from the site.

The proposal will involve limited disturbance of the site, in order that an electrical supply line can be laid to service the bollards and lights. Much of this part of the site has already been disturbed.

## 8.0 REFERENCES

Archaeological & Heritage Management Solutions, *Old King's School, Parramatta: Preliminary Sampling Strategy Statement of Heritage Impact*, 2015.

Australian Heritage Database

Australia ICOMOS, *The Burra Charter: The Australia ICOMOS Charter for Places of Cultural Significance, 2013*. <http://australia.icomos.org/wp-content/uploads/The-Burra-Charter-2013-Adopted-31.10.2013.pdf>

City of Parramatta website.

Conybeare Morrison International P/L, *Subdivision of the Foreshore Area: Marsden Rehabilitation Centre, Parramatta; Heritage Impact Statement*, 2005.

Extent Heritage Advisors, Nov 2016, *O'Connell Street Public School (formerly Old Kings School, Parramatta Archaeological Management Plan*.

Godden Mackay Logan, *Former King's School / Marsden Rehabilitation Centre Conservation Plan Policy Addendum*, 2004 (Addendum to the 1994 Conservation Plan).

Godden Mackay Logan, *Marsden Rehabilitation Centre Site, Parramatta – Archaeological Assessment*, 2004.

Godden Mackay Logan, *Old Kings School, Parramatta Demolition and Remediation Works, Heritage Impact Statement*, 2013.

Peddle Thorp Architects, *Marsden Rehabilitation Centre (Former King's School) Parramatta Conservation Plan*, 1994.

Heritage Office and Department of Urban Affairs and Planning, 'Statements of Heritage Impact', from the *NSW Heritage Manual*.

State Property, NSW Department of Commerce, *Former King's School/Marsden Rehabilitation Centre Conservation Plan Policy Addendum* (Addendum to the 1994 Conservation Plan).