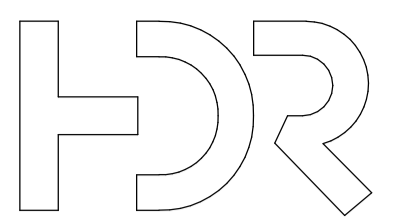


>> CONCEPT DESIGN PLANS

06

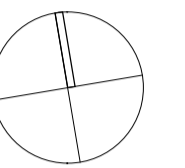


Level 24, 25 Martin Place, Sydney NSW, 2000, Australia
 +61 2 9556 2666 | hdrinc.com
 HDR Pty. Limited ABN 76 158 075 220 trading as HDR

NOMINATED ARCHITECTS:
 NSW Cate Cowlishaw 10786, D. Joe Mihajevic 8699, Mark Gazy 7289,
 Simon Fleet 6363
 VIC Cate Cowlishaw 15211
 ACT Cate Cowlishaw 2767
 TAS Cate Cowlishaw 1479
 QLD Cate Cowlishaw 6139

THIS DOCUMENT IS THE COPYRIGHT OF HDR.
 ALL INFORMATION ILLUSTRATED ON THIS DOCUMENT IS TO BE
 CHECKED AND VERIFIED ON SITE. IN THE EVENT OF DISCREPANCIES
 REFER TO ARCHITECT PRIOR TO COMMENCEMENT OF THE WORK. DO
 NOT SCALE DRAWINGS MANUALLY OR ELECTRONICALLY.

NORTH POINT



KEY PLAN

REV	DESCRIPTION OF CHANGE	DATE	CHECKED	ISSUED
A	CONCEPT DESIGN ISSUE	21/06/24	HDR	HDR
B	FOR INFORMATION ONLY	01/07/24	HDR	HDR

NOTE:

SITE LEVELS, BUILDING RLS AND HEIGHTS, BUILDING
 ALIGNMENTS AND EDGES, EXTERNAL FEATURES AND
 INGROUND SERVICES TO BE FURTHER REVIEWED AND
 DESIGN TESTED DURING SCHEMATIC FOLLOWING ISSUE
 OF UPDATED SURVEY.

--- SSSA PROJECT BOUNDARY

MICHAEL BIRT LAWN

CONFIRMATION OF EXTERNAL LEVELS PENDING NEW
 SURVEY. INTERFACE OF ENTRY TO NEW BUILDING TO BE
 DEVELOPED IN SCHEMATIC.

CONNECTIONS TO D26 TO REMAIN ON
 EACH FLOOR AS PER THE EXISTING
 CONFIGURATION

EXTENT OF SLAB AND
 BUILDING EDGE TO BE
 CONFIRMED

EXTENT OF EXISTING LIFT CORE AND
 SERVICES TO BE CONFIRMED. NEW GOODS
 LIFT TO BE ADJUSTED ACCORDINGLY.

BUILDING D26

EXISTING
 BUILDING E25

BUILDING E26

BUILDING F25

CHANCELLERY WALK

BOTANY STREET

INDICATIVE OUTLINE OF
 PROPOSED EXTENSION

SSDA PROJECT BOUNDARY - APPROX. 2295m²
 PROJECT AREA

LIBRARY WALK

STAGING OF STORMWATER TO BE
 DEVELOPED AS EXISTING PIPES ARE
 PARALLEL TO EDGE OF EXISTING
 BUILDING. REFER TO CIVIL.

PROJECT AREA EXTENTS TO BE CONFIRMED.
 REMOVAL OF LINK TO SAMUELS BUILDING (F25)
 PENDING REVIEW AND CONFIRMATION BY UNSW IN
 SCHEMATIC DESIGN

1 EXISTING SITE
 1 : 200

EXISTING SITE INFORMATION LIMITED. A NEW POINT CLOUD AND 2D SURVEY TO BE PROVIDED
 DURING SCHEMATIC PHASE. DETAILS MAY DIFFER TO WHAT IS CURRENTLY SHOWN

CLIENT



PROJECT

UNSW E25 BIOLINK
 Biological Sciences Building South
 Library Rd, Kensington NSW 2052

DRAWING TITLE

EXISTING SITE PLAN

SCALE
 1 : 200 @ A1
 DRAWING NUMBER

PROJECT NUMBER
 10391717
 ISSUE

E25-HDR-AR-11001 B

PROJECT STATUS
FEASIBILITY CONCEPT

1/07/2024 2:20:02 PM

Andrew Doozy/1391717 - JACQUES/UNSW - SHAW - redevelopments@unsw.edu.au - HDR-AR-11001 - BLD-11

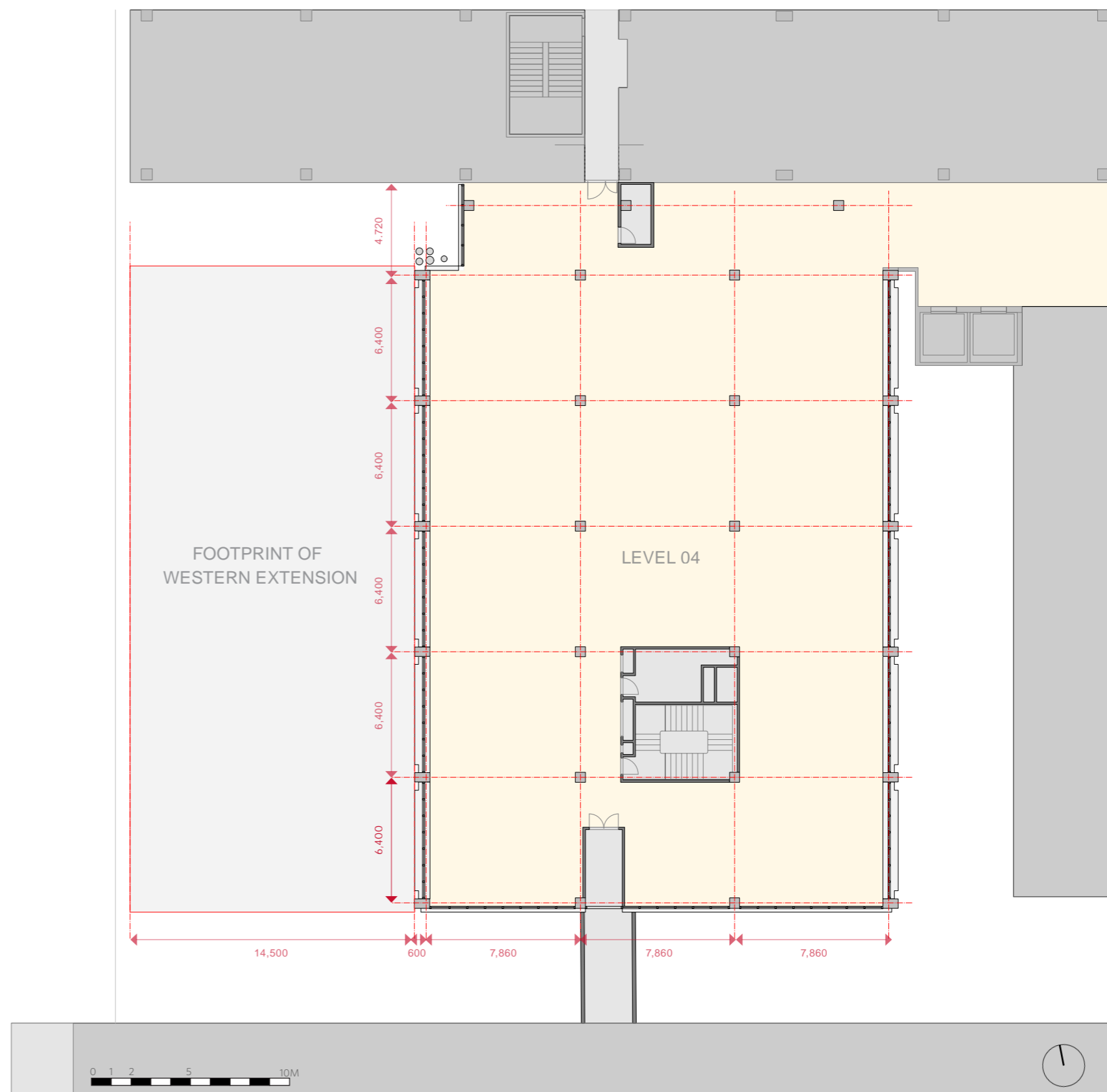
06_CONCEPT DESIGN PLANS

6.1 TYPICAL EXISTING FLOORPLATE (LEVEL 04)

Notes

Existing level 04 plan. Included for reference.

Existing columns, services and egress points all place encumbrances on the space planning that the proposed scheme looks to respond to in an efficient, clear and structured way.



06_CONCEPT DESIGN PLANS

6.2 PROPOSED GROUND FLOOR

Notes

Provides a clear new building entrance and identity

Is visually connected to Chancellery Walk

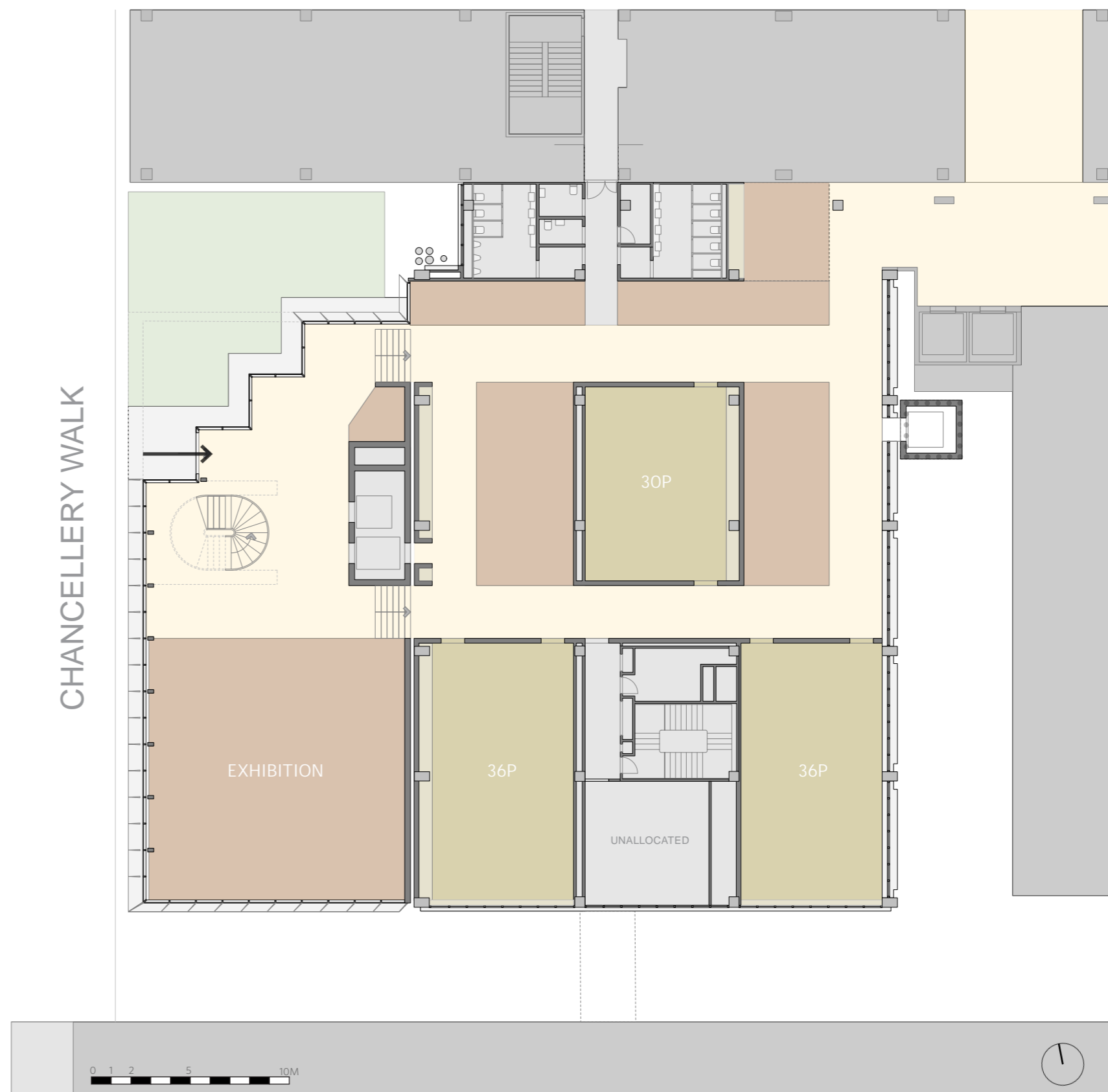
Provides legible connection through to D26 / E26

Mitigates the change in level (1260mm) between Chancellery Walk and the existing E25 ground floor level

Provides a mix of teaching and learning spaces, as well as exhibition space fronting Chancellery Walk

KEY

- TEACHING SPACES
- INFORMAL LEARNING
- CIRCULATION SPACES
- SERVICES / EGRESS / AMENITIES
- LANDSCAPED AREAS



06_CONCEPT DESIGN PLANS

6.3 PROPOSED LEVEL 01

Notes

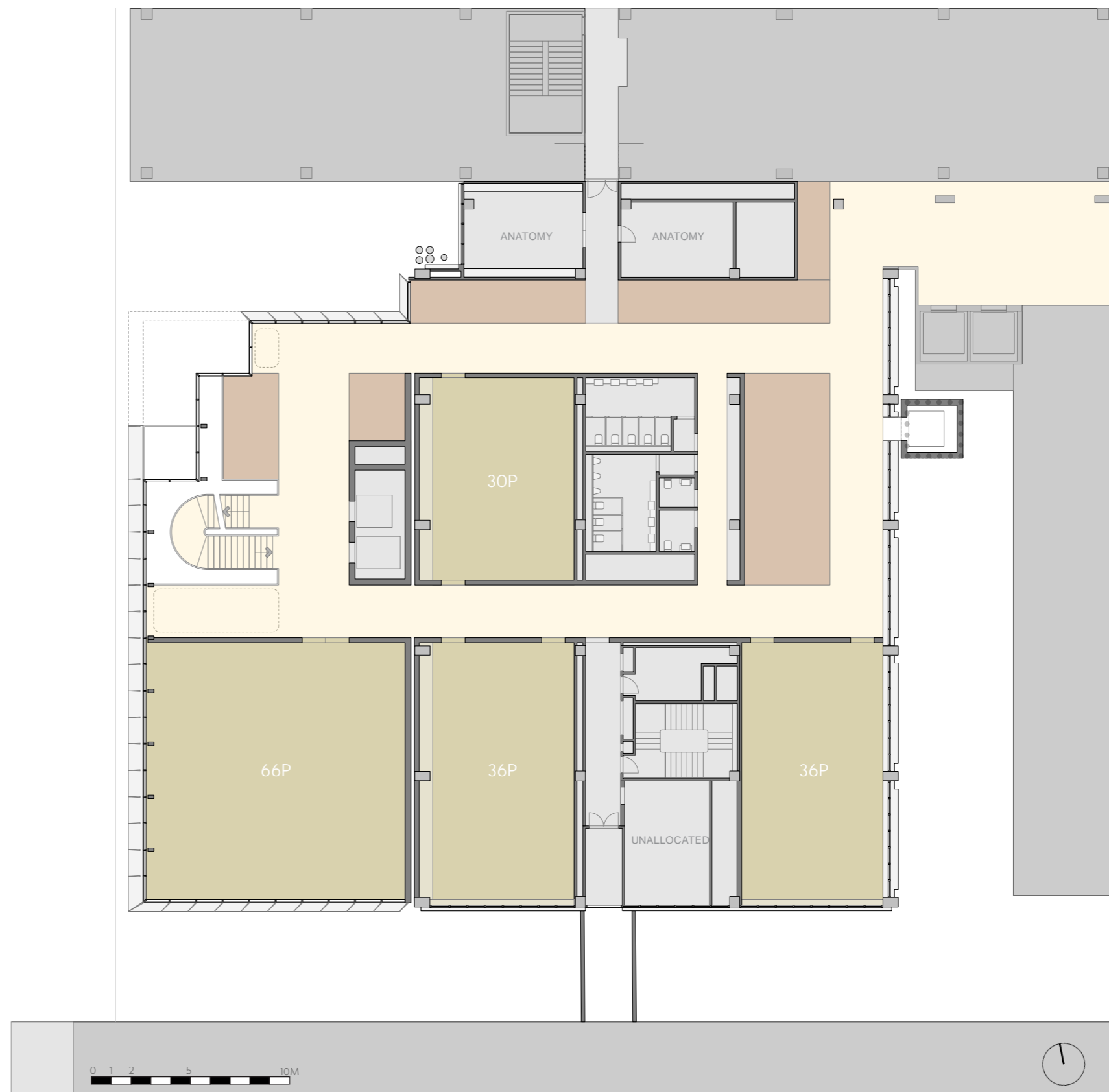
A primarily teaching focused floor with a number of small informal learning spaces around the periphery.

Existing anatomy facilities against D26 to be retained

Existing link connection to F25 likely to be removed, but subject to confirmation during schematic design

KEY

- TEACHING SPACES
- INFORMAL LEARNING
- CIRCULATION SPACES
- SERVICES / EGRESS / AMENITIES
- TERRACE / LANDSCAPED AREAS



06_CONCEPT DESIGN PLANS

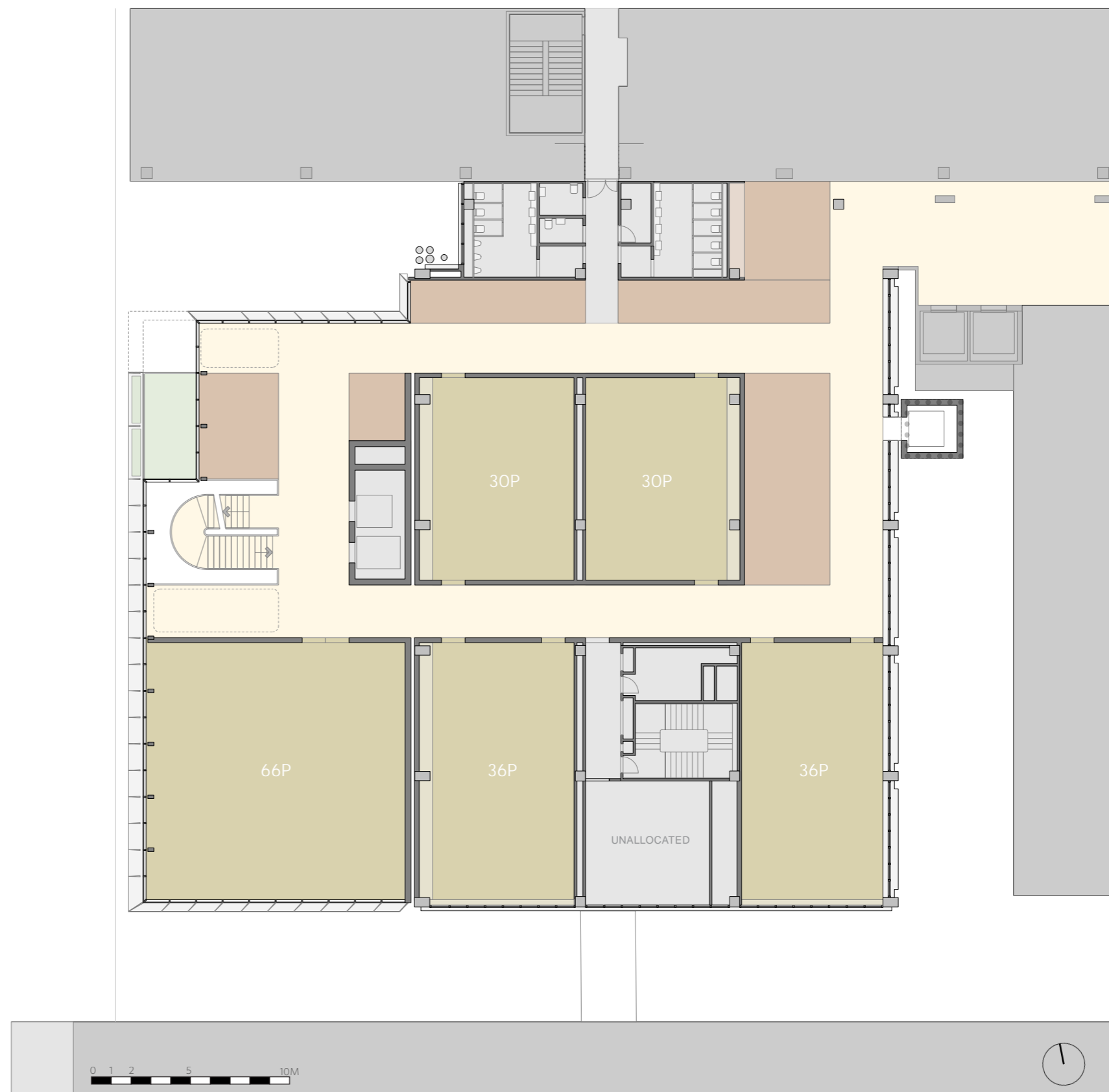
6.4 PROPOSED LEVEL 02

Notes

A primarily teaching focused floor with a number of small informal learning spaces around the periphery.

KEY

- TEACHING SPACES
- INFORMAL LEARNING
- CIRCULATION SPACES
- SERVICES / EGRESS / AMENITIES
- TERRACE / LANDSCAPED AREAS



06_CONCEPT DESIGN PLANS

6.5 PROPOSED LEVEL 03

Notes

The following floor is a cold shell intended to be fitted out in the future as teaching spaces or science related facilities.

KEY

- TEACHING SPACES
- INFORMAL LEARNING
- CIRCULATION SPACES
- SERVICES / EGRESS / AMENITIES
- TERRACE / LANDSCAPED AREAS
- COLD SHELL SPACES

 GOODS LIFT



06_CONCEPT DESIGN PLANS

6.6 PROPOSED LEVEL 04

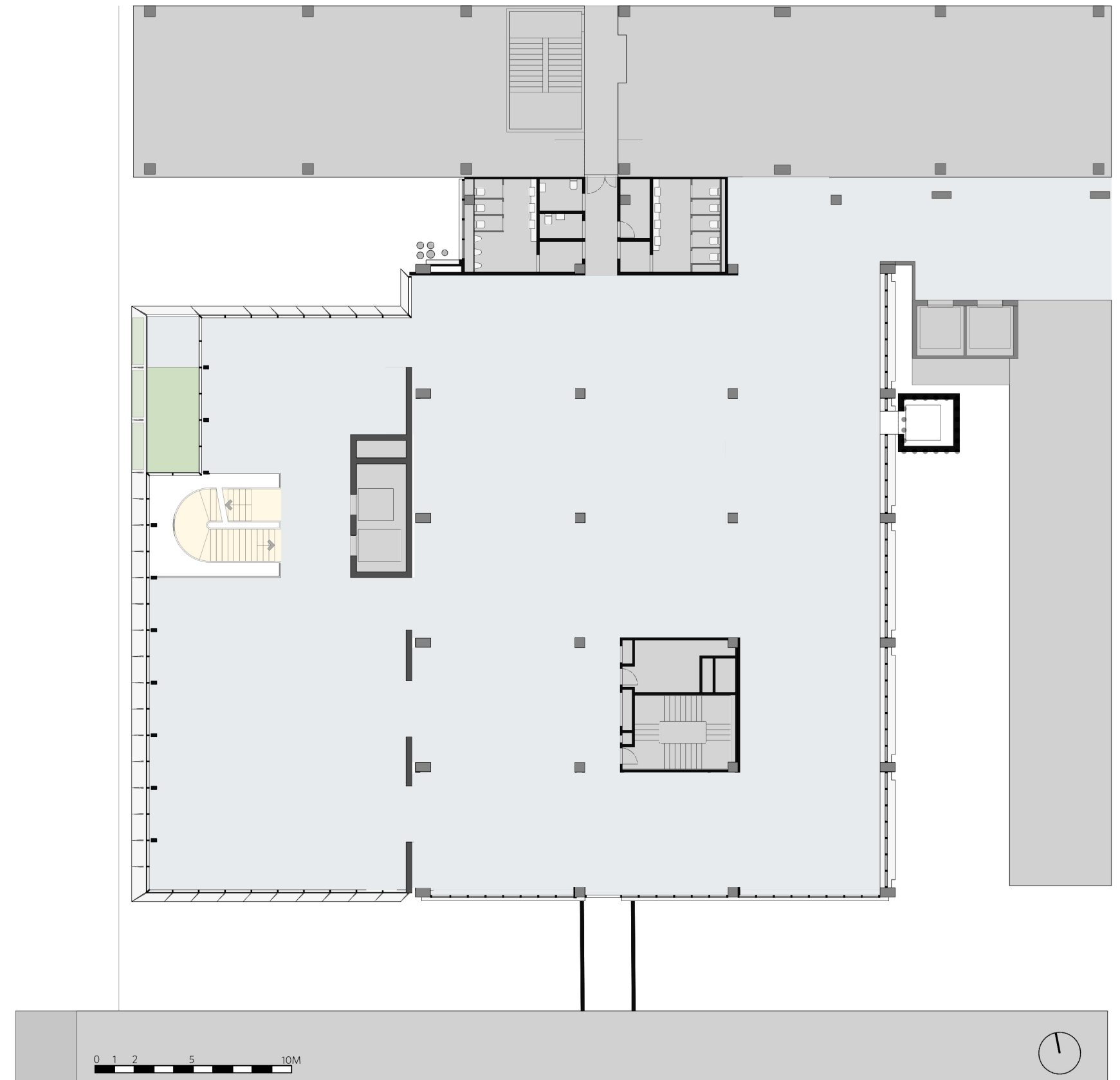
Notes

The following floor is a cold shell intended to be fitted out in the future as teaching spaces or science related facilities.

KEY

- TEACHING SPACES
- INFORMAL LEARNING
- CIRCULATION SPACES
- SERVICES / EGRESS / AMENITIES
- TERRACE / LANDSCAPED AREAS
- COLD SHELL SPACES

 GOODS LIFT



06_CONCEPT DESIGN PLANS

6.7 PROPOSED LEVEL 05

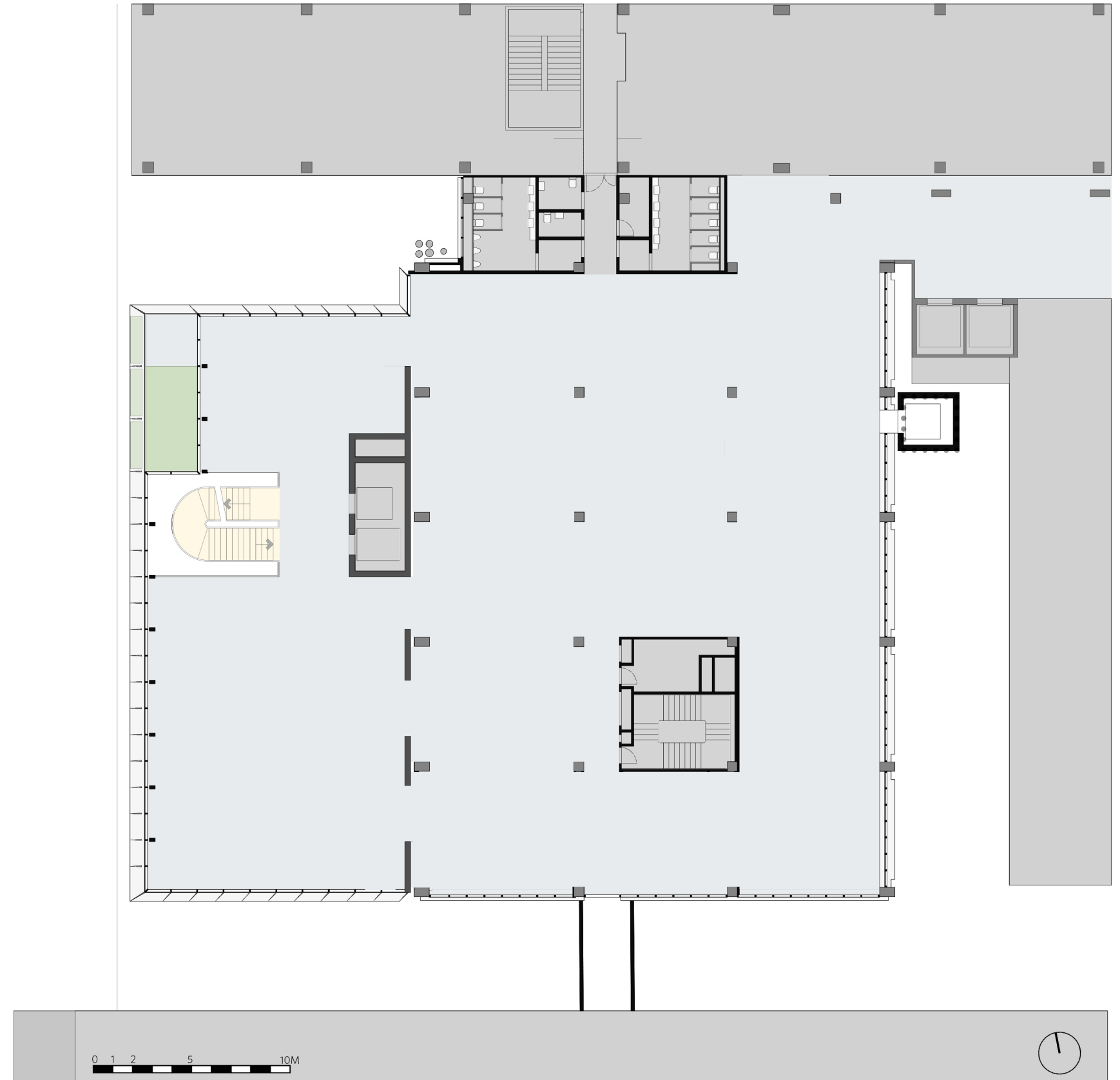
Notes

The following floor is a cold shell intended to be fitted out in the future as teaching spaces or science related facilities.

KEY

- TEACHING SPACES
- INFORMAL LEARNING
- CIRCULATION SPACES
- SERVICES / EGRESS / AMENITIES
- TERRACE / LANDSCAPED AREAS
- COLD SHELL SPACES

 GOODS LIFT



06_CONCEPT DESIGN PLANS

6.8 PROPOSED LEVEL 06 - WITH ROOF TERRACE (OPTION ONLY)

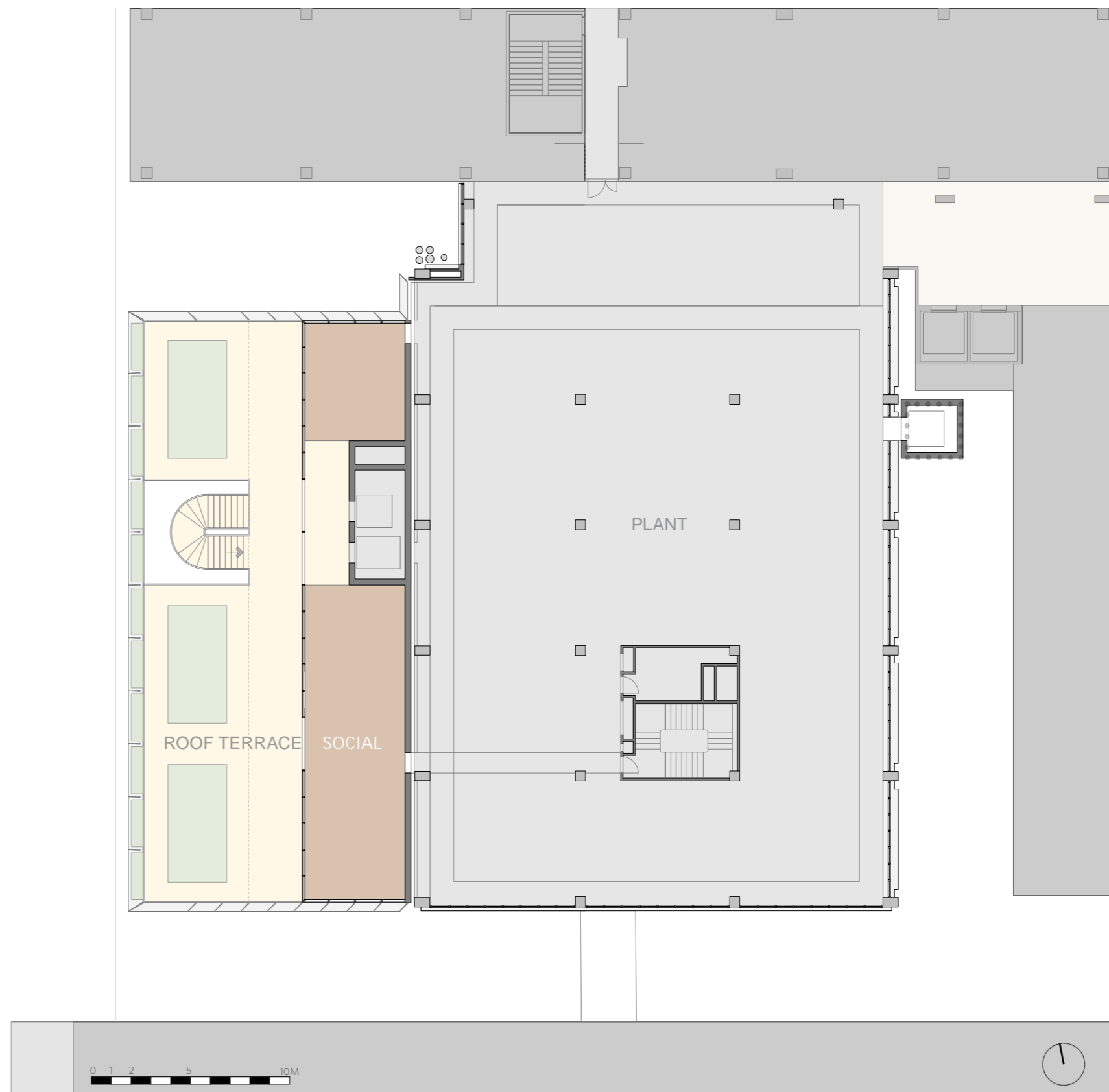
Notes

Level 06 plan with roof terrace and supporting amenities / social learning facilities. Presented as an option only for consideration.

Plant room services and spatial configurations have been developed by the engineering disciplines and will be detailed on the architectural drawings during schematic design

KEY

- TEACHING SPACES
- INFORMAL LEARNING
- CIRCULATION SPACES
- SERVICES / EGRESS / AMENITIES
- TERRACE / LANDSCAPED AREAS



06_CONCEPT DESIGN PLANS

6.9 PROPOSED LEVEL 06 - WITHOUT ROOF TERRACE (BASE OPTION)

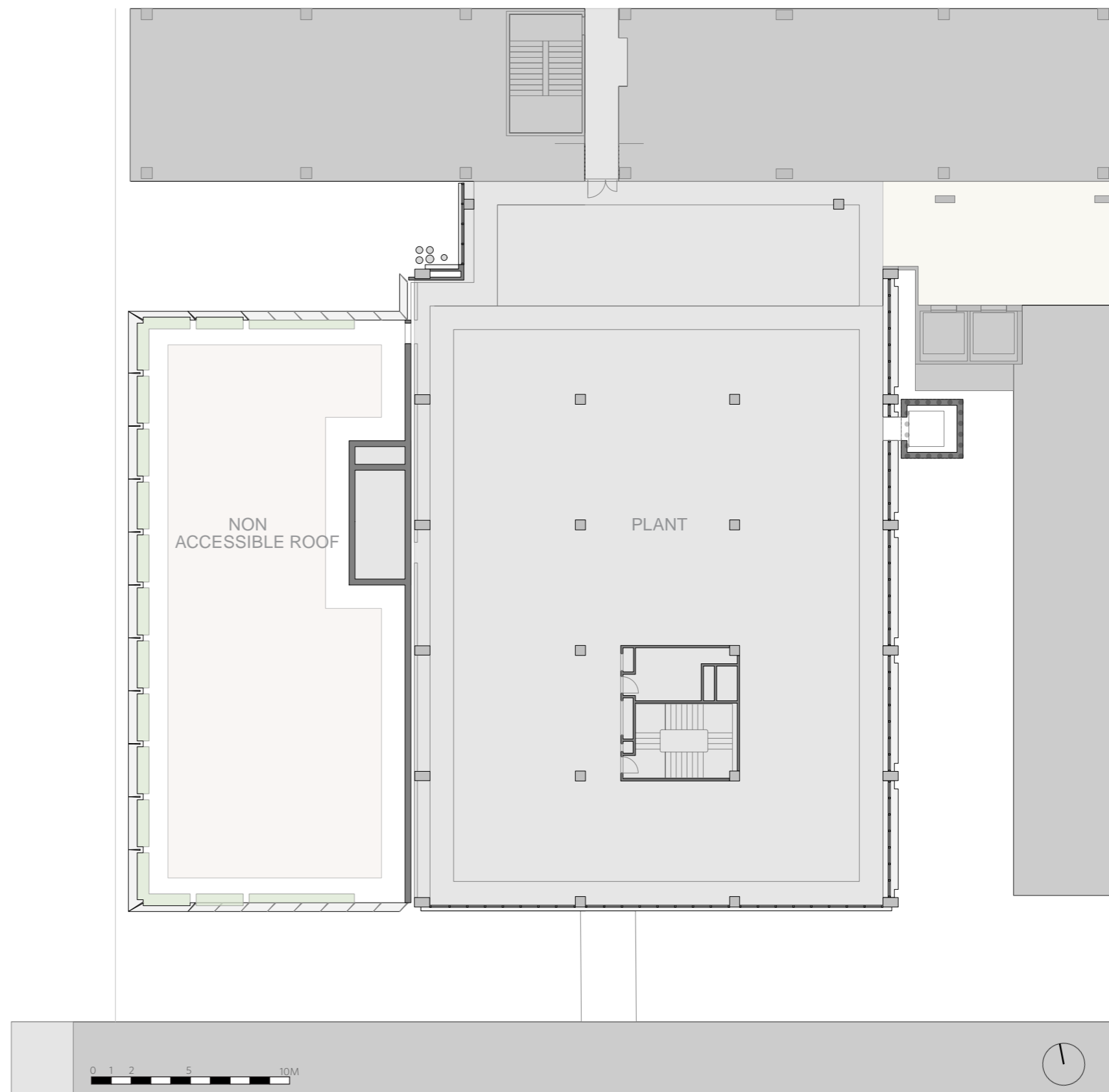
Notes

Base Level 06 plan. Non accessible roof above the new western extension. Low level and low maintenance planting proposed to new building edge.

Plant room services and spatial configurations have been developed by the engineering disciplines and will be detailed on the architectural drawings during schematic design.

KEY

- TEACHING SPACES
- INFORMAL LEARNING
- CIRCULATION SPACES
- SERVICES / EGRESS / AMENITIES
- TERRACE / LANDSCAPED AREAS



06_CONCEPT DESIGN PLANS

6.9 PROPOSED EAST WEST SECTION

