

# PROPOSED QUARRY

OFF ITALIA ROAD

EAGLETON

EAGLETON ROCK SYNDICATE

## DRAWING SCHEDULE

DWG No.	SHEET TITLE	REV
C00	COVER SHEET	2
C01	GENERAL ARRANGEMENT PLAN	2
C02	PRIVATE ROAD DETAIL PLAN (1 OF 3)	2
C03	PRIVATE ROAD DETAIL PLAN (2 OF 3)	2
C04	PRIVATE ROAD DETAIL PLAN (3 OF 3)	2
C05	BARLEIGH RANCH WAY DETAIL PLAN	2
C06	ACCESS ROAD DETAIL PLAN (1 OF 3)	2
C07	ACCESS ROAD DETAIL PLAN (2 OF 3)	2
C08	ACCESS ROAD DETAIL PLAN (3 OF 3)	2
C09	ROAD TYPICAL SECTION AND ACCESS ROAD (OVER CREEK) LONGITUDINAL SECTION	2
C10	INTERSECTION PLAN	2
C11	VEHICLE TURNING MOVEMENT (1 OF 2)	2
C12	VEHICLE TURNING MOVEMENT (2 OF 2)	2

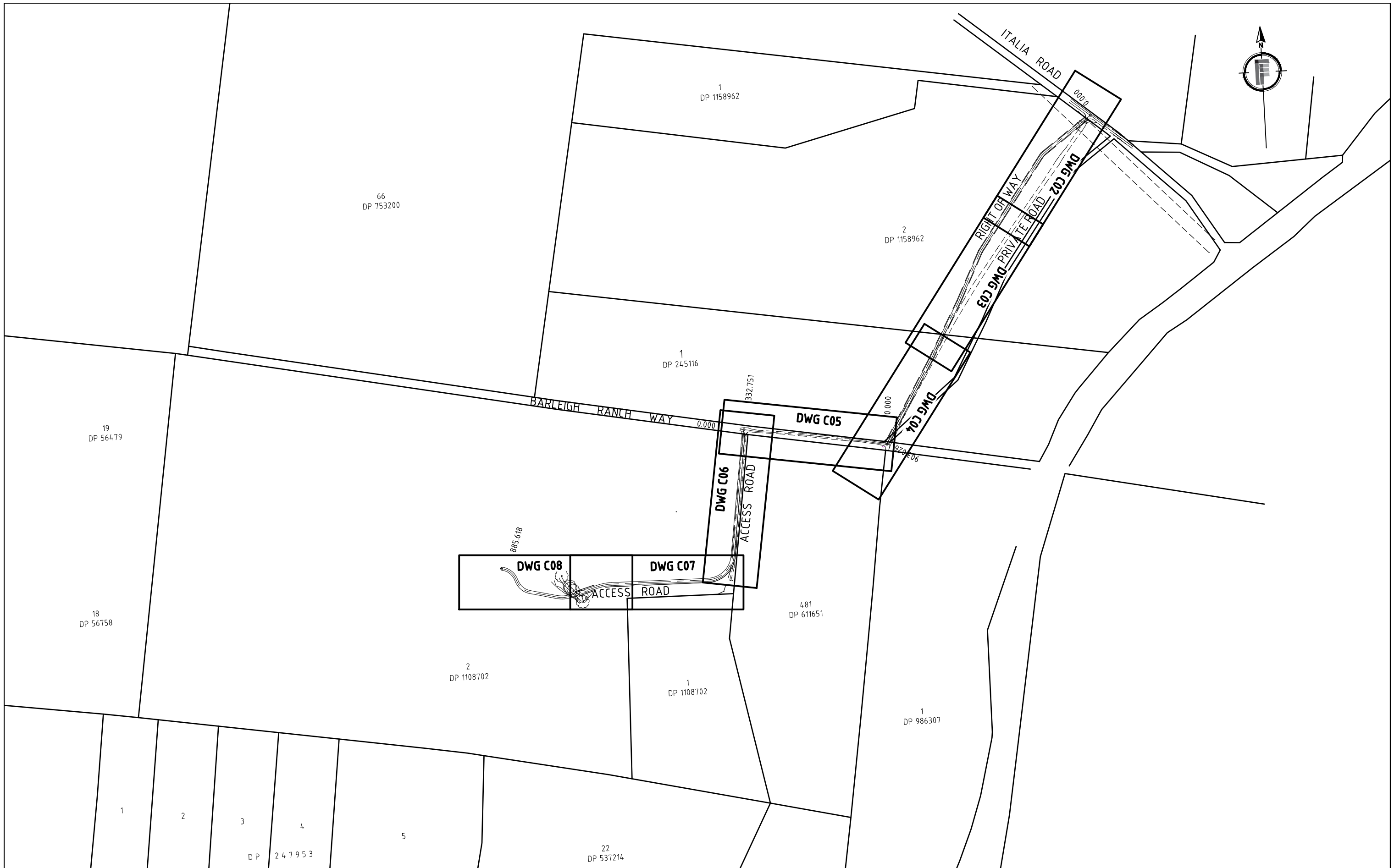


**A:** PO Box 3330  
Merewether NSW 2291

**M:** 0400 397 342

**ABN:** 76 164 874 499

**W:** fisherengineers.com.au



Amendment	Description	Drawn	App'd	Date
2	CLIENT AMENDMENTS	P.C.	A.J.F.	26 09 17
1	ORIGINAL ISSUE	P.C.	A.J.F.	21 09 16

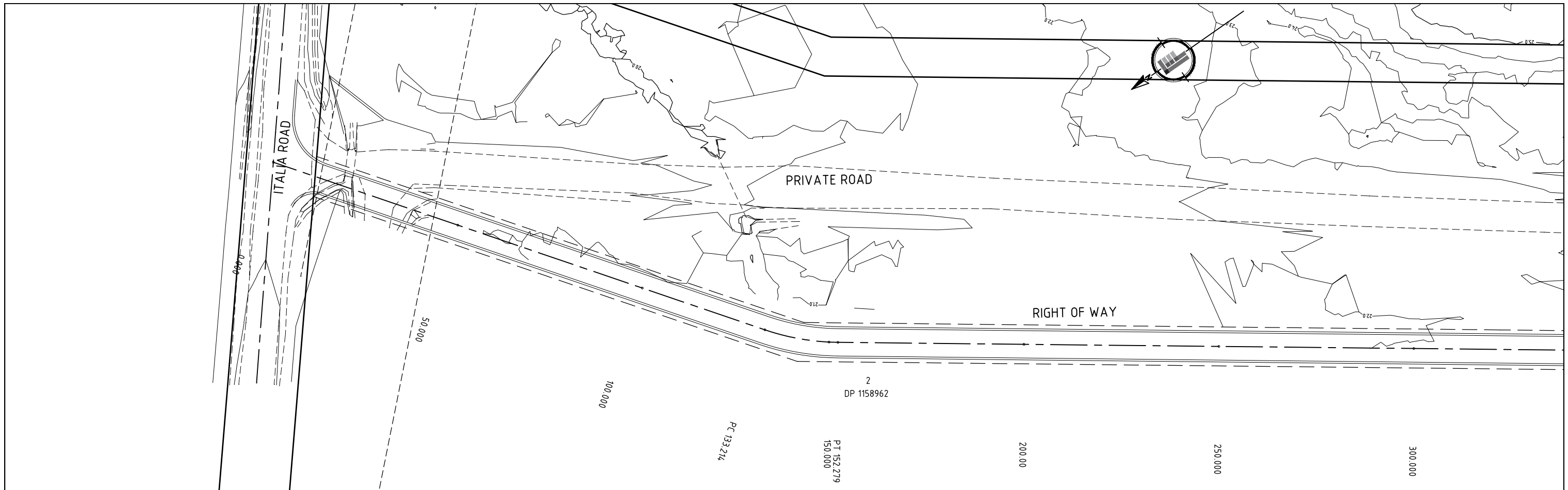
**COPYRIGHT**  
 COPYRIGHT IN THE DRAWINGS, INFORMATION AND DATA RECORDED HEREON IS THE PROPERTY OF FISHER CONSULTING ENGINEERS PTY LIMITED AND MAY NOT BE USED, COPIED OR REPRODUCED IN WHOLE OR PART FOR ANY PURPOSE OTHER THAN THAT FOR WHICH IT IS SUPPLIED WITHOUT THE PRIOR CONSENT OF FISHER CONSULTING ENGINEERS PTY LIMITED

Designed  
 A J F  
 Scale  
 1:4,000  
 Project Approval  
 Anthony Fisher BE (Civil) MIEAust CPEng  
 Consulting Civil Engineer

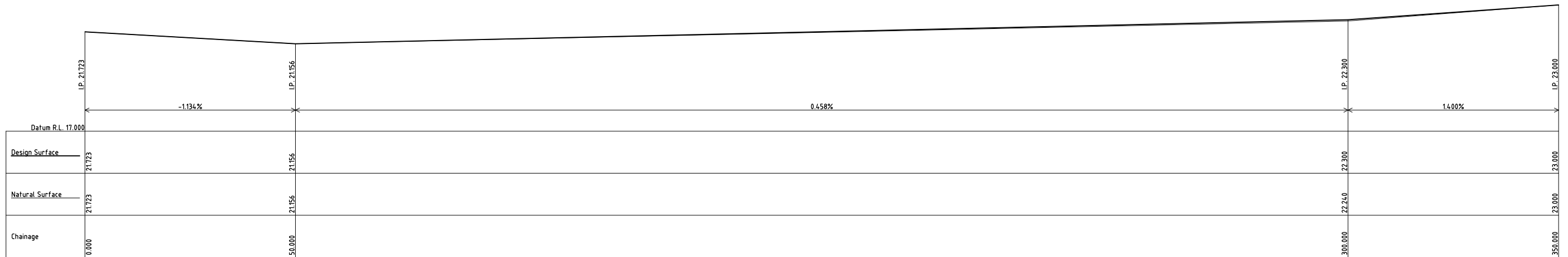
**A1 SHEET**  
 Cad Reference  
 15067 dC01 r2  
**FISHER CONSULTING ENGINEERS**  
 A: PO Box 3330 Merewether NSW 2291  
 M: 0400 397 342  
 ABN: 76 164 874 499  
 W: fisherengineers.com.au

**PROPOSED QUARRY OFF ITALIA ROAD EAGLETON**  
 EAGLETON ROCK SYNDICATE  
 GENERAL ARRANGEMENT PLAN

Project No	15067
Drawing No	C01
Revision	2



DETAIL PLAN  
SCALE 1:500



RIGHT OF WAY LONGITUDINAL SECTION



Amendment	Description	Drawn	App'd	Date
2	CLIENT AMENDMENTS	P.C.	A.J.F.	26 09 17
1	ORIGINAL ISSUE	P.C.	A.J.F.	21 09 16

Designed	A J F
Scale	1:500
Cad Reference	15067 dC02 r2
Project Approval	Anthony Fisher (BE (Civil) MIEAust CPEng Consulting Civil Engineer)

**COPYRIGHT**  
COPYRIGHT IN THE DRAWINGS, INFORMATION AND DATA RECORDED HEREON IS THE PROPERTY OF FISHER CONSULTING ENGINEERS PTY LIMITED AND MAY NOT BE USED, COPIED OR REPRODUCED IN WHOLE OR PART FOR ANY PURPOSE OTHER THAN THAT FOR WHICH IT IS SUPPLIED WITHOUT THE PRIOR CONSENT OF FISHER CONSULTING ENGINEERS PTY LIMITED

**A1 SHEET**

**A:** PO Box 3330  
Merewether  
NSW 2291

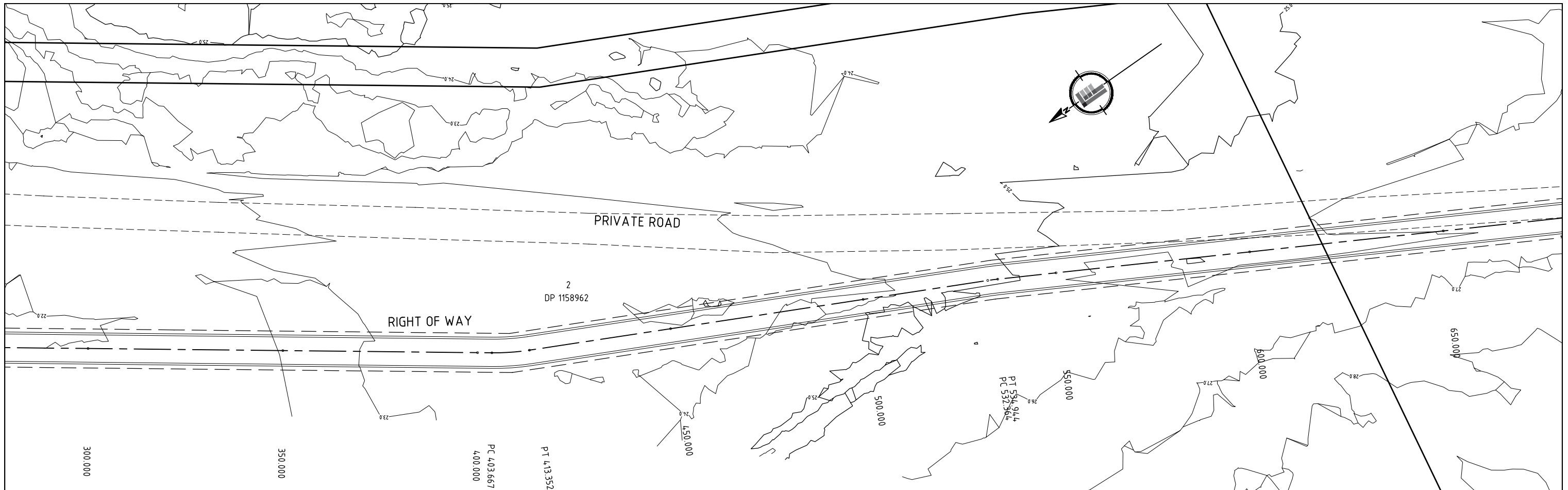
**M:** 0400 397 342

**W:** fisherengineers.com.au

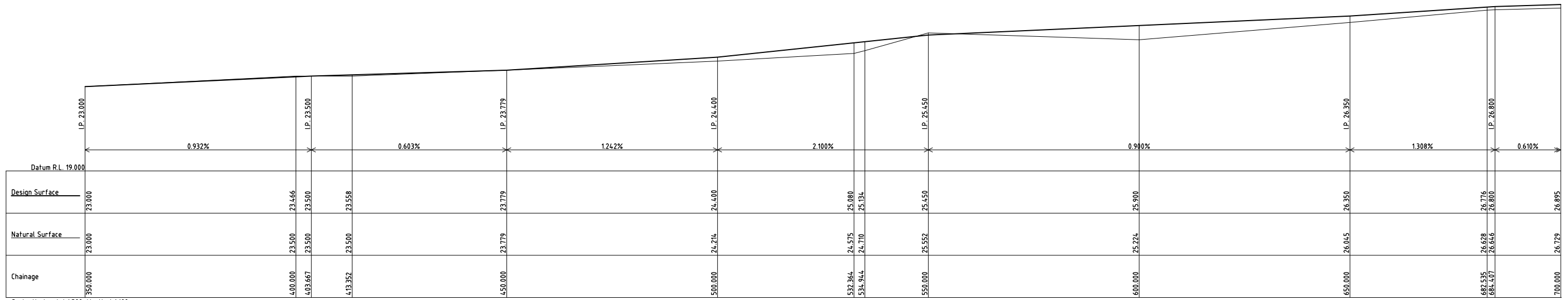
**ABN:** 76 164 874 499

**PROPOSED QUARRY  
OFF ITALIA ROAD EAGLETON  
EAGLETON ROCK SYNDICATE  
PRIVATE ROAD DETAIL PLAN (1 OF 3)**

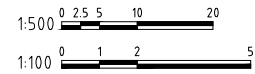
Project No	15067
Drawing No	C02
Revision	2



DETAIL PLAN  
SCALE 1:500



RIGHT OF WAY LONGITUDINAL SECTION



Amendment	Description	Drawn	App'd	Date
2	CLIENT AMENDMENTS	P.C.	A.J.F.	26 09 17
1	ORIGINAL ISSUE	P.C.	A.J.F.	21 09 16


**COPYRIGHT**  
COPYRIGHT IN THE DRAWINGS, INFORMATION AND DATA RECORDED HEREON IS THE PROPERTY OF FISHER CONSULTING ENGINEERS PTY LIMITED AND MAY NOT BE USED, COPIED OR REPRODUCED IN WHOLE OR PART FOR ANY PURPOSE OTHER THAN THAT FOR WHICH IT IS SUPPLIED WITHOUT THE PRIOR CONSENT OF FISHER CONSULTING ENGINEERS PTY LIMITED

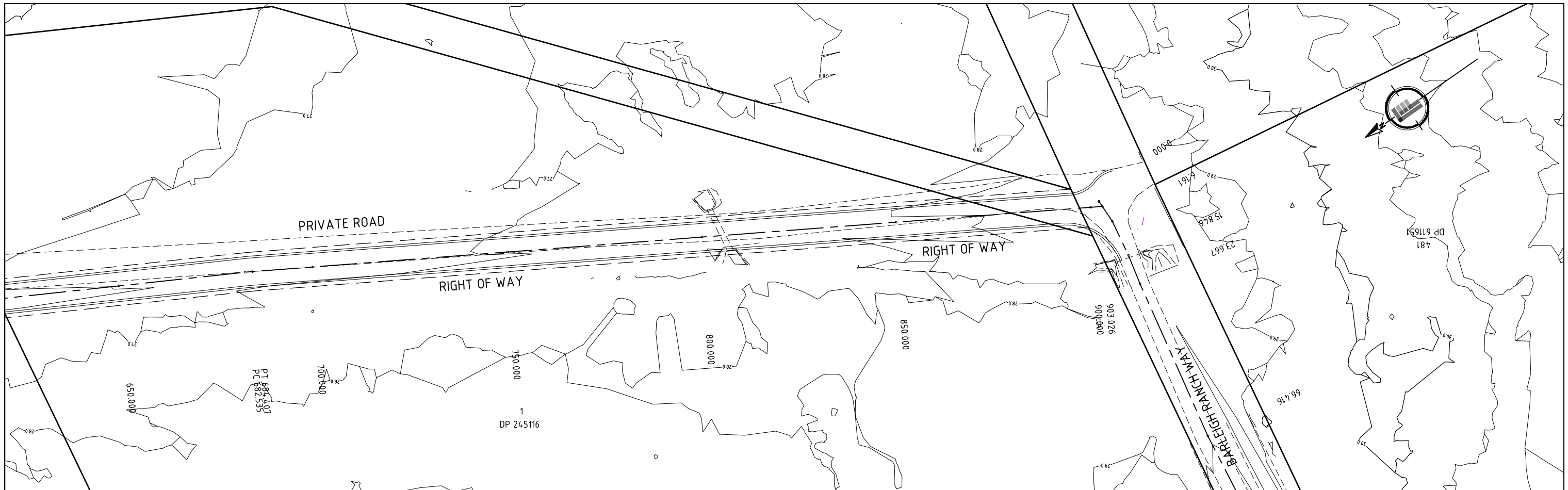
Designed  
A J F  
Scale  
1:500  
Cad Reference  
15067 dC03 r2  
Project Approval  
Anthony Fisher BE (Civil) MIEAust CPEng  
Consulting Civil Engineer

**A1 SHEET**  
A: PO Box 3330  
Merewether  
NSW 2291  
M: 0400 397 342  
ABN: 76 164 874 499  
W: fisherengineers.com.au

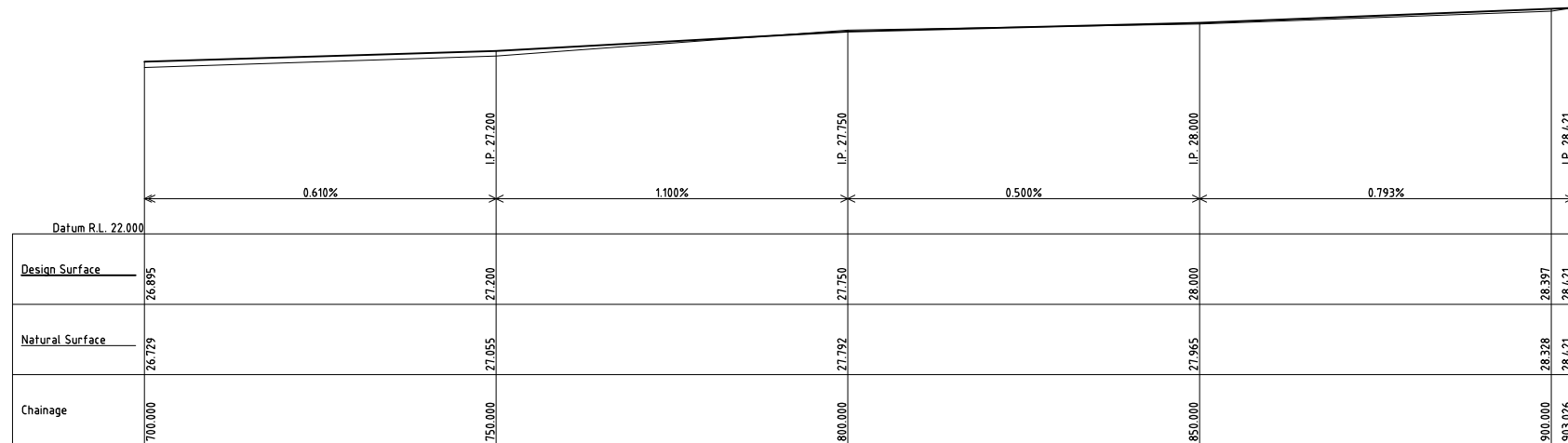


**PROPOSED QUARRY  
OFF ITALIA ROAD EAGLETON  
EAGLETON ROCK SYNDICATE  
PRIVATE ROAD DETAIL PLAN (2 OF 3)**

Project No <b>15067</b>	Revision <b>2</b>
Drawing No <b>C03</b>	

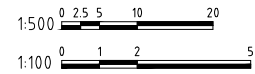


DETAIL PLAN  
SCALE 1:500



Scale Horizontal 1:500 Vertical 1:100

RIGHT OF WAY LONGITUDINAL SECTION

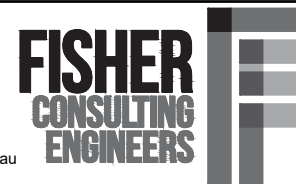


Amendment	Description	Drawn	App'd	Date
2	CLIENT AMENDMENTS	P.C.	A.J.F.	26 09 17
1	ORIGINAL ISSUE	P.C.	A.J.F.	21 09 16

**COPYRIGHT**  
COPYRIGHT IN THE DRAWINGS, INFORMATION AND DATA RECORDED HEREON IS THE PROPERTY OF FISHER CONSULTING ENGINEERS PTY LIMITED AND MAY NOT BE USED, COPIED OR REPRODUCED IN WHOLE OR PART FOR ANY PURPOSE OTHER THAN THAT FOR WHICH IT IS SUPPLIED WITHOUT THE PRIOR CONSENT OF FISHER CONSULTING ENGINEERS PTY LIMITED

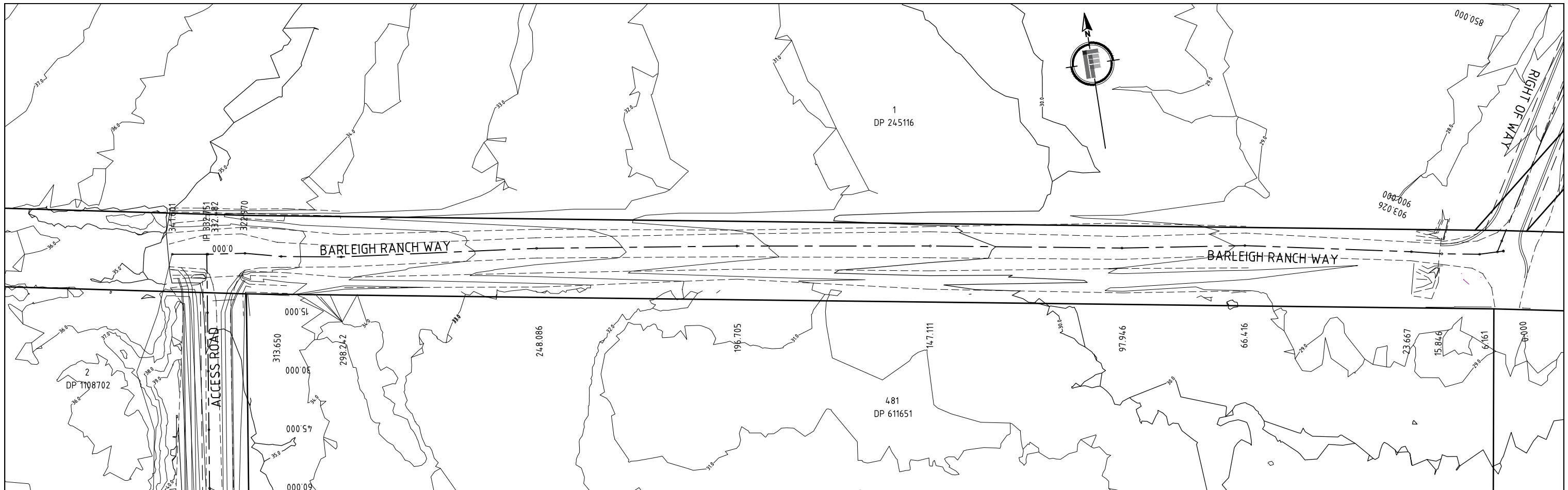
Designed  
A J F  
Scale  
1:500  
Cad Reference  
15067 dC04 r2  
Project Approval  
Anthony Fisher BE (Civil) MIEAust CPEng  
Consulting Civil Engineer

**A1 SHEET**  
A: PO Box 3330  
Merewether  
NSW 2291  
M: 0400 397 342  
ABN: 76 164 874 499  
W: fisherengineers.com.au

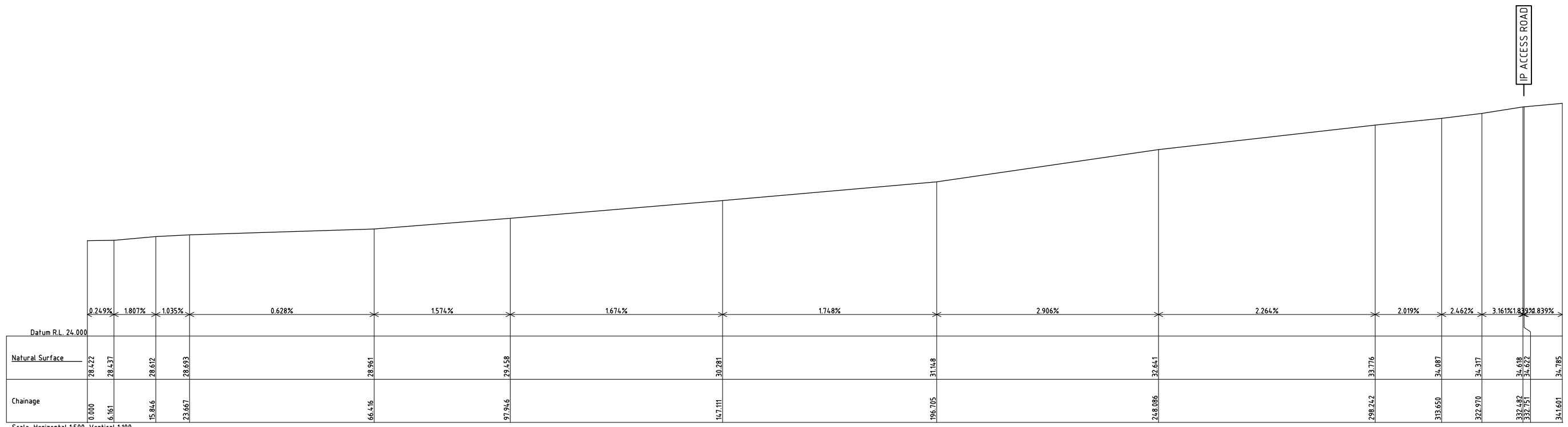


**PROPOSED QUARRY  
OFF ITALIA ROAD EAGLETON  
EAGLETON ROCK SYNDICATE  
PRIVATE ROAD DETAIL PLAN (3 OF 3)**

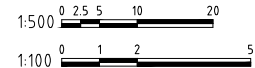
Project No  
**15067**  
Drawing No  
**C04**  
Revision  
**2**



DETAIL PLAN  
SCALE 1:500



BARLEIGH RANCH WAY LONGITUDINAL SECTION



Amendment	Description	Drawn	App'd	Date
2	CLIENT AMENDMENTS	P.C.	A.J.F.	26 09 17
1	ORIGINAL ISSUE	P.C.	A.J.F.	21 09 16


**COPYRIGHT**  
COPYRIGHT IN THE DRAWINGS, INFORMATION AND DATA RECORDED HEREON IS THE PROPERTY OF FISHER CONSULTING ENGINEERS PTY LIMITED AND MAY NOT BE USED, COPIED OR REPRODUCED IN WHOLE OR PART FOR ANY PURPOSE OTHER THAN THAT FOR WHICH IT IS SUPPLIED WITHOUT THE PRIOR CONSENT OF FISHER CONSULTING ENGINEERS PTY LIMITED

Designed  
A J F

Scale  
1:500

Cad Reference  
15067 dC05 r2

Project Approval  
Anthony Fisher (BE (Civil) MIEAust CPEng Consulting Civil Engineer)

**A1 SHEET**

A: PO Box 3330  
Merewether  
NSW 2291

M: 0400 397 342

ABN: 76 164 874 499

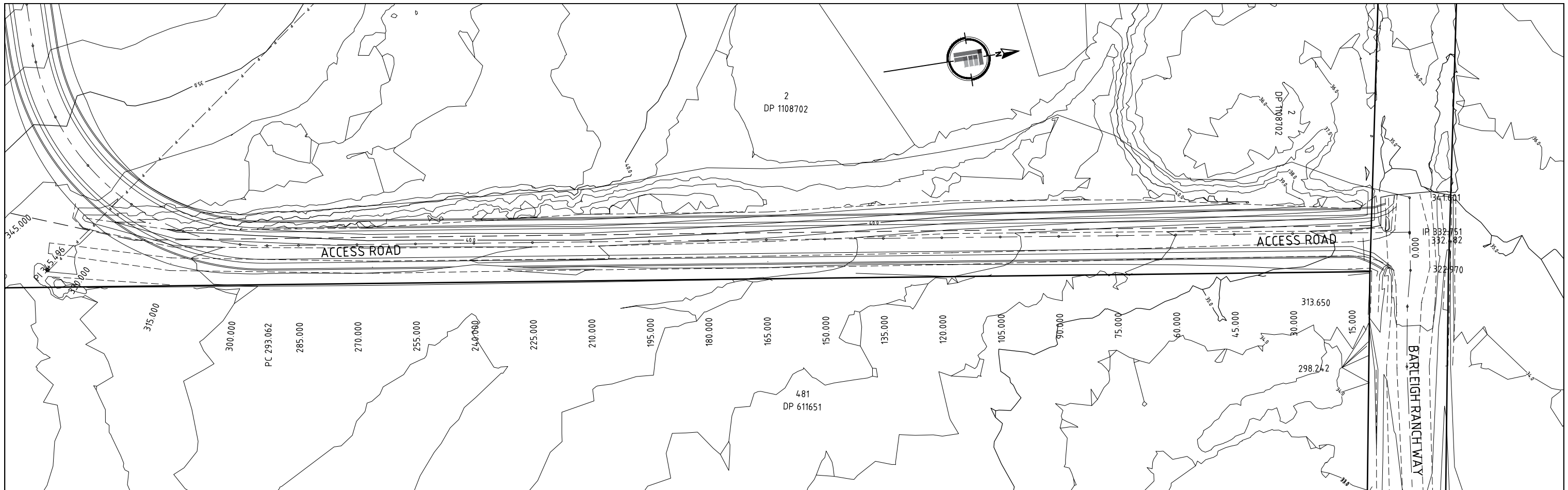
W: fisherengineers.com.au

**PROPOSED QUARRY  
OFF ITALIA ROAD EAGLETON**

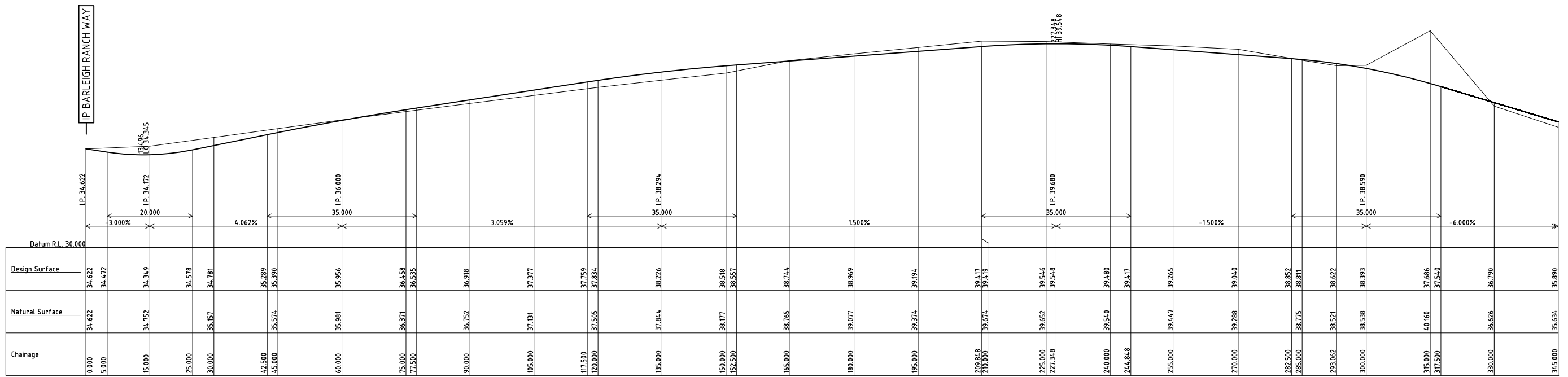
EAGLETON ROCK SYNDICATE

BARLEIGH RANCH WAY DETAIL PLAN

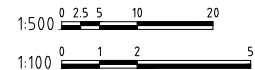
Project No	15067
Drawing No	C05
Revision	2



DETAIL PLAN  
SCALE 1:500



ACCESS ROAD WAY LONGITUDINAL SECTION



Amendment	Description	Drawn	App'd	Date
2	CLIENT AMENDMENTS	P.C.	A.J.F.	26 09 17
1	ORIGINAL ISSUE	P.C.	A.J.F.	21 09 16

Designed	A J F
Scale	1:500
Cad Reference	15067 dC06 r2
Project Approval	Anthony Fisher (BE (Civil) MIEAust CPEng Consulting Civil Engineer)

**COPYRIGHT**  
COPYRIGHT IN THE DRAWINGS, INFORMATION AND DATA RECORDED HEREON IS THE PROPERTY OF FISHER CONSULTING ENGINEERS PTY LIMITED AND MAY NOT BE USED, COPIED OR REPRODUCED IN WHOLE OR PART FOR ANY PURPOSE OTHER THAN THAT FOR WHICH IT IS SUPPLIED WITHOUT THE PRIOR CONSENT OF FISHER CONSULTING ENGINEERS PTY LIMITED

**A1 SHEET**

**Project No**  
15067

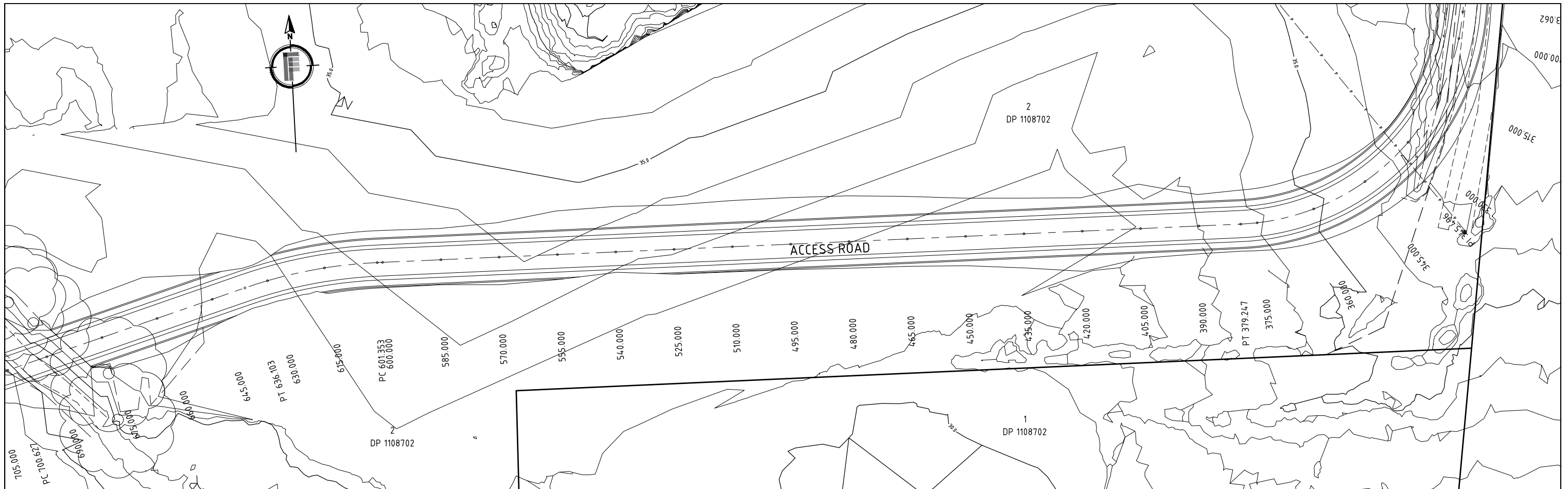
**Client**  
EAGLETON ROCK SYNDICATE

**FISHER CONSULTING ENGINEERS**

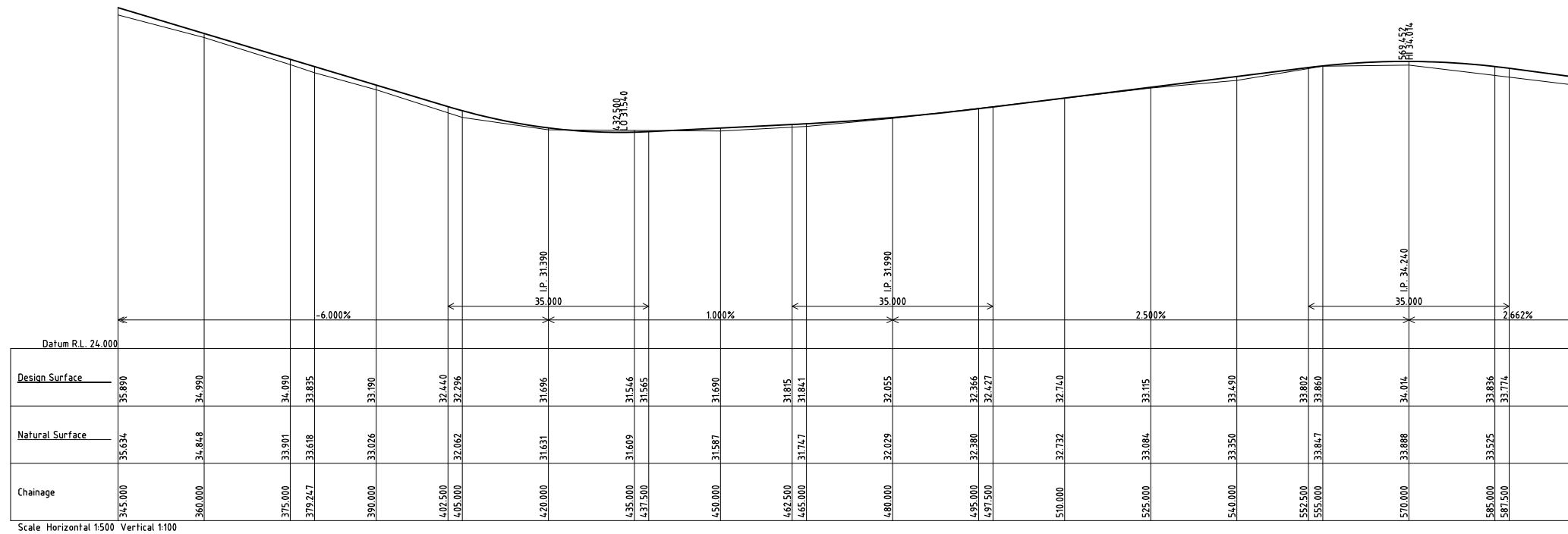
**A:** PO Box 3330 Merewether NSW 2291  
**M:** 0400 397 342  
**ABN:** 76 164 874 499  
**W:** fisherengineers.com.au

**PROPOSED QUARRY OFF ITALIA ROAD EAGLETON**  
**EAGLETON ROCK SYNDICATE**  
ACCESS ROAD DETAIL PLAN (1 OF 3)

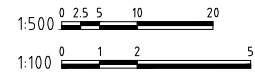
Project No	15067
Drawing No	C06
Revision	2



DETAIL PLAN  
SCALE 1:500



ACCESS ROAD WAY LONGITUDINAL SECTION



Amendment	Description	Drawn	App'd	Date
2	CLIENT AMENDMENTS	P.C	A.J.F	26 09 17
1	ORIGINAL ISSUE	P.C	A.J.F	21 09 16

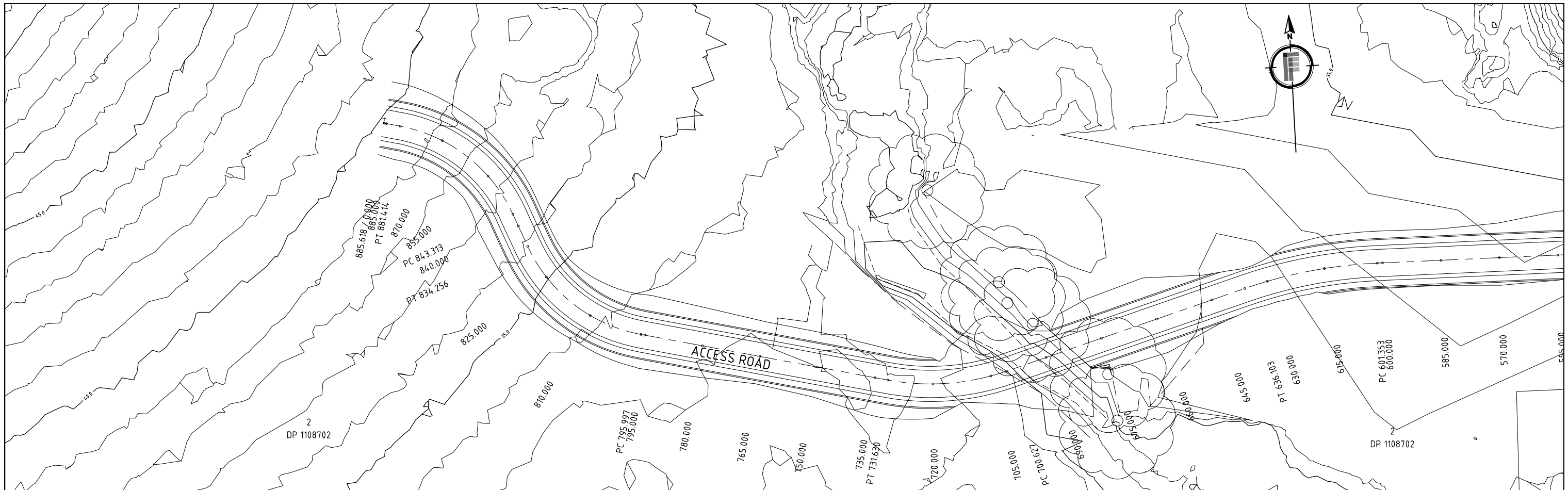
COPYRIGHT	
COPYRIGHT IN THE DRAWINGS, INFORMATION AND DATA RECORDED HEREON IS THE PROPERTY OF FISHER CONSULTING ENGINEERS PTY LIMITED AND MAY NOT BE USED, COPIED OR REPRODUCED IN WHOLE OR PART FOR ANY PURPOSE OTHER THAN THAT FOR WHICH IT IS SUPPLIED WITHOUT THE PRIOR CONSENT OF FISHER CONSULTING ENGINEERS PTY LIMITED	

Designed A J F	<b>A1 SHEET</b>
Scale 1:500	Cad Reference 15067 dC07 r2
Project Approval Anthony Fisher (BE (Civil) MIEAust CPEng Consulting Civil Engineer)	

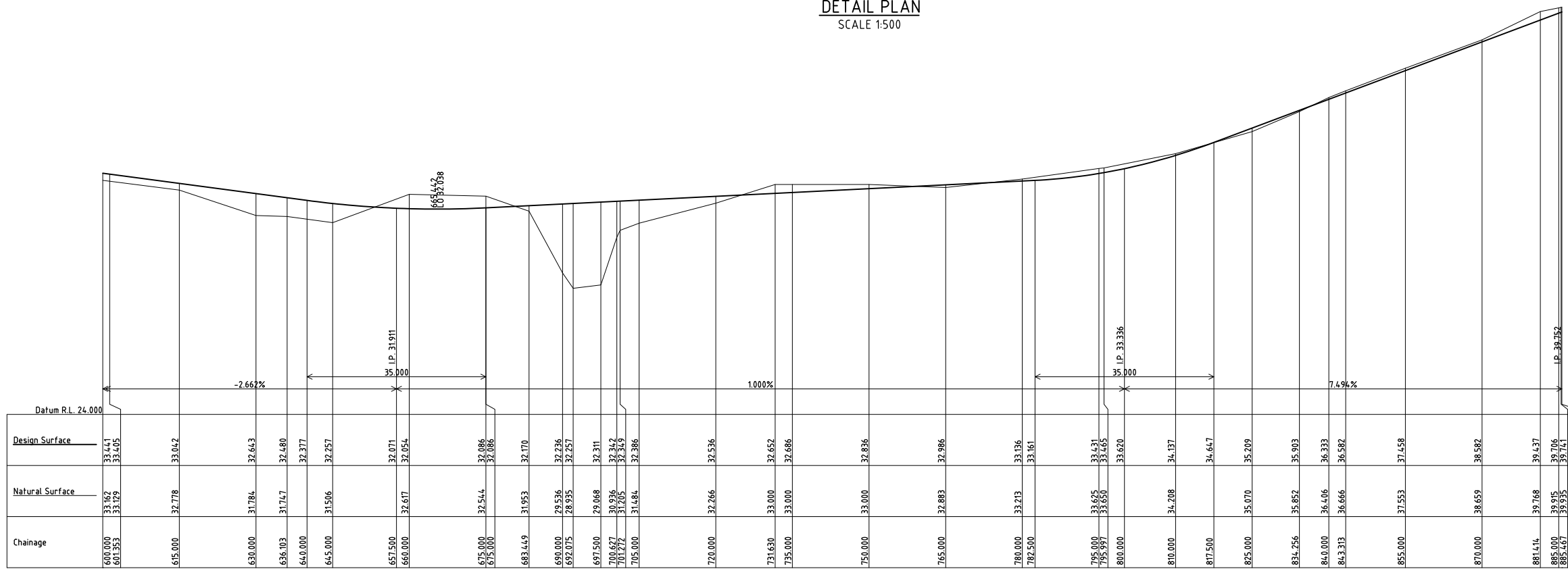
**A:** PO Box 3330 Merewether NSW 2291  
**M:** 0400 397 342  
**W:** fisherengineers.com.au  
**ABN:** 76 164 874 499

**PROPOSED QUARRY OFF ITALIA ROAD EAGLETON**  
**EAGLETON ROCK SYNDICATE**  
 ACCESS ROAD DETAIL PLAN (2 OF 3)

Project No <b>15067</b>	
Drawing No <b>C07</b>	Revision <b>2</b>

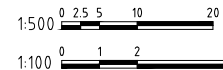


DETAIL PLAN  
SCALE 1:500



Scale Horizontal 1:500 Vertical 1:100

ACCESS ROAD WAY LONGITUDINAL SECTION

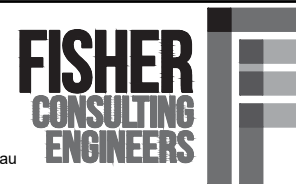


Amendment	Description	Drawn	App'd	Date
2	CLIENT AMENDMENTS	P.C.	A.J.F.	26 09 17
1	ORIGINAL ISSUE	P.C.	A.J.F.	21 09 16

**COPYRIGHT**  
COPYRIGHT IN THE DRAWINGS, INFORMATION AND DATA RECORDED HEREON IS THE PROPERTY OF FISHER CONSULTING ENGINEERS PTY LIMITED AND MAY NOT BE USED, COPIED OR REPRODUCED IN WHOLE OR PART FOR ANY PURPOSE OTHER THAN THAT FOR WHICH IT IS SUPPLIED WITHOUT THE PRIOR CONSENT OF FISHER CONSULTING ENGINEERS PTY LIMITED

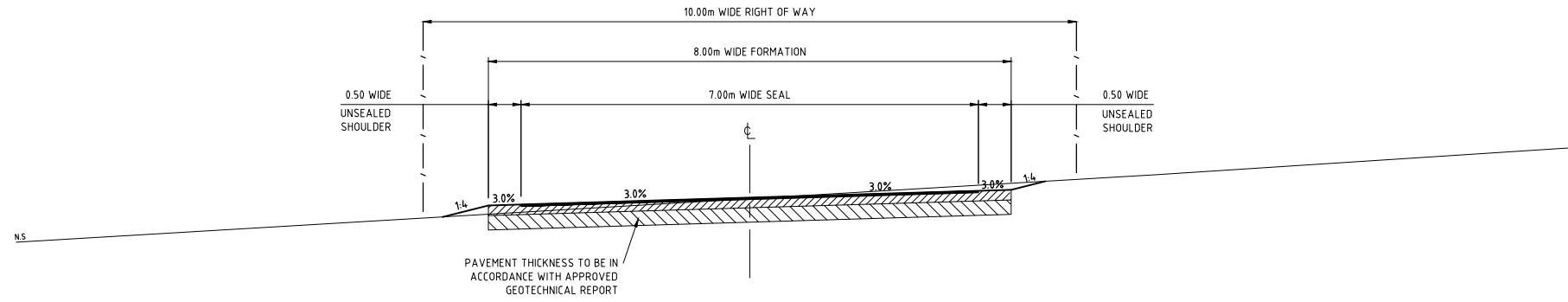
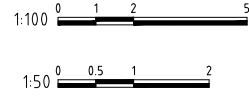
Designed  
A J F  
Scale  
1:500  
Cad Reference  
15067 dC08 r2  
Project Approval  
Anthony Fisher BE (Civil) MIEAust CPEng  
Consulting Civil Engineer

**A1 SHEET**  
A: PO Box 3330  
Merewether  
NSW 2291  
M: 0400 397 342  
ABN: 76 164 874 499  
W: fisherengineers.com.au

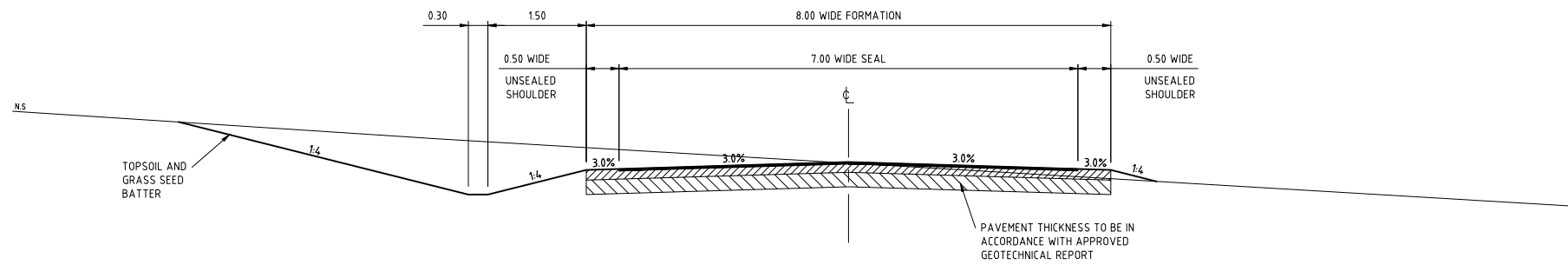


**PROPOSED QUARRY  
OFF ITALIA ROAD EAGLETON  
EAGLETON ROCK SYNDICATE  
ACCESS ROAD DETAIL PLAN (3 OF 3)**

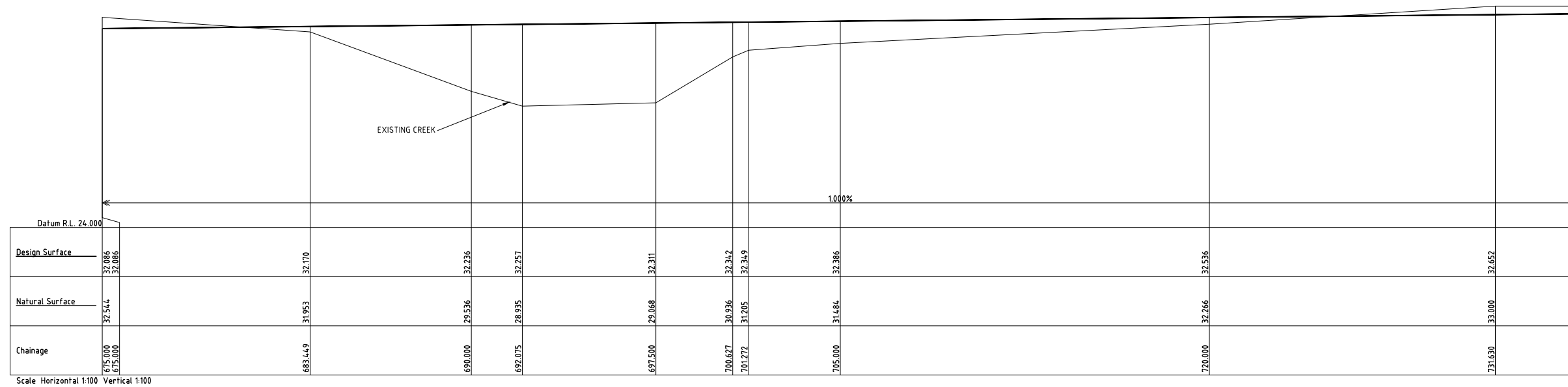
Project No  
**15067**  
Drawing No  
**C08**  
Revision  
**2**



**RIGHT OF WAY - TYPICAL SECTION**  
ITALIA ROAD TO BARLEIGH RANCH WAY  
SCALE 1:50



**ACCESS ROAD - TYPICAL SECTION**  
SCALE 1:50



**ACCESS ROAD (OVER CREEK) LONGITUDINAL SECTION**

Amendment	Description	Drawn	App'd	Date
2	CLIENT AMENDMENTS	P.C.	A.J.F.	26 09 17
1	ORIGINAL ISSUE	P.C.	A.J.F.	21 09 16

**COPYRIGHT**

COPYRIGHT IN THE DRAWINGS, INFORMATION AND DATA RECORDED HEREON IS THE PROPERTY OF FISHER CONSULTING ENGINEERS PTY LIMITED AND MAY NOT BE USED, COPIED OR REPRODUCED IN WHOLE OR PART FOR ANY PURPOSE OTHER THAN THAT FOR WHICH IT IS SUPPLIED WITHOUT THE PRIOR CONSENT OF FISHER CONSULTING ENGINEERS PTY LIMITED

**Designed**

A J F

**Scale**

AS SHOWN

**Project Approval**

Anthony Fisher BE (Civil) MIEAust CPEng Consulting Civil Engineer

**A1 SHEET**

**Cad Reference**

15067 dC09 r2

**A:** PO Box 3330 Merewether NSW 2291

**M:** 0400 397 342

**ABN:** 76 164 874 499

**W:** fisherengineers.com.au



**PROPOSED QUARRY**  
**OFF ITALIA ROAD EAGLETON**  
**EAGLETON ROCK SYNDICATE**  
ROAD TYPICAL SECTION AND ACCESS ROAD (OVER CREEK)  
LONGITUDINAL SECTION

Project No

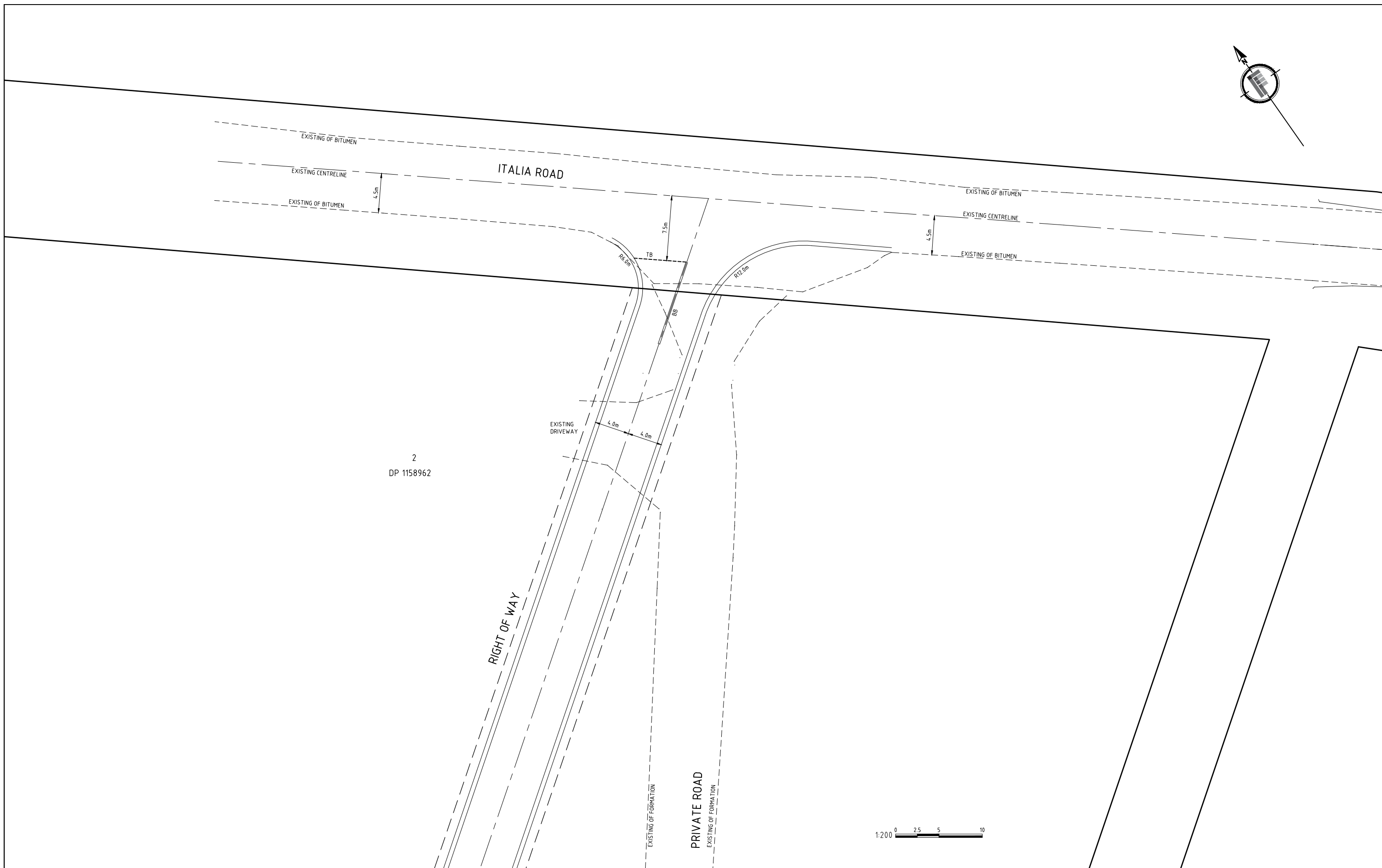
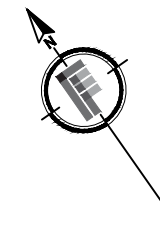
15067

Drawing No

C09

Revision

2



2  
DP 1158962

1:200 0 2.5 5 10

Amendment	Description	Drawn	App'd	Date
2	CLIENT AMENDMENTS	P.C.	A.J.F.	26 09 17
1	ORIGINAL ISSUE	P.C.	A.J.F.	21 09 16

2  
DP 1158962

**COPYRIGHT**  
COPYRIGHT IN THE DRAWINGS, INFORMATION AND DATA RECORDED HEREON IS THE PROPERTY OF FISHER CONSULTING ENGINEERS PTY LIMITED AND MAY NOT BE USED, COPIED OR REPRODUCED IN WHOLE OR PART FOR ANY PURPOSE OTHER THAN THAT FOR WHICH IT IS SUPPLIED WITHOUT THE PRIOR CONSENT OF FISHER CONSULTING ENGINEERS PTY LIMITED

Designed  
A J F

Scale  
1:200

Cad Reference  
15067 dC10 r2

Project Approval  
Anthony Fisher BE (Civil) MIEAust CPEng  
Consulting Civil Engineer

**A1 SHEET**

A: PO Box 3330  
Merewether  
NSW 2291

M: 0400 397 342

W: fisherengineers.com.au

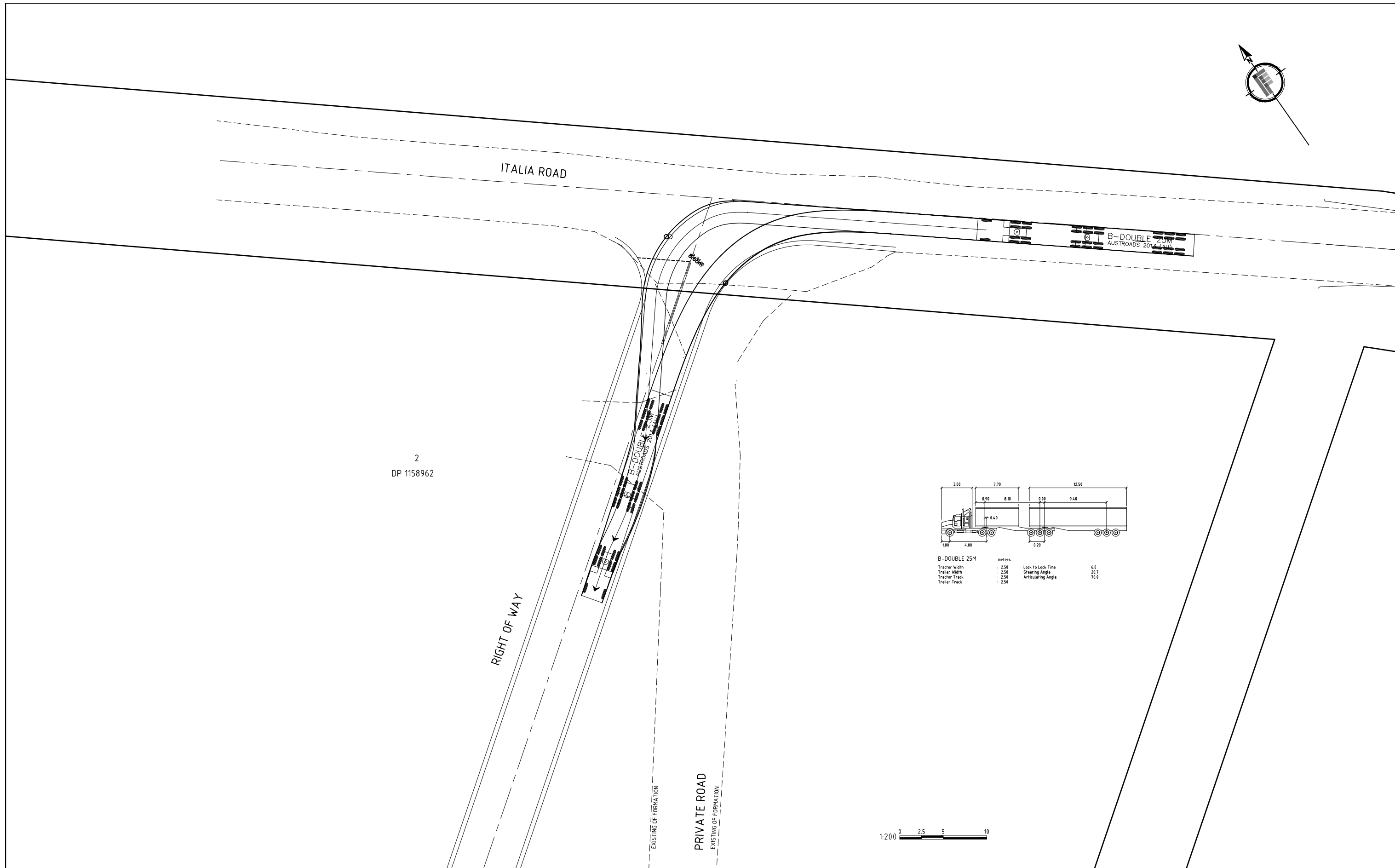
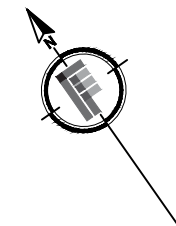
**FISHER CONSULTING ENGINEERS**

**PROPOSED QUARRY  
OFF ITALIA ROAD EAGLETON**

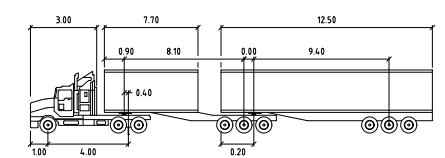
**EAGLETON ROCK SYNDICATE**

INTERSECTION PLAN

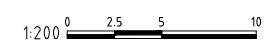
Project No	15067
Drawing No	C10
Revision	2



2  
DP 1158962



B-DOUBLE 25M	Tractor Width	2.50	Lock to Lock Time	6.0
	Trailer Width	2.50	Steering Angle	20.7
	Tractor Track	2.50	Articulating Angle	70.0
	Trailer Track	2.50		



Amendment	Description	Drawn	App'd	Date
2	CLIENT AMENDMENTS	P.C.	A.J.F.	26 09 17
1	ORIGINAL ISSUE	P.C.	A.J.F.	21 09 16

2  
DP 1158962

**COPYRIGHT**  
COPYRIGHT IN THE DRAWINGS, INFORMATION AND DATA RECORDED HEREON IS THE PROPERTY OF FISHER CONSULTING ENGINEERS PTY LIMITED AND MAY NOT BE USED, COPIED OR REPRODUCED IN WHOLE OR PART FOR ANY PURPOSE OTHER THAN THAT FOR WHICH IT IS SUPPLIED WITHOUT THE PRIOR CONSENT OF FISHER CONSULTING ENGINEERS PTY LIMITED

Designed  
A J F

Scale  
1:200

Cad Reference  
15067 dC11 r2

Project Approval  
Anthony Fisher BE (Civil) MIEAust CPEng  
Consulting Civil Engineer

**A1 SHEET**

A: PO Box 3330  
Merewether  
NSW 2291

M: 0400 397 342

W: fisherengineers.com.au

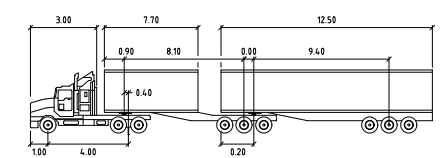
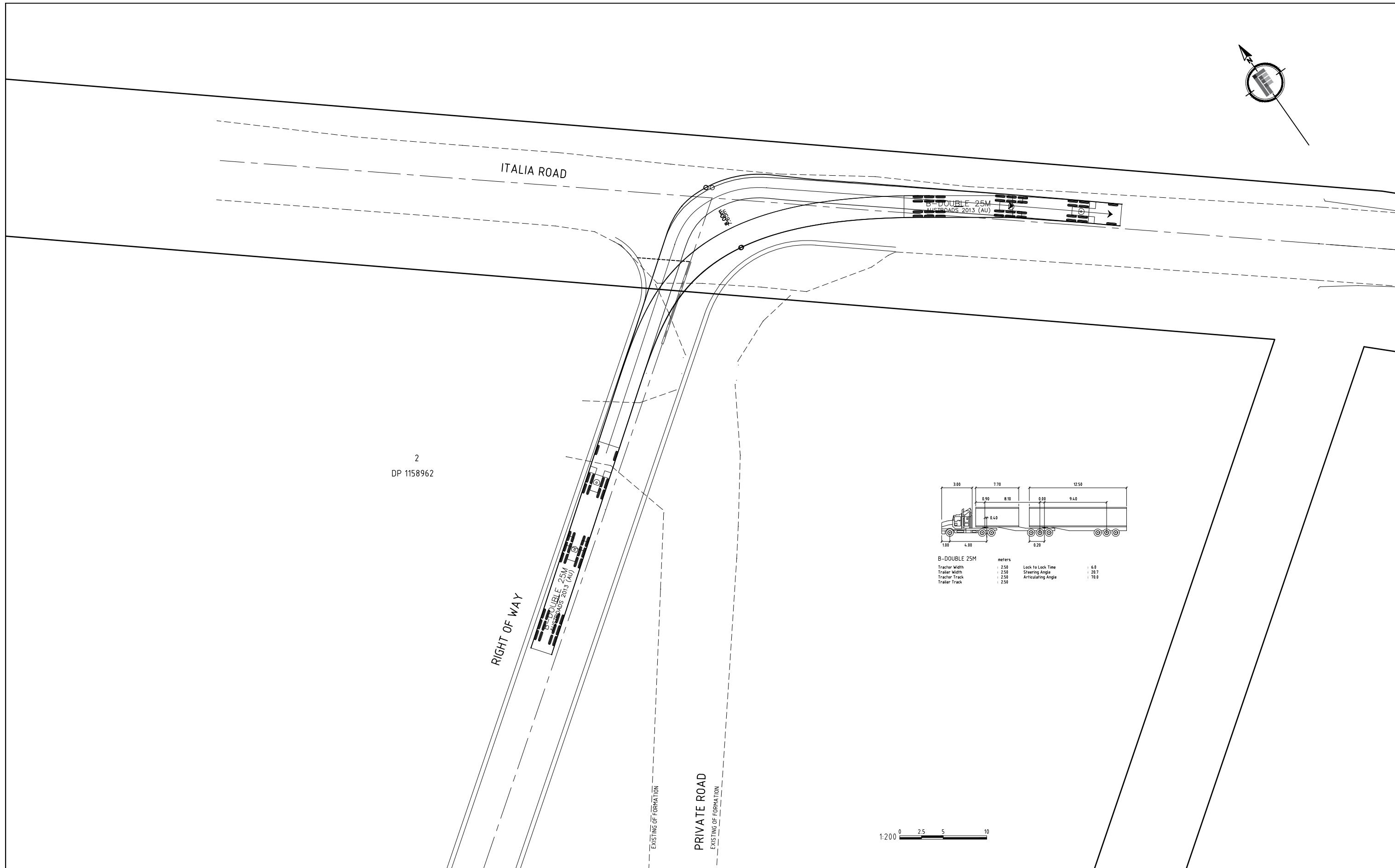
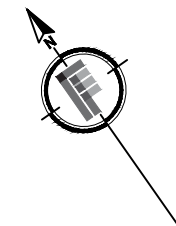
**FISHER CONSULTING ENGINEERS**

**PROPOSED QUARRY  
OFF ITALIA ROAD EAGLETON**

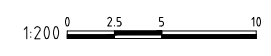
EAGLETON ROCK SYNDICATE

VEHICLE TURNING MOVEMENT (1 OF 2)

Project No	15067
Drawing No	C11
Revision	2



B-DOUBLE 25M		meters	
Tractor Width	: 2.50	Lock to Lock Time	: 6.0
Tractor Track	: 2.50	Steering Angle	: 20.7
Trailer Track	: 2.50	Articulating Angle	: 70.0



Amendment	Description	Drawn	App'd	Date
2	CLIENT AMENDMENTS	P.C.	A.J.F.	26 09 17
1	ORIGINAL ISSUE	P.C.	A.J.F.	21 09 16

2  
DP 1158962

**COPYRIGHT**  
COPYRIGHT IN THE DRAWINGS, INFORMATION AND DATA RECORDED HEREON IS THE PROPERTY OF FISHER CONSULTING ENGINEERS PTY LIMITED AND MAY NOT BE USED, COPIED OR REPRODUCED IN WHOLE OR PART FOR ANY PURPOSE OTHER THAN THAT FOR WHICH IT IS SUPPLIED WITHOUT THE PRIOR CONSENT OF FISHER CONSULTING ENGINEERS PTY LIMITED

Designed  
A J F

Scale  
1:200

Cad Reference  
15067 dC12 r2

Project Approval  
Anthony Fisher BE (Civil) MIEAust CPEng  
Consulting Civil Engineer

**A1 SHEET**

A: PO Box 3330  
Merewether  
NSW 2291

M: 0400 397 342

W: fisherengineers.com.au

**FISHER CONSULTING ENGINEERS**

**PROPOSED QUARRY  
OFF ITALIA ROAD EAGLETON  
EAGLETON ROCK SYNDICATE**

VEHICLE TURNING MOVEMENT (2 OF 2)

Project No <b>15067</b>	
Drawing No <b>C12</b>	Revision <b>2</b>