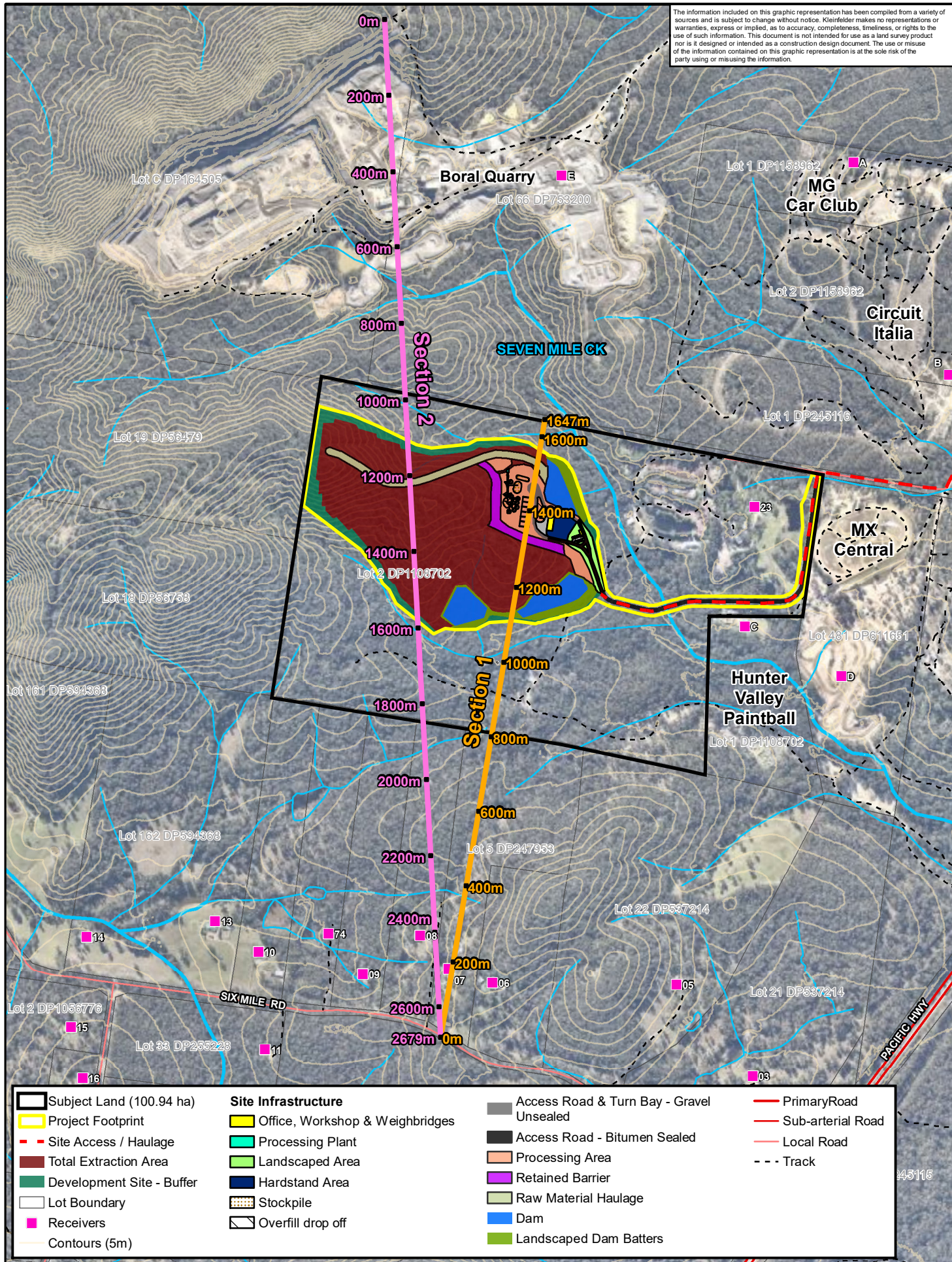


The information included on this graphic representation has been compiled from a variety of sources and is subject to change without notice. Kleinfelder makes no representations or warranties, express or implied, as to accuracy, completeness, timeliness, or rights to the use of such information. This document is not intended for use as a land survey product nor is it designed or intended as a construction design document. The use or misuse of the information contained on this graphic representation is at the sole risk of the party using or misusing the information.



0 55 110 220
metres

GDA 1994 MGA Zone 56
1:13,000

N

PROJECT REFERENCE: 20173040
DATE DRAWN: 12/10/2017 16:57 Version 1
DRAWN BY: BDeane

DATA SOURCE:
Nearmap - 2017
LPI - 2017

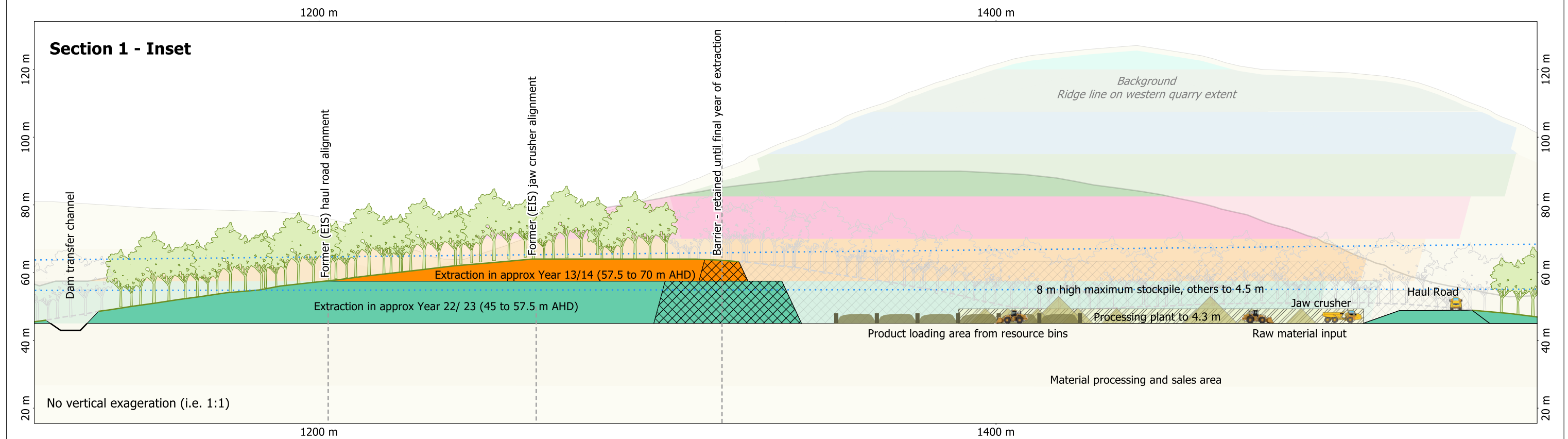
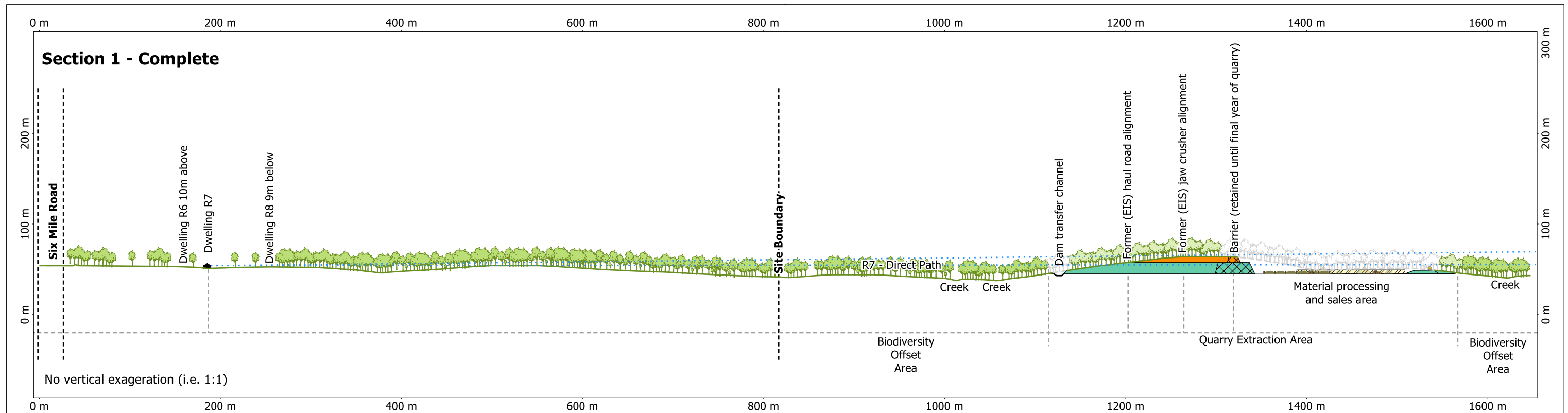
Eagleton Quarry Cross Section Overview

Eagleton Rock Syndicate Pty Ltd
Eagleton Quarry
13 Barleigh Ranch Way, Eagleton NSW

FIGURE:

1



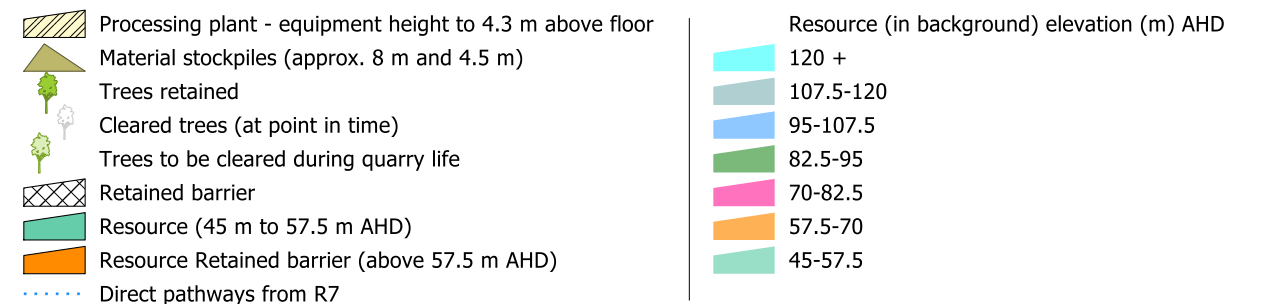


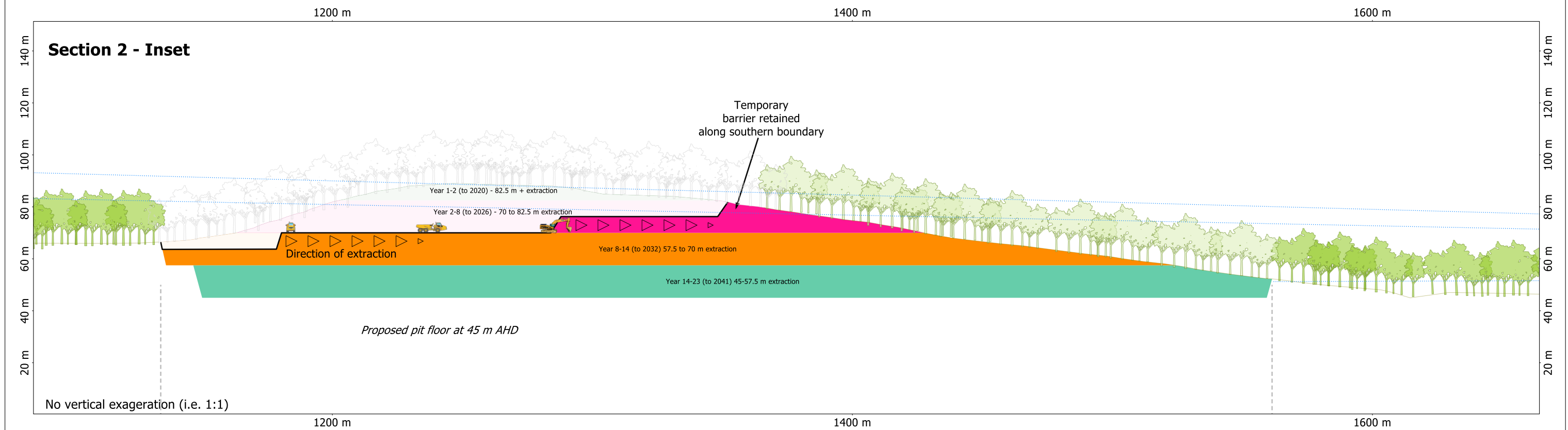
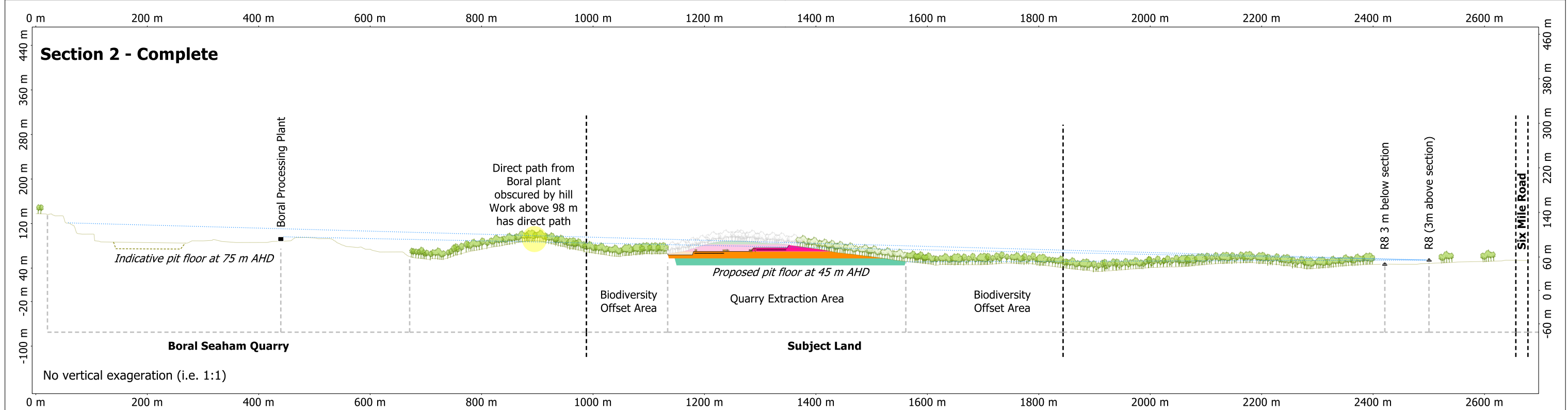
Eagleton Rock Quarry

Section 1

Six Mile Road to processing area

Drawn: JBerry | 12/10/2017





Eagleton Rock Quarry

Section 2 Boral to Six Mile Road



Drawn: JBerry | 13/10/2017

- ▷ ▷ Direction of extraction
 - Direct pathways from R7
 - 🌳 Trees retained
 - 🌳 Trees cleared (at point in time)
 - 🌳 Trees to be cleared during quarry life
- Extraction levels**
- Year 1-2 (to 2020) - 82.5 and higher extraction
 - Year 2-8 (to 2026) - 70 to 82.5 m extraction
 - Year 8-14 (to 2032) 57.5 to 70 m Extraction
 - Year 14-23 (to 2041) 45-57.5m Extraction