

NSW GOVERNMENT Planning

Issued under the Environmental Planning and Assessment Act 1979

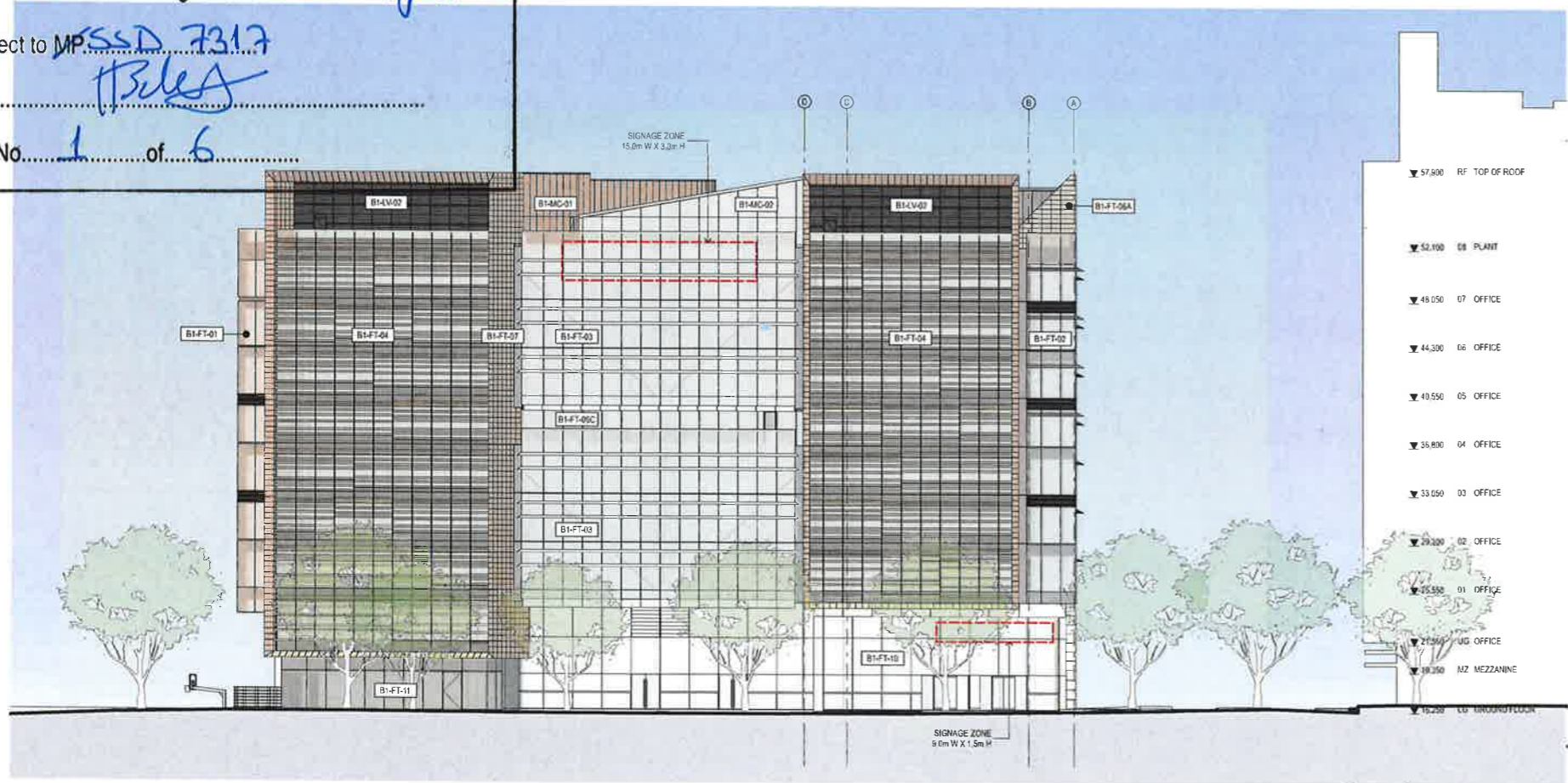
Approved Section 96 (1A) (1) (2) Modification Application

No. 2 granted on the 22 August 2017

in respect to MP SSD 7317

Signed [Signature]

Sheet No. 1 of 6

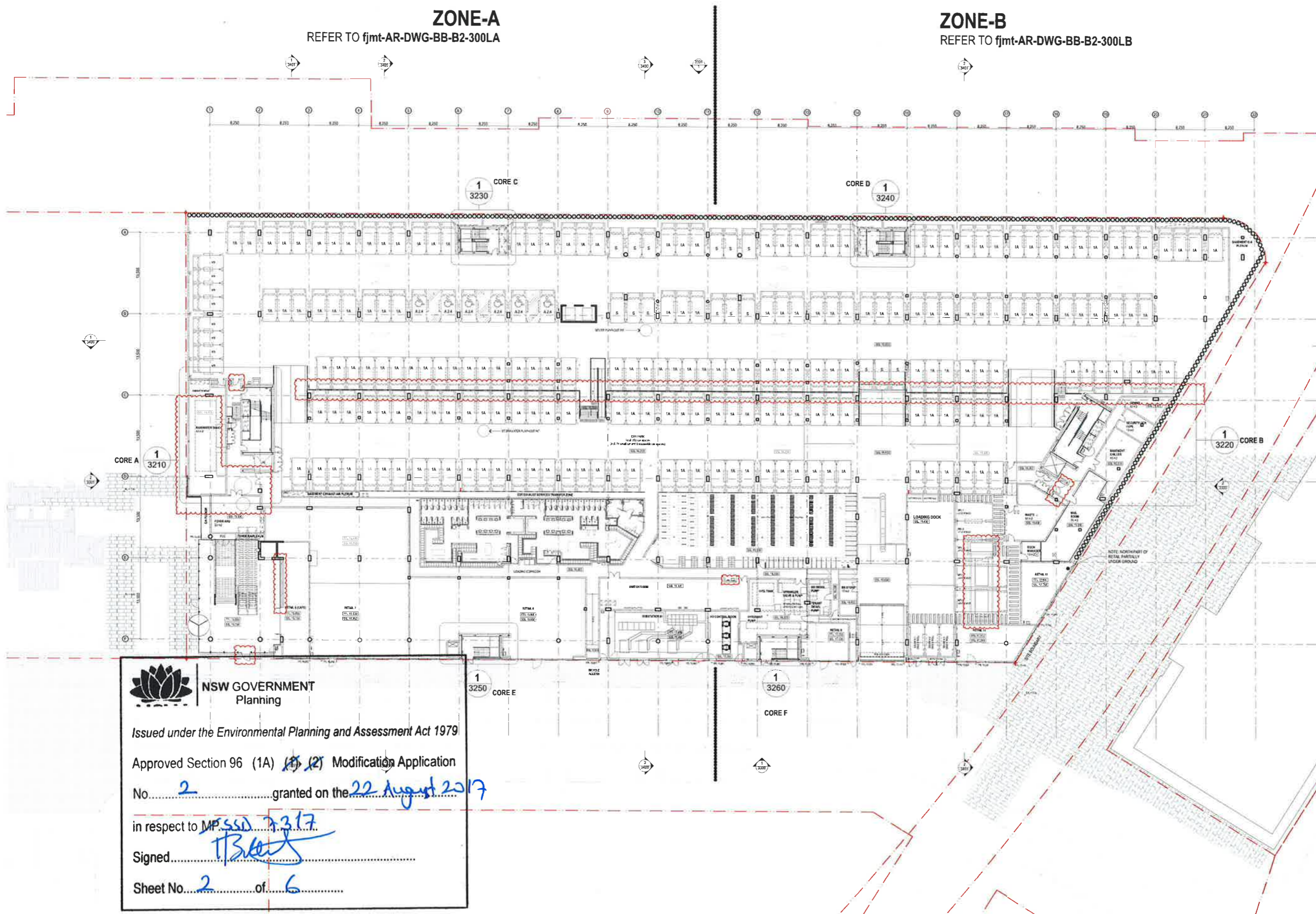



| FACADE TYPE | LOCATION | DESCRIPTION |
|-------------|---|---|
| B1-FT-01 | SOUTH VOLUMES | GLAZED CURTAIN WALL, PROFILED & GLAZED SPANDRELS |
| B1-FT-02 | NORTH VOLUMES | GLAZED CURTAIN WALL, PROFILED & GLAZED SPANDRELS EXTERNAL ALUMINIUM SUNSHADES |
| B1-FT-03 | EAST / WEST RECESSES | GLAZED CURTAIN WALL, GLAZED SPANDREL ALUMINIUM SUNSHADES |
| B1-FT-04 | EAST VOLUMES | GLAZED CURTAIN WALL, GLAZED SPANDREL ALUMINIUM BATTENS |
| B1-FT-05 | NORTH-WEST VOLUME | GLAZED CURTAIN WALL, GLAZED SPANDREL |
| B1-FT-06 | A B C CORE CLADDING NORTH CORE WEST CORE SOUTH CORE | SOLID PANEL CLADDING |
| B1-FT-07 | EAST RETURNS | SOLID PANEL CLADDING |
| B1-FT-08 | A B C SOLID CLADDING AMENITIES NORTH-WEST VOLUME RECESS | SOLID PANEL CLADDING |
| B1-FT-09 | A B C WINDOW WALL UG SOUTH UG NORTH L4 EAST | GLAZED WINDOW WALL WITH ALUMINIUM BATTENS EAST OF CORE ONLY |
| B1-FT-10 | LOBBY (GROUND FLOOR) | LOBBY GLAZING |
| B1-FT-11 | RETAIL (GROUND FLOOR) | RETAIL GLAZING |
| B1-FT-12 | CARPARK CLADDING | METAL ARCHITECTURAL SCREEN WITH SOLID AND BATTENS |
| B1-MC-01/02 | ROOF PLANT | METAL SOLID CLADDING |
| B1-LV-01/02 | ROOF PLANT | ALUMINIUM LOUVRES |
| B1-SC-01 | SOUTH CHILDCARE | SCREEN WALL WITH OPPORTUNITY FOR INTEGRATED ARTWORK AND VERTICAL LANDSCAPING SUBJECT TO DEVELOPMENT OF ARTWORK STRATEGY |

GENERAL NOTE
 A- DIMENSIONS AND EXISTING CONDITIONS SHOWN
 B- C-FOOTED AND VERTICAL BY THE CONTRACTOR
 BEFORE PROCEEDING WITH THE WORK
 C- ALL LEVELS ARE ABOVE AUSTRIAN HEIGHT DATUM
 D- DO NOT SCALE DRAWINGS
 E- USE FIGURED DIMENSIONS ONLY

ZONE-A
 REFER TO fjmt-AR-DWG-BB-B2-300LA

ZONE-B
 REFER TO fjmt-AR-DWG-BB-B2-300LB



 **NSW GOVERNMENT**
 Planning

Issued under the Environmental Planning and Assessment Act 1979

Approved Section 96 (1A) (1) (2) Modification Application
 No. 2 granted on the 22 August 2017

in respect to MP SSD 7317

Signed [Signature]

Sheet No. 2 of 6

| NO. | REVISION | DATE |
|-----|---------------------|----------|
| 1 | ISSUED FOR APPROVAL | 22/08/17 |
| 2 | ISSUED FOR APPROVAL | 22/08/17 |
| 3 | ISSUED FOR APPROVAL | 22/08/17 |
| 4 | ISSUED FOR APPROVAL | 22/08/17 |
| 5 | ISSUED FOR APPROVAL | 22/08/17 |
| 6 | ISSUED FOR APPROVAL | 22/08/17 |
| 7 | ISSUED FOR APPROVAL | 22/08/17 |
| 8 | ISSUED FOR APPROVAL | 22/08/17 |
| 9 | ISSUED FOR APPROVAL | 22/08/17 |
| 10 | ISSUED FOR APPROVAL | 22/08/17 |

fjmt + SISSONS

Australian Technology Park - Building 2
 Lot 8, 9 & 12 at ATP Eveleigh
 Sydney NSW 2015

General Arrangement Plans 1:250
 Lower Ground

Scale: 1:250 @ B1

M/ATP fjmt-AR-DWG-BB-B2-300L P

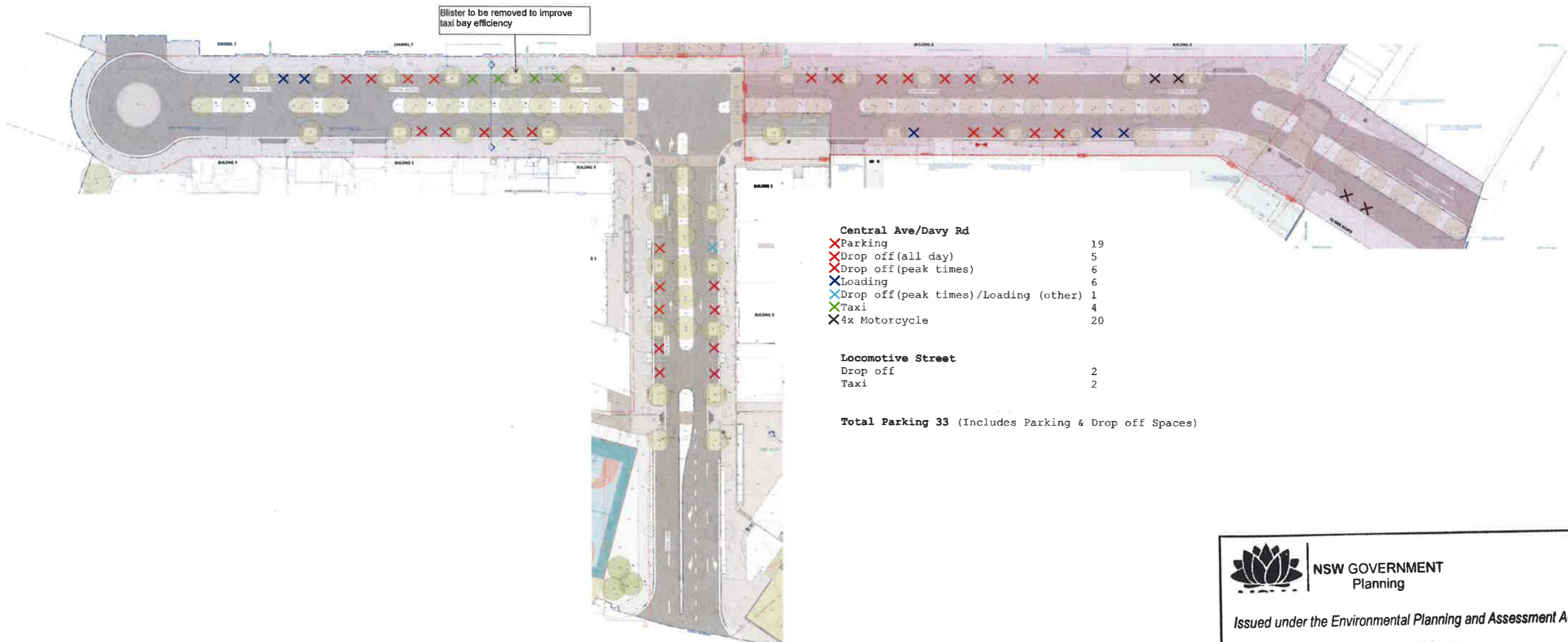
Issue for Approval

**Australian Technology Park
Indicative Parking Plan**

SK.03 Rev A
7/08/17




Blister to be removed to improve taxi bay efficiency



| | |
|---|----|
| Central Ave/Davy Rd | |
| ✕ Parking | 19 |
| ✕ Drop off (all day) | 5 |
| ✕ Drop off (peak times) | 6 |
| ✕ Loading | 6 |
| ✕ Drop off (peak times)/Loading (other) | 1 |
| ✕ Taxi | 4 |
| ✕ 4x Motorcycle | 20 |

| | |
|--------------------------|---|
| Locomotive Street | |
| Drop off | 2 |
| Taxi | 2 |

Total Parking 33 (Includes Parking & Drop off Spaces)



**NSW GOVERNMENT
Planning**

Issued under the Environmental Planning and Assessment Act 1979

Approved Section 96 (1A) ~~(1)~~ (2) Modification Application
No. 2 granted on the 22 August 2017

in respect to MP SSD 7317

Signed [Signature]

Sheet No. 6 of 6