

**Building 3**  
 Allowable Building Height (storeys)\*: 10  
 Proposed Building Height (storeys)\*: 3

L02: Childcare  
 L01: Community  
 G: Gym / Retail

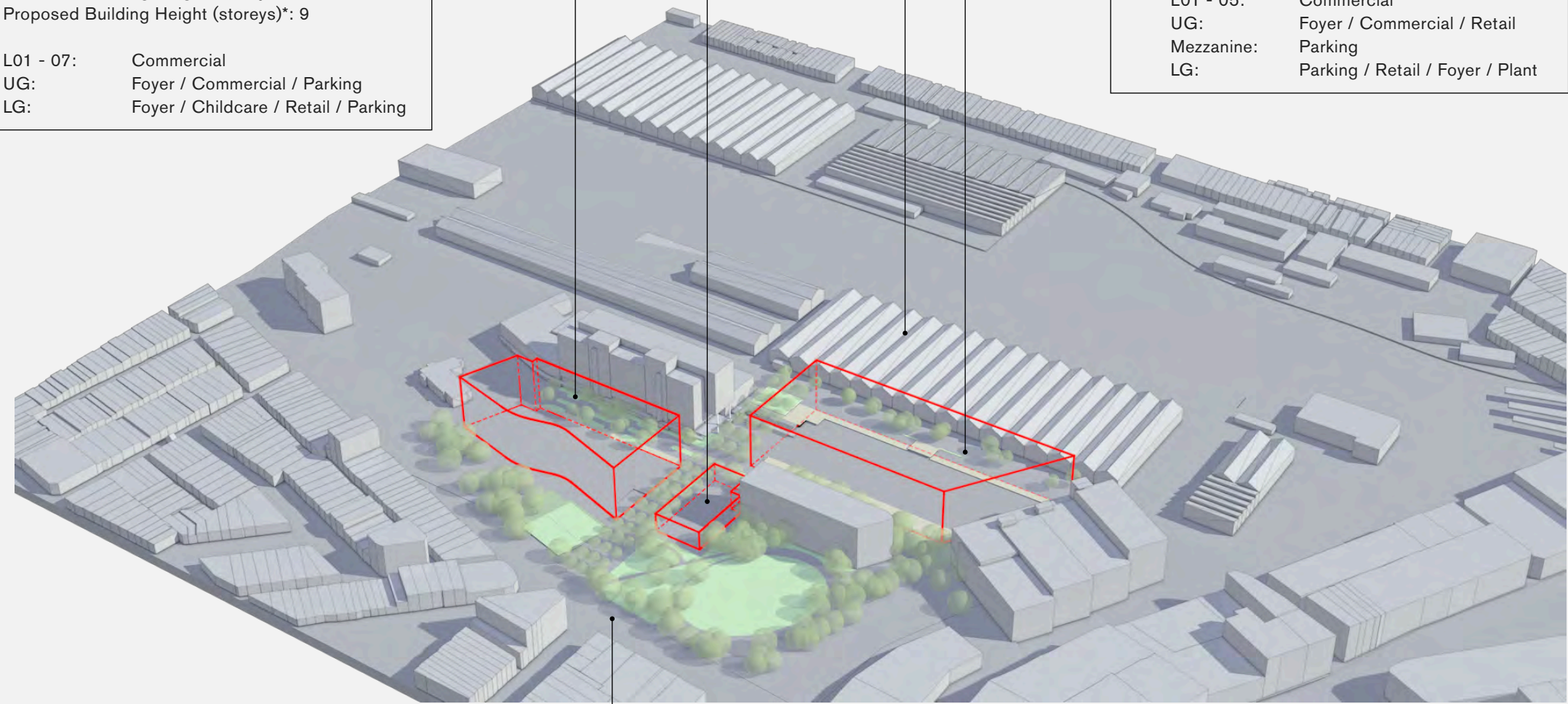
**Building 1**  
 Allowable Building Height (storeys)\*: 10  
 Proposed Building Height (storeys)\*: 9

L01 - 07: Commercial  
 UG: Foyer / Commercial / Parking  
 LG: Foyer / Childcare / Retail / Parking

existing Locomotive Shed

**Building 2**  
 Allowable Building Height (storeys)\*: 9  
 Proposed Building Height (storeys)\*: 8

L01 - 05: Commercial  
 UG: Foyer / Commercial / Retail  
 Mezzanine: Parking  
 LG: Parking / Retail / Foyer / Plant



Henderson Road

proposed building envelope diagram

\* Maximum Building Height (storeys):  
 as per State Environmental Planning Policy (Major Development) 2005  
 Redfern-Waterloo Authority Sites— Height of Buildings Map



location diagram