



Sancrox Quarry Expansion Project

Community Information Session

Monday 10 February 2020

Bayside Ballroom
Rydges Hotel
1 Hay Street
Port Macquarie NSW 2444

Agenda and Welcome

- | | |
|----------------|--|
| 6:00 – 6:15 pm | <ul style="list-style-type: none">• Welcome and introductions• House keeping |
| 6:15 – 6:40 pm | <ul style="list-style-type: none">• Assessment process and next steps• Project overview• Submissions summary |
| 6:40 – 7:55 pm | <ul style="list-style-type: none">• Open floor forum |
| 7:55 – 8:00 pm | <ul style="list-style-type: none">• Wrap up and concluding comments |

Welcome and Introduction

- Acknowledgement of Country
- Introductions
 - ✓ Alison Crocker (Communications)
 - ✓ Matthew Sprott, Colin Phillips and Melissa Anderson (Resource Assessments)
- Amenities & Safety

Meeting principles

- Everyone gets a chance to participate
- All speakers have the right to express their views
- Be respectful of others and please do not interject
- The Department will be taking notes of matters raised tonight to ensure they are captured and reflected in our assessment process

The purpose of today

What will be covered today

- The Department is here to listen to the community
- We want to understand your views and what the proposal means to you
- The Department will provide guidance on the assessment process
- The Department take your views onboard and ensure they are considered in the assessment process



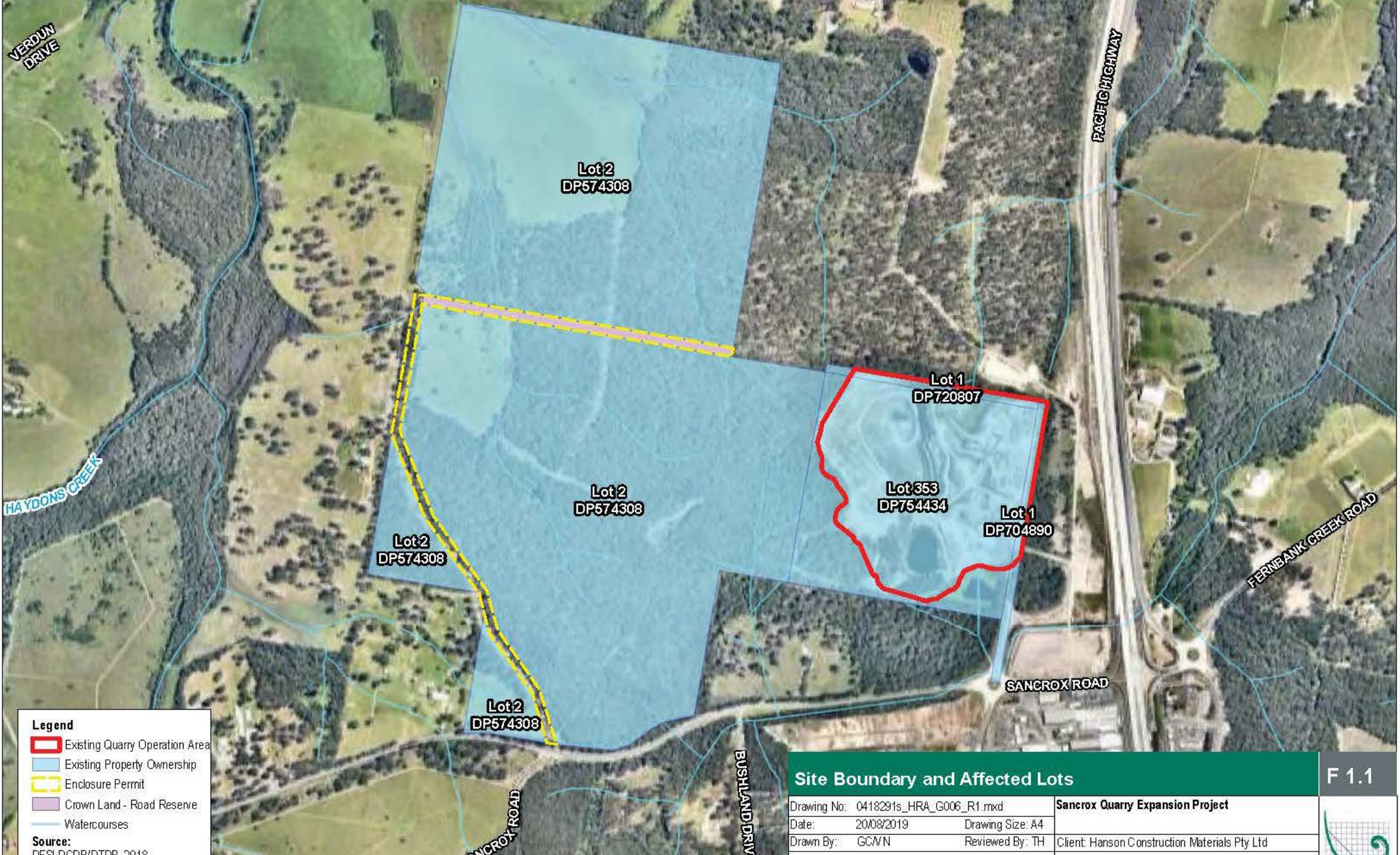
What won't be covered today

- This forum is not a debate between speakers - it is an opportunity for all individuals to express their views
- The Department will not be discussing the relative merits of the proposal, assessment outcomes or how certain matters must be addressed
- The Department will listen to all views, but will not be debating government policy

Overview of the proposal

The Sancrox Quarry Expansion Project involves:

- expanding the previous quarry extraction area to allow quarrying operations to continue for a further 30 years;
- increasing the extraction limit to 750,000 tonnes per annum;
- amending operational hours to 24 hours a day 7 days a week;
- clearing approximately 43 hectares of native vegetation;
- on-site infrastructure upgrades including a new concrete batching plant, recycling facility and asphalt production plant;
- transporting quarry products to market via public roads; and
- progressive rehabilitation of the site.



Legend

- Existing Quarry Operation Area
- Existing Property Ownership
- Enclosure Permit
- Crown Land - Road Reserve
- Watercourses

Source:
DESIGN/CDR/DTOR 2018

Site Boundary and Affected Lots

Drawing No: 0418291s_HRA_G006_R1.mxd

Date: 20/08/2019

Drawn By: GCM/N

Drawing Size: A4

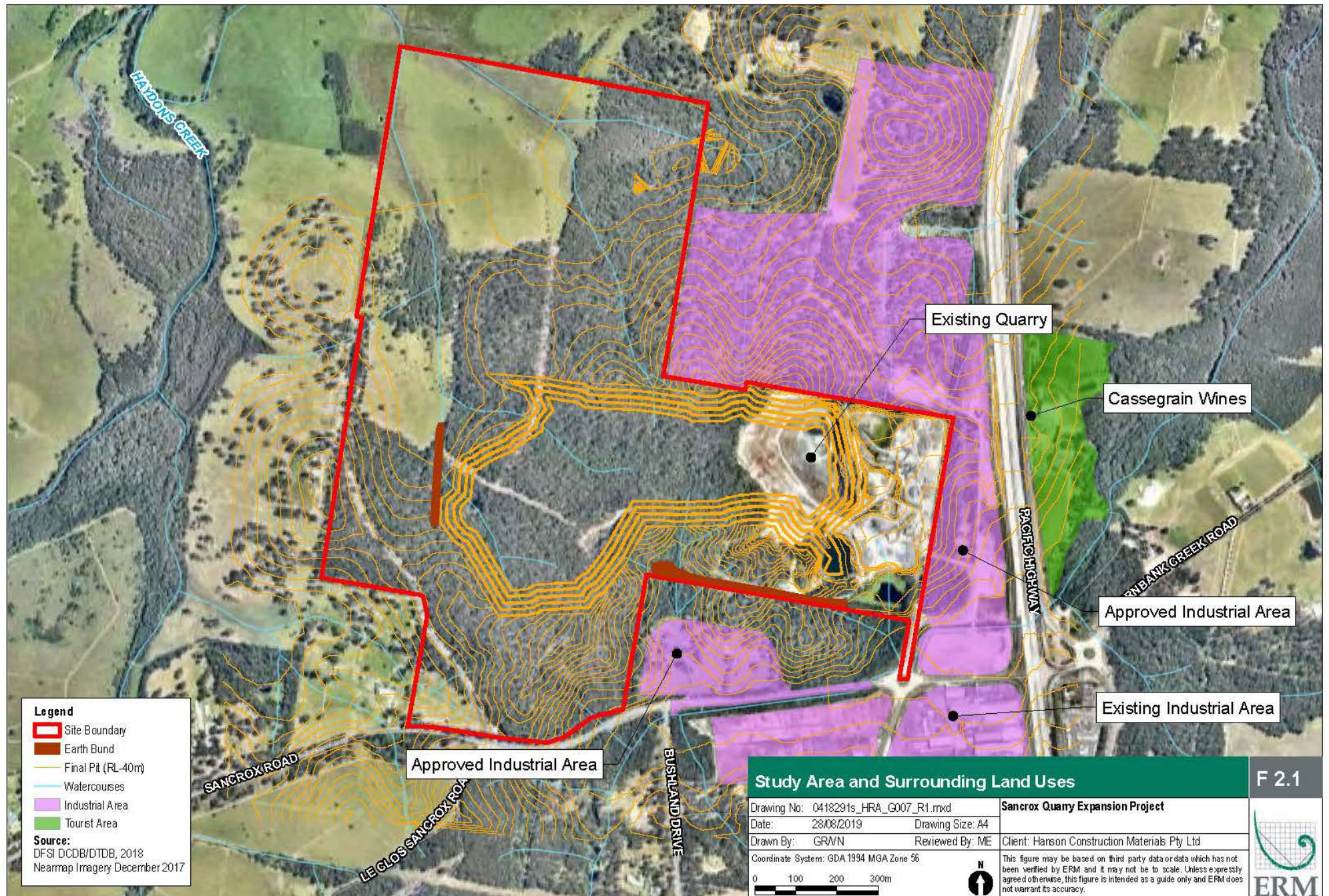
Reviewed By: TH

Sancrox Quarry Expansion Project

Client: Hanson Construction Materials Pty Ltd

F 1.1

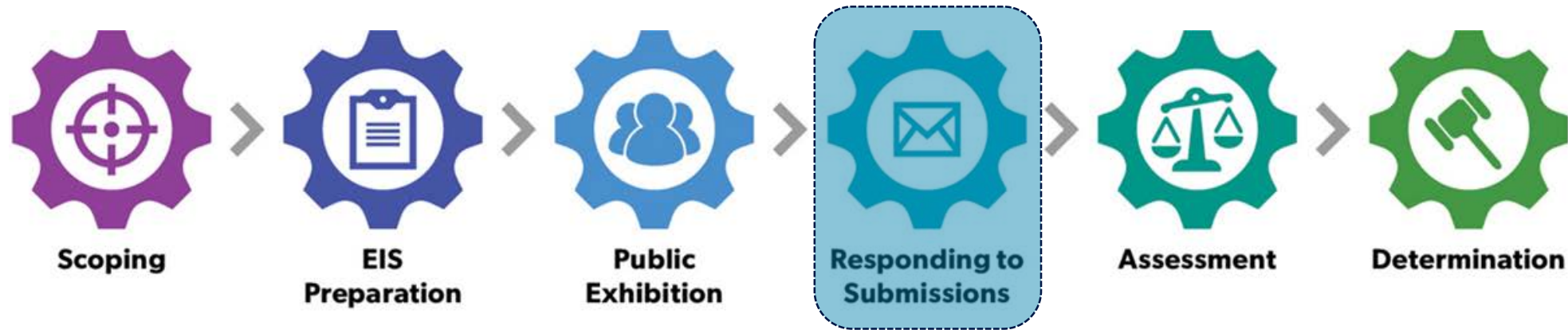




Why is the Department assessing the project?

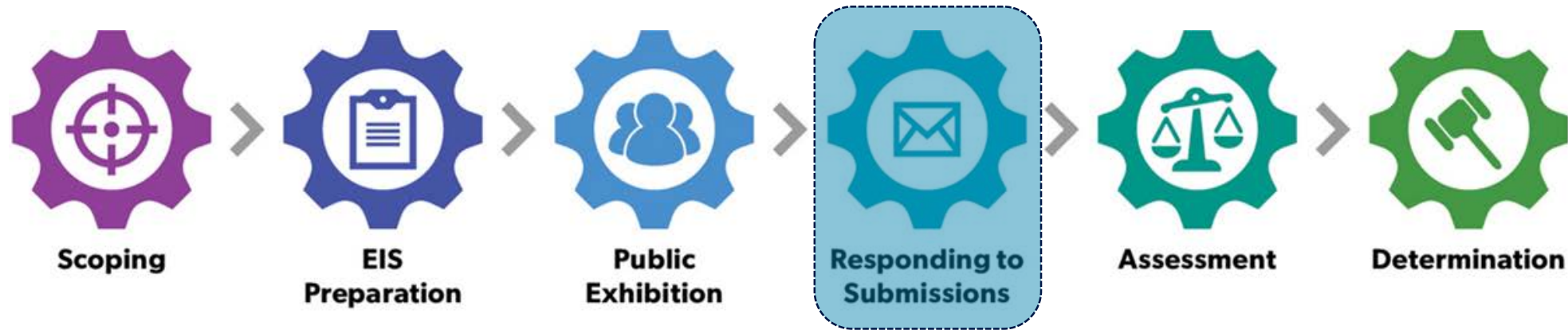
- The Department of Planning, Industry and Environment is responsible for assessing State significant development (SSD) proposals
- Quarries are classified as State significant development where they:
 - Extract more than 500,000 tonnes of material per year; or
 - Extract from a total resource of more than 5 million tonnes; or
 - Extract from an environmentally significant area.
- The proposed Sancrox Quarry Expansion Project meets these criteria and therefore requires a new development consent to proceed

What's happened so far?



- The Department issued Secretary's Environmental Assessment Requirements in October 2015 and revised SEARs in September 2017
- Hansen prepared its Development Application and Environmental Impact Statement (EIS)
- The EIS was exhibited for 43 days from 30 October to 11 December 2019

What's happened so far?



- The Department received over 250 community submissions along with expert advice from key government agencies and Council
- The Department has requested that Hanson prepare a Submissions Report responding to issues raised in submissions and agency advice

Community Submissions and Agency Advice

- During the public exhibition period the Department received over 250 submissions from members of the community, comprising 254 objections, 5 comments and 1 support.
- The Department received expert advice from 8 government agencies, including Port Macquarie-Hastings Council
- Hansen will need to respond to issues raised in submissions and by agencies, as well as responding to any further requests for additional information that the Department may require.

What you have said so far – key issues

- The adequacy of information within the **EIS** and **justification** of the project (particularly the extended operational life)
- **Biodiversity impacts** including native vegetation clearance, impacts on potential koala habitat and ecological corridors
- **Compatibility with surrounding land uses**, including rural residential properties, proposed residential subdivisions and nearby industrial areas
- **Blasting impacts** on surrounding properties including management of flyrock and vibration

What you have said so far – key issues

- **Noise, Air Quality and Visual impacts** on surrounding properties
- **Traffic and transport impacts**
- **Water and soil impacts**
- **Social impacts**, including from extended operational hours and in relation to the extent of community consultation
- **Bushfire Management** and
- **Quarry Closure and Rehabilitation**

What's happens next?



- The Department will complete its assessment of the project in accordance with Government legislation, policies and guidelines
- The Department will consider all submissions made on the proposal, the information contained in the EIS and Submissions Report and the expert advice of government agencies.
- The Department will produce an assessment report and refer the project to the Independent Planning Commission for determination.

Questions about the assessment process

- Before we open to the floor to hear your views on the project are there any questions about the assessment process?

Open Floor Forum

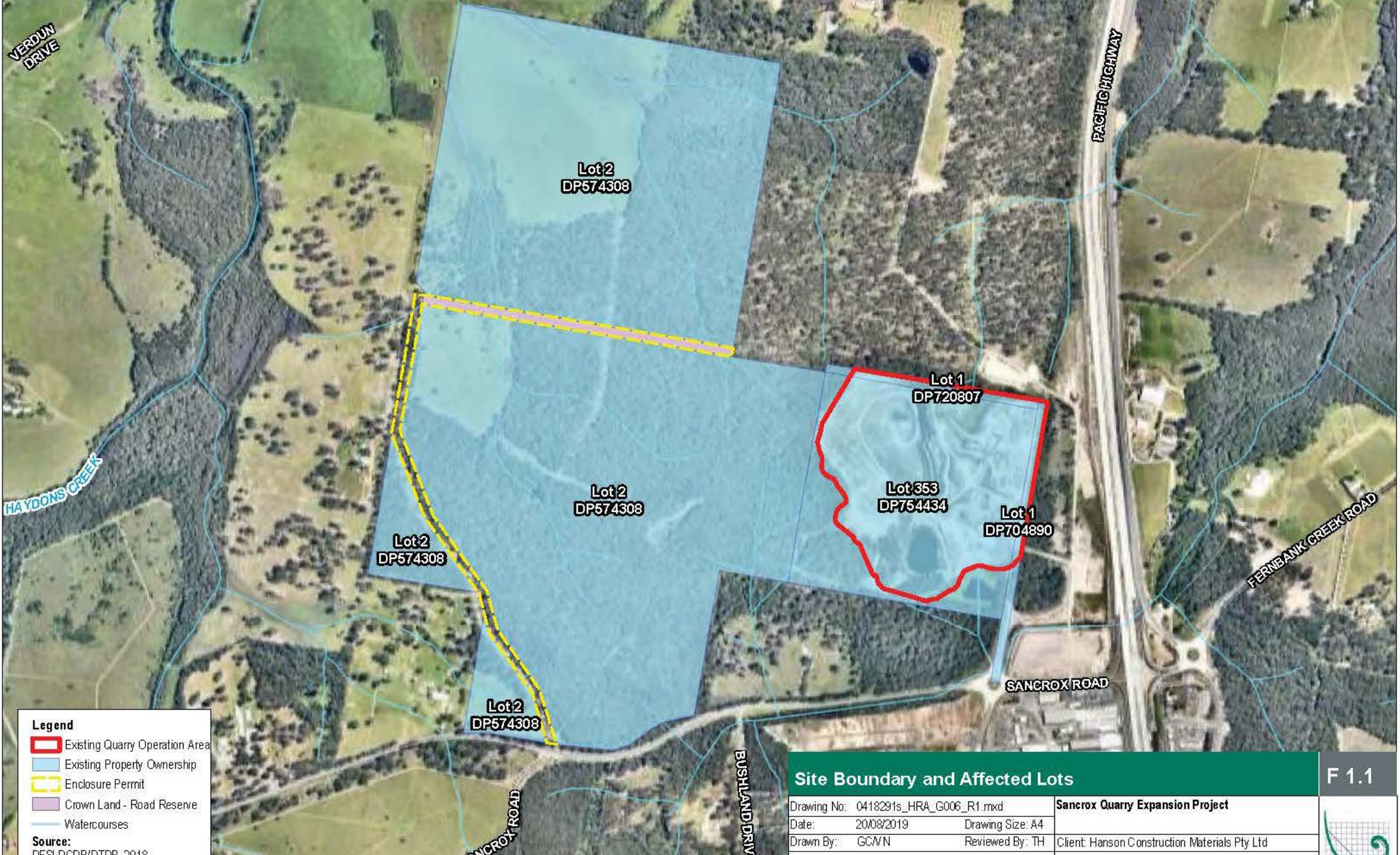
What will be covered today

- The Department is here to listen to the community
- We want to understand your views and what the proposal means to you
- The Department will provide guidance on the assessment process
- The Department take your views onboard and ensure they are considered in the assessment process



What won't be covered today

- This forum is not a debate between speakers - it is an opportunity for all individuals to express their views
- The Department will not be discussing the relative merits of the proposal, assessment outcomes or how certain matters must be addressed
- The Department will listen to all views, but will not be debating government policy



Legend

- Existing Quarry Operation Area
- Existing Property Ownership
- Enclosure Permit
- Crown Land - Road Reserve
- Watercourses

Source:
DESIGN/CDR/2018

Site Boundary and Affected Lots

Drawing No: 0418291s_HRA_G006_R1.mxd

Date: 20/08/2019

Drawn By: GCM/N

Drawing Size: A4

Reviewed By: TH

Sancrox Quarry Expansion Project

Client: Hanson Construction Materials Pty Ltd

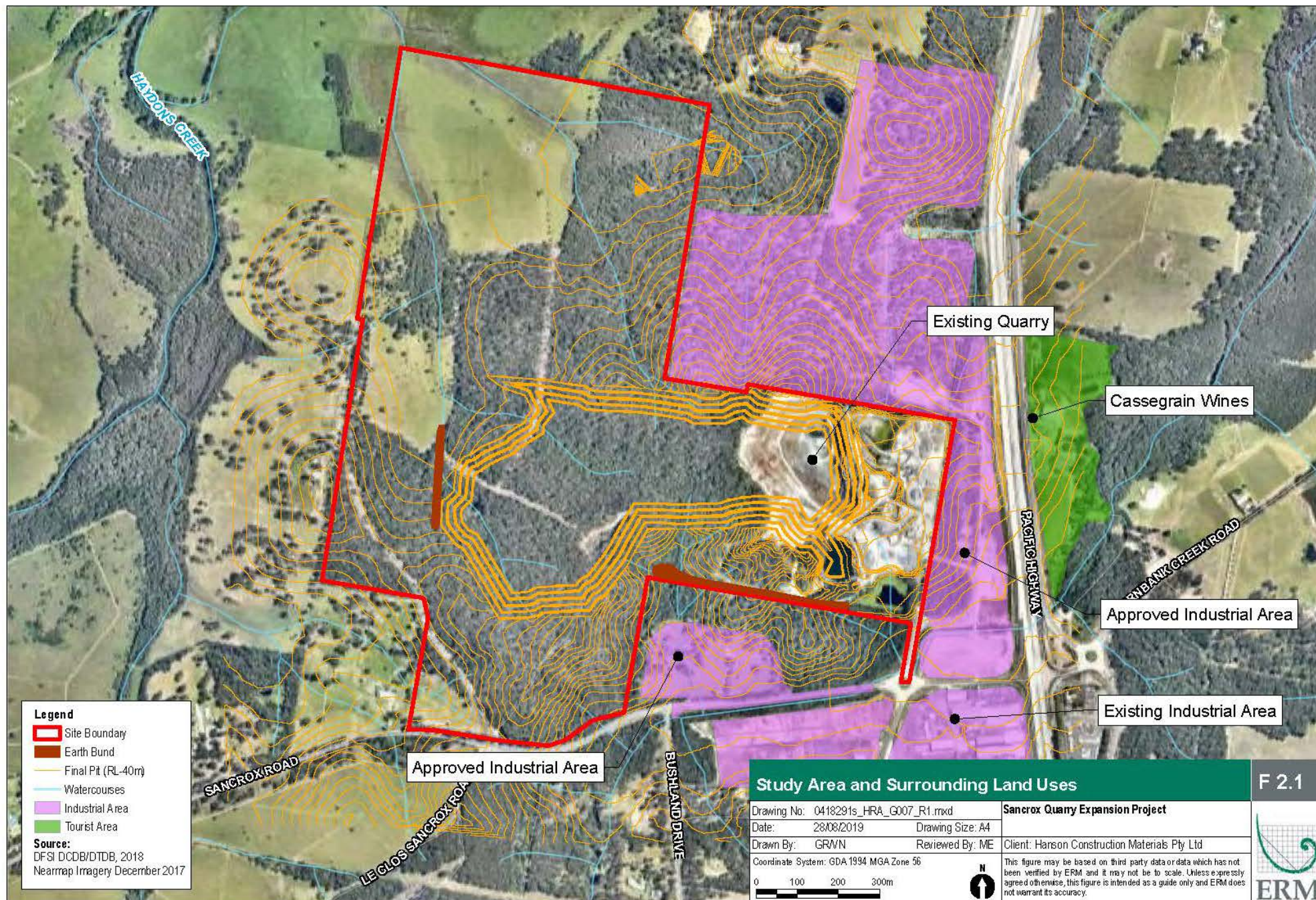
F 1.1

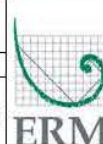



Legend

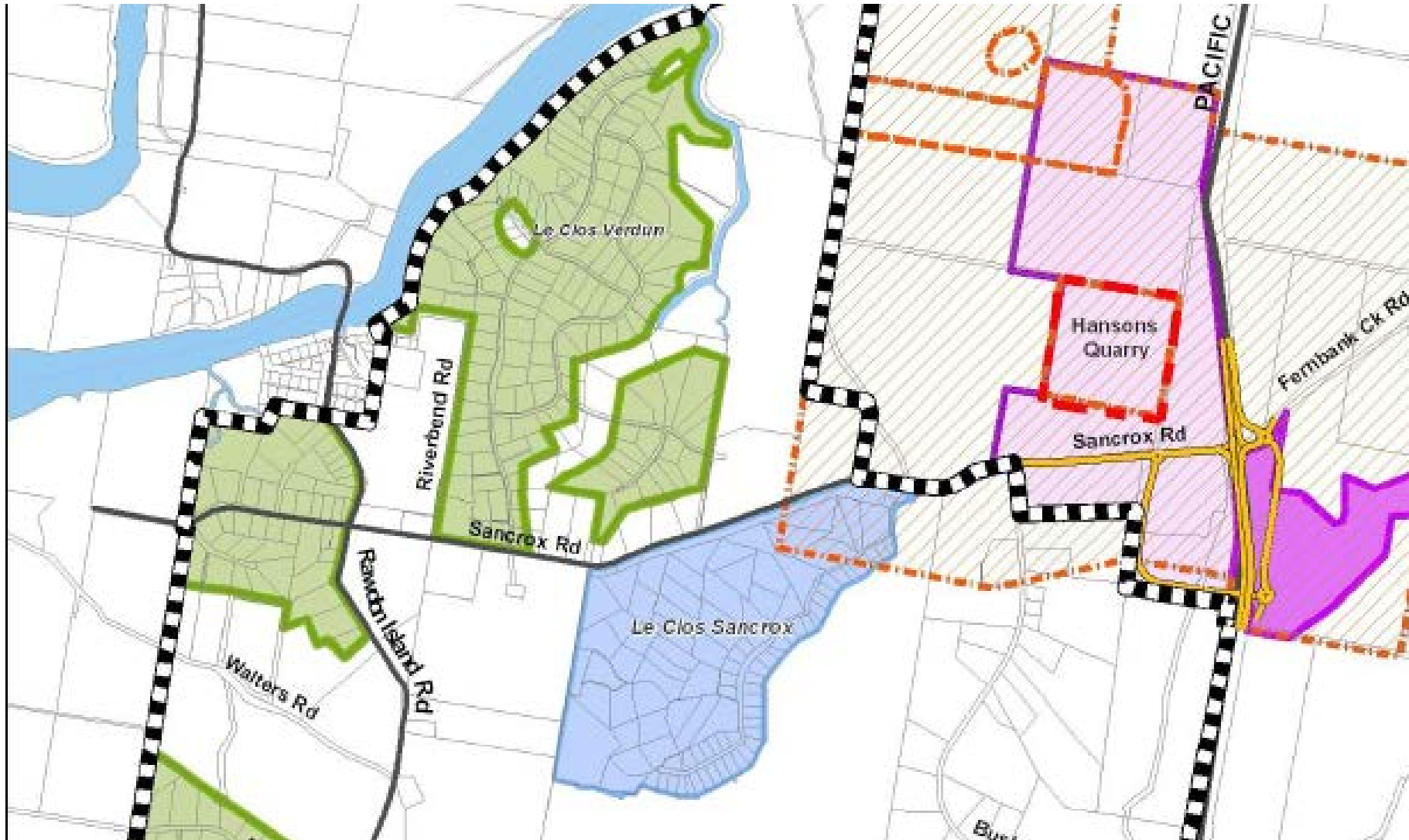
- Site Boundary
- Earth Bund
- Final Pit (RL-40m)
- Watercourses
- Industrial Area
- Tourist Area

Source:
DFSI DCDB/DTDB, 2018
Nearmap Imagery December 2017



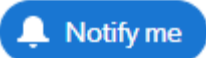
Study Area and Surrounding Land Uses		F 2.1
Drawing No: 0418291s_HRA_G007_R1.mxd	Sancrox Quarry Expansion Project	
Date: 28/08/2019	Drawing Size: A4	Client: Hanson Construction Materials Pty Ltd
Drawn By: GRWN	Reviewed By: ME	
Coordinate System: GDA 1994 MGA Zone 56		<p>This figure may be based on third party data or data which has not been verified by ERM and it may not be to scale. Unless expressly agreed otherwise, this figure is intended as a guide only and ERM does not warrant its accuracy.</p> 
<p>0 100 200 300m</p> <p>N</p> 		

Surrounding Proposed Residential Estates
(source: Draft *Greater Sancrox Structure Plan 2015*)



Reminders & Concluding Remarks

Next Steps:

- Hansen has been asked to respond to submissions
- The Submissions Report will be made available on the website - you can sign up to be alerted when this happens 
- The Department will seek further expert advice from government agencies and complete its Assessment Report
- The Project will be referred to the Independent Planning Commission for determination

You can view and track the project on the Department's Major Projects website:

<https://www.planningportal.nsw.gov.au/major-projects/project/9946>



Major Projects Department of Planning, Industry and Environment NSW Planning Portal

NSW GOVERNMENT Major Projects Projects Assessment Community Services Help

Search by Project Name or ID

State Significant Development

Sancrox Quarry Expansion Project

The Sancrox Quarry Expansion Project will extend the life of Sancrox quarry by expanding the approved extraction boundary and increasing approved extraction limits.

Current Status: **Response to Submissions** Interact with the stages for their names ?

Progress bar with 8 stages: 1-5 are completed (checkmarks), 6 is current (filled circle), 7-8 are pending (empty circles).

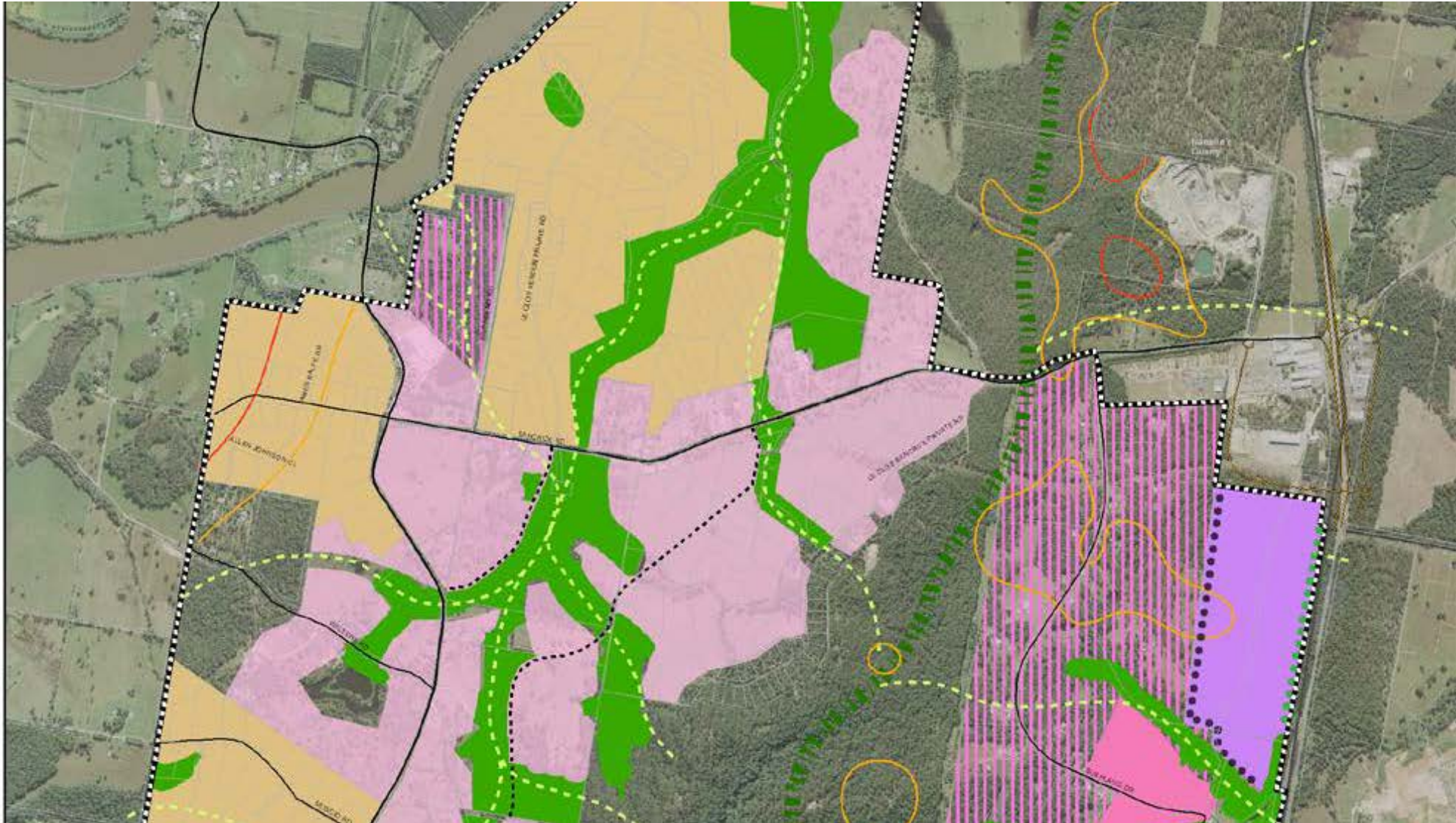
Want to stay updated on this project? [Notify me](#)

Thank you

- Thank you for coming – we appreciate the time you have taken to speak with us and value your input.
- If you have any further questions, please feel free contact the Department at: resource.assessments@planning.nsw.gov.au
- For more information about the Independent Planning Commission's processes, please see:
<https://www.ipcn.nsw.gov.au/our-processes>



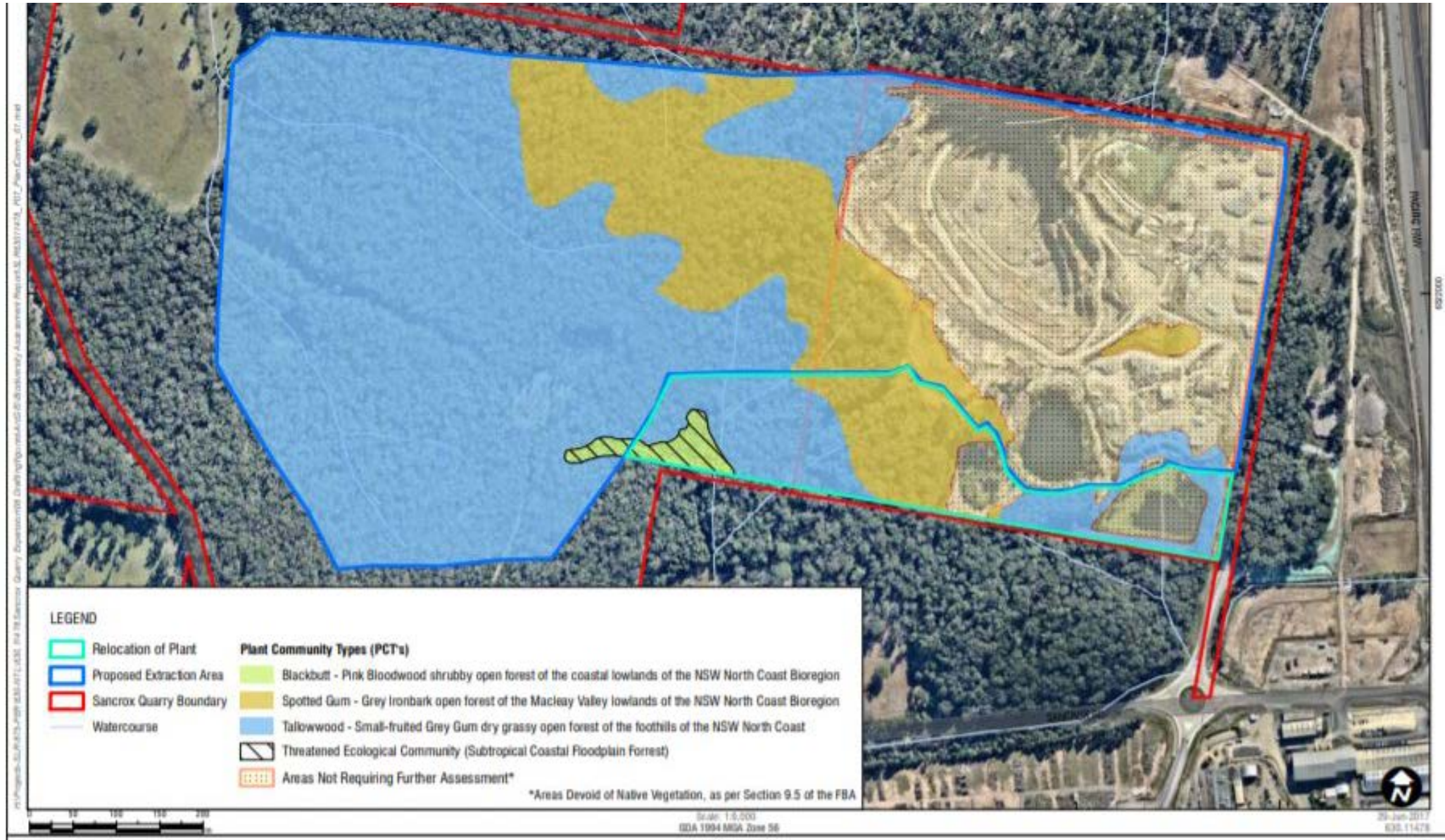
Sub-Regional Biodiversity Corridor
(source: *Draft Greater Sancrox Structure Plan 2015*)



Biodiversity Corridors (source: *Sancrox Environmental Impact Statement*)

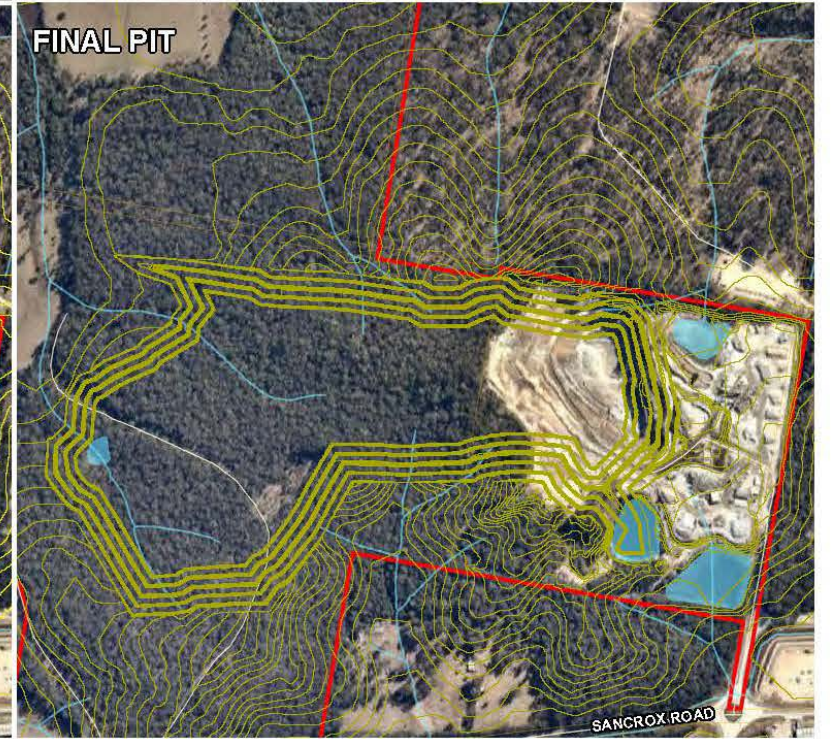
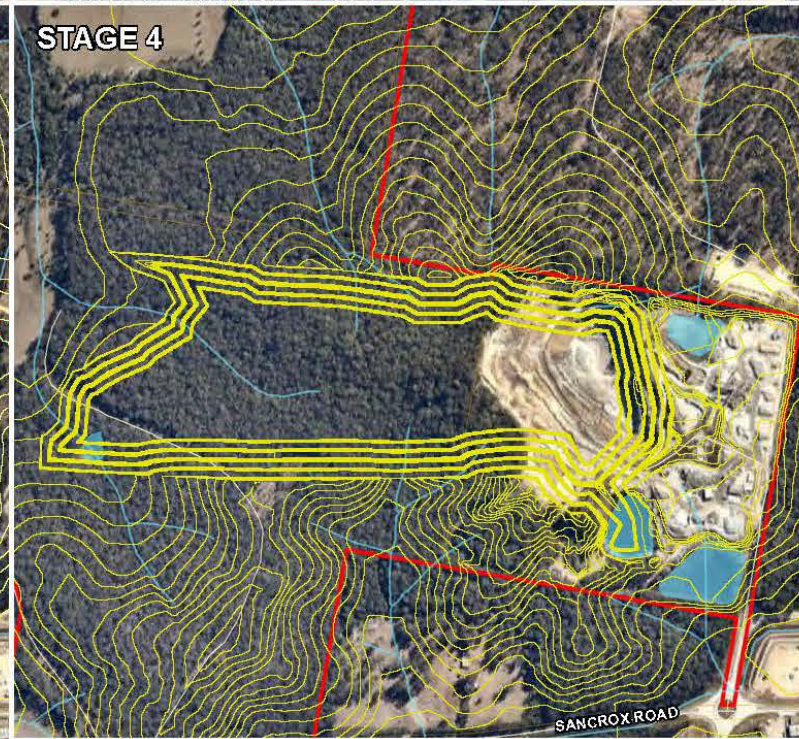
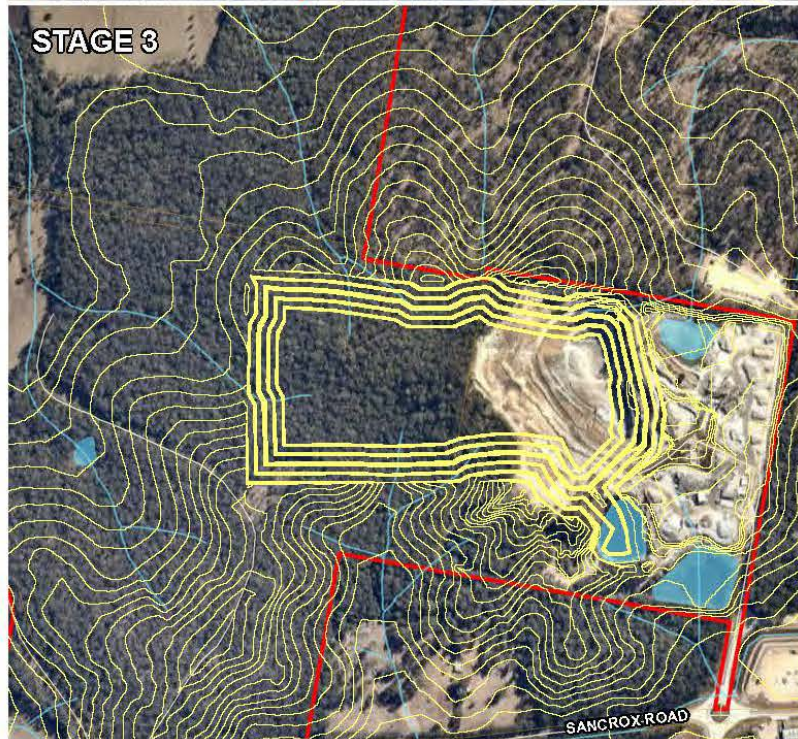
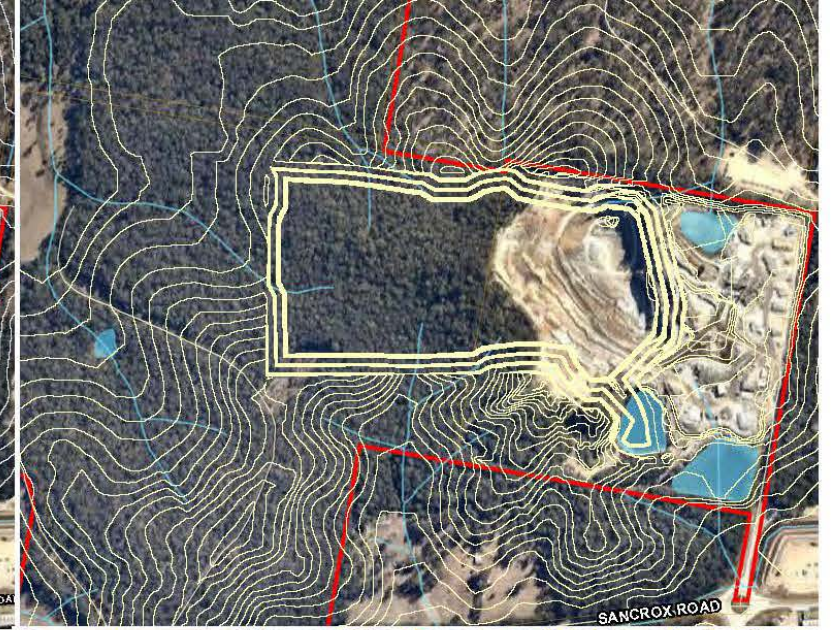


Plant Community Types (source: *Sancrox EIS – Annex C*)

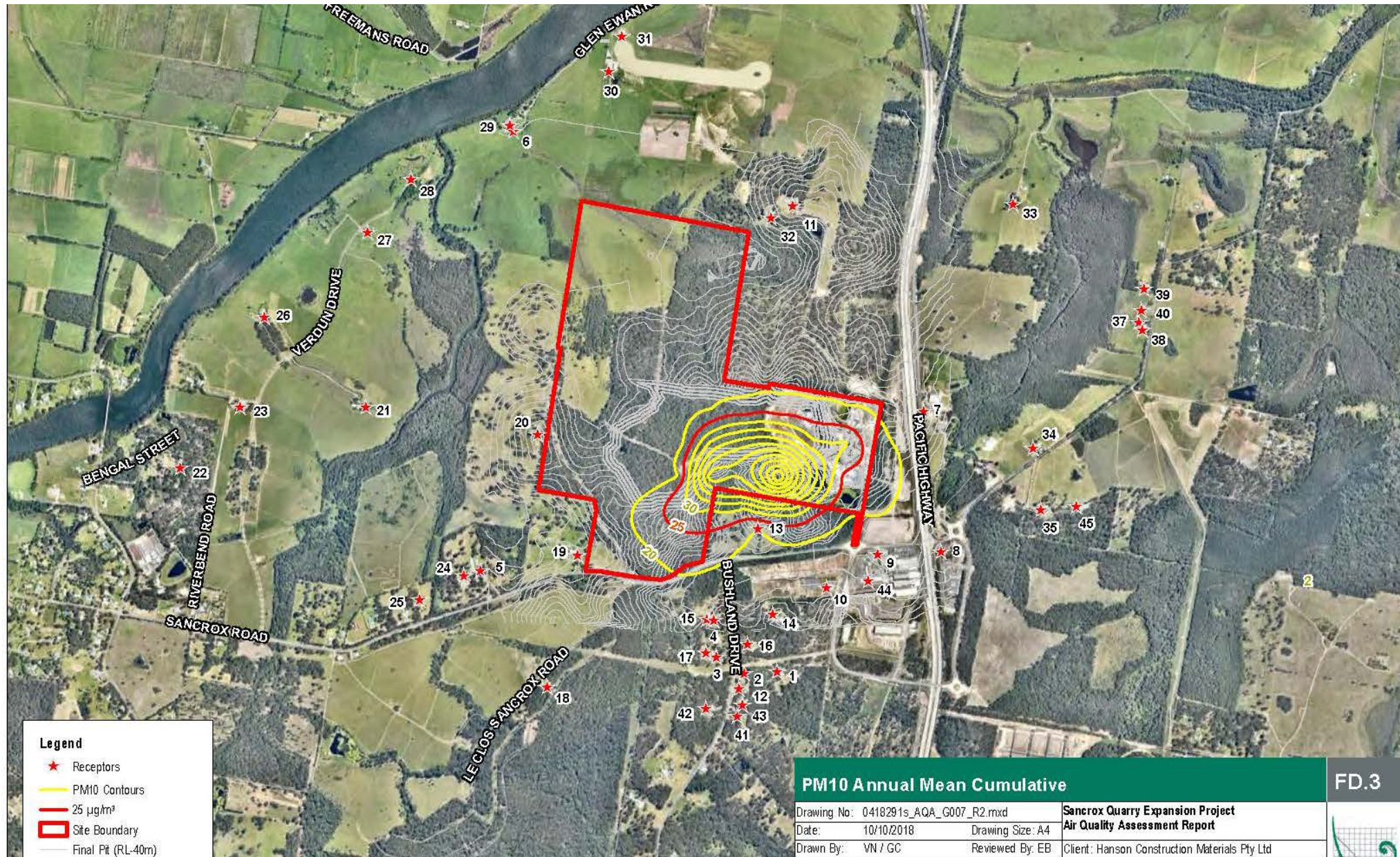


Proposed Site Layout





Air Quality – Annual Mean Cumulative PM₁₀



Port Macquarie Area (source: *North Coast Regional Plan 2036*)

Figure 8: Port Macquarie Regional City

