

Appendix C Architectural drawings

Prepared by HDR Rice Daubney Architects

January 2016

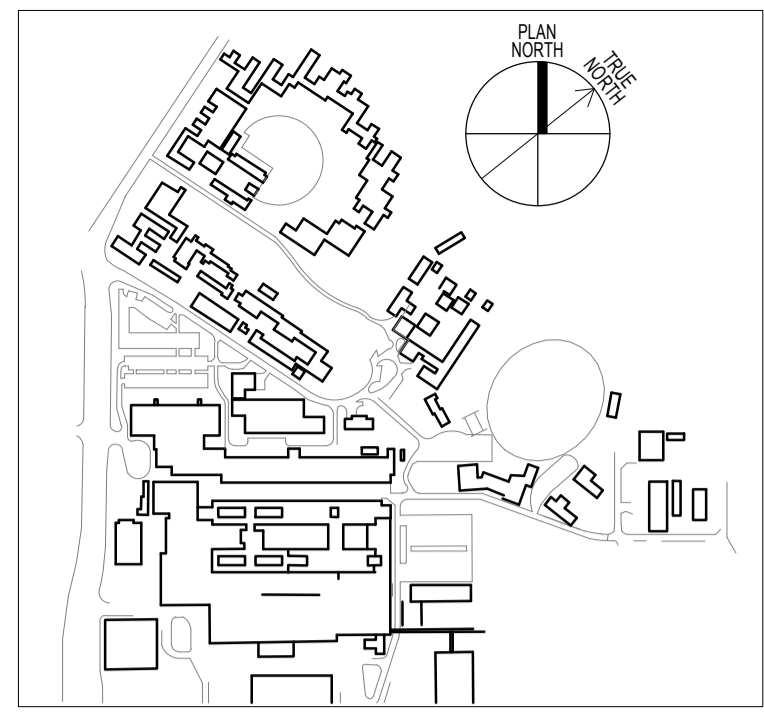
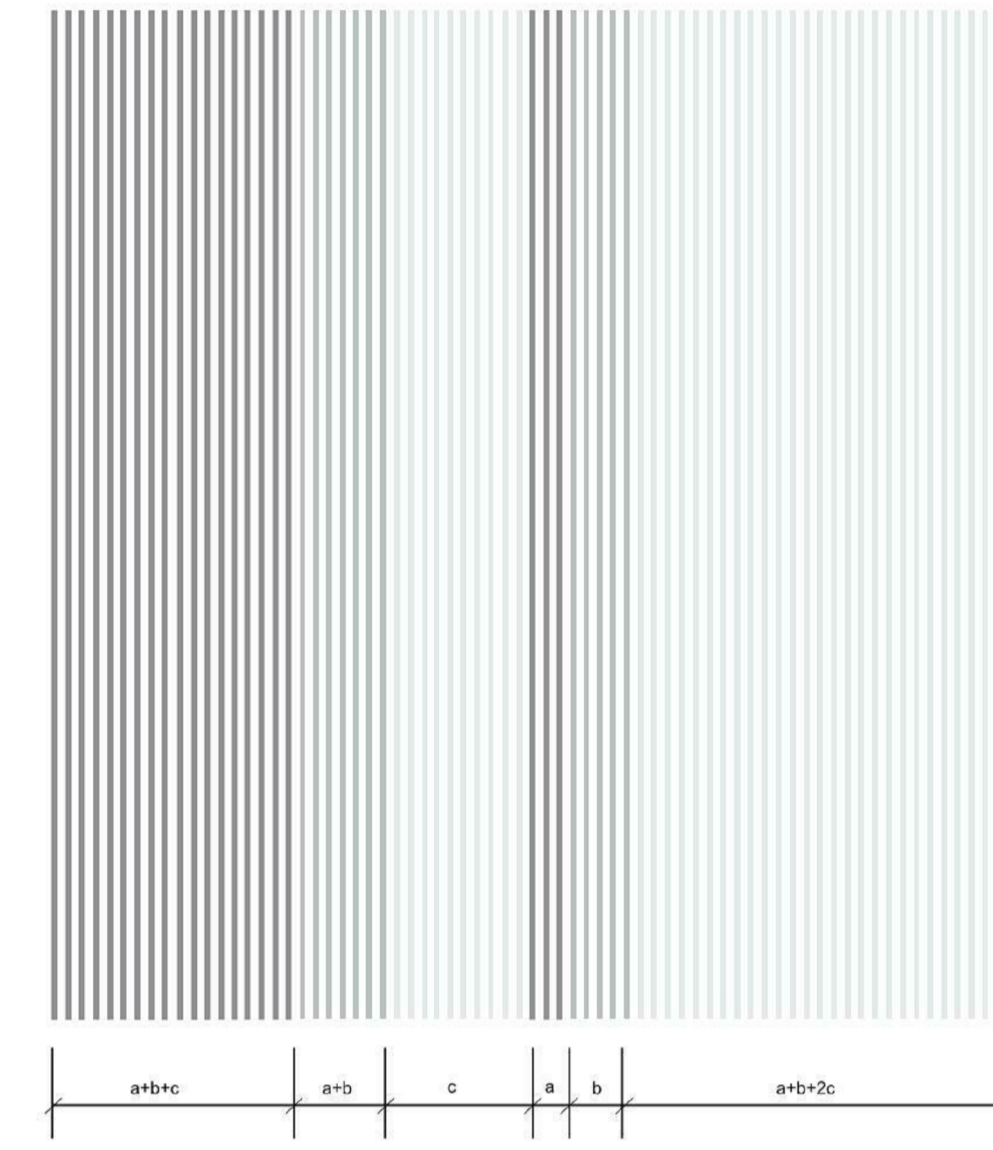
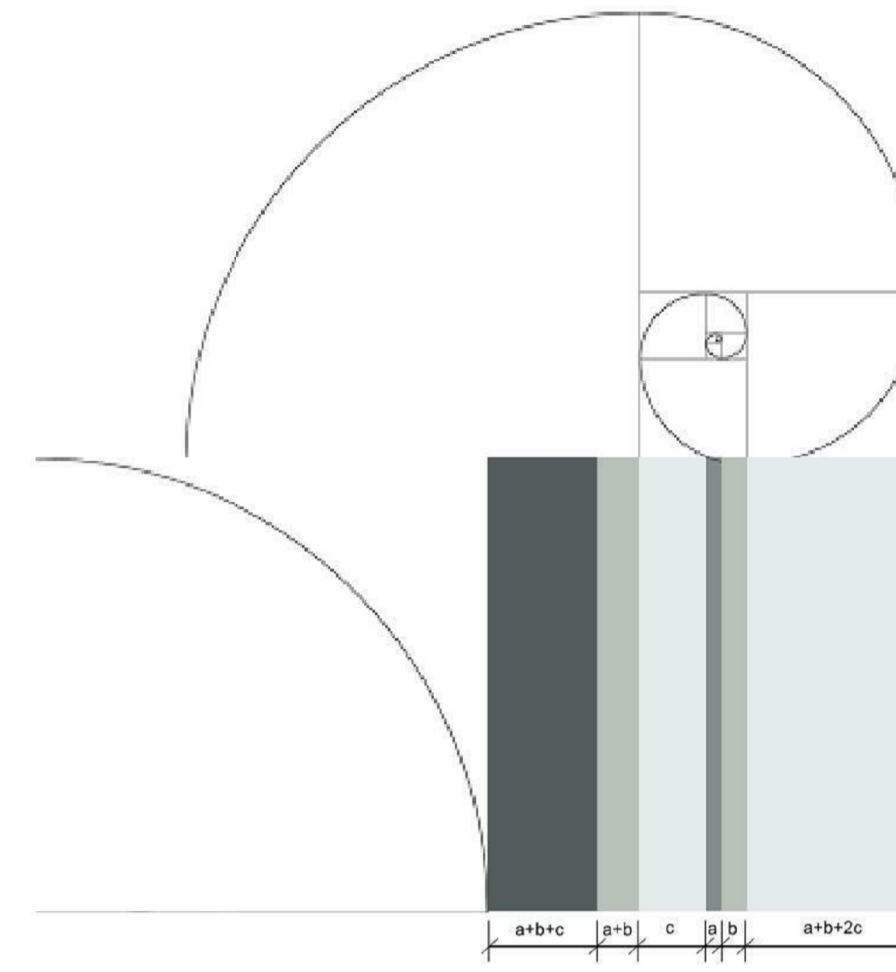
Secondary layer - Elemental

Using the proportions of the Fibonacci spiral the lower, middle and upper segment have been divided into a randomised bar code pattern which further breaks down the apparent scale of the primary layer.



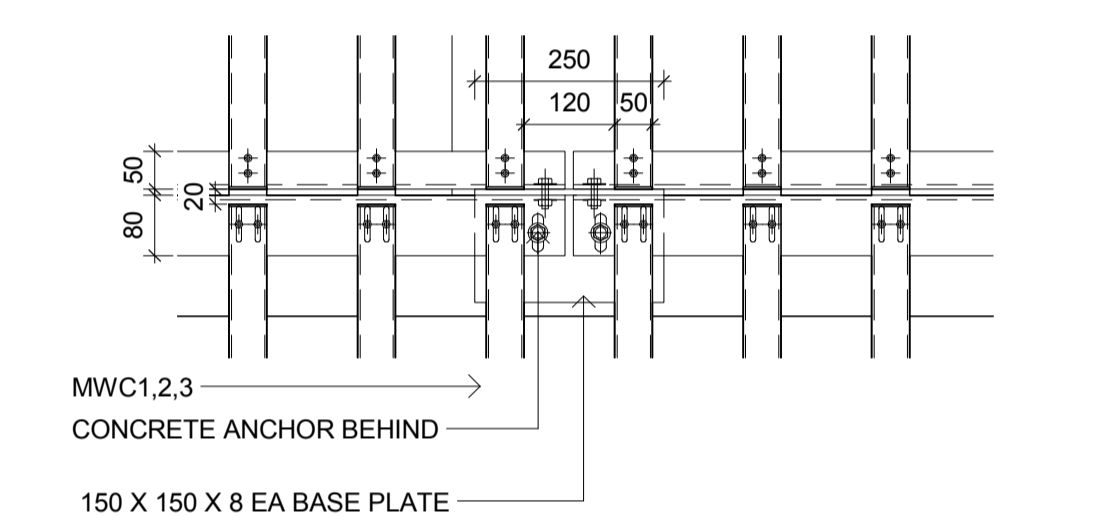
Tertiary Layer - Detail

The Fibonacci spiral is again used in the apportioning of the vertical elements. Using 50x100mm within these bounds set up by the Fibonacci spiral the fins create a refined detail to the car park mass.

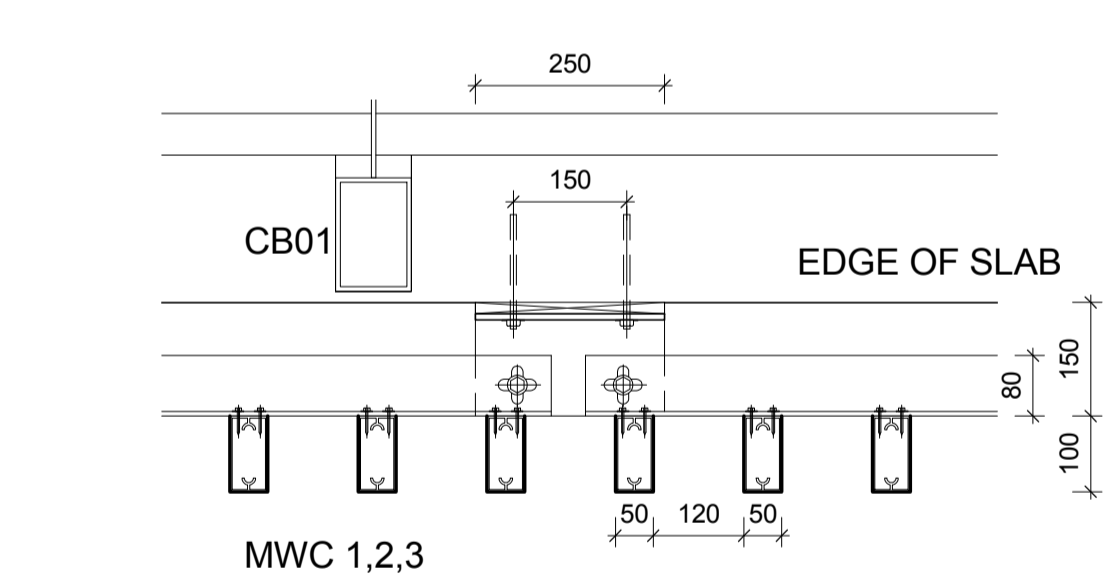


THIS DOCUMENT IS THE COPYRIGHT OF THE HDR GROUP (NSW) PTY LTD. ALL THE INFORMATION ILLUSTRATED ON THIS DOCUMENT IS TO BE CHECKED AND VERIFIED ON SITE. IN THE EVENT OF DISCREPANCIES REFER TO ARCHITECT PRIOR TO COMMENCEMENT OF THE WORK. DO NOT SCALE DRAWINGS ELECTRONICALLY OR MANUALLY.

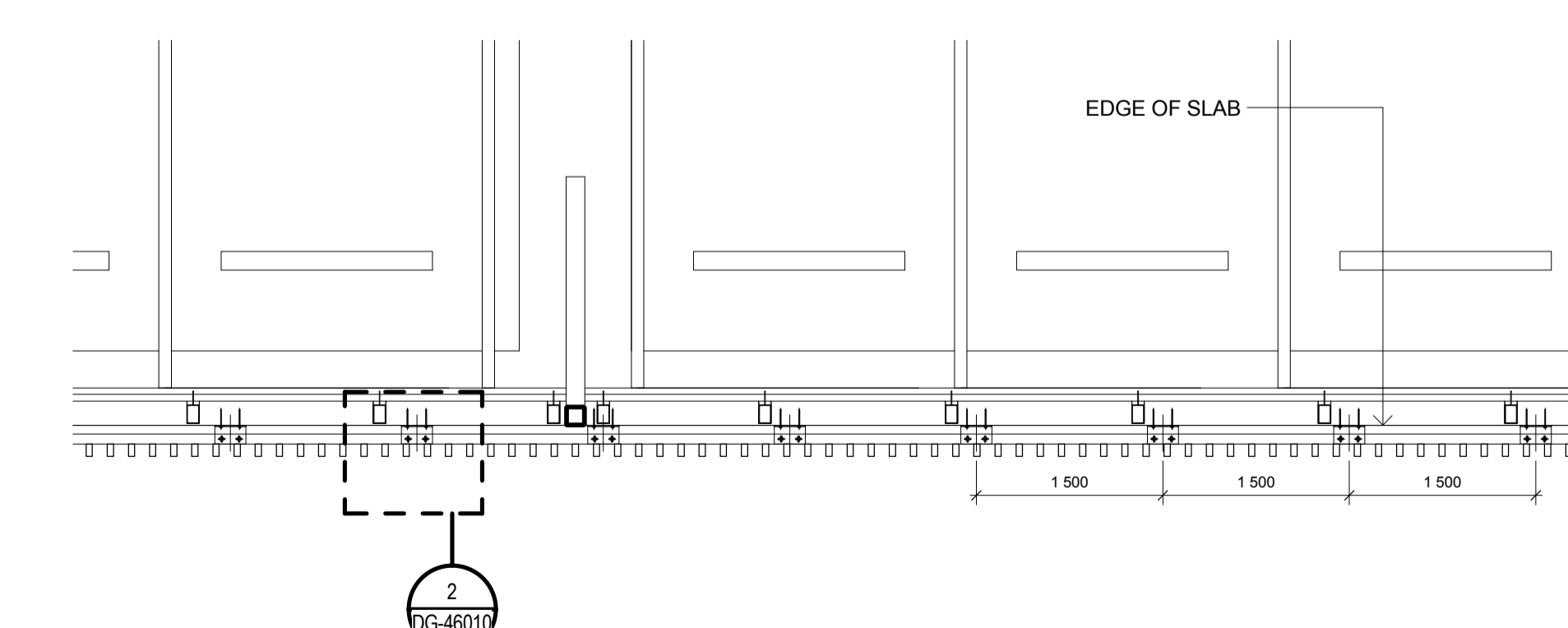
REV	DESCRIPTION	DRAWN	CHECK	DATE
1	TENDER	RT	TR	14/12/15



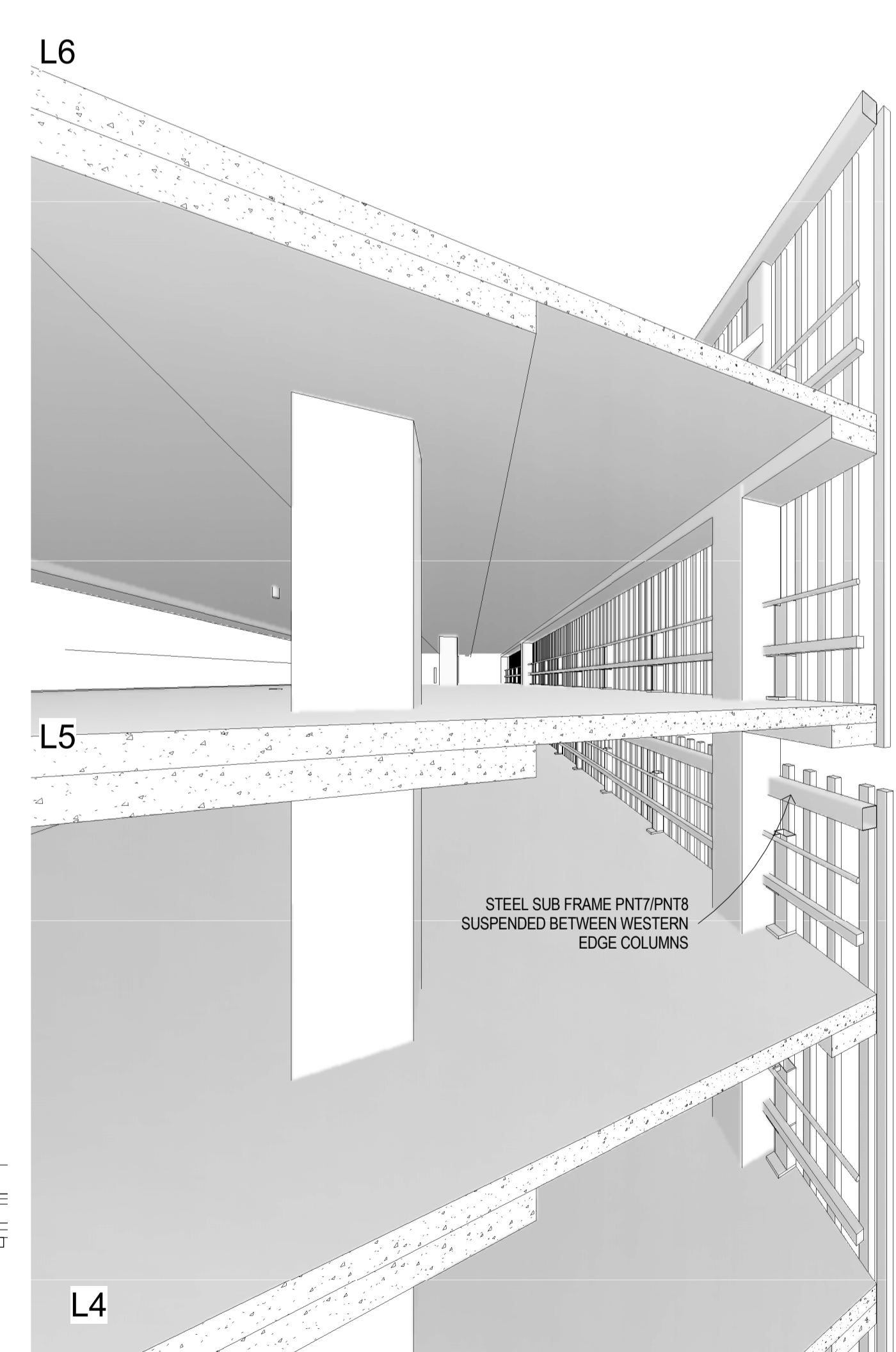
3 BLADES DETAIL ELEVATION TYPICAL
1:10



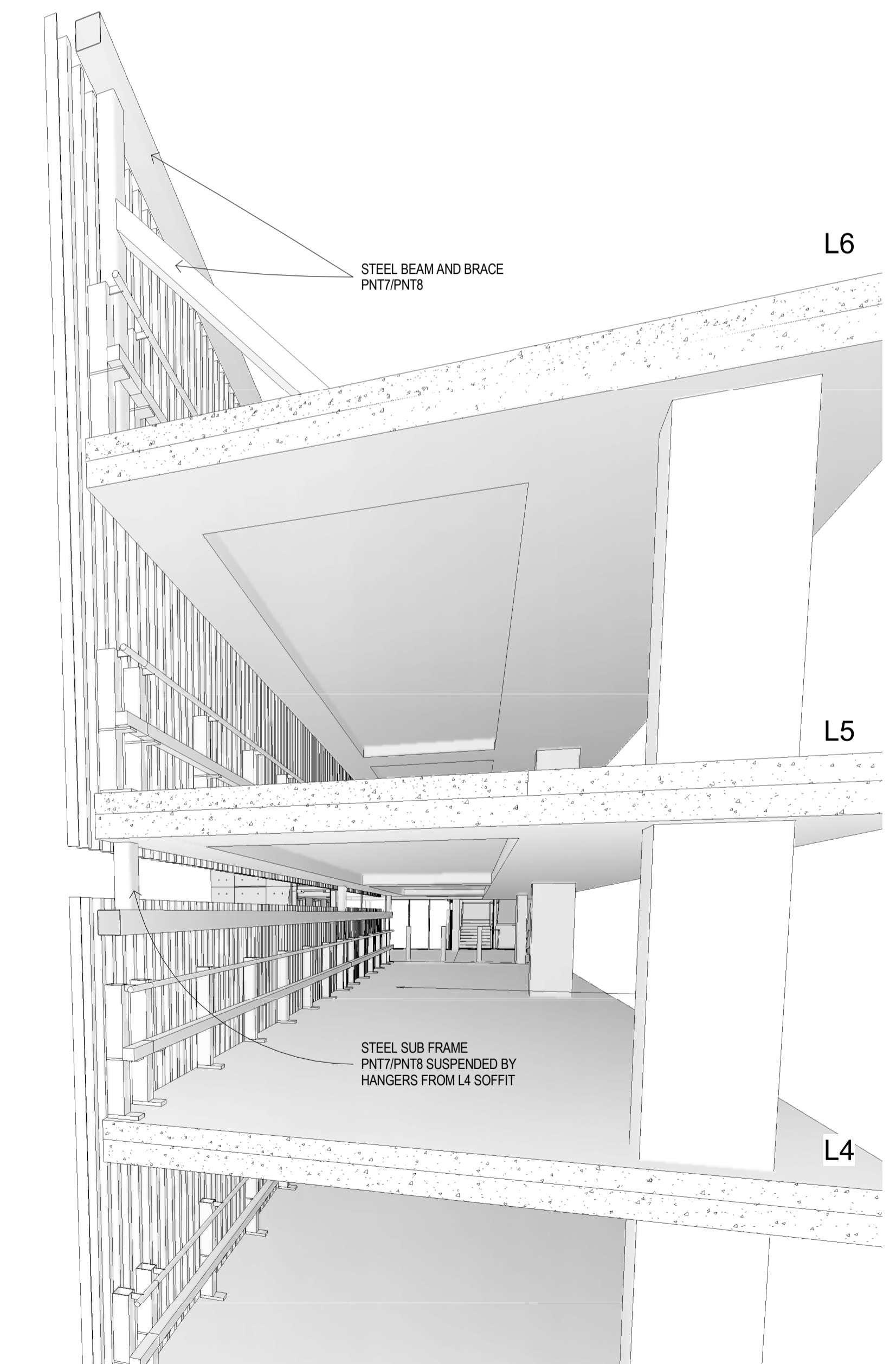
2 BLADES DETAIL PLAN TYPICAL
1:10



1 BLADE TYPICAL SETOUT PLAN
1:50



4 MWC WEST L4 BEAMS



5 MWC LEVEL 4 HANGERS TYPICAL

ISSUE FOR TENDER
NOT FOR CONSTRUCTION

CLIENT:
NSW HEALTH
INFRASTRUCTURE



Level 6, 77 Pacific Highway
North Sydney NSW 2060

P: (02) 9978 5427
F: (02) 8904 1377
www.health.nsw.gov.au

PROJECT MANAGER:
PRICE WATERHOUSE
COOPERS



Darling Park
201 Sussex Street
Sydney NSW 2000

P: (02) 8266 2750
F: (02) 8266 2780
www.pwc.com.au

LEAD ARCHITECT:
HDR | RD + MSJ

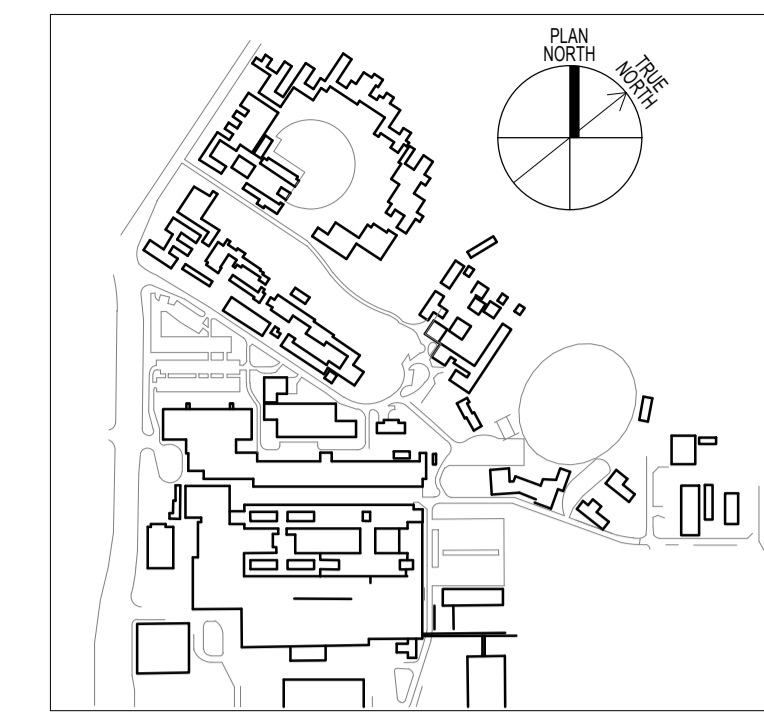
Lvl 1, 110 Walker Street
North Sydney NSW 2060

P: (02) 9956 2666
F: (02) 9959 3015
askhdr@hdrinc.com.au

WESTMEAD MULTI STOREY CARPARK
Cnr Institute Road and Darcy Road
Westmead NSW 2145
Westmead Redevelopment
Building health. Transforming lives.

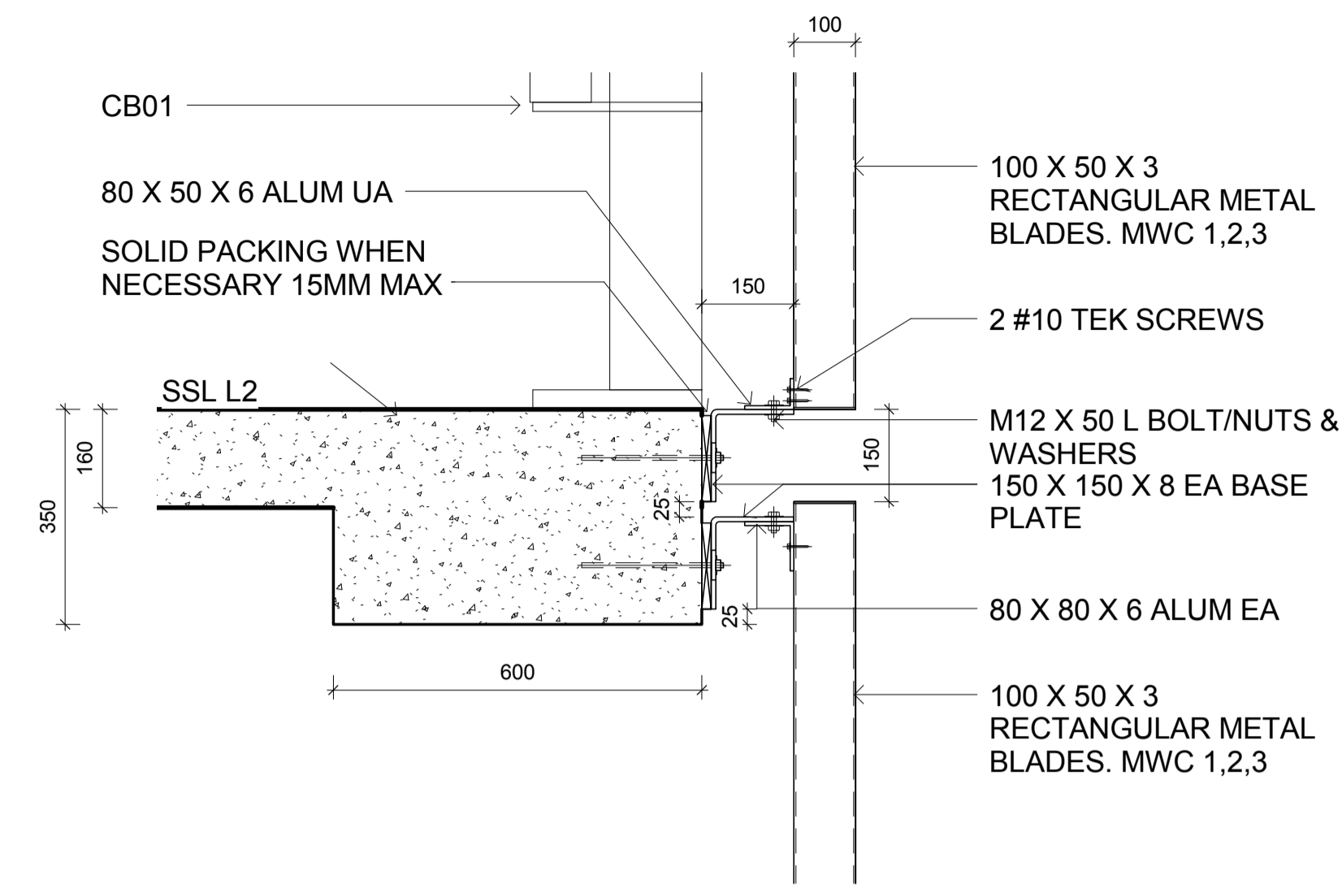
DRAWING TITLE:
FACADE BLADE DETAILS

SCALE:	DOCS NUMBER:	CHECKED:
As indicated	5335	TR
PROJECT NUMBER:	DRAWING NUMBER:	ISSUE:
232186	MSC-HDR-AR-DG-46010	

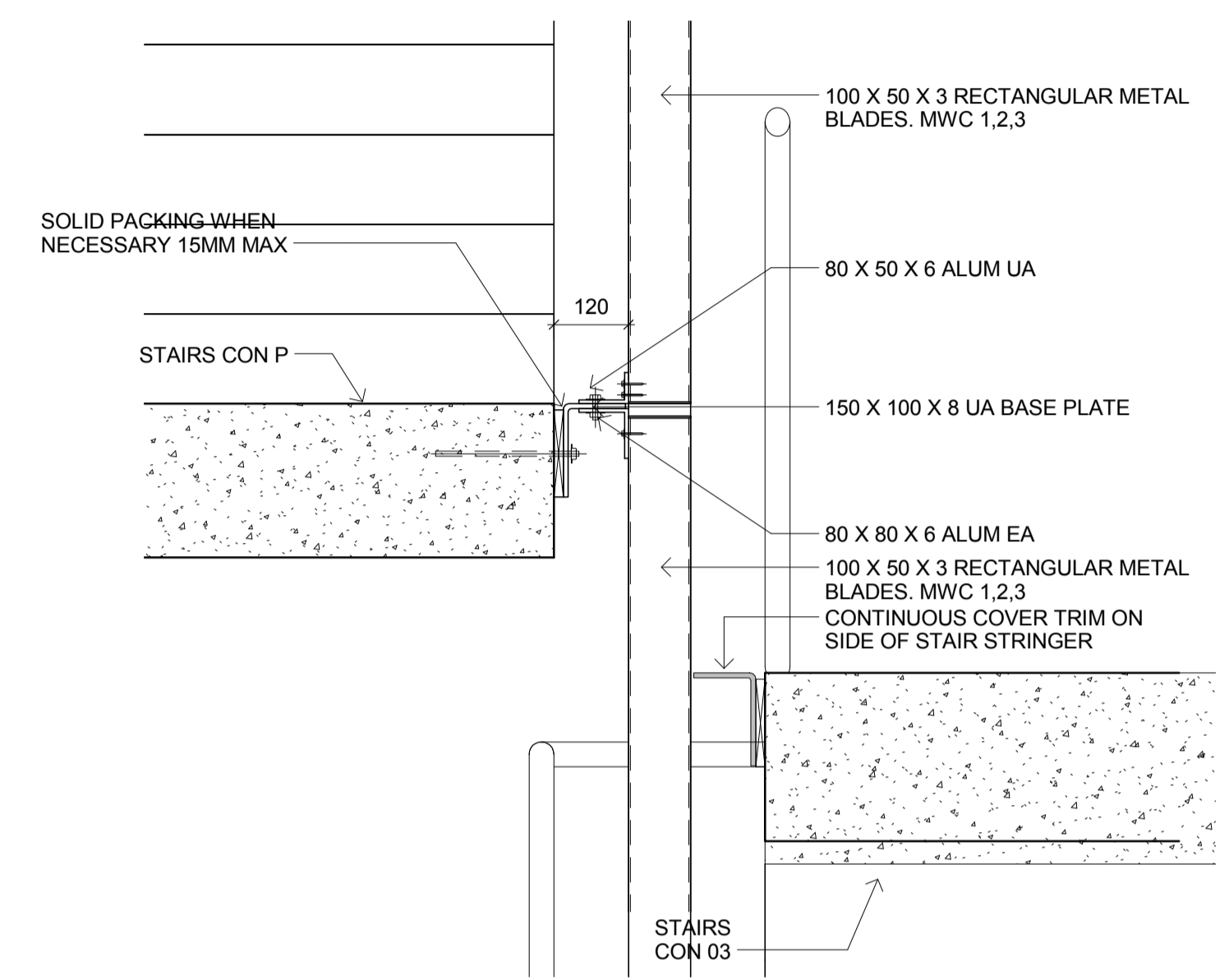


THIS DOCUMENT IS THE COPYRIGHT OF THE HOBBS GROUP (NSW) PTY LTD
 ALL THE INFORMATION ILLUSTRATED ON THIS DOCUMENT IS TO BE CHECKED AND VERIFIED ON SITE
 IN THE EVENT OF DISCREPANCIES REFER TO ARCHITECT PRIOR TO COMMENCEMENT OF THE WORK.
 DO NOT SCALE DRAWINGS ELECTRONICALLY OR MANUALLY.

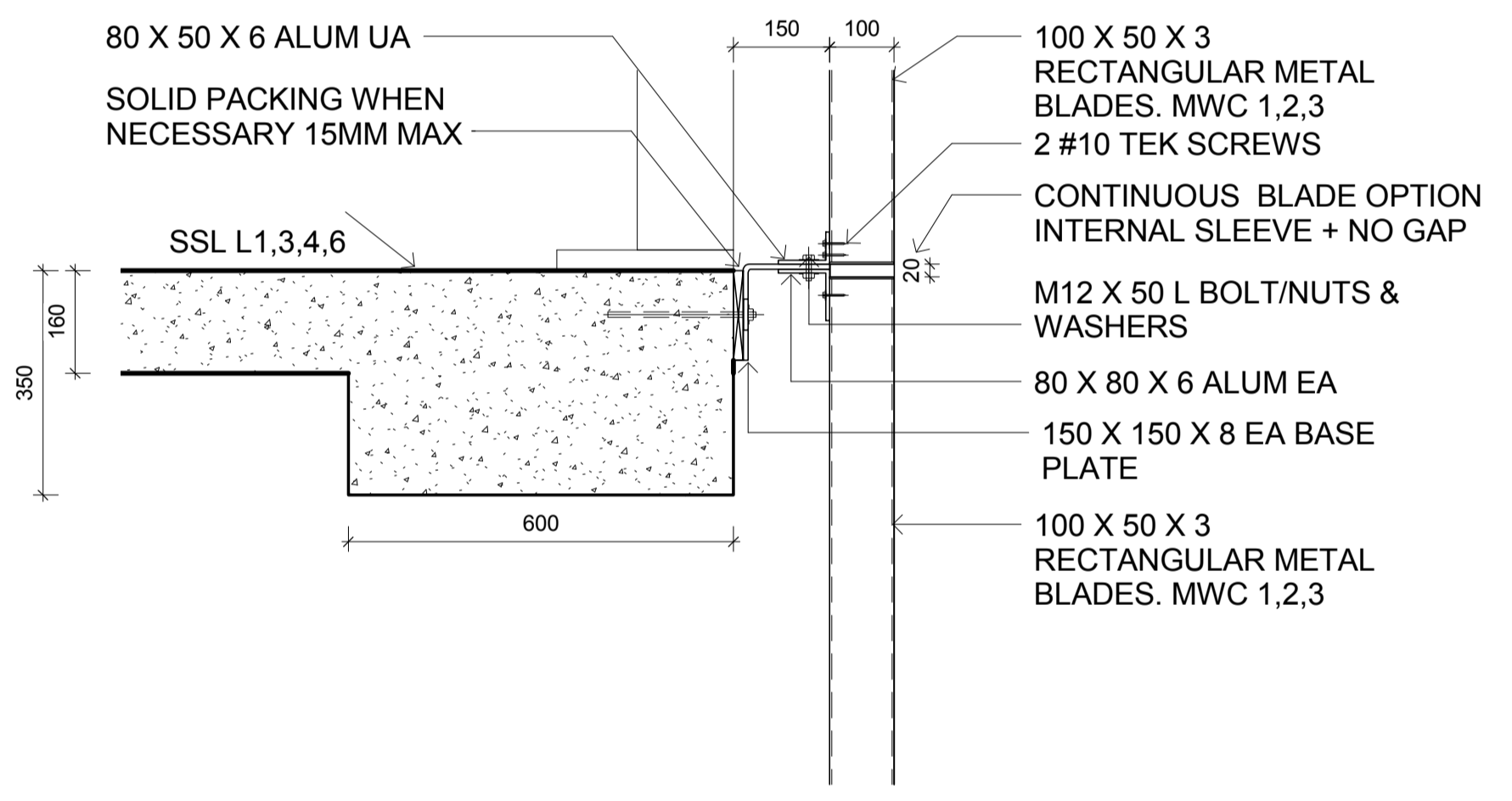
REV	DESCRIPTION	DRAWN	CHECK	DATE
1	TENDER	RT	TR	14/12/15



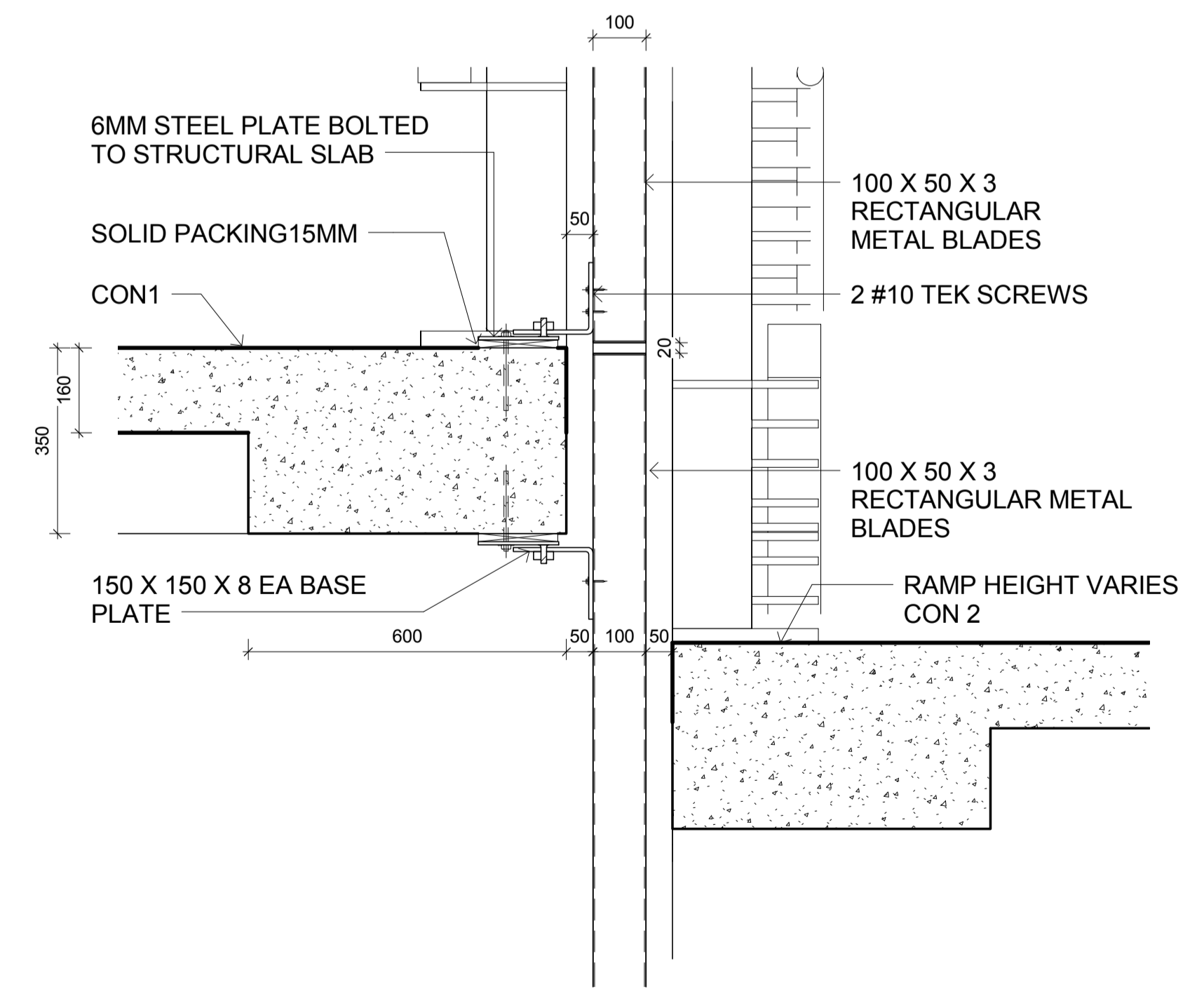
3 BLADE DETAIL LEVEL 2
1:10



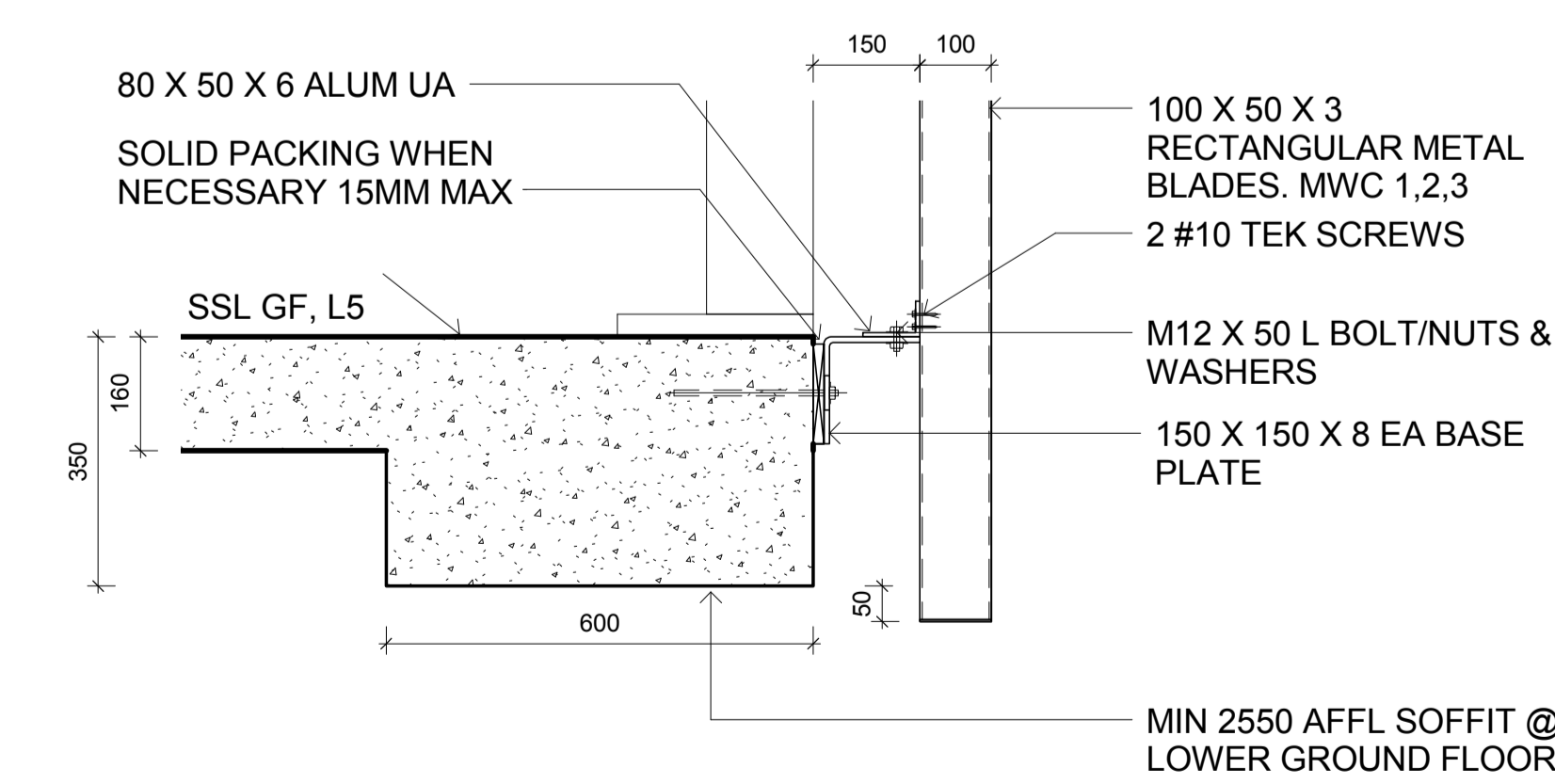
5 BLADES SECTION DETAIL TYP - STAIRS
1:10



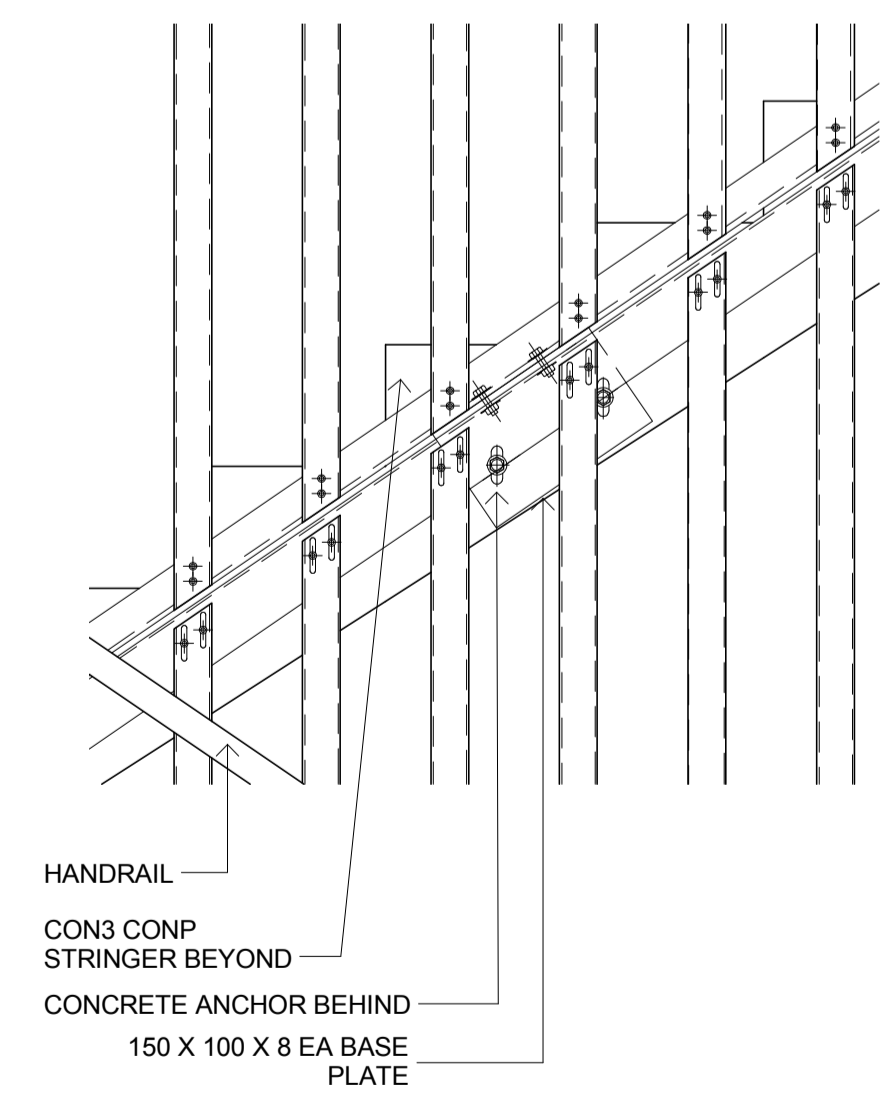
2 BLADE DETAIL TYPICAL MIDDLE
1:10



4 BLADE DETAIL TYPICAL RAMP
1:10



1 BLADE DETAIL BOTTOM
1:10



6 BLADE ELEVATION TYPICAL STAIRS
1:10

ISSUE FOR TENDER
NOT FOR CONSTRUCTION

CLIENT:
NSW HEALTH INFRASTRUCTURE **Health Infrastructure**
 NSW GOVERNMENT

Level 6, 77 Pacific Highway
North Sydney NSW 2060
 P: (02) 9979 5427
F: (02) 8904 1377
www.hinfra.health.nsw.gov.au

PROJECT MANAGER:
PRICE WATERHOUSE COOPERS

Darling Park
201 Sussex Street
Sydney NSW 2000
 P: (02) 8266 2750
F: (02) 8266 2780
www.pwc.com.au

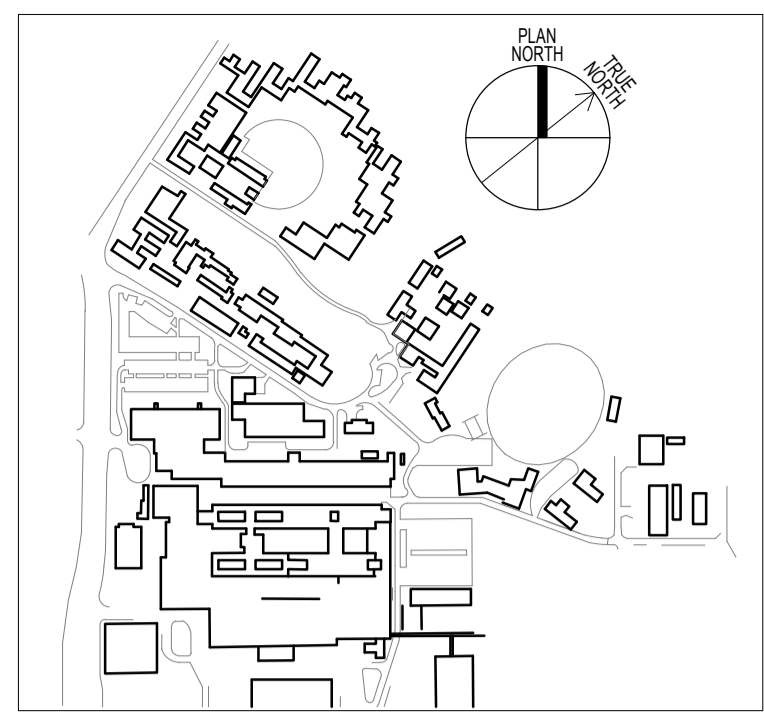
LEAD ARCHITECT:
HDR | RD + MSJ

Level 1, 110 Walker Street
North Sydney NSW 2060
 P: (02) 9956 2666
F: (02) 9959 3015
askhldr@hdrinc.com.au

WESTMEAD MULTI STOREY CARPARK
Cnr Institute Road and Darcy Road
Westmead NSW 2145
Westmead Redevelopment
Building health. Transforming lives.

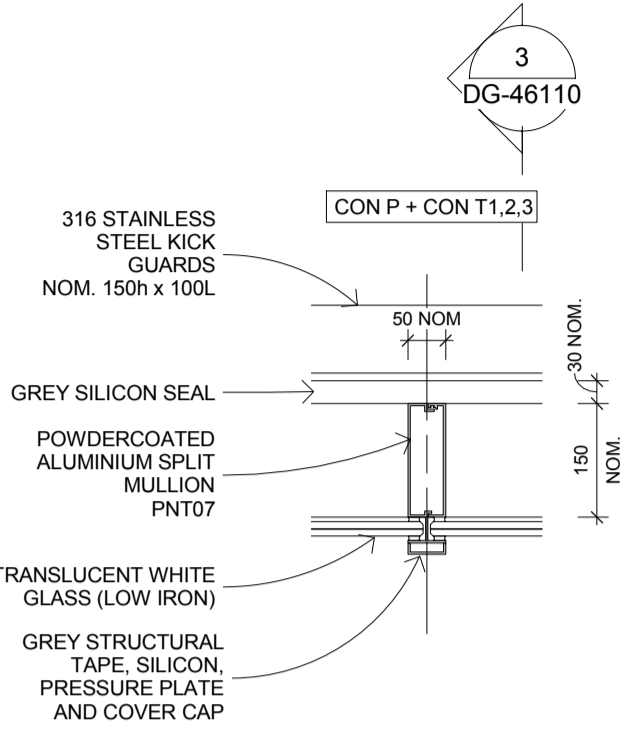
DRAWING TITLE:
FACADE BLADE DETAILS

SCALE:	1:10	DOCS NUMBER:	5335	CHECKED:	TR
PROJECT NUMBER:	232186	DRAWING NUMBER:	MSC-HDR-AR-DG-460201	ISSUE:	

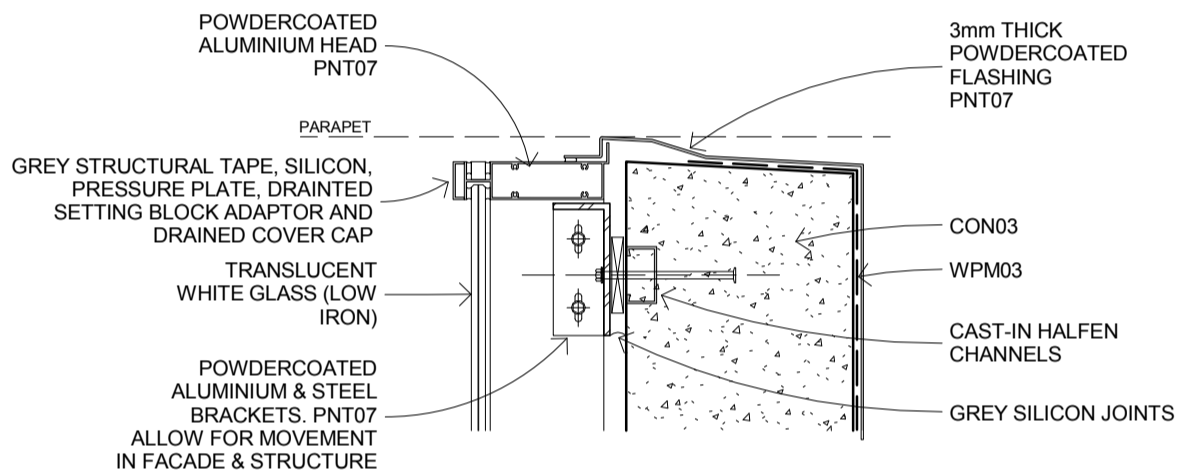


THIS DOCUMENT IS THE COPYRIGHT OF THE HDR GROUP (NSW) PTY LTD
 ALL THE INFORMATION ILLUSTRATED ON THIS DOCUMENT IS TO BE CHECKED AND VERIFIED ON SITE
 IN THE EVENT OF DISCREPANCIES REFER TO ARCHITECT PRIOR TO COMMENCEMENT OF THE WORK.
 DO NOT SCALE DRAWINGS ELECTRONICALLY OR MANUALLY.

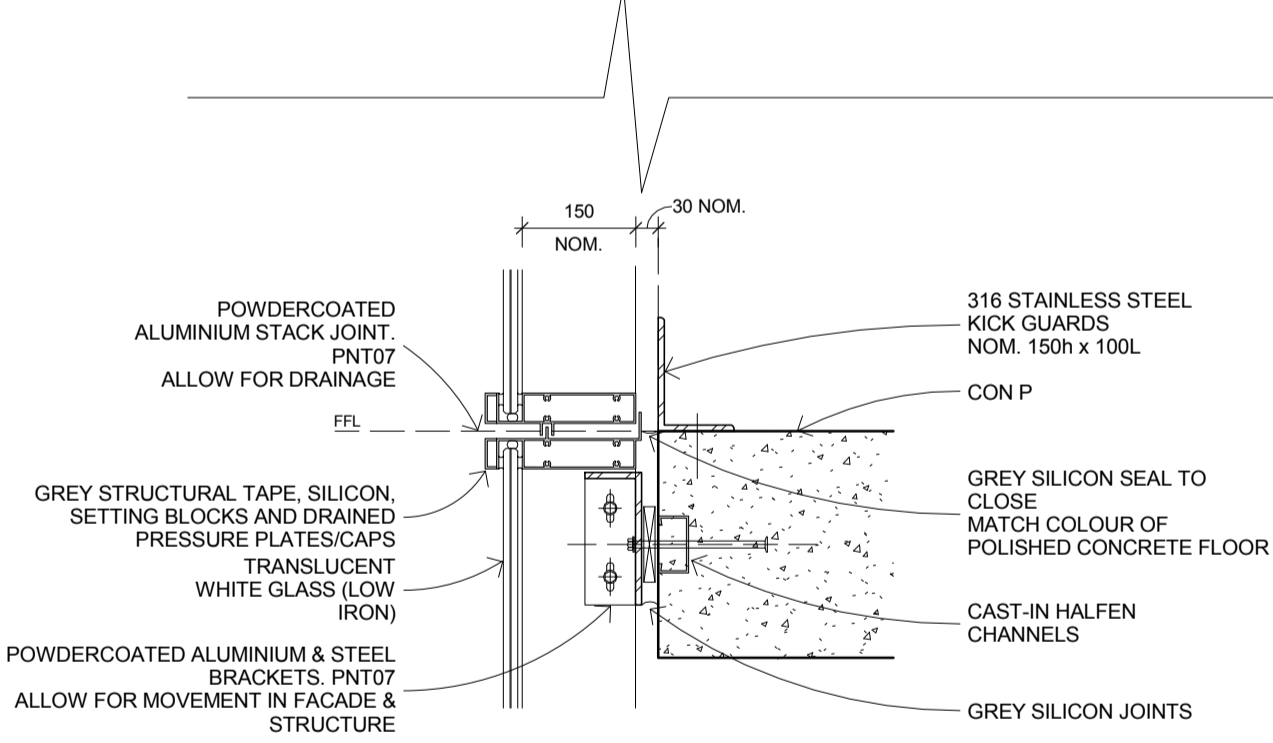
REV	DESCRIPTION	DRAWN	CHECK	DATE
1	TENDER	RT	TR	14/12/15



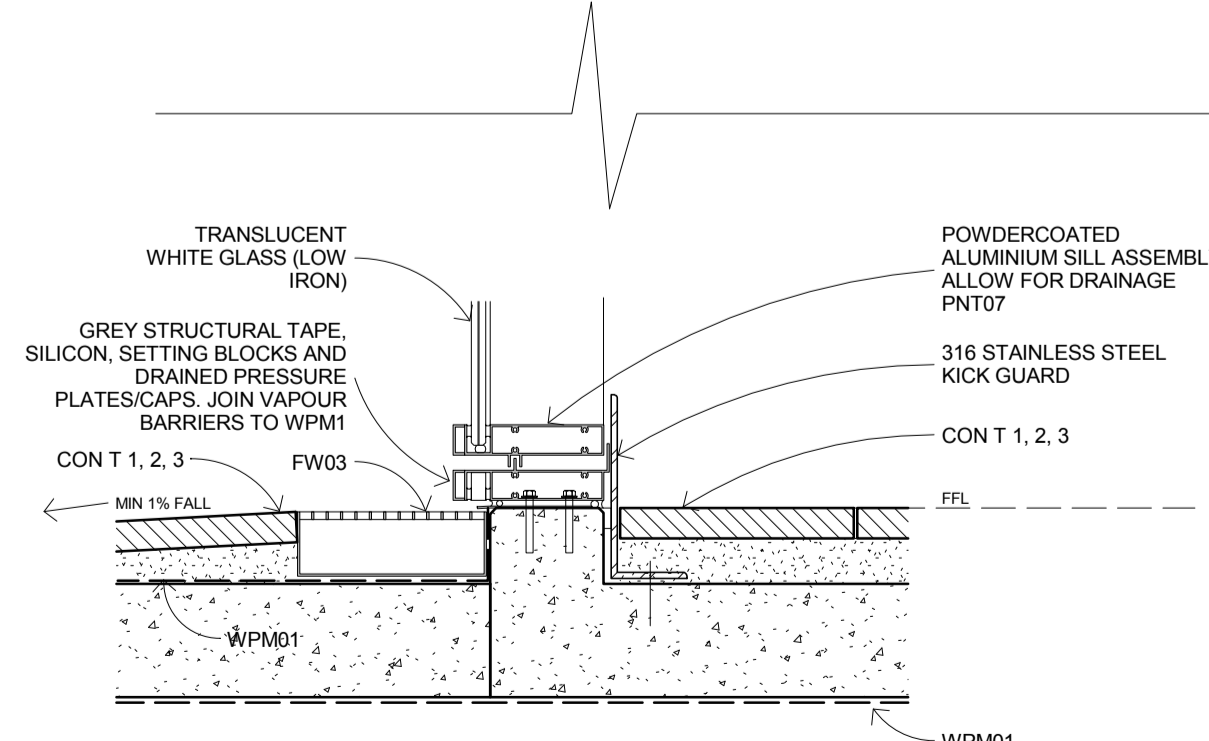
1 CW1 MULLION PLAN DETAIL
1:10



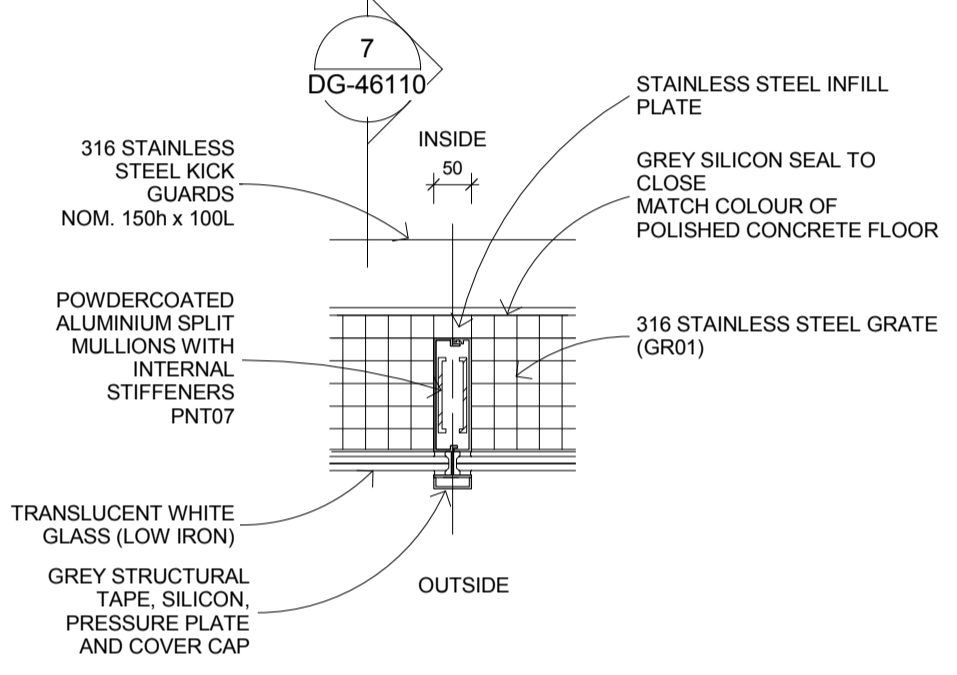
2 CW1 SECTION PARAPET
1:10



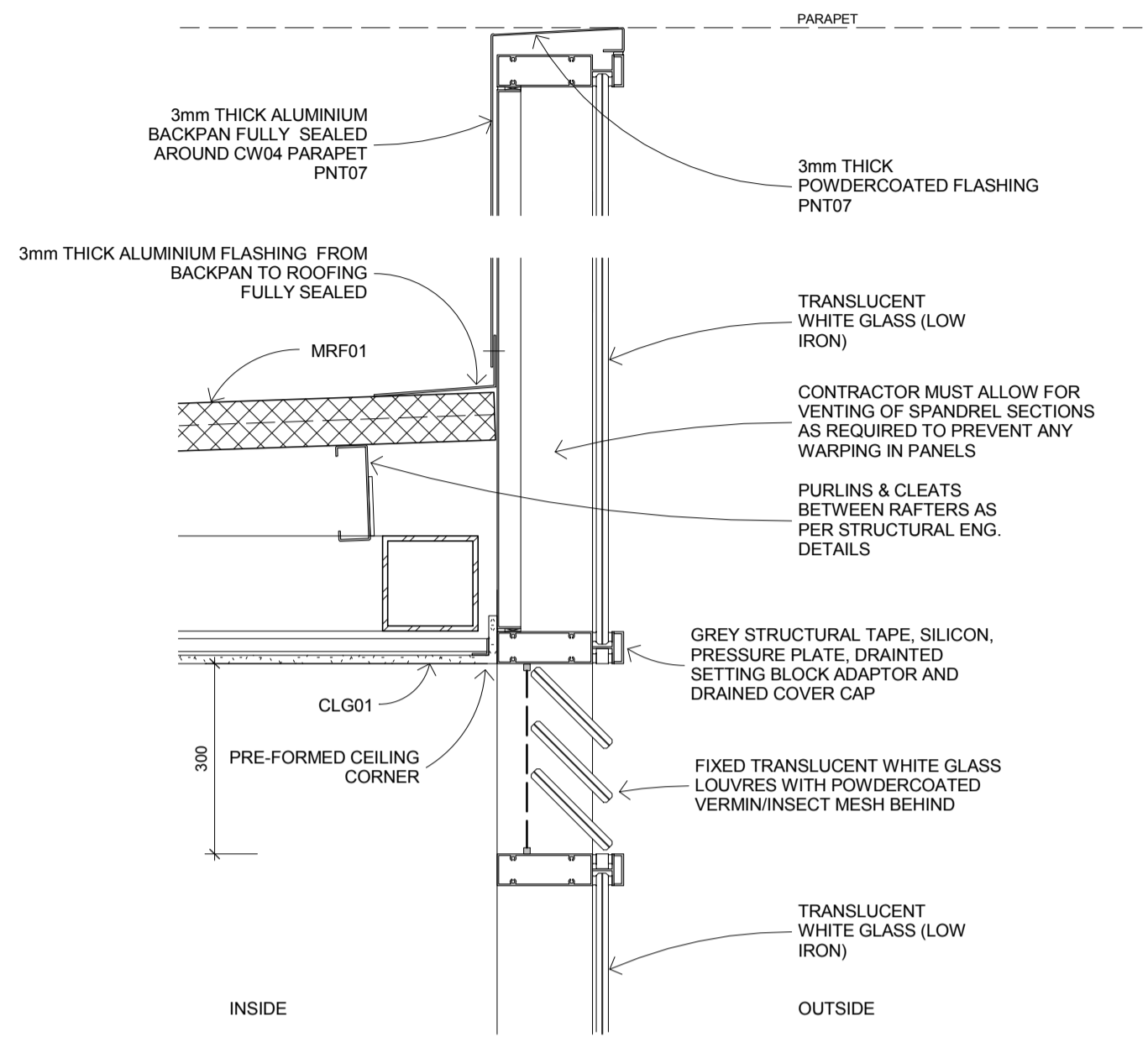
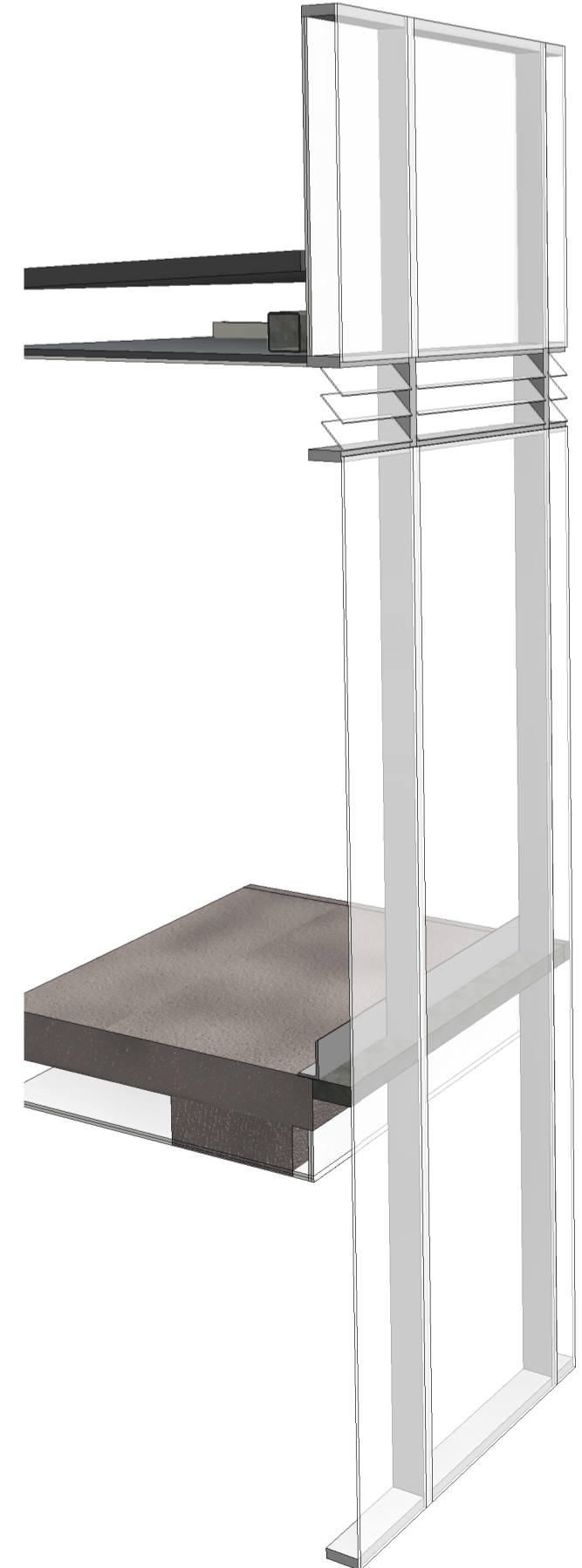
3 CW1 SECTION DETAIL
1:10



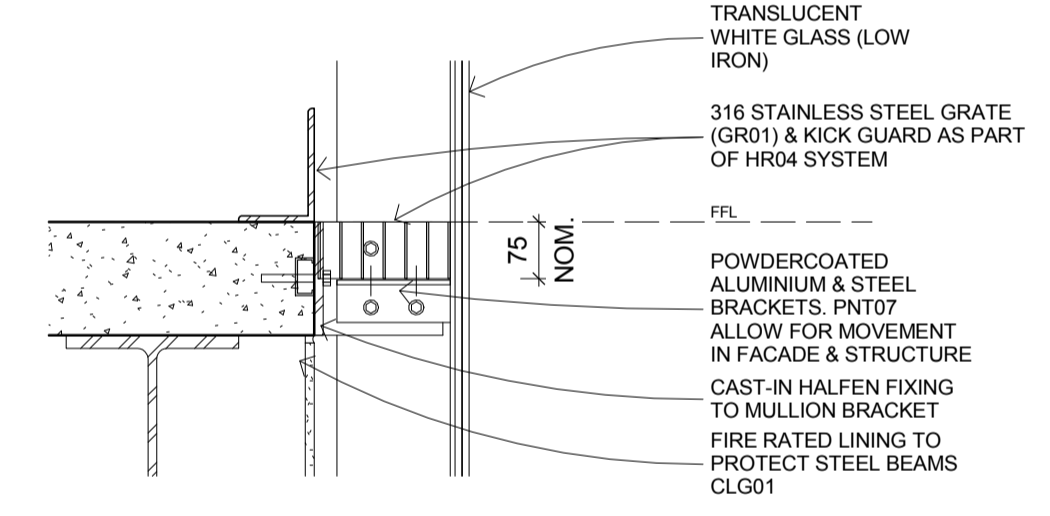
4 CW1 SECTION SILL
1:10



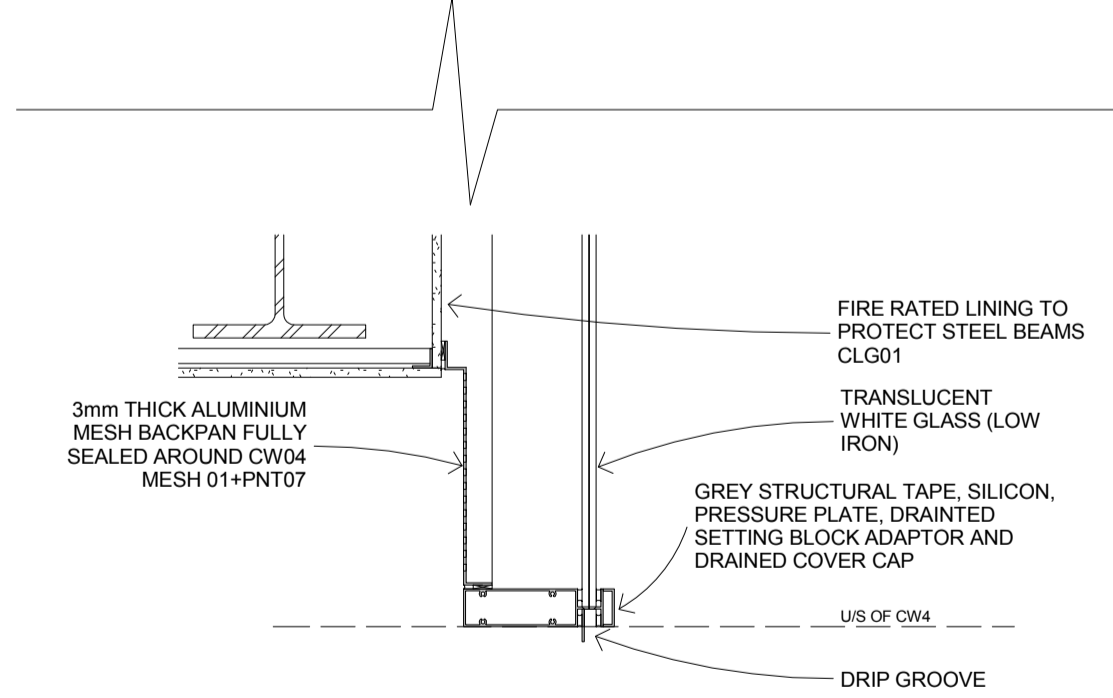
5 CW4 MULLION PLAN DETAIL - LOW LEVEL
1:10



6 CW4 WINDOW HEAD & PARAPET DETAIL
1:10



7 CW4 SECTION DETAIL
1:10



8 CW4 SECTION DETAIL - SKIRT
1:10

ISSUE FOR TENDER
 NOT FOR CONSTRUCTION

CLIENT:
NSW HEALTH INFRASTRUCTURE
 Level 6, 77 Pacific Highway
 North Sydney NSW 2060
 P: (02) 9979 5427
 F: (02) 8904 1377
 www.health.nsw.gov.au

PROJECT MANAGER:
PRICE WATERHOUSE COOPERS
 Darling Park
 201 Sussex Street
 Sydney NSW 2000
 P: (02) 8266 2750
 F: (02) 8266 2780
 www.pwc.com.au

LEAD ARCHITECT:
HDR | RD + MSJ
 Lvl 1, 110 Walker Street
 North Sydney NSW 2060
 P: (02) 9556 2666
 F: (02) 9559 3015
 askhldr@hdrinc.com.au

WESTMEAD MULTI STOREY CARPARK
 Cnr Institute Road and Darcy Road
 Westmead NSW 2145
Westmead Redevelopment
 Building health. Transforming lives.

DRAWING TITLE:
FACADE GLAZING DETAILS
 SCALE: 1:10
 DOWNS NUMBER: **5335**
 PROJECT NUMBER: **232186**
 DRAWING NUMBER: **MSC-HDR-AR-DG-461101**
 CHECKED: TR
 ISSUE: