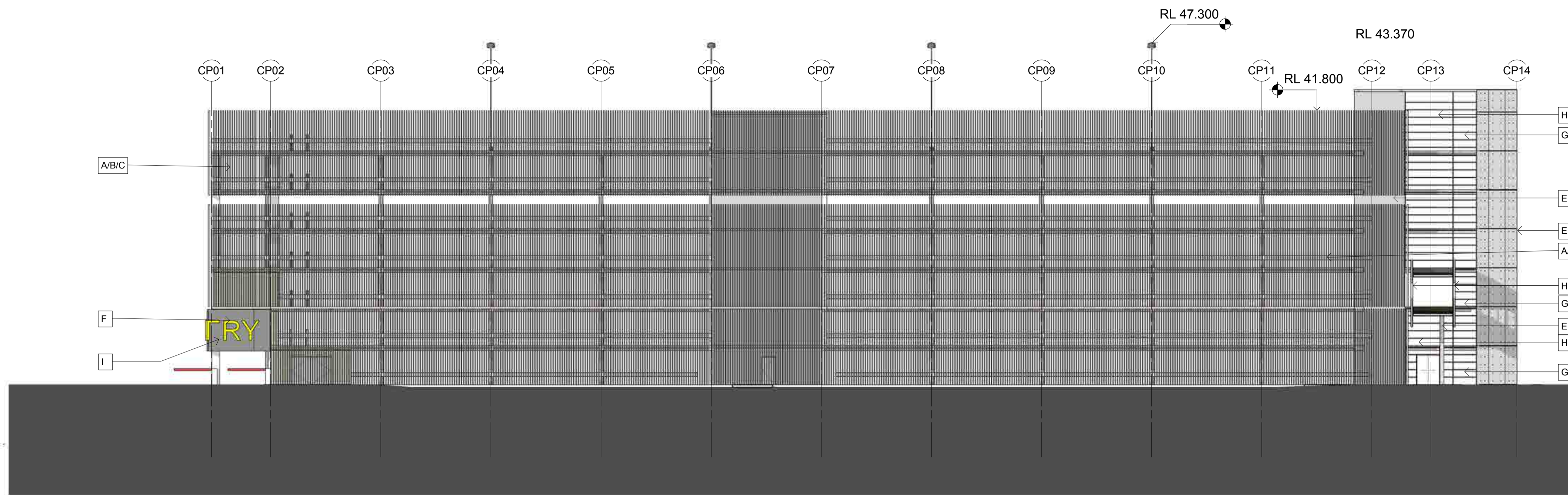


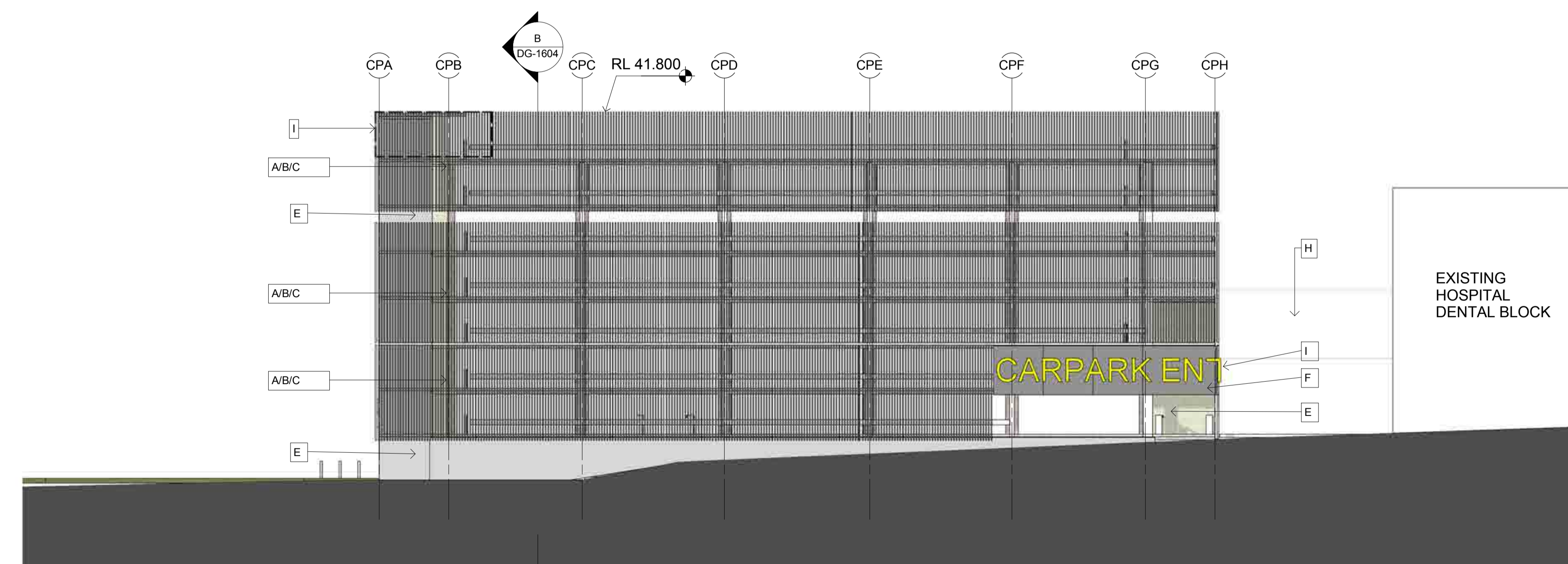
THIS DOCUMENT IS THE COPYRIGHT OF THE HDR GROUP (NSW) PTY LTD
 ALL THE INFORMATION ILLUSTRATED ON THIS DOCUMENT IS TO BE CHECKED AND VERIFIED ON SITE
 IN THE EVENT OF DISCREPANCIES REFER TO ARCHITECT PRIOR TO COMMENCEMENT OF THE WORK.
 DO NOT SCALE DRAWINGS ELECTRONICALLY OR MANUALLY.

REV	DESCRIPTION	DRAWN	CHECK	DATE
1	PRELIMINARY COSTING ISSUE	JH	AB	05/08/2015
2	COSTING ISSUE	JH	AB	07/08/2015
3	FINAL ISSUE	AB	AF	08/09/2015
4	FINAL STATUS	AB	AF	09/09/2015
5	FINAL STATUS	AB	AF	11/09/2015
6	SSD DRAFT	RT	AF	9/10/2015
7	SSD APPROVAL	RT	EG	29/10/2015

- MATERIALS LEGEND**
- A. FULL HEIGHT POWDER COATED ALUMINIUM EXTRUSIONS FIXED BACK TO SLAB EDGE
 TYPE : LOUVRECLAD BAROSSA SERIES OR SIMILAR WITH END CAPS
 SIZE: 50MM X 100MM X HEIGHT VARIES
 COLOUR LIGHT GREY
 - B. FULL HEIGHT POWDER COATED ALUMINIUM EXTRUSIONS FIXED BACK TO SLAB EDGE
 TYPE : LOUVRECLAD BAROSSA SERIES OR SIMILAR WITH END CAPS
 SIZE: 50MM X 100MM X HEIGHT VARIES
 COLOUR MID GREY
 - C. FULL HEIGHT POWDER COATED ALUMINIUM EXTRUSIONS FIXED BACK TO SLAB EDGE
 TYPE : LOUVRECLAD BAROSSA SERIES OR SIMILAR WITH END CAPS
 SIZE: 50MM X 100MM X HEIGHT VARIES
 COLOUR DARK GREY
 - D. FULL HEIGHT POWDER COATED ALUMINIUM EXTRUSIONS FIXED BACK TO SLAB EDGE
 TYPE : LOUVRECLAD BAROSSA SERIES OR SIMILAR WITH END CAPS
 SIZE: 50MM X 100MM X HEIGHT VARIES
 COLOUR YELLOW. LOCATION ON SIDES OF CENTRAL RAMP AND TO LEVEL 6
 - E. CLASS 2 CONCRETE FINISH WITH EQUALISED SHUTTER PANEL AND SEMI RECESSED TIE BOLT HOLE PATTERNS
 - F. EXTERNAL GRADE CONTIGUOUS COLOURED CORE COMPRESSED FIBRE CEMENT SHEETING. COLOUR DARK GREY
 - G. SINGLE GLAZED PANELS ON PATCH FITTINGS. NOM. 10mm SILICON SEALS AND JOINTS BETWEEN GLASS PANELS. FACTORY PRE FINISHED POWDERCOATED EXPOSED STEEL MULLIONS WITH POWDERCOATED GLEAT PLATES.
 - H. ACRYL/LOPOLYCARBONATE TYPE PANEL SYSTEM ON INTERNAL POWDERCOATED FRAMING. UV RESISTANT. TRANSLUCENT WHITE. APPROXIMATELY 50% VLT SUBJECT TO SAMPLE AND PROTYPE REVIEW. NATURAL VENTILATION GAPS AS PER MECHANICAL ENGINEERS REQUIREMENTS. NATURAL VENTILATION GAPS TO BRIDGE ONLY
 - I. INDICATIVE SIGNAGE AND SIGNAGE ZONES TO BE READ IN CONJUNCTION WITH WAYFINDING AND SIGNAGE DRAWINGS
- FACADE PATTERN TO BE APPROVED BY ARCHITECT



1 SOUTH
1 : 200



2 WEST
1 : 200

STATE SIGNIFICANT DEVELOPMENT
 APPROVAL
 NOT FOR CONSTRUCTION

CLIENT:
NSW HEALTH INFRASTRUCTURE
 NSW Government Health Infrastructure
 Level 6, 77 Pacific Highway North Sydney NSW 2060
 P: (02) 9979 5427
 F: (02) 8904 1377
 www.health.nsw.gov.au

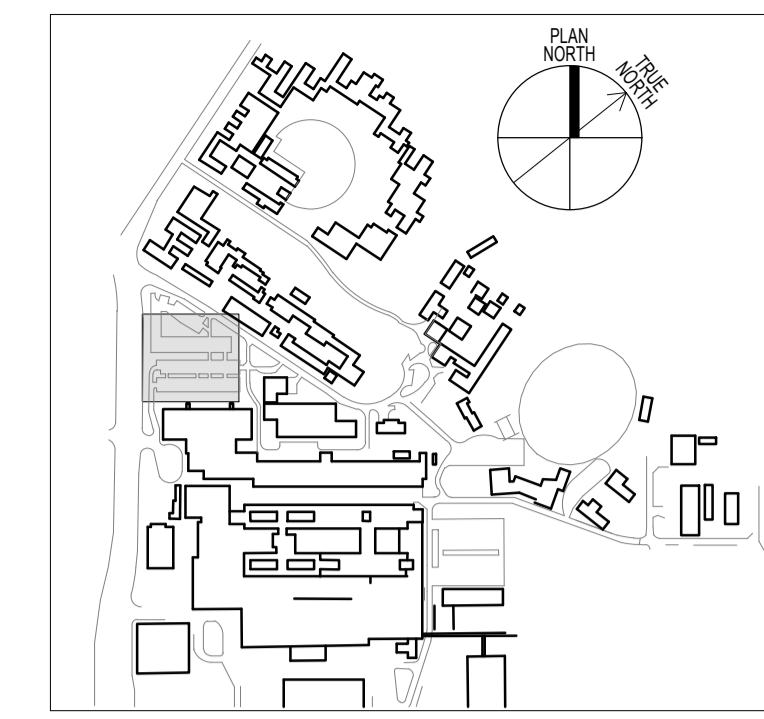
PROJECT MANAGER:
PRICE WATERHOUSE COOPERS
 PwC
 Darling Park 201 Sussex Street Sydney NSW 2000
 P: (02) 8266 2750
 F: (02) 8266 2780
 www.pwc.com.au

LEAD ARCHITECT:
HDR | RD + MSJ
 Lvl 1, 110 Walker Street North Sydney NSW 2060
 P: (02) 9956 2666
 F: (02) 9959 3015
 aashdr@hdrincosydney.com

WESTMEAD MULTI STOREY CARPARK
 Cnr Institute Road and Darcy Road
 Westmead NSW 2145
Westmead Redevelopment
 Building health. Transforming lives.

DRAWING TITLE:
 SOUTH / WEST ELEVATIONS

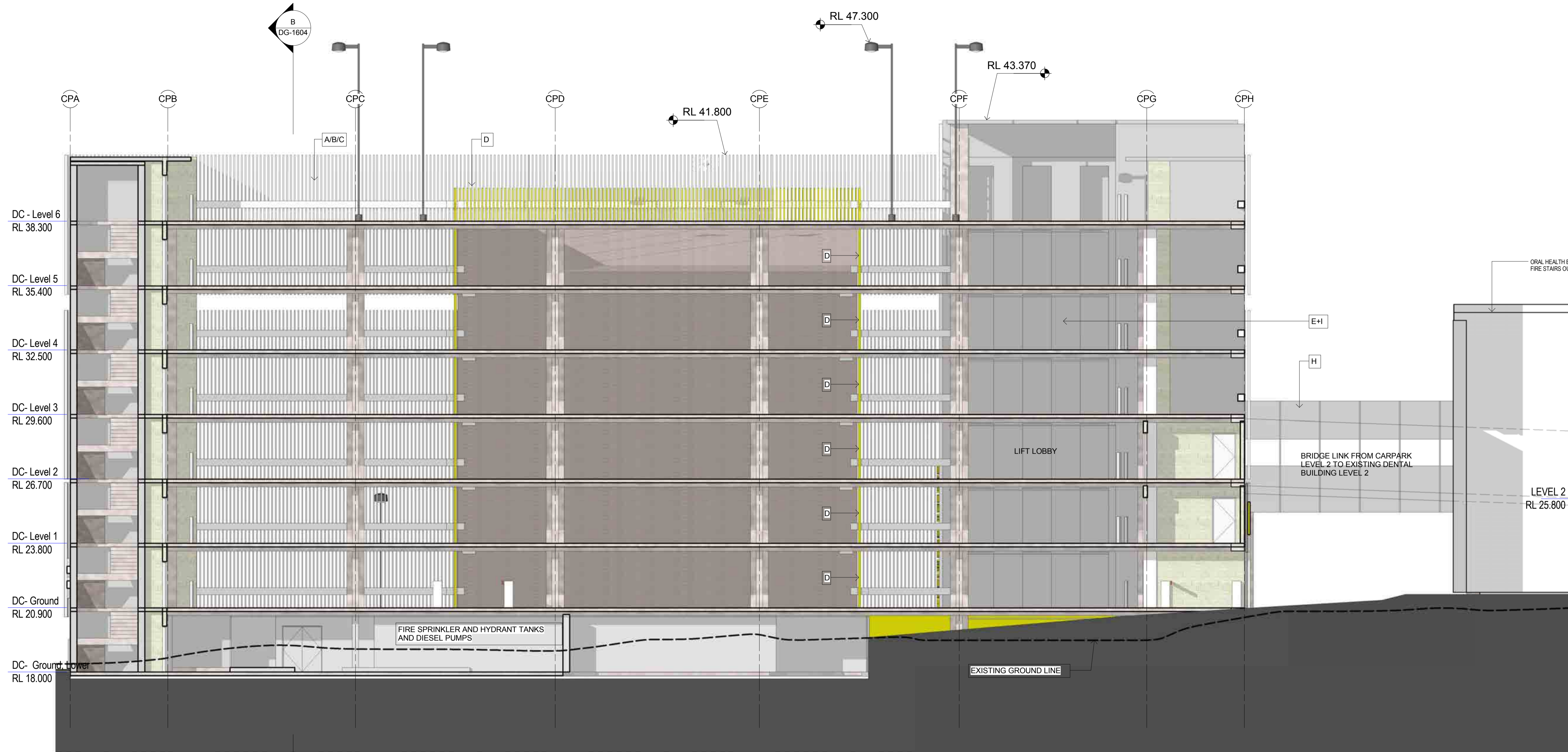
SCALE:	DOCS NUMBER:	CHECKED:
1 : 200	5335	EG
PROJECT NUMBER:	DRAWING NUMBER:	ISSUE:
232186	MSC-HDR-AR-DG-1502 7	



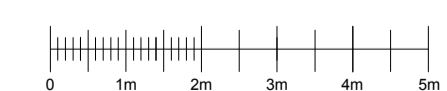
THIS DOCUMENT IS THE COPYRIGHT OF THE HOBBS GROUP (NSW) PTY LTD
 ALL THE INFORMATION ILLUSTRATED ON THIS DOCUMENT IS TO BE CHECKED AND VERIFIED ON SITE
 IN THE EVENT OF DISCREPANCIES REFER TO ARCHITECT PRIOR TO COMMENCEMENT OF THE WORK.
 DO NOT SCALE DRAWINGS ELECTRONICALLY OR MANUALLY.

REV	DESCRIPTION	DRAWN	CHECK	DATE
1	PRELIMINARY COSTING ISSUE	JH	AB	05/08/2015
2	COSTING ISSUE	JH	AB	07/08/2015
3	FINAL ISSUE	AB	AF	08/09/2015
4	FINAL STATUS	AB	AF	09/09/2015
5	FINAL STATUS	AB	AF	11/09/2015
6	SSD DRAFT	RT	AF	9/10/2015
7	SSD APPROVAL	RT	EG	29/10/2015

- MATERIALS LEGEND**
- A. FULL HEIGHT POWDER COATED ALUMINIUM EXTRUSIONS FIXED BACK TO SLAB EDGE
 TYPE : LOUVRECLAD BAROSSA SERIES OR SIMILAR WITH END CAPS
 SIZE: 50MM X 100MM X HEIGHT VARIES
 COLOUR LIGHT GREY
 - B. FULL HEIGHT POWDER COATED ALUMINIUM EXTRUSIONS FIXED BACK TO SLAB EDGE
 TYPE : LOUVRECLAD BAROSSA SERIES OR SIMILAR WITH END CAPS
 SIZE: 50MM X 100MM X HEIGHT VARIES
 COLOUR MID GREY
 - C. FULL HEIGHT POWDER COATED ALUMINIUM EXTRUSIONS FIXED BACK TO SLAB EDGE
 TYPE : LOUVRECLAD BAROSSA SERIES OR SIMILAR WITH END CAPS
 SIZE: 50MM X 100MM X HEIGHT VARIES
 COLOUR DARK GREY
 - D. FULL HEIGHT POWDER COATED ALUMINIUM EXTRUSIONS FIXED BACK TO SLAB EDGE
 TYPE : LOUVRECLAD BAROSSA SERIES OR SIMILAR WITH END CAPS
 SIZE: 50MM X 100MM X HEIGHT VARIES
 COLOUR YELLOW. LOCATION ON SIDES OF CENTRAL RAMP AND TO LEVEL 6
 - E. CLASS 2 CONCRETE FINISH WITH EQUALISED SHUTTER PANEL AND SEMI RECESSED TIE BOLT HOLE PATTERNS
 - F. EXTERNAL GRADE CONTIGUOUS COLOURED CORE COMPRESSED FIBRE CEMENT SHEETING. COLOUR DARK GREY
 - G. SINGLE GLAZED PANELS ON PATCH FITTINGS. NOM. 10mm SILICON SEALS AND JOINTS BETWEEN GLASS PANELS. FACTORY PRE FINISHED POWDERCOATED EXPOSED STEEL MULLIONS WITH POWDERCOATED CLEAT PLATES.
 - H. ACRYLIC/POLYCARBONATE TYPE PANEL SYSTEM ON INTERNAL POWDERCOATED FRAMING. UV RESISTANT. TRANSLUCENT WHITE. APPROXIMATELY 50% VLT SUBJECT TO SAMPLE AND PROTYPE REVIEW. NATURAL VENTILATION GAPS AS PER MECHANICAL ENGINEERS REQUIREMENTS. NATURAL VENTILATION GAPS TO BRIDGE ONLY.
 - I. INDICATIVE SIGNAGE AND SIGNAGE ZONES TO BE READ IN CONJUNCTION WITH WAYFINDING AND SIGNAGE DRAWINGS
- FAÇADE PATTERN TO BE APPROVED BY ARCHITECT



B SECTION B
 1 : 100



STATE SIGNIFICANT DEVELOPMENT
 APPROVAL
 NOT FOR CONSTRUCTION

CLIENT:
NSW HEALTH INFRASTRUCTURE
 North Sydney NSW 2060

NSW Health Infrastructure
 P: (02) 9979 5427
 F: (02) 8904 1377
 www.health.nsw.gov.au

PROJECT MANAGER:
PRICE WATERHOUSE COOPERS

pwc
 Darling Park
 201 Sussex Street
 Sydney NSW 2000
 P: (02) 8266 2750
 F: (02) 8266 2780
 www.pwc.com.au

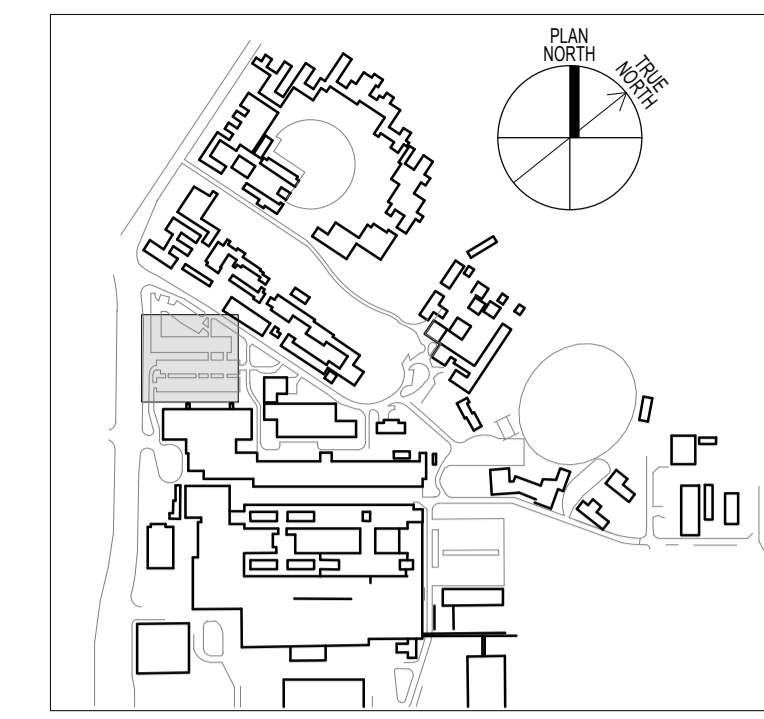
LEAD ARCHITECT:
HDR | RD + MSJ
 Lvl 1, 110 Walker Street
 North Sydney NSW 2060
 P: (02) 9956 2666
 F: (02) 9959 3015
 aashdr@hdrpriceadviser.com

WESTMEAD MULTI STOREY CARPARK
 Cnr Institute Road and Darcy Road
 Westmead NSW 2145
Westmead Redevelopment
 Building health. Transforming lives.

DRAWING TITLE:
SECTION B

SCALE:	DOHS NUMBER:	CHECKED:
As indicated	5335	EG
PROJECT NUMBER:	DRAWING NUMBER:	ISSUE:
232186	MSC-HDR-AR-DG-1602 7	

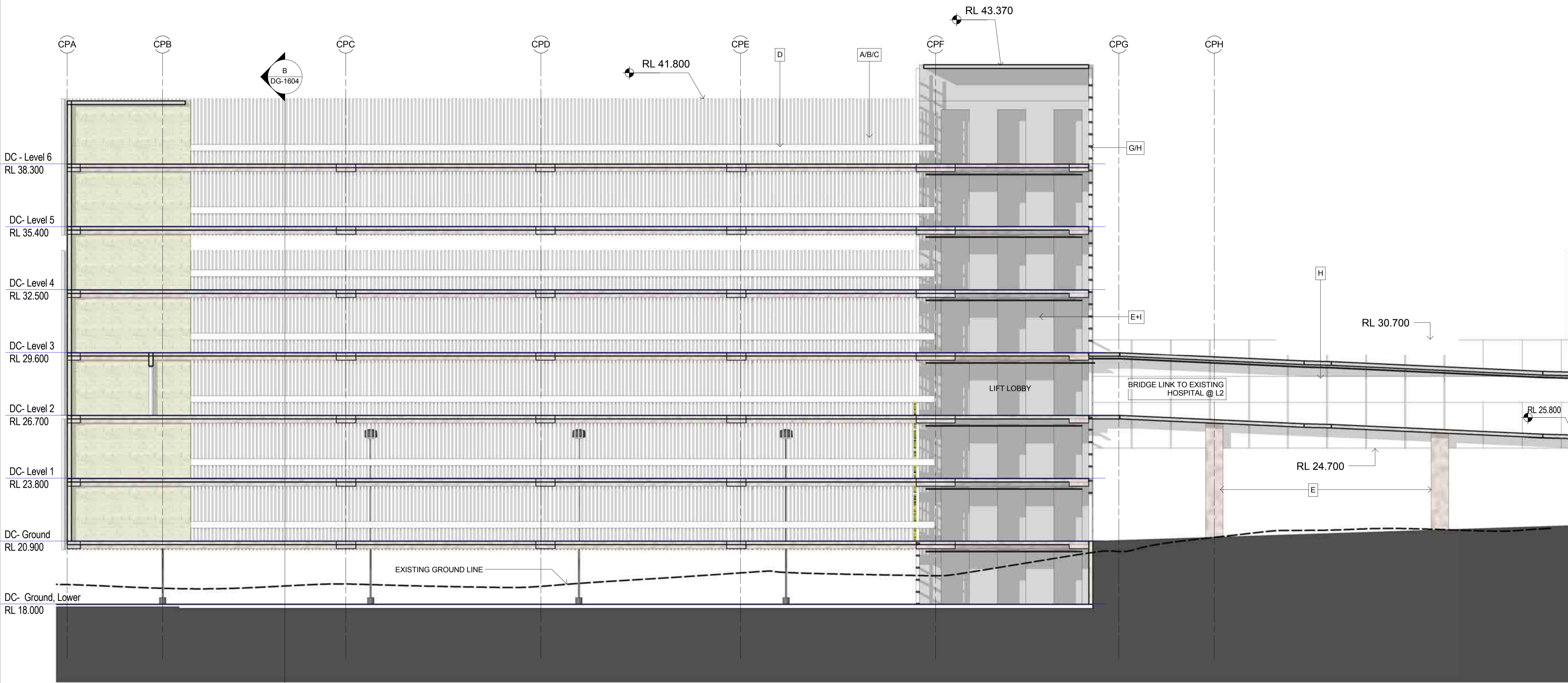
C:\m\232186\MULTI DECK CARPARK STAND ALONE.rvt
 11/11/2015 12:38:02 PM



THIS DOCUMENT IS THE COPYRIGHT OF THE HDR GROUP (NSW) Pty Ltd
 ALL THE INFORMATION ILLUSTRATED ON THIS DOCUMENT IS TO BE CHECKED AND VERIFIED ON SITE
 IN THE EVENT OF DISCREPANCIES REFER TO ARCHITECT PRIOR TO COMMENCEMENT OF THE WORK.
 DO NOT SCALE DRAWINGS ELECTRONICALLY OR MANUALLY.

REV	DESCRIPTION	DRAWN	CHECK	DATE
1	PRELIMINARY COSTING ISSUE	JH	AB	05/08/2015
2	COSTING ISSUE	JH	AB	07/08/2015
3	FINAL ISSUE	AB	AF	08/09/2015
4	FINAL STATUS	AB	AF	09/09/2015
5	FINAL STATUS	AB	AF	11/09/2015
6	SSD DRAFT	RT	AF	9/10/2015
7	SSD APPROVAL	RT	EG	29/10/2015

- MATERIALS LEGEND**
- A. FULL HEIGHT POWDER COATED ALUMINIUM EXTRUSIONS FIXED BACK TO SLAB EDGE
 TYPE : LOUVRECLAD BAROSSA SERIES OR SIMILAR WITH END CAPS
 SIZE: 50MM X 100MM X HEIGHT VARIES
 COLOUR LIGHT GREY
 - B. FULL HEIGHT POWDER COATED ALUMINIUM EXTRUSIONS FIXED BACK TO SLAB EDGE
 TYPE : LOUVRECLAD BAROSSA SERIES OR SIMILAR WITH END CAPS
 SIZE: 50MM X 100MM X HEIGHT VARIES
 COLOUR MID GREY
 - C. FULL HEIGHT POWDER COATED ALUMINIUM EXTRUSIONS FIXED BACK TO SLAB EDGE
 TYPE : LOUVRECLAD BAROSSA SERIES OR SIMILAR WITH END CAPS
 SIZE: 50MM X 100MM X HEIGHT VARIES
 COLOUR DARK GREY
 - D. FULL HEIGHT POWDER COATED ALUMINIUM EXTRUSIONS FIXED BACK TO SLAB EDGE
 TYPE : LOUVRECLAD BAROSSA SERIES OR SIMILAR WITH END CAPS
 SIZE: 50MM X 100MM X HEIGHT VARIES
 COLOUR YELLOW. LOCATION ON SIDES OF CENTRAL RAMP AND TO LEVEL 6
 - E. CLASS 2 CONCRETE FINISH WITH EQUALISED SHUTTER PANEL AND SEMI RECESSED TIE BOLT HOLE PATTERNS
 - F. EXTERNAL GRADE CONTIGUOUS COLOURED CORE COMPRESSED FIBRE CEMENT SHEETING. COLOUR DARK GREY
 - G. SINGLE GLAZED PANELS ON PATCH FITTINGS. NOM. 10mm SILICON SEALS AND JOINTS BETWEEN GLASS PANELS. FACTORY PRE FINISHED POWDERCOATED EXPOSED STEEL MILLIONS WITH POWDERCOATED GLEAT PLATES
 - H. ACRYLIC/POLYCARBONATE TYPE PANEL SYSTEM ON INTERNAL POWDERCOATED FRAMING. UV RESISTANT. TRANSLUCENT WHITE. APPROXIMATELY 50% VLT. SUBJECT TO SAMPLE AND PROTOTYPE REVIEW. NATURAL VENTILATION GAPS AS PER MECHANICAL ENGINEERS REQUIREMENTS. NATURAL VENTILATION GAPS TO BRIDGE ONLY
 - I. INDICATIVE SIGNAGE AND SIGNAGE ZONES TO BE READ IN CONJUNCTION WITH WAYFINDING AND SIGNAGE DRAWINGS
- FAÇADE PATTERN TO BE APPROVED BY ARCHITECT



STATE SIGNIFICANT DEVELOPMENT
 APPROVAL
 NOT FOR CONSTRUCTION

CLIENT:
NSW HEALTH INFRASTRUCTURE

NSW Health Infrastructure logo

Level 6, 77 Pacific Highway
 North Sydney NSW 2060

P: (02) 9979 5427
 F: (02) 8904 1377
 www.health.nsw.gov.au

PROJECT MANAGER:
PRICE WATERHOUSE COOPERS

pwc logo

Darling Park
 201 Sussex Street
 Sydney NSW 2000

P: (02) 8266 2750
 F: (02) 8266 2780
 www.pwc.com.au

LEAD ARCHITECT:

HDR | RD + MSJ

Lvl 1, 110 Walker Street
 North Sydney NSW 2060

P: (02) 9956 2666
 F: (02) 9959 3015
 aashdr@hdr.com.au

WESTMEAD MULTI STOREY CARPARK
 Cnr Institute Road and Darcy Road
 Westmead NSW 2145

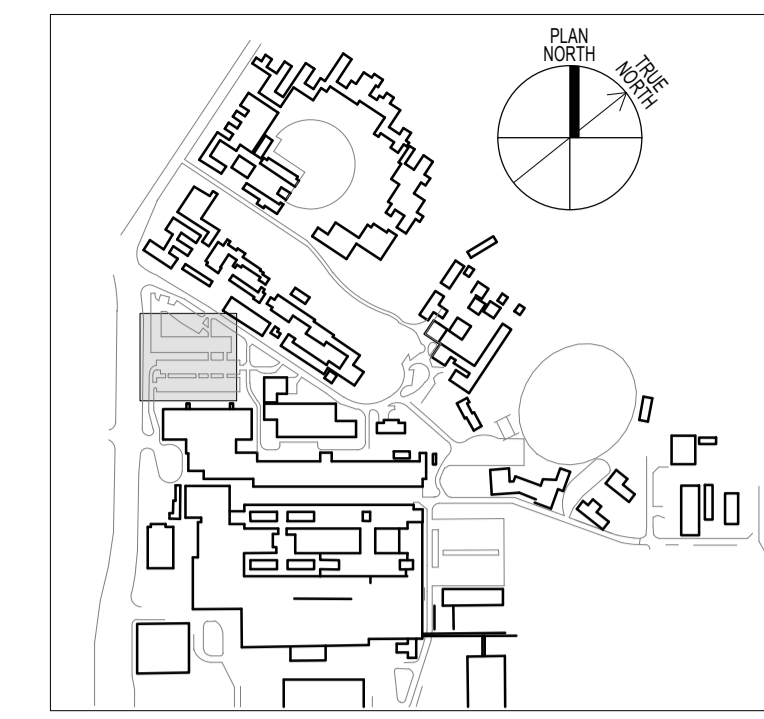
Westmead Redevelopment
 Building health. Transforming lives.

DRAWING TITLE:
SECTION C

SCALE:	DOVS NUMBER:	CHECKED:
As indicated	5335	EG
PROJECT NUMBER:	DRAWING NUMBER:	ISSUE:
232186	MSC-HDR-AR-DG-1603 7	

1 SECTION C
 1 : 100

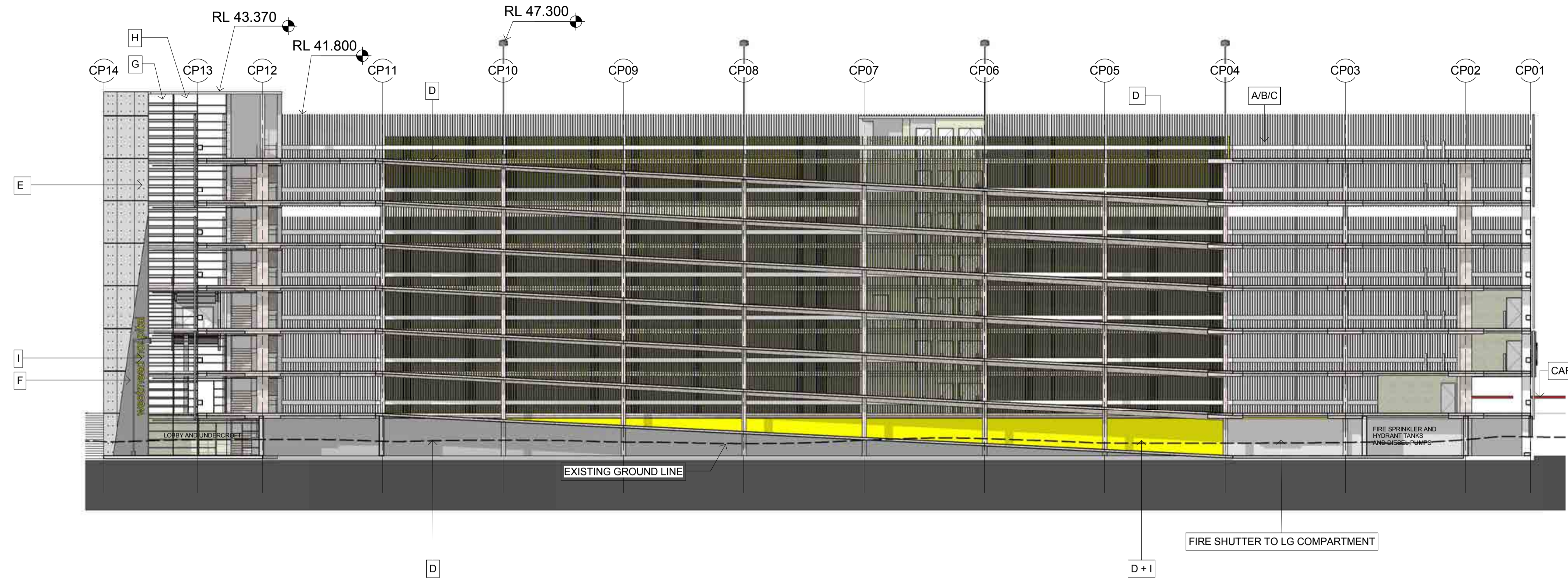
C:\m\232186\MULTI DECK CARPARK_STAND ALONE.rvt
 11/11/2015 12:19:22 PM



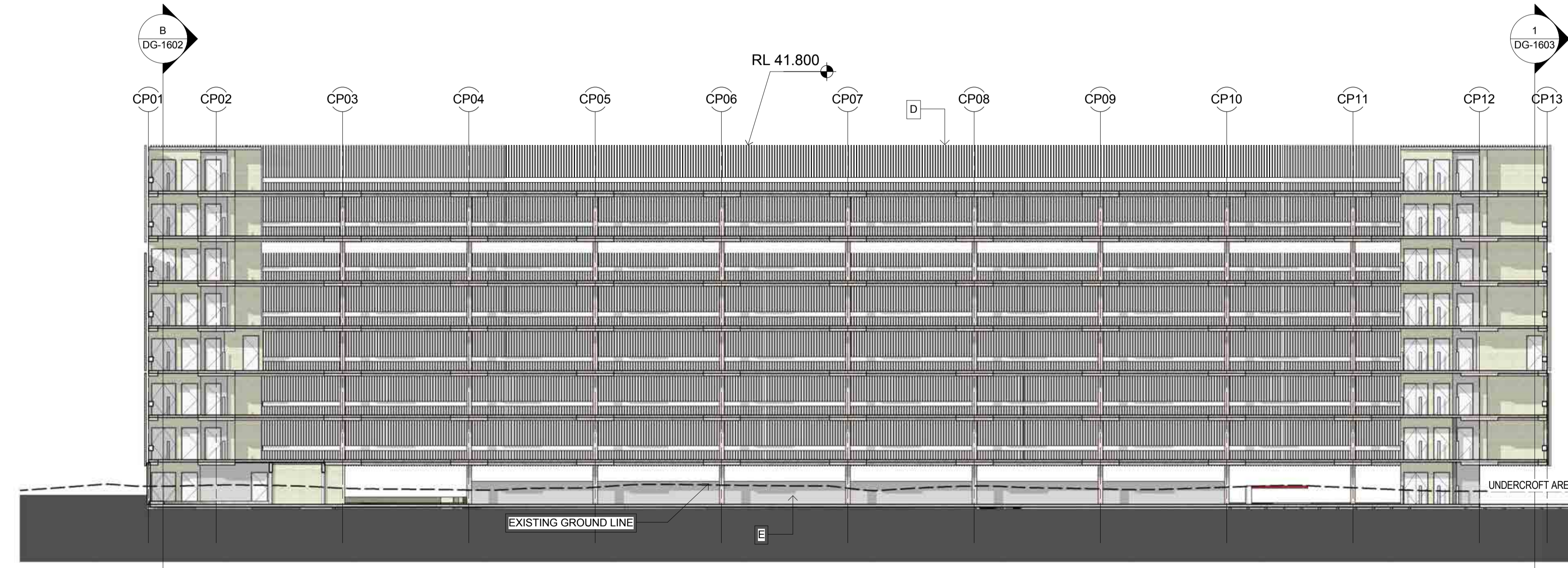
THIS DOCUMENT IS THE COPYRIGHT OF THE HDR GROUP (NSW) PTY LTD
 ALL THE INFORMATION ILLUSTRATED ON THIS DOCUMENT IS TO BE CHECKED AND VERIFIED ON SITE
 IN THE EVENT OF DISCREPANCIES REFER TO ARCHITECT PRIOR TO COMMENCEMENT OF THE WORK.
 DO NOT SCALE DRAWINGS ELECTRONICALLY OR MANUALLY.

REV	DESCRIPTION	DRAWN	CHECK	DATE
1	PRELIMINARY COSTING ISSUE	JH	AB	05/08/2015
2	COSTING ISSUE	JH	AB	07/08/2015
3	FINAL ISSUE	AB	AF	08/09/2015
4	FINAL STATUS	AB	AF	09/09/2015
5	FINAL STATUS	AB	AF	11/09/2015
6	SSD DRAFT	RT	AF	9/10/2015
7	SSD APPROVAL	RT	EG	29/10/2015

- MATERIALS LEGEND**
- A. FULL HEIGHT POWDER COATED ALUMINIUM EXTRUSIONS FIXED BACK TO SLAB EDGE
 TYPE : LOUVRECLAD BAROSSA SERIES OR SIMILAR WITH END CAPS
 SIZE: 50MM X 100MM X HEIGHT VARIES
 COLOUR LIGHT GREY
 - B. FULL HEIGHT POWDER COATED ALUMINIUM EXTRUSIONS FIXED BACK TO SLAB EDGE
 TYPE : LOUVRECLAD BAROSSA SERIES OR SIMILAR WITH END CAPS
 SIZE: 50MM X 100MM X HEIGHT VARIES
 COLOUR MID GREY
 - C. FULL HEIGHT POWDER COATED ALUMINIUM EXTRUSIONS FIXED BACK TO SLAB EDGE
 TYPE : LOUVRECLAD BAROSSA SERIES OR SIMILAR WITH END CAPS
 SIZE: 50MM X 100MM X HEIGHT VARIES
 COLOUR DARK GREY
 - D. FULL HEIGHT POWDER COATED ALUMINIUM EXTRUSIONS FIXED BACK TO SLAB EDGE
 TYPE : LOUVRECLAD BAROSSA SERIES OR SIMILAR WITH END CAPS
 SIZE: 50MM X 100MM X HEIGHT VARIES
 COLOUR YELLOW. LOCATION ON SIDES OF CENTRAL RAMP AND TO LEVEL 6
 - E. CLASS 2 CONCRETE FINISH WITH EQUALISED SHUTTER PANEL AND SEMI RECESSED TIE BOLT HOLE PATTERNS
 - F. EXTERNAL GRADE CONTIGUOUS COLOURED CORE COMPRESSED FIBRE CEMENT SHEETING. COLOUR DARK GREY
 - G. SINGLE GLAZED PANELS ON PATCH FITTINGS. NOM. 10mm SILICON SEALS AND JOINTS BETWEEN GLASS PANELS. FACTORY PRE FINISHED POWDERCOATED EXPOSED STEEL MULLIONS WITH POWDERCOATED GLEAT PLATES.
 - H. ACRYLIC/POLYCARBONATE TYPE PANEL SYSTEM ON INTERNAL POWDERCOATED FRAMING. UV RESISTANT. TRANSLUCENT WHITE. APPROXIMATELY 50% VLT SUBJECT TO SAMPLE AND PROTOTYPE REVIEW. NATURAL VENTILATION GAPS AS PER MECHANICAL ENGINEERS REQUIREMENTS. NATURAL VENTILATION GAPS TO BRIDGE ONLY.
 - I. INDICATIVE SIGNAGE AND SIGNAGE ZONES TO BE READ IN CONJUNCTION WITH WAYFINDING AND SIGNAGE DRAWINGS
- FACADE PATTERN TO BE APPROVED BY ARCHITECT



A SECTION D
 1 : 200



B SECTION E
 1 : 200

- DC- Level 6
RL 38.300
- DC- Level 5
RL 35.400
- DC- Level 4
RL 32.500
- DC- Level 3
RL 29.600
- DC- Level 2
RL 26.700
- DC- Level 1
RL 23.800
- DC- Ground
RL 20.900
- DC- Ground, Lower
RL 18.000

- DC- Level 6
RL 38.300
- DC- Level 5
RL 35.400
- DC- Level 4
RL 32.500
- DC- Level 3
RL 29.600
- DC- Level 2
RL 26.700
- DC- Level 1
RL 23.800
- DC- Ground
RL 20.900
- DC- Ground, Lower
RL 18.000

STATE SIGNIFICANT DEVELOPMENT
 APPROVAL
 NOT FOR CONSTRUCTION

CLIENT:
NSW HEALTH INFRASTRUCTURE
 North Sydney NSW 2060
 P: (02) 9978 5427
 F: (02) 8904 1377
 www.health.nsw.gov.au

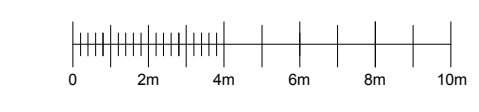
PROJECT MANAGER:
PRICE WATERHOUSE COOPERS
 Darling Park
 201 Sussex Street
 Sydney NSW 2000
 P: (02) 8266 2750
 F: (02) 8266 2780
 www.pwc.com.au

LEAD ARCHITECT:
HDR | RD + MSJ
 Lvl 1, 110 Walker Street
 North Sydney NSW 2060
 P: (02) 9956 2666
 F: (02) 9959 3015
 askhdr@hdr.rdcmsj.com

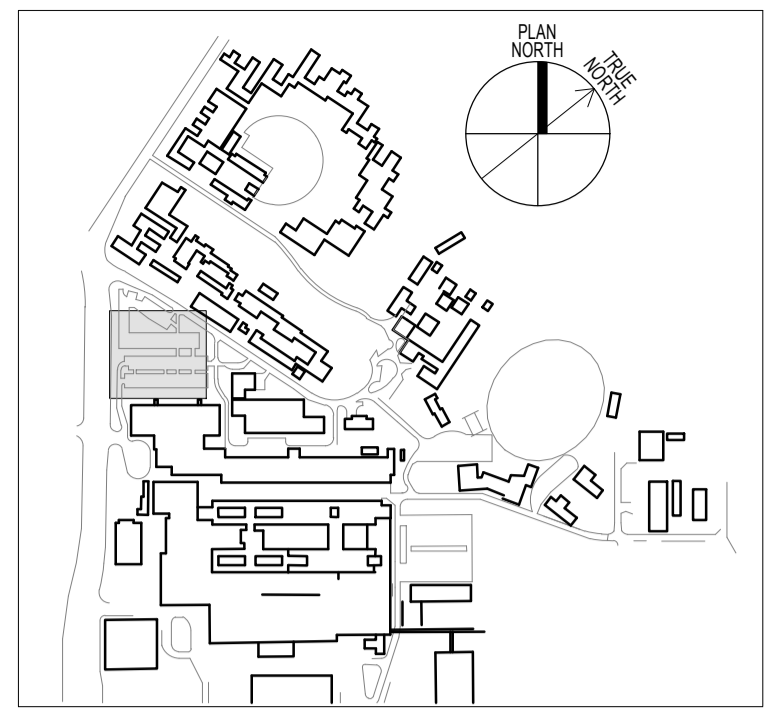
WESTMEAD MULTI STOREY CARPARK
 Cnr Institute Road and Darcy Road
 Westmead NSW 2145
Westmead Redevelopment
 Building health. Transforming lives.

DRAWING TITLE:
 SECTION D + E

SCALE:	DOCS NUMBER:	CHECKED:
1 : 200	5335	EG
PROJECT NUMBER:	DRAWING NUMBER:	ISSUE:
232186	MSC-HDR-AR-DG-1604 7	



C:\m\232186_MULTI DECK CARPARK_STAND ALONE_10.dwg
 11/11/2015 12:20:51 PM



THIS DOCUMENT IS THE COPYRIGHT OF THE HDR GROUP (NSW) Pty Ltd
 ALL THE INFORMATION ILLUSTRATED ON THIS DOCUMENT IS TO BE CHECKED AND VERIFIED ON SITE
 IN THE EVENT OF DISCREPANCIES REFER TO ARCHITECT PRIOR TO COMMENCEMENT OF THE WORK.
 DO NOT SCALE DRAWINGS ELECTRONICALLY OR MANUALLY.

REV	DESCRIPTION	DRAWN	CHECK	DATE
1	PRELIMINARY COSTING ISSUE	JH	AB	05/08/2015
2	COSTING ISSUE	JH	AB	07/08/2015
3	FINAL ISSUE	AB	AF	08/09/2015
4	FINAL STATUS	AB	AF	09/09/2015
5	FINAL STATUS	AB	AF	11/09/2015
6	SSD DRAFT	RT	AF	9/10/2015
7	SSD APPROVAL	RT	EG	29/10/2015

STATE SIGNIFICANT DEVELOPMENT
 APPROVAL
 NOT FOR CONSTRUCTION

CLIENT:
NSW HEALTH INFRASTRUCTURE



Level 6, 77 Pacific Highway
 North Sydney NSW 2060

P: (02) 9979 5427
 F: (02) 8904 1377
www.health.nsw.gov.au

PROJECT MANAGER:
PRICE WATERHOUSE COOPERS



Darling Park
 201 Sussex Street
 Sydney NSW 2000

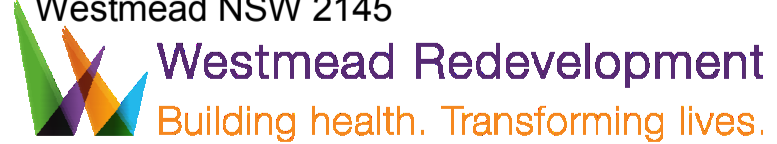
P: (02) 8266 2750
 F: (02) 8266 2780
www.pwc.com.au

LEAD ARCHITECT:
HDR | RD + MSJ

Lvl 1, 110 Walker Street
 North Sydney NSW 2060

P: (02) 9956 2666
 F: (02) 9959 3015
askhldr@hdrpricecoopers.com

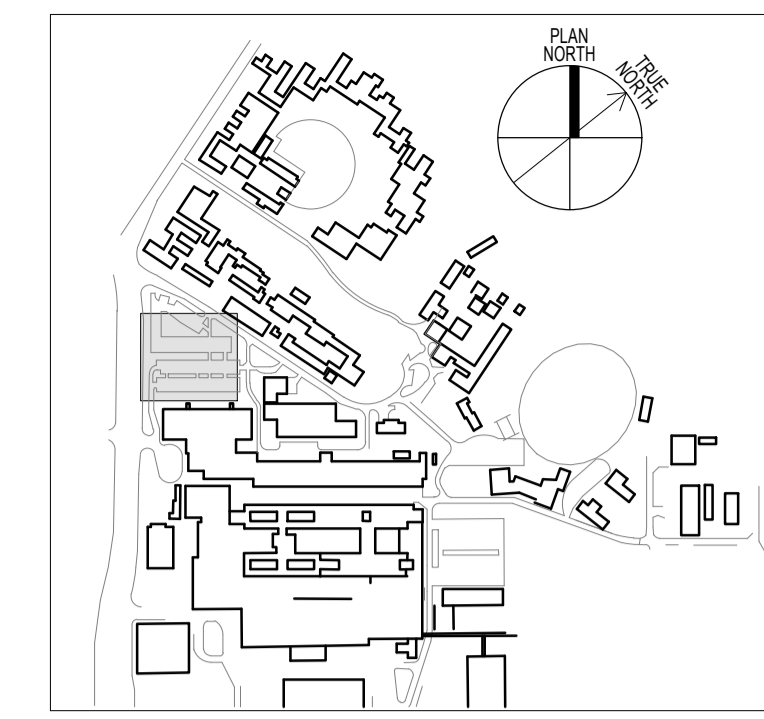
WESTMEAD MULTI STOREY CARPARK
 Cnr Institute Road and Darcy Road
 Westmead NSW 2145



DRAWING TITLE:
PERSPECTIVE 1

SCALE:	DOCS NUMBER:	CHECKED:
1: 200	5335	EG
PROJECT NUMBER:	DRAWING NUMBER:	ISSUE:
232186	MSC-HDR-AR-DG-1901 7	

VIEW FROM DARCY ROAD LOOKING NORTH



THIS DOCUMENT IS THE COPYRIGHT OF THE HOBBS GROUP (NSW) PTY LTD
 ALL THE INFORMATION ILLUSTRATED ON THIS DOCUMENT IS TO BE CHECKED AND VERIFIED ON SITE
 IN THE EVENT OF DISCREPANCIES REFER TO ARCHITECT PRIOR TO COMMENCEMENT OF THE WORK.
 DO NOT SCALE DRAWINGS ELECTRONICALLY OR MANUALLY.

REV	DESCRIPTION	DRAWN	CHECK	DATE
1	PRELIMINARY COSTING ISSUE	JH	AB	05/08/2015
2	COSTING ISSUE	JH	AB	07/08/2015
3	FINAL ISSUE	AB	AF	08/09/2015
4	FINAL STATUS	AB	AF	09/09/2015
5	FINAL STATUS	AB	AF	11/09/2015
6	SSD DRAFT	RT	AF	9/10/2015
7	SSD APPROVAL	RT	EG	29/10/2015



AERIAL PERSPECTIVE DIAGRAM

STATE SIGNIFICANT DEVELOPMENT
 APPROVAL
 NOT FOR CONSTRUCTION

CLIENT:
 NSW HEALTH
 INFRASTRUCTURE



Level 6, 77 Pacific Highway
 North Sydney NSW 2060

P: (02) 9978 5427
 F: (02) 8904 1377
 www.health.nsw.gov.au

PROJECT MANAGER:
 PRICE WATERHOUSE
 COOPERS



Darling Park
 201 Sussex Street
 Sydney NSW 2000

P: (02) 8266 2750
 F: (02) 8266 2780
 www.pwc.com.au

LEAD ARCHITECT:
HDR | RD + MSJ

Lvl 1, 110 Walker Street
 North Sydney NSW 2060

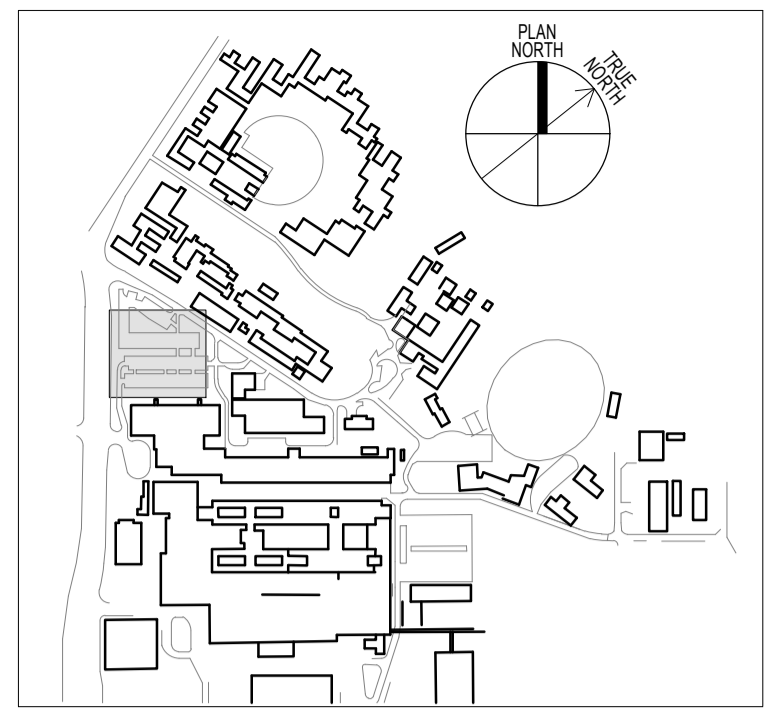
P: (02) 9956 2666
 F: (02) 9959 3015
 askhldr@hobbsgroup.com.au

WESTMEAD MULTI STOREY CARPARK
 Cnr Institute Road and Darcy Road
 Westmead NSW 2145



DRAWING TITLE:
 PERSPECTIVE DIAGRAM

SCALE:	DOHS NUMBER:	CHECKED:
1: 200	5335	EG
PROJECT NUMBER:	DRAWING NUMBER:	ISSUE:
232186	MSC-HDR-AR-DG-1902 7	




THIS DOCUMENT IS THE COPYRIGHT OF THE HOBBS GROUP (NSW) PTY LTD
 ALL THE INFORMATION ILLUSTRATED ON THIS DOCUMENT IS TO BE CHECKED AND VERIFIED ON SITE
 IN THE EVENT OF DISCREPANCIES REFER TO ARCHITECT PRIOR TO COMMENCEMENT OF THE WORK.
 DO NOT SCALE DRAWINGS ELECTRONICALLY OR MANUALLY.

REV	DESCRIPTION	DRAWN	CHECK	DATE
1	PRELIMINARY COSTING ISSUE	JH	AB	05/08/2015
2	COSTING ISSUE	JH	AB	07/08/2015
3	FINAL ISSUE	AB	AF	08/09/2015
4	FINAL STATUS	AB	AF	09/09/2015
5	FINAL STATUS	AB	AF	11/09/2015
6	SSD DRAFT	RT	AF	9/10/2015
7	SSD APPROVAL	RT	EG	29/10/2015

STATE SIGNIFICANT DEVELOPMENT
 APPROVAL
 NOT FOR CONSTRUCTION

CLIENT:
NSW HEALTH INFRASTRUCTURE 

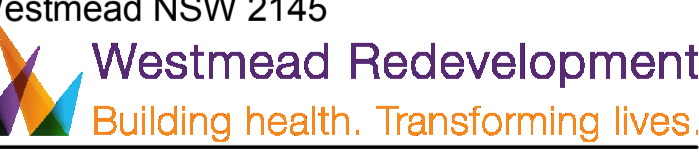
Level 6, 77 Pacific Highway
 North Sydney NSW 2060
 P: (02) 9979 5427
 F: (02) 8904 1377
 www.hinfra.health.nsw.gov.au

PROJECT MANAGER:
PRICE WATERHOUSE COOPERS 

Darling Park
 201 Sussex Street
 Sydney NSW 2000
 P: (02) 8266 2750
 F: (02) 8266 2780
 www.pwc.com.au

LEAD ARCHITECT:
HDR | RD + MSJ

Lvl 1, 110 Walker Street
 North Sydney NSW 2060
 P: (02) 9956 2666
 F: (02) 9959 3015
 askhldr@hdrpricecoopers.com

WESTMEAD MULTI STOREY CARPARK
 Cnr Institute Road and Darcy Road
 Westmead NSW 2145

 Building health. Transforming lives.

DRAWING TITLE:
 PERSPECTIVE 3

SCALE: 1: 200	DOHS NUMBER: 5335	CHECKED: EG
PROJECT NUMBER: 232186	DRAWING NUMBER: MSC-HDR-AR-DG-1903 7	ISSUE:

VIEW FROM INTERSECTION OF INSTITUTE ROAD AND DARCY ROAD LOOKING EAST

C:\m\232186_MULTI DECK CARPARK_STAND ALONE_10.dwg
 10/11/2015 9:38:14 PM