

Modification of Development Consent

Section 4.55(1A) of the *Environmental Planning and Assessment Act 1979*

As delegate of the Minister for Planning, I approve the modification of the development consent referred to in Schedule 1, subject to the conditions in Schedule 2.



Chris Ritchie
Director
Industry Assessments

Sydney 24 SEPTEMBER 2018

File: EF18/4755

SCHEDULE 1

Application No:	SSD 7256
Applicant:	ResourceCo RRF Pty Ltd
Consent Authority:	Minister for Planning
Development:	The construction and operation of a Waste and Resource Management Facility to convert up to 250,000 tpa of waste material into Process Engineered Fuel and reusable commodities such as metal, timber, concrete, bricks, rubble and soil
Date of Original Consent:	10 April 2017
Modification:	SSD 7256 MOD 1 – Enclosure of PEF baling and wrapping machinery

SCHEDULE 2

This consent is modified as follows:

- Delete the definitions for "Applicant" and "Secretary" and insert the following definitions in alphabetical order:

Applicant	ResourceCo RRF Pty Ltd, or any person carrying out any development to which this consent applies
Planning Secretary	Planning Secretary under the EP&A Act, or nominee
- Insert the following definition in alphabetical order:

Modification Assessments	The document assessing the environmental impact of a proposed modification of this consent and any other information submitted with the following modification applications made under the EP&A Act: SSD 7256 MOD 1 prepared by ResourceCo RRF Pty Ltd and dated 31 January 2018
--------------------------	---
- Delete all references to "Secretary" and replace with "Planning Secretary".

In Schedule 2 Part A Administrative Conditions

- Delete Condition A2 and replace with the following:

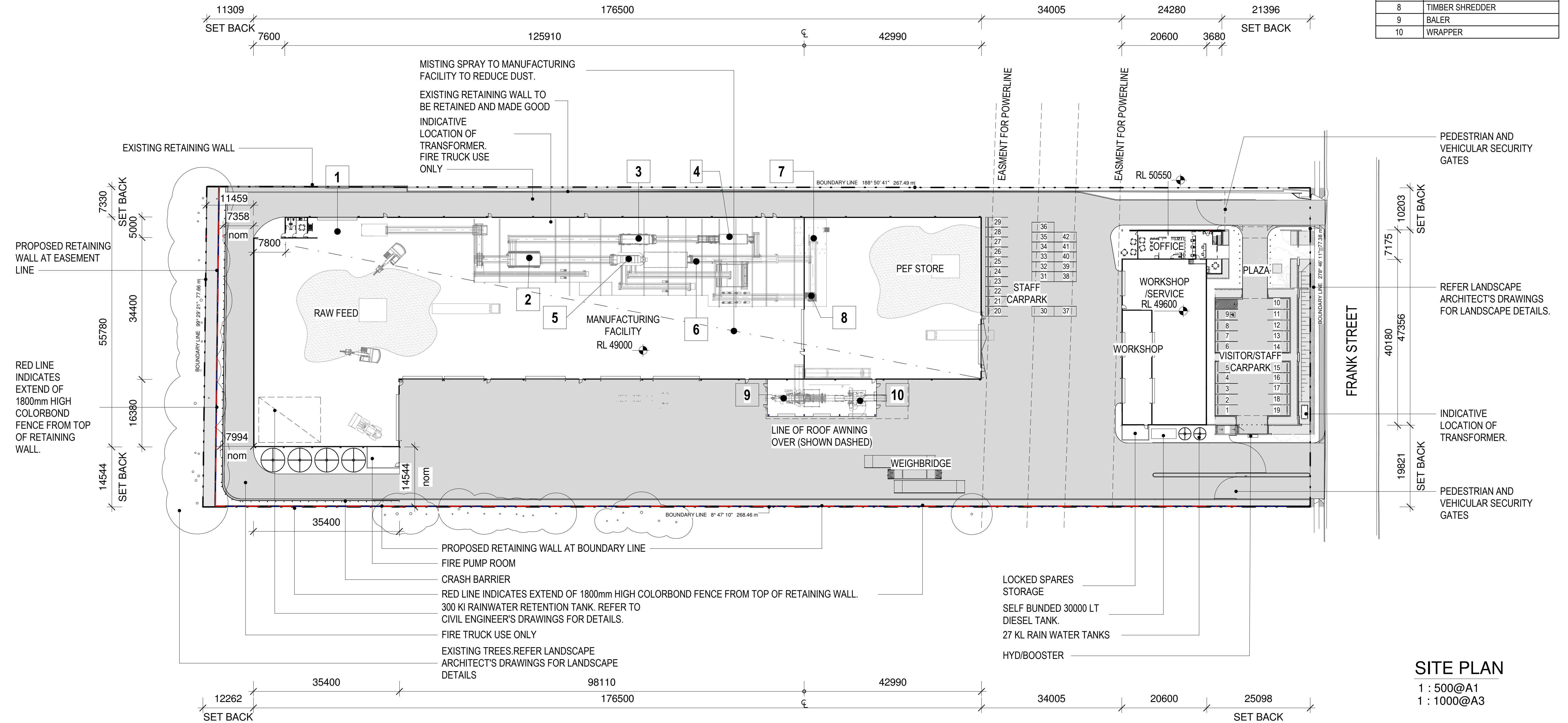
- A2. The Applicant, in acting on this consent, must carry out the development in accordance with the:
- (a) Development Application (SSD 7256);
 - (b) EIS;
 - (c) RTS;
 - (d) conditions in Schedule 2;
 - (e) Modification Assessments;
 - (f) development layout plans and drawings listed at Appendix 1; and
 - (g) the Management and Mitigation Measures as identified in Appendix 2.

In the Appendices

5. Replace Appendix 1.

APPENDIX 1 DEVELOPMENT LAYOUT PLANS

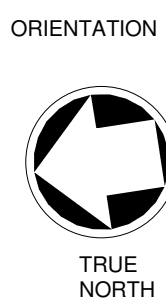
CODE	DESCRIPTION
1	PRIMARY SHREDDER
2	WASTE SCREEN
3	SECONDARY SCREEN
4	UNDERSIZE AIR SEPARATOR
5	PRIMARY AIR SEPARATOR
6	BALLISTIC SEPARATOR
7	PEF SHREDDER
8	TIMBER SHREDDER
9	BALER
10	WRAPPER



SITE PLAN

1 : 500@A1
1 : 1000@A3

ISSUE	DATE	DESCRIPTION	ISSUED BY	ISSUE	DATE	DESCRIPTION	ISSUED BY
P 3	19/01/2018	BALER INCLUSION ADDED	GR				
P 2	27/01/2016	FOR DEVELOPMENT APPROVAL	JD				
P 1	25/01/2016	FOR DEVELOPMENT APPROVAL	JD				



CLIENT
BELL Architecture
Suite 1, 77 King William Road Unley SA 5061 PO
Box 3091 Unley SA 5061 P 08 8373 3870 F 08
8357 2939



BELL

JOB TITLE
Resource Co - Wetherill Park Sydney
NSW

JOB NO
BA150078

DRAWING SCALE @ A1
1 : 500

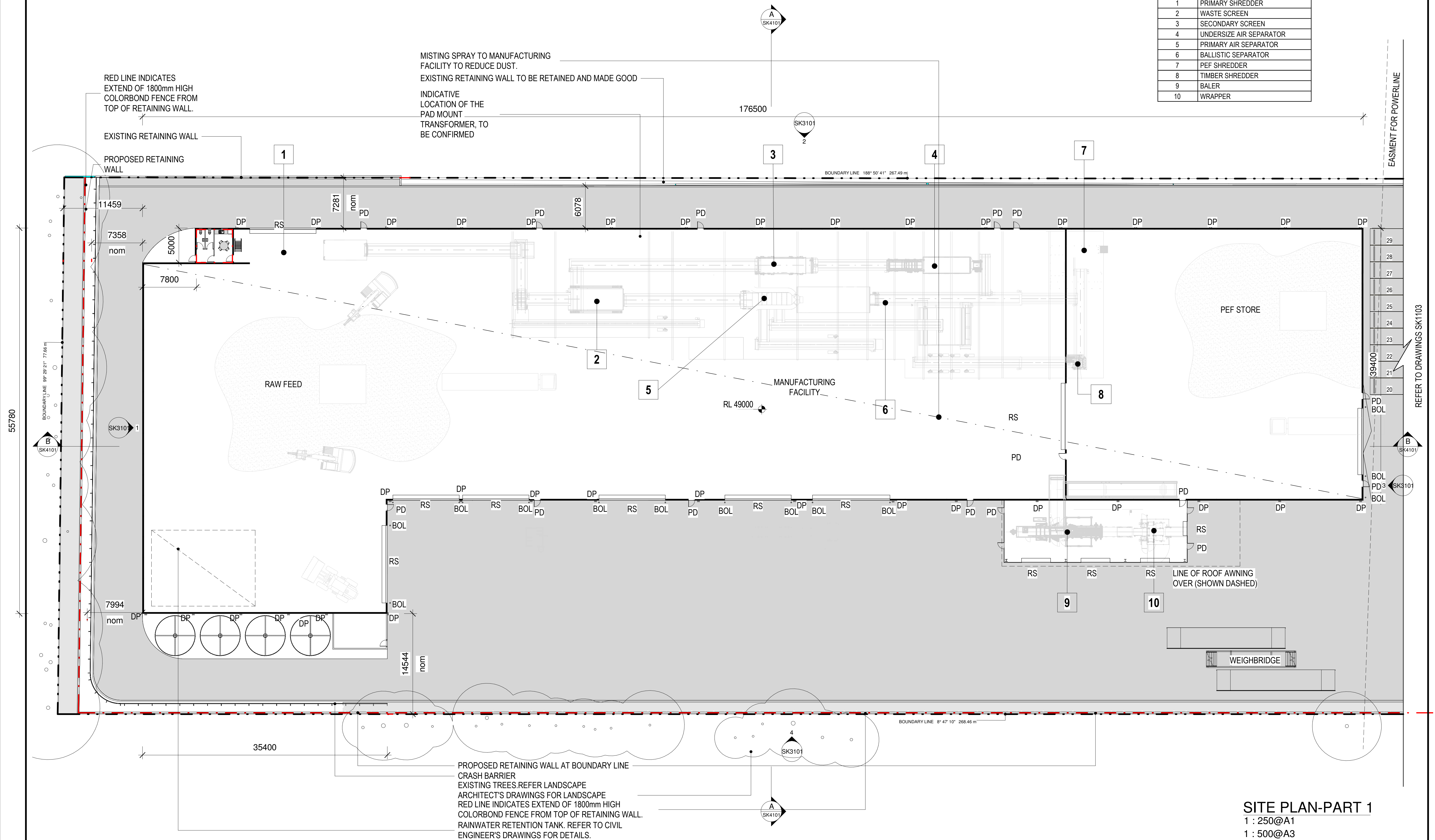
DRAWN BY
Author

DRAWING TITLE
SITE PLAN

DRAWING NO
SK1101

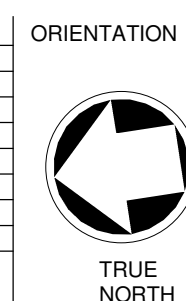
REVISION
P3

CODE	DESCRIPTION
1	PRIMARY SHREDDER
2	WASTE SCREEN
3	SECONDARY SCREEN
4	UNDERSIZE AIR SEPARATOR
5	PRIMARY AIR SEPARATOR
6	BALLISTIC SEPARATOR
7	PEF SHREDDER
8	TIMBER SHREDDER
9	BALER
10	WRAPPER



FOR DEVELOPMENT APPROVAL

P 3	19/01/2018	BALER INCLUSION ADDED		GR				
P 2	27/01/2016	FOR DEVELOPMENT APPROVAL		JD				
P 1	25/01/2016	FOR DEVELOPMENT APPROVAL		JD				
ISSUE	DATE	DESCRIPTION	ISSUED BY	ISSUE	DATE	DESCRIPTION	ISSUED BY	ISSUE



| CLIENT

ARCHITECT

BELL Architecture
Suite 1, 77 King William Road Unley SA 5061 PO
Box 3091 Unley SA 5061 P 08 8373 3870 F 08
8357 2939

RESOURCECO

BELL

JOB TITLE
Resource Co - Wetherill Park Sydney
NSW

JOB NO
BA150078

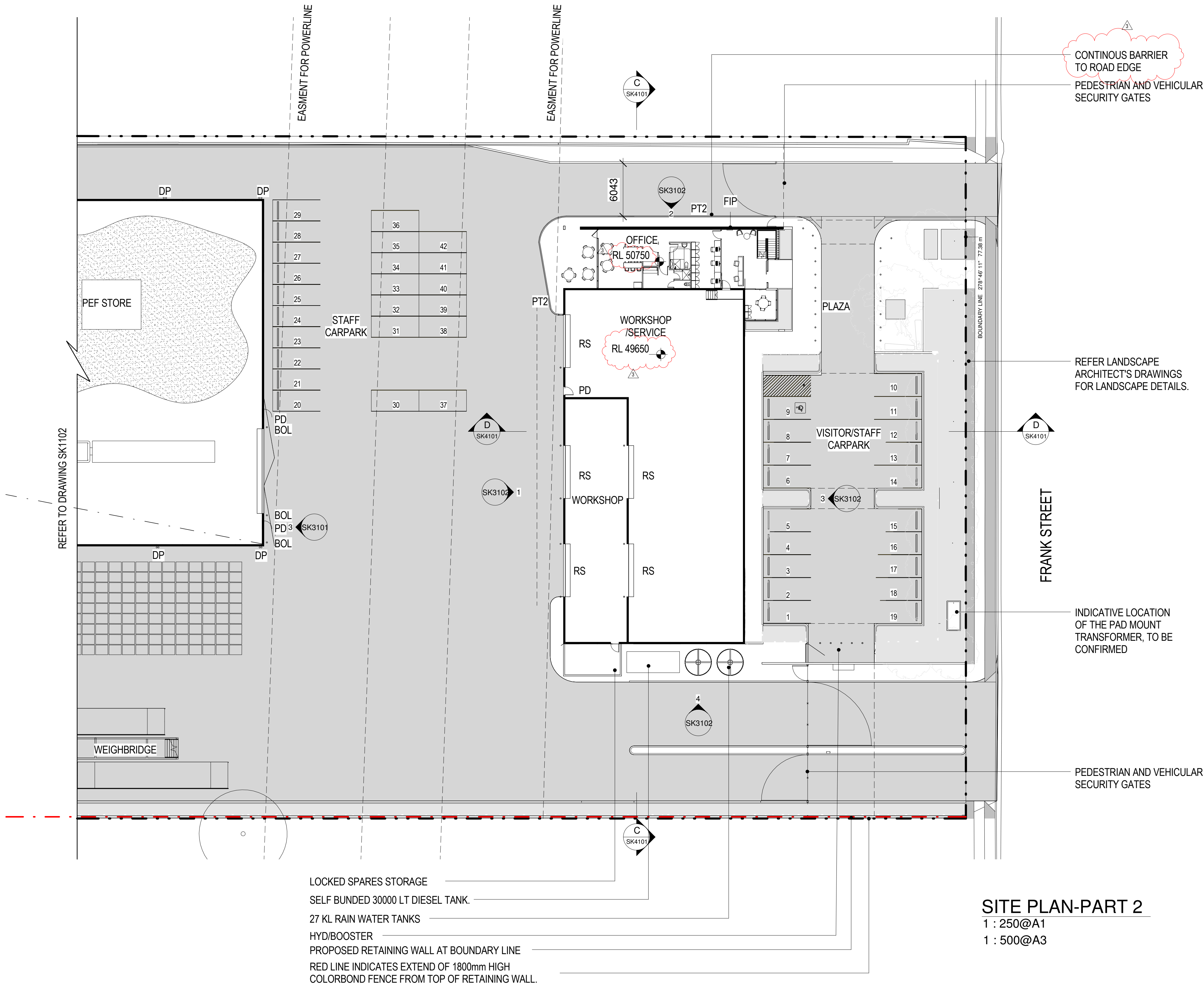
DRAWING SCALE @ A1
1 : 250

DRAWN BY	JD
----------	----

DRAWING TITLE
SITE PLAN DETAIL-PART 1

DRAWING NO
SK1102

REVISION
P3



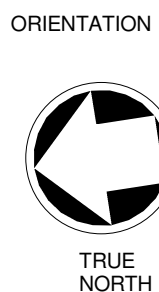
EXTERNAL MATERIAL SCHEDULE			
Manufacturing and Workshop Building			
CODE	ELEMENT	MATERIAL & FINISH	COLOUR
AFL	Apron Flashing	Folded metal sheet, Colorbond steel	Surfmist
BC	Barge Capping	Folded metal sheet, Colorbond steel	Surfmist
BG	Box Gutter	Folded metal sheet, Colorbond steel	To match RD
BOL	Bollard	Steel, painted	Safety Yellow
DP	Downpipe 150mm dia.	Folded metal sheet, Colorbond steel	Surfmist
EG	Eaves Gutter	Folded metal sheet, Colorbond steel	Surfmist
PC	Parapet Capping	Folded metal sheet, Colorbond steel	Surfmist
PCP	External Walls	Precast concrete panels	Natural concrete
PD	Personnel Doors	Metal faced solid core, painted	To match Surfmist
PT1	Exposed steel frame to awnings	Mild steel, painted	To match Surfmist
RC	Ridge Capping / Apex Capping	Folded metal sheet, Colorbond steel	Surfmist
RD	Roof Sheetting	Profiled Colorbond steel sheeting	Surfmist
RS	Roller Shutters	Powdercoat finish	Surfmist
SUMP+DP	Sump and downpipe	Folded metal sheet, Colorbond steel	To match DP
WC1	External Cladding	Profiled Colorbond steel sheeting	Surfmist

EXTERNAL MATERIAL SCHEDULE			
Office Building			
CODE	ELEMENT	MATERIAL & FINISH	COLOUR
ACP	Wall Cladding	Aluminium Composite Panel	Light Grey
AF	External Doors and Windows	Aluminium framing, powdercoat	Woodland Grey
BC	Barge Capping	Folded metal sheet, Colorbond steel	Surfmist
BG	Box Gutter	Folded metal sheet, Colorbond steel	To match RD
BOL	Bollard	Steel, painted	Safety Yellow
DP	Downpipe 150mm dia.	Folded metal sheet, Colorbond steel	Surfmist
EG	Eaves Gutter	Folded metal sheet, Colorbond steel	Surfmist
FG	Fixed Glazing	Glazed Panels	As Required
PC	Parapet Capping	Folded metal sheet, Colorbond steel	Surfmist
PCP1	External Walls	Concrete, Render finish	Light Grey
PCP2	External Walls	Precast concrete panels - rough form timber panel	Oxide Pigment
PT2	External Slating	Mild Steel, painted	To match Woodland Grey
RC	Ridge Capping / Apex Capping	Folded metal sheet, Colorbond steel	Surfmist
RD	Roof Sheetting	Profiled Colorbond steel sheeting	Surfmist
SUMP+DP	Sump and downpipe	Folded metal sheet, Colorbond steel	To match DP
TB	External Slating	Hardwood timber, stained	Natural Stain

FOR DEVELOPMENT APPROVAL

THIS DRAWING IS OWNED BY AND REMAINS THE PROPERTY OF BELL ARCHITECTURE. ALL RIGHTS RESERVED. REPRODUCTION OR USE OF THIS DRAWING WITHOUT THE PERMISSION OF THE ARCHITECT IS ILLEGAL. THE CLIENT IS LICENSED TO USE THIS DRAWING FOR THE WORKS SPECIFIC TO THIS SITE. SUBJECT TO THE FULL PAYMENT OF THE ARCHITECT'S FEES AND COMPLIANCE WITH THE TERMS AND CONDITIONS OF THE CLIENT/ARCHITECT AGREEMENT FOR THIS PROJECT. FIGURED DIMENSIONS SHALL BE USED. DO NOT SCALE THE DRAWING. THE CONTRACTOR SHALL VERIFY ALL DIMENSIONS ON SITE PRIOR TO THE COMMENCEMENT OF WORKS.
2/5/4/10/2016 Resource Co - Wetherill Park Sydney NSW02 - Drawing/01 - Sketch Design/01 - 23/08/2016 6:04:57 PM
Rev01/1 - Model/03 PLANNING MODEL/PLANNING AMENDMENT/BA150078-Resource Co - Wetherill Park Sydney NSW/PLANNING AMENDMENT/1

ISSUE	DATE	DESCRIPTION	ISSUED BY	ISSUE	DATE	DESCRIPTION	ISSUED BY
P 3	23/08/2016	PLANNING AMENDMENT	JD				
P 2	27/01/2016	FOR DEVELOPMENT APPROVAL	JD				
P 1	25/01/2016	FOR DEVELOPMENT APPROVAL	JD				



CLIENT
BELL Architecture
Suite 1, 77 King William Road Unley SA 5061 PO Box 3091 Unley SA 5061 P 08 8373 3870 F 08 8357 2939



BELL

JOB TITLE
Resource Co - Wetherill Park Sydney NSW

JOB NO
BA150078

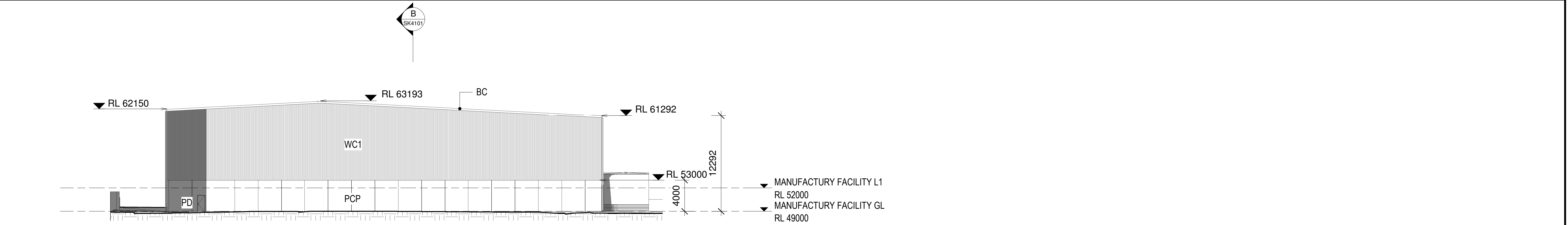
DRAWING SCALE @ A1
1 : 250

DRAWN BY
JD

DRAWING TITLE
SITE PLAN DETAIL-PART 2

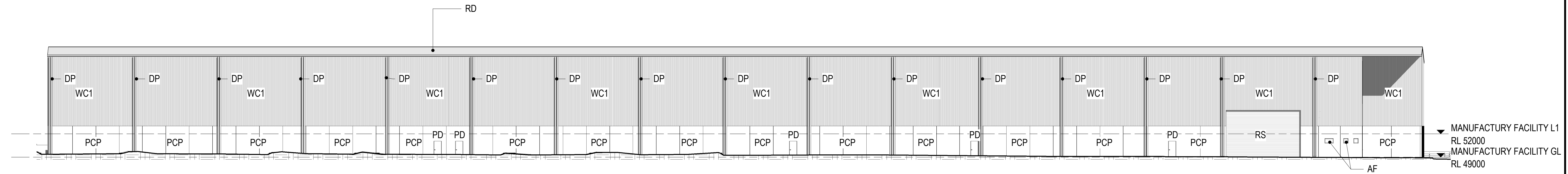
DRAWING NO
SK1103

REVISION
P3



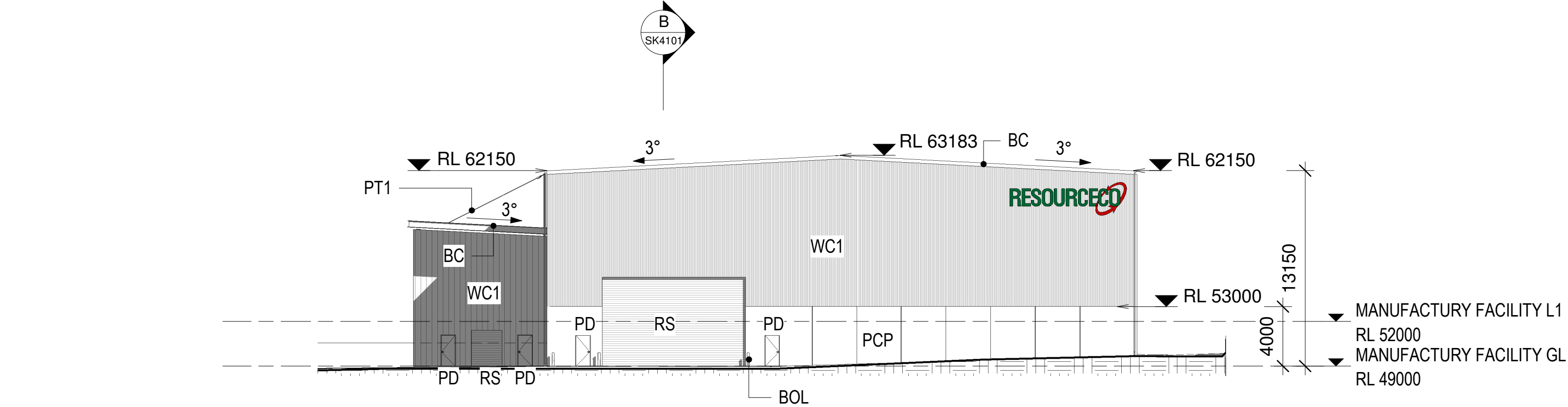
1 N.E.-MANUFACTURING FACILITY

1 : 250@A1
1 : 500@A3



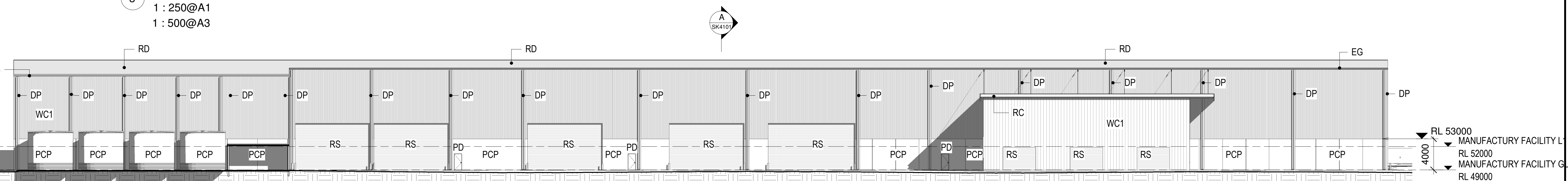
2 E.E.-MANUFACTURING FACILITY

1 : 250@A1
1 : 500@A3



3 S.E.-MANUFACTURING FACILITY

1 : 250@A1
1 : 500@A3



4 W.E.-MANUFACTURING FACILITY

1 : 250@A1
1 : 500@A3

EXTERNAL MATERIAL SCHEDULE			
Warehouse Building			
CODE	ELEMENT	MATERIAL & FINISH	COLOUR
AFL	Apron Flashing	Folded metal sheet, Colorbond steel	Surfmist
BC	Barge Capping	Folded metal sheet, Colorbond steel	Surfmist
BG	Box Gutter	Folded metal sheet, Colorbond steel	To match RD
BOL	Bollard	Steel, painted	Safety Yellow
DP	Downpipe 150mm dia.	Folded metal sheet, Colorbond steel	Surfmist
EG	Eaves Gutter	Folded metal sheet, Colorbond steel	Surfmist
PC	Parapet Capping	Folded metal sheet, Colorbond steel	Surfmist
PCP	External Walls	Precast concrete panels	Natural concrete
PD	Personnel Doors	Metal faced solid core, painted	To match Surfmist
PT1	Exposed steel frame to awnings	Mild steel, painted	To match Surfmist
RC	Ridge Capping / Apex Capping	Folded metal sheet, Colorbond steel	Surfmist
RD	Roof Sheetting	Profilied Colorbond steel sheeting	Surfmist
RS	Roller Shutters	Powdercoat finish	Deep Ocean
SUMP+DP	Sump and downpipe	Folded metal sheet, Colorbond steel	To match DP
WC1	External Cladding	Profilied Colorbond steel sheeting	Surfmist

FOR DEVELOPMENT APPROVAL

THIS DRAWING IS OWNED BY AND REMAINS THE PROPERTY OF BELL ARCHITECTURE. ALL RIGHTS RESERVED. REPRODUCTION OR USE OF THIS DRAWING WITHOUT THE PERMISSION OF THE ARCHITECT IS ILLEGAL. THE CLIENT IS LICENSED TO USE THIS DRAWING FOR THE WORKS SPECIFIC TO THIS SITE. SUBJECT TO THE FULL PAYMENT OF THE ARCHITECT'S FEES AND COMPLIANCE WITH THE TERMS AND CONDITIONS OF THE CLIENT/ARCHITECT AGREEMENT FOR THIS PROJECT, FIGURED DIMENSIONS SHALL BE USED. DO NOT SCALE THE DRAWINGS. THE CONTRACTOR SHALL VERIFY ALL DIMENSIONS ON SITE PRIOR TO THE COMMENCEMENT OF WORK.
S:\Projects\BA\150078-Resource Co - Wetherill Park Sydney NSW\02 - Drawings\01 - Sketch Design\01 - Rev001 - Model\02-PLANNING MODEL\BA150078-Resource Co - Wetherill Park Sydney NSW.dwg
19/01/2018 2:02:53 PM

ISSUE	DATE	DESCRIPTION	ISSUED BY	ISSUE	DATE	DESCRIPTION	ISSUED BY
P 3	19/01/2018	BALER INCLUSION ADDED	GR				
P 2	27/01/2018	FOR DEVELOPMENT APPROVAL	JD				
P 1	25/01/2018	FOR DEVELOPMENT APPROVAL	JD				

CLIENT

ARCHITECT

BELL Architecture
Suite 1, 77 King William Road Unley SA 5061 PO
Box 3091 Unley SA 5061 P 08 8373 3870 F 08
8357 2939



BELL

JOB TITLE

Resource Co - Wetherill Park Sydney
NSW

JOB NO

BA150078

DRAWING SCALE @ A1

1 : 250

DRAWN BY

JD

DRAWING TITLE

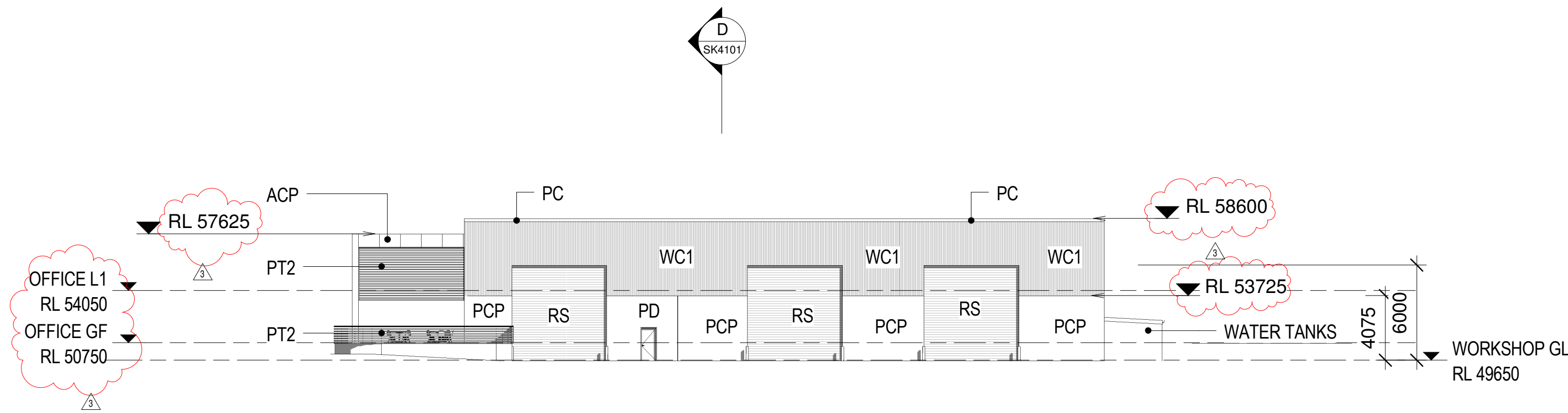
ELEVATIONS -
MANUFACTURING FACILITY

DRAWING NO

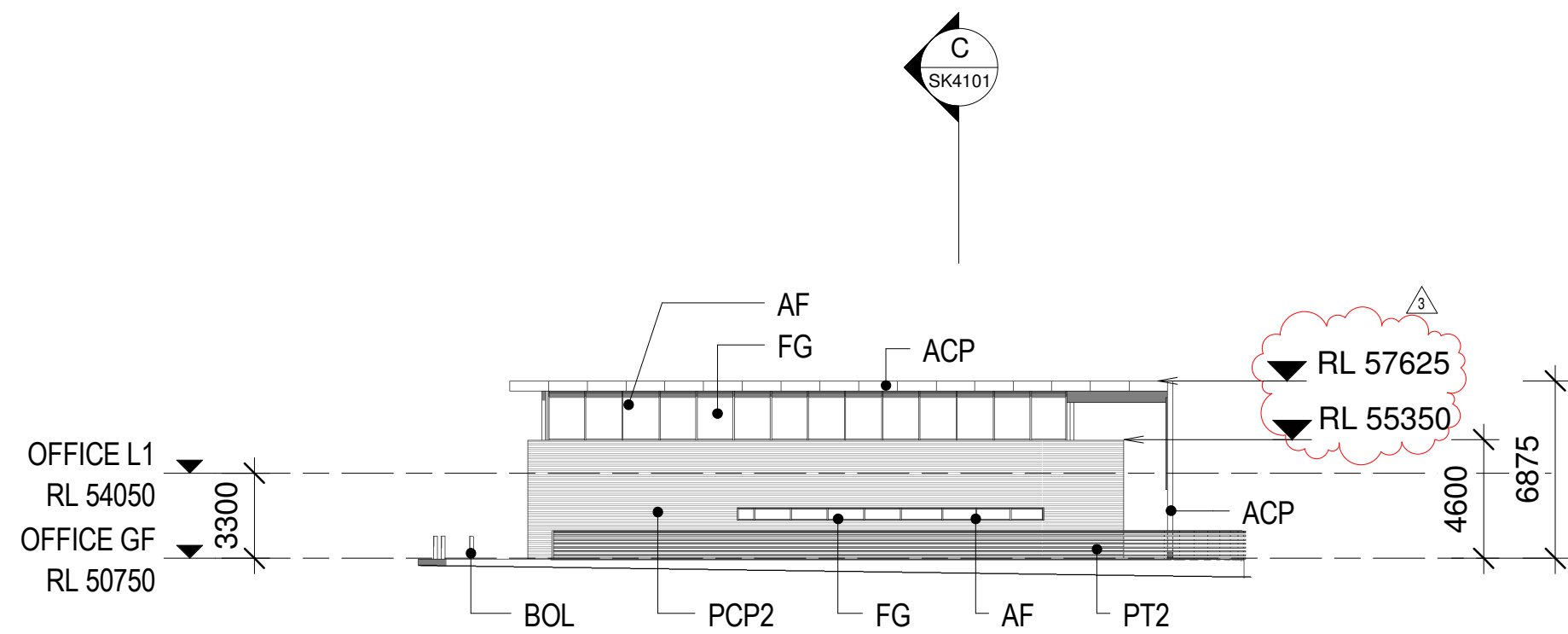
SK3101

REVISION

P3



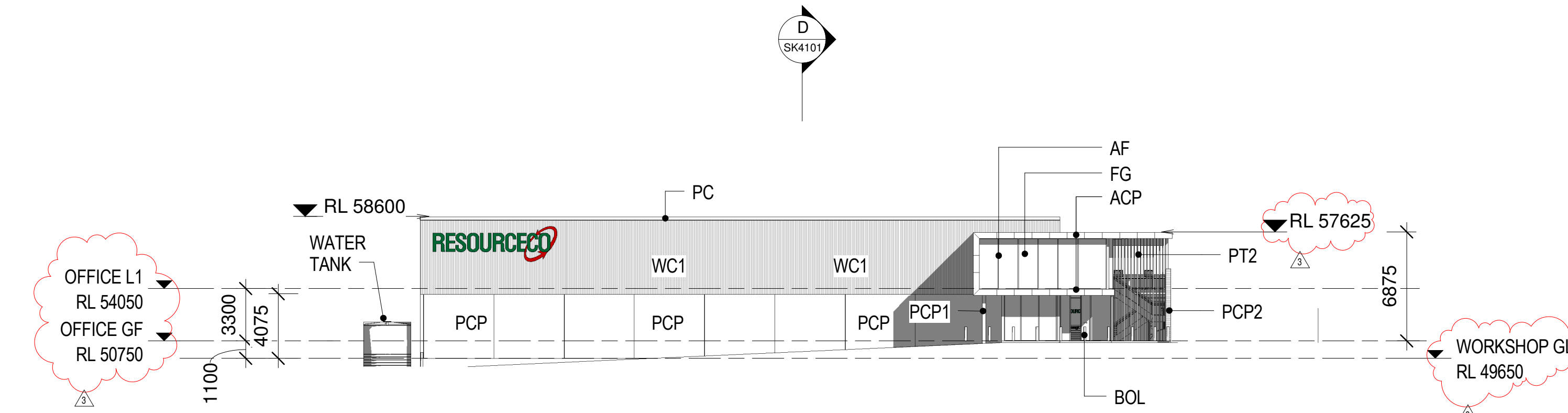
1 N.E.-OFFICE/WORKSHOP
1 : 250@A1
1 : 500@A3



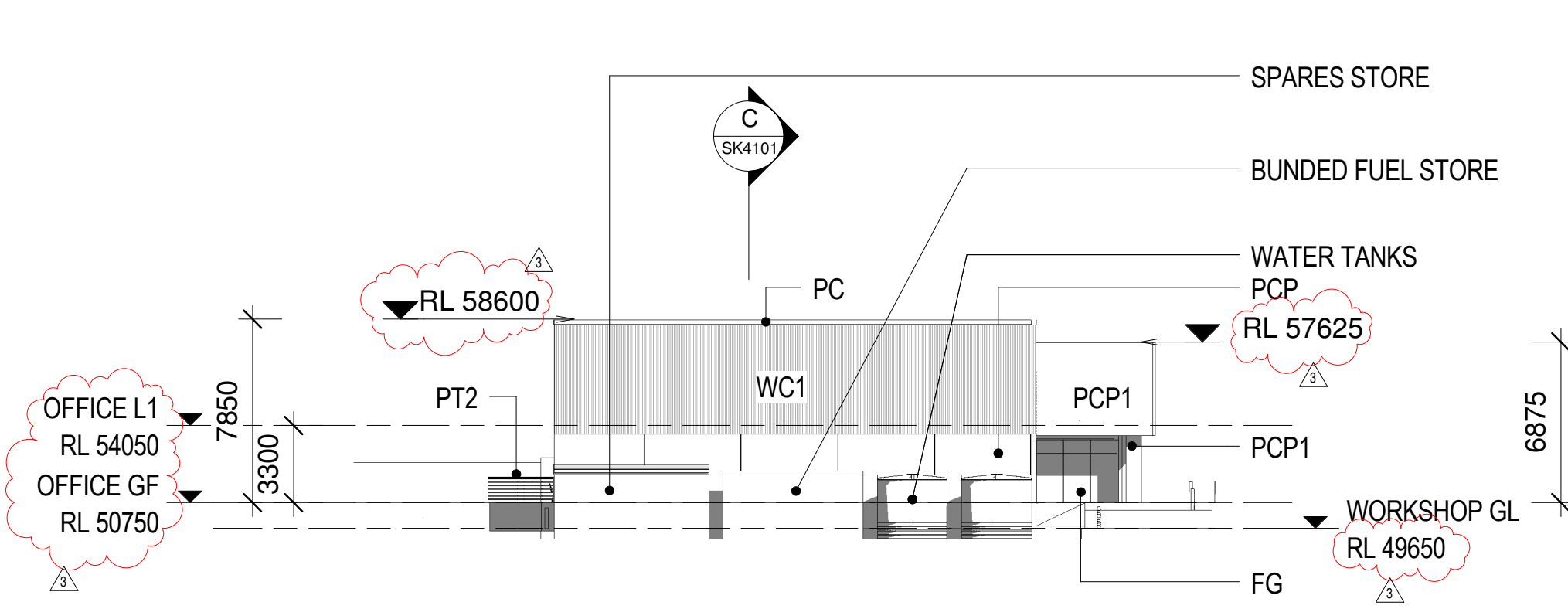
2 E.E.-OFFICE/WORKSHOP
1 : 250@A1
1 : 500@A3

EXTERNAL MATERIAL SCHEDULE			
Manufacturing and Workshop Building			
CODE	ELEMENT	MATERIAL & FINISH	COLOUR
AFL	Apron Flashing	Folded metal sheet, Colorbond steel	Surfmist
BC	Barge Capping	Folded metal sheet, Colorbond steel	Surfmist
BG	Box Gutter	Folded metal sheet, Colorbond steel	To match RD
BOL	Bollard	Steel, painted	Safety Yellow
DP	Downpipe 150mm dia.	Folded metal sheet, Colorbond steel	Surfmist
EG	Eaves Gutter	Folded metal sheet, Colorbond steel	Surfmist
PC	Parapet Capping	Folded metal sheet, Colorbond steel	Surfmist
PCP	External Walls	Precast concrete panels	Natural concrete
PD	Personnel Doors	Metal faced solid core, painted	To match Surfmist
PT1	Exposed steel frame to awnings	Mild steel, painted	To match Surfmist
RC	Ridge Capping / Apex Capping	Folded metal sheet, Colorbond steel	Surfmist
RD	Roof Sheetting	Profiled Colorbond steel sheeting	Surfmist
RS	Roller Shutters	Powdercoat finish	Surfmist
SUMP+DP	Sump and downpipe	Folded metal sheet, Colorbond steel	To match DP
WC1	External Cladding	Profiled Colorbond steel sheeting	Surfmist

EXTERNAL MATERIAL SCHEDULE			
Office Building			
CODE	ELEMENT	MATERIAL & FINISH	COLOUR
ACP	Wall Cladding	Aluminum Composite Panel	Light Grey
AF	External Doors and Windows	Aluminum framing, powdercoat	Woodland Grey
BC	Barge Capping	Folded metal sheet, Colorbond steel	Surfmist
BG	Box Gutter	Folded metal sheet, Colorbond steel	To match RD
BOL	Bollard	Steel, painted	Safety Yellow
DP	Downpipe 150mm dia.	Folded metal sheet, Colorbond steel	Surfmist
EG	Eaves Gutter	Folded metal sheet, Colorbond steel	Surfmist
FG	Fixed Glazing	Glazed Panels	As Required
PC	Parapet Capping	Folded metal sheet, Colorbond steel	Surfmist
PCP1	External Walls	Concrete, Render finish	Light Grey
PCP2	External Walls	Precast concrete panels - rough form timber panel	Oxide Pigment
PT2	External Slating	Mild Steel, painted	To match Woodland Grey
RC	Ridge Capping / Apex Capping	Folded metal sheet, Colorbond steel	Surfmist
RD	Roof Sheetting	Profiled Colorbond steel sheeting	Surfmist
SUMP+DP	Sump and downpipe	Folded metal sheet, Colorbond steel	To match DP
TB	External Slating	Hardwood timber, stained	Natural Stain



3 S.E.-OFFICE/WORKSHOP
1 : 250@A1
1 : 500@A3



4 W.E.-OFFICE/WORKSHOP
1 : 250@A1
1 : 500@A3

FOR DEVELOPMENT APPROVAL

THIS DRAWING IS OWNED BY AND REMAINS THE PROPERTY OF BELL ARCHITECTURE. ALL RIGHTS RESERVED. REPRODUCTION OR USE OF THIS DRAWING WITHOUT THE PERMISSION OF THE ARCHITECT IS ILLEGAL. THE CLIENT IS LICENSED TO USE THIS DRAWING FOR THE WORKS SPECIFIC TO THIS SITE, SUBJECT TO THE FULL PAYMENT OF THE ARCHITECT'S FEES AND COMPLIANCE WITH THE TERMS AND CONDITIONS OF THE CLIENT/ARCHITECT AGREEMENT FOR THIS PROJECT. FIGURED DIMENSIONS SHALL BE USED. DO NOT SCALE THE DRAWING. THE CONTRACTOR SHALL VERIFY ALL DIMENSIONS ON SITE PRIOR TO THE COMMENCEMENT OF WORK.
Z:\BA150078-Resource Co - Wetherill Park Sydney NSW\02 - Drawings\01 - Sketch Design\01 - 23/08/2016 6:05:08 PM
Rev001 - Modelled PLANNING MODEL/PLANNING AMENDMENT/BA150078-Resource Co - Wetherill Park Sydney NSW/PLANNING AMENDMENT\1

ISSUE	DATE	DESCRIPTION	ISSUED BY	ISSUE	DATE	DESCRIPTION	ISSUED BY
P 3	23/08/2016	PLANNING AMENDMENT	JD				
P 2	27/01/2016	FOR DEVELOPMENT APPROVAL	JD				
P 1	25/01/2016	FOR DEVELOPMENT APPROVAL	JD				

CLIENT

ARCHITECT

BELL Architecture
Suite 1, 77 King William Road Unley SA 5061 PO Box
3091 Unley SA 5061 P 08 8373 3870 F 08 8357 2939



BELL

JOB TITLE

Resource Co - Wetherill Park Sydney
NSW

JOB NO

BA150078

DRAWING SCALE @ A1

1 : 250

DRAWN BY

Author

DRAWING TITLE

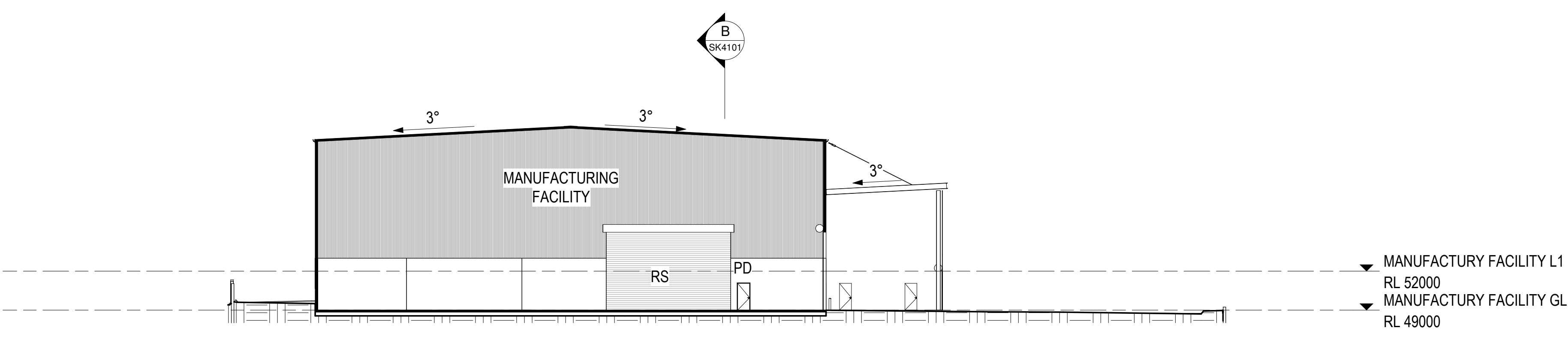
ELEVATIONS-OFFICE /
WORKSHOP

DRAWING NO

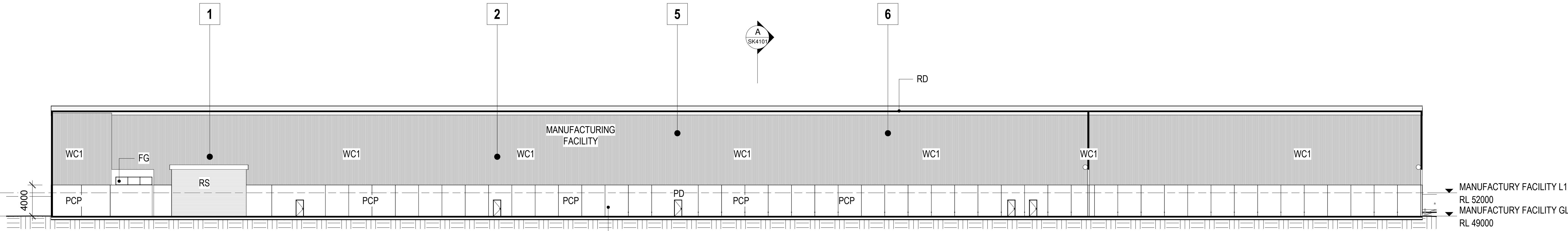
SK3102

REVISION

P3

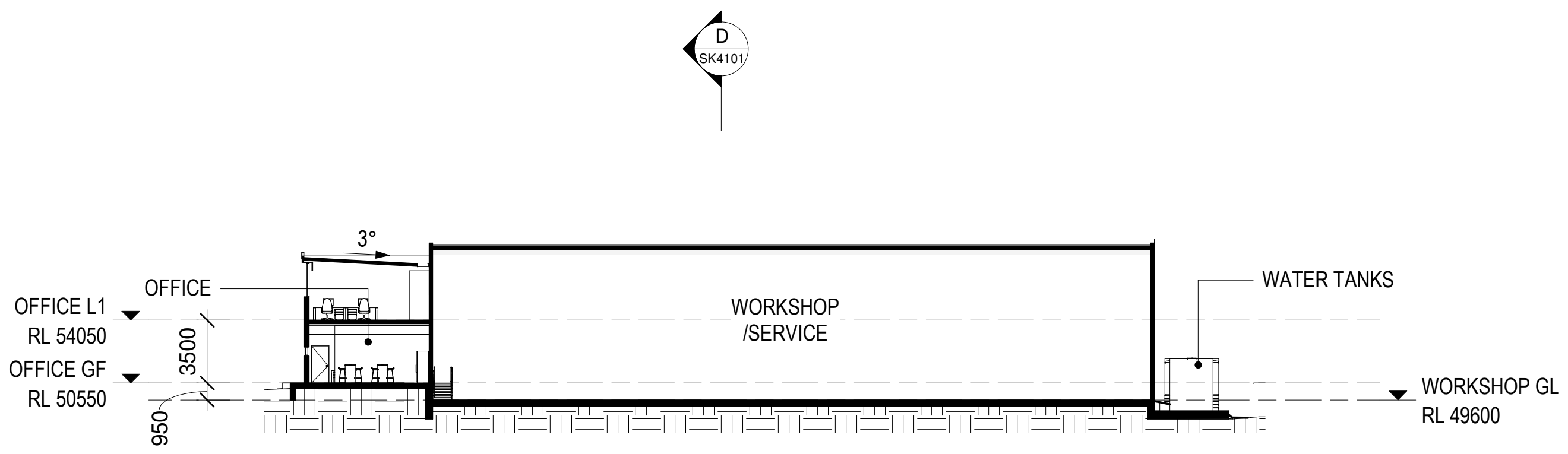


A BUILDING SECTION
1 : 250@A1
1 : 500@A3

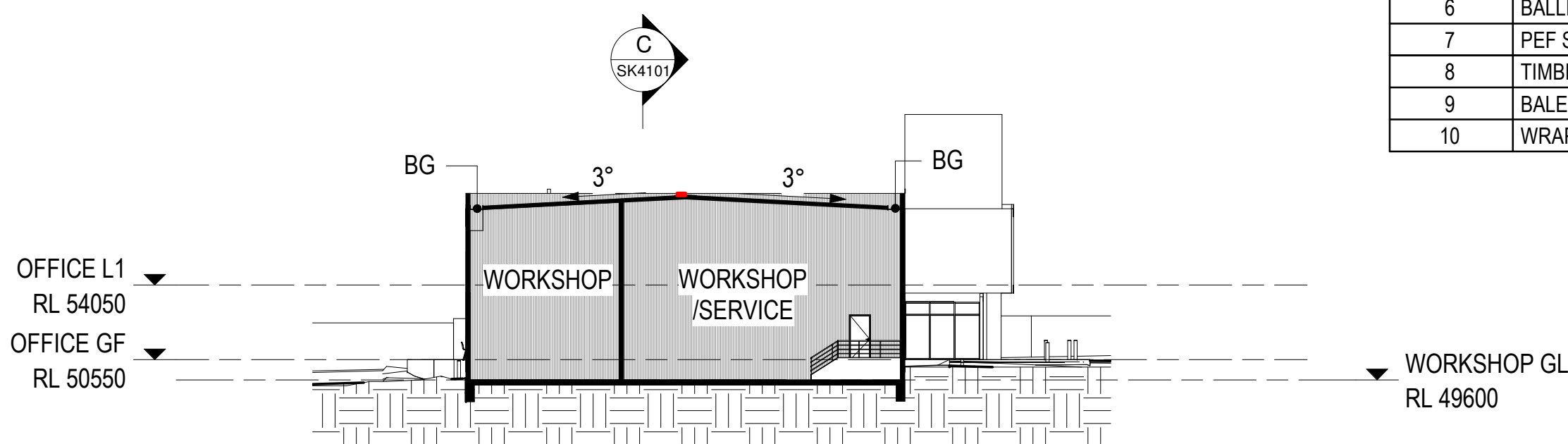


B BUILDING SECTION
1 : 250@A1
1 : 500@A3

CODE	DESCRIPTION
1	PRIMARY SHREDDER
2	WASTE SCREEN
3	SECONDARY SCREEN
4	UNDERSIZE AIR SEPARATOR
5	PRIMARY AIR SEPARATOR
6	BALLISTIC SEPARATOR
7	PEF SHREDDER
8	TIMBER SHREDDER
9	BALER
10	WRAPPER



C BUILDING SECTION
1 : 250@A1
1 : 500@A3



D BUILDING SECTION
1 : 250@A1
1 : 500@A3

FOR DEVELOPMENT APPROVAL

THIS DRAWING IS OWNED BY AND REMAINS THE PROPERTY OF BELL ARCHITECTURE. ALL RIGHTS RESERVED. REPRODUCTION OR USE OF THIS DRAWING WITHOUT THE PERMISSION OF THE ARCHITECT IS ILLEGAL. THE CLIENT IS LICENSED TO USE THIS DRAWING FOR THE WORKS SPECIFIC TO THIS SITE. SUBJECT TO THE FULL PAYMENT OF THE ARCHITECT'S FEES AND COMPLIANCE WITH THE TERMS AND CONDITIONS OF THE CLIENT/ARCHITECT AGREEMENT FOR THIS PROJECT, FIGURED DIMENSIONS SHALL BE USED. DO NOT SCALE THE DRAWINGS. THE CONTRACTOR SHALL VERIFY ALL DIMENSIONS ON SITE PRIOR TO THE COMMENCEMENT OF WORK.
S:\Projects\BA150078-Resource Co - Wetherill Park Sydney NSW\02_Drawing\01 - Sketch 19/01/2018 2:03:16 PM
Design\01 - Rev\01 - Model\02-PLANNING MODEL\BA150078-Resource Co - Wetherill Park Sydney NSW.rvt

ISSUE	DATE	DESCRIPTION	ISSUED BY	ISSUE	DATE	DESCRIPTION	ISSUED BY
P 3	19/01/2018	BALER INCLUSION ADDED	GR				
P 2	27/01/2016	FOR DEVELOPMENT APPROVAL	JD				
P 1	25/01/2016	FOR DEVELOPMENT APPROVAL	JD				

CLIENT



ARCHITECT

BELL Architecture
Suite 1, 77 King William Road Unley SA 5061 PO
Box 3091 Unley SA 5061 P 08 8373 3870 F 08
8357 2939



JOB TITLE

Resource Co - Wetherill Park Sydney
NSW

JOB NO

BA150078

DRAWING SCALE @ A1

1 : 250

DRAWN BY

JD

DRAWING TITLE

SECTIONS

DRAWING NO

SK4101

REVISION

P3