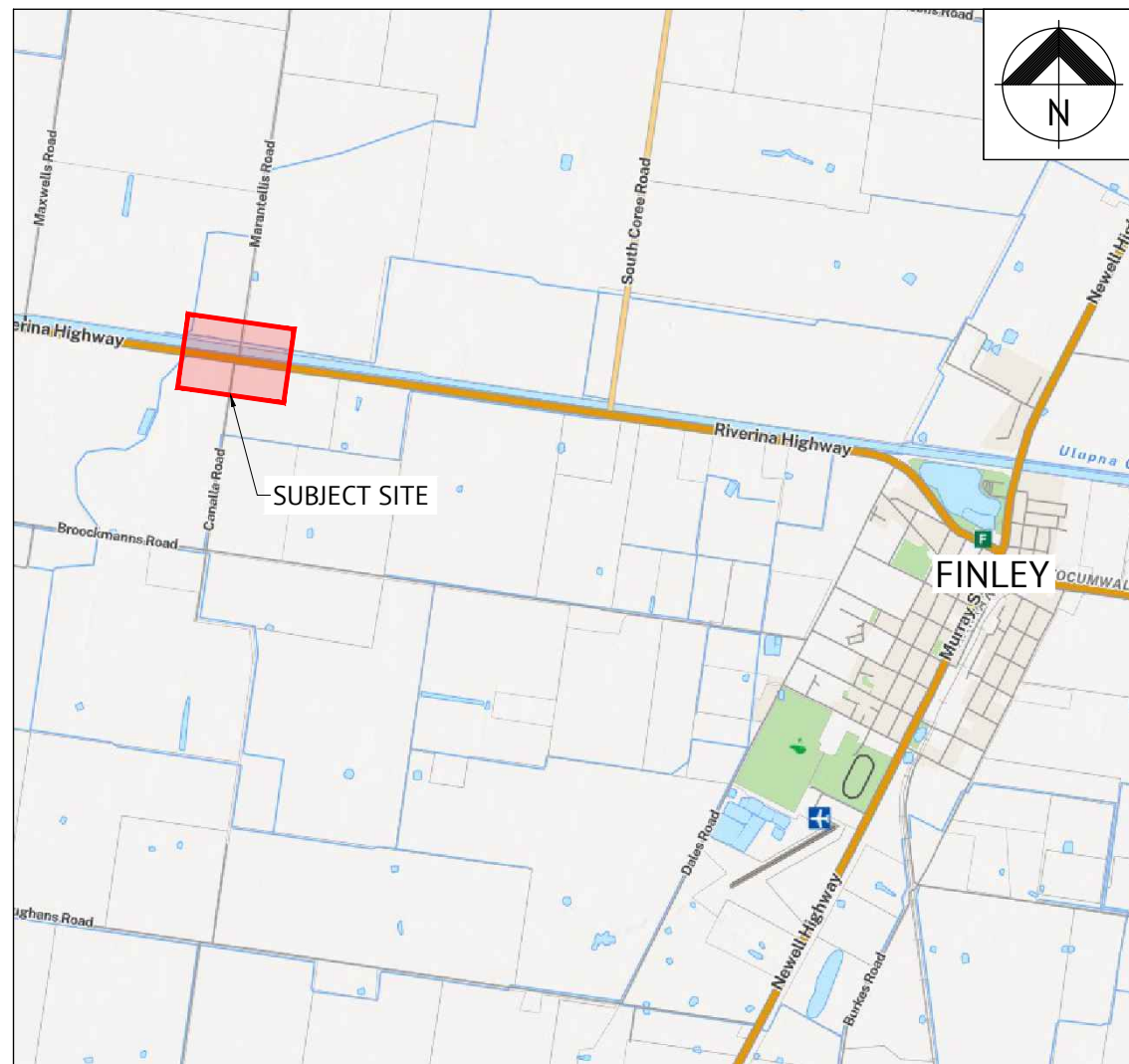


# FINLEY BESS

RIVERINA HIGHWAY, FINLEY 2713

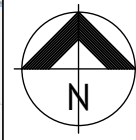
GRANSOLAR DEVELOPMENT AUSTRALIA PTY LTD

## BAL / BAR INTERSECTION CONCEPT PLAN - RIVERINA HIGHWAY, CANALLA ROAD & MARANTELLIS ROAD



LOCALITY PLAN

NTS



### DRAWING SCHEDULE

DRAWING NO.	DRAWING TITLE
C001	TITLEBLOCK AND SCHEDULE OF DRAWINGS
C002	PROPOSED INTERSECTION LAYOUT PLAN
C003	VEHICLE TURNING PATHS, SHEET 1 OF 4
C004	VEHICLE TURNING PATHS, SHEET 2 OF 4
C005	VEHICLE TURNING PATHS, SHEET 3 OF 4
C006	VEHICLE TURNING PATHS, SHEET 4 OF 4
C007	SAFE INTERSECTION SIGHT DISTANCE (SISD) PLAN, SHEET 1 OF 2
C008	SAFE INTERSECTION SIGHT DISTANCE (SISD) PLAN, SHEET 2 OF 2

ISSUED FOR REVIEW



ALBURY OFFICE  
598 MACAULEY STREET  
PO BOX 3055  
ALBURY, NSW 2640  
PH: (02) 60580100  
WEB: www.premise.com.au

DESIGNED  
PPO  
CHECKED  
PPO  
PROJECT MANAGER  
PPO

SCALE

ORIGINAL SHEET SIZE A1

CLIENT

GRANSOLAR DEVELOPMENT AUSTRALIA PTY LTD

PROJECT

FINLEY BESS

LOCATION

RIVERINA HIGHWAY, FINLEY 2713

SHEET TITLE

TITLEBLOCK AND SCHEDULE OF DRAWINGS

JOB CODE

P001993\_01

SHEET NUMBER

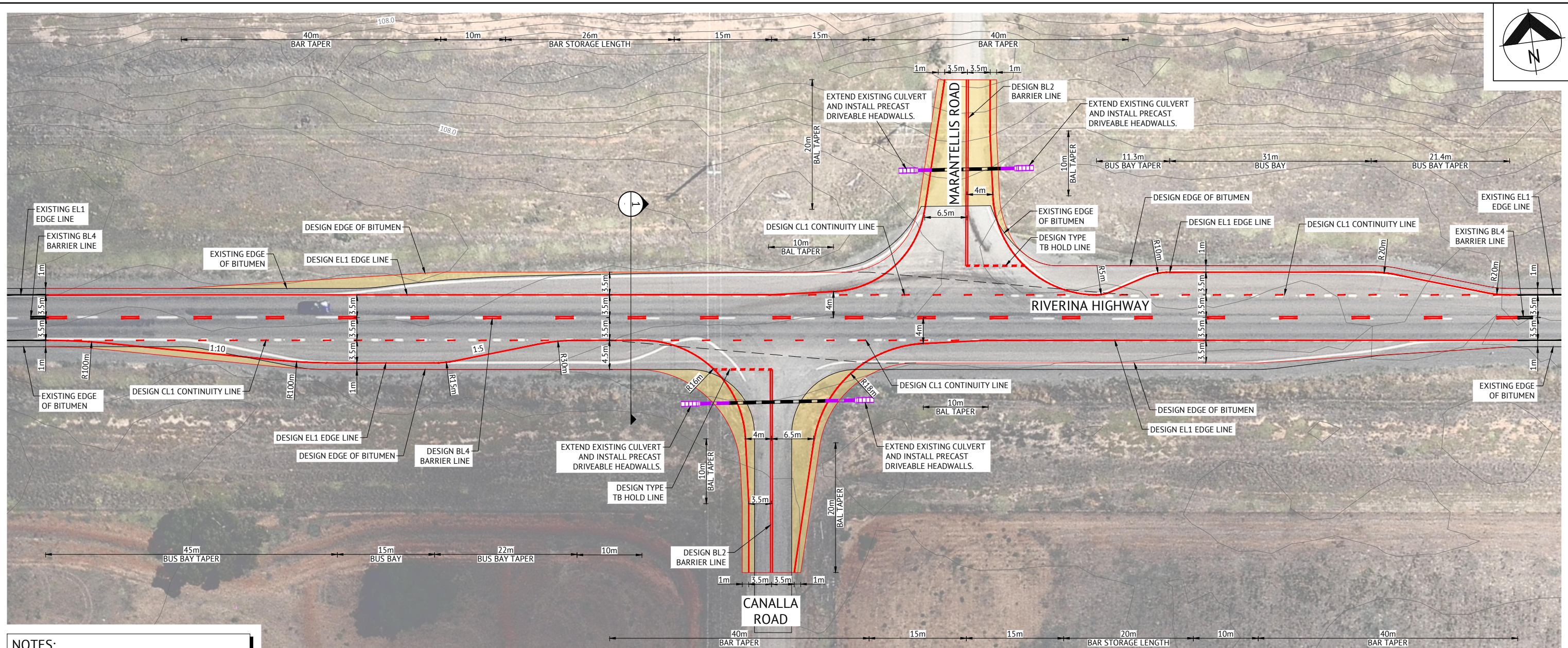
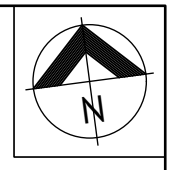
C001

REV

A

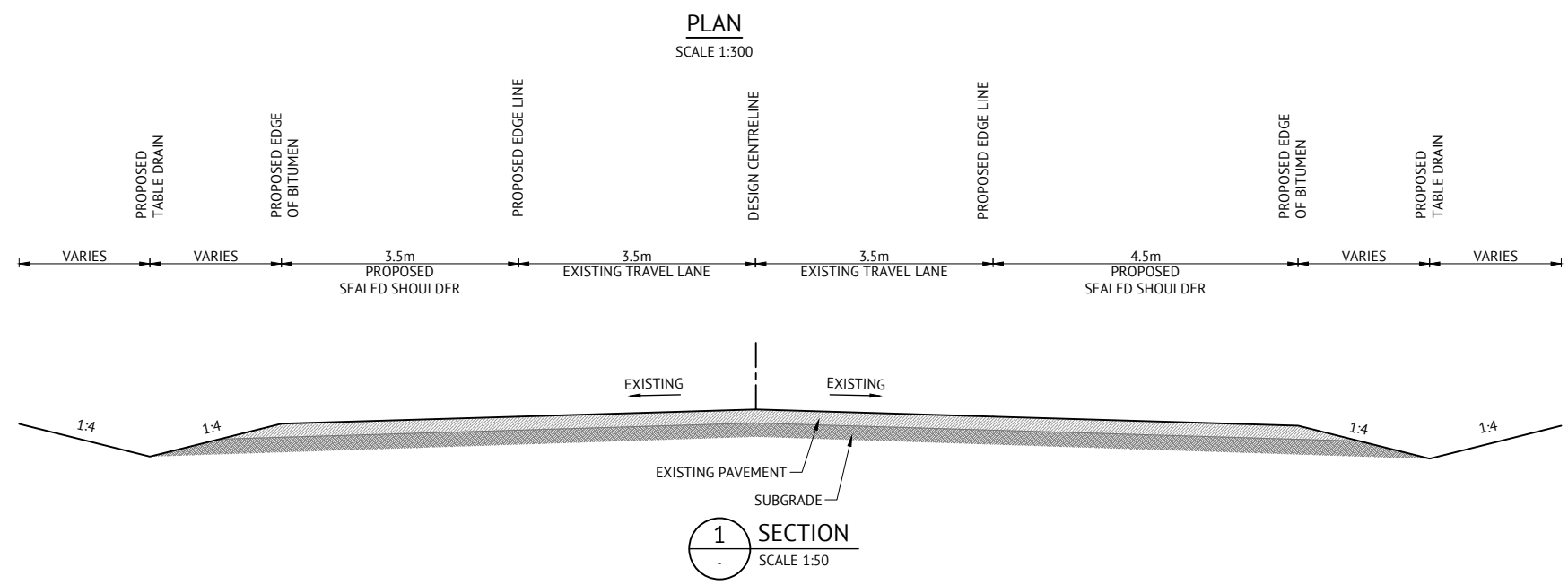
DATE	REV	DESCRIPTION	RB	PPO
06/11/2025	A	ISSUED FOR REVIEW	REC	APP

REVISIONS



- NOTES:**
1. THIS PLAN IS CONCEPTUAL ONLY AND SHALL NOT BE USED FOR CONSTRUCTION. THE INTERSECTION LAYOUT SHOWN IS SUBJECT TO DETAILED SURVEY & ENGINEERING DESIGN AND THE APPROVAL OF ARMIDALE REGIONAL COUNCIL & TNSW.
  2. THE INTERSECTION LAYOUT SHOWN IS IN ACCORDANCE WITH AUSTRROADS GUIDE TO ROAD DESIGN PART 4 (2021) AND PART 4A (2021) AND THE RELEVANT SUPPLEMENTS.
  3. DESIGN VEHICLE SPEED: 110km/h.

- LEGEND:**
- CONTOUR (ELVIS 0.25m INTERVAL)
  - PROPOSED NEW SEALED PAVEMENT
  - DESIGN BL2 BARRIER LINE
  - == DESIGN DL4 DIVIDING LINE
  - DESIGN EL1 EDGE LINE
  - - - DESIGN CL1 CONTINUITY LINE
  - - - DESIGN TYPE TB HOLD LINE
  - DESIGN EDGE OF BITUMEN
  - DESIGN STORMWATER PIPE WITH DRIVABLE HEADWALL
  - == EXISTING DL4 DIVIDING LINE
  - EXISTING EL1 EDGE LINE
  - EXISTING EDGE OF BITUMEN
  - EXISTING STORMWATER PIPE



**NOTE**  
FINAL PAVEMENT DESIGN IS SUBJECT TO GEOTECHNICAL INVESTIGATION AND INTERSECTION DETAILED DESIGN.



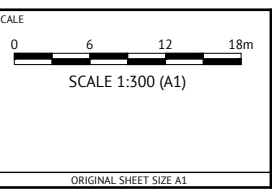
**ISSUED FOR REVIEW**

DATE	REV	DESCRIPTION	RB REC	PPO APP
06/11/2025	A	ISSUED FOR REVIEW		

**Premise**  
PART OF THE Arney GROUP

**ALBURY OFFICE**  
598 MACAULEY STREET  
PO BOX 3055  
ALBURY, NSW 2640  
PH: (02) 60580100  
WEB: www.premise.com.au

DESIGNED PPO  
CHECKED PPO  
PROJECT MANAGER PPO



CLIENT **GRANSOLAR DEVELOPMENT AUSTRALIA PTY LTD**

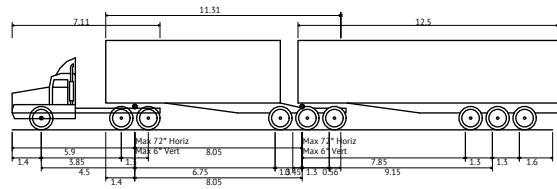
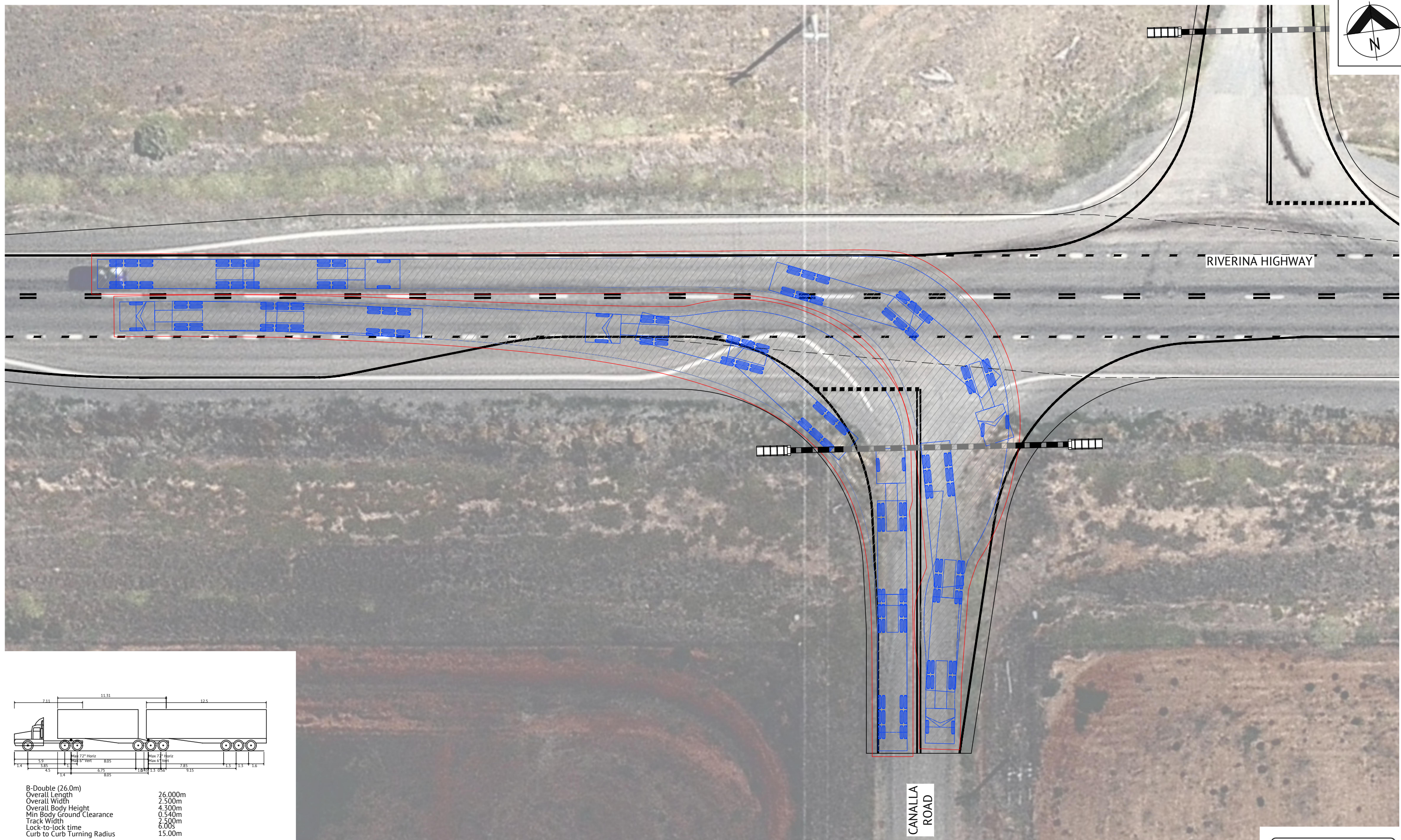
PROJECT **FINLEY BESS**

LOCATION **RIVERINA HIGHWAY, FINLEY 2713**

SHEET TITLE **PROPOSED INTERSECTION LAYOUT PLAN**

JOB CODE  
**P001993\_01**

SHEET NUMBER	REV
C002	A



B-Double (26.0m) 26.000m  
 Overall Length 2.500m  
 Overall Width 4.300m  
 Overall Body Height 0.540m  
 Min Body Ground Clearance 2.500m  
 Track Width 6.00s  
 Lock-to-lock time 15.00m  
 Curb to Curb Turning Radius

**26.0m LONG B-DOUBLE**  
NOT TO SCALE

**LEFT OUT OF AND RIGHT IN TO CANALLA ROAD**  
SCALE 1:150



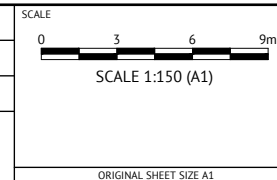
**ISSUED FOR REVIEW**

DATE	REV	DESCRIPTION	REVISIONS	RB REC	PPO APP
06/11/2025	A	ISSUED FOR REVIEW			

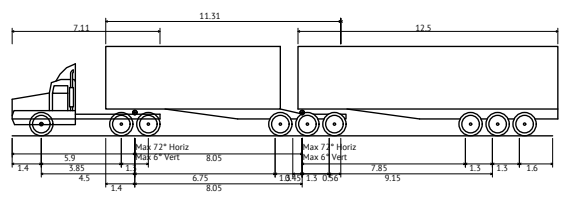
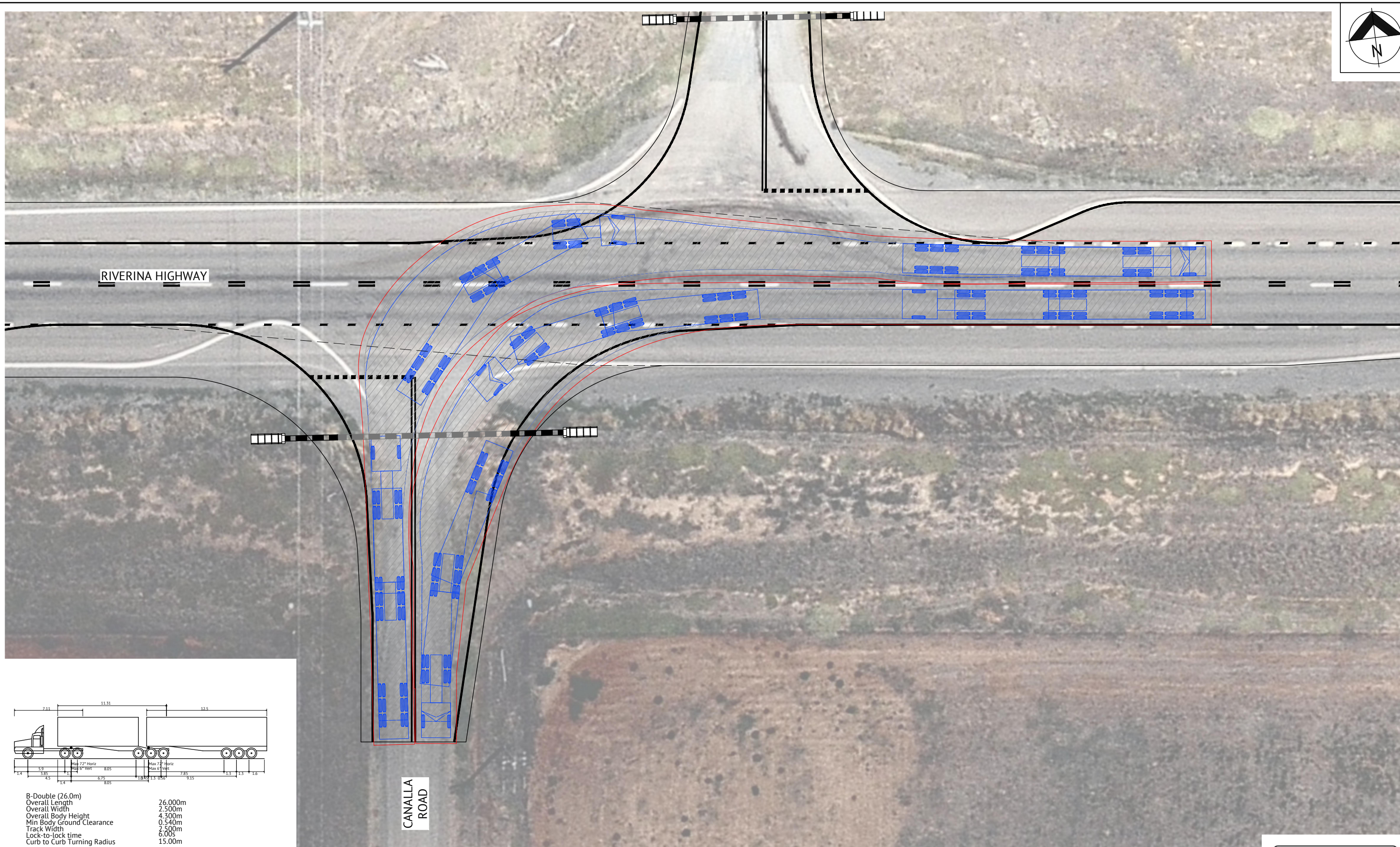
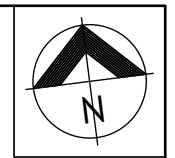


**ALBURY OFFICE**  
 598 MACAULEY STREET  
 PO BOX 3055  
 ALBURY, NSW 2640  
 PH: (02) 60580100  
 WEB: www.premise.com.au

DESIGNED	PPO
CHECKED	PPO
PROJECT MANAGER	PPO



CLIENT	GRANSOLAR DEVELOPMENT AUSTRALIA PTY LTD	JOB CODE	P001993_01
PROJECT	FINLEY BESS	SHEET NUMBER	C003
LOCATION	RIVERINA HIGHWAY, FINLEY 2713	REV	A
SHEET TITLE	VEHICLE TURNING PATHS, SHEET 1 OF 4		



B-Double (26.0m) Overall Length 26.000m  
 Overall Width 2.500m  
 Overall Body Height 4.300m  
 Min Body Ground Clearance 0.540m  
 Track Width 2.500m  
 Lock-to-lock time 6.00s  
 Curb to Curb Turning Radius 15.00m

**26.0m LONG B-DOUBLE**  
NOT TO SCALE

**LEFT IN TO AND RIGHT OUT OF CANALLA ROAD**  
SCALE 1:150



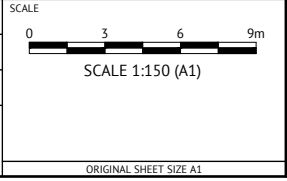
**ISSUED FOR REVIEW**

DATE	REV	DESCRIPTION	RB REC	PPO APP
06/11/2025	A	ISSUED FOR REVIEW		
REVISIONS				



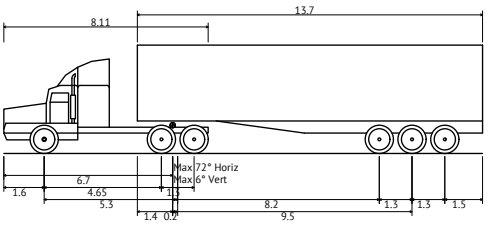
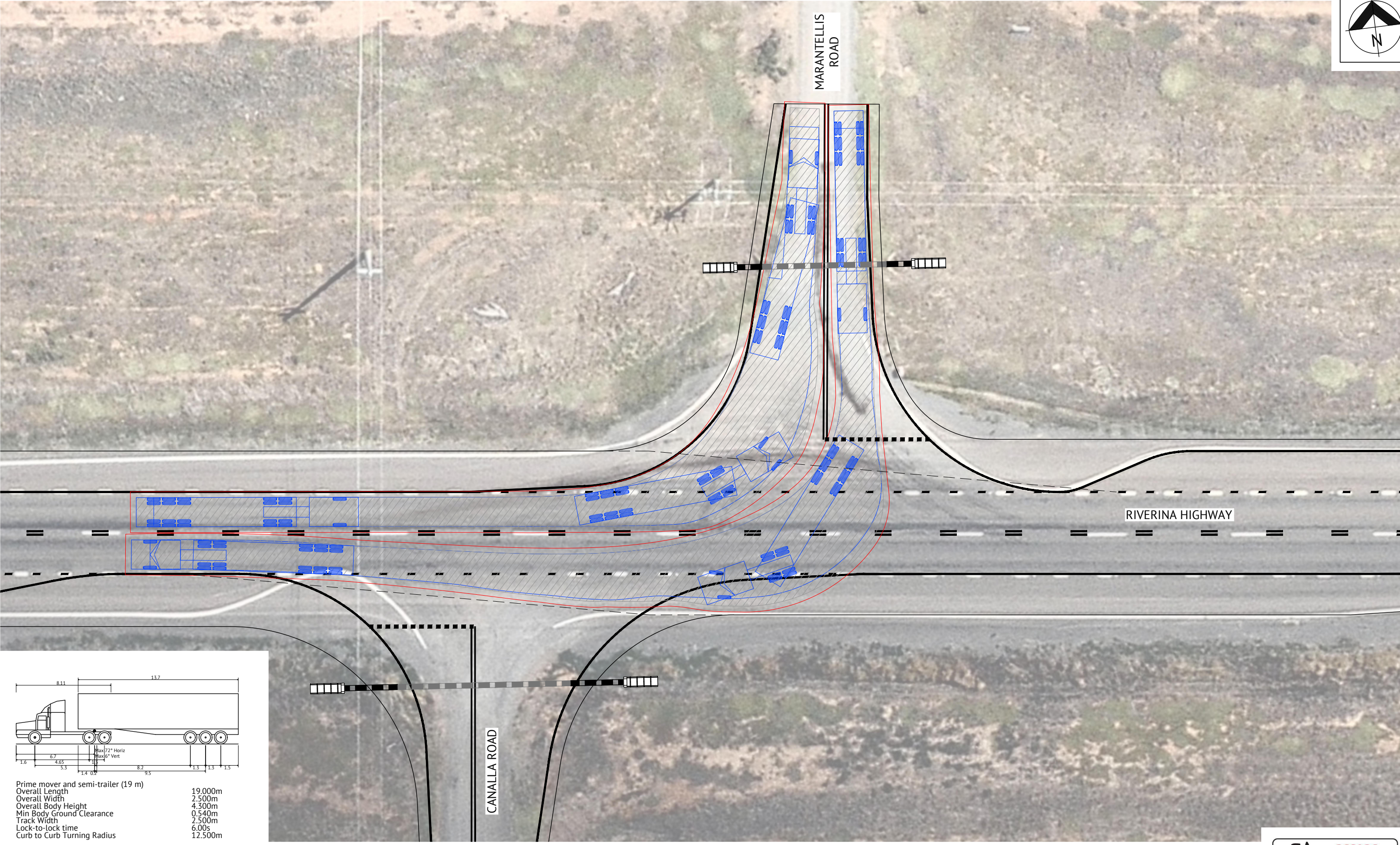
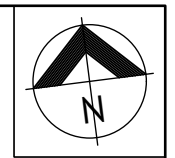
**ALBURY OFFICE**  
 598-MACAULEY STREET  
 PO BOX 3055  
 ALBURY, NSW 2640  
 PH: (02) 60580100  
 WEB: www.premise.com.au

DESIGNED	PPO
CHECKED	PPO
PROJECT MANAGER	PPO



CLIENT	GRANSOLAR DEVELOPMENT AUSTRALIA PTY LTD
PROJECT	FINLEY BESS
LOCATION	RIVERINA HIGHWAY, FINLEY 2713
SHEET TITLE	VEHICLE TURNING PATHS, SHEET 2 OF 4

JOB CODE	P001993_01
SHEET NUMBER	C004
REV	A



Prime mover and semi-trailer (19 m)  
 Overall Length 19.000m  
 Overall Width 2.500m  
 Overall Body Height 4.300m  
 Min Body Ground Clearance 0.540m  
 Track Width 2.500m  
 Lock-to-lock time 6.00s  
 Curb to Curb Turning Radius 12.500m

**19m LONG PRIME MOVER AND SEMI-TRAILER**  
 NTS

**LEFT IN TO AND RIGHT OUT OF MARANTELLIS ROAD**  
 SCALE 1:150

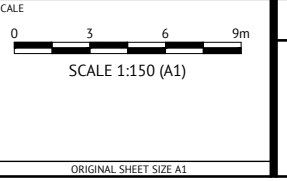


ISSUED FOR REVIEW			
DATE	REV	DESCRIPTION	REVISIONS
06/11/2025	A	ISSUED FOR REVIEW	



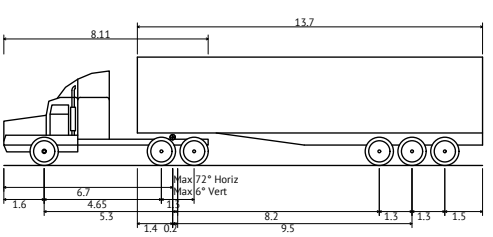
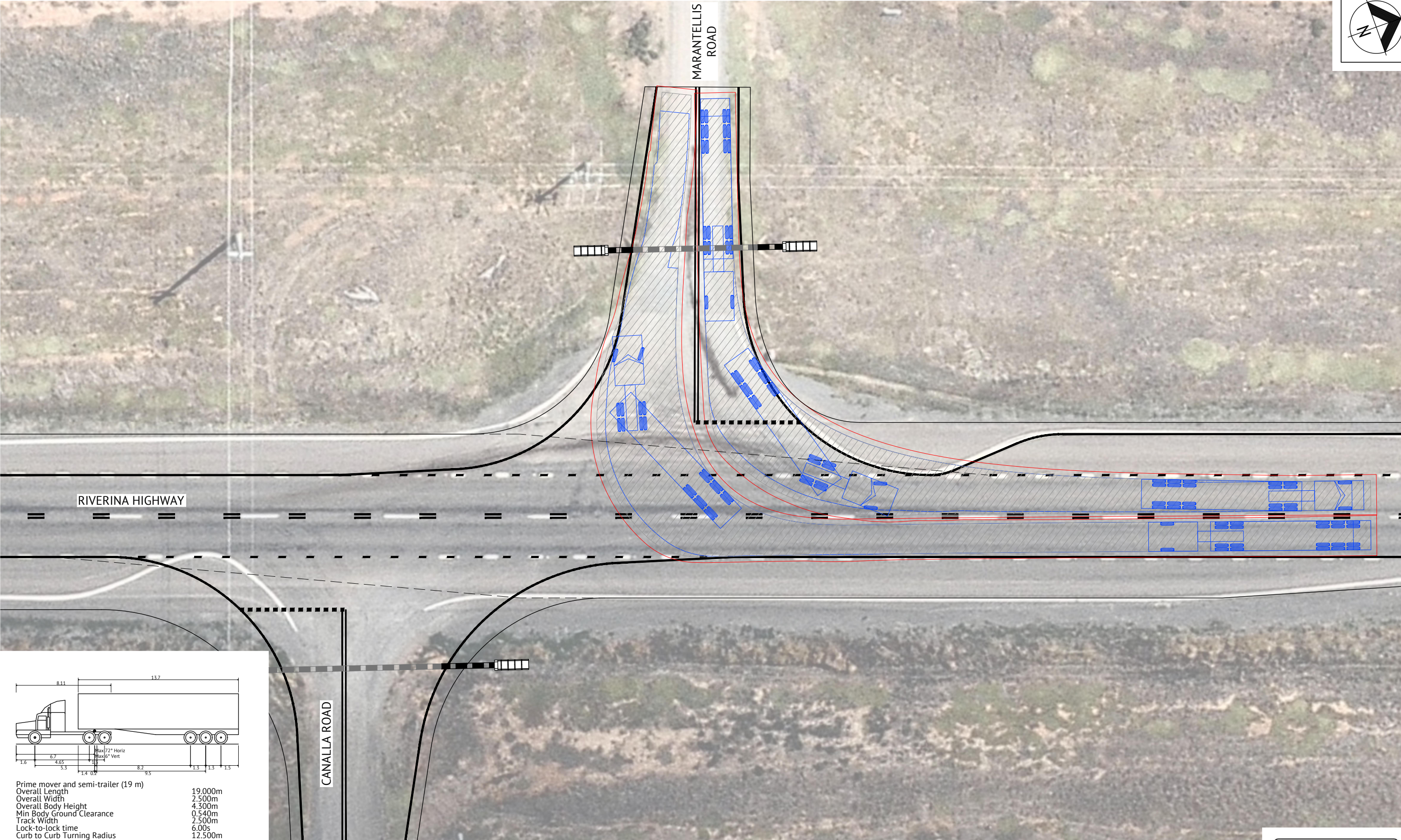
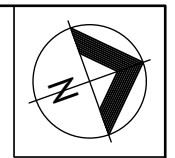
**ALBURY OFFICE**  
 598 MACAULEY STREET  
 PO BOX 3055  
 ALBURY, NSW 2640  
 PH: (02) 60580100  
 WEB: www.premise.com.au

DESIGNED	PPO
CHECKED	PPO
PROJECT MANAGER	PPO



CLIENT	GRANSOLAR DEVELOPMENT AUSTRALIA PTY LTD
PROJECT	FINLEY BESS
LOCATION	RIVERINA HIGHWAY, FINLEY 2713
SHEET TITLE	VEHICLE TURNING PATHS, SHEET 3 OF 4

JOB CODE	P001993_01
SHEET NUMBER	C005
REV	A



Prime mover and semi-trailer (19 m)  
 Overall Length 19.000m  
 Overall Width 2.500m  
 Overall Body Height 4.300m  
 Min Body Ground Clearance 0.540m  
 Track Width 2.500m  
 Lock-to-lock time 6.00s  
 Curb to Curb Turning Radius 12.500m

**19m LONG PRIME MOVER AND SEMI-TRAILER**  
 NTS

**LEFT OUT OF AND RIGHT IN TO MARANTELLIS ROAD**  
 SCALE 1:150

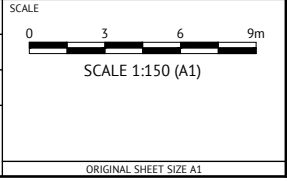


ISSUED FOR REVIEW				
DATE	REV	DESCRIPTION	REC	APP
06/11/2025	A	ISSUED FOR REVIEW	RB	PPO



**ALBURY OFFICE**  
 598 MACAULEY STREET  
 PO BOX 3055  
 ALBURY, NSW 2640  
 PH: (02) 60580100  
 WEB: www.premise.com.au

DESIGNED PPO
CHECKED PPO
PROJECT MANAGER PPO

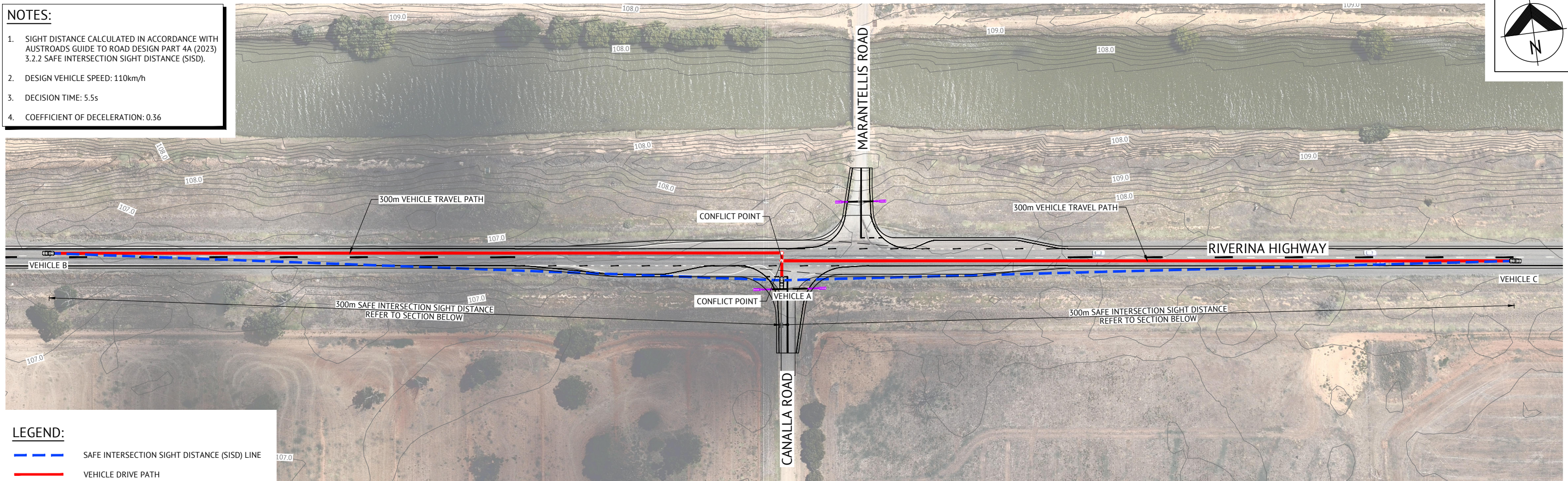
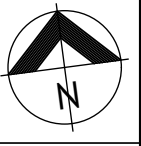


CLIENT	GRANSOLAR DEVELOPMENT AUSTRALIA PTY LTD
PROJECT	FINLEY BESS
LOCATION	RIVERINA HIGHWAY, FINLEY 2713
SHEET TITLE	VEHICLE TURNING PATHS, SHEET 4 OF 4

JOB CODE	P001993_01
SHEET NUMBER	C006
REV	A

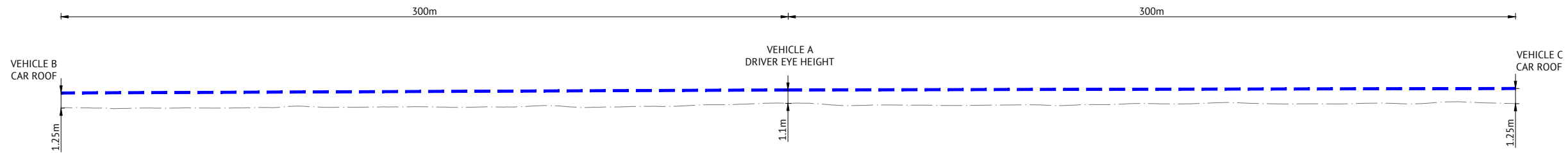
**NOTES:**

1. SIGHT DISTANCE CALCULATED IN ACCORDANCE WITH AUSTRROADS GUIDE TO ROAD DESIGN PART 4A (2023) 3.2.2 SAFE INTERSECTION SIGHT DISTANCE (SISD).
2. DESIGN VEHICLE SPEED: 110km/h
3. DECISION TIME: 5.5s
4. COEFFICIENT OF DECELERATION: 0.36



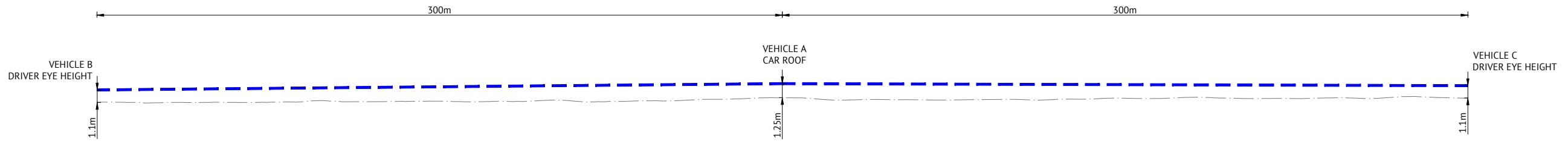
**PLAN**

SCALE 1:800



**MINOR ROAD SAFE INTERSECTION SIGHT DISTANCE (SISD) LONGITUDINAL SECTION**

SCALE H 1:800 V 1:160



**MAJOR ROAD SAFE INTERSECTION SIGHT DISTANCE (SISD) LONGITUDINAL SECTION**

SCALE H 1:800 V 1:160

- LEGEND:**
- Blue dashed line: SAFE INTERSECTION SIGHT DISTANCE (SISD) LINE
  - Black solid line: EXISTING SURFACE



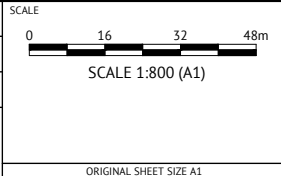
**ISSUED FOR REVIEW**

DATE	REV	DESCRIPTION	RB	PPO
06/11/2025	A	ISSUED FOR REVIEW		

**Premise**  
PART OF THE Arney GROUP

**ALBURY OFFICE**  
598 MACAULEY STREET  
PO BOX 3055  
ALBURY, NSW 2640  
PH: (02) 60580100  
WEB: www.premise.com.au

DESIGNED	PPO
CHECKED	PPO
PROJECT MANAGER	PPO

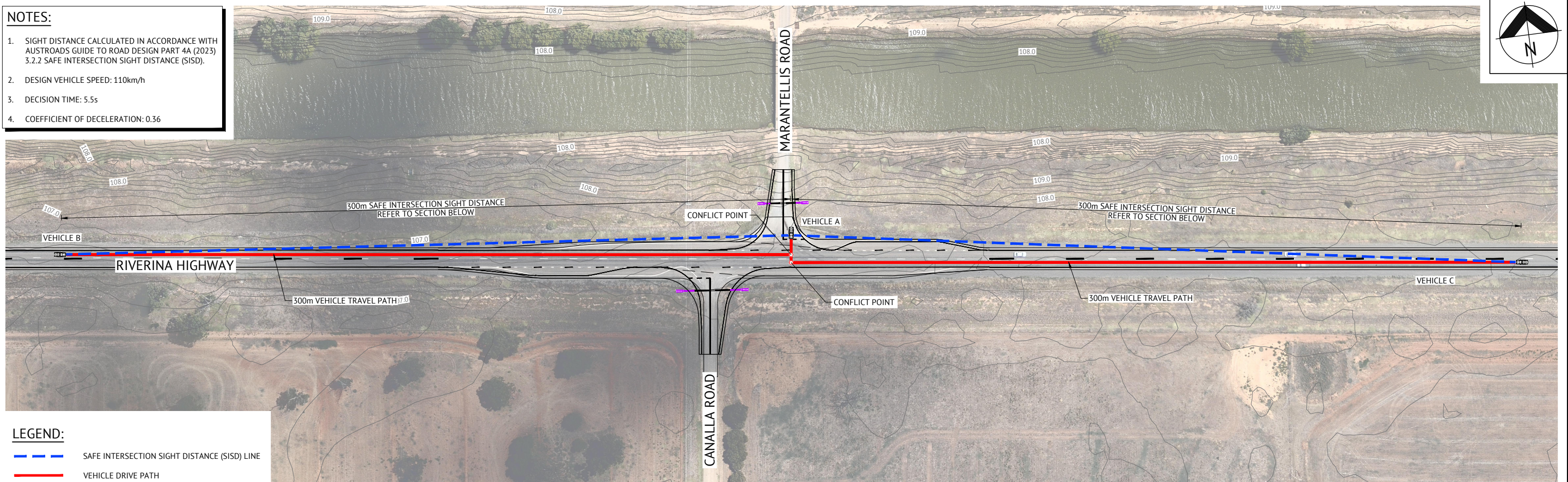
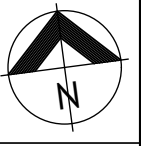


CLIENT	GRANSOLAR DEVELOPMENT AUSTRALIA PTY LTD
PROJECT	FINLEY BESS
LOCATION	RIVERINA HIGHWAY, FINLEY 2713
SHEET TITLE	SAFE INTERSECTION SIGHT DISTANCE (SISD) PLAN, SHEET 1 OF 2

JOB CODE	P001993_01
SHEET NUMBER	C007
REV	A

**NOTES:**

1. SIGHT DISTANCE CALCULATED IN ACCORDANCE WITH AUSTRROADS GUIDE TO ROAD DESIGN PART 4A (2023) 3.2.2 SAFE INTERSECTION SIGHT DISTANCE (SISD).
2. DESIGN VEHICLE SPEED: 110km/h
3. DECISION TIME: 5.5s
4. COEFFICIENT OF DECELERATION: 0.36

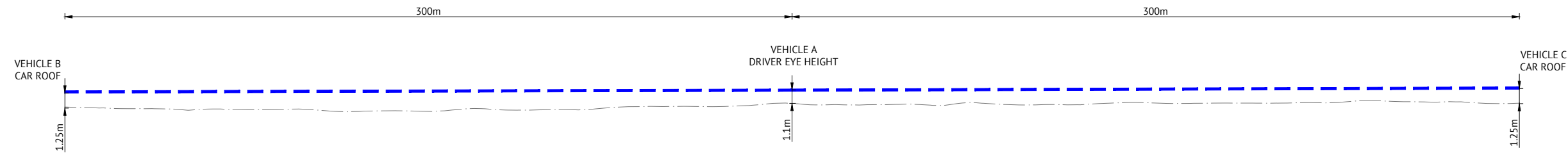


**LEGEND:**

- SAFE INTERSECTION SIGHT DISTANCE (SISD) LINE
- VEHICLE DRIVE PATH

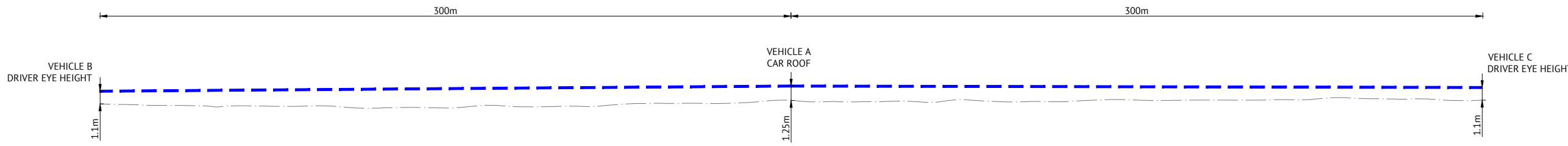
**PLAN**

SCALE 1:800



**MINOR ROAD SAFE INTERSECTION SIGHT DISTANCE (SISD) LONGITUDINAL SECTION**

SCALE H 1:800 V 1:160



**MAJOR ROAD SAFE INTERSECTION SIGHT DISTANCE (SISD) LONGITUDINAL SECTION**

SCALE H 1:800 V 1:160

**LEGEND:**

- SAFE INTERSECTION SIGHT DISTANCE (SISD) LINE
- EXISTING SURFACE



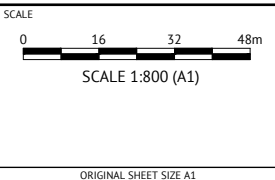
**ISSUED FOR REVIEW**

DATE	REV	DESCRIPTION	RB	PPO
06/11/2025	A	ISSUED FOR REVIEW	RB	PPO
			REC	APP



**ALBURY OFFICE**  
 598-MACAULEY STREET  
 PO BOX 3055  
 ALBURY, NSW 2640  
 PH: (02) 60580100  
 WEB: www.premise.com.au

DESIGNED PPO
CHECKED PPO
PROJECT MANAGER PPO



CLIENT	GRANSOLAR DEVELOPMENT AUSTRALIA PTY LTD
PROJECT	FINLEY BESS
LOCATION	RIVERINA HIGHWAY, FINLEY 2713
SHEET TITLE	SAFE INTERSECTION SIGHT DISTANCE (SISD) PLAN, SHEET 2 OF 2

JOB CODE	P001993_01
SHEET NUMBER	C008
REV	A