

## Aditi Coomar

---

**From:** Lauren McMahon <lmcmahon@mecone.com.au>  
**Sent:** Wednesday, 1 November 2017 1:32 PM  
**To:** Aditi Coomar  
**Subject:** Re: Modification to Redevelopment of Parramatta Public and Arthur Phillip High Schools - Request additional information  
**Attachments:** Re: APHS: s96 modification of material to the gym

Aditi,

Apologises for the delay, please see our response in red below.

Regards,



**Lauren McMahon**  
Level 12  
179 Elizabeth St, Sydney NSW 2000  
**T:** 02 8667 8668  
**F:** 02 8079 6656

**Please consider the environment before printing this email and the attachments.**

**CONFIDENTIAL** This e-mail is confidential to the named recipient. If you have received a copy in error, please destroy it. You may not disclose the contents of this e-mail to anyone, nor take copies of it. The only copies permitted are (1) by the named recipient and (2) for the purposes of completing successful electronic transmission to the named recipient and then only on the condition that these copies, once received, are kept confidential until destruction.

---

**From:** Aditi Coomar <Aditi.Coomar@planning.nsw.gov.au>  
**Date:** Thursday, 5 October 2017 at 8:25 am  
**To:** Lauren McMahon <lmcmahon@mecone.com.au>  
**Subject:** RE: Modification to Redevelopment of Parramatta Public and Arthur Phillip High Schools - Request additional information

Hello Lauren,

Further to my email below, can you please let me know when the information is likely to be submitted?

Kind Regards,

**Aditi Coomar**  
Senior Planner  
School Infrastructure Assessments  
Social and Other Infrastructure Assessments  
Division of Priority Projects Assessments  
320 Pitt Street | Sydney NSW 2000  
T 02 8217 2097





Subscribe to our [newsletter](#)

**From:** Aditi Coomar

**Sent:** Wednesday, 27 September 2017 4:05 PM

**To:** 'lmcmahon@mecone.com.au' <lmcmahon@mecone.com.au>

**Subject:** Modification to Redevelopment of Parramatta Public and Arthur Phillip High Schools - Request additional information

Dear Ms. McMahon,

I refer to the above application and advise that the proposed modification has been referred to EPA, OEH, Parramatta Council and Heritage Council for comments. Consequently, the following information is requested by the Department and by EPA prior to further assessment being undertaken:

## General

The submitted drawings (east elevation) indicates that the materials for the PPS is being changed from brick to Terracotta GFRC. However, the list of modifications do not include this amendment. You are requested to clarify this matter. **The response to submissions package sent to DP&E in September 2016 outlined the proposed changes to the materials for the PPS and APHS which were a result of the Design Jury comments. Please see the extract form Appendix 12 – Design Intent report of the package below. The extract outlines that the terracotta coloured fibre cement was to be reinstated to the PPS as per the competition scheme.**

## Summary of Key Changes

Changes to the planning report submitted 03/05/2016 are summarised below:

### PPS

- Building setbacks (p. 40-41)
  - Reduced to east and south
- Building form
  - Lift core speed core - lift core reduced slightly to reach visible in macquarie street elevation
  - Sky bridges reduced from three to two - circulation has been refined and a de-cluttering of courtyard
- Interior facade materiality
  - Vertical peristyle balustrade replaces perforated metal panels to increase visual permeability across the courtyard
- Exterior facade materiality
  - Reinstatement of terracotta coloured fibre cement to upper facade panels as per competition scheme
  - Federation red brick to base of building to be more materiality of character buildings and surrounding domain

### APHS

- Building setbacks (p. 40-41)
  - Reduced slightly to East - increased setback of gym to Barrack Lane
- Building Height
  - Roof height increased from 68m to 69.29m (1.29m on top of floor) - increase due to photo voltaic and may vary slightly dependent on specification
- Screen of materials (p. 41-42)
  - Facade Screens - All screens enclosed aluminium louvers of varying apertures in light bronze colour
  - Gymnasium - Federation brick materiality brought into solid elements of the gym - line in materiality with PPS base and site walls
  - Lift core - Glass removed and have become fully masonry concrete due to fire engineering and budget constraints
- Movement
  - Interior stair positioning (p. 42) - refinement of stair positioning to interior to improve circulation
- Re-configuration of theme basins and outdoor learning spaces (p. 42-43)

### SITE

- Perimeter Fence heights (page 26)
  - height increased to 2.100m perimeter fence around perimeter of both sites
- Materiality change of perimeter planters
  - concrete to brick across both sites to tie into heritage and base materiality of both schools
- Planters removed adjacent to facade on inner street
  - open of plan amenity the planting
- Refinement of landscape design
- New and updated street and public domain views (p. 28-38)
- Entries boundaries and access
  - additional entry points to school have been added to increase potential permeability of the site
- Community use Opportunities (p. 37)
- Additional overshadowing diagrams (p. 39)
- Visual impact assessment from Parramatta park (p. 44-45)

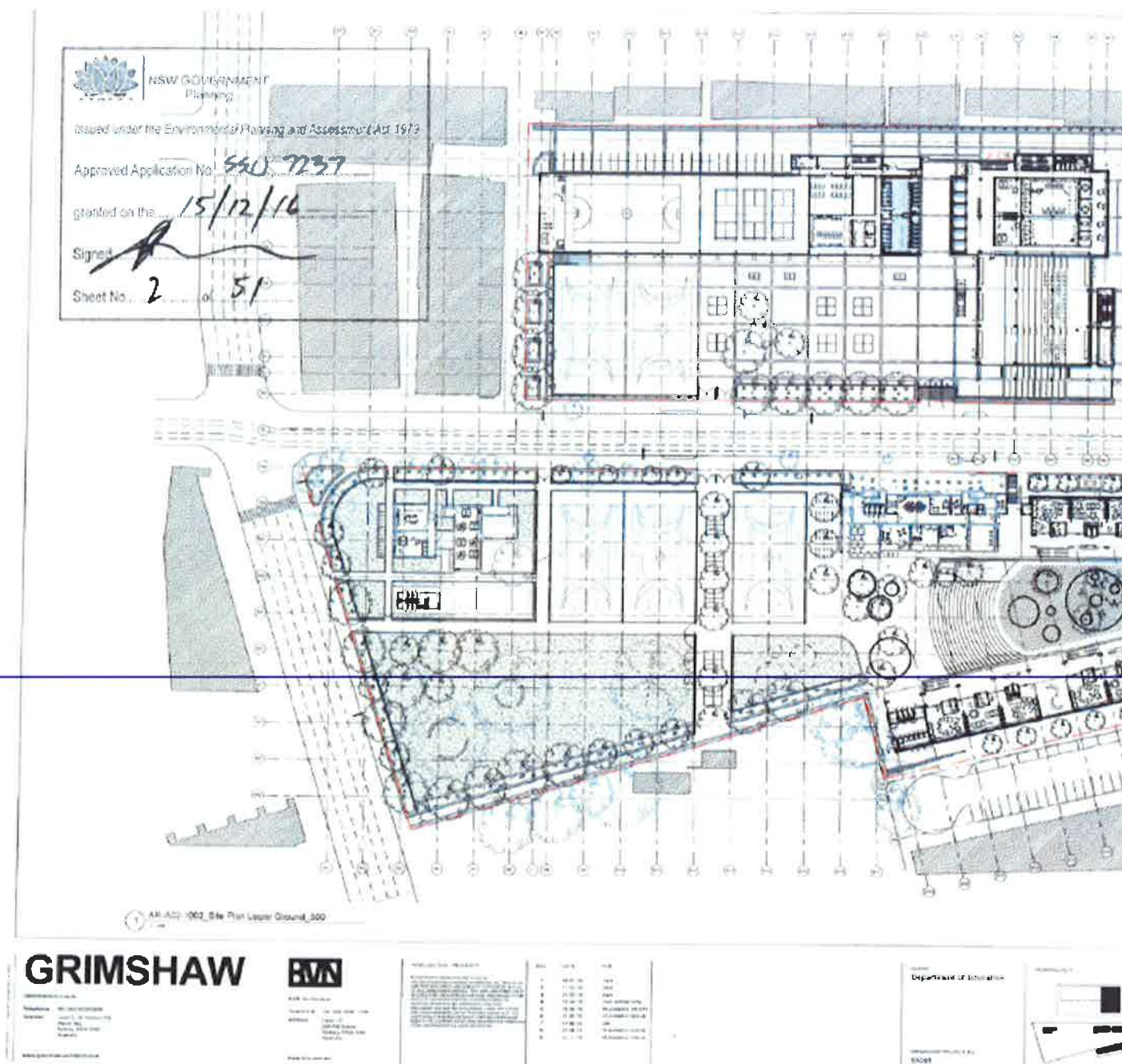
## EPA

The EPA is concerned that the modifications propose –

(a) substituting metal for masonry cladding of part of the Arthur Phillip High School gymnasium which may influence the character, quality and level of noise impacts on

surrounding noise sensitive land uses, particularly during use of those facilities outside school hours, and Our Acoustic Consultants (ARUP) have looked at the amendments to the material to the APHS gym, see attached correspondence. ARUP states that the noise levels at the nearest external receiver meet the project criteria.

(b) additional cricket nets on the Parramatta Public School site at Smith Street that may influence the character, quality and level of noise impacts on Western Sydney University, particularly during use of those facilities by external parties outside school hours. The cricket nets were always intended to be located where they are indicated on the plans as a playing area for future students. However is saying this, the proposed cricket nets would be 'exempt development' under the new SEPP (Education Establishments and Child Care Facilities) as they would be considered as 'sporting field' in Clause 38 Existing Schools – Exempt Development and would comply with Clause 17 – General Requirements for Exempt Development (comply with BCA requirements and minimal impact to the heritage item). Therefore in this regard they would not require development consent.



You are requested to clarify the above matters and send additional information responding to the concerns as soon as possible.

Please note that comments from Parramatta Council, Heritage and OEH are pending. Further information may be requested upon receipt of these comments.

Should you require any further information in this regard, please do not hesitate to contact me on 82172097.

Kind Regards,

**Aditi Coomar**

Senior Planner

School Infrastructure Assessments

Social and Other Infrastructure Assessments

Division of Priority Projects Assessments

320 Pitt Street | Sydney NSW 2000

T 02 8217 2097



Planning &  
Environment



Subscribe to our [newsletter](#)

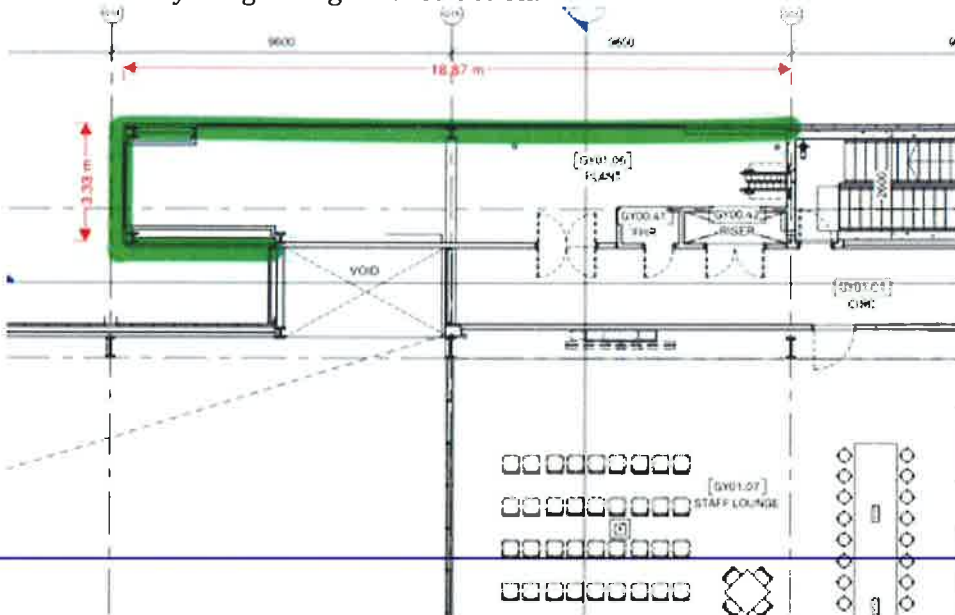
## Aditi Coomar

**From:** Lauren McMahon <lmcmahon@mecone.com.au>  
**Sent:** Tuesday, 24 October 2017 2:08 PM  
**To:** Lauren McMahon  
**Subject:** Re: APHS: s96 modification of material to the gym

**From:** Grant Cuthbert  
**Date:** Monday, 23 October 2017 at 3:59 pm  
**To:** Erik Escalante  
**Cc:** Lauren McMahon , Nick Boulter , Wesam Hyari , Amelia Loder  
**Subject:** RE: APHS: s96 modification of material to the gym

Hi Erik,

Based on our conversation today, I understand that the section of façade highlighted below is being changed from masonry to lightweight construction.



- 1) Noise breakout from the spaces adjoining that façade on the Upper Ground level aren't of concern, given the intended usage (Store rooms, First Aid).
- 2) We've updated our noise breakout calcs for the plantroom adjoining that façade on Level 1, incorporating the proposed façade build-up (4mm metal sheet | 248mm cavity with 50mm fibreglass insulation (18kg/m<sup>3</sup>) | 13mm plasterboard). Noise levels at the nearest external receiver meet the project criteria.

So the proposed lightweight façade construction is acceptable.

Regards,  
Grant

Grant Cuthbert  
Acoustic Consultant  
MDesSc (Audio & Acoustics)