

# SYDNEY ZOO

# Public Domain Development Application

## DRAWING LIST

Number	Title	Scale @ A1	Issue	Revision
L01	Drawing List	NA	DA	B
L02	Site Plan	1:2000	DA	A
L03	Landscape Plan	1:500	DA	B
L04	Section 01	1:500	DA	A
L05	Section 02	1:500	DA	A
L06	Section 03	1:100	DA	A
L07	Section 04	1:100	DA	A
L08	Section 05	1:100	DA	A
L09	Section 06	1:100	DA	A
L10	Section 07	1:100	DA	A
L11	Materials and Finishes strategy	1:1000	DA	B
L12	Pedestrian Access and Levels	1:1000	DA	B
L13	Vehicular Access Strategy	1:1000	DA	B
L14	Flood Levels	1:1000	DA	B
L15	Planting strategy	1:1000	DA	B
L16	Planting strategy	1:1000	DA	B
L17	Planting strategy	1:1000	DA	B
L18	Lighting Strategy	1:1000	DA	B
L19	Emergency Vehicles Access	1:1000	DA	B
L20	Emergency Pedestrian Exit Strategy	1:1000	DA	B
L21	Furniture and Fixtures	1:1000	DA	B
L22	Parking Strategy	1:1000	DA	B
L23	Perspective 01	NA	DA	A
L24	Perspective 02	NA	DA	A
L25	Perspective 03	NA	DA	A
L26	Perspective 04	NA	DA	A
L27	Perspective 05	NA	DA	A



**KEY**

- 1. Entrance building
- 2. Nocturnal Animals
- 3. Reptile Enclosure
- 4. Aquarium
- 5. Petting Zoo
- 6. Picnic and Play Area
- 7. The Boulevard
- 8. Main pedestrian path
- 9. Lunching with the Lions
- 10. Kiosk
- 11. Elevated Boardwalk
- 12. Water Storage Basin
- 13. Administration and Curatorial Building
- 14. Service Yard
- 15. Perimeter Service Road
- 16. Main Car Park
- 17. Overflow Car Park
- 18. Back of House Buildings
- 19. Site Pond
- 20. Restaurant/Cafe
- 21. Back of House service Road
- 22. Exhibit Water Moat
- 23. Exhibit Dry Moat
- 24. Show Arena
- 25. Holding Paddock
- 26. African Grasslands
- 27. South Eastern Tropical
- 28. African Highlands
- 29. Cumberland Plain Woodlands



**KEY**

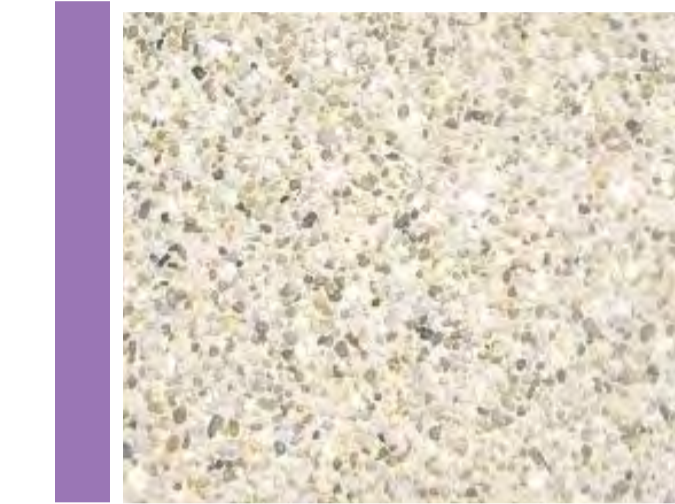
--- Sydney Zoo Scope Boundary

- - - South Plot Boundary (Not In Scope)



**THE SHOW  
ARENA**

- Grassed show Arena
- Concrete or Stone Seating



**THE WALK**

- Grit Blasted exposed aggregate insitu.
- Aggregate Varies across Zoo.



**SERVICE ROAD**

- Asphalt



**UNSEALED ROAD**

- Trafficable Gravel

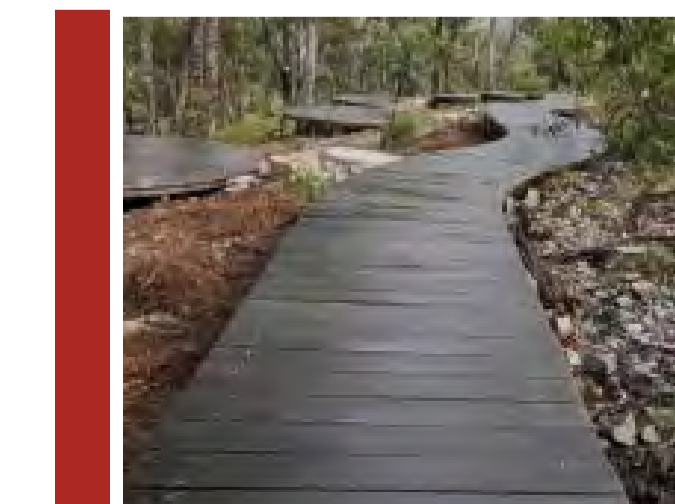


**CRUSHED SANDSTONE  
PATHWAY**



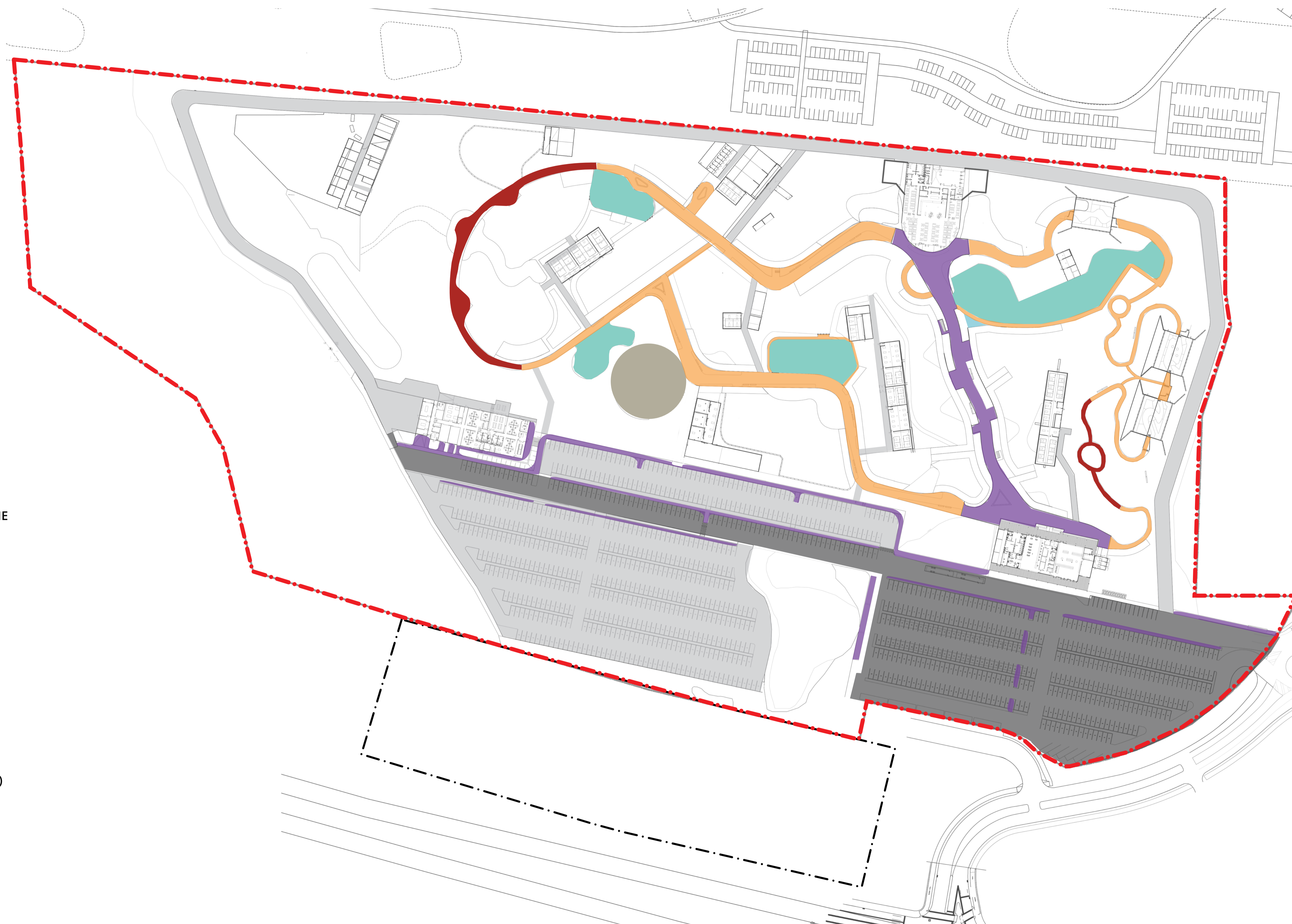
**PICNIC GREEN**

- High traffic suited species of turf with engineered sub grade to ensure longevity and success.
- King's Pride' Soft Leaf Buffalo



**RAISED PATHS (300M)**

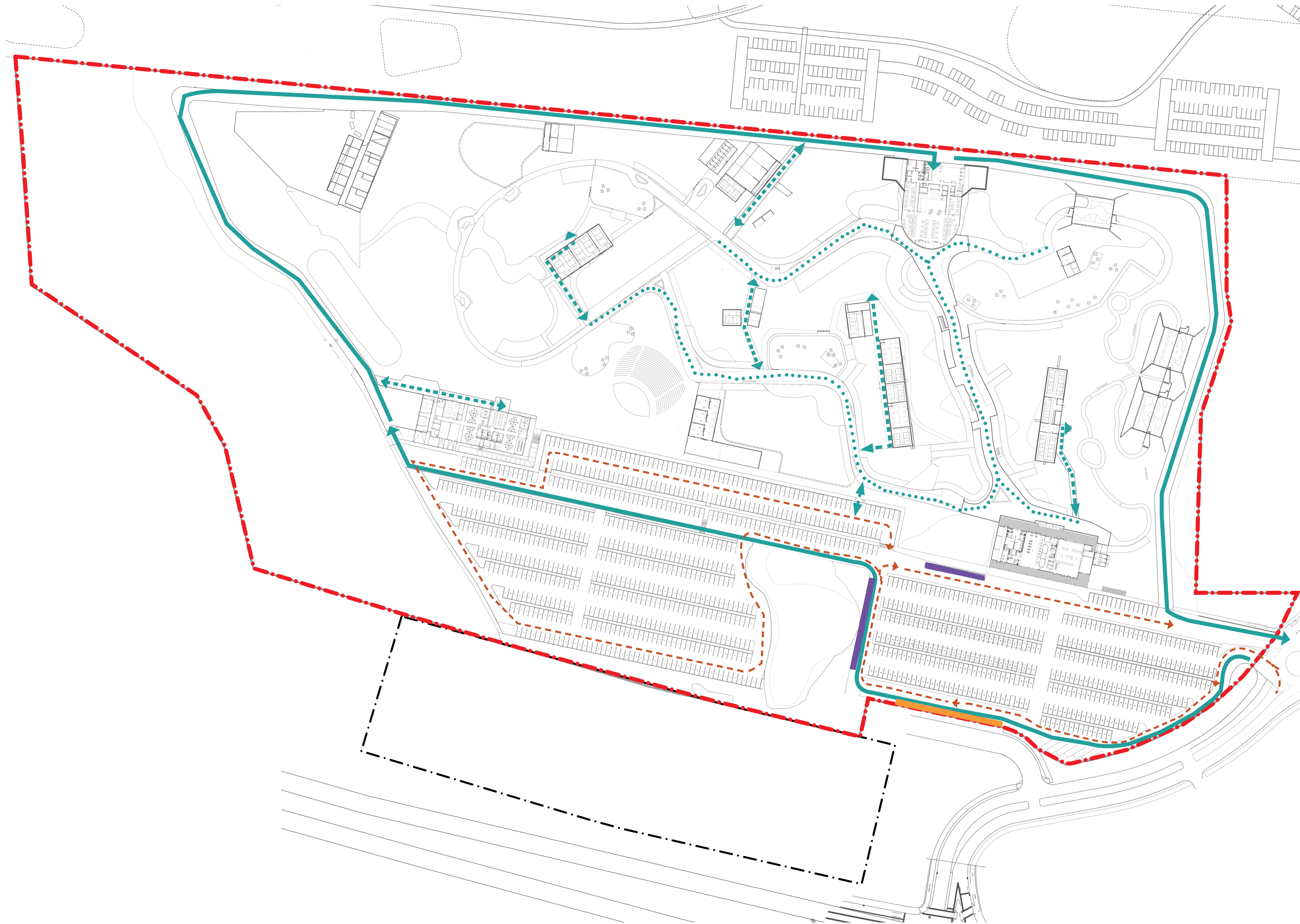
- Timber boardwalk





KEY

- Sydney Zoo Scope Boundary
- - - South Plot Boundary (Not In Scope)
- Main Service Vehicle Route
- - - → Zoo Internal Back of House Service Road
- ..... Zoo Internal Trafficable Pathway
- - - → Car Parking Route
- Bus Drop Off
- Bus Layover



KEY

--- Sydney Zoo Scope Boundary

- - - South Plot Boundary (Not In Scope)

**High Risk**  
The High Flood Risk Precinct is the land subject to a high hydraulic hazard (in accordance with the provisional criteria outlined in the N.S.W. Government Floodplain Development Manual 2005) in a 100 year flood event and/or subject to potential evacuation difficulties during a flood.

**Medium (1:100 year)**  
The Medium Flood Risk Precinct is the land below the 100 year flood level subject to a low hydraulic hazard (in accordance with the provisional criteria outlined in the N.S.W. Government Floodplain Development Manual 2005).

**Low (Possible Maximum Flood)**  
The Low Flood Risk Precinct is all land within the floodplain, ie within the extent of the Probable Maximum Flood (PMF) but not identified as either a high flood risk or medium flood risk precinct. Therefore the Low Flood Risk Precinct is all the land between the 100 year and the PMF flood extents.



KEY

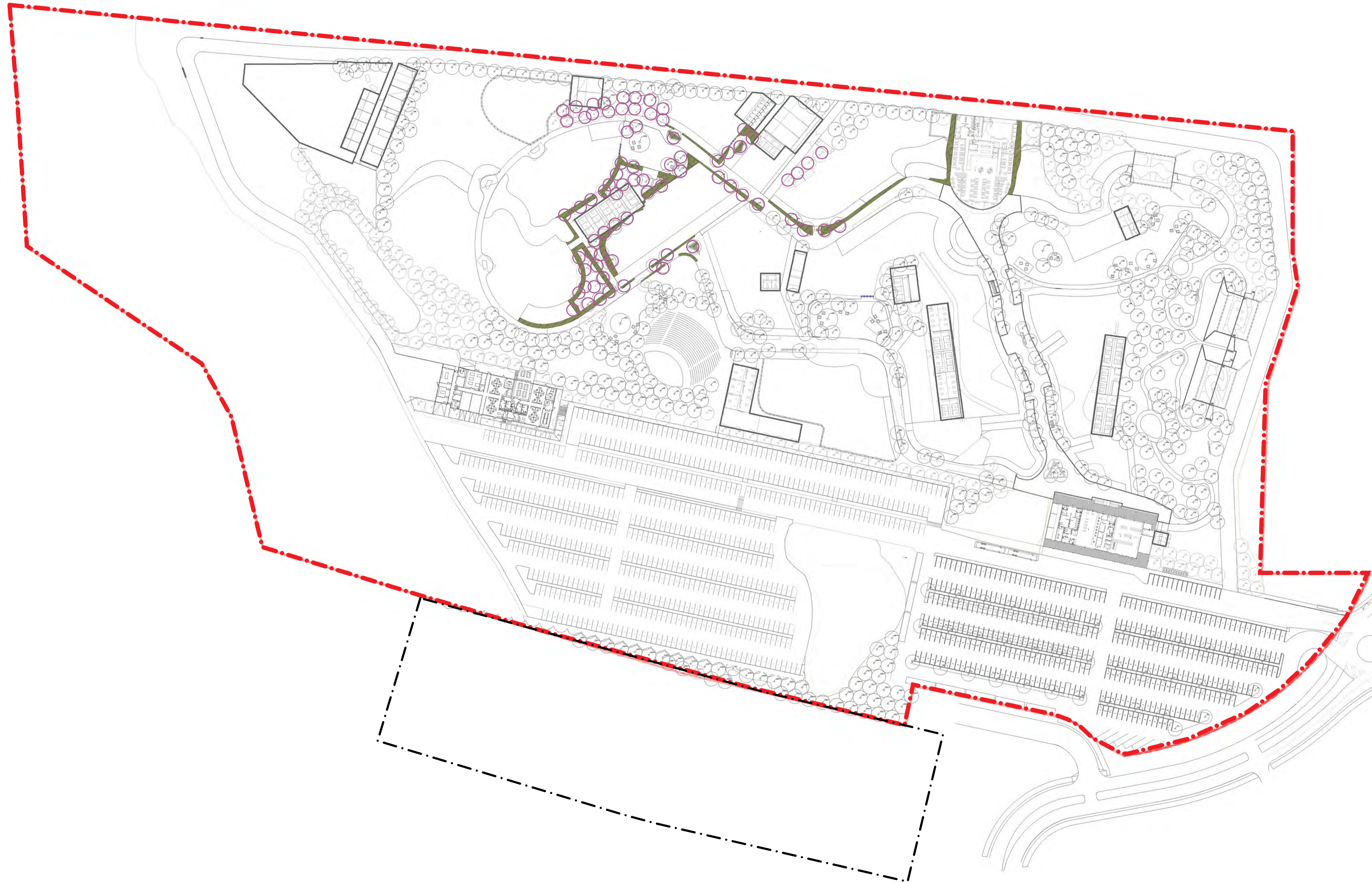
— · — Sydney Zoo Scope Boundary

— · — South Plot Boundary (Not In Scope)

Botanic Name	Common Name	Native/ Exotic
<b>Base Trees</b>		
<i>Acacia elongata</i>	Swamp Wattle	Native
<i>Acacia pendula</i>	Weeping Myall	Native
<i>Hakea sericea</i>	Silky Haekia	Native
<b>FEATURE Trees</b>		
<i>Aloe barberae</i>	Tree Aloe	Exotic
<i>Brachychiton rupestris</i>	Narrow leaved bottle tree	Exotic
<i>Dracaena draco</i>	Dragon tree	Exotic
<i>Ficus hillii</i>		Native
<i>Strelitzia Nicolai</i>	Giant white bird of paradise	Exotic



Botanic Name	Common Name	Native/ Exotic
<b>Shrubs and Ground Covers</b>		
<i>Aloe arborescens</i>	Krantz Aloe	EXOTIC
<i>Aloe Ferox</i>	Red aloe	EXOTIC
<i>Carex appressa</i>	Tall Sedge	Native
<i>Chrysocephalum apiculatum</i>	Yellow Buttons	Native
<i>Cymbopogon refractus</i>	Barbed Wire Grass	Native
<i>Daviesia ulicifolia</i>	Gorse Bitter Pea	Native
<i>Dillwynia glaberrima</i>	Smooth Parrot Pea	Native
<i>Dillwynia juniperina</i>	Prickly Parrot-pea	Native
<i>Dorothy excelsa</i>	Gynea Lily	Native
<i>Lomandra multiflora</i>	Many-Flowered Mat Rush	Native
<i>Microlaena stipoides</i>	Weeping grass	Native
<i>Pennisetum alopecuroides</i>	Swamp Foxtail Grass	Native
<i>Poa poliformis 'Kingsdale'</i>	Kingsdale Tussock Grass	Native
<i>Themeda australis</i>	Kangaroo Grass	Native

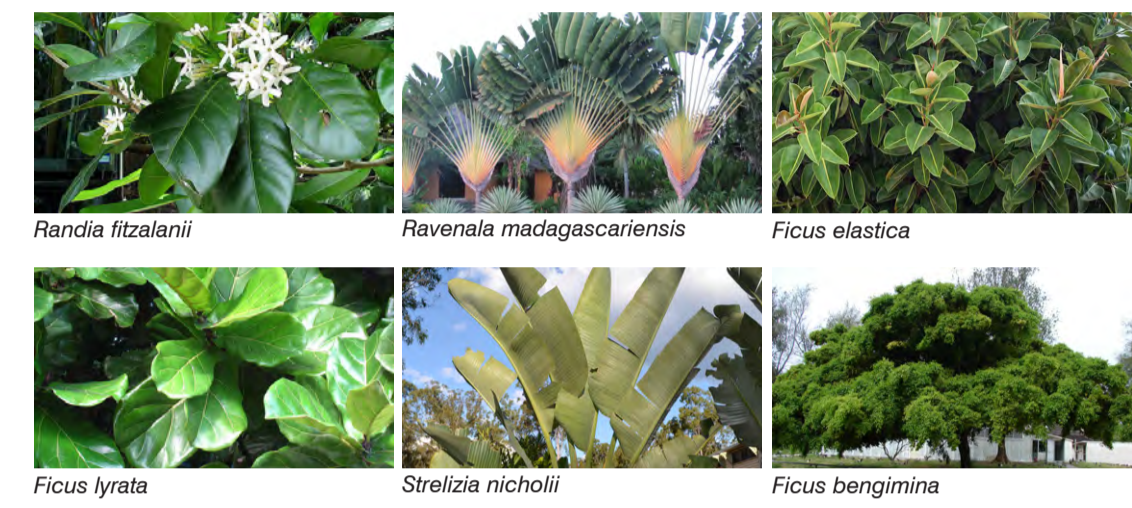


KEY

— Sydney Zoo Scope Boundary

- - - South Plot Boundary (Not In Scope)

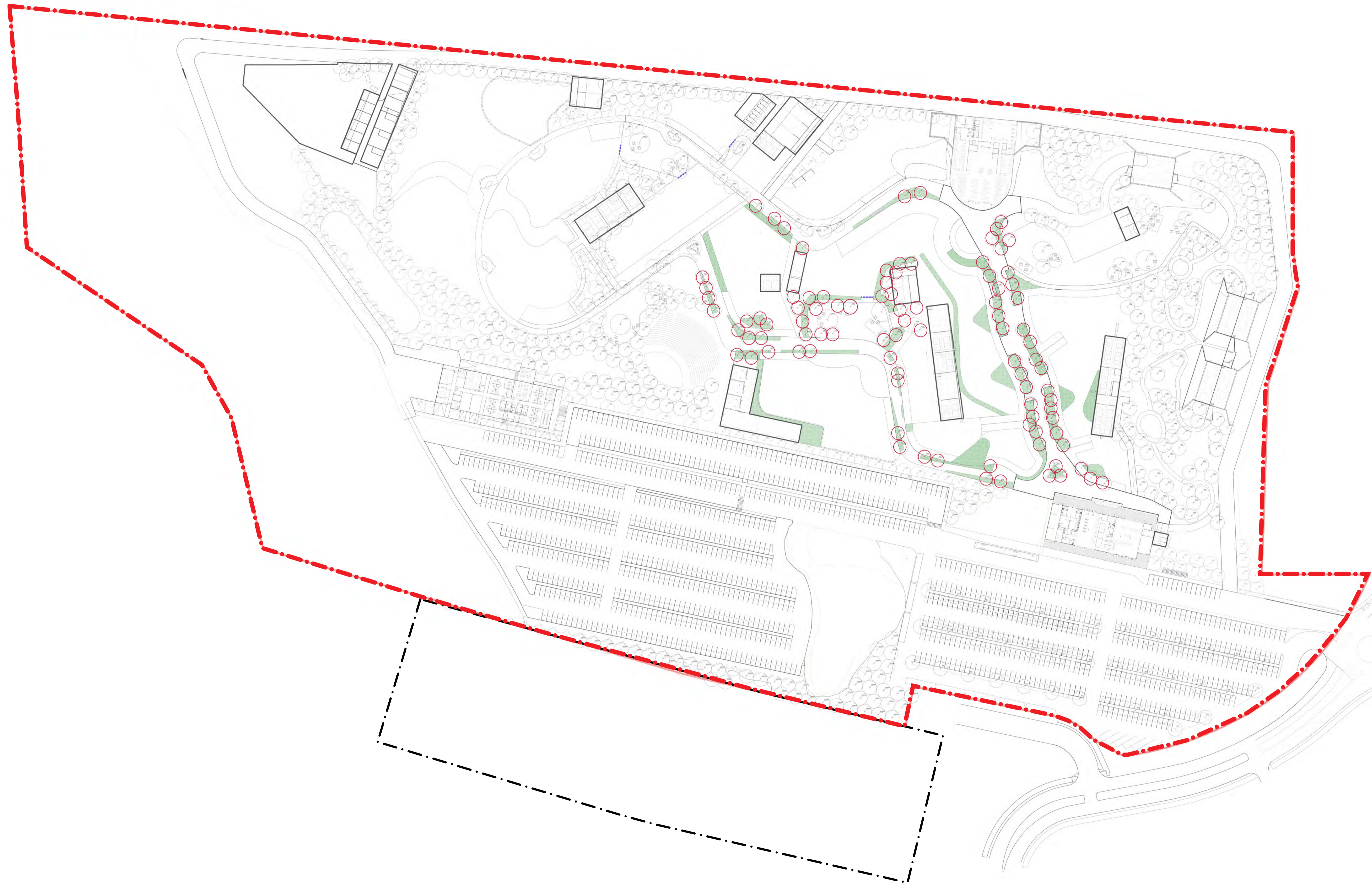
Botanic Name	Common Name	Native/ Exotic
Trees		
<i>Archontophoenix cunninghamiana</i>	Bangalow Palm	Native
<i>Ficus elastica</i>	Rubber Tree	Exotic
<i>Ficus hilli</i>	Hills Fig	Native
<i>Ficus lyrata</i>	Fiddle leaf fig	Exotic
<i>Ficus benjamina</i>	Weeping fig	Native
<i>Livistona chinensis</i>	Chinese Fan Palm	Exotic
<i>Randia fitzalanii</i>	Native gardenia	Native
<i>Ravenala madagascariensis</i>	Traveler's palm	Exotic
<i>Strelitzia nicotii</i>	Giant Bird of paradise	Exotic



Botanic Name	Common Name	Native/ Exotic
Shrubs and Ground Covers		
<i>Arthropodium cirratum</i>	New Zealand Rock Lily	Exotic
<i>Aspidistra elatior</i>	Cast Iron Plant	Exotic
<i>Asplenium australasicum</i>	Bird's Nest Fern	Native
<i>Bismarckia nobilis</i>	Nobel Palm	Exotic
<i>Cissus antarctica</i>	Kangaroo Vine	Native
<i>Cordyline petiolaris</i>	Broad Leaved Palm Lily	Native
<i>Cordyline stricta</i>	Palm Lily	Native
<i>Dichondra 'Silver falls'</i>	Silver falls	Native
<i>Dichondra repens</i>	Kidney weed	Native
<i>Doryanthes palmeri</i>	Giant Spear Lily	Native
<i>Epipremnum aureum</i>	Devils ivy	Exotic
<i>Fatsia japonica</i>	Japanese Aralia	Exotic
<i>Howea forsteriana</i>	Kentia Palm	Exotic
<i>Platycerium bifurcatum</i>	Elkhorn	Native
<i>Plectranthus ciliatus</i>	African spur flower	Exotic
<i>Rhapis excelsa</i>	Lady Palm	Exotic
<i>Thunbergia grandiflora</i>	Bengal Clock-Vine	Exotic
<i>Viola hederacea</i>	Native violet	Native



Botanic Name	Common Name	Native/ Exotic
BAMBOO		
<i>Bambusa multiplex alphonse karr</i>	Alphonse Karr Bamboo	Exotic
<i>Bambusa textilis var. gracilis</i>	Slender Weaver Bamboo	Exotic
<i>Bambusa oldhamii</i>	Giant timber Bamboo	Exotic
<i>Phyllostachys aureosulcata</i>	Yellow Groove Bamboo	Exotic



KEY

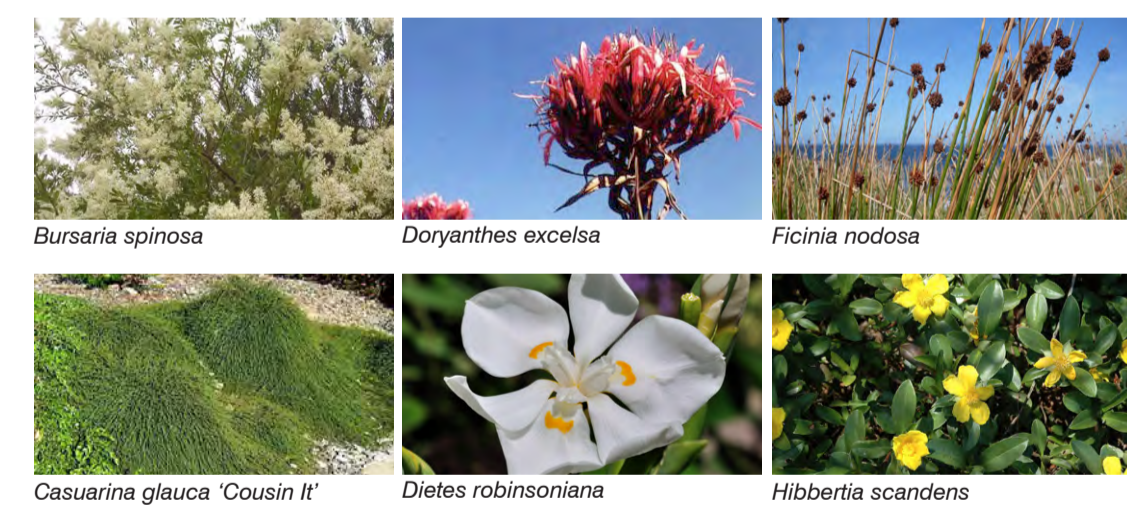
--- Sydney Zoo Scope Boundary

- - - South Plot Boundary (Not In Scope)

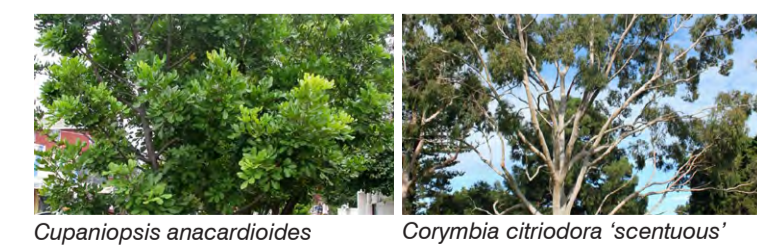
Botanic Name	Common Name	Native/ Exotic
Trees		
<i>Acacia parramattensis</i>	Paramatta wattle	Native
<i>Brachychiton acerifolius</i>	Illawarra Flame Tree	Native
<i>Castanospermum australe</i>	Blackbean	Native
<i>Casuarina glauca</i>	Swamp Oak	Native
<i>Corymbia maculata</i>	Spotted gum	Native
<i>Cupaniopsis anacardioides</i>	Tuckeroo	Native
<i>Eucalyptus amplifolia</i>	Cabbage gum	Native
<i>Eucalyptus eugenoides</i>	Thin leaved stringybark	Native
<i>Eucalyptus fibrosa</i>	Broad leaved Red Ironbark	Native
<i>Eucalyptus tereticornis</i>	Forest Red Gum	Native
<i>Flindersia australis</i>	Crows Ash	Native
<i>Harpullia pendula</i>	Tulipwood	Native
<i>Hakea sericea</i>	Silky hakea	Native
<i>Lophostemon confertus</i>	Brush Box	Native
<i>Melaleuca decora</i>	White feather Honey Myrtle	Native
<i>Melaleuca sieberi</i>	Sieber's Paperbark	Native
<i>Melaleuca styphelioides</i>	Prickly-leaved paperbark	Native



Botanic Name	Common Name	Native/ Exotic
Shrubs and Ground Covers		
<i>Bursaria spinosa</i>	Sweet Bursaria	Native
<i>Carex appressa</i>	Tall Sedge	Native
<i>Casuarina glauca 'Cousin It'</i>	Cousin It	Native
<i>Cheilanthes distans</i>	Bristly Cloak Fern	Native
<i>Chrysocophalum apiculatum</i>	Yellow Buttons	Native
<i>Cymbopogon refractus</i>	Barbed wire grass	Native
<i>Daviesia ulicifolia</i>	Gorse bitter pea	Native
<i>Dianella spp.</i>	Flax lily	Native
<i>Dietes robinsoniana</i>	Wedding Lily	Native
<i>Doryanthes excelsa</i>	Gymea lily	Native
<i>Ficinia nodosa</i>	Knobby Club-Rush	Native
<i>Grevillea juniperina 'Pink Lady'</i>	Pink Lady Spider Grevillea	Native
<i>Hibbertia scandens</i>	Snake Vine	Native
<i>Indigofera australis</i>	Australian Indigo	Native
<i>Lomandra filiformis</i>	Wattle mat-rush	Native
<i>Lomandra longifolia</i>	Spiny-Headed Mat Rush	Native
<i>Lomandra longifolia 'Tanika'</i>	Tanika' Fine-leaved Lomandra	Native
<i>Microlaena stipoides</i>	Weeping grass	Native
<i>Pennisetum alopecuroides 'Nalray'</i>	'Nalray' Fountain Grass	Native
<i>Poa labillardieri 'Eskdale'</i>	Eskdale' Blue Tussock Grass	Native
<i>Poa poliformis 'Kingsdale'</i>	Kingsdale' Tussock Grass	Native
<i>Themeda australis</i>	Kangaroo grass	Native



Botanic Name	Common Name	Quantity	Native/ Exotic
Car Park			
<i>Cupaniopsis anacardioides</i>	Tuckeroo		Native
<i>Corymbia citriodora 'scentuosus'</i>	Lemon scented gum - dwarf		Native



KEY

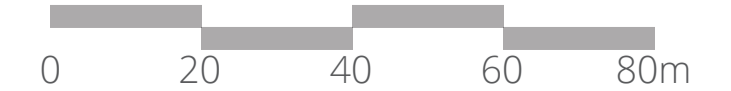
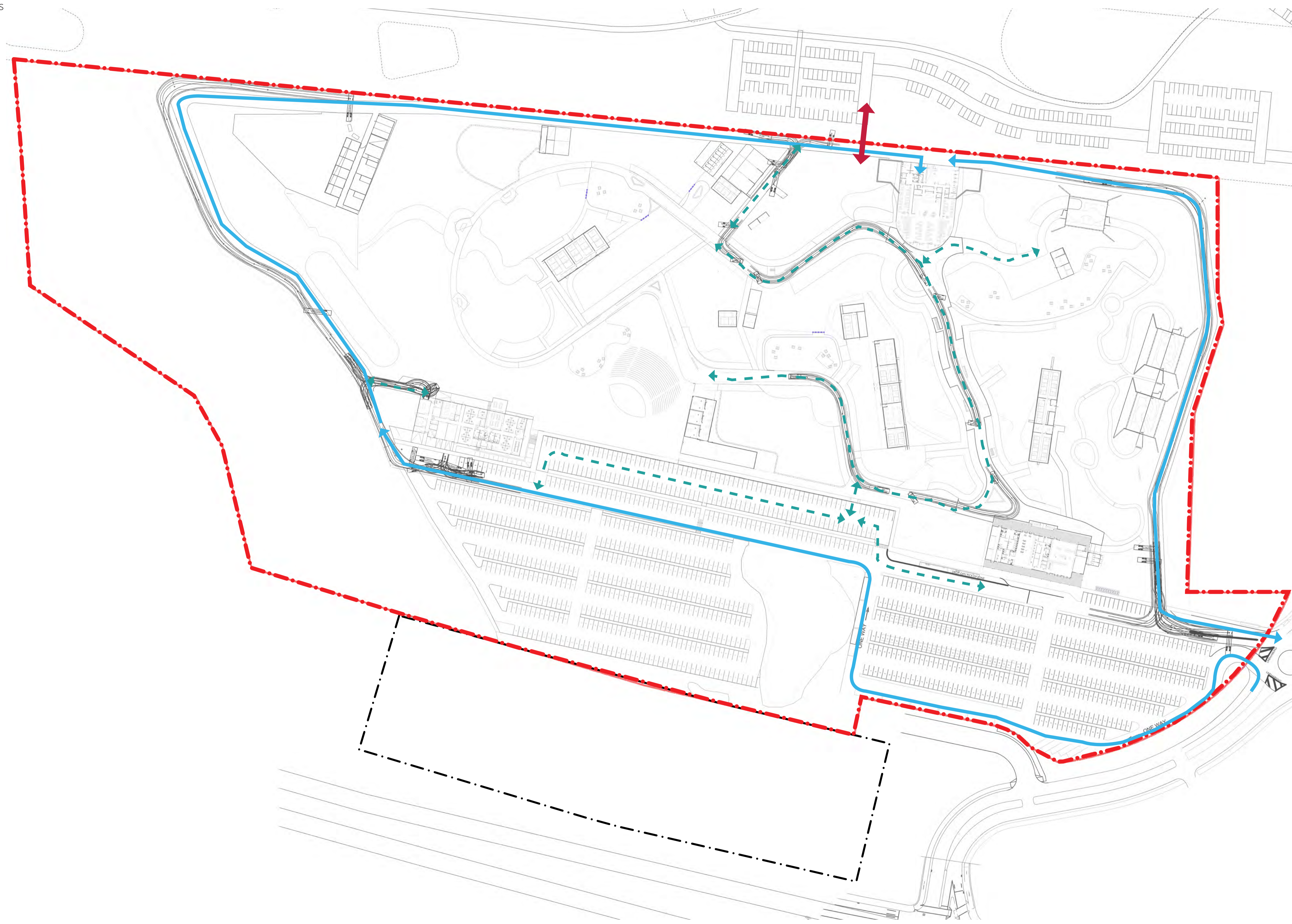
- · - · - Sydney Zoo Scope Boundary
- · - · - South Plot Boundary (Not In Scope)
- Car park Light Pole (@15m Spacing)
- Pathway Lighting Bollard (@5m Spacing)
- In Ground Landing Light (5m Spacing)
- In Exhibit Pole
- Underside Rail Lighting

- KEY**
- 1. Entrance building
  - 2. Administrative Building
  - 3. Restaurant/Cafe



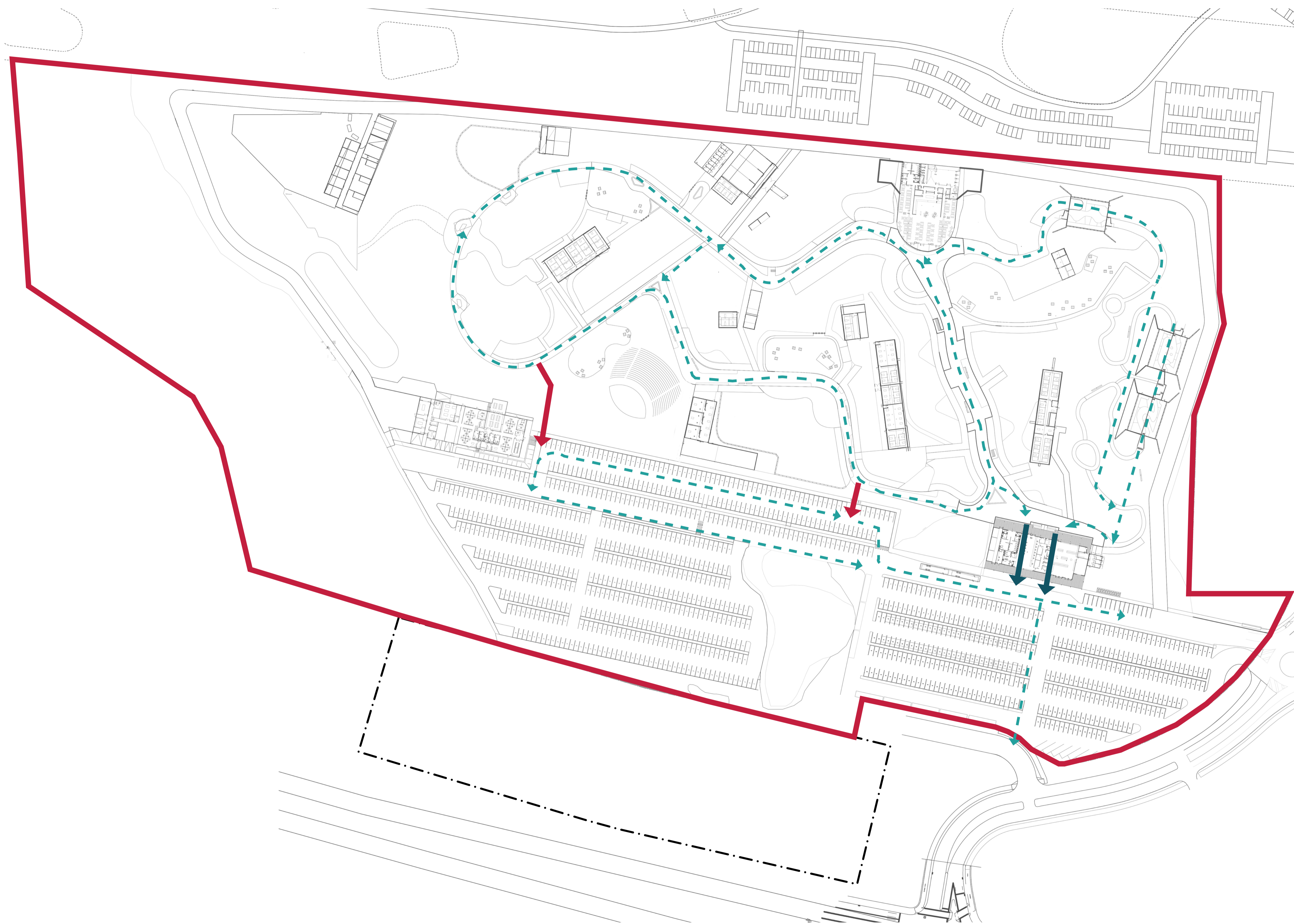
KEY

- Sydney Zoo Scope Boundary
- · - South Plot Boundary (Not In Scope)
- ↔ Fire/Police/ Ambulance Emergency Vehicle Access
- ↔ Ambulance Vehicle Access with Turning Circle
- ↔ Alternate Emergency Vehicle Access Through WSP



KEY

- Sydney Zoo Scope Boundary
- · - South Plot Boundary (Not In Scope)
- ➡ Main Pedestrian Emergency Exit
- ➡ Secondary Pedestrian Emergency Exit Only
- ↔ Pedestrian Movement



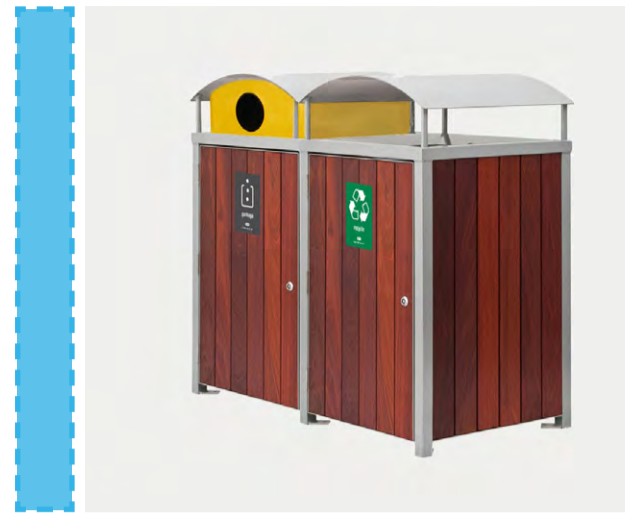
KEY

--- Sydney Zoo Scope Boundary

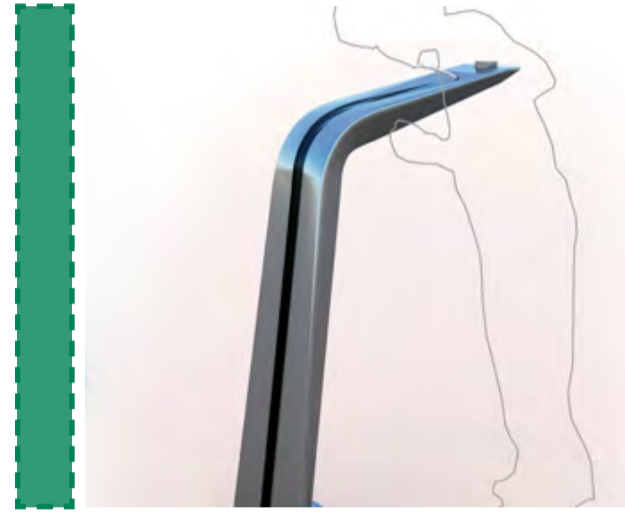
- - - South Plot Boundary (Not In Scope)

BINS

- TIMBER RECYCLED AND RUBBISH



DRINKING FOUNTAIN



SEATING AREAS

- Sustainably sourced timber



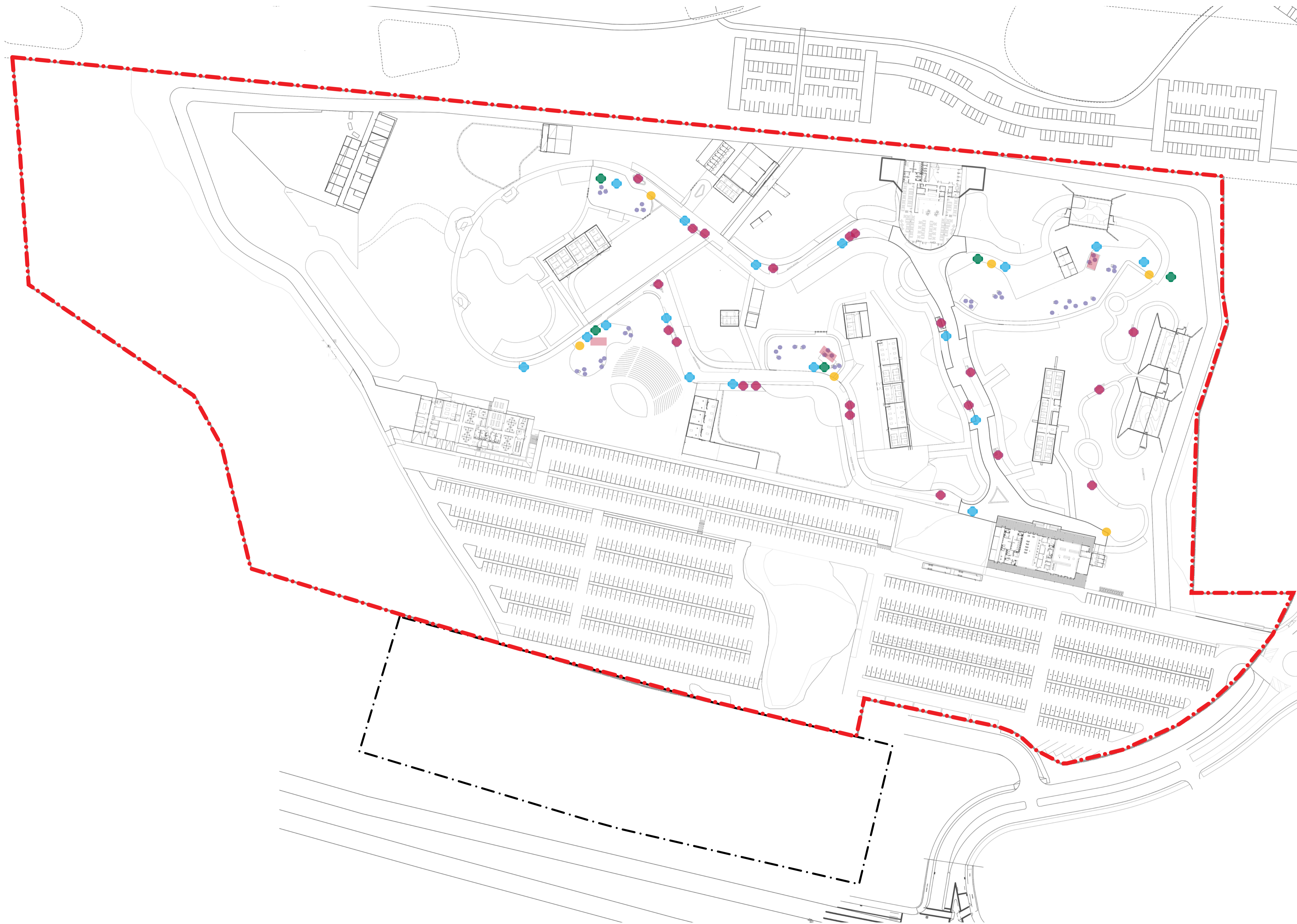
MISTING STATIONS



PICNIC TABLES



SHADE CANOPY



**KEY**

- Sydney Zoo Scope Boundary
- South Plot Boundary (Not In Scope)
- ASPHALT CAR PARK (458 CAR PARKS)
- TRAFFICABLE GRAVEL OVERFLOW CAR PARK (577 CAR PARKS)
- ACCESSIBLE (DISABLED) CAR PARKS (18)
- BIKE PARKING (20 Bike Parks)
- Existing Vegetation To Be Retained
- Proposed Buffer to Existing Vegetation

- KEY**
1. Entrance building
  2. Administrative Building

