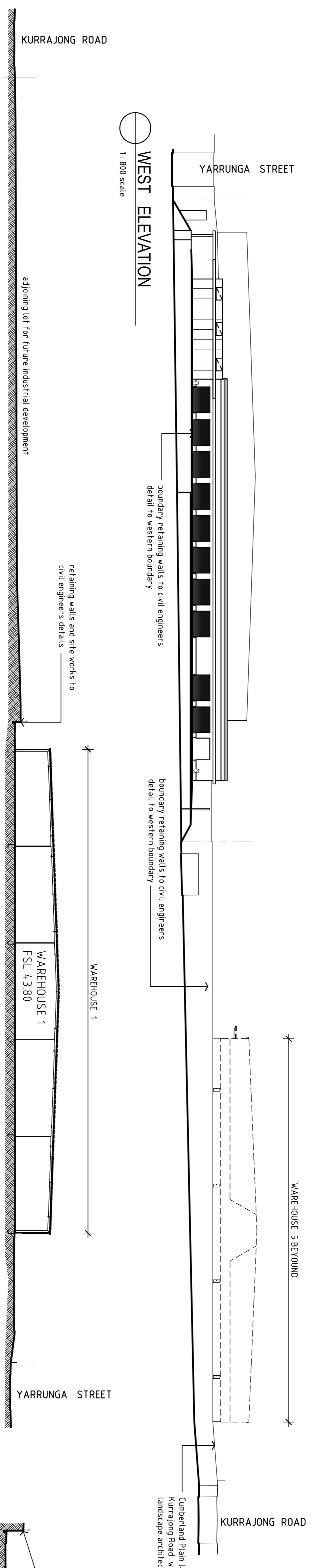
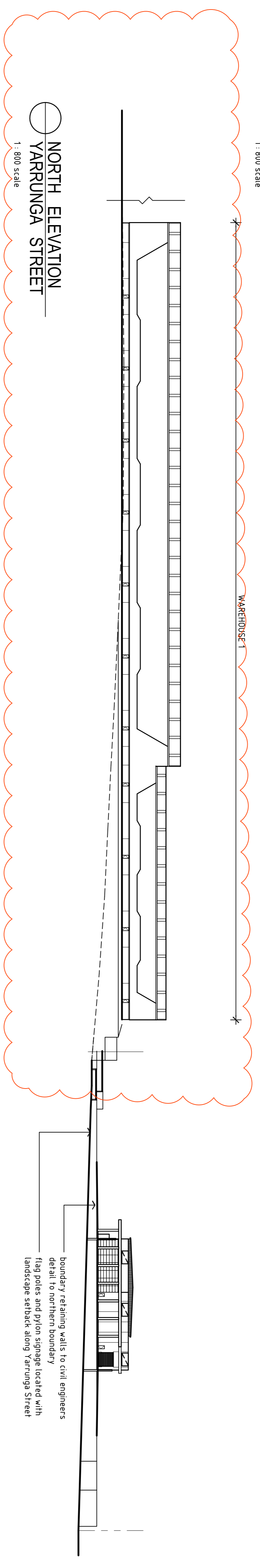
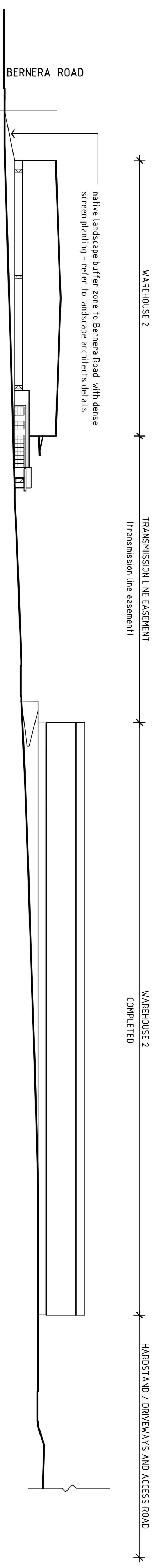
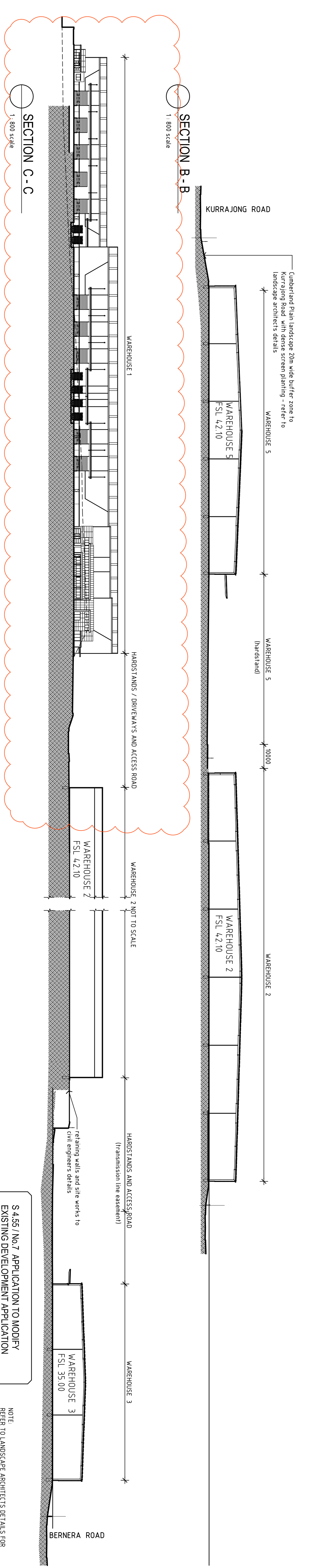


MODIFICATIONS FOR S 4.55 APPLICATION / MODIFICATION No. 7
(A) WAREHOUSE 1 AMENDMENTS TO OVERALL PLAN AND
SITE LAYOUT



SECTION A - A
 1:800 scale

SECTION D - D
 1:800 scale



S 4.55 / No.7 APPLICATION TO MODIFY EXISTING DEVELOPMENT APPLICATION

NOTE:
 REFER TO LANDSCAPE ARCHITECTS DETAILS FOR STREET VIEWS AND SECTIONS FOR SCREEN PLANTING

<p>Type: F 31/08/18 Date: ISSUED FOR S 4.55 - No. 7 APPLICATION Scale: 1:800 scale @ A1 / 1:1600 scale @ A3</p>	<p>Development: LOGOS LOGOS Property Group Suite 12/02 / 167 Macquarie Street Sydney NSW 2000 T: +61 2 919 6666 F: +61 2 9231 0948</p>	<p>Project: PRESTONS INDUSTRIAL ESTATE PROPOSED WAREHOUSE DEVELOPMENT On: YARRUNGA STREET & BERNERA ROAD, PRESTONS NSW</p>	<p>Architect: AXIS ARCHITECTURAL 4 / 1/2 Cronulla Street, Cronulla NSW 2230 P: + 61 2 9523 7858 / M: + 61 4 954 4455 E: david@axisarchitects.com.au</p>	<p>Contract: STREET ELEVATIONS & SECTIONS</p>
<p>Scale: 1:800 @ A1 1:1600 @ A3</p>	<p>Project No: 140604</p>	<p>Drawing No: DA - A 118</p>	<p>Issue: E</p>	<p>Date: August 2018</p>