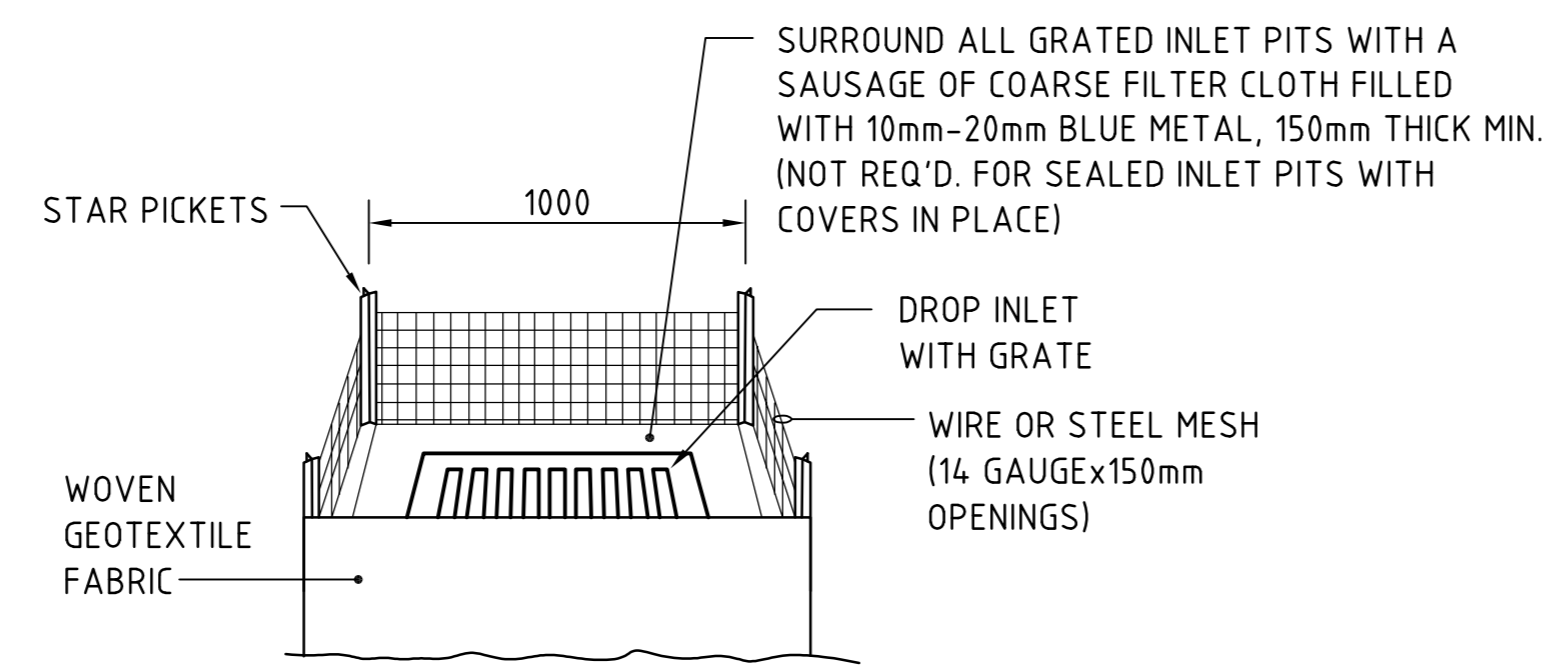
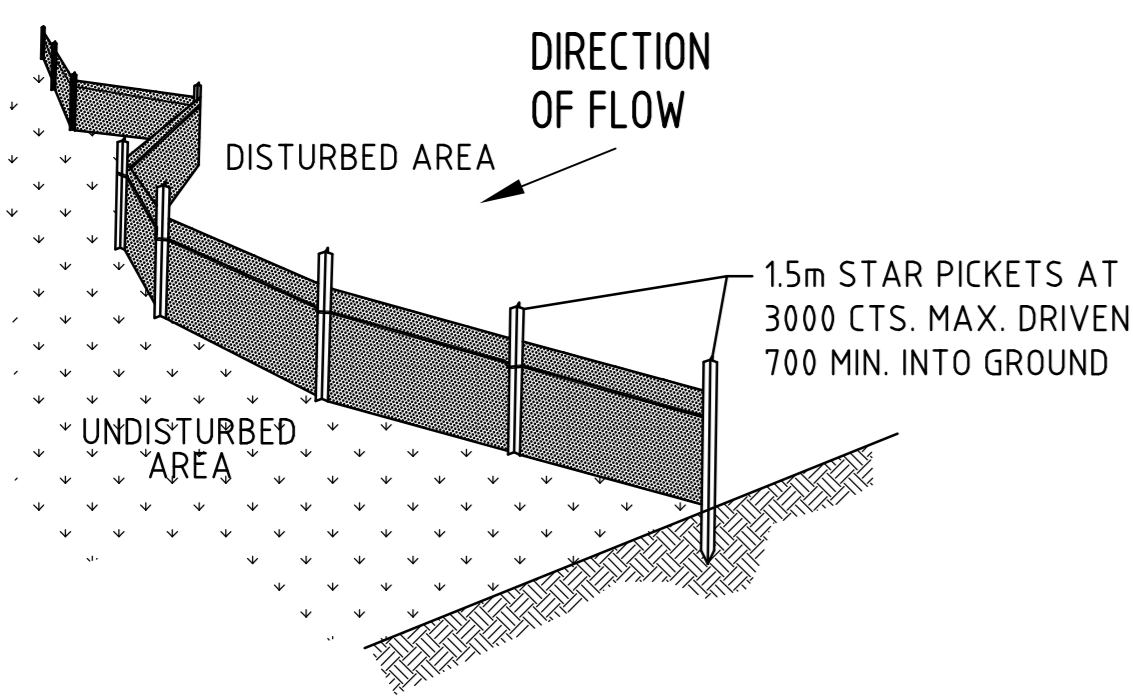


**KERB INLET CONTROL**  
N.T.S.

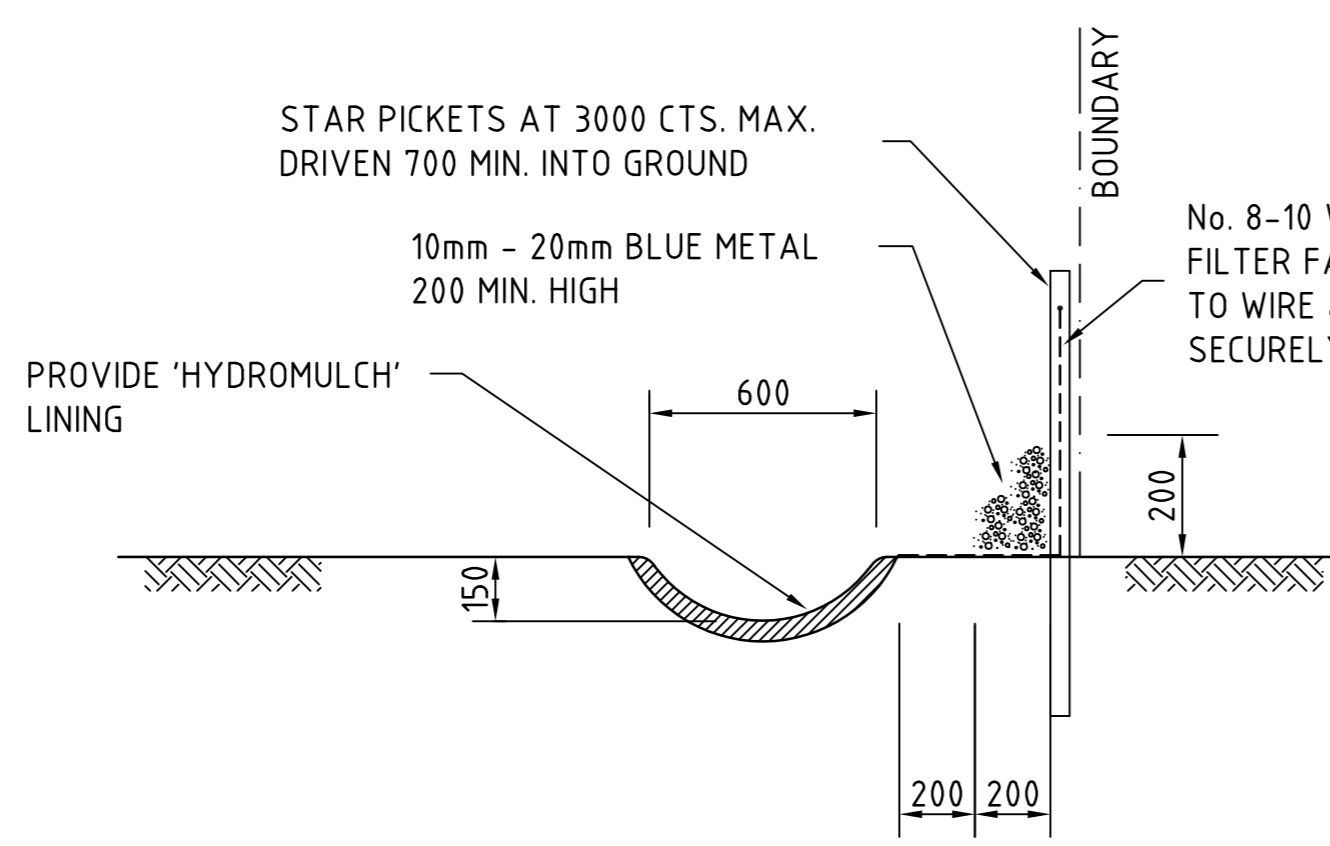


**GRATED INLET PIT FILTER DETAIL**  
N.T.S.

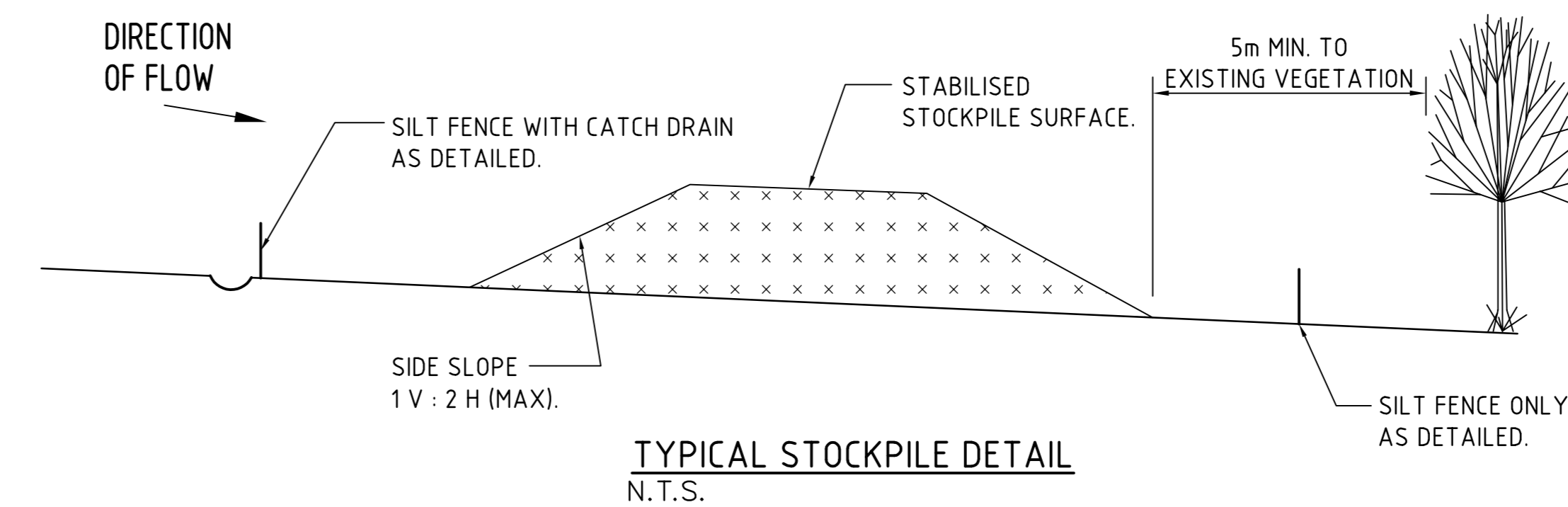
NOTE: ADOPT ABOVE DETAILS AROUND ALL PITS WITHIN AREA ENCOMPASSED BY SILT FENCE & TO PITS ON THE ROAD ADJACENT TO SITE BOUNDARY.



**TYPICAL SILT FENCE DETAIL**  
N.T.S.  
PROVIDE 1m RETURNS AT 30m INTERVALS.  
TYPICAL

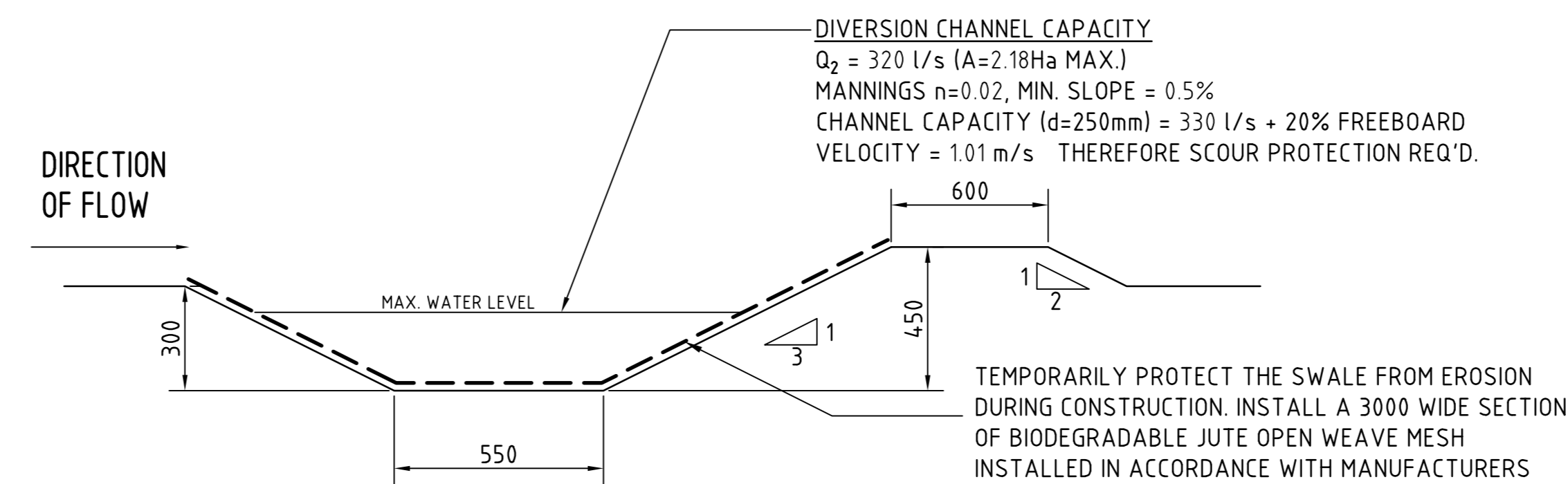
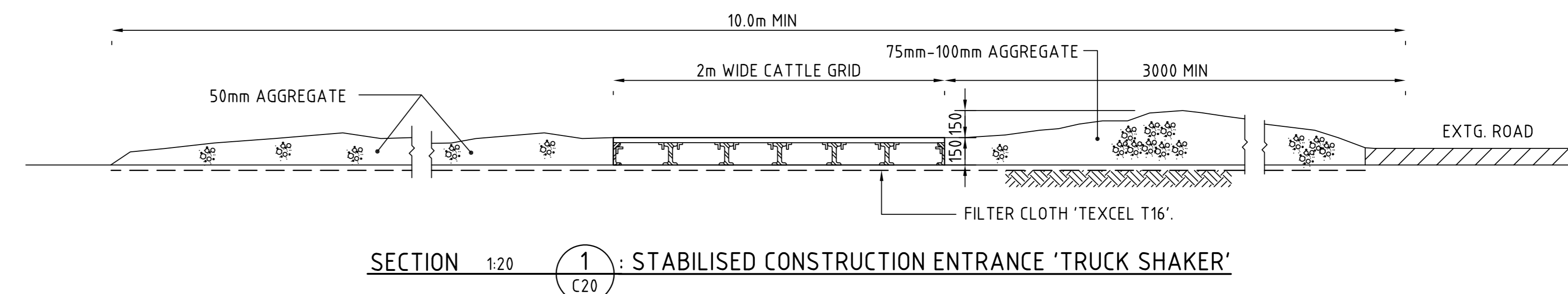


**TYPICAL OPEN DRAIN & SILT FENCE**  
SCALE 1:20

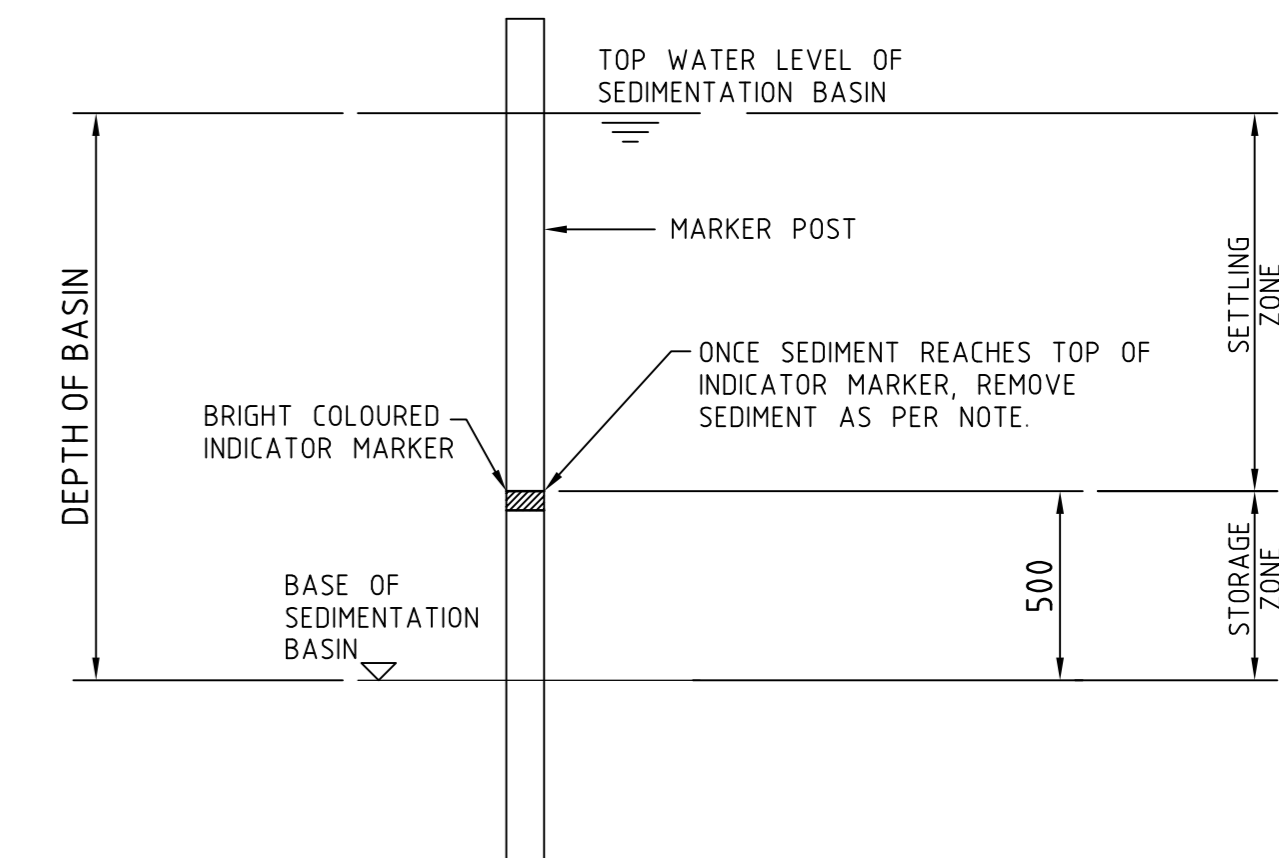


**TYPICAL STOCKPILE DETAIL**  
N.T.S.

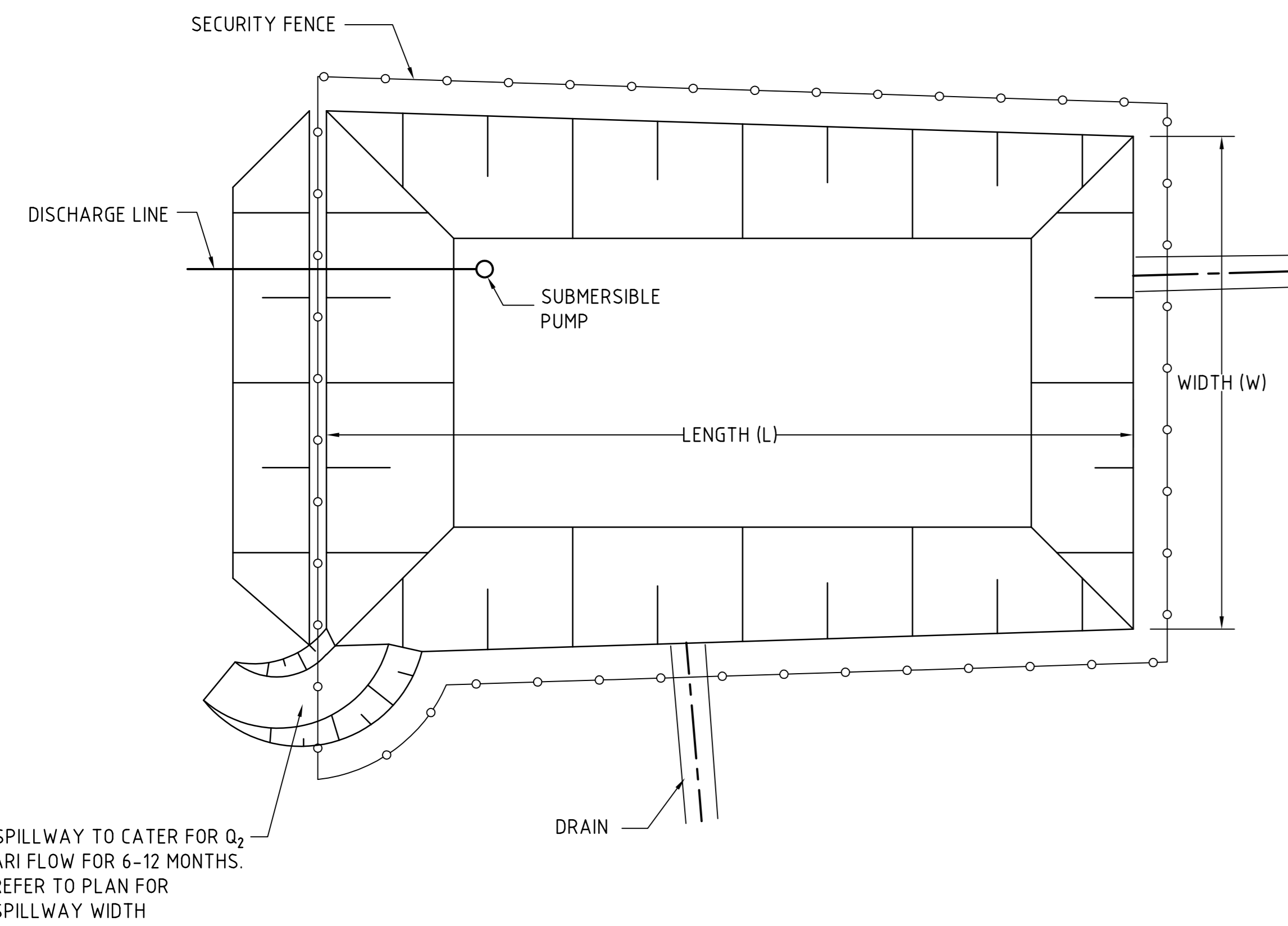
- STOCKPILE NOTES**
1. PLACE ALL STOCKPILES IN LOCATIONS MORE THAN 5m FROM EXISTING VEGETATION, ROADS & HAZARD AREAS.
  2. CONSTRUCT ON THE CONTOUR AS LOW, FLAT ELONGATED MOUNDS. SIDE SLOPE TO BE 1 V : 2 H MAX.
  3. WHERE THERE IS SUFFICIENT AREA, TOPSOIL STOCKPILES SHALL BE LESS THAN 2m IN HEIGHT.
  4. WHERE STOCKPILES ARE TO BE IN PLACE FOR MORE THAN 10 DAYS, STABILISE USING WOOD CHIP MULCH - 16 TONNE/ha.
  5. CONSTRUCT SILT FENCE WITH CATCH DRAIN ON UPSLOPE SIDE TO DIVERT WATER AROUND STOCKPILES & SILT FENCE ONLY 1 TO 2m DOWNSLOPE AS SHOWN.



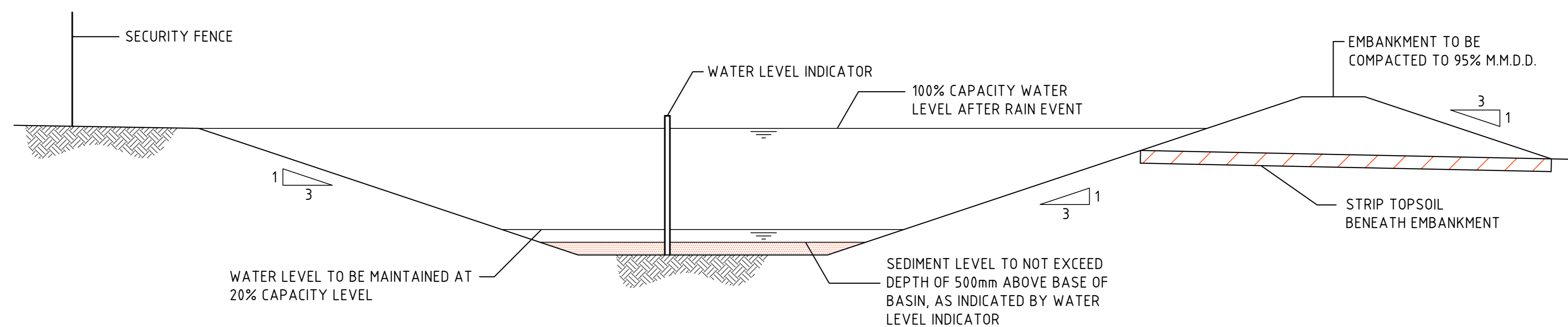
**DIVERSION DRAIN SECTION**  
SCALE 1:20



**SEDIMENT STORAGE MARKER**  
SCALE 1:20

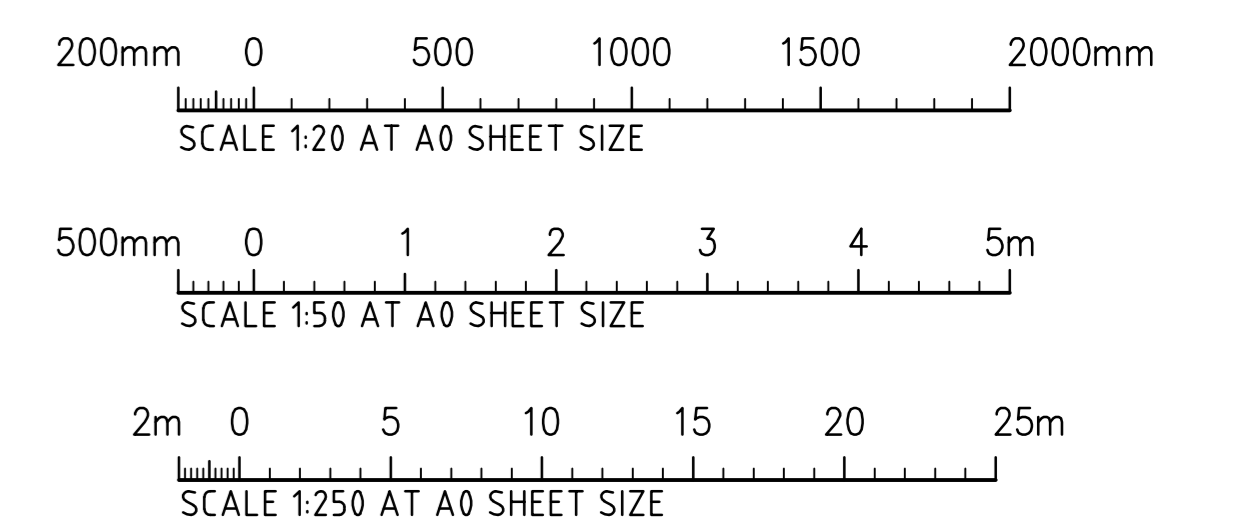


**TYPICAL SEDIMENT CONTROL POND PLAN**  
SCALE 1:250



**TYPICAL SEDIMENT CONTROL BASIN SECTION**  
SCALE 1:50

- NOTES:**
- ALL EROSION & SEDIMENT CONTROL MEASURES TO BE INSPECTED & MAINTAINED DAILY BY SITE MANAGER.
  - MINIMISE DISTURBED AREAS.
  - ROADS & FOOTPATHS TO BE SWEEP DAILY.
  - 1.2m TURF TO BE PLACED BEHIND KERBS.
  - DUST MINIMISATION CONTROL BY WATERING TO BE IMPLEMENTED BY SITE MANAGER AS REQUIRED OR AS DIRECTED BY THE EPA.



**FOR DEVELOPMENT APPLICATION**

PROJECT		CLIENT		PROJECT		CONSULTING ENGINEERS		DRAWING TITLE	
TOLL PRESTONS - EXPANSION		LOGOS PROPERTY		41B KURRAJONG ROAD, PRESTONS, NSW		Costin Roe Consulting Pty Ltd.		EROSION & SEDIMENT CONTROL DETAILS	
41B KURRAJONG ROAD, PRESTONS, NSW		SUITE 02, LEVEL 12		167 MACQUARIE STREET		Level 1, 9 Windmill Street		DRAWING No. C08753.23-C25	
167 MACQUARIE STREET		SYDNEY NSW 2000		SYDNEY NSW 2000		Walsh Bay, Sydney NSW 2000		ISSUE A	
SYDNEY NSW 2000		SYDNEY NSW 2000		SYDNEY NSW 2000		Tel: (02) 9251-7899 Fax: (02) 9241-3721		PRECISION   COMMUNICATION   ACCOUNTABILITY	
SYDNEY NSW 2000		SYDNEY NSW 2000		SYDNEY NSW 2000		email: mail@costinroe.com.au		SCALE 1:250 AT A0 SHEET SIZE	
SYDNEY NSW 2000		SYDNEY NSW 2000		SYDNEY NSW 2000		©		SCALE 1:250 AT A0 SHEET SIZE	