

LEGEND

LEVELS DATUM IS AHD.

- - - - - EXISTING CONTOUR
- - - - - B.E.L. CONTOUR (MAJOR 0.5m)
- - - - - B.E.L. CONTOUR (MINOR 0.1m)

PAVEMENT
BASE/SUBBASE COURSES
SUBGRADE
NOMINATED B.E. LEVEL

DEPTH OF PAVEMENT. REFER TO STRUCTURAL PLANS FOR DETAILS.

NOMINATED B.E.L. DETAIL
N.T.S.

EARTHWORKS VOLUMES ESTIMATE

PRELIMINARY BULK EARTHWORKS VOLUMES BASED ON A NOMINAL TOPSOIL STRIP OF 100mm OVER UNDEVELOPED SITE AREA:

CUT	= - 98,250 m ³
FILL	= +125,250 m ³
DETAILED EXCAVATION	= - 6,300 m ³
CUT BULKING	= - 3,900 m ³
IMPORT FROM ADJACENT SITE	= - 17,500 m ³
BALANCE	= - 650 m³ (EXPORT)

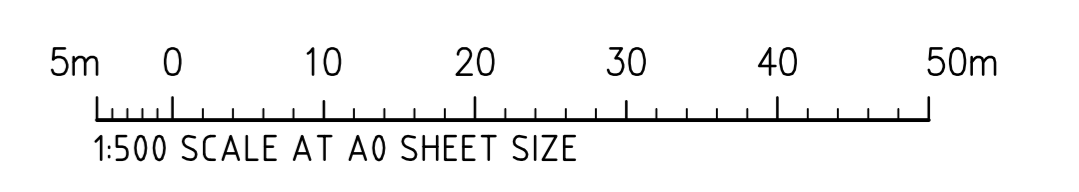
EARTHWORKS VOLUMES ARE APPROXIMATE ONLY. NO ALLOWANCE HAS BEEN MADE FOR DELETERIOUS MATERIAL, EROSION & SEDIMENT CONTROL, RETAINING WALL EXCAVATION OR COMPACTION OF FILLED SOILS.

ALLOWANCES FOR STRUCTURE

	DEPTH OF PAVEMENT
WAREHOUSE	300mm
HARDSTAND	300mm
CARPARK	300mm
LANDSCAPING	100mm

- SITE PREPARATION NOTES:**
- ALL EARTHWORKS SHALL BE COMPLETED GENERALLY IN ACCORDANCE WITH THE GUIDELINES SPECIFIED BY THE GEOTECHNICAL REPORT PROVIDED.
 - EXISTING LEVELS ARE BASED ON INFORMATION PROVIDED.
 - STRIP ANY TOP SOIL OR DELETERIOUS MATERIAL AND DISPOSE OF FROM SITE OR STORE AS DIRECTED.
 - COMPLETE CUT TO FILL EARTHWORKS TO ACHIEVE THE REQUIRED LEVELS AS INDICATED ON THE DRAWINGS WITHIN A TOLERANCE OF +0mm/-10mm THROUGH BUILDING PADS/PAVEMENTS AND +0mm/-20mm ELSEWHERE.
 - PREPARE STEEP BATTERS TO RECEIVE FILL BY CONSTRUCTING BENCHING TO FACILITATE FILL PLACEMENT AND COMPACTION.
 - AREAS TO RECEIVE FILL (THAT ARE NOT ON BENCHED BATTERS) AND AREAS IN CUT SHALL BE PROOF ROLLED TO IDENTIFY ANY SOFT HEAVING MATERIAL. SOFT MATERIAL SHALL BE BOXED OUT AND REMOVED PRIOR TO FILL PLACEMENT.
 - REFER TO TOPSOIL PREPARATION NOTES FOR AREAS AFFECTED BY EXISTING TOPSOIL MOUND/BORROW PIT.
 - SITE WON FILL TO BE PLACED IN MAXIMUM 300mm LOOSE LAYERS AND COMPACTED TO 100% STANDARD AND WITHIN 2% OF OPTIMUM MOISTURE CONTENT.
 - IMPORTED FILL SHALL BE PLACED IN MAXIMUM 300mm LOOSE LAYERS AND COMPACTED TO 100% STANDARD AND WITHIN 2% OF OPTIMUM MOISTURE CONTENT.
 - MAXIMUM PARTICLE SIZE TO BE THE SMALLER OF 150mm OR HALF THE (LOOSE) LAYER THICKNESS AND/OR TWO THIRDS THE LAYER THICKNESS AFTER COMPACTION.
 - ALL EARTHWORKS SHALL BE COMPLETED UNDER LEVEL 1 CONTROL IN ACCORDANCE WITH AS 3798-2007.
 - PRIOR TO ANY EARTHWORKS, EROSION CONTROL AS OUTLINED IN THE EROSION AND SEDIMENTATION CONTROL PLAN SHALL BE COMPLETED.
 - EXISTING ROCK, IF ANY, SHALL BE REMOVED BY HEAVY ROCK BREAKING OR RIPPING.
 - MATCH EXISTING LEVELS AT BATTER INTERFACE.
 - CONTRACTOR TO MATCH EXISTING LEVELS AT THE INTERFACE OF EARTHWORKS AND EXISTING SURFACE AT BATTER LOCATIONS OR WHERE NO RETAINING WALLS ARE PRESENT. ANY DISCREPANCY BETWEEN DESIGN AND EXISTING LEVELS TO BE REFERRED TO THE ENGINEER FOR DIRECTION OR ADJUSTMENTS TO DESIGN LEVELS.

BULK EARTHWORKS PLAN
1:500



FOR INFORMATION

ISSUED FOR INFORMATION		14.07.17	A	ARCHITECT		CLIENT	PROJECT			FOR INFORMATION		PRECISION COMMUNICATION ACCOUNTABILITY		DRAWING TITLE BULK EARTHWORKS PLAN	
AMENDMENTS		DATE	ISSUE	ARCHITECT AXIS ARCHITECTURAL 4/112 CRONULLA STREET CRONULLA NSW 2230		LOGOS PROPERTY SUITE 02, LEVEL 12 167 MACQUARIE STREET SYDNEY NSW 2000	PROPOSED DEVELOPMENT 32 YARRUNGA ROAD PRESTONS NSW	Costin Roe Consulting Pty Ltd. Consulting Engineers Level 1, 9 Windmill Street Walsh Bay, Sydney NSW 2000 Tel: (02) 8551-7899 Fax: (02) 8541-3721 email: mail@costinroe.com.au ©		DRAWING No. C08753.15-C230		ISSUE A			