



VIEW FROM SOUTH WEST
(street level view of warehouse 5 along Kurradjong Road)



VIEW FROM SOUTH EAST
(street level view of warehouse 5 along Kurradjong Road)



VIEW FROM SOUTH WEST



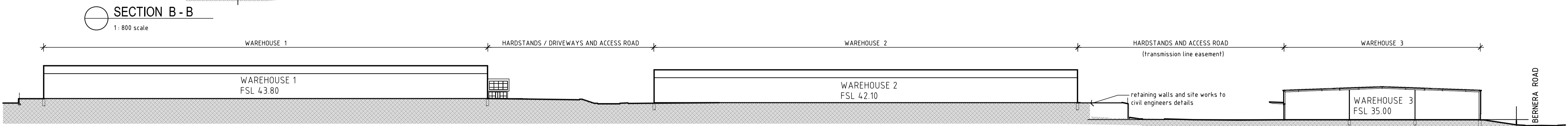
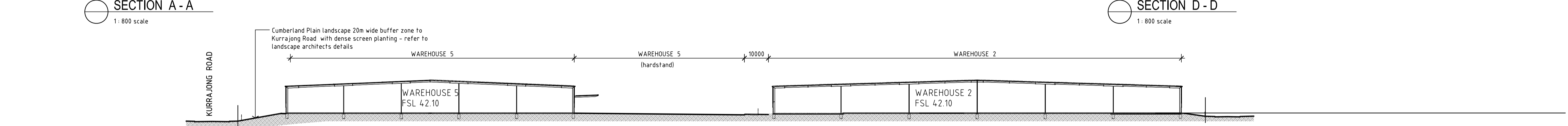
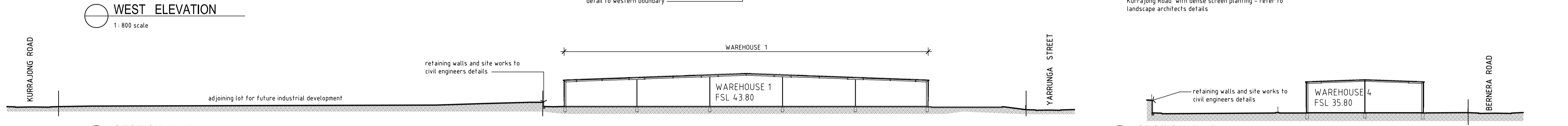
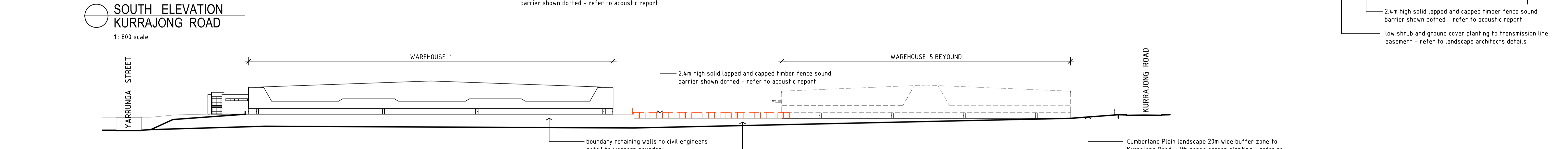
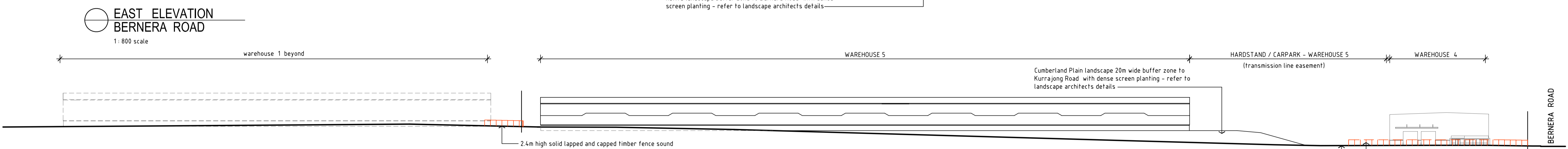
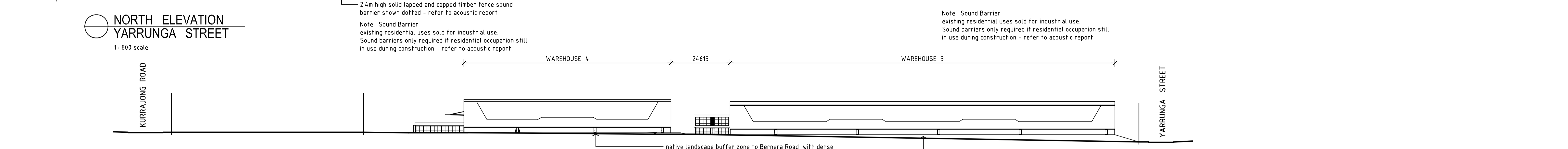
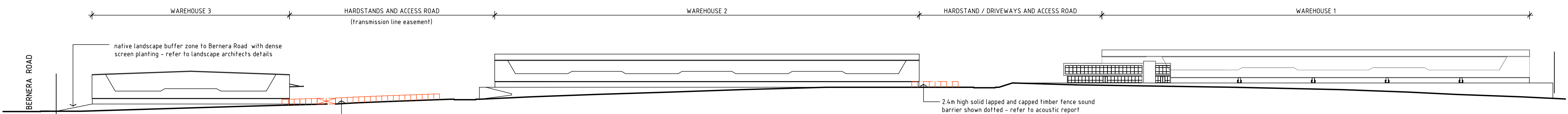
VIEW FROM SOUTH EAST



VIEW FROM NORTH EAST



VIEW FROM NORTH WEST



Issue Date Amendment

A 28/11/15 ISSUED FOR DEVELOPMENT APPLICATION

B 15/02/16 UPDATED BUILDINGS 1, 2 & 5

C 07/03/16 sound wall added to elevations

1: 800 scale @ A1 / 1: 1600 scale @ A3

Development Manager:

LOGOS LOGOS Property Group

Suite 12.02 / 167 Macquarie Street
Sydney NSW 2000

T. + 612 9119 6066 F. + 612 9231 0948

Project Manager:

DBL PROPERTY

Project / Development Managers
Level 6 / 432 Kent Street
Sydney NSW 2000

T. + 612 9267 4267 F. + 612 9267 4265

PRESTONS INDUSTRIAL ESTATE

PROPOSED WAREHOUSE DEVELOPMENT

Cnr YARRUNGA STREET & BERNERA ROAD, PRESTONS NSW

AXIS ARCHITECTURAL

4 / 112 Cronulla Street, Cronulla NSW 2230

p + 02 9523 7858 / m + 0414 954 405

e + david@axisarchitects.com.au

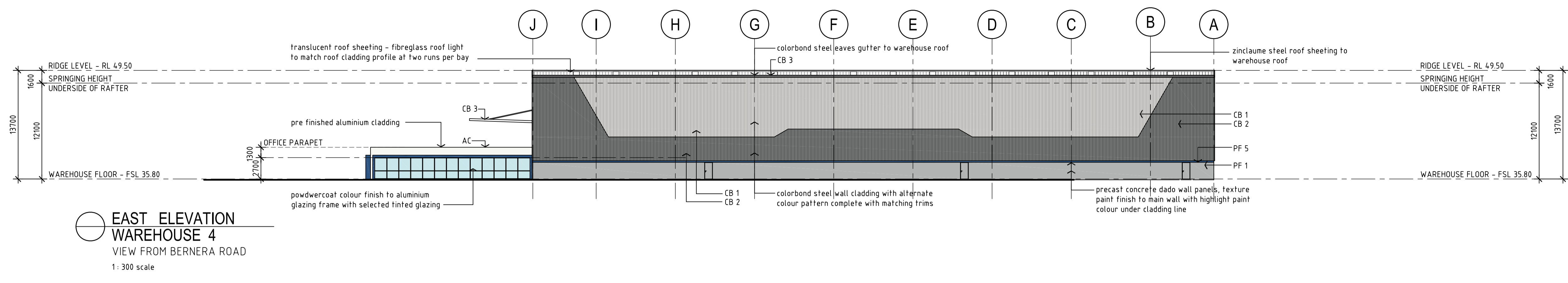
AXIS ARCHITECTURAL Pty Ltd - ABN 18 086 853 376
Nominated Architect - David McDonald NSW ARB No. 7997

Drawn: AA Project No: 140604 Drawing No: DA - A 107 Issue: C

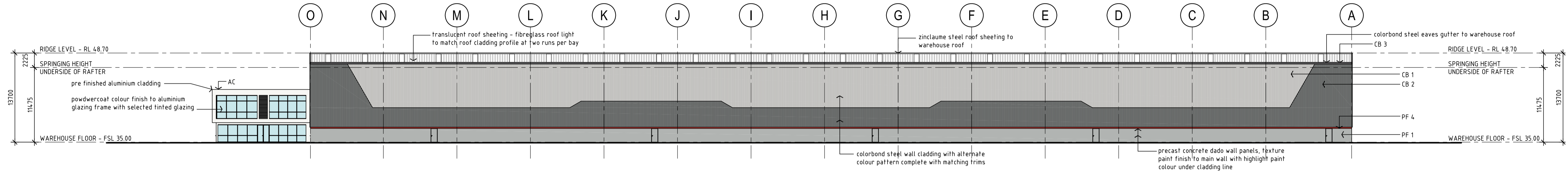
Date: November 2015 Scale: 1: 800 @ A1 / 1: 1600 @ A3

MATERIALS KEY	
CB 1	COLORBOND - SURFMIST
CB 2	COLORBOND - WINDSPRAY
CB 3	COLORBOND - BASLT
PF 1	PAINT FINISH - DULUX / MILTON MOON
PF 2	PAINT FINISH - DULUX / MANORBURN
PF 3	PAINT FINISH - DULUX / SOFT SUN
PF 4	PAINT FINISH - DULUX / RICH RED VIOLET
PF 5	PAINT FINISH - DULUX / BLUE BOTTOM BOAT
AC	ALUMINIUM CLADDING - PREFINISHED

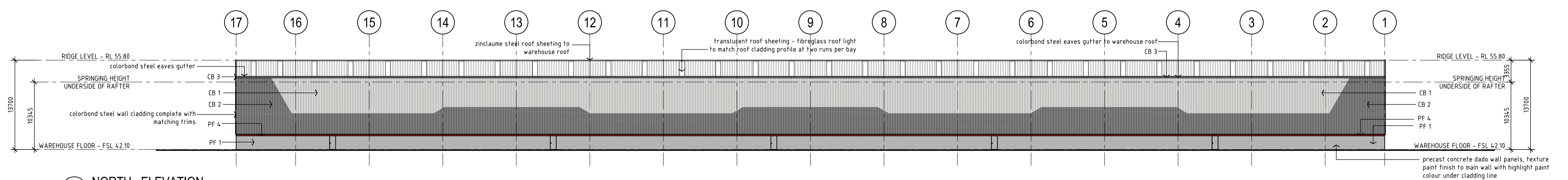
EXTERNAL COLOUR SCHEDULE			
CB 1	Colorbond steel - Surfmist	PF 2	Paint Finish - Dulux / Manorburn
CB 2	Colorbond steel - Windspray	PF 3	Paint Finish - Dulux - Soft Sun
CB 3	Colorbond steel - Basalt	PF 4	Paint Finish - Dulux - Paraburdo
PF 1	Paint finish - Dulux / Milton Moon	PF 5	Paint finish - Dulux - Blue Bottom Boat



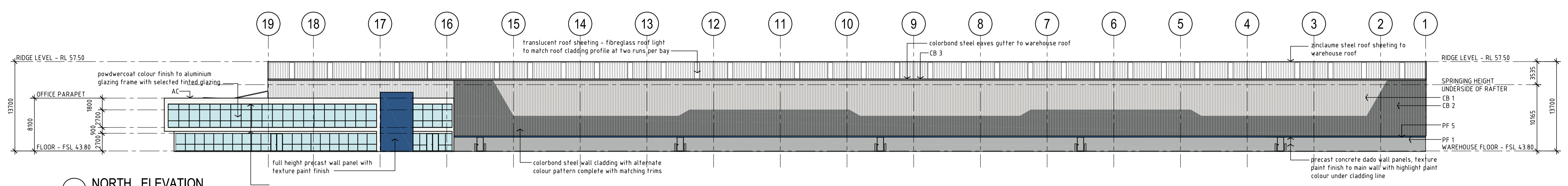
**EAST ELEVATION
WAREHOUSE 4**
VIEW FROM BERNERA ROAD
1: 300 scale



**EAST ELEVATION
WAREHOUSE 3**
VIEW FROM BERNERA ROAD
1: 300 scale



**NORTH ELEVATION
WAREHOUSE 2**
VIEW FROM YARRUNGA STREET
1: 300 scale



**NORTH ELEVATION
WAREHOUSE 1**
VIEW FROM YARRUNGA STREET
1: 300 scale

Issue: A 28/11/15 ISSUED FOR DEVELOPMENT APPLICATION
B 15/02/16 UPDATED BUILDINGS 1, 2 & 5

Scale: 1: 300 @ A1 / 1: 600 @ A3

Development Manager: **LOGOS** LOGOS Property Group
Suite 12.02 / 167 Macquarie Street
Sydney NSW 2000
F: + 612 9219 6066 F: + 612 9231 0948

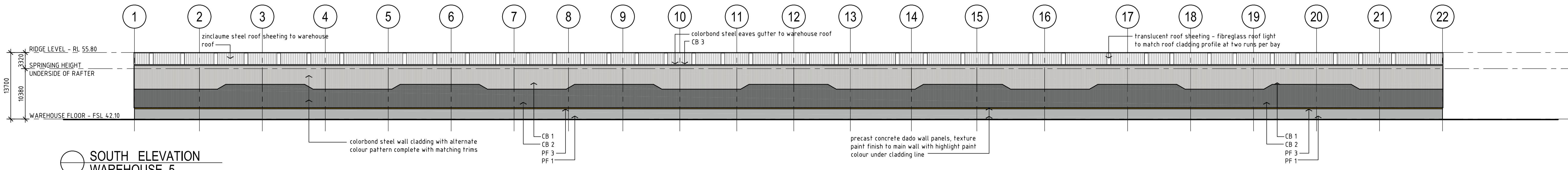
Project Manager: **DBL PROPERTY**
Project / Development Managers
Level 6 / 432 Kent Street
Sydney NSW 2000
F: + 612 9267 4267 F: + 612 9267 4265

PRESTONS INDUSTRIAL ESTATE
PROPOSED WAREHOUSE DEVELOPMENT
Cnr YARRUNGA STREET & BERNERA ROAD, PRESTONS NSW

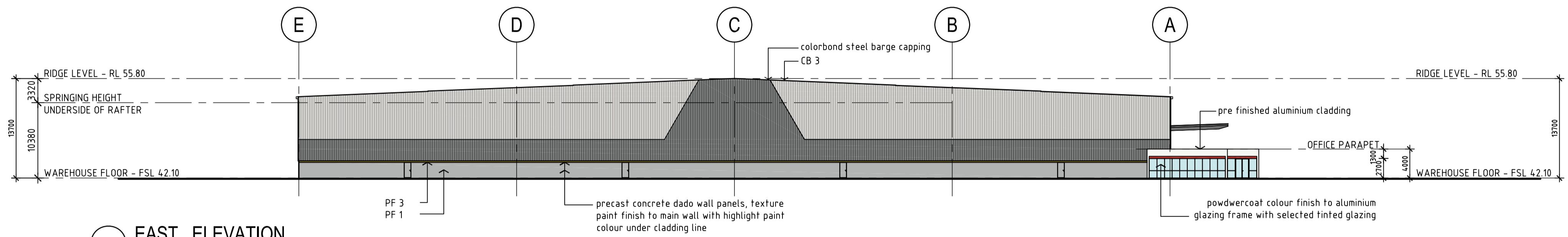
AXIS ARCHITECTURAL
4 / 112 Cronulla Street, Cronulla NSW 2230
p + 02 9523 7858 / m + 0414 954 405
e + david@axisarchitects.com.au
Nominated Architect - David McDonald NSW ARB No. 7997

Drawing: **COLOURED ELEVATIONS 1**
Drawn: AA
Date: November 2015
Scale: 1: 300 @ A1 / 1: 600 @ A3

Project No: 140604	Drawing No: DA - A 108	Issue: B
--------------------	------------------------	----------



SOUTH ELEVATION
WAREHOUSE 5
 VIEW FROM KURRAJONG ROAD
 1: 300 scale



EAST ELEVATION
WAREHOUSE 5
 1: 300 scale

MATERIALS KEY	
CB 1	COLORBOND - SURFMIST
CB 2	COLORBOND - WINDSPRAY
CB 3	COLORBOND - BASLT
PF 1	PAINT FINISH - DULUX / MILTON MOON
PF 2	PAINT FINISH - DULUX / MANORBURN
PF 3	PAINT FINISH - DULUX / DANDELION YELLOW
PF 4	PAINT FINISH - DULUX / PARABURDOO
PF 5	PAINT FINISH - DULUX / BLUE BOTTOM BOAT
AC	ALUMINIUM CLADDING - PREFINISHED

EXTERNAL COLOUR SCHEDULE	
	Colorbond steel - SurfMist
	Colorbond steel - Windspray
	Colorbond steel - Basalt
	Paint finish - Dulux / Milton Moon
	Paint finish - Dulux / Manorburn
	Paint finish - Dulux - Soft Sun
	Paint finish - Dulux - Paraburdo
	Paint finish - Dulux - Blue Bottom Boat
	Paint finish - Dulux - Gasgoyne Grey