

LEGEND:

LEVELS DATUM IS AHD.

EXISTING SITE LEVELS AND DETAILS BASED ON SURVEY INFORMATION PROVIDED.

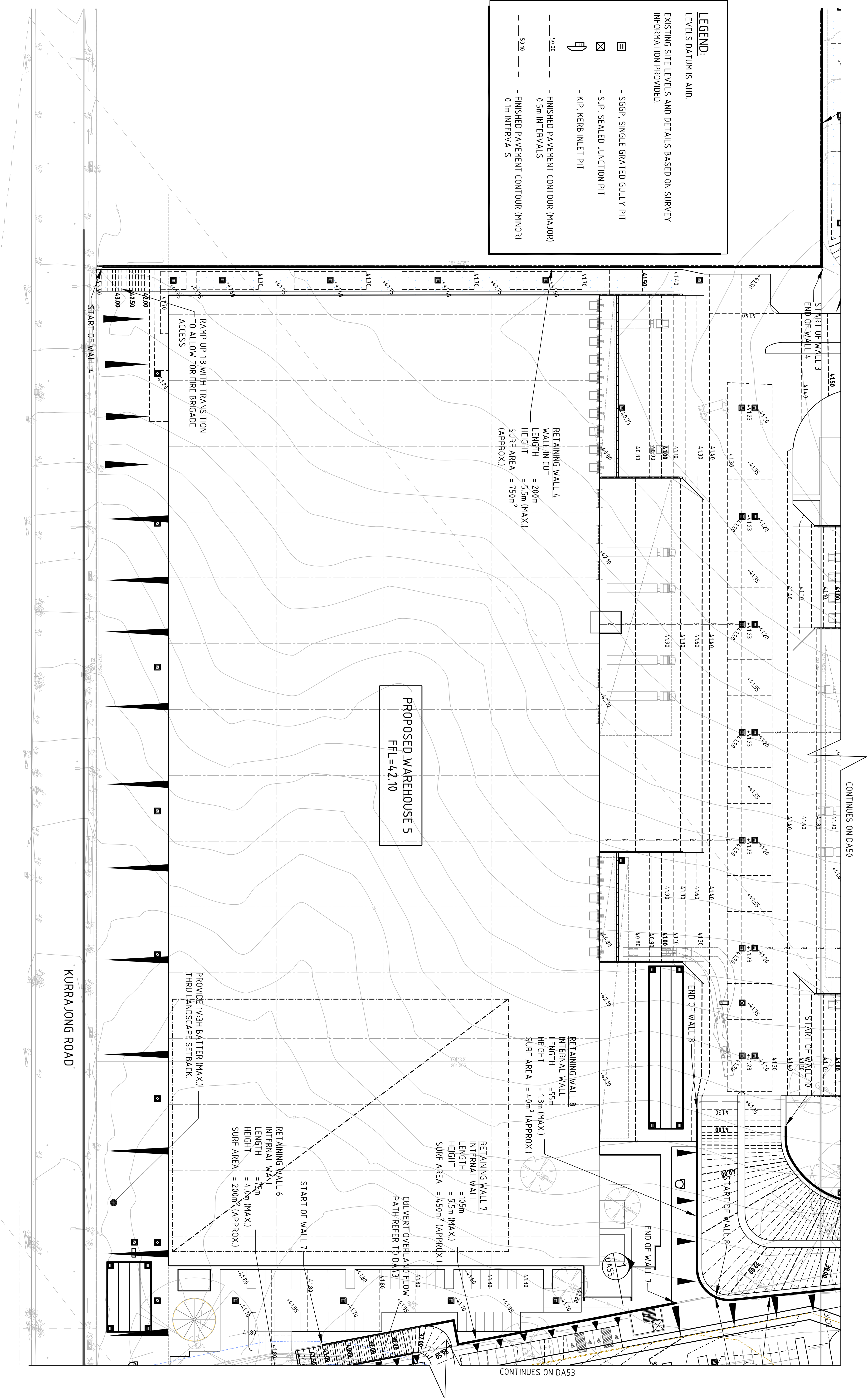
- SGGP, SINGLE GRATED GULLY PIT

- S-JP, SEALED JUNCTION PIT

- KIP, KERB INLET PIT

- FINISHED PAVEMENT CONTOUR (MAJOR) 0.5m INTERVALS

- FINISHED PAVEMENT CONTOUR (MINOR) 0.1m INTERVALS



FINISHED LEVELS SHEET 3
SCALE 1:500

FOR DEVELOPMENT
APPROVAL

NOTE: ALL LEVELS ARE INDICATIVE & MAY BE SUBJECT TO MINOR VARIATION TO SUIT DETAILED DESIGN.
SCALE 1:500 AT A1 SIZE SHEET

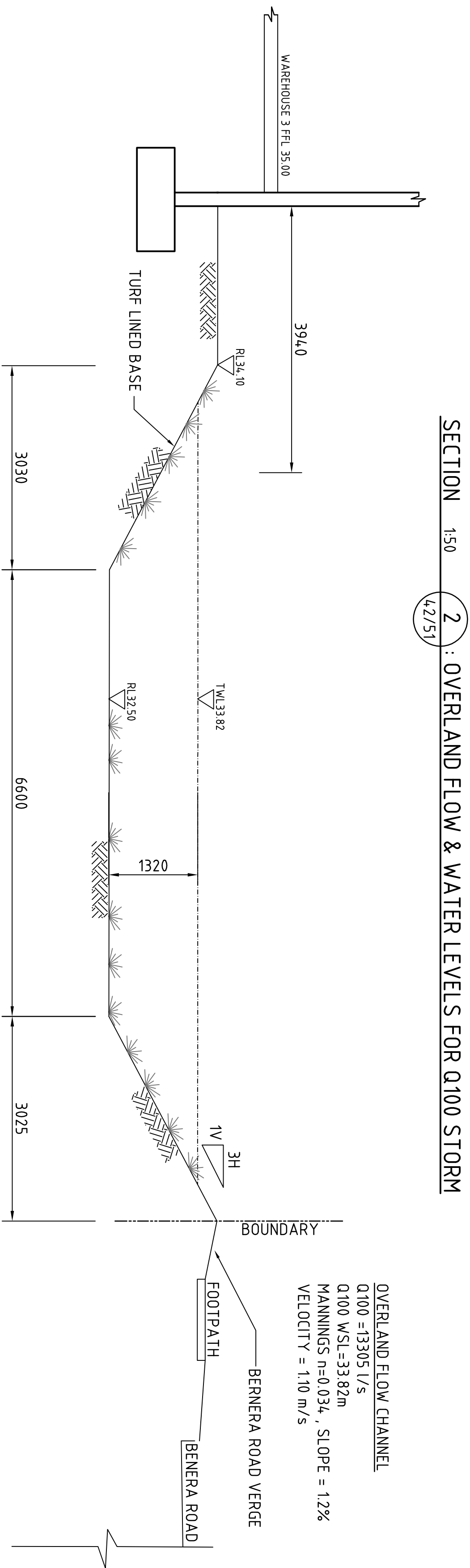
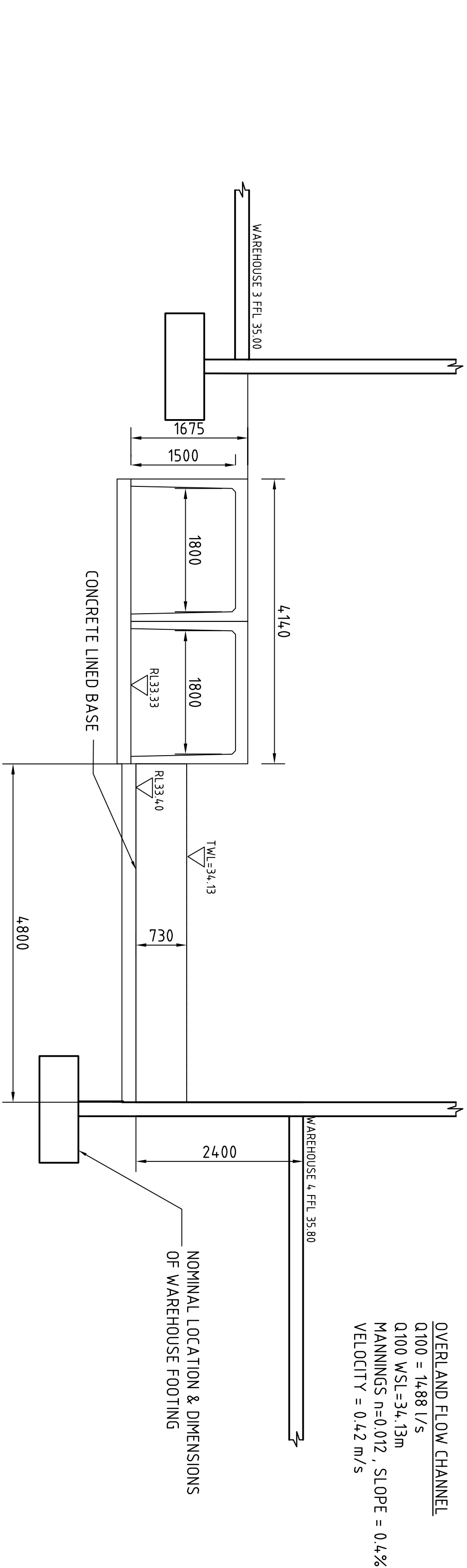
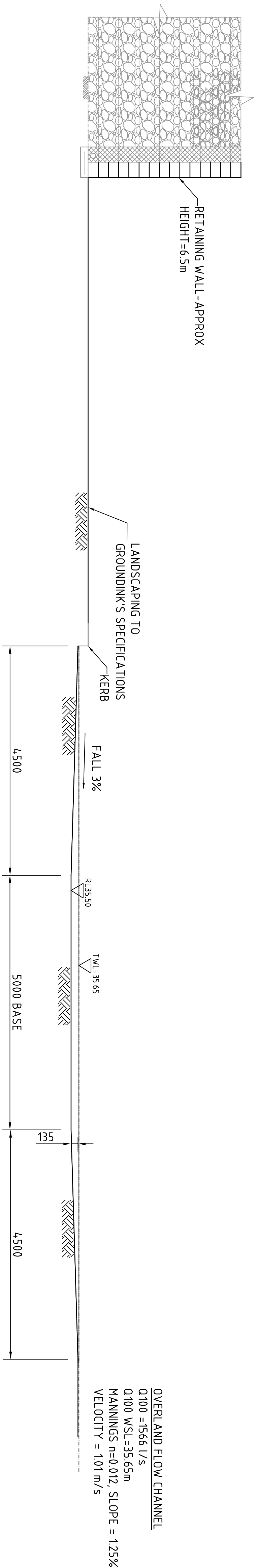
ISSUED FOR DEVELOPMENT APPROVAL	23.02.16	G
ISSUED FOR DEVELOPMENT APPROVAL	19.02.16	F
ISSUED FOR DEVELOPMENT APPROVAL	21.01.16	E
ISSUED FOR DEVELOPMENT APPROVAL	25.11.15	D
ISSUED FOR DEVELOPMENT APPROVAL	18.11.15	C
ISSUED FOR REVIEW	05.11.15	B
AMENDMENTS	DATE	ISSUE

CLIENT	LOGOS PROPERTY SUITE 02, LEVEL 12 167 MACQUARIE STREET SYDNEY NSW
PROJECT	PROPOSED DEVELOPMENT 32 YARRUNGA STREET PRESTONS NSW
CONSULTANT	COSTIN ROE CONSULTING PTY LTD Level 1, 8 Hindmarsh Street Melbourne VIC 3000 Tel: (03) 859 7989 Fax: (03) 9241 3761 email: mail@costinroe.com.au
DESIGNED	PSAWM
CHECKED	AT
DATE	
SCALE	
CAD REF.	8753.11-DA52

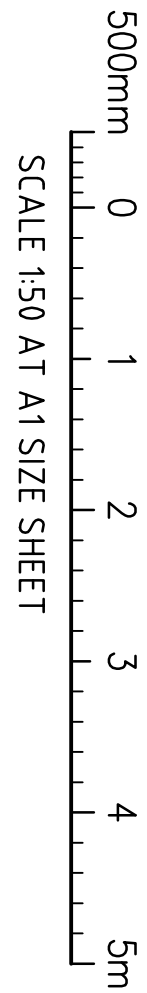
COSTIN ROE CONSULTING PTY LTD
Level 1, 8 Hindmarsh Street
Melbourne VIC 3000
Tel: (03) 859 7989 Fax: (03) 9241 3761
email: mail@costinroe.com.au

COSTIN ROE CONSULTING
Value in Engineering and Management

DRAWING TITLE	FINISHED LEVELS PLAN SHEET 3
DRAWING NO.	C08753.11-DA52
ISSUE	G



FOR DEVELOPMENT
APPROVAL



ARCHITECT										CLIENT										PROJECT										DRAWING TITLE									
										LOGOS PROPERTY										PROPOSED DEVELOPMENT										TYPICAL SECTIONS									
										SUITE 02, LEVEL 12										32 YARRUNGA STREET																			
										167 MACQUARIE STREET										CONSULTING ENGINEERS																			
										SYDNEY NSW										PRESTONS NSW										Level 1, 8 Windrunga Street									
										DESIGNED										DRAWN										CHECKED									
										DATE										SCALE										COP. REF.									
										18/11/15										A										8/153-11-DA55									
										ISSUE																													

