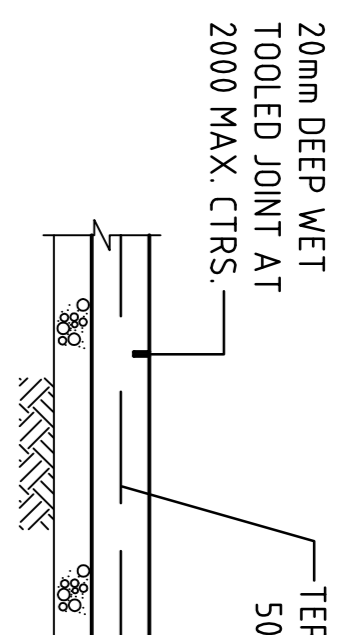
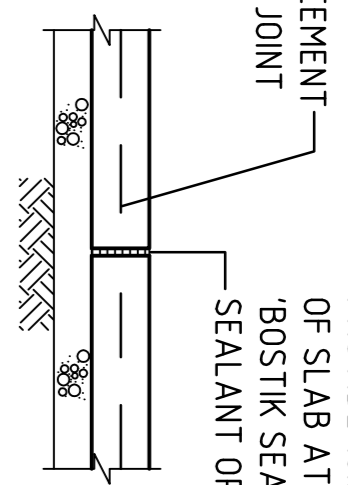


PEDESTRIAN SLAB PROFILE DETAIL

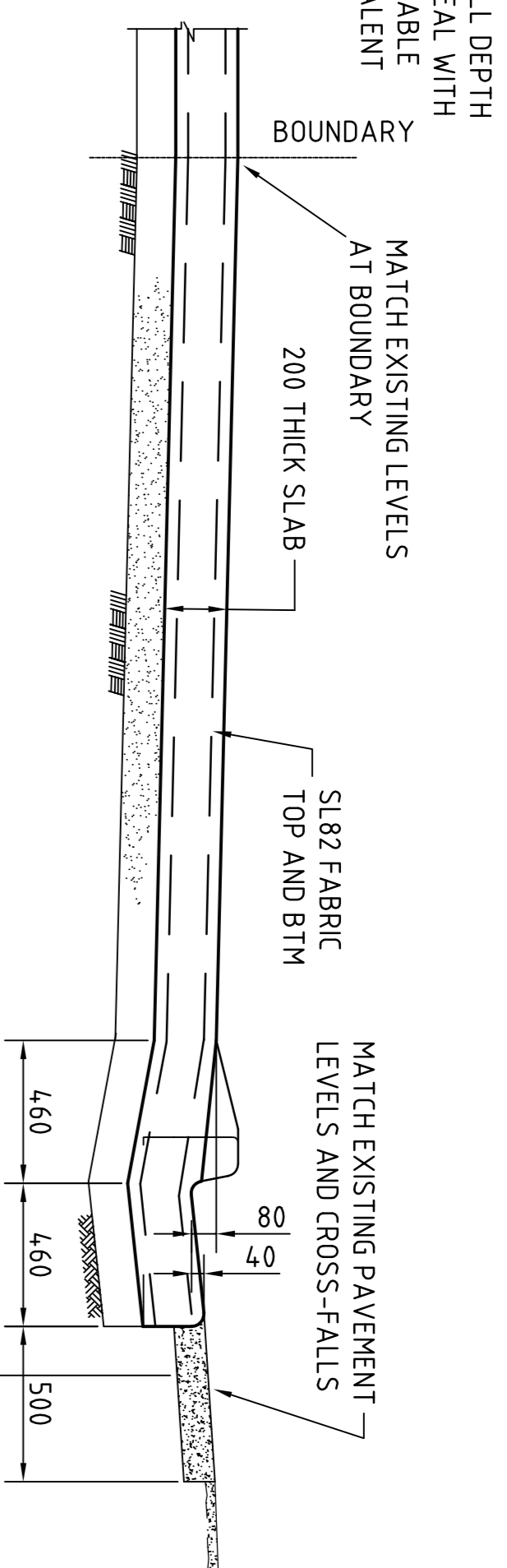


WET TOOLED JOINT

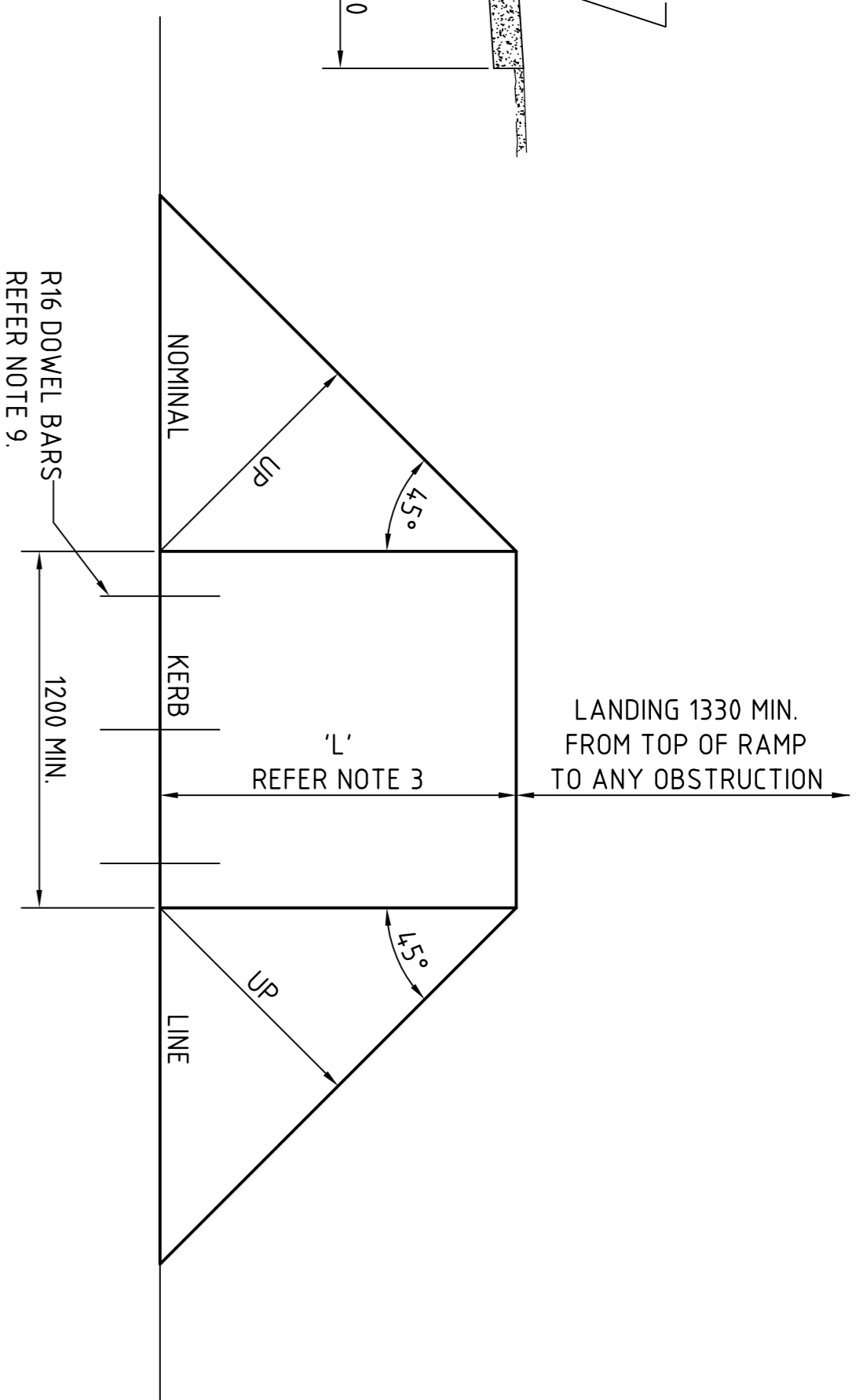


BUTT JOINT

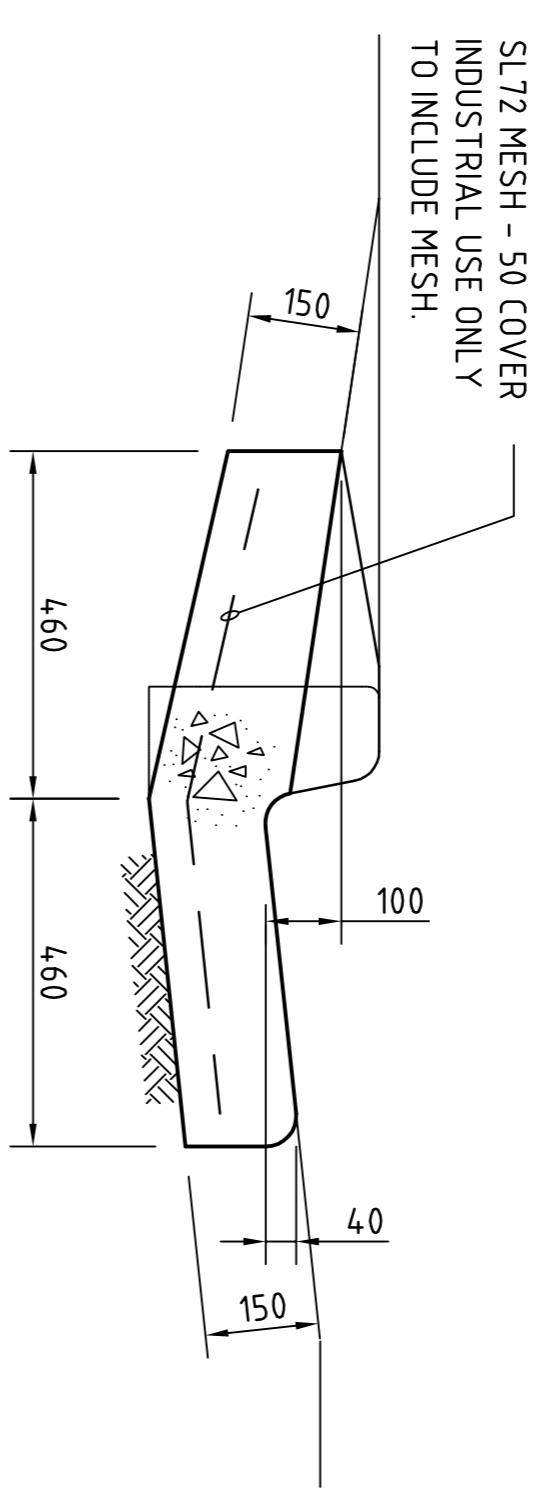
PEDESTRIAN SLAB DETAILS
SCALE 1:10



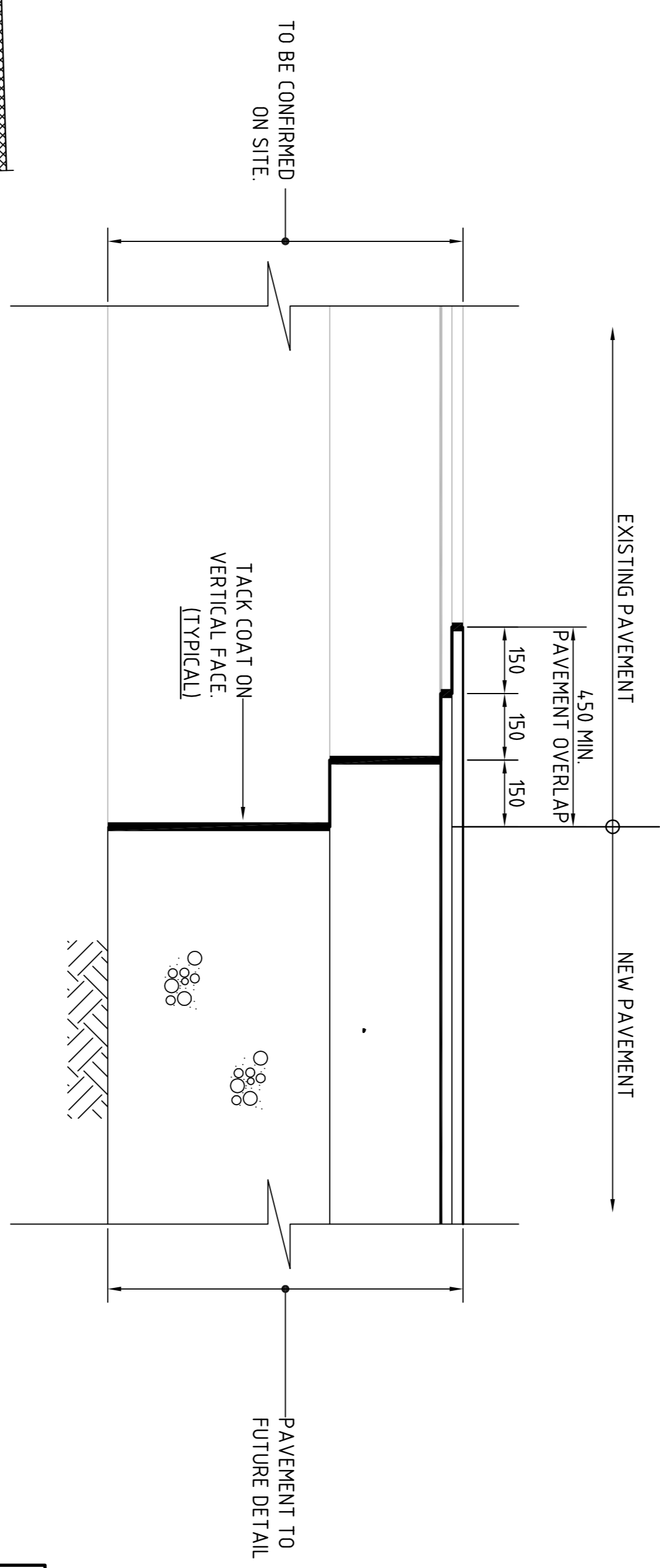
INDUSTRIAL VEHICULAR CROSS OVER DETAIL - IVC
SCALE 1:20



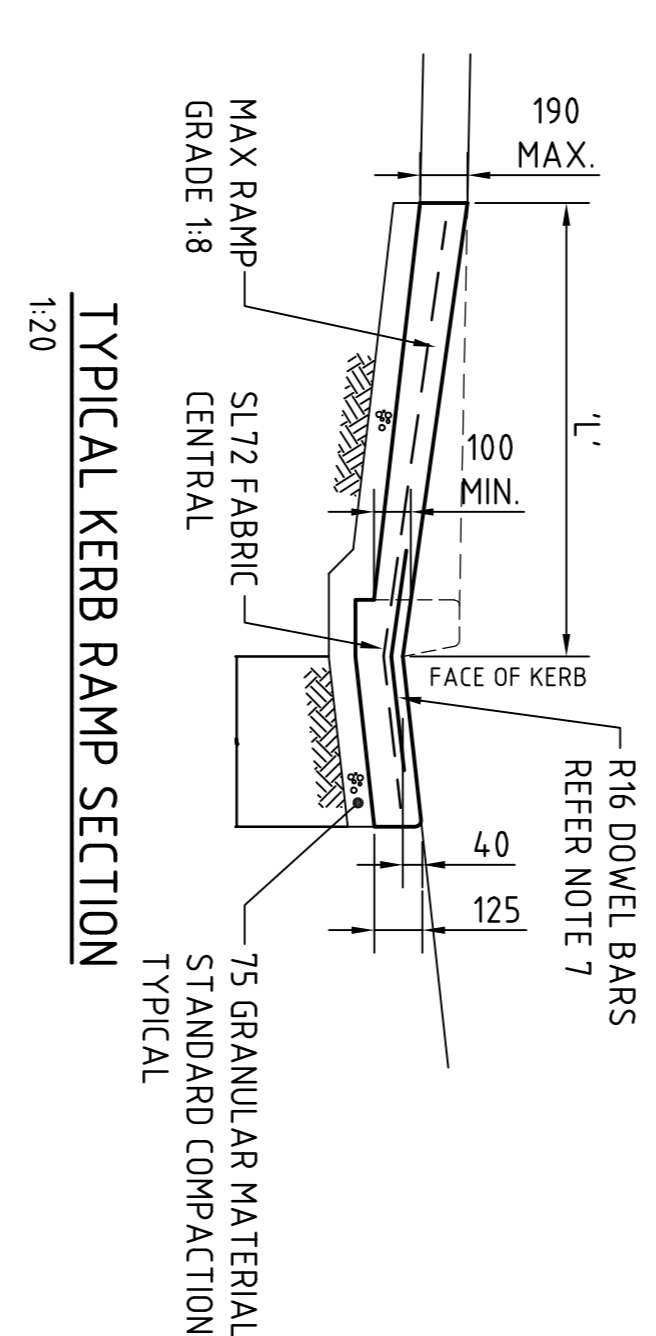
TYPICAL KERB RAMP DETAIL
1:20



VEHICULAR CROSSING SECTION - VC
SCALE 1:10



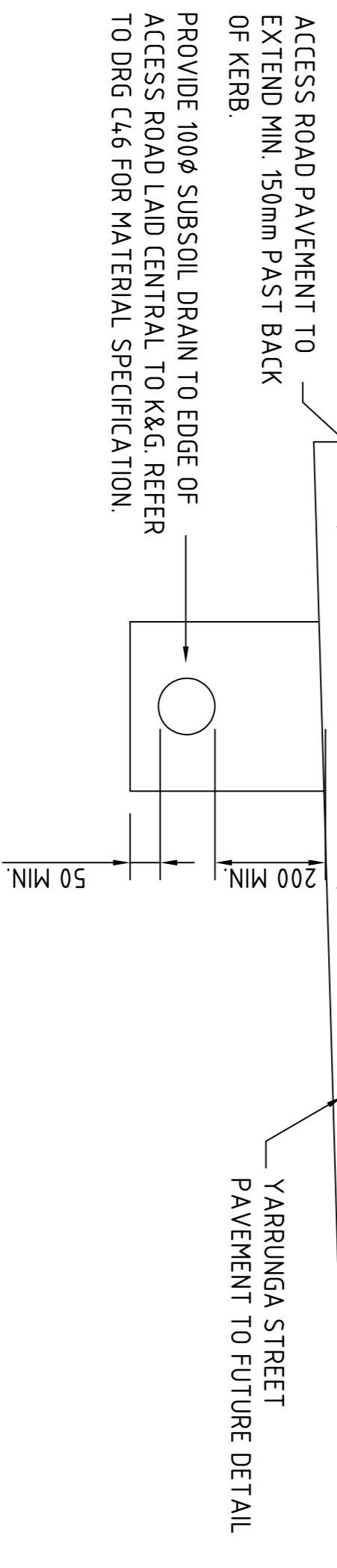
TYPICAL NEW / EXISTING PAVEMENT INTERFACE DETAIL
SCALE 1:10



TYPICAL KERB RAMP SECTION
1:20

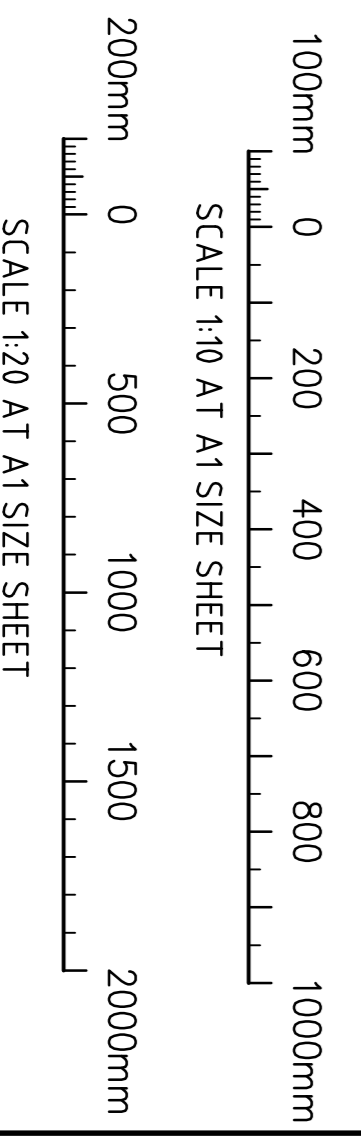
KERB RAMP NOTES:

1. KERB RAMP SHALL BE CONSTRUCTED WHERE INDICATED ON PLAN IN ACCORDANCE WITH AS1428.1-2001.
2. DIMENSION 'L' TO BE CONFIRMED ON SITE MIN. 1200mm MAX. 1520mm.
3. MAX GRADIENT TO BE 1:8
4. SPECIFIED STRENGTH OF CONCRETE SHALL BE f'c=25MPa AT 28 DAYS. CONCRETE TO HAVE BROOM FINISH AND ALL EDGES ABUTTING EXISTING STRUCTURES SHALL BE FINISHED WITH AN APPROVED EDGING TOOL.
5. ROAD BASECOURSE TO EXTEND BENEATH KERB RAMP'S MIN. THICKNESS OF 50mm TO BE MAINTAINED.
6. CONCRETE TO HAVE BROOM FINISH AND ALL EDGES ABUTTING EXISTING STRUCTURES SHALL BE FINISHED WITH AN APPROVED EDGING TOOL.
7. WHERE KERB RAMP IS PLACED BETWEEN EXISTING CONCRETE FOOTPATH AND GUTTER INSTALL R16 GALV. DOWELS 600 LONG AT 450 CTRS. WITH BOND BREAKER TAPE AT ONE END.



KERB & GUTTER (K&G) & SUBSOIL DETAIL
SCALE 1:10

CONCRETE QUALITY				
ELEMENT	SLOPE	AGGREGATE (MAX. SIZE)	CEMENT AD MIXTURE TYPE	f'c (MPa)
FOOTWAY	80	20	GP	25



FOR DEVELOPMENT APPROVAL

ISSUED FOR DEVELOPMENT APPROVAL	18.11.15	A
AMENDMENTS	DATE	ISSUE

ARCHITECT

CLIENT
LOGOS PROPERTY
SUITE 02, LEVEL 12
167 MACQUARIE STREET
SYDNEY NSW

PROJECT
PROPOSED DEVELOPMENT
32 YARRUNGA STREET
PRESTONS NSW

CONSULTANT
Coslin Roe Consulting Pty Ltd.

Level 1, 6 Miranda Street
Newport NSW 1505
Ph: (02) 955 5999 Fax: (02) 961-9791
email: mail@coslinroe.com.au @

CoslinRoe Consulting

Value in Engineering and Management

DRAWING TITLE
YARRUNGA STREET TYPICAL DETAILS
DRAWING No. **C08753-11-DA74**