

NOTE: REFER TO LANDSCAPE ARCHITECTS DETAILS FOR STREET VIEWS AND SECTIONS FOR SCREEN PLANTING

Issue	Date	Amendment
A	28/11/15	ISSUED FOR DEVELOPMENT APPLICATION
B	15/02/16	UPDATED BUILDINGS 1, 2 & 5
C	07/03/16	sound wall added to elevations

0 10 20 30 40 60 80 100m

1: 800 scale @ A1 / 1: 1600 scale @ A3

Development Manager:  
**LOGOS** LOGOS Property Group  
Suite 12.02 / 167 Macquarie Street  
Sydney NSW 2000  
t. + 612 9119 6066 f. + 612 9231 0948

Project Manager:  
**DBL PROPERTY**  
Project / Development Managers  
Level 6 / 432 Kent Street  
Sydney NSW 2000  
t. + 612 9267 4267 f. + 612 9267 4265

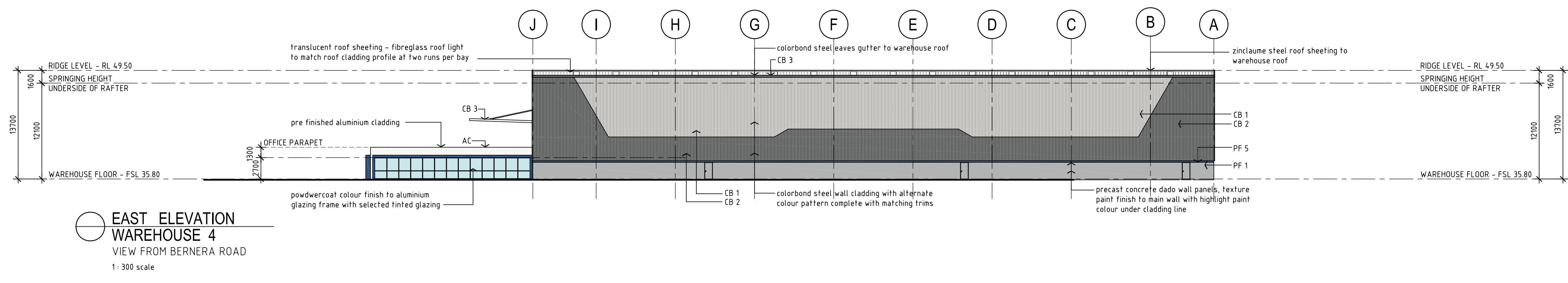
**PRESTONS INDUSTRIAL ESTATE**  
PROPOSED WAREHOUSE DEVELOPMENT  
Cnr YARRUNGA STREET & BERNERA ROAD, PRESTONS NSW

**AXIS ARCHITECTURAL**  
4 / 112 Cronulla Street, Cronulla NSW 2230  
p + 02 9523 7858 / m + 0414 954 405  
e + david@axisarchitects.com.au  
AXIS ARCHITECTURAL Pty Ltd - ABN 18 086 853 376  
Nominated Architect - David McDonald NSW ARB No. 7997

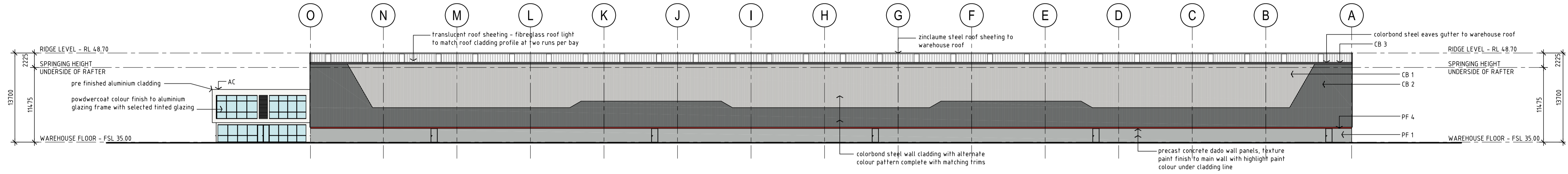
Drawn: AA	Project No: 140604	Drawing No: DA - A 107	Issue: C
Date: November 2015			
Scale: 1: 800 @ A1 1: 1600 @ A3			

MATERIALS KEY	
CB 1	COLORBOND - SURFMIST
CB 2	COLORBOND - WINDSPRAY
CB 3	COLORBOND - BASLT
PF 1	PAINT FINISH - DULUX / MILTON MOON
PF 2	PAINT FINISH - DULUX / MANORBURN
PF 3	PAINT FINISH - DULUX / SOFT SUN
PF 4	PAINT FINISH - DULUX / RICH RED VIOLET
PF 5	PAINT FINISH - DULUX / BLUE BOTTOM BOAT
AC	ALUMINIUM CLADDING - PREFINISHED

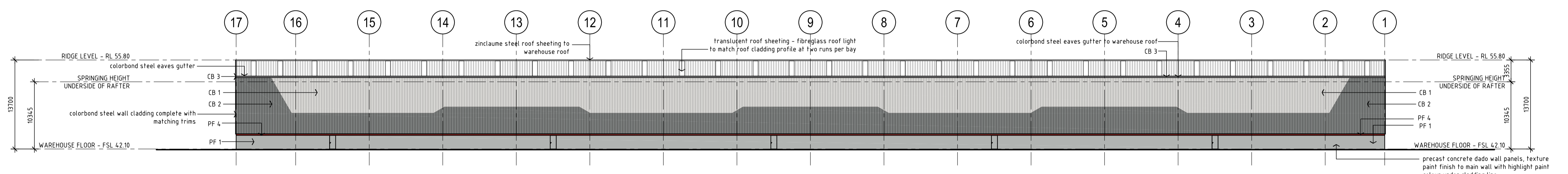
EXTERNAL COLOUR SCHEDULE			
CB 1	Colorbond steel - Surfmist	PF 2	Paint Finish - Dulux / Manorburn
CB 2	Colorbond steel - Windspray	PF 3	Paint Finish - Dulux - Soft Sun
CB 3	Colorbond steel - Basalt	PF 4	Paint Finish - Dulux - Paraburdo
PF 1	Paint finish - Dulux / Milton Moon	PF 5	Paint finish - Dulux - Blue Bottom Boat



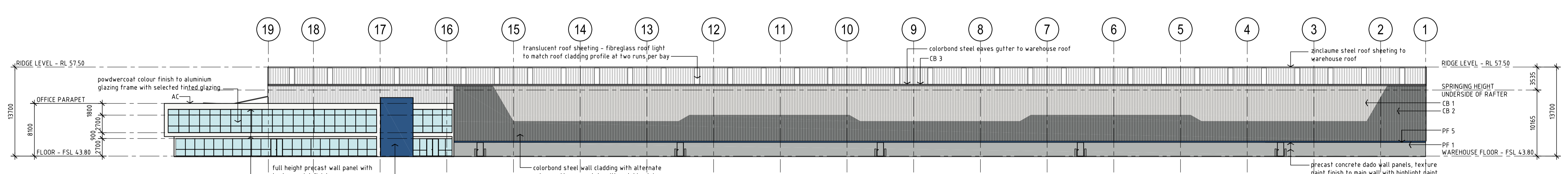
**EAST ELEVATION  
WAREHOUSE 4**  
VIEW FROM BERNERA ROAD  
1: 300 scale



**EAST ELEVATION  
WAREHOUSE 3**  
VIEW FROM BERNERA ROAD  
1: 300 scale



**NORTH ELEVATION  
WAREHOUSE 2**  
VIEW FROM YARRUNGA STREET  
1: 300 scale



**NORTH ELEVATION  
WAREHOUSE 1**  
VIEW FROM YARRUNGA STREET  
1: 300 scale

Issue Date Amendment  
 A 28/11/15 ISSUED FOR DEVELOPMENT APPLICATION  
 B 15/02/16 UPDATED BUILDINGS 1, 2 & 5

0 5 10 20 30m  
 0 10 20 40 60m  
 1: 300 scale @ A1 / 1: 600 scale @ A3

Development Manager:  
**LOGOS** LOGOS Property Group  
 Suite 12.02 / 167 Macquarie Street  
 Sydney NSW 2000  
 t. + 612 9219 6066 f. + 612 9231 0948

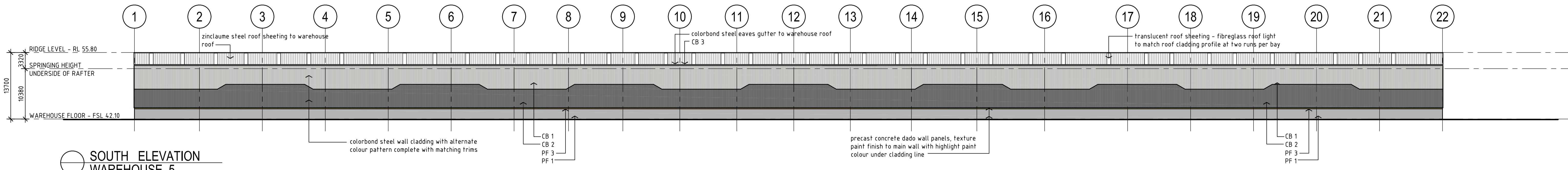
Project Manager:  
**DBL PROPERTY**  
 Project / Development Managers  
 Level 6 / 432 Kent Street  
 Sydney NSW 2000  
 t. + 612 9267 4267 f. + 612 9267 4265

**PRESTONS INDUSTRIAL ESTATE**  
 PROPOSED WAREHOUSE DEVELOPMENT  
 Cnr YARRUNGA STREET & BERNERA ROAD, PRESTONS NSW

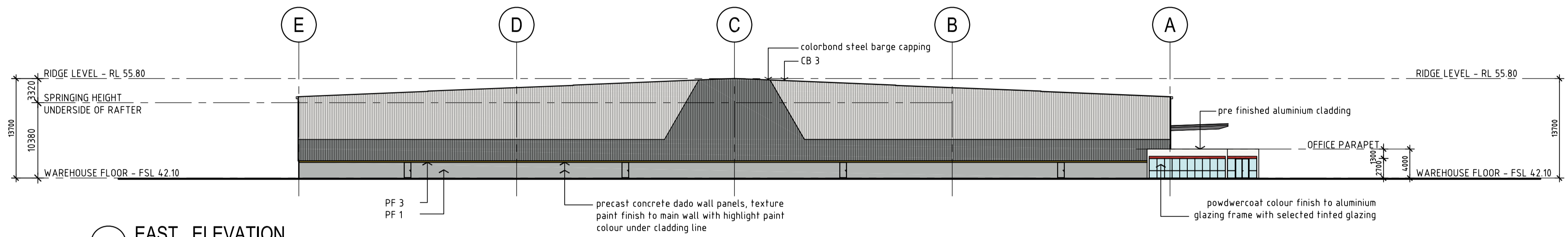
**AXIS ARCHITECTURAL**  
 4 / 112 Cronulla Street, Cronulla NSW 2230  
 p + 02 9523 7858 / m + 0414 954 405  
 e + david@axisarchitects.com.au  
 AXIS ARCHITECTURAL Pty Ltd - ABN 18 086 853 376  
 Nominated Architect - David McDonald NSW ARB No. 7997

Drawn: AA  
 Date: November 2015  
 Scale: 1: 300 @ A1  
 1: 600 @ A3

Project No: 140604  
 Drawing No: DA - A 108  
 Issue: B



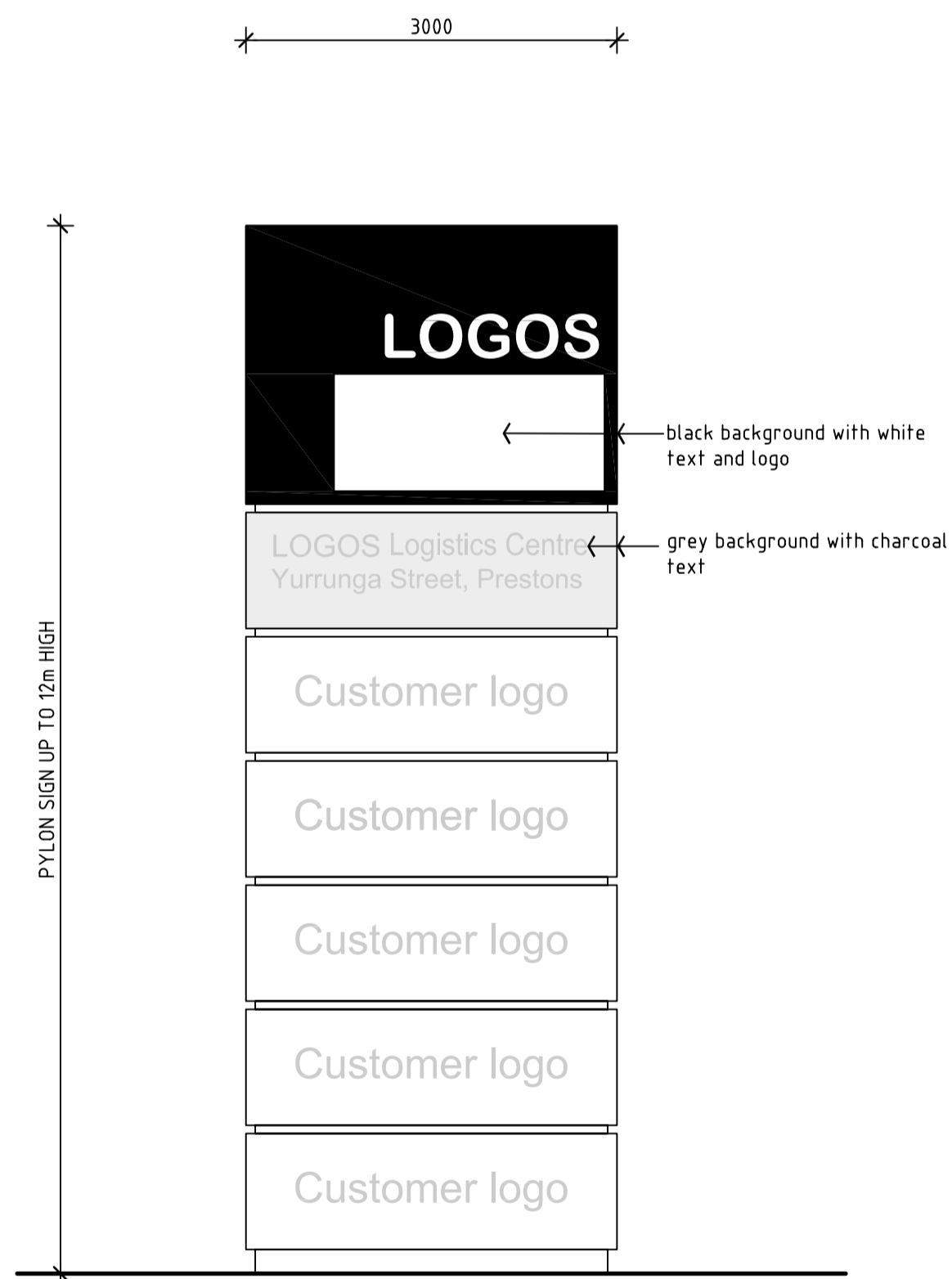
**SOUTH ELEVATION**  
**WAREHOUSE 5**  
 VIEW FROM KURRAJONG ROAD  
 1: 300 scale



**EAST ELEVATION**  
**WAREHOUSE 5**  
 1: 300 scale

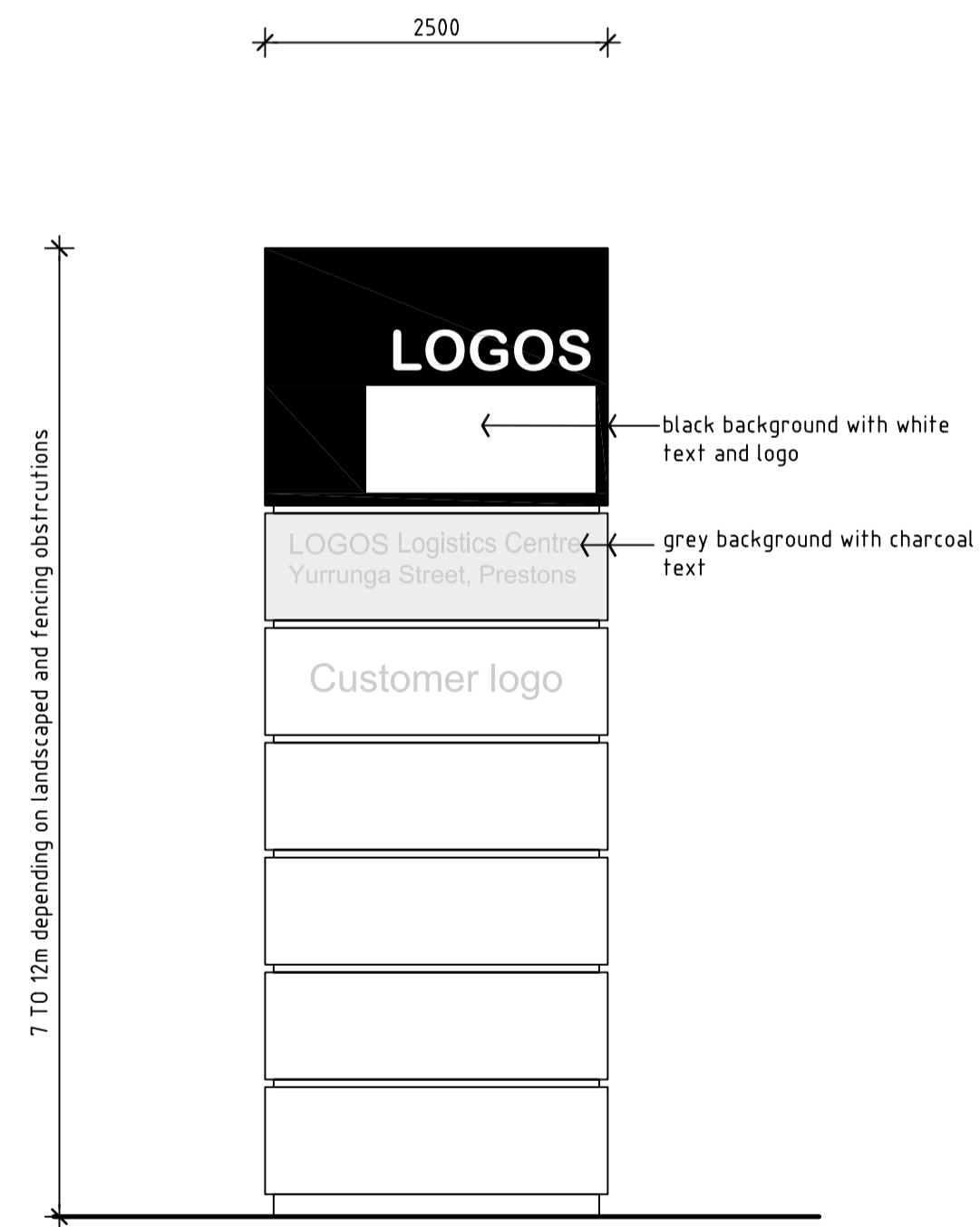
MATERIALS KEY	
CB 1	COLORBOND - SURFMIST
CB 2	COLORBOND - WINDSPRAY
CB 3	COLORBOND - BASLT
PF 1	PAINT FINISH - DULUX / MILTON MOON
PF 2	PAINT FINISH - DULUX / MANORBURN
PF 3	PAINT FINISH - DULUX / DANDELION YELLOW
PF 4	PAINT FINISH - DULUX / PARABURDOO
PF 5	PAINT FINISH - DULUX / BLUE BOTTOM BOAT
AC	ALUMINIUM CLADDING - PREFINISHED

EXTERNAL COLOUR SCHEDULE	
CB 1	Colorbond steel - SurfMist
CB 2	Colorbond steel - Windspray
CB 3	Colorbond steel - Basalt
PF 1	Paint finish - Dulux / Milton Moon
PF 2	Paint Finish - Dulux / Manorburn
PF 3	Paint finish - Dulux - Soft Sun
PF 4	Paint finish - Dulux - Paraburdo
PF 5	Paint finish - Dulux - Blue Bottom Boat
PF 6	Paint finish - Dulux - Gasgoyne Grey



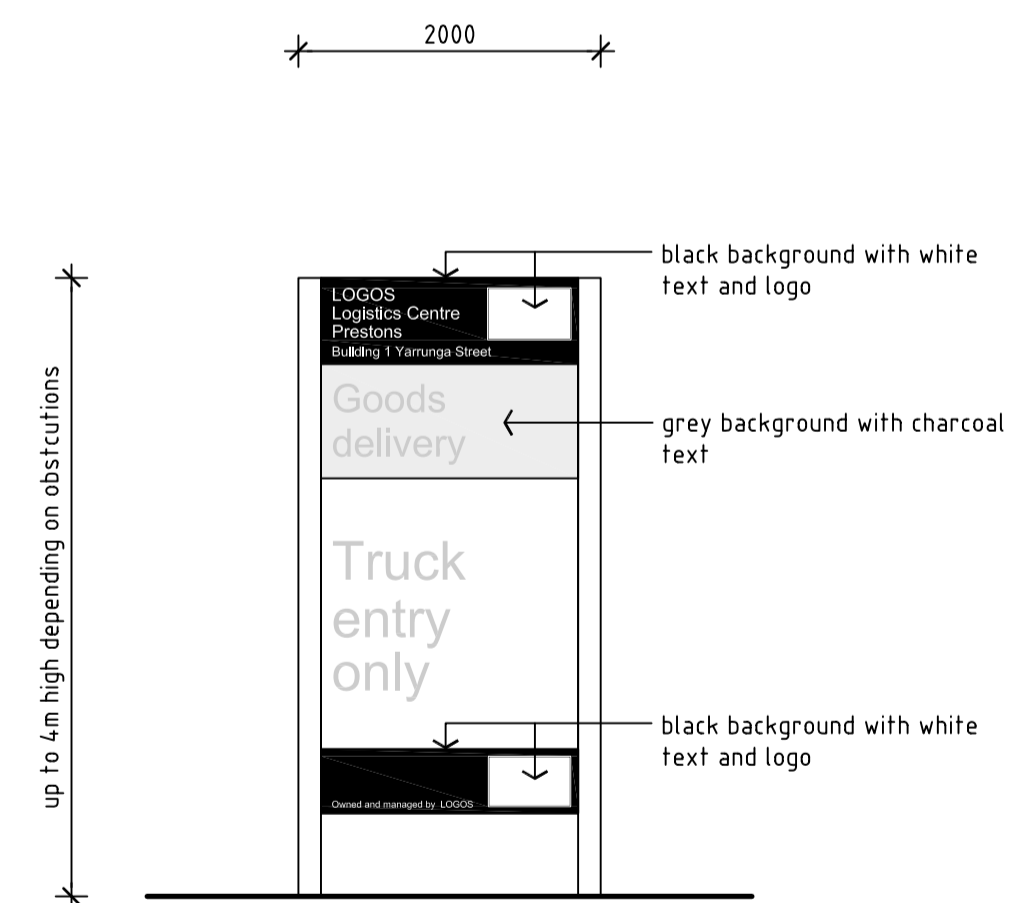
**ESTATE AND TENANT IDENTIFICATION PYLON SIGN**

MAIN ESTATE PYLON SIGN LOCATED ON INTERSECTION OF YARRUNGA STREET AND BERNERA ROAD



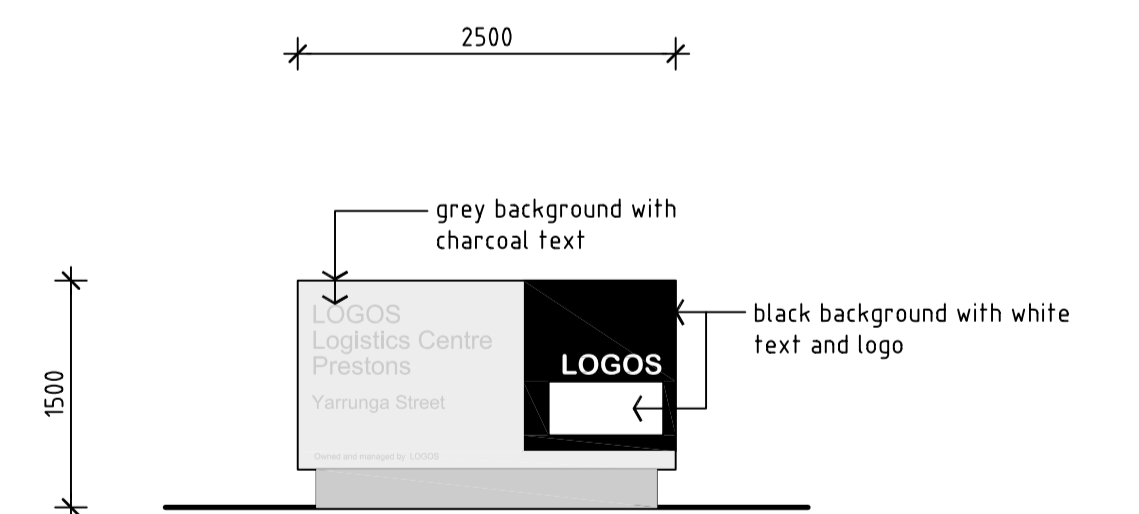
**BUILDING TENANT PYLON SIGN**

BUILDING TENANT PYLON SIGNS LOCATED AT ENTRY POINT TO INDIVIDUAL BUILDINGS



**WAY FINDING SIGNAGE**

INDIVIDUAL WAYFINDING SIGNAGE LOCAED AS REQUIRED BY TENANT FOR EACH BUILDING



**STREET ADDRESS MONOLITH SIGN**

STREET ADDRESS MONILTH SIGNS LOCATED AT PRIVATE ACCESS ROADS



VIEW FROM SOUTH EAST  
 GROUND LEVEL VIEW ALONG KURRAJONG ROAD  
 VIEW TOWARDS WEST DIRECTION

Issue: A 23/01/16 Amendment: ISSUED FOR DEVELOPMENT APPLICATION

Development Manager:  
**LOGOS** LOGOS Property Group  
 Suite 12.02 / 167 Macquarie Street  
 Sydney NSW 2000  
 T: + 61 2 9119 6066 F: + 61 2 9231 0948

Project Manager:  
**DBL PROPERTY**  
 Project / Development Managers  
 Level 6 / 432 Kent Street  
 Sydney NSW 2000  
 T: + 61 2 9267 4267 F: + 61 2 9267 4265

Project:  
**PRESTONS INDUSTRIAL ESTATE**  
 PROPOSED WAREHOUSE DEVELOPMENT  
 Cnr YARRUNGA STREET & BERNERA ROAD, PRESTONS NSW

**AXIS ARCHITECTURAL**  
 4 / 112 Cronulla Street, Cronulla NSW 2230  
 p + 02 9523 7858 / m + 0414 954 405  
 e + david@axisarchitects.com.au  
**axis** AXIS ARCHITECTURAL Pty Ltd - ABN 18 086 853 376  
 Nominated Architect - David McDonald NSW ARB No. 7997

Drawing:  
**SITE PERSPECTIVE - 1**  
 INDICATIVE VIEW  
 Drawn: AA Date: November 2015 Scale: not to scale  
 Project No: 140604 Drawing No: DA - A 111 Issue: A



VIEW FROM SOUTH WEST  
GROUND LEVEL VIEW ALONG KURRAJONG ROAD  
LOOKING TOWARDS EAST DIRECTION



AERIAL VIEW FROM SOUTH EAST

Issue: A Date: 23/01/16 Amendment: ISSUED FOR DEVELOPMENT APPLICATION

Development Manager:  
**LOGOS** LOGOS Property Group  
 Suite 12.02 / 167 Macquarie Street  
 Sydney NSW 2000  
 T: + 61 2 9119 6066 F: + 61 2 9231 0948

Project Manager:  
**DBL PROPERTY**  
 Project / Development Managers  
 Level 6 / 432 Kent Street  
 Sydney NSW 2000  
 T: + 61 2 9267 4267 F: + 61 2 9267 4265

Project:  
**PRESTONS INDUSTRIAL ESTATE**  
 PROPOSED WAREHOUSE DEVELOPMENT  
 Cnr YARRUNGA STREET & BERNERA ROAD, PRESTONS NSW

**AXIS ARCHITECTURAL**  
 4 / 112 Cronulla Street, Cronulla NSW 2230  
 p + 02 9523 7858 / m + 0414 954 405  
 e + david@axisarchitects.com.au  
**AXIS** AXIS ARCHITECTURAL Pty Ltd - ABN 18 086 853 376  
 Nominated Architect - David McDonald NSW ARB No. 7997



Drawing:  
 SITE PERSPECTIVE - 3  
 INDICATIVE VIEW

Drawn: AA	Project No:	Drawing No:	Issue:
Date: November 2015	140604	DA - A 113	A
Scale: not to scale			