

# Peak Apartments

Position: P1B

Level: 30

RL: 98.225 (Camera Height)

## FOR INFORMATION ONLY

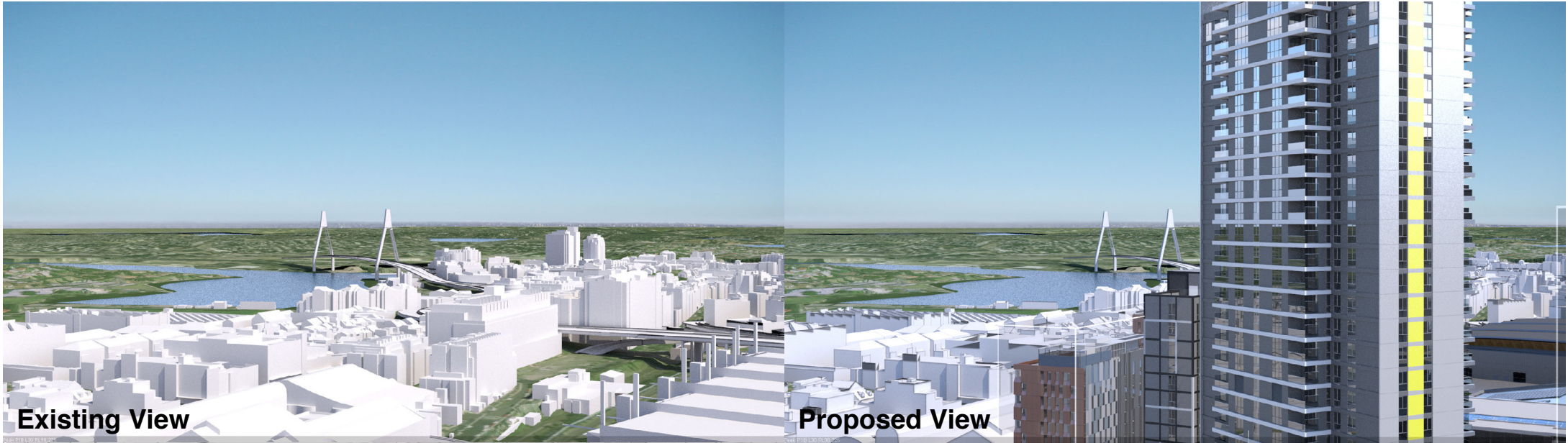
These images have been produced for view analysis purposes only.

Proposed outer parameters for built form ("parameter boxes") shown form part of State Significant Development Application SSD 5778-2013 (SSDA2 Concept Proposal for Darling Square) and do not form part of this development application.

Building forms shown include those approved which include State Significant Development Applications SSD 5752 (SSDA1 ICC Core Facilities), SSD 6010 (SSDA3 W2 Site - Student Accommodation), SSD 6011 (SSDA5 SW Plot Mixed Use), SSD 6116 (SSDA6 ICC Hotel) and SSD 6626 (SSDA7 NE Plot Mixed Use). Building forms currently under assessment are also shown and include SSD 6013 Mod 1 (SSDA4 NW Plot Mixed Use), SSD 6633 (SSDA9 SE Plot Mixed Use) and SSD 7021 (SSDA10 North Plot (Darling Exchange) and Square).

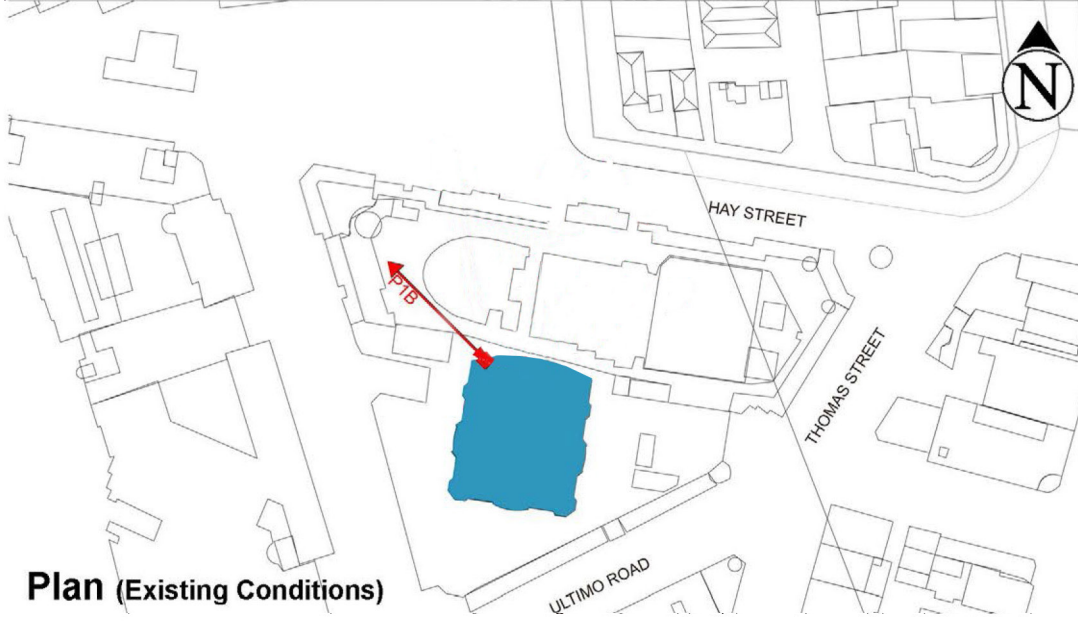
**LEGEND:** 4

- Key Building
- ← View Direction (50mm Camera)
- Parameter Boxes in the Haymarket Precinct

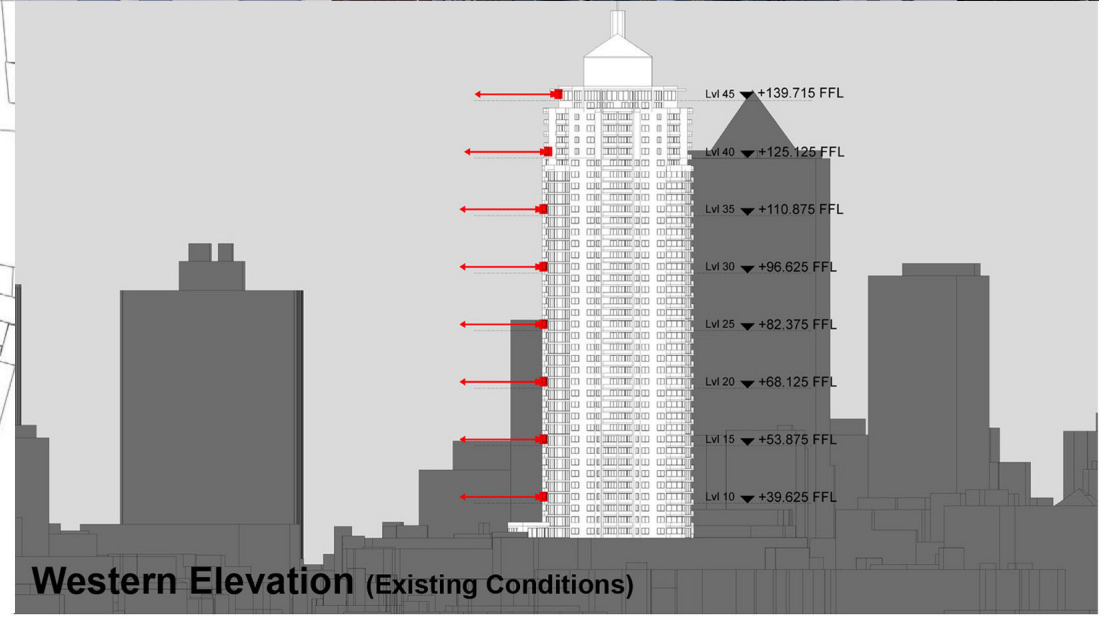


Existing View

Proposed View



Plan (Existing Conditions)



Western Elevation (Existing Conditions)

# Peak Apartments

Position: P1B

Level: 25

RL: 83.975 (Camera Height)

**FOR INFORMATION ONLY**

These images have been produced for view analysis purposes only.

Proposed outer parameters for built form ("parameter boxes") shown form part of State Significant Development Application SSD 5778-2013 (SSDA2 Concept Proposal for Darling Square) and do not form part of this development application.

Building forms shown include those approved which include State Significant Development Applications SSD 5752 (SSDA1 ICC Core Facilities), SSD 6010 (SSDA3 W2 Site - Student Accommodation), SSD 6011 (SSDA5 SW Plot Mixed Use), SSD 6116 (SSDA6 ICC Hotel) and SSD 6626 (SSDA7 NE Plot Mixed Use). Building forms currently under assessment are also shown and include SSD 6013 Mod 1 (SSDA4 NW Plot Mixed Use), SSD 6633 (SSDA9 SE Plot Mixed Use) and SSD 7021 (SSDA10 North Plot (Darling Exchange) and Square.

**LEGEND:** **5**

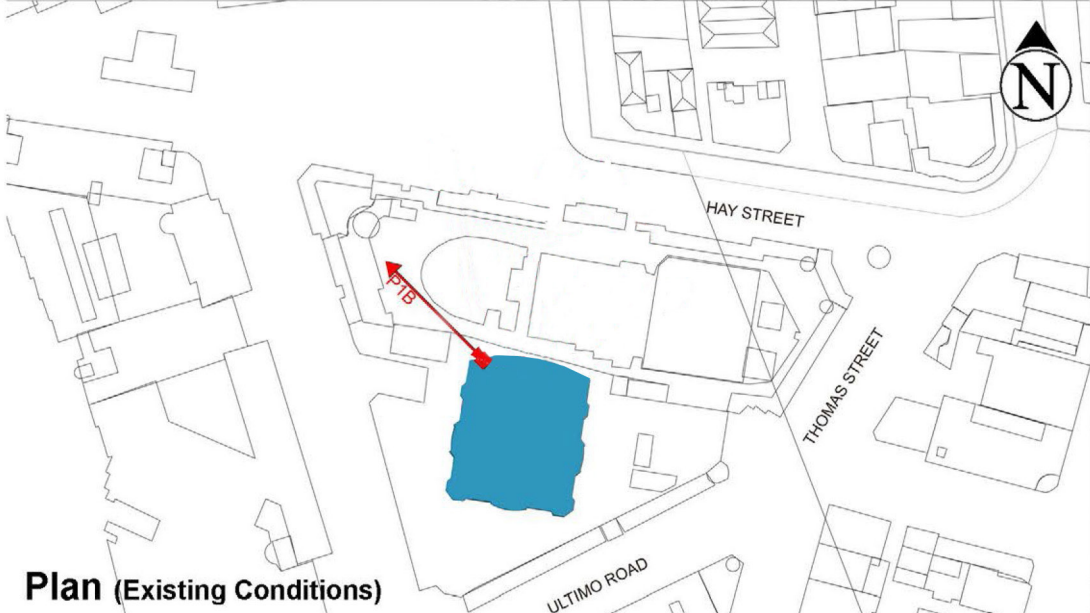
- Key Building
- ← View Direction (50mm Camera)
- Parameter Boxes in the Haymarket Precinct



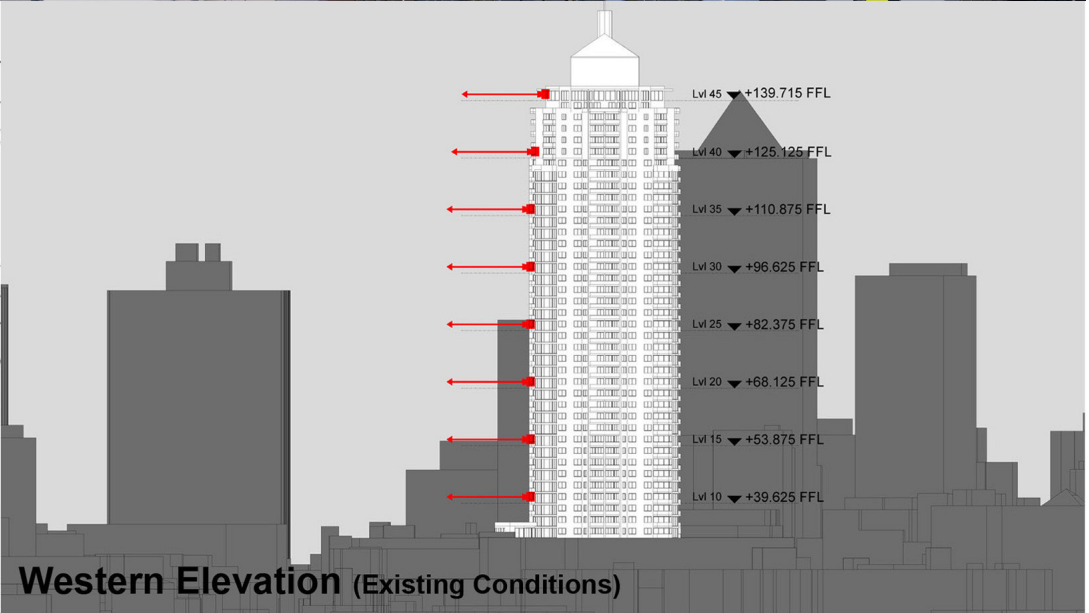
**Existing View**



**Proposed View**



**Plan (Existing Conditions)**



**Western Elevation (Existing Conditions)**

# Peak Apartments

Position: P1B

Level: 20

RL: 69.725 (Camera Height)

## FOR INFORMATION ONLY

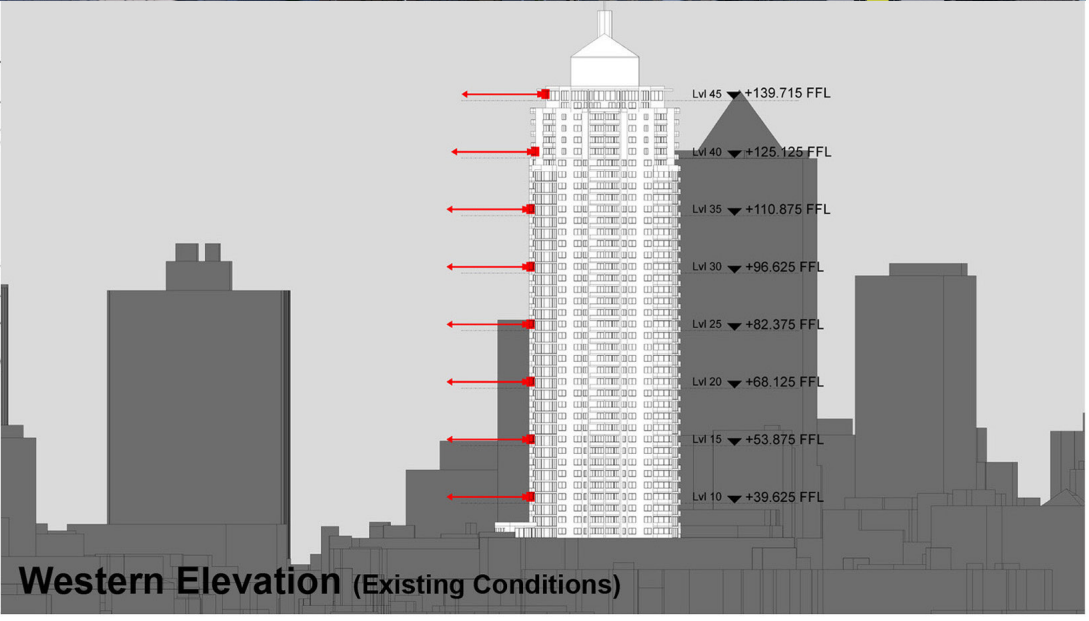
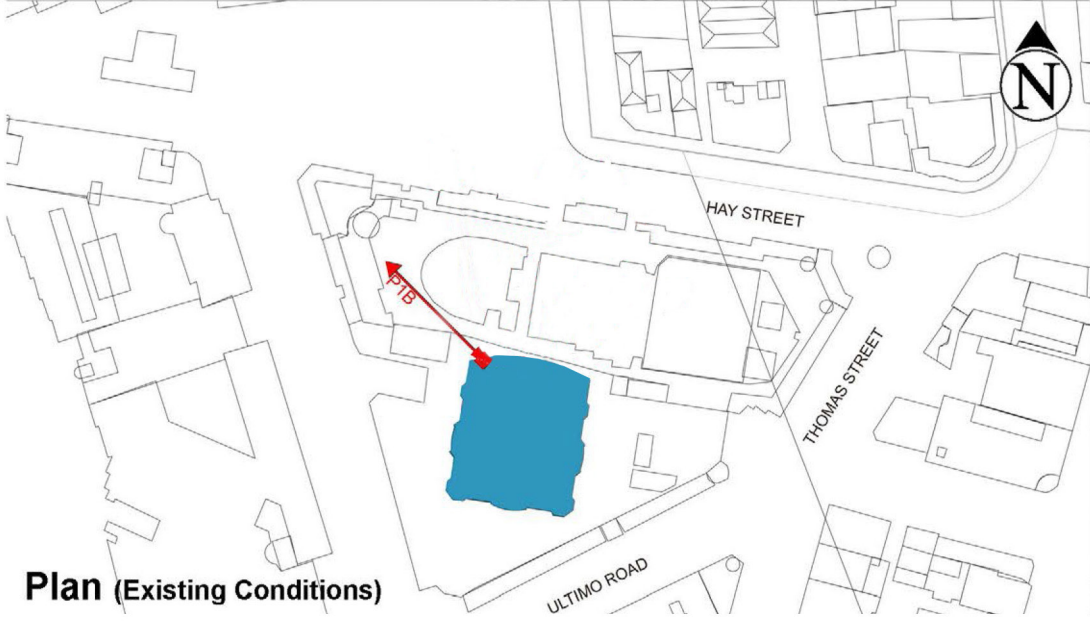
These images have been produced for view analysis purposes only.

Proposed outer parameters for built form ("parameter boxes") shown form part of State Significant Development Application SSD 5778-2013 (SSDA2 Concept Proposal for Darling Square) and do not form part of this development application.

Building forms shown include those approved which include State Significant Development Applications SSD 5752 (SSDA1 ICC Core Facilities), SSD 6010 (SSDA3 W2 Site - Student Accommodation), SSD 6011 (SSDA5 SW Plot Mixed Use), SSD 6116 (SSDA6 ICC Hotel) and SSD 6626 (SSDA7 NE Plot Mixed Use). Building forms currently under assessment are also shown and include SSD 6013 Mod 1 (SSDA4 NW Plot Mixed Use), SSD 6633 (SSDA9 SE Plot Mixed Use) and SSD 7021 (SSDA10 North Plot (Darling Exchange) and Square).

**LEGEND:** 6

- Key Building
- ← View Direction (50mm Camera)
- Parameter Boxes in the Haymarket Precinct



# Peak Apartments

Position: P1B

Level: 15

RL: 55.475 (Camera Height)

## FOR INFORMATION ONLY

These images have been produced for view analysis purposes only.

Proposed outer parameters for built form ("parameter boxes") shown form part of State Significant Development Application SSD 5778-2013 (SSDA2 Concept Proposal for Darling Square) and do not form part of this development application.

Building forms shown include those approved which include State Significant Development Applications SSD 5752 (SSDA1 ICC Core Facilities), SSD 6010 (SSDA3 W2 Site - Student Accommodation), SSD 6011 (SSDA5 SW Plot Mixed Use), SSD 6116 (SSDA6 ICC Hotel) and SSD 6626 (SSDA7 NE Plot Mixed Use). Building forms currently under assessment are also shown and include SSD 6013 Mod 1 (SSDA4 NW Plot Mixed Use), SSD 6633 (SSDA9 SE Plot Mixed Use) and SSD 7021 (SSDA10 North Plot (Darling Exchange) and Square.

**LEGEND:** 7

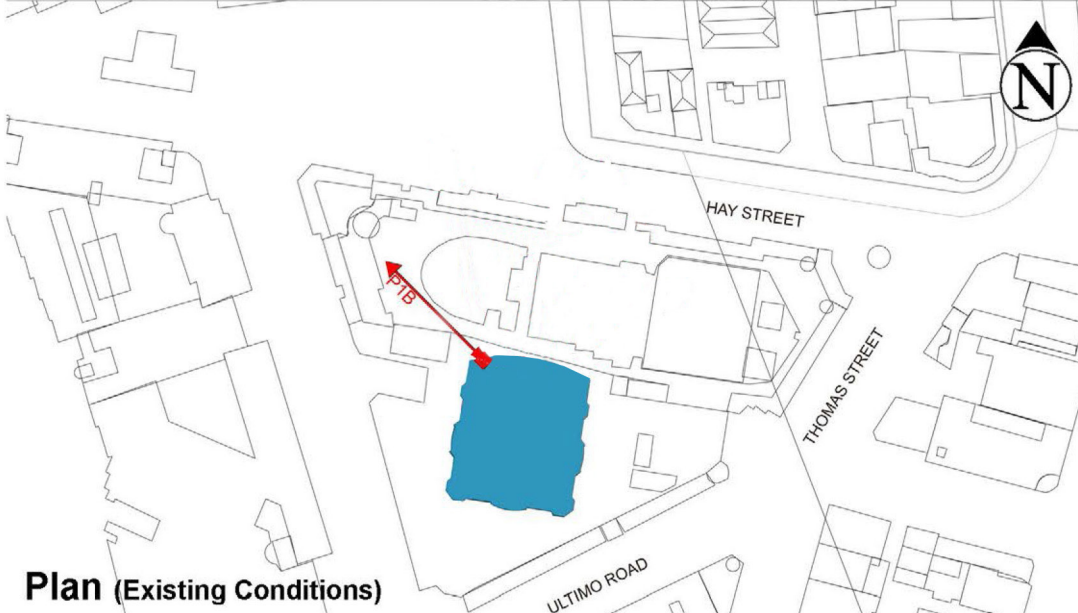
- Key Building
- ← View Direction (50mm Camera)
- Parameter Boxes in the Haymarket Precinct



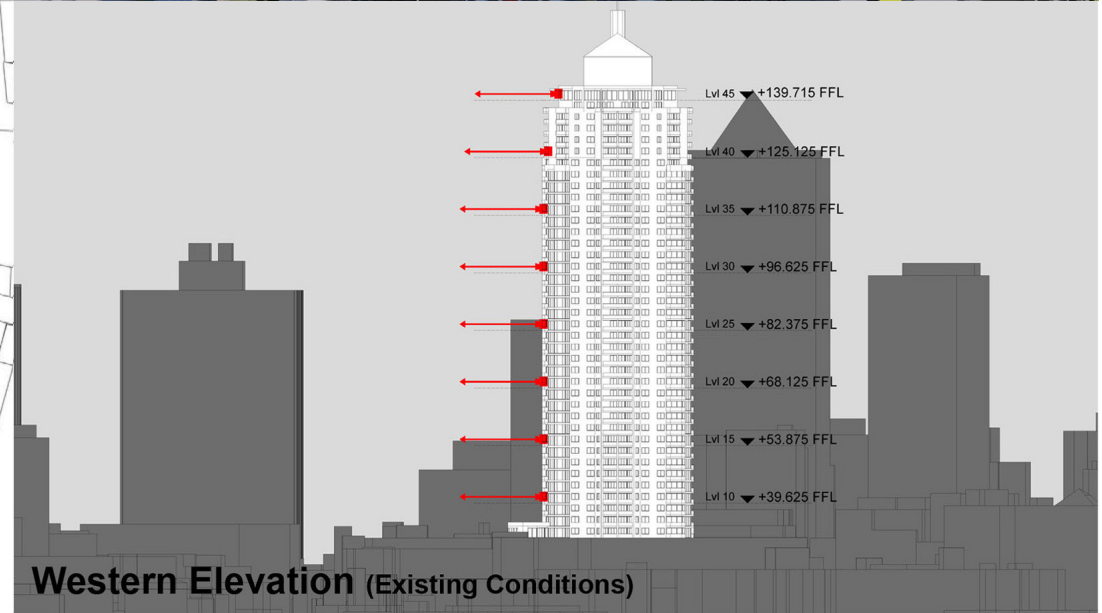
Existing View



Proposed View



Plan (Existing Conditions)



Western Elevation (Existing Conditions)

# Peak Apartments

Position: P1B

Level: 10

RL: 41.225 (Camera Height)

**FOR INFORMATION ONLY**

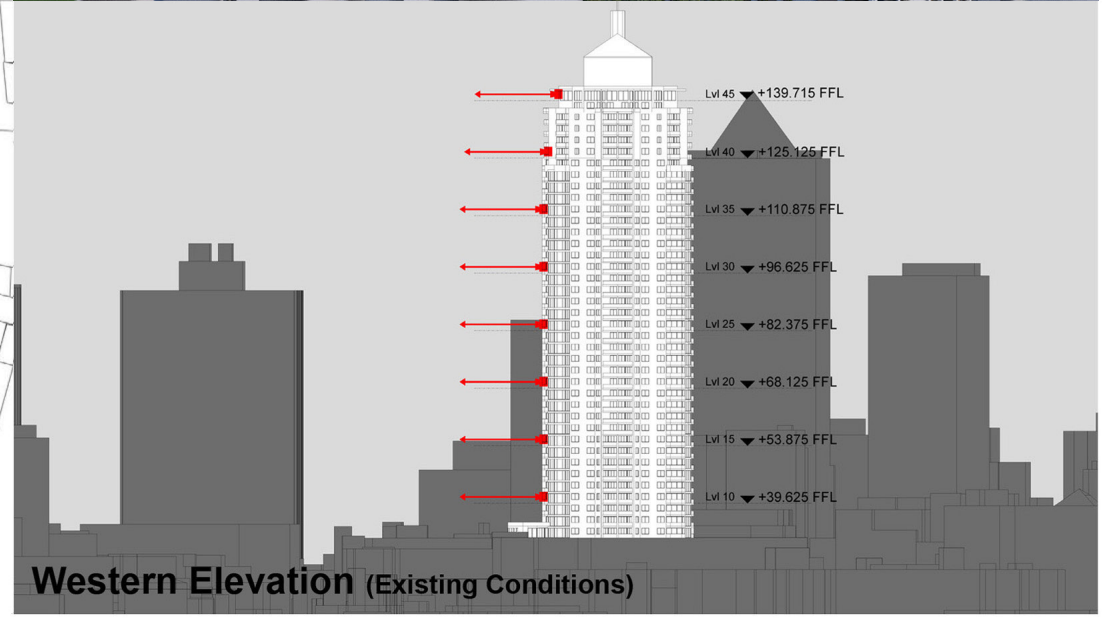
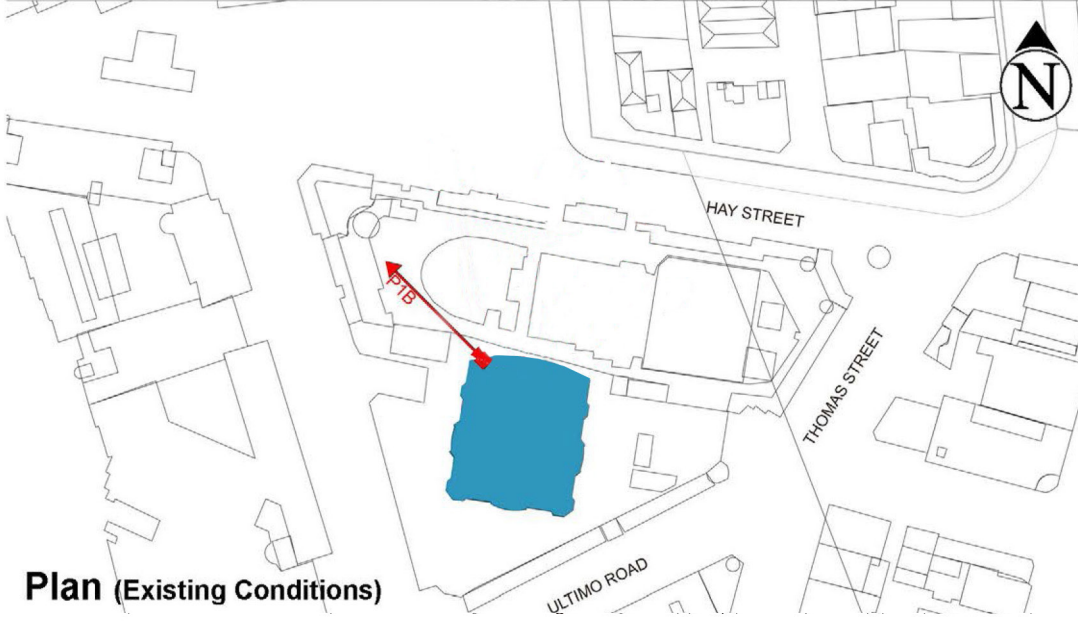
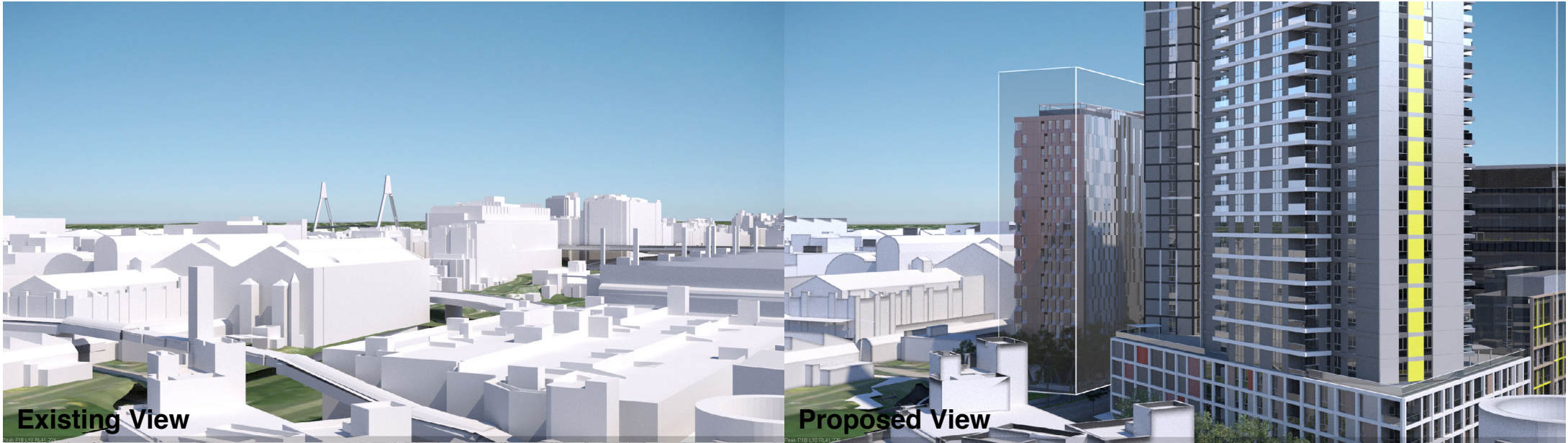
These images have been produced for view analysis purposes only.

Proposed outer parameters for built form ("parameter boxes") shown form part of State Significant Development Application SSD 5778-2013 (SSDA2 Concept Proposal for Darling Square) and do not form part of this development application.

Building forms shown include those approved which include State Significant Development Applications SSD 5752 (SSDA1 ICC Core Facilities), SSD 6010 (SSDA3 W2 Site - Student Accommodation), SSD 6011 (SSDA5 SW Plot Mixed Use), SSD 6116 (SSDA6 ICC Hotel) and SSD 6626 (SSDA7 NE Plot Mixed Use). Building forms currently under assessment are also shown and include SSD 6013 Mod 1 (SSDA4 NW Plot Mixed Use), SSD 6633 (SSDA9 SE Plot Mixed Use) and SSD 7021 (SSDA10 North Plot (Darling Exchange) and Square.

**LEGEND:** 8

- Key Building
- ← View Direction (50mm Camera)
- Parameter Boxes in the Haymarket Precinct



# Quay Street Apartments

Position: P1B

Level: 16

RL: 60.500 (Camera Height)

## FOR INFORMATION ONLY

These images have been produced for view analysis purposes only.

Proposed outer parameters for built form ("parameter boxes") shown form part of State Significant Development Application SSD 5778-2013 (SSDA2 Concept Proposal for Darling Square) and do not form part of this development application.

Building forms shown include those approved which include State Significant Development Applications SSD 5752 (SSDA1 ICC Core Facilities), SSD 6010 (SSDA3 W2 Site - Student Accommodation), SSD 6011 (SSDA5 SW Plot Mixed Use), SSD 6116 (SSDA6 ICC Hotel) and SSD 6626 (SSDA7 NE Plot Mixed Use). Building forms currently under assessment are also shown and include SSD 6013 Mod 1 (SSDA4 NW Plot Mixed Use), SSD 6633 (SSDA9 SE Plot Mixed Use) and SSD 7021 (SSDA10 North Plot (Darling Exchange) and Square).

**LEGEND:** 9

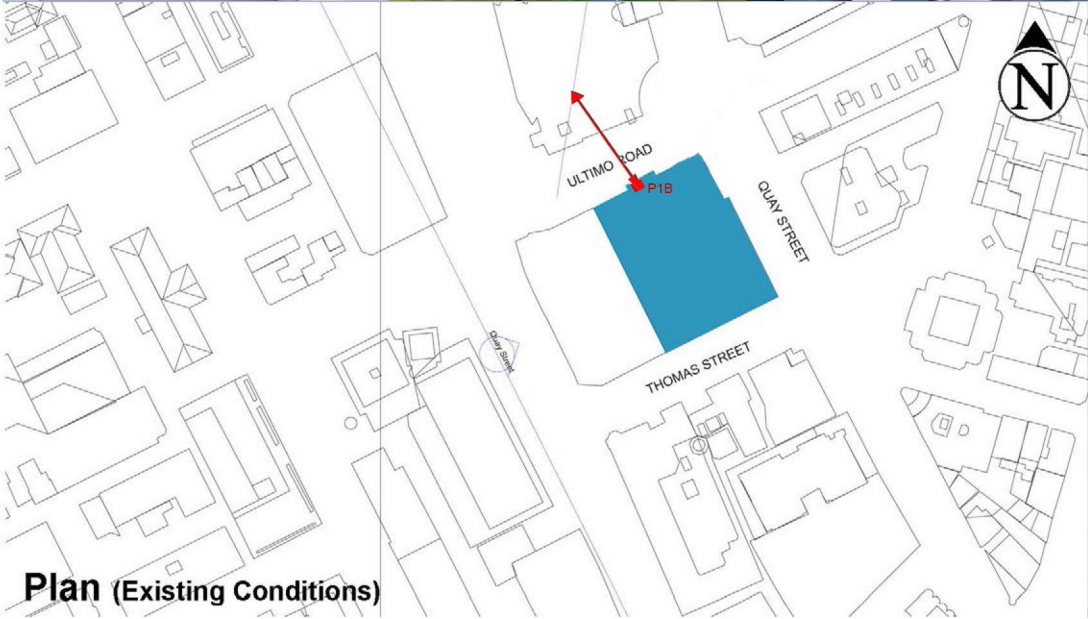
- Key Building
- View Direction (50mm Camera)
- Parameter Boxes in the Haymarket Precinct (Subject of this DA)



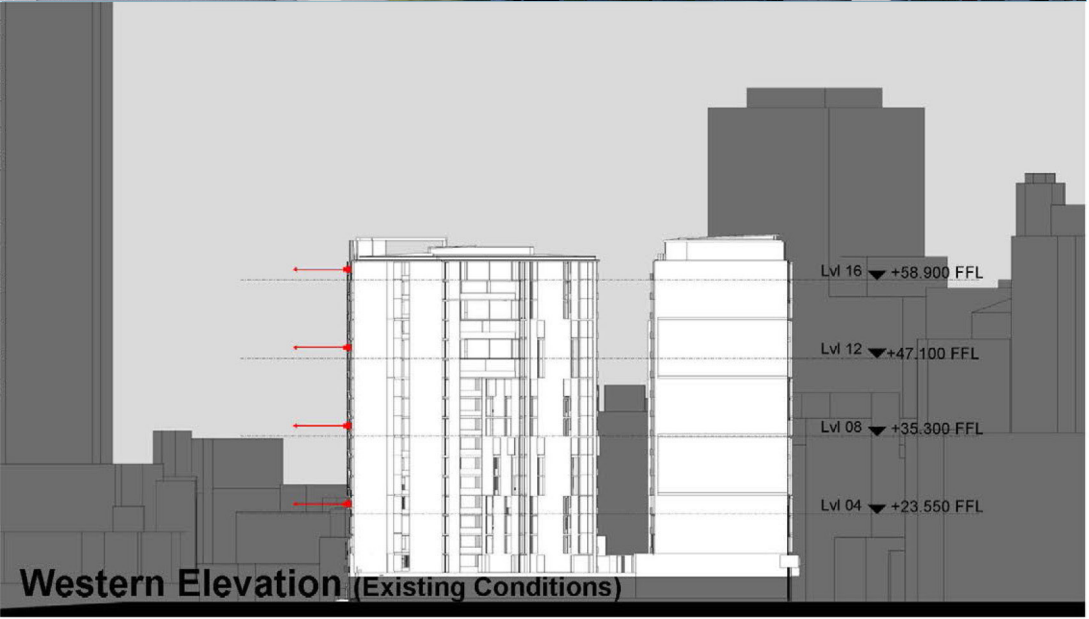
Existing View



Proposed View



Plan (Existing Conditions)



Western Elevation (Existing Conditions)