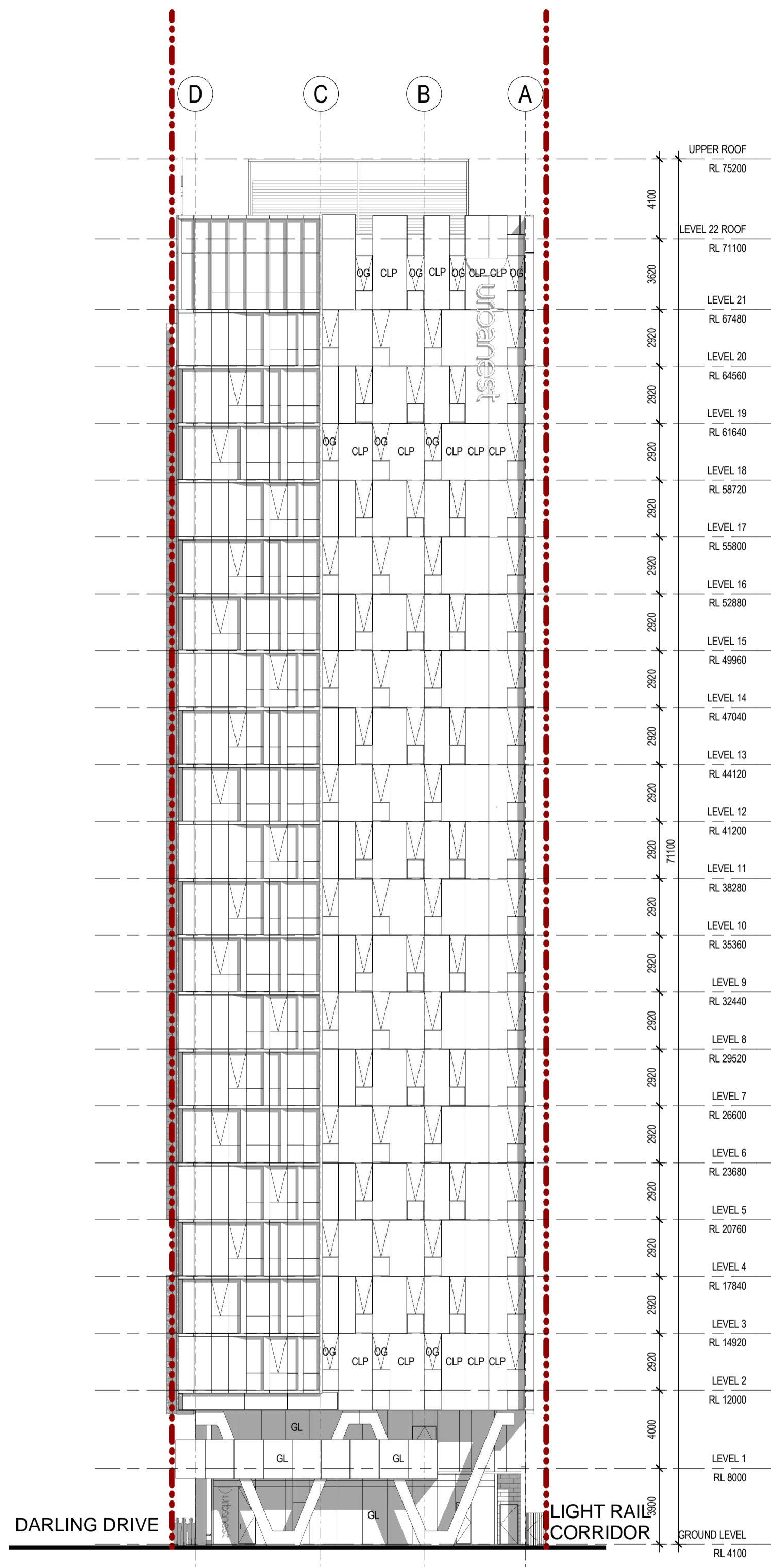
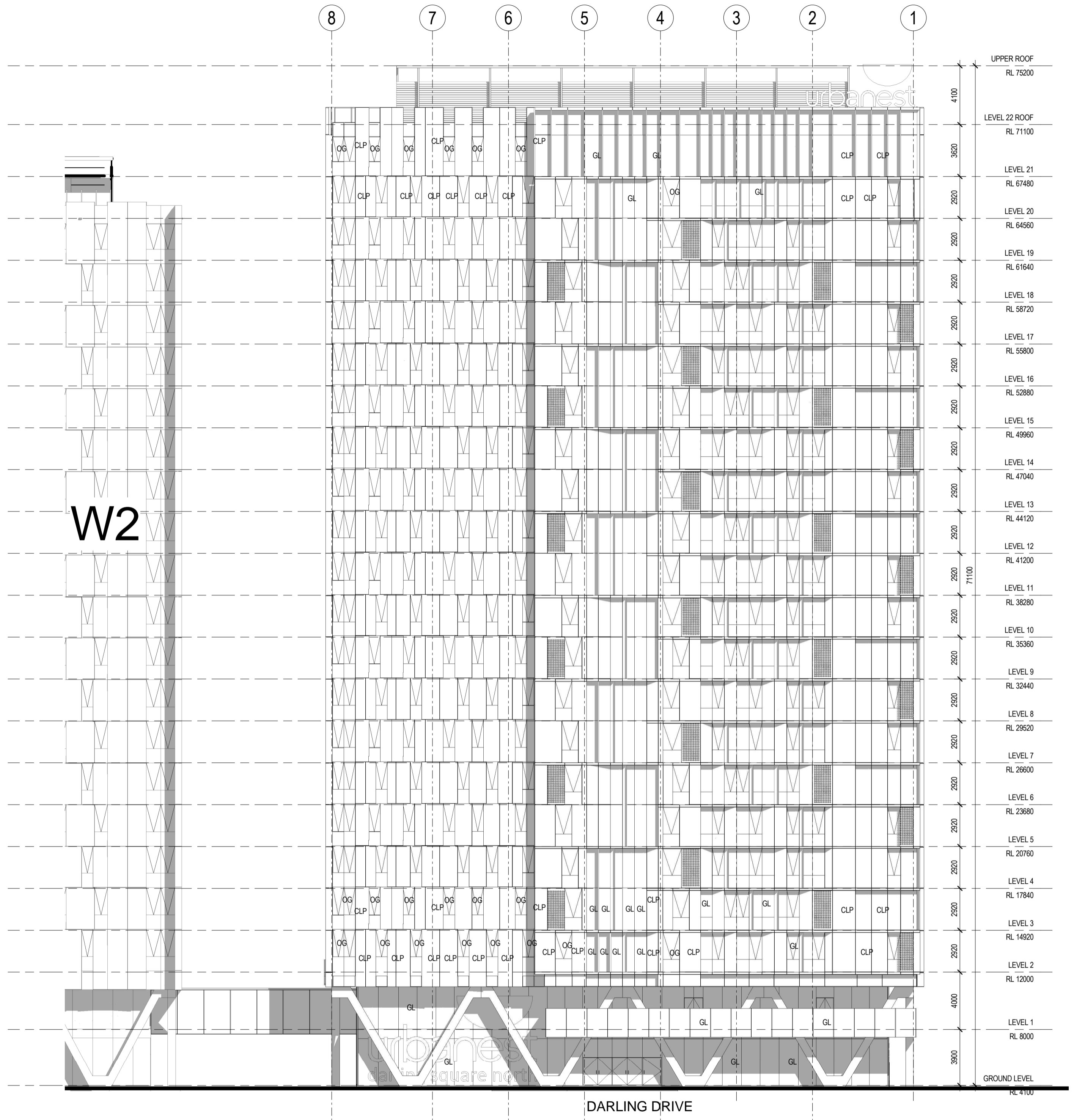


ABBREVIATIONS

- AWN - AWNING
- AW - ALUMINIUM WINDOW
- CONC - CONCRETE PAVING
- CRP - CEMENT RENDER AND PAINT
- CLP - CLADDING PANEL
- COMMS - COMMS CUPBOARD
- DP - DOWNPIPE
- ELECT - ELECTRICAL SWITCHBOARD
- EXG - EXISTING
- F - FIXED GLAZING
- FFL - FINISHED FLOOR LEVEL
- FGL - FINISHED GROUND LEVEL
- FSL - FINISHED STRUCTURAL LEVEL
- GE - GARBAGE EXHAUST RISER
- GL - GLAZING
- GR - GRAB RAIL
- H - HANDRAIL
- HR - HANDRAIL
- LV - LOUVRE
- LE - LAUNDRY EXHAUST RISER
- MV - MECHANICAL VENT
- OG - OPERABLE GLAZING
- P - PAINT (FINISH)
- PV - PAVING
- SP - SPANDREL PANEL
- SPR - STAIR PRESSURISATION RISER
- SWP - STORMWATER PIT
- TOW - TOP OF WALL
- WCE - TOILET EXHAUST RISER



1 NORTH ELEVATION 1:200



2 EAST ELEVATION 1:200



Revisions No.	Date	Description	Ver	App'd	Key
1	15.09.2015	DA Draft For Review		PY	
2	29.09.2015	DA Review		PY	
3	22.01.2016	Modified DA Issue		GM	

Client
Urbanest

Architect
AJ+C
ALLEN JACK+COTTER

79 Myrtle Street Chippendale NSW 2008 AUSTRALIA
ph +61 2 9311 8222 fx +61 2 9311 8200
ABN 53 003 782 250

Project
BUILDING W1
STUDENT ACCOMMODATION

DARLING DRIVE, DARLING
SQUARE, SYDNEY, NSW

Proj. No. 15028

Drawing Title
NORTH & EAST ELEVATIONS

Scale
As indicated @A1

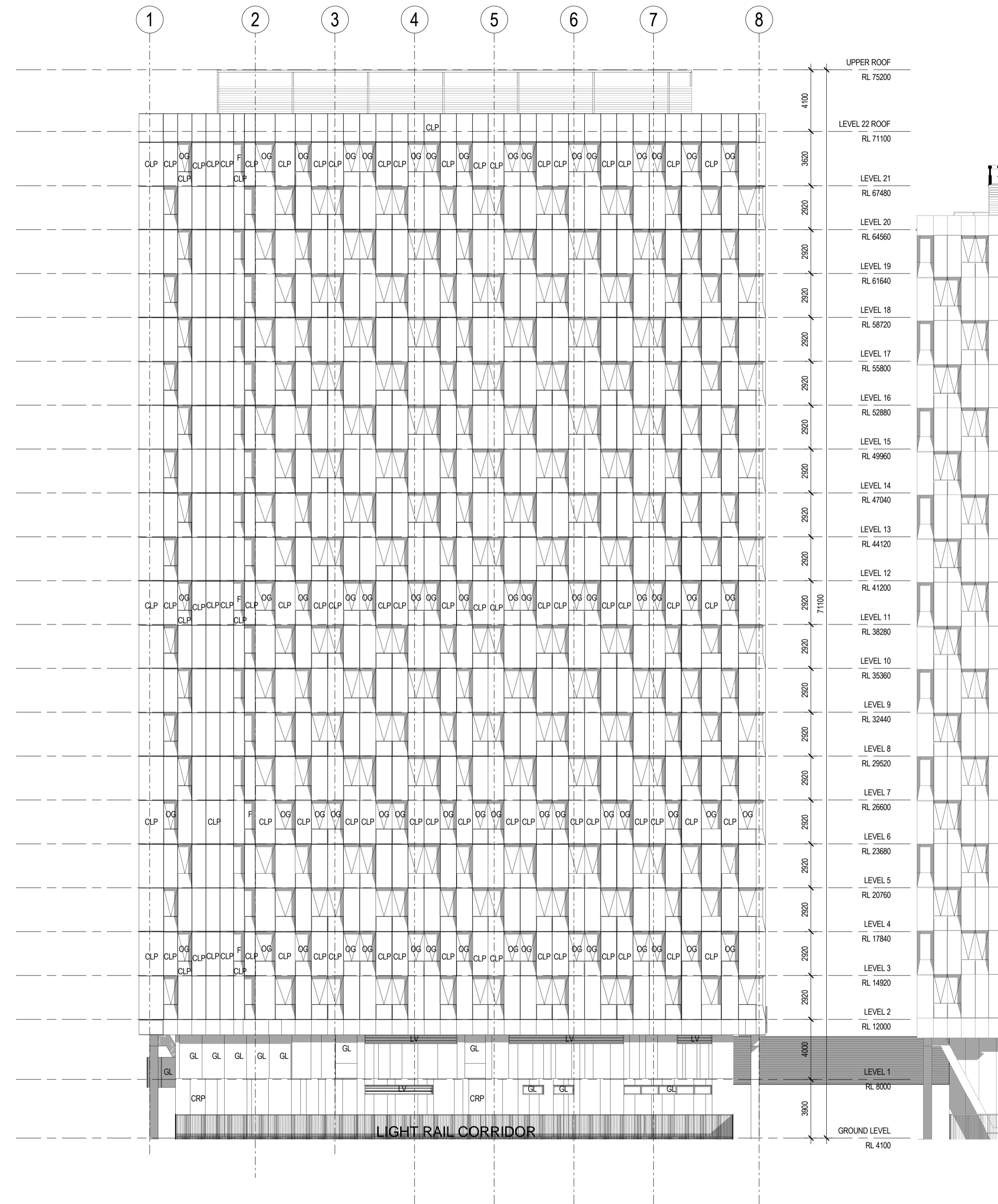
Drawing No.
DA3100

Issue
3

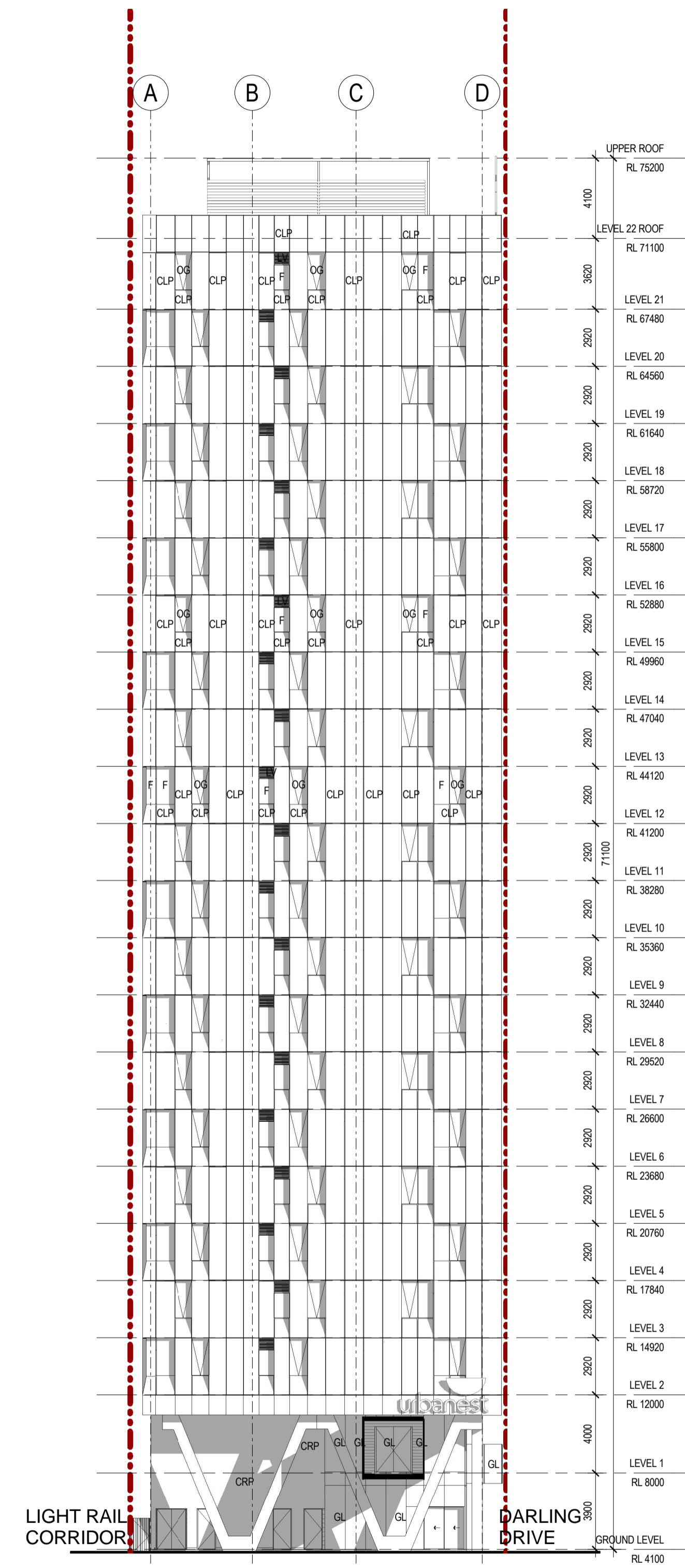
Sheet Status
NOT FOR CONSTRUCTION

ABBREVIATIONS

- AWN - AWNING
- AW - ALUMINIUM WINDOW
- CONC - CONCRETE PAVING
- CRP - CEMENT RENDER AND PAINT
- CLP - CLADDING PANEL
- COMMS - COMMS CUPBOARD
- DP - DOWNPIPE
- ELECT - ELECTRICAL SWITCHBOARD
- EXG - EXISTING
- F - FIXED GLAZING
- FLL - FINISHED FLOOR LEVEL
- FGL - FINISHED GROUND LEVEL
- FSL - FINISHED STRUCTURAL LEVEL
- GE - GARBAGE EXHAUST RISER
- GL - GLAZING
- GR - GRAB RAIL
- H - HYDRANT
- HR - HANDRAIL
- LV - LOUVRE
- LE - LAUNDRY EXHAUST RISER
- ME - MECHANICAL VENT
- MV - MECHANICAL VENT
- OG - OPERABLE GLAZING
- P - PAINT (FINISH)
- PV - PAVING
- SP - SPANDREL PANEL
- SPR - STAIR PRESSURISATION RISER
- SWP - STORMWATER PIT
- TOW - TOP OF WALL
- WCE - TOILET EXHAUST RISER



1 WEST ELEVATION 1:200



2 SOUTH ELEVATION 1:200



Revisions No.	Date	Description
1	15.09.2015	DA Draft For Review
2	29.09.2015	DA Review
3	22.01.2016	Modified DA Issue

Ver

App'd

Key

Client
Urbanest



Architect



79 Myrtle Street Chippendale NSW 2008 AUSTRALIA
ph +61 2 9311 8222 fx +61 2 9311 8200
ABN 53 003 782 250

Project

BUILDING W1
STUDENT ACCOMMODATION
DARLING DRIVE, DARLING
SQUARE, SYDNEY, NSW

Proj. No. 15028

Drawing Title

WEST & SOUTH ELEVATIONS

Sheet Status

NOT FOR CONSTRUCTION

Scale

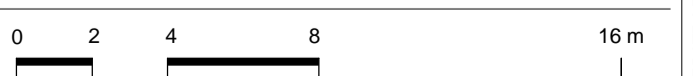
As indicated @A1

Drawing No.

DA3101

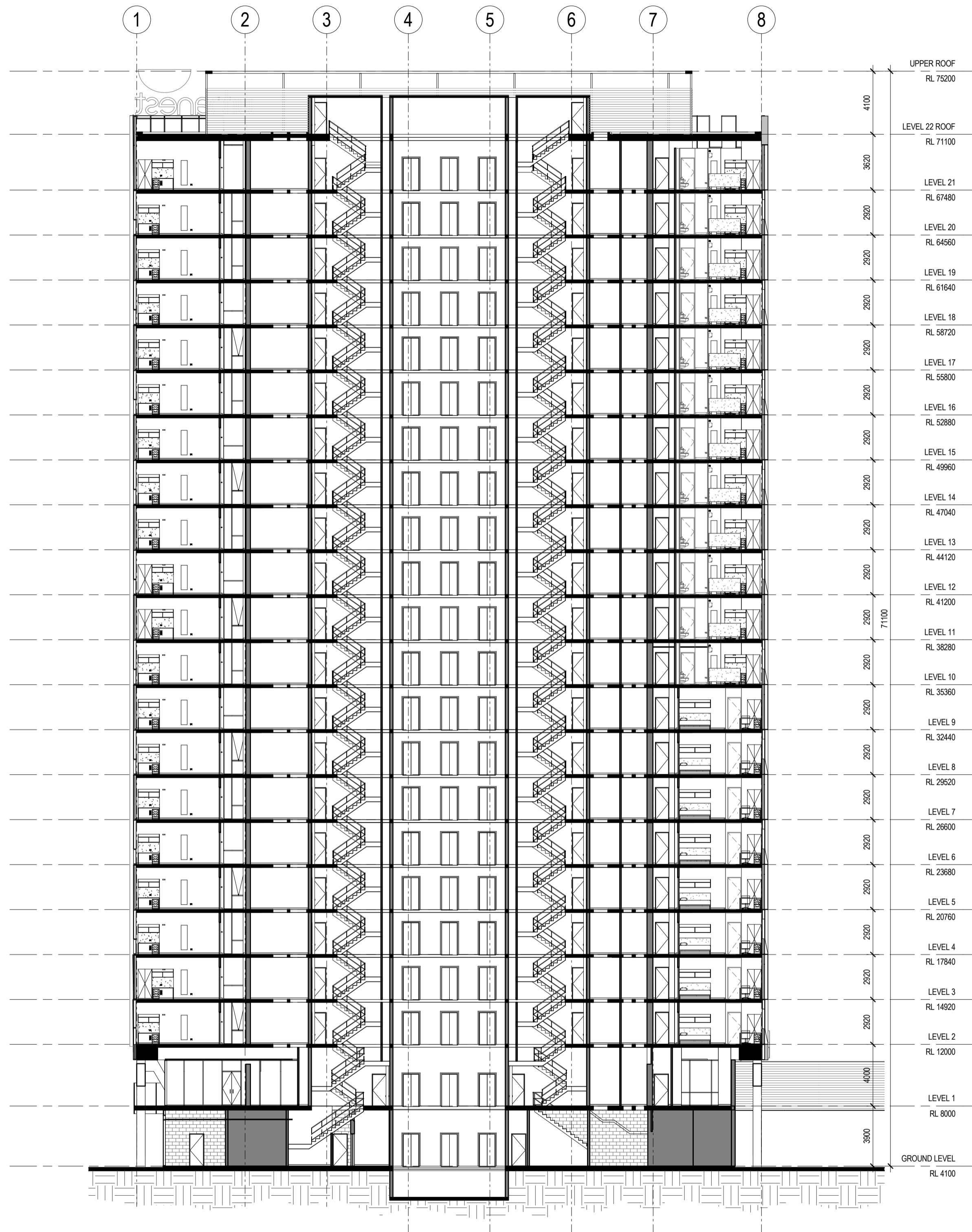
Issue

3

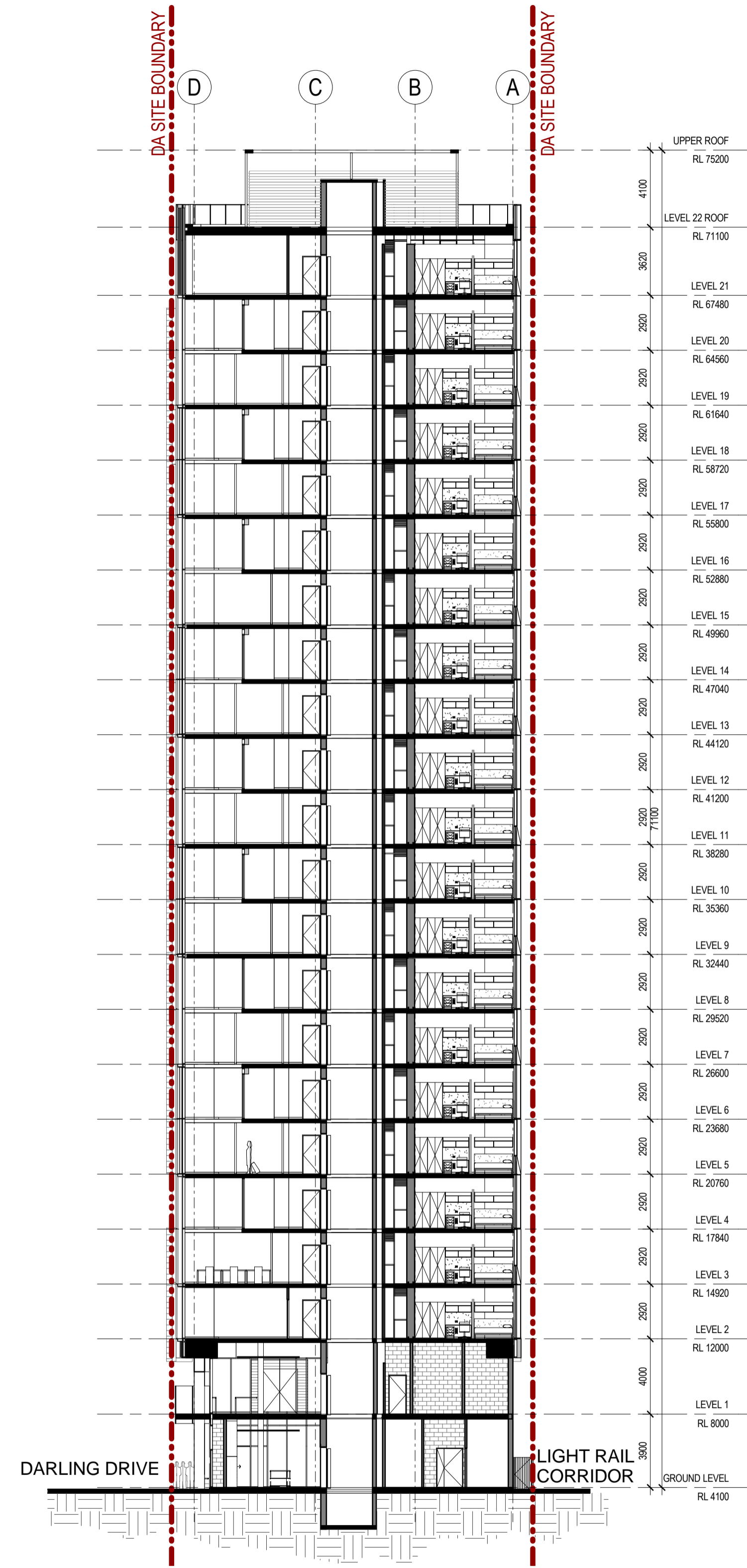


ABBREVIATIONS

- AWN - AWNING
- AW - ALUMINIUM WINDOW
- CONC - CONCRETE PAVING
- CRP - CEMENT RENDER AND PAINT
- CLP - CLADDING PANEL
- COMMS - COMMS CUPBOARD
- DP - DOWNPIPE
- ELECT - ELECTRICAL SWITCHBOARD
- EXG - EXISTING
- F - FIXED GLAZING
- FFL - FINISHED FLOOR LEVEL
- FGL - FINISHED GROUND LEVEL
- FSL - FINISHED STRUCTURAL LEVEL
- GE - GARBAGE EXHAUST RISER
- GL - GLAZING
- GR - GRAB RAIL
- H - HYDRANT
- HR - HANDRAIL
- LV - LOUVRE
- LE - LAUNDRY EXHAUST RISER
- MV - MECHANICAL VENT
- OG - OPERABLE GLAZING
- P - PAINT (FINISH)
- PV - PAVING
- SP - SPANDREL PANEL
- SPR - STAIR PRESSURISATION RISER
- SWP - STORMWATER PIT
- TOW - TOP OF WALL
- WCE - TOILET EXHAUST RISER



1 SECTION 01
1/A2100 1:200



2 SECTION 02
1:200



Revisions No.	Date	Description
1	15.09.2015	DA Draft For Review
2	29.09.2015	DA Review

Ver	App'd	Key
PY		

Client
Urbanest



Architect



79 Myrtle Street Chippendale NSW 2008 AUSTRALIA
ph +61 2 9311 8222 fx +61 2 9311 8200
ABN 53 003 782 250

Project

BUILDING W1
STUDENT ACCOMMODATION
DARLING DRIVE, DARLING
SQUARE, SYDNEY, NSW

Proj. No. 15028

Drawing Title

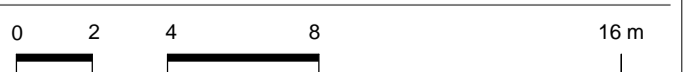
SECTIONS

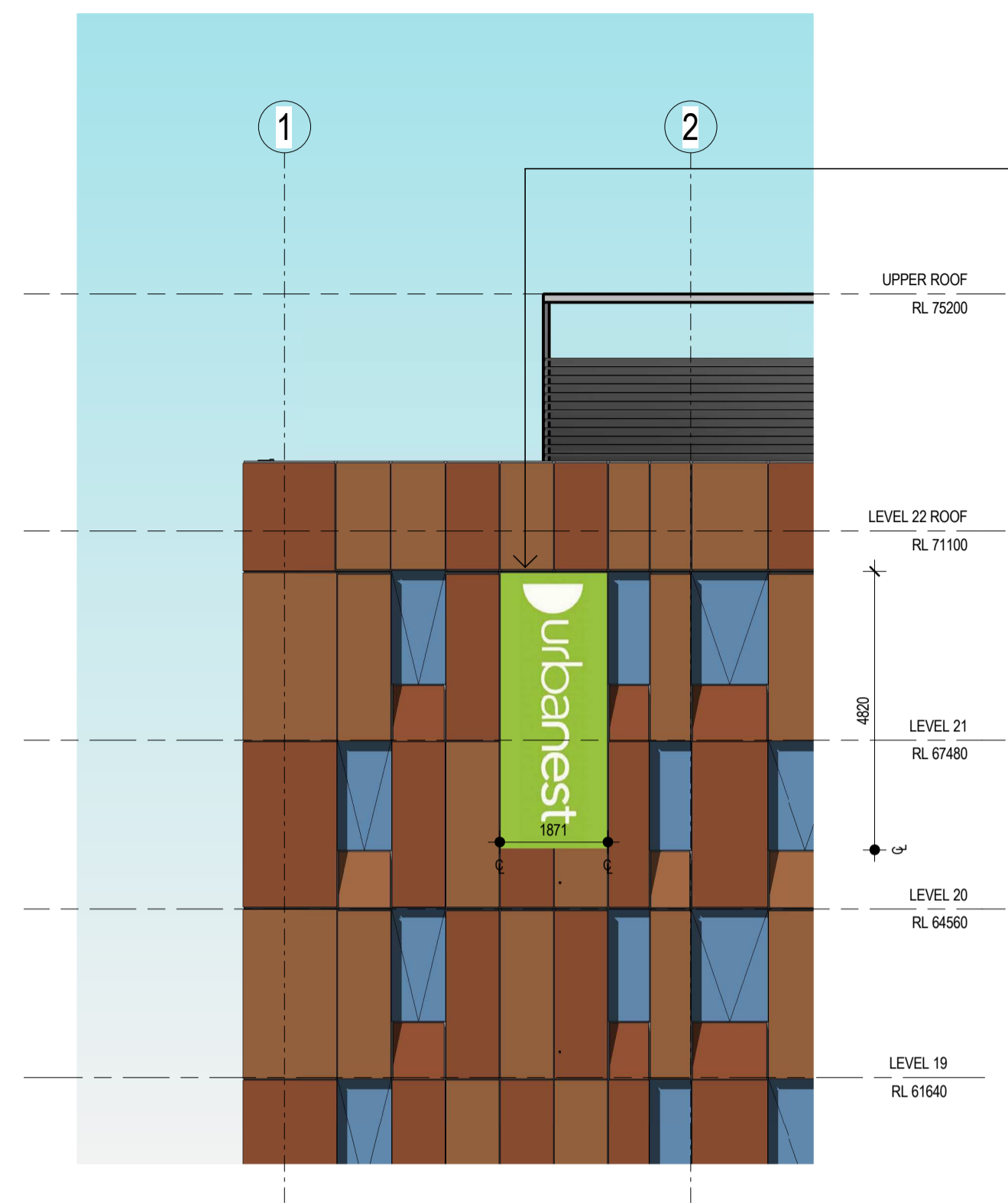
Sheet Status

NOT FOR CONSTRUCTION

Scale Drawing No. Issue

As indicated @A1 DA3200 2

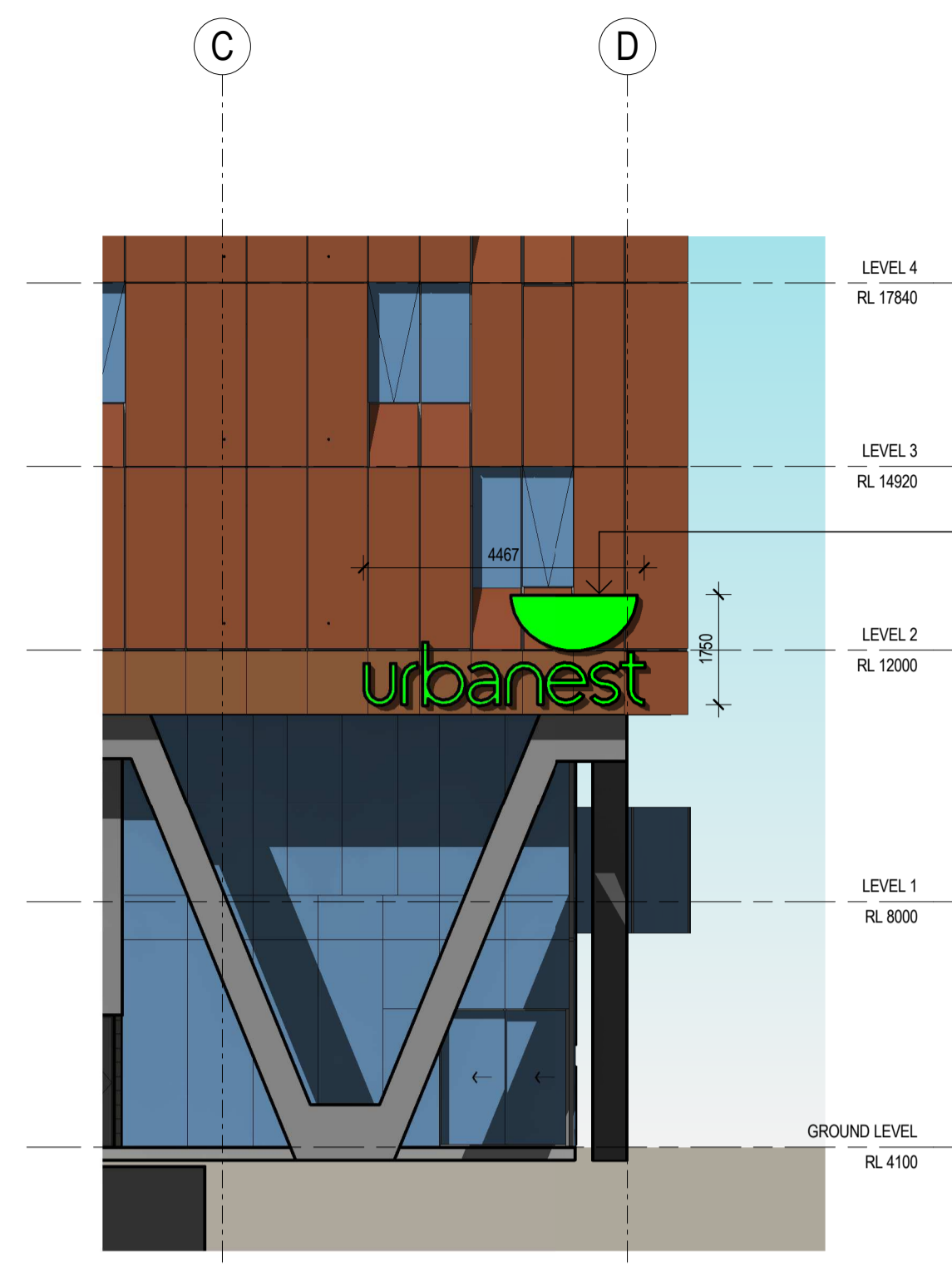




SIGN TYPE 1
ILLUMINATED BOX WITH SIGNAGE TO HIGH LEVEL

- ILLUMINATED SIGNAGE BOX WITH WHITE LETTERING ON GREEN BACKGROUND.
- INTEGRATED WITH FACADE PANEL MODULES
- TOP ALIGN WITH TOP OF ADJACENT WINDOWS/ PANELS.
- BOTTOM TO ALIGN WITH BOTTOM OF ADJACENT WINDOWS/ PANELS ON LEVEL BELOW.
- PROVIDE SOLID SURROUND FRAME TO SIDES TO PREVENT LIGHT SPILL BACK INTO WINDOWS.
- POWER SUPPLY REQUIRED.

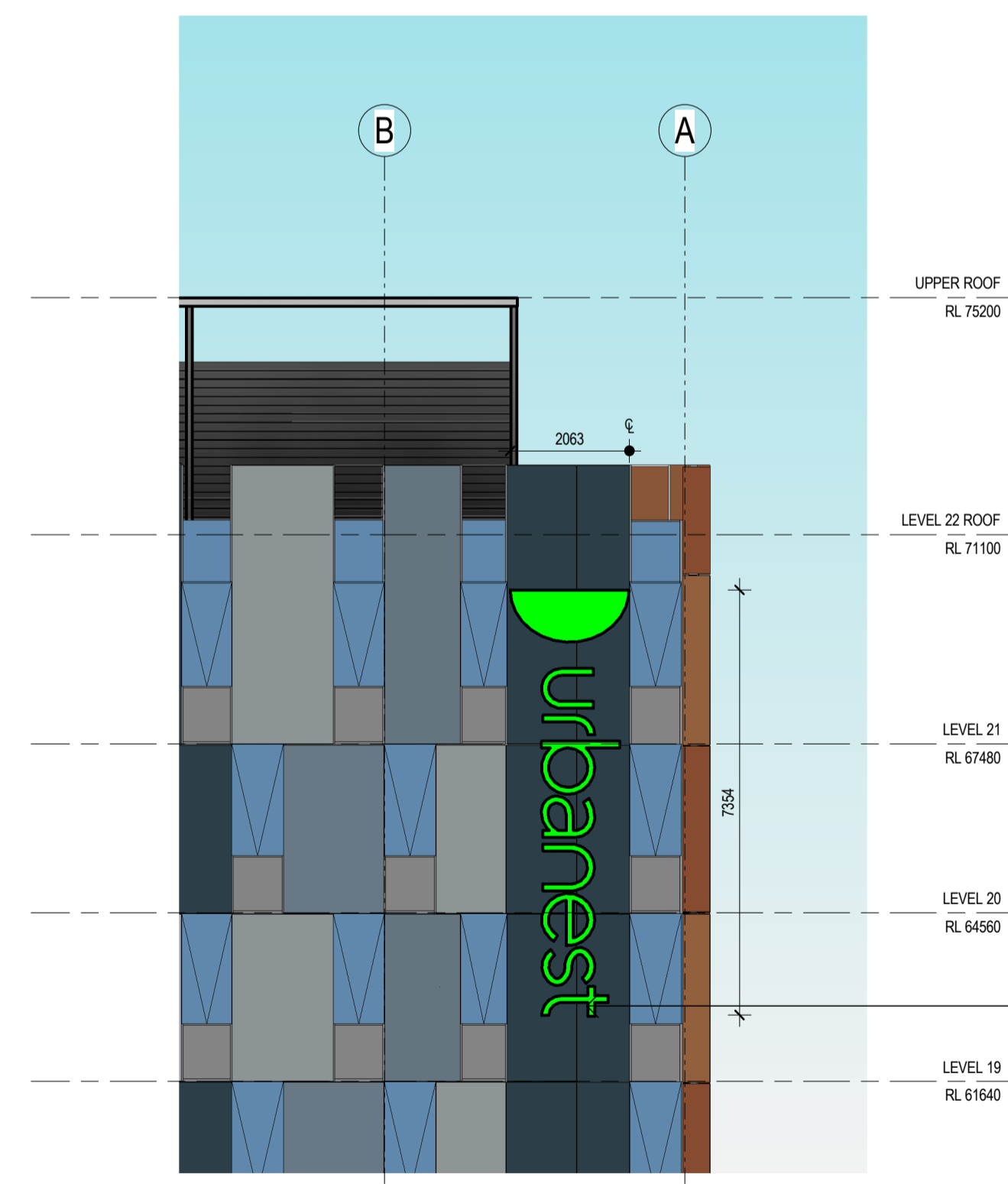
3 SIGNAGE - NORTH WEST - HIGH
1:100



SIGN TYPE 2
ILLUMINATED SIGN TO LOW LEVEL

- INDIVIDUAL FABRICATED POWDERCOATED METAL LETTERS WITH NEON INFILL/ ILLUMINATED FACE PANELS.
- LETTERS TO BE PIN FIXED TO FACADE PANELS IN LOCATIONS NOMINATED.
- PROVIDE SOLID SIDES TO PREVENT LIGHT SPILL BACK INTO WINDOWS.
- POWER SUPPLY REQUIRED.

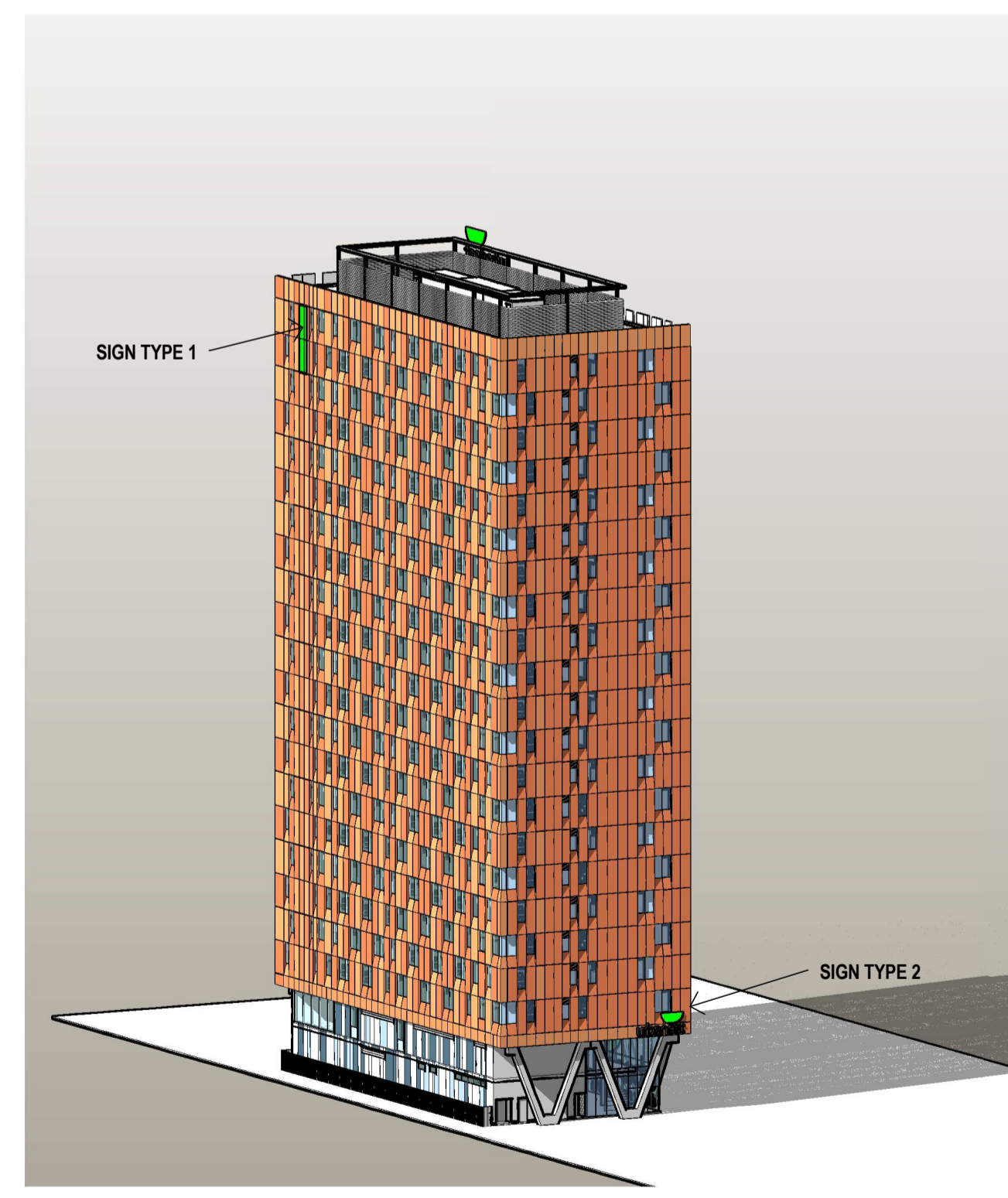
5 SIGNAGE - SOUTH EAST - GROUND
1:100



SIGN TYPE 3
ILLUMINATED SIGN TO HIGH LEVEL

- INDIVIDUAL FABRICATED POWDERCOATED METAL LETTERS WITH NEON INFILL/ ILLUMINATED FACE PANELS.
- LETTERS TO BE PIN FIXED TO FACADE PANELS IN LOCATIONS NOMINATED.
- PROVIDE SOLID SIDES TO PREVENT LIGHT SPILL BACK INTO WINDOWS.
- POWER SUPPLY REQUIRED.

1 SIGNAGE - NORTH WEST CORNER - HIGH
1:100



6 SIGNAGE AERIAL - SOUTH WEST VIEW



Revisions No.	Date	Description
1	15.09.2015	DA Draft For Review
2	29.09.2015	DA Review
3	22.01.2016	Modified DA Issue

Ver	App'd	Key
PY		
PY		
GM		

Client
Urbanest



Architect



79 Myrtle Street Chippendale NSW 2008 AUSTRALIA
ph +61 2 9311 8222 fx +61 2 9311 8200
ABN 53 003 782 250

Project

BUILDING W1
STUDENT ACCOMMODATION
DARLING DRIVE, DARLING
SQUARE, SYDNEY, NSW

Proj. No. 15028

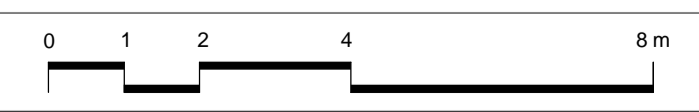
Drawing Title
SIGNAGE

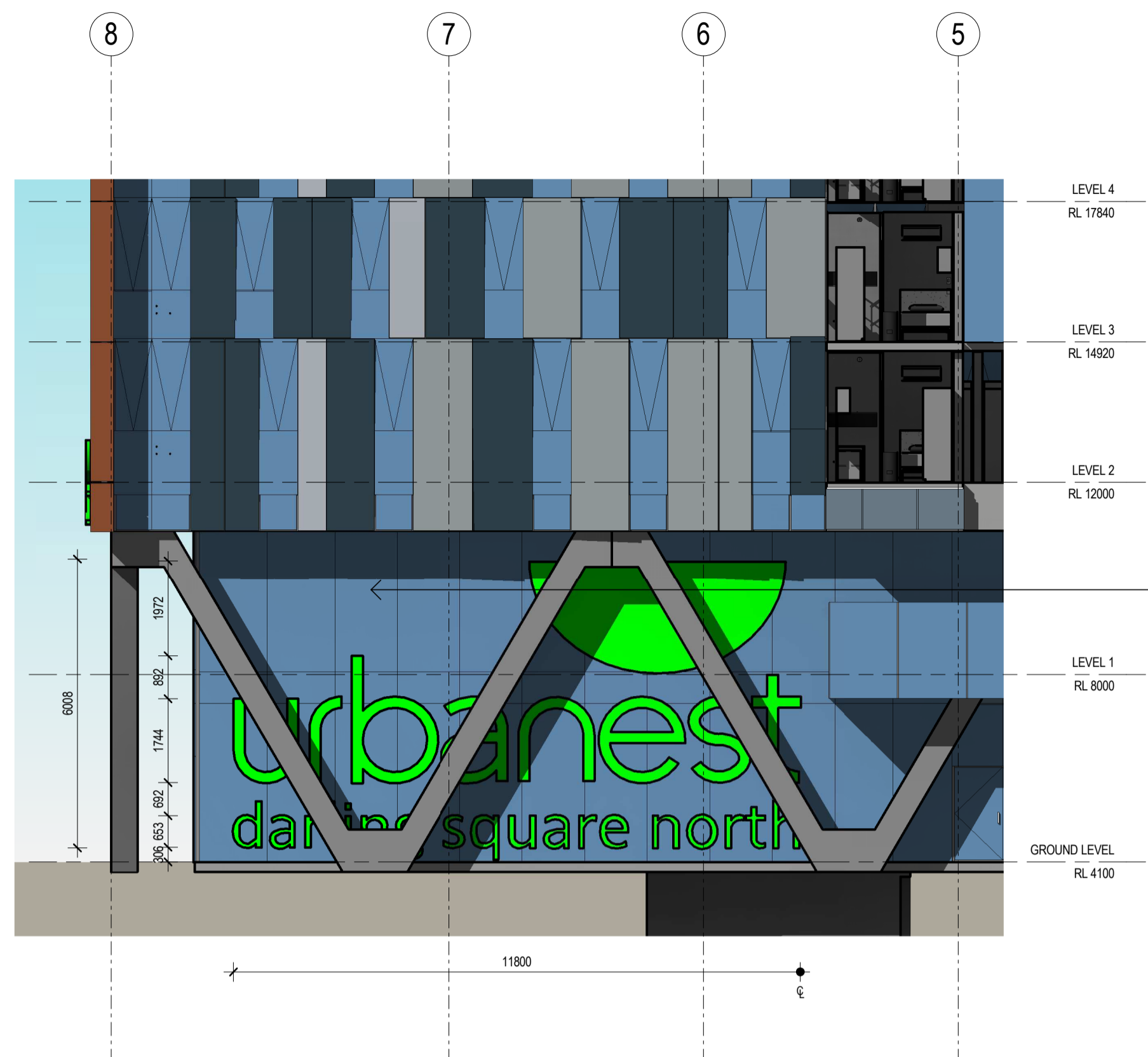
Sheet Status
NOT FOR CONSTRUCTION

Scale
1:100 @A1

Drawing No.
DA3301

Issue
3

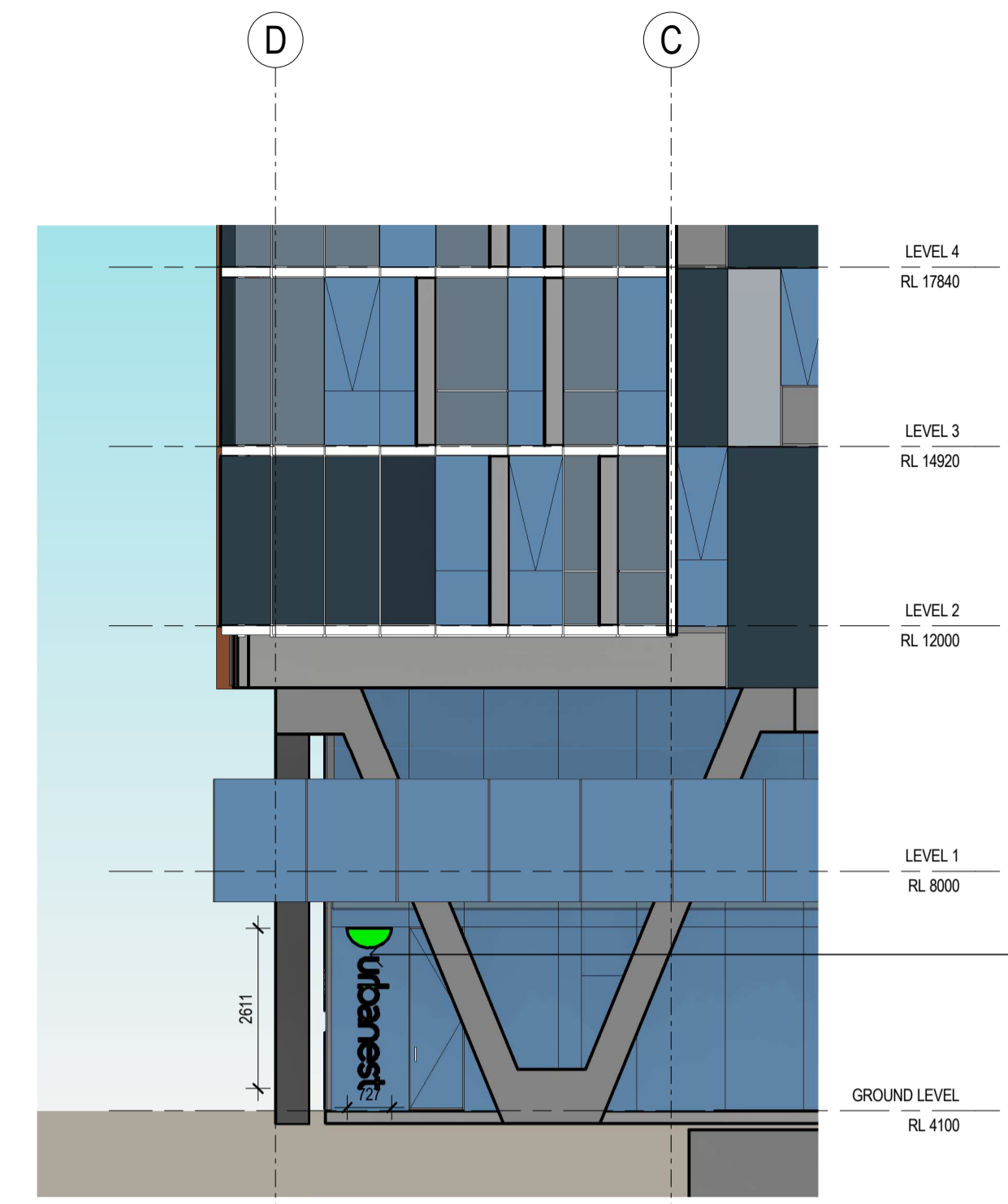




SIGN TYPE 4
SUPERGRAPHIC FILM ON GLAZING

- URBANEST SUPERGRAPHIC GREEN LOGO AND BUILDING NAME IN GREEN COLOUR TRANSLUCENT APPLIED FILM TO GLAZING.
- PROVIDES A CONTEMPORARY GRAPHIC SOLUTION AND STREET ADDRESS, VISIBLE FROM OBLIQUE ANGLES.

TEXT:
urbanest
darling square north (TBC)

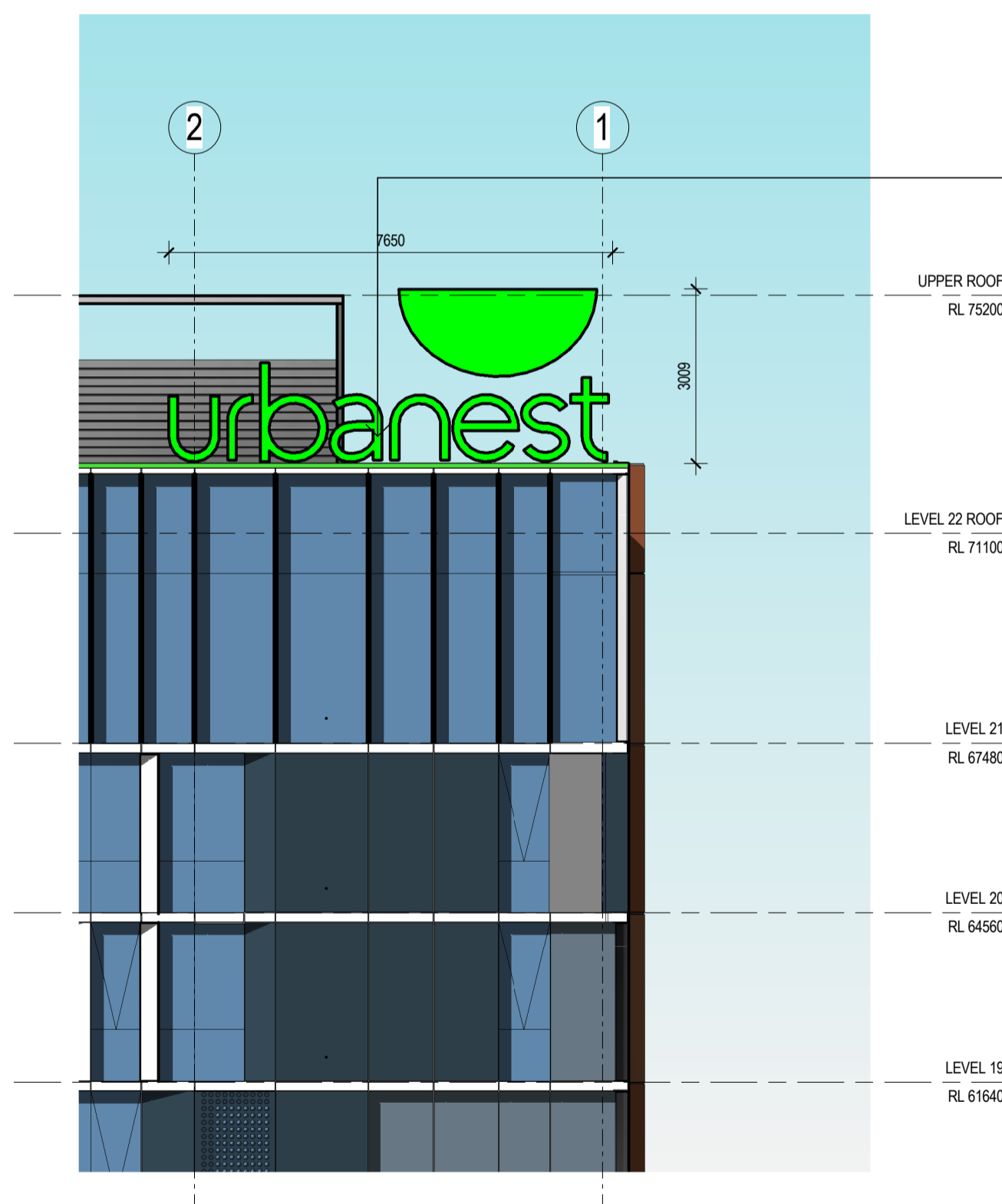


SIGN TYPE 6
FILM ON GLAZING

- URBANEST VERTICAL GREEN LOGO APPLIED FILM TO GLAZING.
- ALIGN TOP OF LOGO TO GLAZING MULLION
- CENTERED ON GLAZING PANEL

1 SIGNAGE - EASTERN ELEVATION - GROUND
1:100

2 SIGNAGE - NORTH EAST CORNER - GROUND
1:100



SIGN TYPE 5
ILLUMINATED SIGN TO NORTH HIGH LEVEL INCL. HORIZONTAL LINEAR LED TO CORNER BUILDING FORM

- INDIVIDUAL FABRICATED POWDERCOATED METAL LETTERS WITH NEON INFILL/ ILLUMINATED FACE PANELS.
- LETTERS TO BE PIN FIXED TO FACADE PANELS IN LOCATIONS NOMINATED.
- PROVIDE SOLID SIDES TO PREVENT LIGHT SPILL BACK INTO WINDOWS.
- POWER SUPPLY REQUIRED.
- SIGN SUPPORTED ON CONCEALED STEEL FRAME.



3D VIEW - NORTH EAST CORNER

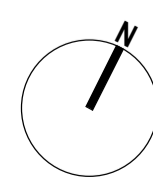


3 SIGNAGE AERIAL - NORTH EASTERN FACADE

4 SIGNAGE - EASTERN ELEVATION - HIGH
1:100



Revisions No.	Date	Description	Ver	App'd	Key
1	22/01/2016	Modified DA Issue		GM	



Client
Urbanest



Architect



79 Myrtle Street Chippendale NSW 2008 AUSTRALIA
ph +61 2 9311 8222 fx +61 2 9311 8200
ABN 53 003 782 250

Project

BUILDING W1
STUDENT ACCOMMODATION
DARLING DRIVE, DARLING
SQUARE, SYDNEY, NSW

Proj. No. 15028

Drawing Title

SIGNAGE 2

Sheet Status

NOT FOR CONSTRUCTION

Scale

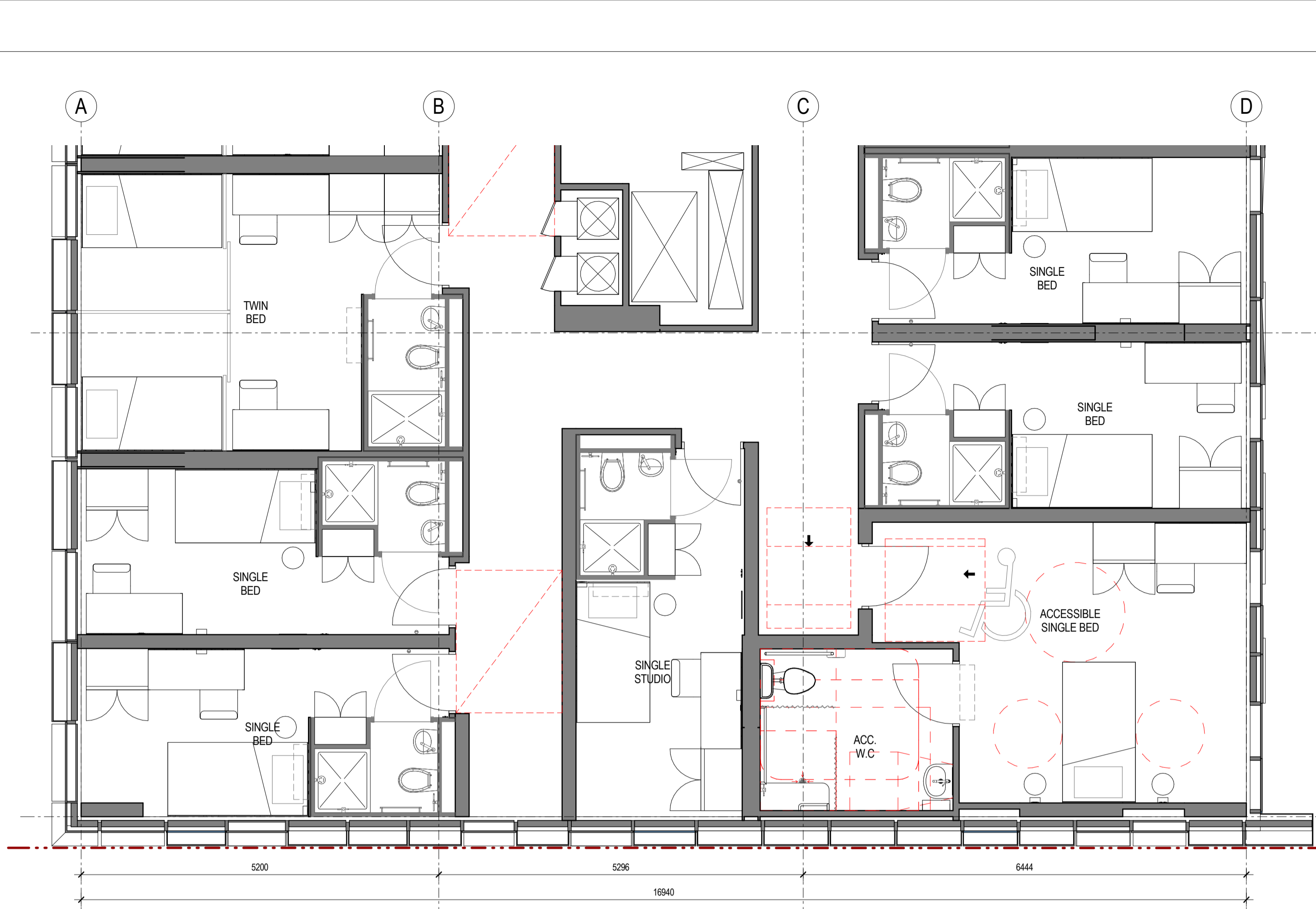
1 : 100 @ A1

Drawing No.

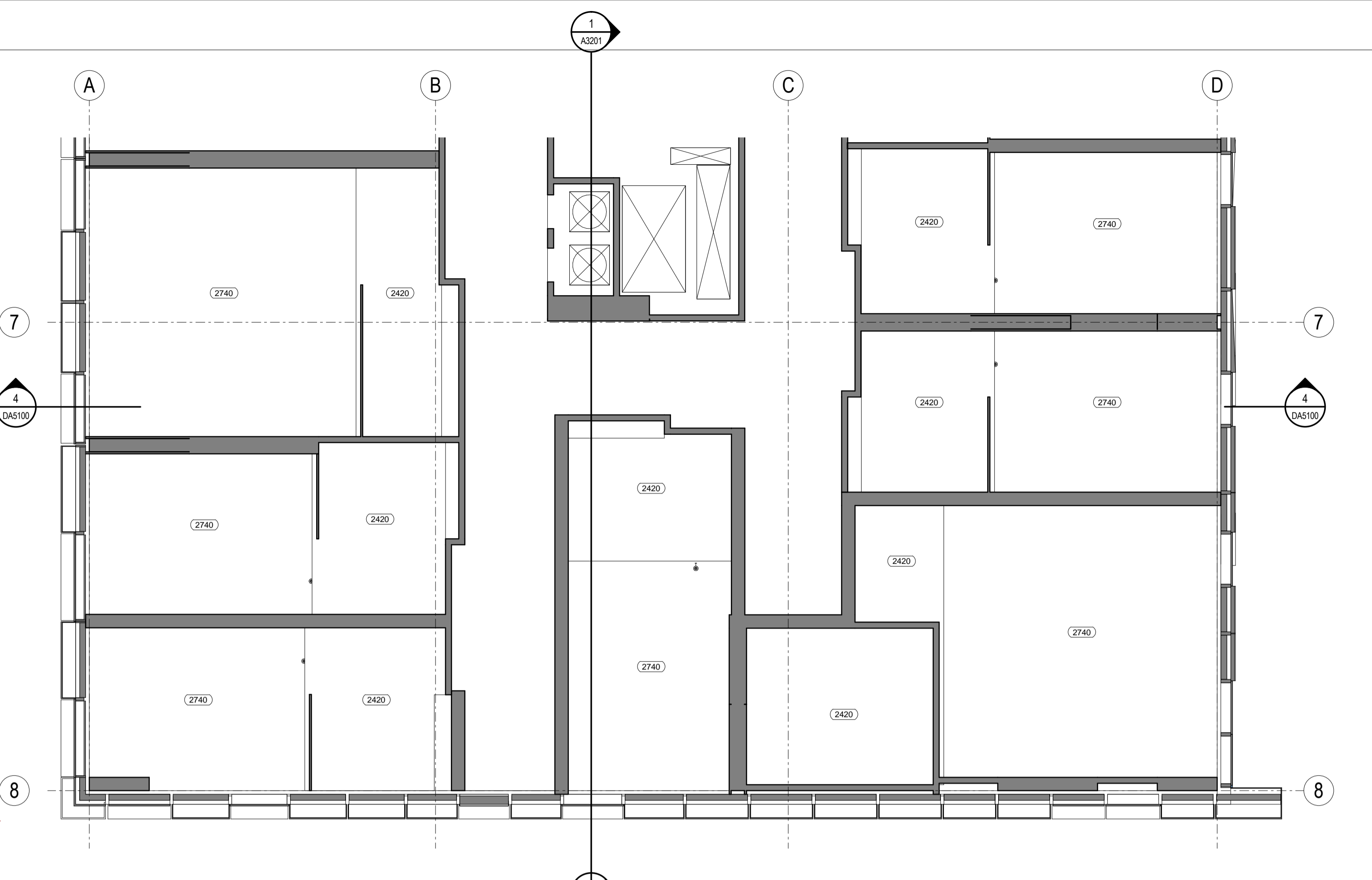
DA3302

Issue

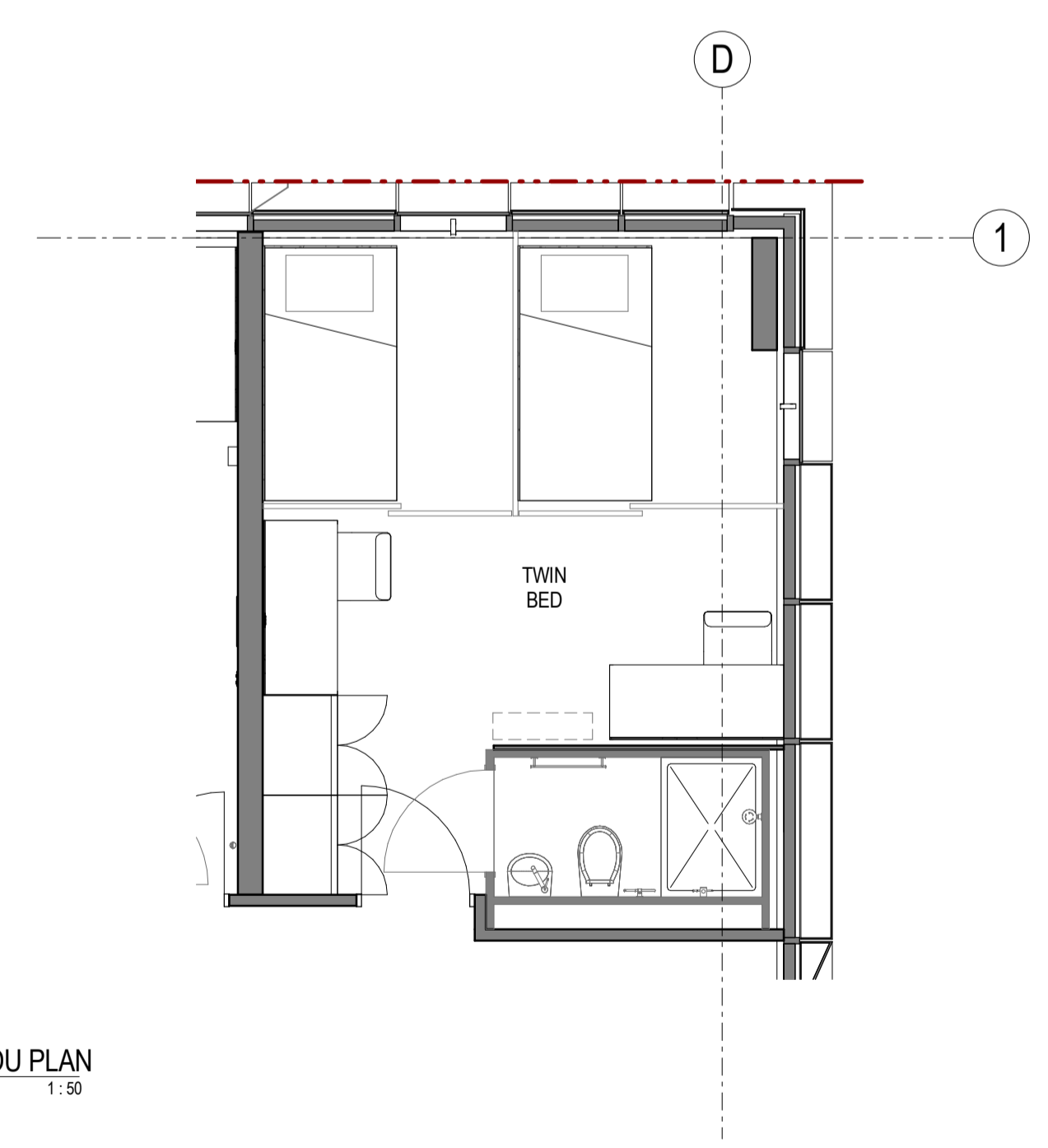
1



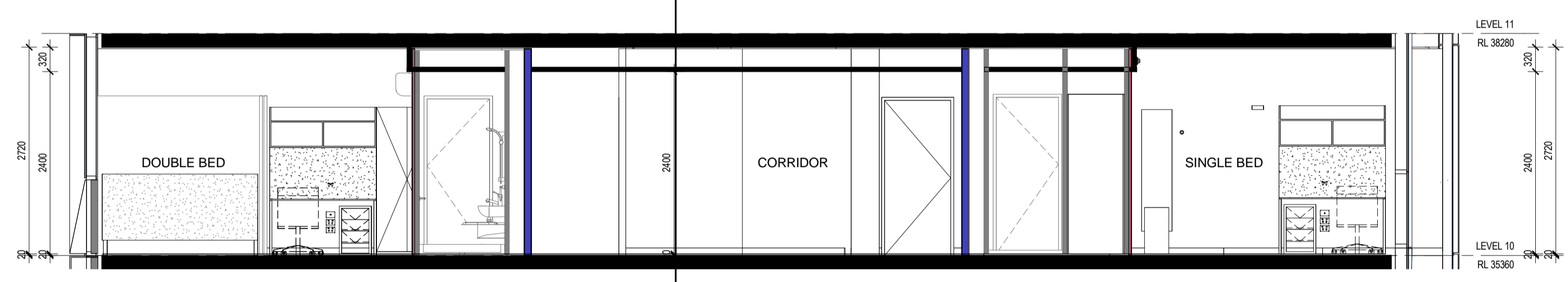
1 TYPICAL UPPER LEVEL SOU PLAN
1:50



3 TYPICAL UPPER LEVEL CEILING PLAN
1:50



2 CORNER TWIN STUDIO SOU PLAN
1:50

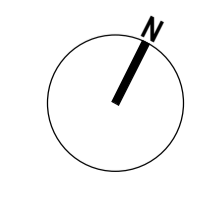


4 SECTION A
1:50



Revisions No.	Date	Description
1	07.09.2015	For Consultant Coordination
2	15.09.2015	DA Draft For Review
3	23.09.2015	DA Review
4	22.01.2016	Modified DA Issue

Ver	App'd	Key
RC		
PF		
GM		



Client
Urbanest



Architect



79 Myrtle Street Chippendale NSW 2008 AUSTRALIA
ph +61 2 9311 8222 fx +61 2 9311 8200
ABN 53 003 782 250

Project

BUILDING W1
STUDENT ACCOMMODATION
DARLING DRIVE, DARLING
SQUARE, SYDNEY, NSW

Proj. No. 15028

Drawing Title

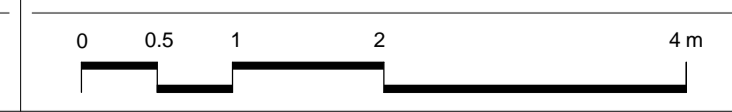
SOU LAYOUTS 1

Sheet Status

NOT FOR CONSTRUCTION

Scale

1:50 @A1

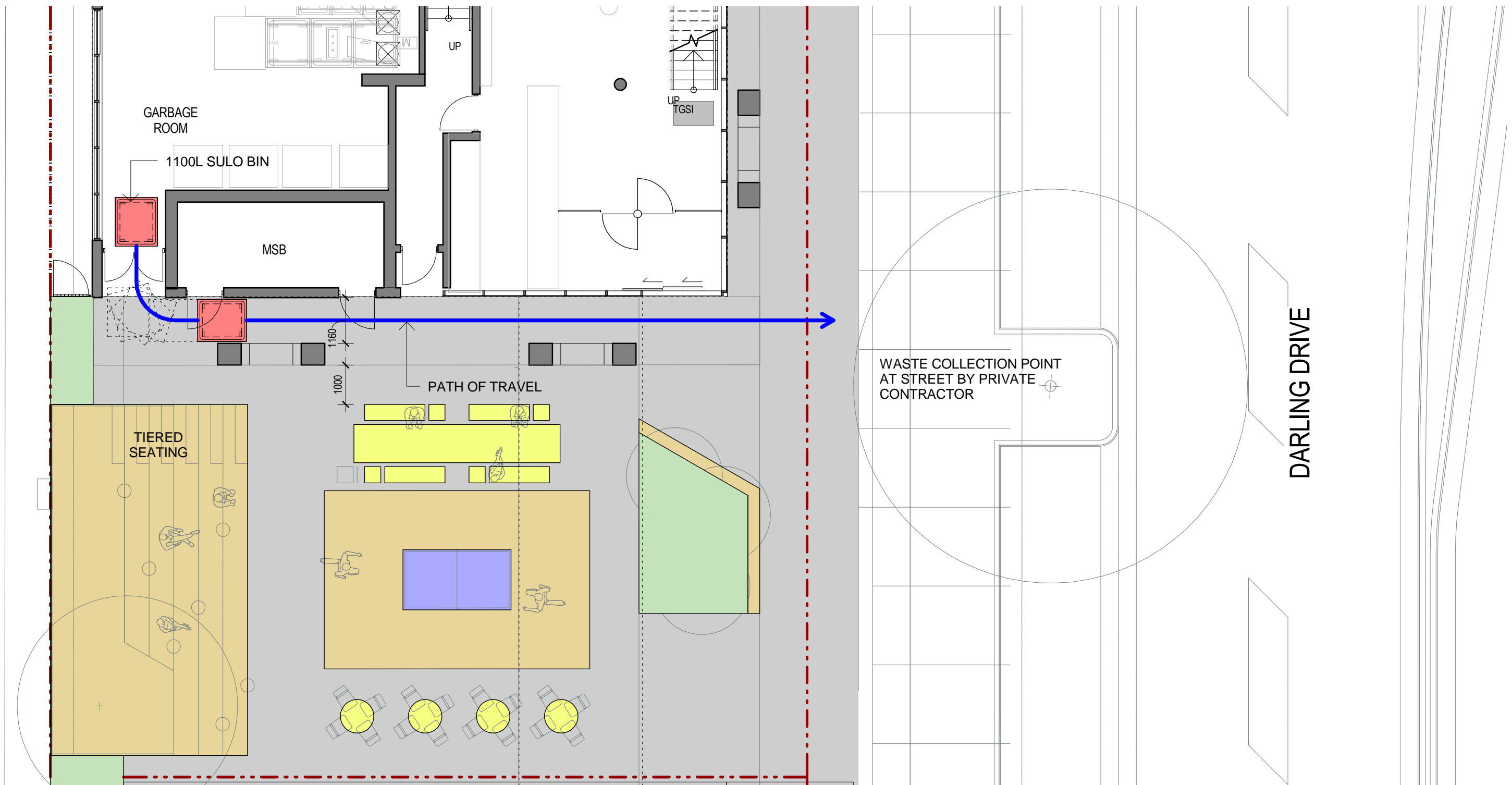


Drawing No.

DA5100

Issue

4



APPENDIX F - MATERIALS BOARD

South & West Facades



Housing Villaverde, Madrid, Spain, David Chipperfield Architects

The Western Facade is a denser, heavier appearance to conceptually form the 'city wall' and respond to the bulk, form and materials in the Powerhouse and warehouse buildings to the north. The treatment is responsive to the massing and is expressed through a proportioned windows providing protection from the western sun.

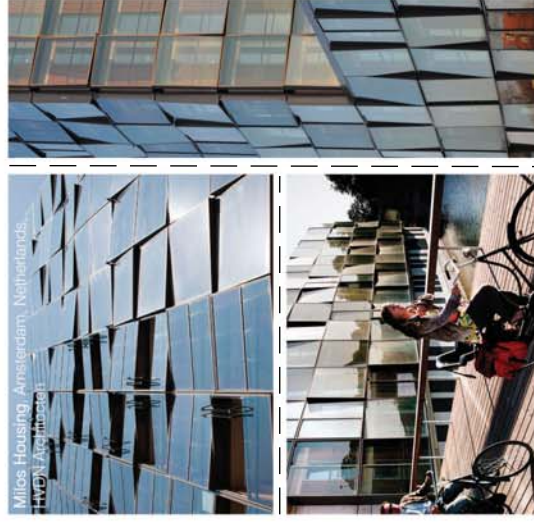
The window pattern is inspired by the brick formation of the Powerhouse; the panel divisions and openings are arranged purposefully, where every second brick is removed in each course to create simple openings.

Both colour and texture are strong references to masonry walls materiality, utilising a warm subtle varied tone, following the varying density of the windows present.

The cladding to the lower floors is more transparent, as it is a public zone. Achieving a visual connection from the inside and out, creating a rich atmosphere.

- Clear glass
- Light grey aluminium framing
- Metal mesh & louvres
- Charcoal columns

East Facade (High)



Milco Housing, Amsterdam, Netherlands, HVR, Wageningen

The Eastern Facade and Northern Facades will be read in the context of the whole Southern Precinct, thus becomes part of a 'family' of buildings on the site. The treatment of the east facade responds contextually, with a panelised facade system using subtle variations in size and angle to create a dynamic visual effect to the play of light on water, with differing shades of blue.

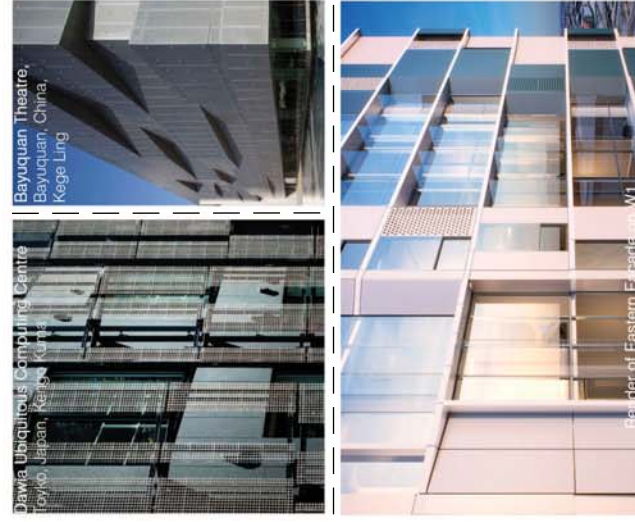
The facade has an overlaid feature grid pattern with faceted infill panels; these are angled so as to catch and reflect various angles of sunlight and create a shimmering effect to visually break up the bulk of the building.

Materials are expressed metal profiles making up the overlaid grid pattern, metal infill panels and glass with aluminum framing within the openings. Spandrels are set in the glazing with colourback glass panels to match the windows.

This facade is light in colour and reflective in nature.

- Clear glass
- Dark grey colourback glass to spandrels
- Dark grey aluminium glazing frame
- Faceted metal panels in shades of blue and pale grey

North-Eastern Facades



Jawia Ubiquitous Commerce Centre, Tokyo, Japan, Kenye Kurita

Bayuquan Theatre, Bayuquan, China, Kege Ling

Border of Eastern F. Facade - W1

The North-Eastern Facade is sustainability glazed to take advantage of views to the north-east over Tumbalong Park and Darling Harbour, and features perforated panels and vertical and horizontal louvres designed to break up the facade into vertical strips reflecting the tall, slender residential towers around the site.

Materials are light blue and metallic silver in colour.

- Clear glass
- Colourback glass to spandrels
- Silver metal aluminium glazing frame
- Silver metal louvres / perforated metal screens

Street Level



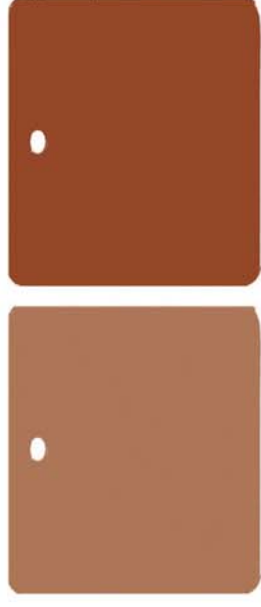
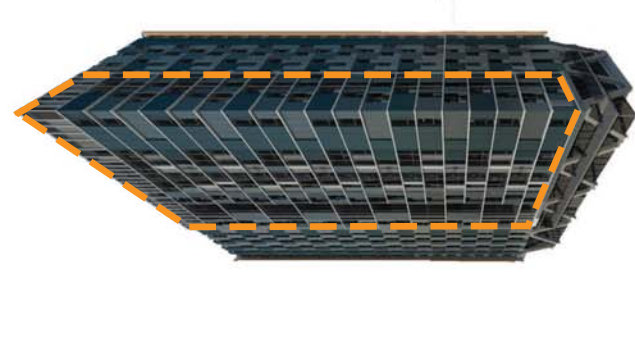
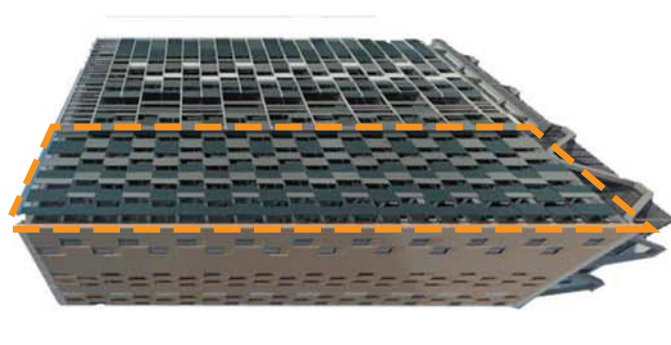
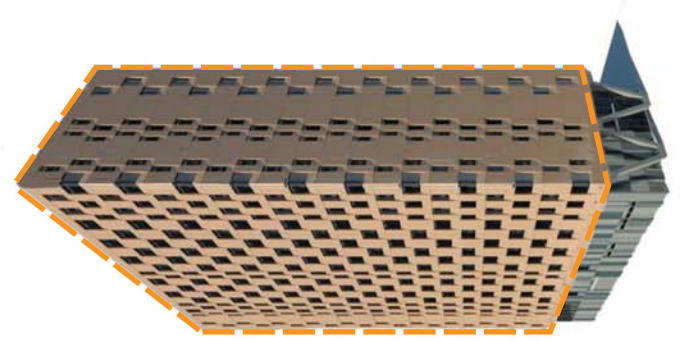
Whitechapel Hives Store, London, UK, David Adjaye

The character of the lower 2 levels responds to the functions on these levels and their relationship to the street.

This treatment extends to all three facades from the north-east to the south-east, expressing a relationship to the public realm on all sides and avoiding the appearance of a 'back' to any side.

The language of these facades is scaled down to reflect the human scale of the public realm. The materials are inspired by nature reflecting the trees and soft landscaping along Darling Drive and Northern Park. The colonnade provides an interface with the public realm, modulating the spatial scale as you approach and is heroic in appearance, as if the mass of the building has been required to invite the visitor to enter the soft, light inner core of the building.

As public / common spaces they are primarily glazed to form a visual connection with the street and publicise their function.



Cladding Colour 1

Cladding Colour 2



Window Framing

Dark Grey Glass



Cladding Colour 3

Cladding Colour 4



Window Framing

Articulation Colour



Cladding Colour 5

Cladding Colour 6



Window Framing

Articulation Colour

