

Guide to reading Sydney Water DBYD Plans





Asset Information



Legend

Sewer		Property Details	
Sewer Main (with flow arrow & size type text)		Boundary Line	
Disused Main		Easement Line	
Rising Main		House Number	
Maintenance Hole (with upstream depth to invert)		Lot Number	
Sub-surface chamber		Proposed Land	
Maintenance Hole with Overflow chamber		Sydney Water Heritage Site (please call 132 092 and ask for the Heritage Unit)	
Ventshaft EDUCT			
Ventshaft INDUCT			
Property Connection Point (with chainage to downstream MH)			
Concrete Encased Section			
Terminal Maintenance Shaft			
Maintenance Shaft			
Rodding Point			
Lamphole			
Vertical			
Pumping Station			
Sewer Rehabilitation			
Pressure Sewer		Water	
Pressure Sewer Main		WaterMain - Potable (with size type text)	
Pump Unit (Alarm, Electrical Cable, Pump Unit)		Disconnected Main - Potable	
Property Valve Boundary Assembly		Proposed Main - Potable	
Stop Valve		Water Main - Recycled	
Reducer / Taper		Special Supply Conditions - Potable	
Flushing Point		Special Supply Conditions - Recycled	
		Restrained Joints - Potable	
		Restrained Joints - Recycled	
		Hydrant	
		Maintenance Hole	
		Stop Valve	
		Stop Valve with By-pass	
		Stop Valve with Tapers	
		Closed Stop Valve	
		Air Valve	
		Valve	
		Scour	
		Reducer / Taper	
		Vertical Bends	
		Reservoir	
		Recycled Water is shown as per Potable above. Colour as indicated	
Vacuum Sewer		Private Mains	
Pressure Sewer Main		Potable Water Main	
Division Valve		Recycled Water Main	
Vacuum Chamber		Sewer Main	
Clean Out Point		Symbols for Private Mains shown grey	
Stormwater			
Stormwater Pipe			
Stormwater Channel			
Stormwater Gully			
Stormwater Maintenance Hole			



Pipe Types

ABS	Acrylonitrile Butadiene Styrene	AC	Asbestos Cement
BRICK	Brick	CI	Cast Iron
CICL	Cast Iron Cement Lined	CONC	Concrete
COPPER	Copper	DI	Ductile Iron
DICL	Ductile Iron Cement (mortar) Lined	DIPL	Ductile Iron Polymeric Lined
EW	Earthenware	FIBG	Fibreglass
FL BAR	Forged Locking Bar	GI	Galvanised Iron
GRP	Glass Reinforced Plastics	HDPE	High Density Polyethylene
MS	Mild Steel	MSCL	Mild Steel Cement Lined
PE	Polyethylene	PC	Polymer Concrete
PP	Polypropylene	PVC	Polyvinylchloride
PVC - M	Polyvinylchloride, Modified	PVC - O	Polyvinylchloride, Oriented
PVC - U	Polyvinylchloride, Unplasticised	RC	Reinforced Concrete
RC-PL	Reinforced Concrete Plastics Lined	S	Steel
SCL	Steel Cement (mortar) Lined	SCL IBL	Steel Cement Lined Internal Bitumen Lined
SGW	Salt Glazed Ware	SPL	Steel Polymeric Lined
SS	Stainless Steel	STONE	Stone
VC	Vitrified Clay	WI	Wrought Iron
WS	Woodstave		

Further Information

Please consult the [Dial Before You Dig enquiries](#) page on the Sydney Water website

For general enquiries please call the Customer Contact Centre on **132 092**

In an emergency, or to notify Sydney Water of damage or threats to its structures, call 13 20 90 (24 hours, 7 days)



IMPORTANT INFORMATION - DIAL BEFORE YOU DIG

Attention: You must read the information below

The material provided or made available to you by Sydney Water (including on the Sydney Water website) in relation to your Dial Before You Dig enquiry (**Information**) is provided on each of the following conditions, which you are taken to have accepted by using the Information:

- 1 The Information has been generated by an automated system based on the area highlighted in the "Locality Indication Only" window on your Caller Confirmation. It is your responsibility to ensure that the dig site is properly defined when submitting your Dial Before You Dig enquiry and, if the Information does not match the dig site, to resubmit your enquiry for the correct dig site.
- 2 Neither Sydney Water nor Dial Before You Dig make any representation or give any guarantee, warranty or undertaking (express or implied) as to the currency, accuracy, completeness, effectiveness or reliability of the Information. The Information, including Sydney Water plans and work-as-executed diagrams, amongst other things:
 - (a) may not show all existing structures, including Sydney Water's pipelines, particularly in relation to newer developments and in relation to structures owned by parties who do not participate in the Dial Before You Dig service;
 - (b) may be out of date and not show changes to surface levels, road alignments, fences, buildings and the like;
 - (c) is approximate only and is therefore not suitable for scaling purposes; and
 - (d) does not show locations of property services (often called house service lines) belonging to or servicing individual customers, which are usually connected to Sydney Water's structures.
- 3 You are responsible for, amongst other things:
 - (a) exposing underground structures, including Sydney Water's pipelines, by pot-holing using hand-held tools or vacuum techniques so as to determine the precise location and extent of structures before any mechanical means of excavation are used;
 - (b) the safe and proper excavation of and for underground works and structures, including having regard to the fact that asbestos cement pipelines, which can pose a risk to health, may form part of Sydney Water's water and sewerage reticulation systems;
 - (c) protecting underground structures, including Sydney Water's pipelines, from damage and interference;
 - (d) maintaining minimum clearances between Sydney Water's structures and structures belonging to others;
 - (e) ensuring that backfilling of excavation work in the vicinity of Sydney Water's structures complies with Sydney Water's standards contained on its website or otherwise communicated to you;
 - (f) notifying Sydney Water immediately of any damage caused or threat of damage to Sydney Water's structures;
 - (g) ensuring that plans are approved by Sydney Water (usually signified by stamping) prior to landscaping or building over or in the vicinity of any Sydney Water structure; and
 - (h) ensuring that the Information is used only for the purposes for which Sydney Water and Dial Before You Dig intended.

- 4 You acknowledge that you use the Information at your own risk. In consideration for the provision of the Dial Before You Dig service and the Information by Sydney Water and Dial Before You Dig, to the fullest extent permitted by law:
- (a) all conditions and guarantees concerning the Information (whether as to quality, outcome, fitness, care, skill or otherwise) expressed or implied by statute, common law, equity, trade, custom or usage or otherwise are expressly excluded and to the extent that those statutory guarantees cannot be excluded, the liability of Sydney Water and Dial Before You Dig to you is limited to either of the following as nominated by Sydney Water in its discretion, which you agree is your only remedy:
 - (i) the supplying of the Information again; or
 - (ii) payment of the cost of having the Information supplied again;
 - (b) in no event will Sydney Water or Dial Before You Dig be liable for, and you release Sydney Water and Dial Before You Dig from, any Loss arising from or in connection with the Information, including the use of or inability to use the Information and delay in the provision of the Information:
 - (i) whether arising under statute or in contract, tort or any other legal doctrine, including any negligent act, omission or default (including wilful default) by Sydney Water or Dial Before You Dig; and
 - (ii) regardless of whether Sydney Water or Dial Before You Dig are or ought to have been aware of, or advised of, the possibility of such loss, costs or damages;
 - (c) you will indemnify Sydney Water and Dial Before You Dig against any Loss arising from or in connection with Sydney Water providing incorrect or incomplete information to you in connection with the Dial Before You Dig service; and
 - (d) you assume all risks associated with the use of the Dial Before You Dig and Sydney Water websites, including risk to your computer, software or data being damaged by any virus, and you release and discharge Sydney Water and Dial Before You Dig from all Loss which might arise in respect of your use of the websites.
- 5 **“Sydney Water”** means Sydney Water Corporation and its employees, agents, representatives and contractors. **“Dial Before You Dig”** means Dial Before You Dig Incorporated and its employees, agents, representatives and contractors. References to **“you”** include references to your employees, agents, representatives, contractors and anyone else using the Information. References to **“Loss”** include any loss, cost, expense, claim, liability or damage (including arising in connection with personal injury, death or any damage to or loss of property and economic or consequential loss, lost profits, loss of revenue, loss of management time, opportunity costs or special damages). To the extent of any inconsistency, the conditions in this document will prevail over any other information provided to you by Sydney Water and Dial Before You Dig.

In an emergency, or to notify Sydney Water of damage or threats to its structures, call 13 20 90 (24 hours, 7 days)

Further information and guidance is available in the Building Development and Plumbing section of Sydney Water's website at www.sydneywater.com.au, where you will find the following documents under 'Dial Before You Dig':

- Avoid Damaging Water and Sewer Pipelines
- Water Main Symbols
- Depths of Mains
- Guidelines for Building Over/Adjacent to Sydney Water Assets
- Clearances Between Underground Services

Or call **13 20 92** for Customer Enquires.

Note: The lodging of enquiries via www.1100.com.au will enable you to receive colour plans in PDF format 24 hours a day, 7 days a week via email.

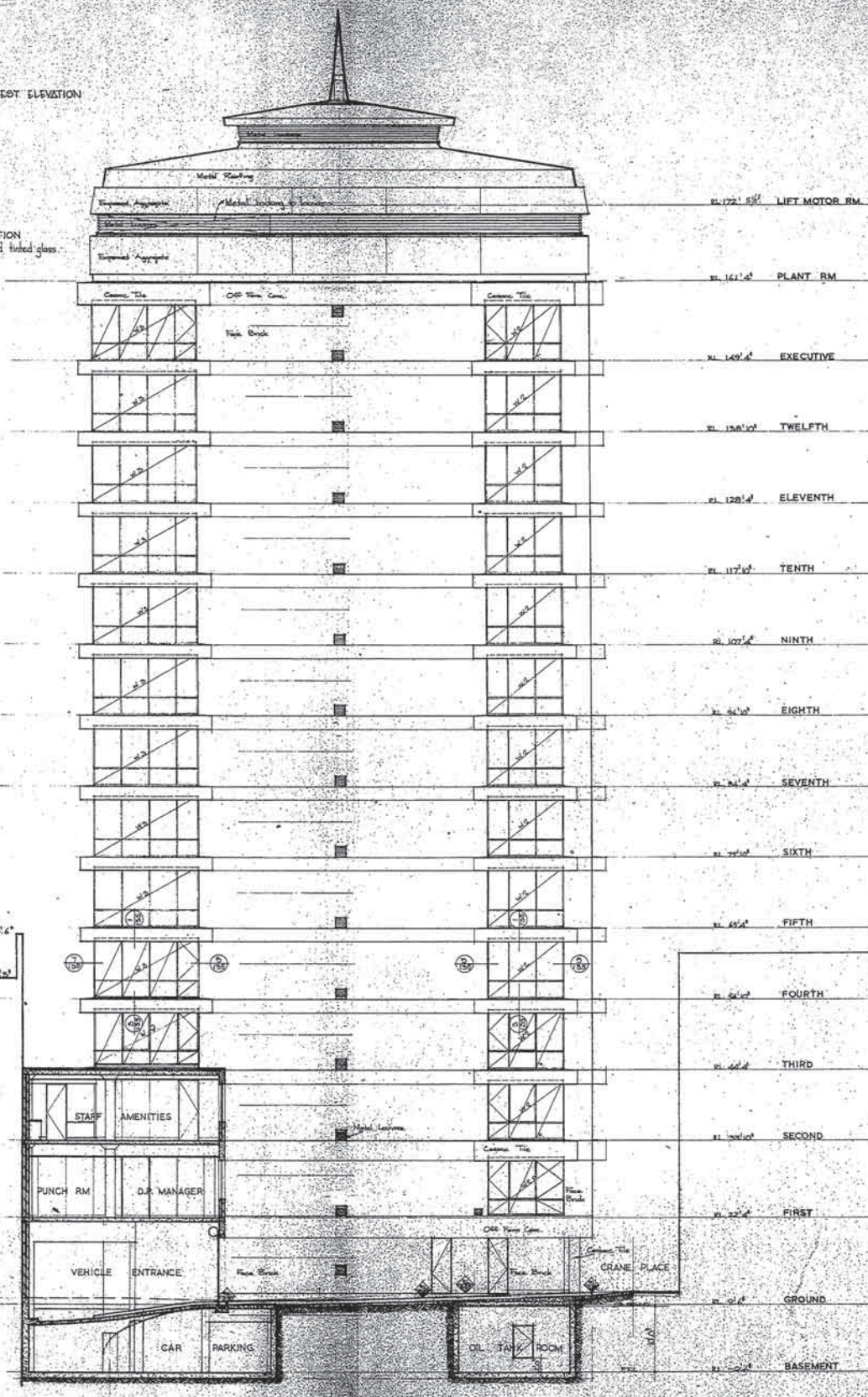
This communication is confidential. If you are not the intended recipient, please destroy all copies immediately. Sydney Water Corporation prohibits unauthorised copying or distribution of this communication.

Appendix E: Fairfax House Existing Basement drawings

WINDOW SCHEDULE FOR WEST ELEVATION

WINDOW No.	No. OFF.
W 2	12
W 3	10
W 9	1
W 20	1

GLAZING TO WEST ELEVATION
1st to 13th floors—Georgian wired tinted glass.



GOLDFIELDS HOUSE

STAFF AMENITIES

PUNCH RM D.P. MANAGER

VEHICLE ENTRANCE

CAR PARKING

OIL TANK ROOM

CRANE PLACE

EL 172.50 LIFT MOTOR RM

EL 161.00 PLANT RM

EL 149.00 EXECUTIVE

EL 138.00 TWELFTH

EL 128.00 ELEVENTH

EL 117.00 TENTH

EL 107.00 NINTH

EL 96.00 EIGHTH

EL 86.00 SEVENTH

EL 75.00 SIXTH

EL 64.00 FIFTH

EL 54.00 FOURTH

EL 44.00 THIRD

EL 34.00 SECOND

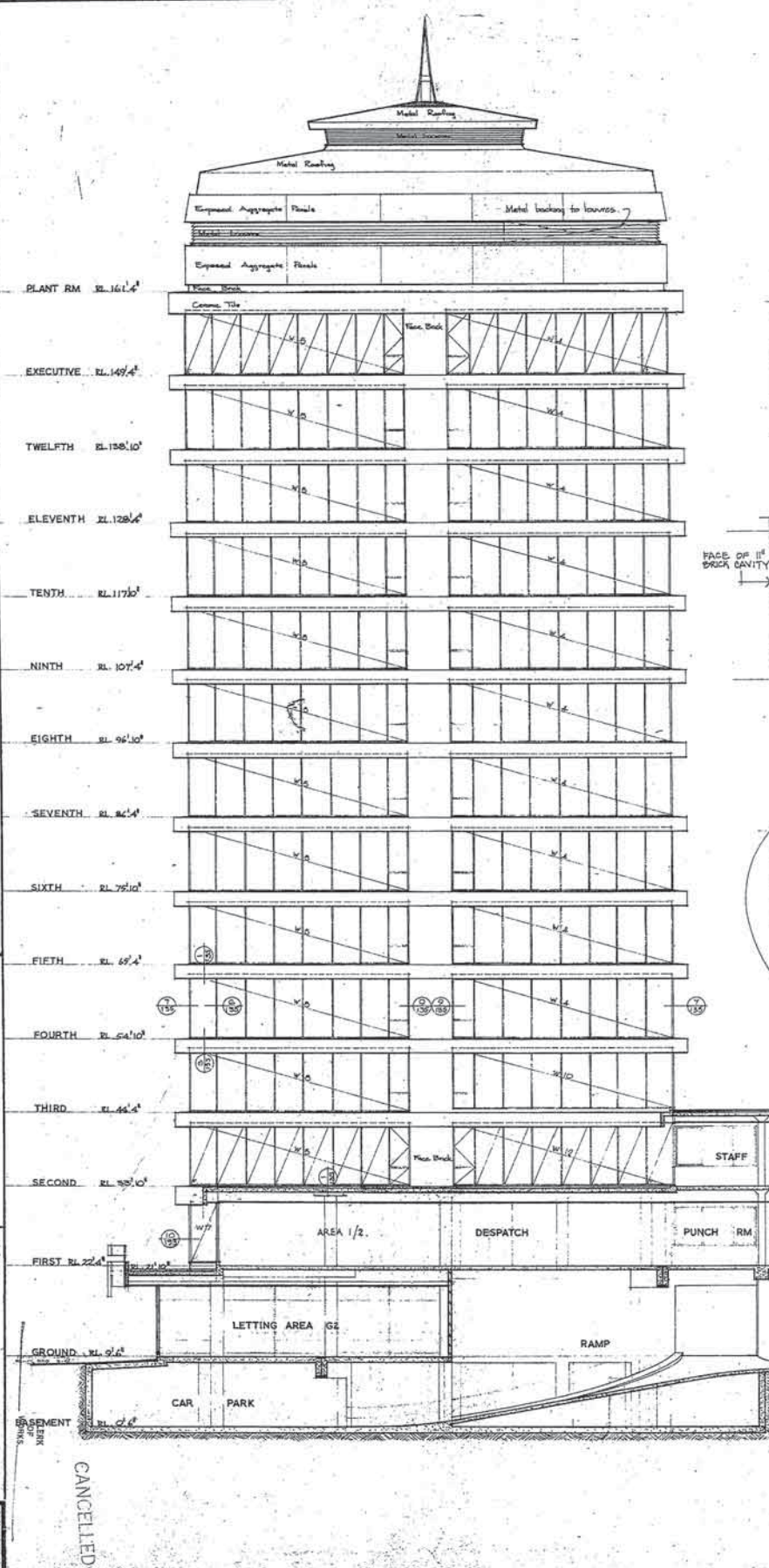
EL 24.00 FIRST

EL 0.00 GROUND

EL -10.00 BASEMENT

ARCHITECTS
 RIGOLD, THORP & WALKER ARCHITECTS
 44/45 BUILDING, SYDNEY ROAD, AUSTRALIA 2244
 PROPRIETOR
 THE NATURAL FIBRE AND CHIFFON
 ASSURANCE COMPANY LIMITED
 NEW OFFICE BUILDING
 22-23 PITT STREET, SYDNEY, N.S.W.
 ALLIANCE HOLDINGS LIMITED
 WEST ELEVATION WINDOW SCHEDULE
 131

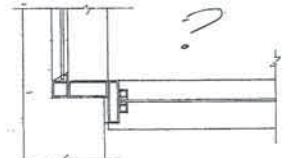
ALLIANCE HOLDINGS LIMITED
 NORTH ELEVATION WINDOW SCHEDULE
 130
 CANCELLED



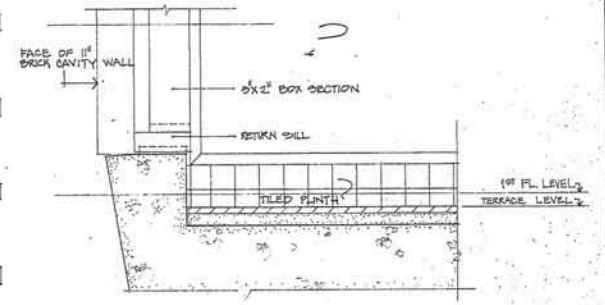
WINDOW SCHEDULE FOR NORTH ELEVATION

WINDOW No.	No. OFF.
W 4	10
W 5	12
W 10	1
W 12	1
W 17	1

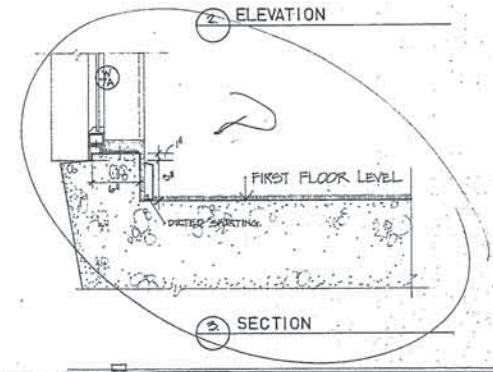
GLAZING FOR NORTH ELEVATION
1st to 13th floors — tinted glass



1 PLAN FIRST FLOOR WINDOW DETAILS SOUTH EAST CORNER



2 ELEVATION

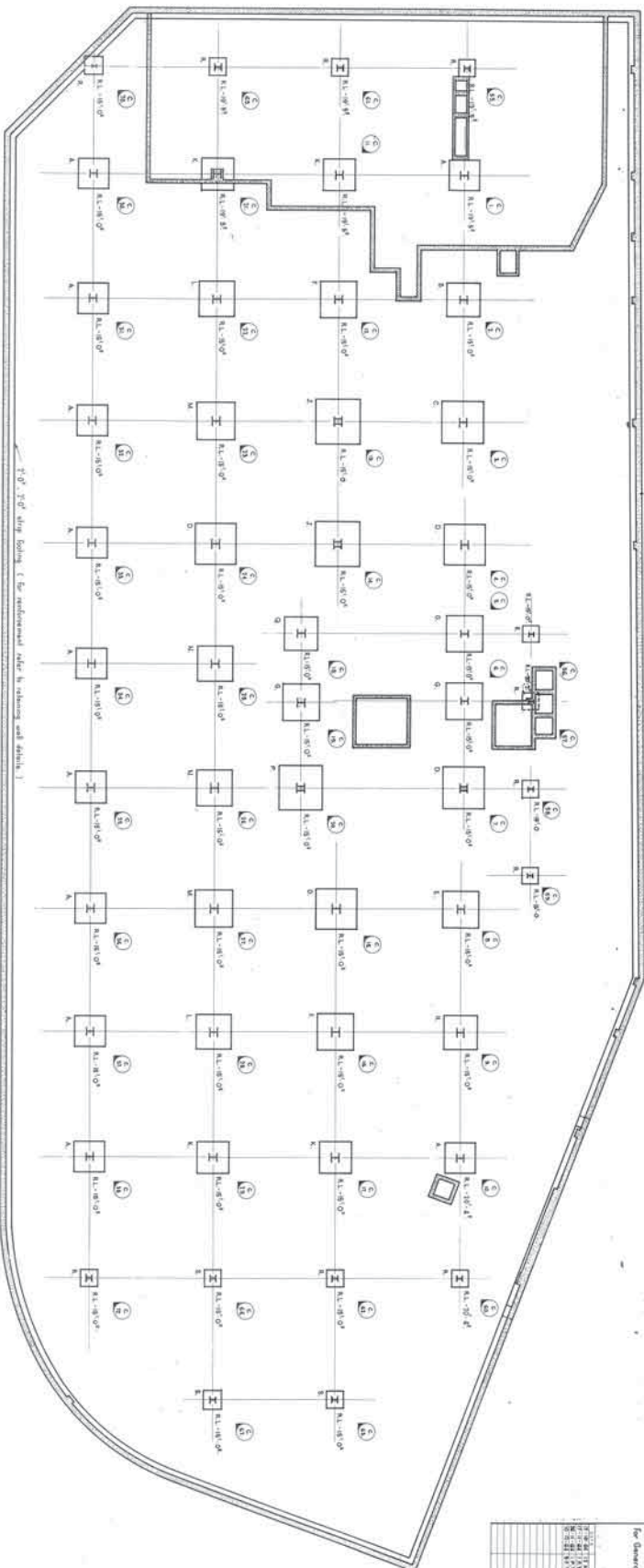


3 SECTION

Appendix F: Goldfields House Basement drawings

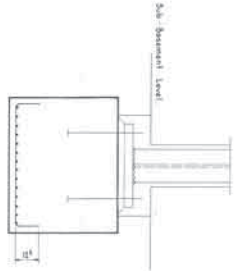
FOOTING TYPE	SIZE	REINFORCEMENT
A	3'0" x 3'0" x 4'0" deep	16#8 each way
B	6'0" x 6'0" x 4'0" x	16#8 x 1
C	7'0" x 7'0" x 4'0" x	16#8 x 1
D	7'5" x 7'5" x 4'0" x	16#8 x 1
E	8'0" x 8'0" x 4'0" x	16#8 x 1
F	8'0" x 8'0" x 4'0" x	16#8 x 1
G	8'0" x 8'0" x 4'0" x	16#8 x 1
H	8'0" x 8'0" x 4'0" x	16#8 x 1
I	8'0" x 8'0" x 4'0" x	16#8 x 1
J	8'0" x 8'0" x 4'0" x	16#8 x 1
K	8'0" x 8'0" x 4'0" x	16#8 x 1
L	8'0" x 8'0" x 4'0" x	16#8 x 1
M	8'0" x 8'0" x 4'0" x	16#8 x 1
N	8'0" x 8'0" x 4'0" x	16#8 x 1
O	8'0" x 8'0" x 4'0" x	16#8 x 1
P	8'0" x 8'0" x 4'0" x	16#8 x 1
Q	8'0" x 8'0" x 4'0" x	16#8 x 1
R	8'0" x 8'0" x 4'0" x	16#8 x 1
S	8'0" x 8'0" x 4'0" x	16#8 x 1

16#8 = #8 rebar. All rebar to be placed in concrete.



FOUNDATION PLAN

16#8 rebar to top of footing.
 Foundations to be placed on a maximum bearing capacity of 10 tons/sq ft for concrete.
 Note: Columns 10" dia. x 8' high and beam 10" dia. x 8' high.



Typical for all reinforced footings.

For General Notes see Dwg. # 2564 - 0



NO.	REVISION	DATE	BY	CHKD.

FOUNDATION PLAN & DETAILS

GOLD FIELDS HOUSE CONSOLIDATED GOLD FIELDS (AUSTRALIA) PTY. LIMITED

BANKING & HILL
 CONSULTING ENGINEERS (AUSTRALIA)
 LEVEL 10/100, STANLEY STREET - MELB.
 3000 VICTORIA AUSTRALIA
 PHONE: 03 9412 1111
 FAX: 03 9412 1112
 TELETYPE: 03 9412 1113

PROJECT: GOLD FIELDS HOUSE CONSOLIDATED GOLD FIELDS (AUSTRALIA) PTY. LIMITED
NO. OF SHEETS: 21
SHEET NO.: 2564 - 21

STRUCTURAL ENGINEERS:
 RAHNING & HILL
 42 MILLER ST. NORTH SYDNEY
 TEL. 93 0185

CONTRACTOR
 TO VERIFY ALL
 DIMENSIONS
 AT THE SITE

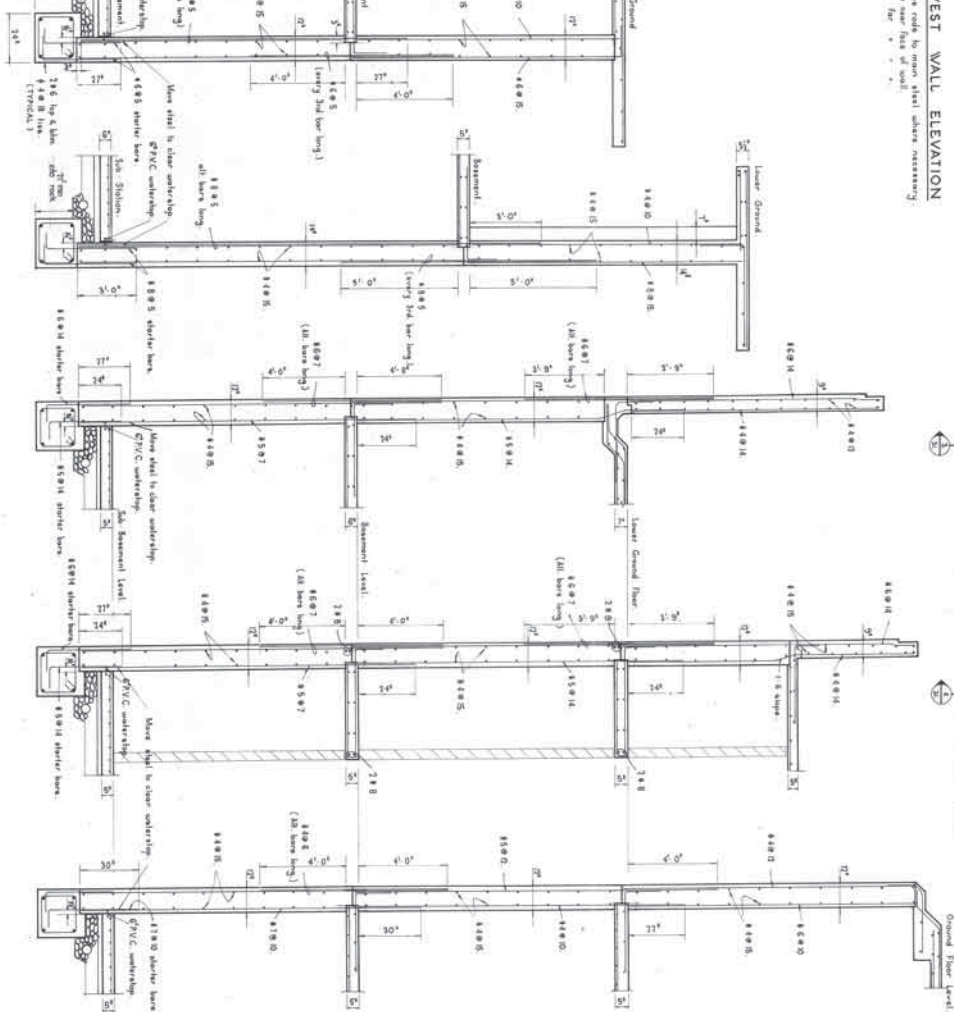
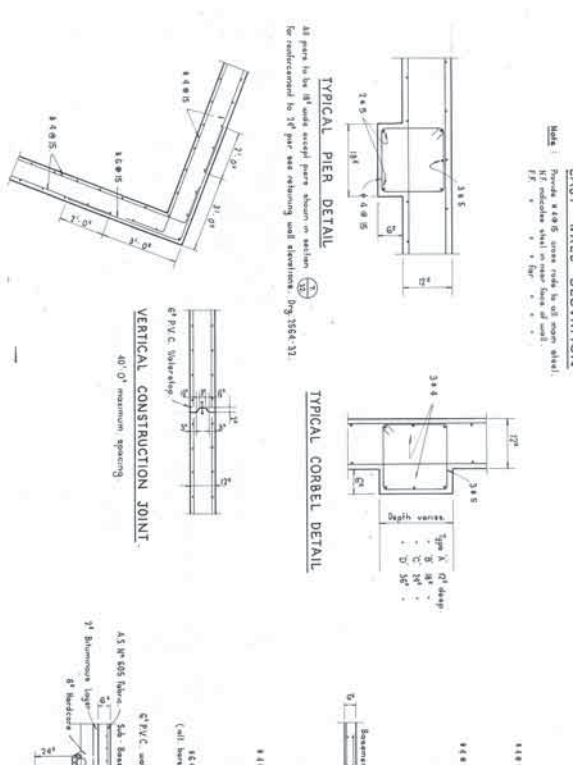
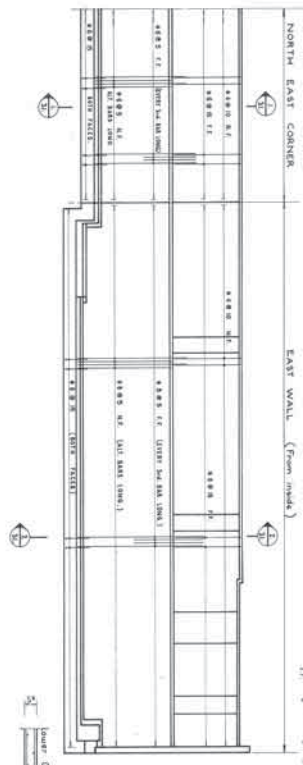
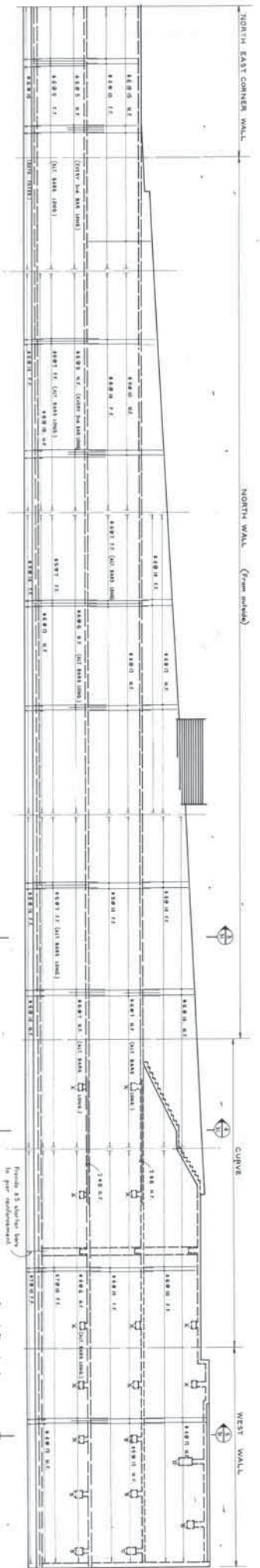


GOLD FIELDS HOUSE

PROPRIETOR:
 CONSOLIDATED GOLD FIELDS
 (AUSTRALIA) PTY. LIMITED

DRAWING TITLE:
 EXCAVATION PLAN

DATE OF THIS DRAWING: 1964
 DRAWN BY: J. W. WATSON
 CHECKED BY: J. W. WATSON
 SCALE: 1/4" = 1'-0"
 1/8" = 1'-0"
 1/16" = 1'-0"
 1/32" = 1'-0"
 1/64" = 1'-0"
 1/128" = 1'-0"
 1/256" = 1'-0"
 1/512" = 1'-0"
 1/1024" = 1'-0"
 1/2048" = 1'-0"
 1/4096" = 1'-0"
 1/8192" = 1'-0"
 1/16384" = 1'-0"
 1/32768" = 1'-0"
 1/65536" = 1'-0"
 1/131072" = 1'-0"
 1/262144" = 1'-0"
 1/524288" = 1'-0"
 1/1048576" = 1'-0"
 1/2097152" = 1'-0"
 1/4194304" = 1'-0"
 1/8388608" = 1'-0"
 1/16777216" = 1'-0"
 1/33554432" = 1'-0"
 1/67108864" = 1'-0"
 1/134217728" = 1'-0"
 1/268435456" = 1'-0"
 1/536870912" = 1'-0"
 1/1073741824" = 1'-0"
 1/2147483648" = 1'-0"
 1/4294967296" = 1'-0"
 1/8589934592" = 1'-0"
 1/17179869184" = 1'-0"
 1/34359738368" = 1'-0"
 1/68719476736" = 1'-0"
 1/137438953472" = 1'-0"
 1/274877906944" = 1'-0"
 1/549755813888" = 1'-0"
 1/1099511627776" = 1'-0"
 1/2199023255552" = 1'-0"
 1/4398046511104" = 1'-0"
 1/8796093022208" = 1'-0"
 1/17592186044416" = 1'-0"
 1/35184372088832" = 1'-0"
 1/70368744177664" = 1'-0"
 1/140737488355328" = 1'-0"
 1/281474976710656" = 1'-0"
 1/562949953421312" = 1'-0"
 1/1125899906842624" = 1'-0"
 1/2251799813685248" = 1'-0"
 1/4503599627370496" = 1'-0"
 1/9007199254740992" = 1'-0"
 1/18014398509481984" = 1'-0"
 1/36028797018963968" = 1'-0"
 1/72057594037927936" = 1'-0"
 1/144115188075855872" = 1'-0"
 1/288230376151711744" = 1'-0"
 1/576460752303423488" = 1'-0"
 1/1152921504606846976" = 1'-0"
 1/2305843009213693952" = 1'-0"
 1/4611686018427387904" = 1'-0"
 1/9223372036854775808" = 1'-0"
 1/18446744073709551616" = 1'-0"
 1/36893488147419103232" = 1'-0"
 1/73786976294838206464" = 1'-0"
 1/147573952589676412928" = 1'-0"
 1/295147905179352825856" = 1'-0"
 1/590295810358705651712" = 1'-0"
 1/1180591620717411303424" = 1'-0"
 1/2361183241434822606848" = 1'-0"
 1/4722366482869645213696" = 1'-0"
 1/9444732965739290427392" = 1'-0"
 1/18889465931478580854784" = 1'-0"
 1/37778931862957161709568" = 1'-0"
 1/75557863725914323419136" = 1'-0"
 1/151115727451828646838272" = 1'-0"
 1/302231454903657293676544" = 1'-0"
 1/604462909807314587353088" = 1'-0"
 1/1208925819614629174706176" = 1'-0"
 1/2417851639229258349412352" = 1'-0"
 1/4835703278458516698824704" = 1'-0"
 1/9671406556917033397649408" = 1'-0"
 1/19342813113834066795298816" = 1'-0"
 1/38685626227668133590597632" = 1'-0"
 1/77371252455336267181195264" = 1'-0"
 1/154742504910672534362390512" = 1'-0"
 1/309485009821345068724781024" = 1'-0"
 1/618970019642690137449562048" = 1'-0"
 1/1237940039285380274899124096" = 1'-0"
 1/2475880078570760549798248192" = 1'-0"
 1/4951760157141521099596496384" = 1'-0"
 1/9903520314283042199192992768" = 1'-0"
 1/1980704062856608439838585536" = 1'-0"
 1/3961408125713216879677171072" = 1'-0"
 1/7922816251426433759354342144" = 1'-0"
 1/15845632502852867518708684288" = 1'-0"
 1/31691265005705735037417368576" = 1'-0"
 1/63382530011411470074834737152" = 1'-0"
 1/126765060022822940149669474304" = 1'-0"
 1/253530120045645880299338948608" = 1'-0"
 1/507060240091291760598677897216" = 1'-0"
 1/1014120480182583521197355794432" = 1'-0"
 1/2028240960365167042394711588864" = 1'-0"
 1/4056481920730334084789423177728" = 1'-0"
 1/8112963841460668169578846355456" = 1'-0"
 1/1622592768320133739155771311104" = 1'-0"
 1/3245185536640267478311542622208" = 1'-0"
 1/6490371073280534956623085244416" = 1'-0"
 1/12980742145761069913246164888832" = 1'-0"
 1/25961484291522139826492329777664" = 1'-0"
 1/51922968583044279652984659555328" = 1'-0"
 1/103845937166088553105969319110656" = 1'-0"
 1/207691874332177106211938638221312" = 1'-0"
 1/415383748664354212423877276442624" = 1'-0"
 1/830767497328708424847754552885248" = 1'-0"
 1/1661534994657416849755509105770496" = 1'-0"
 1/3323069989314833699511018211541952" = 1'-0"
 1/6646139978629667399022036423083904" = 1'-0"
 1/13292279957259334798044072846167808" = 1'-0"
 1/26584559914518669596088145692335616" = 1'-0"
 1/531691198290373391921762913846723328" = 1'-0"
 1/1063382396580746783843525827693446656" = 1'-0"
 1/2126764793161493567687051655386893312" = 1'-0"
 1/4253529586322987135374103310773786624" = 1'-0"
 1/8507059172645974270748206621547573248" = 1'-0"
 1/17014118345291948541496413243095146496" = 1'-0"
 1/34028236690583897082992826486190292992" = 1'-0"
 1/68056473381167794165985652972380585984" = 1'-0"
 1/136112946762335588331971315944761719776" = 1'-0"
 1/272225893524671176663942631889523439552" = 1'-0"
 1/544451787049342353327885263779046879104" = 1'-0"
 1/1088903574098684706655770527558135158208" = 1'-0"
 1/2177807148197369413311541055116270316416" = 1'-0"
 1/4355614296394738826623082110254540632832" = 1'-0"
 1/8711228592789477653246164220509081255664" = 1'-0"
 1/17422457185778955306492328441018164111296" = 1'-0"
 1/34844914371557910612994656882036328222592" = 1'-0"
 1/69689828743115821225989313764072656445184" = 1'-0"
 1/139379657486237644511977867281453128889376" = 1'-0"
 1/2787593149724752890239557445629071777776" = 1'-0"
 1/5575186299449505780479114891258143555552" = 1'-0"
 1/11150372598999011560958229782562871111104" = 1'-0"
 1/2230074519799802312191645956512574222208" = 1'-0"
 1/4460149039599604624383291913025444444416" = 1'-0"
 1/8920298079199209248766583826050888888832" = 1'-0"
 1/1784059615839841849753316653210177777664" = 1'-0"
 1/35681192316796836995066333064203555552" = 1'-0"
 1/71362384633593673990132666128407111104" = 1'-0"
 1/14272476926718734798026533225681422208" = 1'-0"
 1/2854495385343746959605306645136284444416" = 1'-0"
 1/5708990770687493919210613290272568888832" = 1'-0"
 1/1141798154137498783842122658054537777664" = 1'-0"
 1/22835963082749975676842453161091555552" = 1'-0"
 1/456719261654999513537849063221819111104" = 1'-0"
 1/91343852330999902707569812644383822208" = 1'-0"
 1/1826877046619998054151396252887664444416" = 1'-0"
 1/3653754093239996108302792505775328888832" = 1'-0"
 1/7307508186479992216605585011550717777664" = 1'-0"
 1/14615016372959984433211170023001555552" = 1'-0"
 1/29230032745919968866423540046003111104" = 1'-0"
 1/58460065491839937732847080092006222208" = 1'-0"
 1/116920130983679875465694160184012444416" = 1'-0"
 1/233840261967359750931388320368024888832" = 1'-0"
 1/4676805239347195018627766407360497777664" = 1'-0"
 1/93536104786943900372555328147209955552" = 1'-0"
 1/1870722095738878007451106562944199111104" = 1'-0"
 1/3741444191477756014902213125888398222208" = 1'-0"
 1/7482888382955512029804426251776796444416" = 1'-0"
 1/14965776765911024059608852503553592888832" = 1'-0"
 1/2993155353182204811921770500710717777664" = 1'-0"
 1/59863107063644096238435410014214355552" = 1'-0"
 1/119726214127288192476870820028427111104" = 1'-0"
 1/23945242825457638495374164005685422208" = 1'-0"
 1/478904856509152769907483280113708444416" = 1'-0"
 1/957809713018305539814965600225416888832" = 1'-0"
 1/1915619426036611079629931200450837777664" = 1'-0"
 1/38312388520732221593278624009016755552" = 1'-0"
 1/766247770414644431865572480180335111104" = 1'-0"
 1/153249554082928886373114496036067022208" = 1'-0"
 1/306499108165857772746228992072134444416" = 1'-0"
 1/612998216331715545492457984144268888832" = 1'-0"
 1/122599643266343109098491588288537777664" = 1'-0"
 1/2451992865326862181969831765770755552" = 1'-0"
 1/49039857306537243639396635315415111104" = 1'-0"
 1/9807971461307448727879327063083022208" = 1'-0"
 1/19615942926154897455758654126160444416" = 1'-0"
 1/39231885852309794911517318252320888832" = 1'-0"
 1/784637717046195898230346365046417777664" = 1'-0"
 1/15692754340923917964606927300928355552" = 1'-0"
 1/313855086818478359292138546018567111104" = 1'-0"
 1/627710173636956718584277092037134444416" = 1'-0"
 1/1255420347273913371768554184074268888832" = 1'-0"
 1/251084069454782674353710836814853777664" = 1'-0"
 1/5021681389095653487074216736296755552" = 1'-0"
 1/10043362778191306974148334732595111104" = 1'-0"
 1/2008672555638261394829666946519022208" = 1'-0"
 1/40173451112765227896593338930380444416" = 1'-0"
 1/80346902225530455793186677860760888832" = 1'-0"
 1/160693804451060911586373357321537777664" = 1'-0"
 1/3213876089021218231727467466430755552" = 1'-0"
 1/64277521780424364634549393328615111104" = 1'-0"
 1/12855504356084872926909878665723022208" = 1'-0"
 1/257110087121697458538197573314460444416" = 1'-0"
 1/51422017424339491707639514662892888832" = 1'-0"
 1/102844034848678983415279029325783777664" = 1'-0"
 1/20568806969735796683055805865156755552" = 1'-0"
 1/41137613939471593366111611730315111104" = 1'-0"
 1/8227522787894318673222322346063022208" = 1'-0"
 1/164550457757886373464464468921260444416" = 1'-0"
 1/329100915515772746928888978842520888832" = 1'-0"
 1/658201831031545493857777956845041777664" = 1'-0"
 1/13164036620630909877155551136900355552" = 1'-0"
 1/263280732412618197543111122738007111104" = 1'-0"
 1/52656146482523639508622245477601422208" = 1'-0"
 1/105312292845047279017244490955202444416" = 1'-0"
 1/210624585690094558034488981910404888832" = 1'-0"
 1/421249171380189116068977963820809777664" = 1'-0"
 1/8424983427603782321379559276416155552" = 1'-0"
 1/168499668552075646427591155528323111104" = 1'-0"
 1/3369993371041512928551823110664522208" = 1'-0"
 1/67399867420830258571036462213290444416" = 1'-0"
 1/13479973484166457142207292426580888832" = 1'-0"
 1/26959946968332914284445584933161777664" = 1'-0"
 1/5391989393666582856889116966632355552" = 1'-0"
 1/10783978787333165713778233933265111104" = 1'-0"
 1/2156795757466633142755446786653022208" = 1'-0"
 1/43135915149332662855108937333060444416" = 1'-0"
 1/862718302986653257102177846661208888832" = 1'-0"
 1/17254366059733065142035569333241777664" = 1'-0"
 1/3450873211946613028407113866648355552" = 1'-0"
 1/6901746423893226056814227733387111104" = 1'-0"
 1/1380349284778645211362845466677422208" = 1'-0"
 1/2760698569557290422725691333348444416" = 1'-0"
 1/5521397139114580845451382666696888832" = 1'-0"
 1/1104279427822916169090765333393777664" = 1'-0"
 1/220855885564583233818153066678755552" = 1'-0"
 1/4417117711291664676363061333575111104" = 1'-0"
 1/883423542258332935272612266715022208" = 1'-0"
 1/1766847084516665704545225333420444416" = 1'-0"
 1/3533694169033331409090500666840888832" = 1'-0"
 1/7067388338066662818181001333681777664" = 1'-0"
 1/1413477667613332563636200266776355552" = 1'-0"
 1/28269553352266651272724005335527111104" = 1'-0"
 1/5653910670453330254545801067105422208" = 1'-0"
 1/11307821340906660509096021334208444416" = 1'-0"
 1/22615642681813321018182042668416888832" = 1'-0"
 1/4523128536362664203636408533683377664" = 1'-0"
 1/9046257072725328407272817067366755552" = 1'-0"
 1/1809251414545065681454563413473111104" = 1'-0"
 1/361850282909013136290912682694622208" = 1'-0"
 1/7237005658180262725818253653892444416" = 1'-0"
 1/1447401131636052545163750730778888832" = 1'-0"
 1/289480226327210509032750146155777664" = 1'-0"
 1/57896045265442101806550029231155552" = 1'-0"
 1/1157920905308842036131000584623111104" = 1'-0"
 1/231584181061768407226200116924622208" = 1'-0"
 1/4631683621235368144524002338492444416" = 1'-0"
 1/926336724247073629044800467698888832" = 1'-0"
 1/185267344849414725808960093539777664" = 1'-0"
 1/37053468969882945161792018707955552" = 1'-0"
 1/741069379397658903235840374159111104" = 1'-0"
 1/148213875797511780647168074831822208" = 1'-0"
 1/2964277515950235612943361496636444416" = 1'-0"
 1/5928555031900471225886722993272888832" = 1'-0"
 1/1185711006380094245177344598654577664" = 1'-0"
 1/2371422012760188490354689197309155552" = 1'-0"
 1/474284402552037698070937839461822208" = 1'-0"
 1/9485688051040753961418756789236444416" = 1'-0"
 1/1897137610208150792283751377847111104" = 1'-0"
 1/379427522041630158456750275569422208" = 1'-0"
 1/7588550440832603169115005511388444416" = 1'-0"
 1/1517710088166520638223001107676888832" = 1'-0"
 1/303542017633304127644600221535377664" = 1'-0"
 1/607084035266608255289200443070755552" = 1'-0"
 1/121416807



NO.	REVISION	DATE	BY	CHKD.
1	Issue for tender	10/1/01
2	Issue for construction	10/1/01

PROJECT INFORMATION

GOLD FIELDS HOUSE
 CONSOLIDATED GOLD MINES
 AUSTRALIAN PTY. LIMITED

ARCHITECT & ENGINEER
 HARRIS & HILL
 40 MILLER STREET, NORTH SYDNEY - 2060

DATE: 10/1/01

SCALE: 1:10

TYPICAL CORNER DETAIL

SECTION

SECTION

SECTION

SECTION

SECTION

SECTION

ELEVATIONS & SECTIONS TO NORTH, EAST & WEST RETAINING WALLS.

Appendix G: Tank Stream Information


ENDORSED
CONSERVATION MANAGEMENT PLAN
Heritage Council

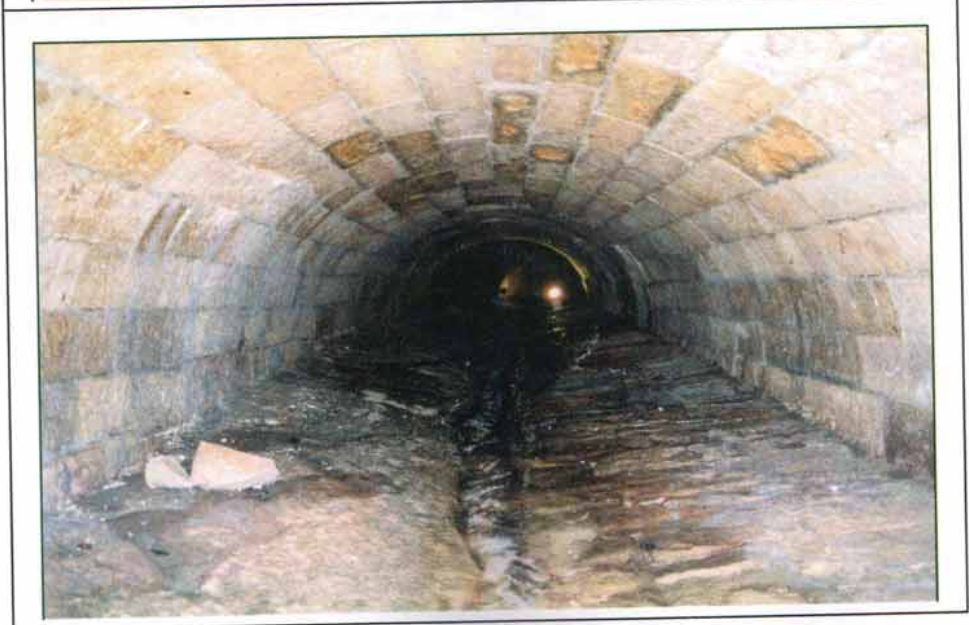

Date endorsed
20/2/2005
Date expires
20/2/2009
Copy no. 2
of 2 stamped
copies
590/04382
NSWHO File

Sydney
WATER

TANK STREAM

Conservation Management Plan

For Asset Management And Sydney Water Corporation



Jan 2005