

notes
All dimensions and setbacks to be verified prior to commencement, variations or discrepancies to be notified to the architect.

quality assurance system
authorised by: 
date: 09.06.2015

copyright
The copyright of this drawing together with any other documents prepared by crone partners architecture studios, pty ltd (cp) remains the property of cp. crone partners grants license for the use of this document for the purpose for which they are intended. This license is not transferable without the permission of cp.

architect
cronepartners
level 2, 364 kent street, sydney, nsw 2000

client
万达集团 WANDA GROUP
WANDA ONE SYDNEY
1 Alfred Street, Sydney NSW 2000

no.	revision note	by.	date
A	PRELIMINARY ISSUE	SH	09.06.2015
B	PRELIMINARY ISSUE TO BCA	SH	11.06.2015
C	ISSUE FOR CONSULTANT REVIEW	SH	16.06.2015
D	INDICATIVE PLANS FOR DA SUBMISSION	SH	22.06.2015

client
WANDA ONE SYDNEY PTY LTD
Level 19, 1 Alfred St, Sydney, nsw, 2000, australia
Ph: +61 2 8223 2101 Fax: 61 2 8252 4540


structural engineer
ROBERT BRID GROUP
Level 11, 551 Castlereagh St, Sydney NSW 2000, Australia

hydraulic
AECOM
Level 21, 420 George Street Sydney, NSW 2000, Australia

mechanical
AECOM
Level 21, 420 George Street Sydney, NSW 2000, Australia

electrical
AECOM
Level 21, 420 George Street Sydney, NSW 2000, Australia

scale
1:200 @ A1, 1:400 @ A3



project
SYDNEY ONE PROJECT
1 ALFRED STREET, 19-31 PITT STREET & 31A PITT STREET, SYDNEY NSW 2000

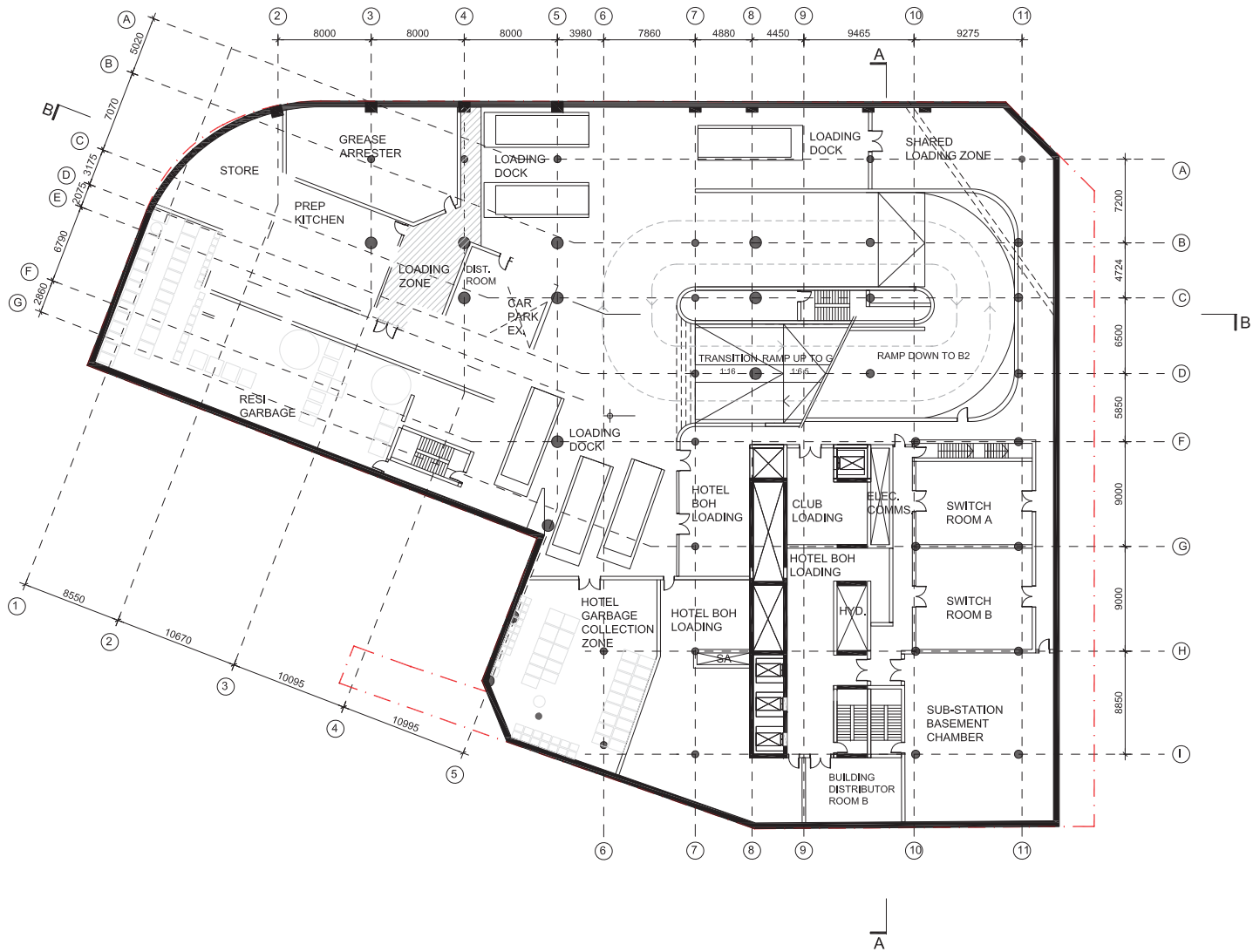
drawn: SH checked: BS date: 09.06.2015

cronepartners

drawing title
INDICATIVE DRAWING
BASEMENT 2

DEVELOPMENT APPLICATION

project no. CA 3054 drawing phase. SK drawing no. 04 rev. D



notes
All dimensions and setbacks to be verified prior to commencement, variations or discrepancies to be notified to the architect.

quality assurance system
authorised by:

date: 09.06.2015

architect
cronepartners
Level 2, 364 Kent Street, Sydney, NSW 2000

client
万达集团 WANDA GROUP
WANDA ONE SYDNEY
1 Alfred Street, Sydney, NSW 2000

no.	revision note	by.	date
A	PRELIMINARY ISSUE	SH	09.06.2015
B	PRELIMINARY ISSUE TO BCA	SH	11.06.2015
C	ISSUE FOR CONSULTANT REVIEW	SH	16.06.2015
D	INDICATIVE PLANS FOR DA SUBMISSION	SH	22.06.2015

no.	revision note	by.	date

no.	revision note	by.	date

no.	revision note	by.	date

no.	revision note	by.	date

no.	revision note	by.	date

no.	revision note	by.	date

project
SYDNEY ONE PROJECT
1 ALFRED STREET, 19-31 PITT STREET & 31A PITT STREET, SYDNEY NSW 2000

drawn: SH checked: BS date: 09.06.2015

drawing title
INDICATIVE DRAWING
BASEMENT 1

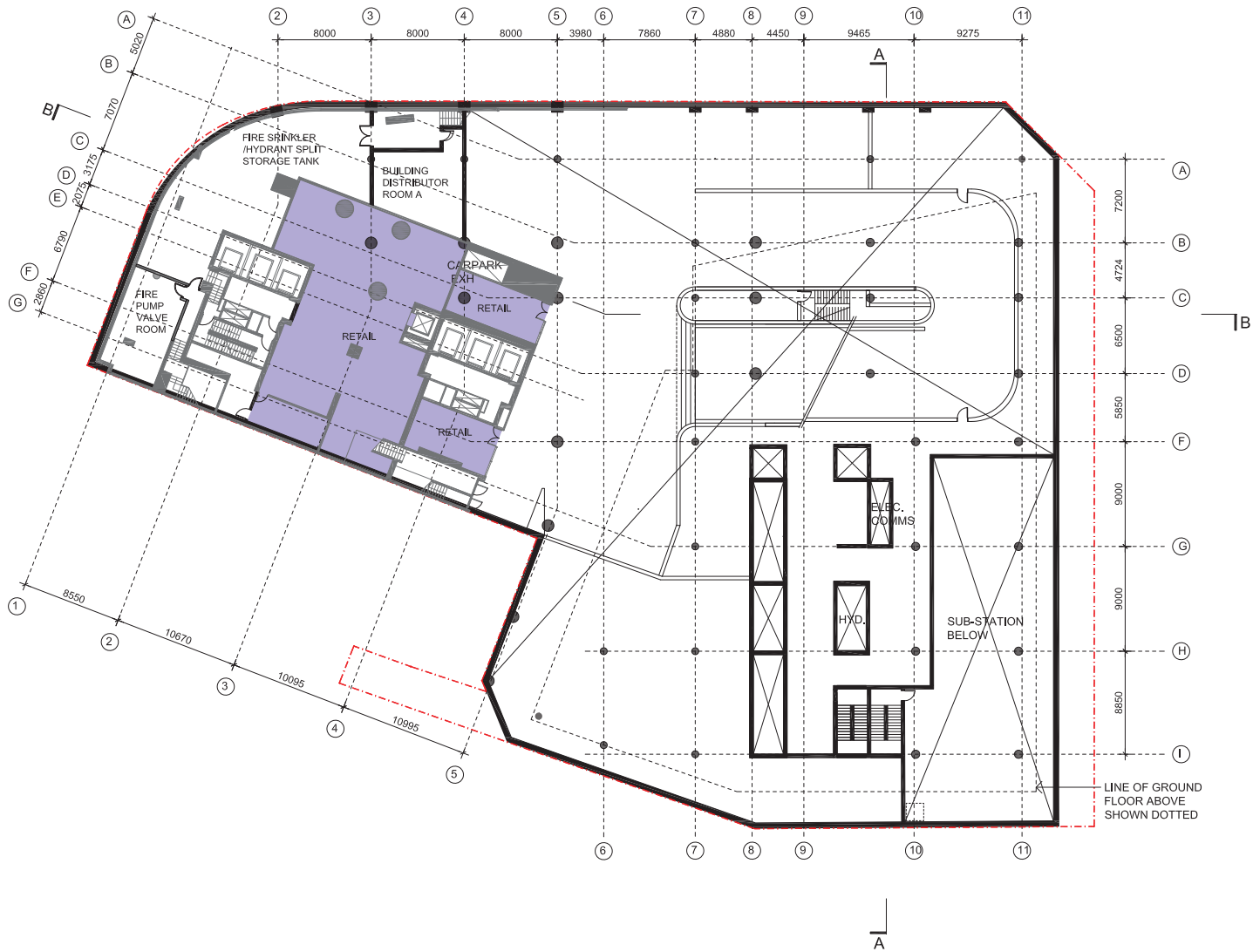
DEVELOPMENT APPLICATION

project no. CA 3054 drawing phase. SK drawing no. 05 rev. D


scale
1:200 @ A1, 1:400 @ A3



Cronepartners Pty Ltd
Level 2, 364 Kent Street,
Sydney, NSW 2000, Australia
Ph: +61 2 8295 5300
Fac: 61 2 8295 5301



notes
All dimensions and setbacks to be verified prior to commencement, variations or discrepancies to be notified to the architect.

quality assurance system
authorised by:

date: 09.06.2015

copyright
The copyright of this drawing together with any other documents prepared by crone partners architecture studios, pty ltd (cp) remains the property of cp. crone partners grants license for the use of this document for the purpose for which they are intended. This license is not transferable without the permission of cp.

architect
cronepartners
level 2, 364 kent street, sydney, nsw, 2000

client
万达集团 WANDA GROUP
WANDA ONE SYDNEY
1 Alfred Street, Sydney NSW 2000

no.	revision note	by.	date
A	PRELIMINARY ISSUE	SH	09.06.2015
B	ISSUE FOR CONSULTANT REVIEW	SH	16.06.2015
C	INDICATIVE PLANS FOR DA SUBMISSION	SH	22.06.2015

no.	revision note	by.	date

client
WANDA ONE SYDNEY PTY LTD
level 19, 1 Alfred St, Sydney, nsw, 2000, australia
Ph: +61 2 8233 2101 Fax: 61 2 8252 4540

structural engineer
ROBERT BRID GROUP
Level 11, 551 Castlereagh St, Sydney NSW 2000, Australia



hydraulic
AECOM
Level 21, 420 George Street, Sydney, NSW 2000, Australia

no.	revision note	by.	date

mechanical
AECOM
Level 21, 420 George Street, Sydney, NSW 2000, Australia

electrical
AECOM
Level 21, 420 George Street, Sydney, NSW 2000, Australia

scale
1:200 @ A1, 1:400 @ A3

project
SYDNEY ONE PROJECT
1 ALFRED STREET, 19-31 PITT STREET & 31A PITT STREET, SYDNEY NSW 2000

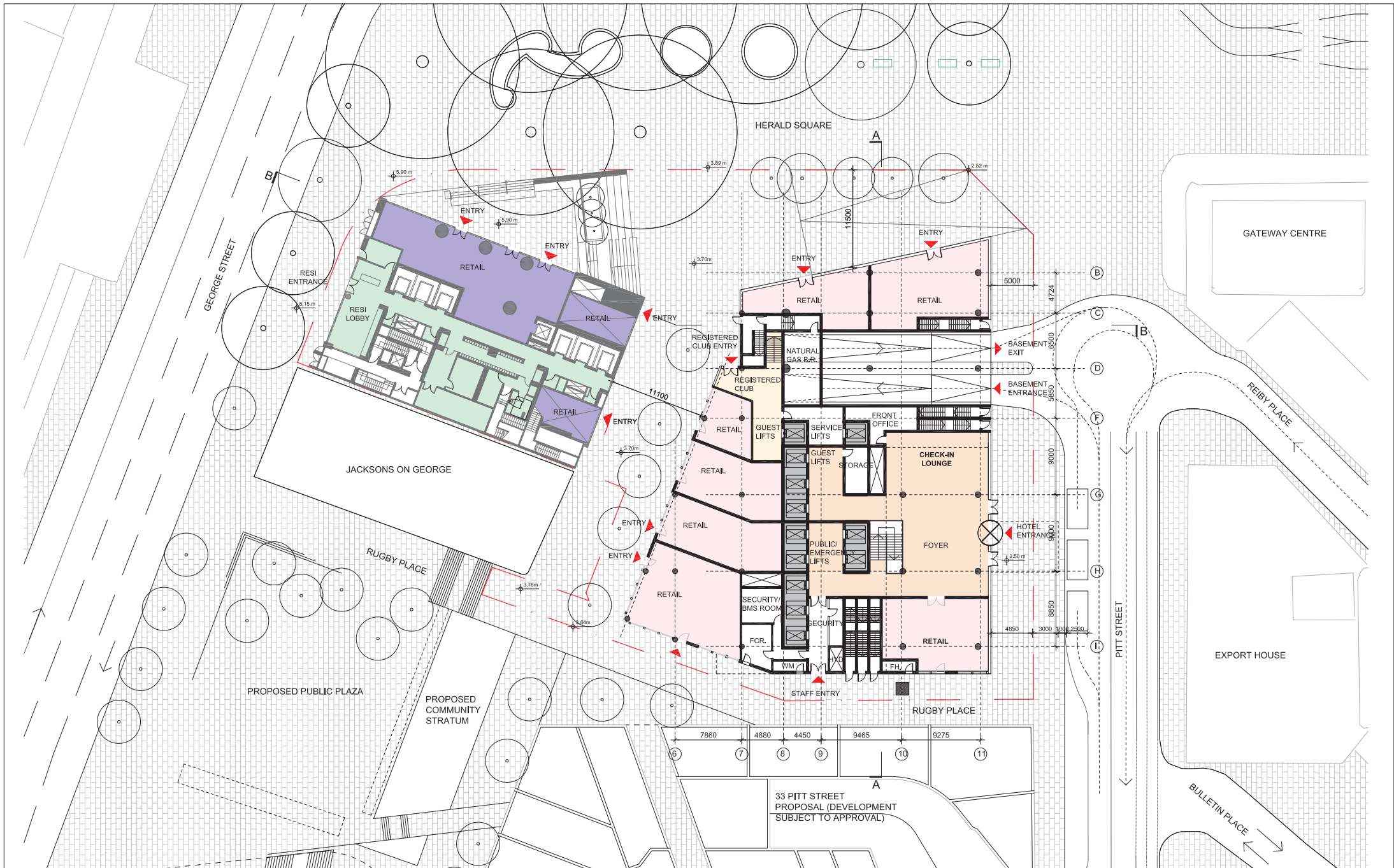
drawn: SH checked: BS date: 09.06.2015

cronepartners Pty Ltd
level 2, 364 kent street, sydney, nsw 2000, australia
Ph: +61 2 8235 5300 Fax: 61 2 8295 5301

drawing title
INDICATIVE DRAWING
HOTEL LOWER GROUND

DEVELOPMENT APPLICATION

project no. CA 3054 drawing phase. SK drawing no. 06 rev. C



notes
 All dimensions and setbacks to be verified prior to commencement, variations or discrepancies to be notified to the architect.

quality assurance system
 authorised by: *[Signature]*
 date: 09.06.2015

copyright
 The copyright of this drawing together with any other documents prepared by crone partners architecture studios, pty ltd (cp) remains the property of cp. crone partners grants license for the use of this document for the purpose for which they are intended. This license is not transferable without the permission of cp.

architect
cronepartners
 level 2, 366 kent street, sydney, nsw 2000

client
万达集团 WANDA GROUP
WANDA ONE SYDNEY
 1 Alfred Street, Sydney NSW 2000

no.	revision note	by.	date
A	PRELIMINARY ISSUE	SH	09.06.2015
B	PRELIMINARY ISSUE TO BCA	SH	11.06.2015
C	ISSUE FOR CONSULTANT REVIEW	SH	16.06.2015
D	INDICATIVE PLANS FOR DA SUBMISSION	SH	22.06.2015

client
 WANDA ONE SYDNEY PTY LTD
 Level 19, 1 Alfred St, Sydney, NSW 2000, Australia
 Ph: +61 2 8223 2101 Fax: 61 2 9252 4540

structural engineer
 AECOM
 Level 21, 420 George Street, Sydney, NSW 2000, Australia

mechanical
 AECOM
 Level 21, 420 George Street, Sydney, NSW 2000, Australia

electrical
 AECOM
 Level 21, 420 George Street, Sydney, NSW 2000, Australia

hydraulic
 AECOM
 Level 21, 420 George Street, Sydney, NSW 2000, Australia

no.	revision note	by.	date

project
 SYDNEY ONE PROJECT
 1 ALFRED STREET, 19-31 PITT STREET & 31A PITT STREET, SYDNEY NSW 2000

scale
 1:200 @ A1, 1:400 @ A3

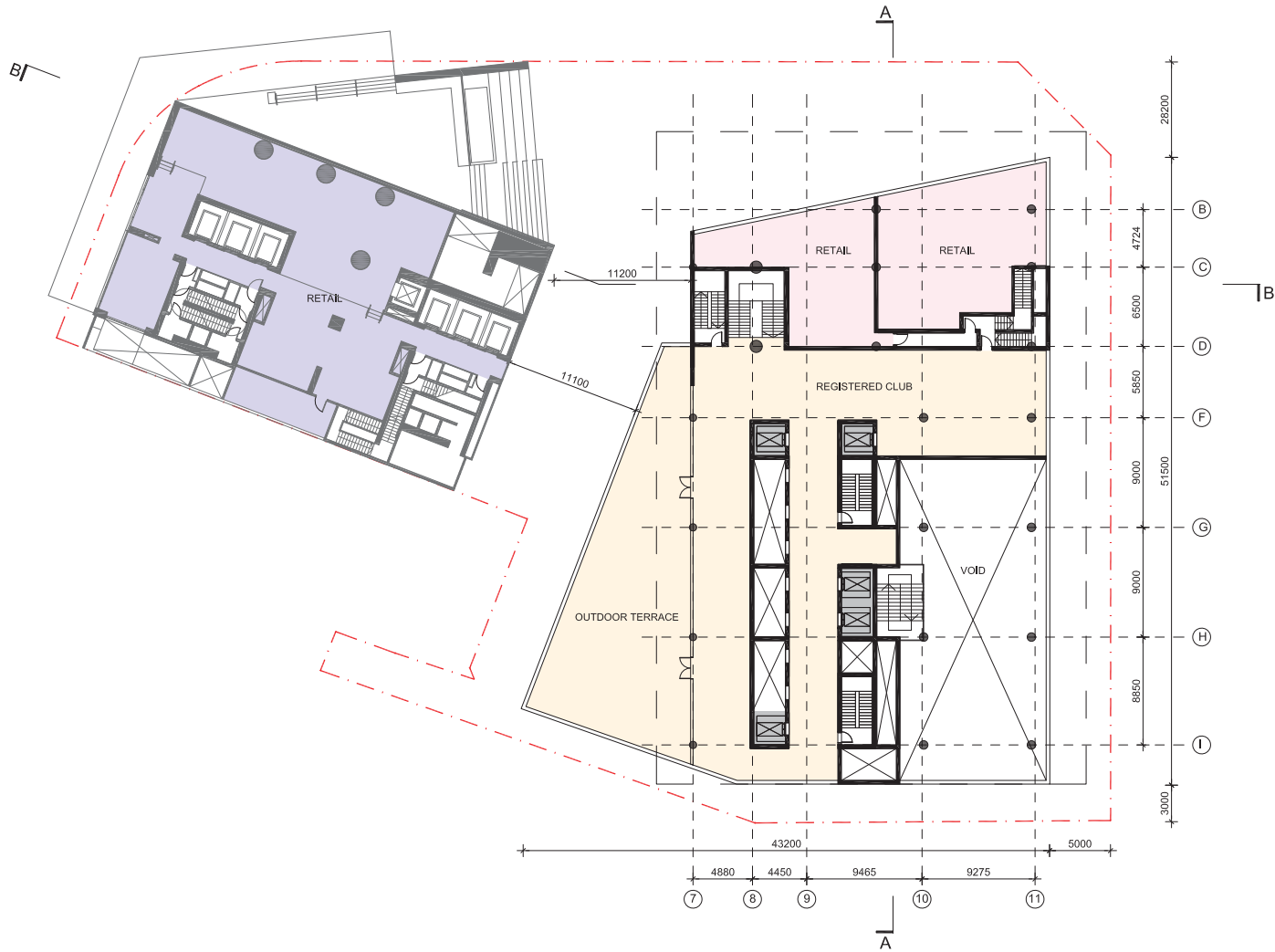
drawn: SH checked: BS date: 09.06.2015

drawing title
 INDICATIVE DRAWING
 HOTEL GROUND - LOBBY

DEVELOPMENT APPLICATION

project no. CA 3054 drawing phase. SK drawing no. 07 rev. E

architect
cronepartners
 level 2, 366 kent street, sydney, nsw 2000, australia
 Ph: +61 2 8225 5300 Fax: 61 2 8225 5301



notes
All dimensions and setbacks to be verified prior to commencement, variations or discrepancies to be notified to the architect.

quality assurance system
authorised by:

date: 09.06.2015

copyright
The copyright of this drawing together with any other documents prepared by crone partners architecture studios, pty ltd (cp) remains the property of cp. crone partners grants license for the use of this document for the purpose for which they are intended. The license is not transferable without the permission of cp.

architect
cronepartners
level 2, 364 kent street, sydney, nsw, 2000

client
万达集团 WANDA GROUP
WANDA ONE SYDNEY
1 Alfred Street, Sydney NSW 2000

no.	revision note	by.	date
A	PRELIMINARY ISSUE	SH	09.06.2015
B	PRELIMINARY ISSUE TO BCA	SH	11.06.2015
C	ISSUE FOR CONSULTANT REVIEW	SH	16.06.2015
D	INDICATIVE PLANS FOR DA SUBMISSION	SH	22.06.2015

structural engineer
ROBERT BRID GROUP
Level 11, 551 Castlereagh St, Sydney NSW 2000, Australia

hydraulic
AECOM
Level 21, 420 George Street, Sydney, NSW 2000, Australia

mechanical
AECOM
Level 21, 420 George Street, Sydney, NSW 2000, Australia

electrical
AECOM
Level 21, 420 George Street, Sydney, NSW 2000, Australia

scale
1:200 @ A1, 1:400 @ A3

project
SYDNEY ONE PROJECT
1 ALFRED STREET, 19-31 PITT STREET & 31A PITT STREET, SYDNEY NSW 2000

drawn: SH checked: BS date: 09.06.2015

cronepartners


drawing title
INDICATIVE DRAWING HOTEL LEVEL 1 - REGISTERED CLUB

DEVELOPMENT APPLICATION

project no. **CA 3054** drawing phase. **SK** drawing no. **08** rev **D**



notes
All dimensions and setbacks to be verified prior to commencement, variations or discrepancies to be notified to the architect.

quality assurance system
authorised by: 
date: 09.06.2015

copyright
The copyright of this drawing together with any other documents prepared by crone partners architecture studios, pty ltd (cp) remains the property of cp. crone partners grants license for the use of this document for the purpose for which they are intended. This license is not transferable without the permission of cp.

architect
cronepartners
level 2, 364 kent street, sydney, nsw, 2000

client
万达集团 WANDA GROUP
WANDA ONE SYDNEY
1 Alfred Street, Sydney NSW 2000

no.	revision note	by.	date
A	PRELIMINARY ISSUE	SH	09.06.2015
B	PRELIMINARY ISSUE TO BCA	SH	11.06.2015
C	ISSUE FOR CONSULTANT REVIEW	SH	16.06.2015
D	INDICATIVE PLANS FOR DA SUBMISSION	SH	22.06.2015

client
WANDA ONE SYDNEY PTY LTD
Level 19, 1 Alfred St, Sydney, nsw, 2000, australia
Ph: +61 2 8233 2101 Fax: 61 2 8252 4540



structural engineer
ROBERT BRID GROUP
Level 11, 55 Castlereagh St, Sydney NSW 2000, Australia

hydraulic
AECOM
Level 21, 420 George Street, Sydney, NSW 2000, Australia

mechanical
AECOM
Level 21, 420 George Street, Sydney, NSW 2000, Australia

electrical
AECOM
Level 21, 420 George Street, Sydney, NSW 2000, Australia

scale
1:200 @ A1, 1:400 @ A3

project
SYDNEY ONE PROJECT
1 ALFRED STREET, 19-31 PITT STREET & 31A PITT STREET, SYDNEY NSW 2000

drawn: SH checked: BS date: 09.06.2015

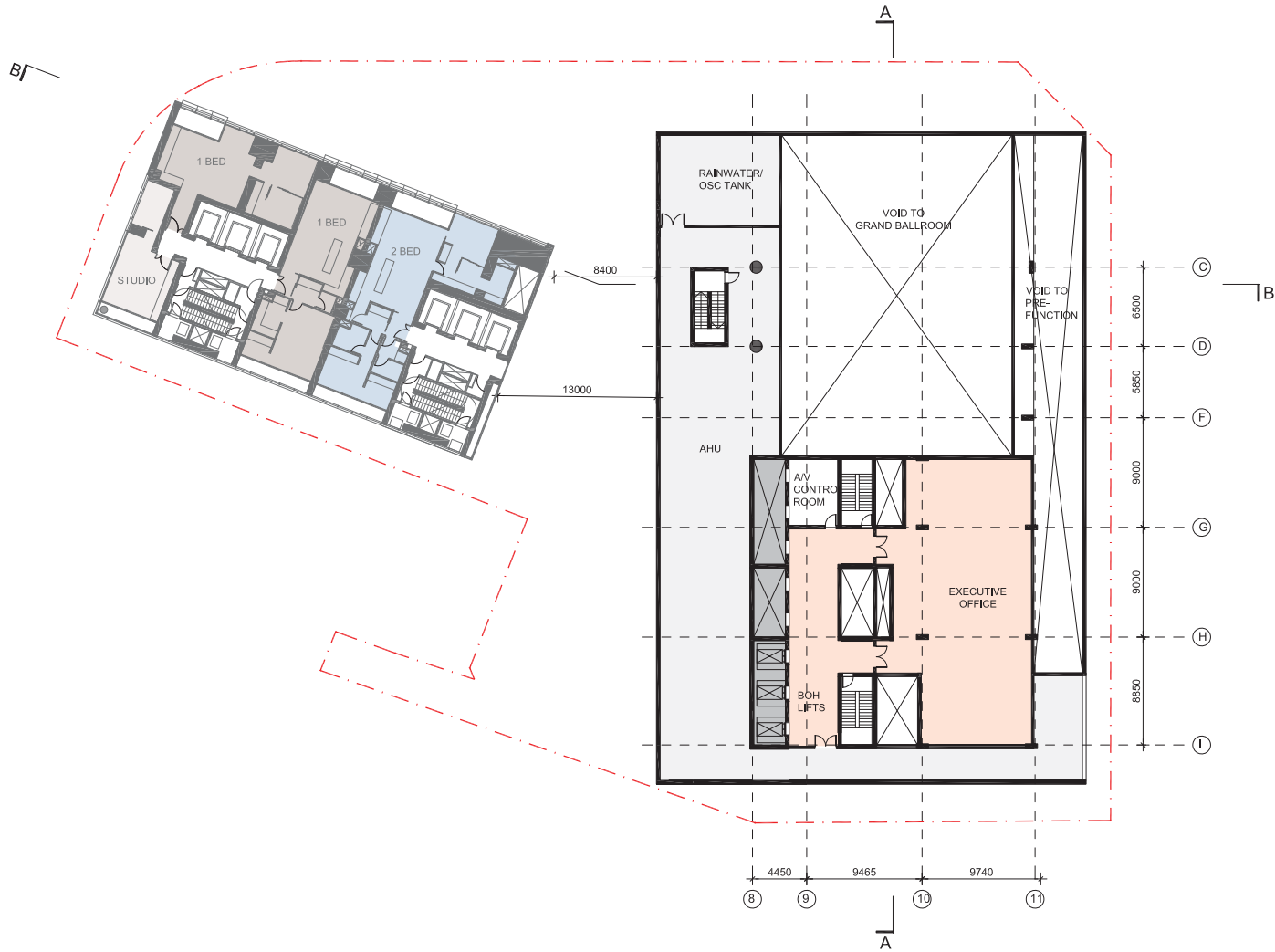
cronepartners

drawing title
INDICATIVE DRAWING
HOTEL LEVEL 2 - BALLROOM


DEVELOPMENT APPLICATION

CA 3054 SK 09 D

project no. drawing phase. drawing no. rev



notes
All dimensions and setbacks to be verified prior to commencement, variations or discrepancies to be notified to the architect.

quality assurance system
authorised by: 
date: 09.06.2015

copyright
The copyright of this drawing together with any other documents prepared by crone partners architecture studios, pty ltd (cp) remains the property of cp. crone partners grants license for the use of this document for the purpose for which they are intended. The license is not transferable without the permission of cp.

architect
cronepartners
level 2, 364 kent street, sydney, nsw, 2000

client
万达集团 WANDA GROUP
WANDA ONE SYDNEY
1 Alfred Street, Sydney NSW 2000

no.	revision note	by.	date
A	PRELIMINARY ISSUE	SH	09.06.2015
B	PRELIMINARY ISSUE TO BCA	SH	11.06.2015
C	ISSUE FOR CONSULTANT REVIEW	SH	16.06.2015
D	INDICATIVE PLANS FOR DA SUBMISSION	SH	22.06.2015

client
WANDA ONE SYDNEY PTY LTD
Level 19, 1 Alfred St, Sydney, nsw, 2000, australia
Ph: +61 2 8223 2101 Fax: 61 2 8252 4540


structural engineer
ROBERT BRID GROUP
Level 11, 551 Castlereagh St, Sydney NSW 2000, Australia

hydraulic
AECOM
Level 21, 420 George Street, Sydney, NSW 2000, Australia

mechanical
AECOM
Level 21, 420 George Street, Sydney, NSW 2000, Australia

electrical
AECOM
Level 21, 420 George Street, Sydney, NSW 2000, Australia

scale
1:200 @ A1, 1:400 @ A3



project
SYDNEY ONE PROJECT
1 ALFRED STREET, 19-31 PITT STREET & 31A PITT STREET, SYDNEY NSW 2000

drawn: SH checked: BS date: 09.06.2015

cronepartners

drawing title
INDICATIVE DRAWING
HOTEL LEVEL 2 MEZZANINE

DEVELOPMENT APPLICATION

CA 3054 SK 10 D

project no. drawing phase. drawing no. rev