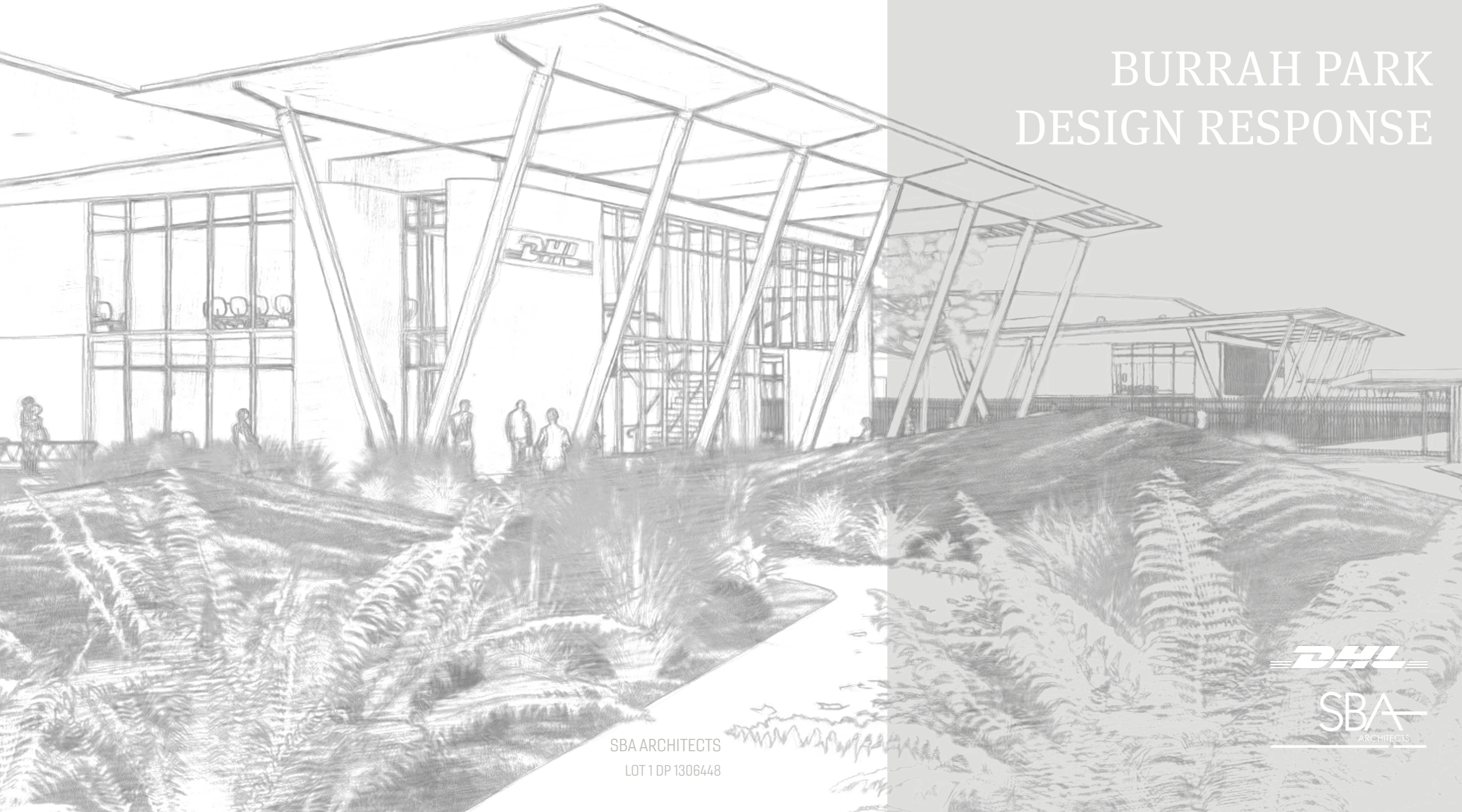


# BADGERYS CREEK

BURRAH PARK  
DESIGN RESPONSE



SBA ARCHITECTS  
LOT 1 DP 1306448





## INTRODUCTION

To ensure a cohesive and consistent design approach across the detailed design of the landscape, public spaces, and buildings throughout Burrah Park, a Design Excellence Strategy was developed. This strategy establishes clear frameworks and guiding principles to maintain uniformity and high standards across the development. This report demonstrates how the project's design aligns with and adheres to these established plans through three core strategies: Connection with Country, Built Form, and Landscape. By integrating these elements, the development not only respects the cultural and natural heritage of the area but also fosters a harmonious and visually unified environment that enhances the overall user experience.



# CONTENTS

## **PART 1 - DESIGNING WITH COUNTRY** 01

Introduction	2
First Nations Consultation	3
Site Analysis	4
Built Form	5
Landscape	6

## **PART 2 - BUILT FORM** 07

Office Composition	08
Architectural Response	09
Office 3D Visualisation	10
Warehouse Facade	11
Warehouse 3D Visualisation	12
Examples Material Palette	13
Proposed Material Palette	14

## **PART 3 - LANDSCAPE** 15

Landscape Principles & Response	16
Outdoor Amenity & Scale	17

# PART 1

## DESIGNING WITH COUNTRY



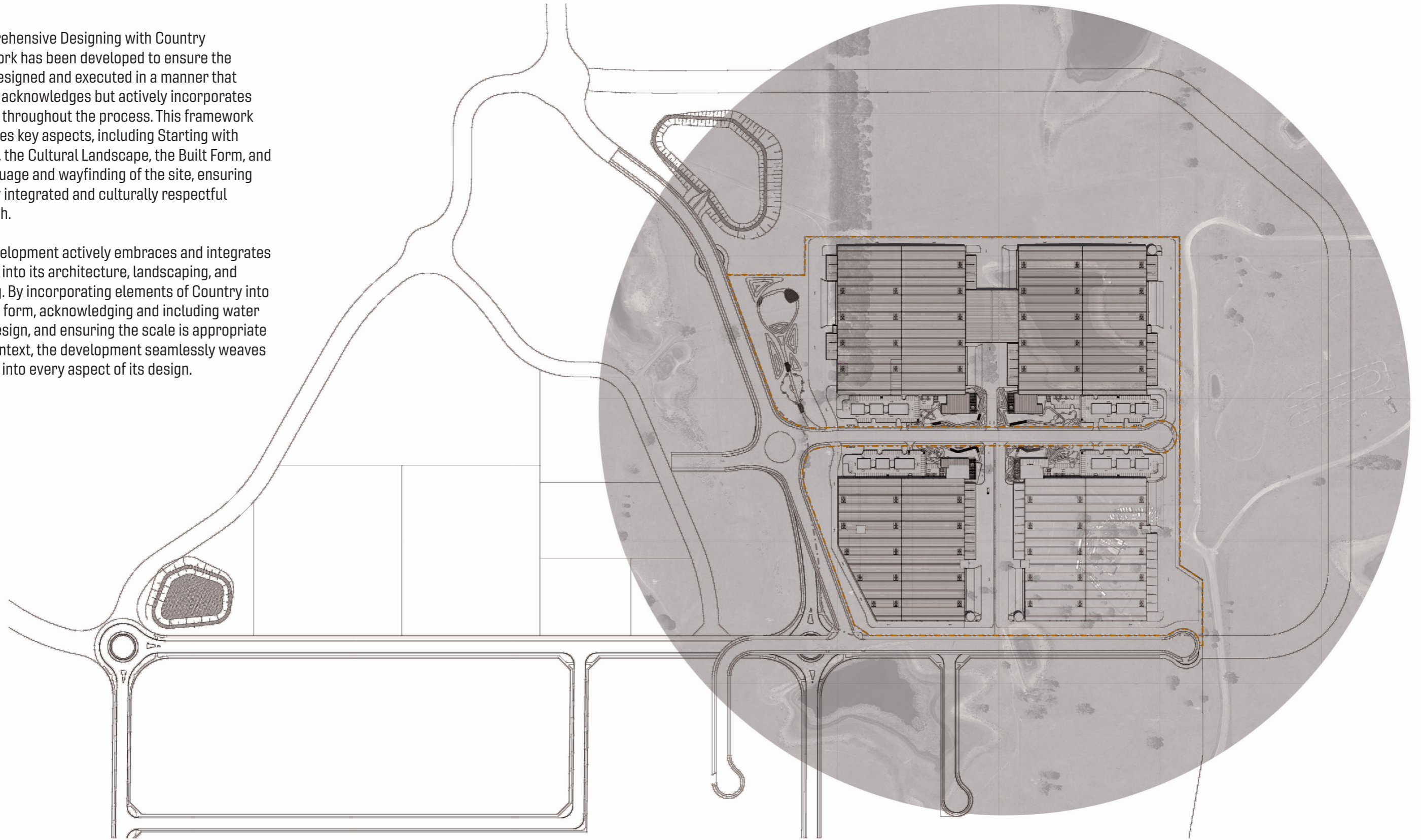
**DHL**

**SBA**  
ARCHITECTS

## PROJECT FRAMEWORK

A comprehensive Designing with Country framework has been developed to ensure the site is designed and executed in a manner that not only acknowledges but actively incorporates Country throughout the process. This framework addresses key aspects, including Starting with Country, the Cultural Landscape, the Built Form, and the language and wayfinding of the site, ensuring a deeply integrated and culturally respectful approach.

This development actively embraces and integrates Country into its architecture, landscaping, and planning. By incorporating elements of Country into the built form, acknowledging and including water in the design, and ensuring the scale is appropriate to its context, the development seamlessly weaves Country into every aspect of its design.



## FIRST NATIONS CONSULTANT

Yerrabingin was engaged as the First Nations consultant for the integration of First Nations principles into the built and landscape concept. They collaborated consistently throughout the entire project and were able to provide clear initiatives and feedback that progressed the concept towards a high quality and locally appropriate design.

### ARCHITECTURE

“ The design principles are well conceived and integrated well. Precedents beautifully show how the building can blend into the natural environment. Office concept diagrams are great because they show the thought process with the principles. Great natural light into office buildings. ”

How rainwater will be treated on-site? Will the water be collected and reused?

Rainwater and other sustainability measure will be used to reduce the consumption of non-renewable sources, see page 46 for details.

The brown facade seems unconnected, potential to bring an ecotonal pallet reflecting ecology and geology.

A new dynamic facade has been developed with an organic pattern that utilise less bold finishes that aims to blend and reflect the landscape beyond, see page 47 & 48 for details.

Way-finding along path using environmental stencils, inlays or concrete engraving

Key signage and materials have been used as way-finding strategies to create easy identification and travel to office spaces. Key natural elements like water elements and trees have been utilised as recognisable gathering points for each individual space, see page 33, 37, 41, & 44 for details.

### LANDSCAPE ARCHITECTURE

“ Mounds are nice to block views of roads and enclosed, (great for noise pollution from cars). Great tree canopy coverage. ”

Would be great to see how the principles have guided the design, looks like early draft and Site Image are aware of a number of references listed below from other collaborations with Yerrabingin.

Landscape principles were extracted from the existing natural topography and represented through conceptual massing diagrams and sketches, see pages 30-34 for details.

Refer to previous plant schedules. Endemic / native species, seasonality considered, bush tucker / medicinal species, pollinator beacons to attract insects.

The use of native flora species was gathered through collaboration with Yerrabingin and has been utilised into the landscape development, see pages 16 & 36 for details.

Recycled materials (recommended), natural stone / local geology of area in seating, rammed earth, recycled timbers, crushed sandstone / granites (also creates a sensory experience as you walk along)

A selection of raw, rough and earthy toned materials were used both on the facades and the ground plane to reflect the natural context of country, see pages 47-57 for details

### SITE ANALYSIS

“ Masterplan; elements of Country diagrammed over plan. Which elements are expressed here? For example, open grass space (Sky), Water basin (Water Country), natural seating materials (deep Country), Planting endemic species (Non-Human Kin) which also creates habitat for local animals, spaces for people (Move with Country) ”

Describe how the site sits within Country; in relation to the creeks and surrounding areas

The site was researched in terms of its water, topography and wildlife to establish the Country the site sits within, see pages 13 & 16 for details.

Overlay iconography onto zoom-in plans to show specific connecting with Country activation.

Both the office and landscape spaces have been designed through extracting key principles from natural elements to create a local responsive concept, see pages 22 & 34 for details.

Open grass could be an event space for community (NAIDOC week for example), educational plaques about plants / area (QR codes for examples), foraging bush tucker species, sensory experiences, weaving species, path could tell a story specific to area, educate users on story of area

A variety of landscape areas have been introduced into the office amenity to allow for a large range of events and activities to take place, see pages 35, 36, 41, & 43 for details.

Sitting around water would be nice, movement of water would be nice to hear the sounds of water, could move water around the open space (blind creek bed)

A water and re-vegetation zone has been placed at every office point to allow for a diverse ecosystem to thrive as well as a recognisable meeting point for office amenity, see pages 33, 35, 36, & 53 for details.

# DESIGNING WITH COUNTRY

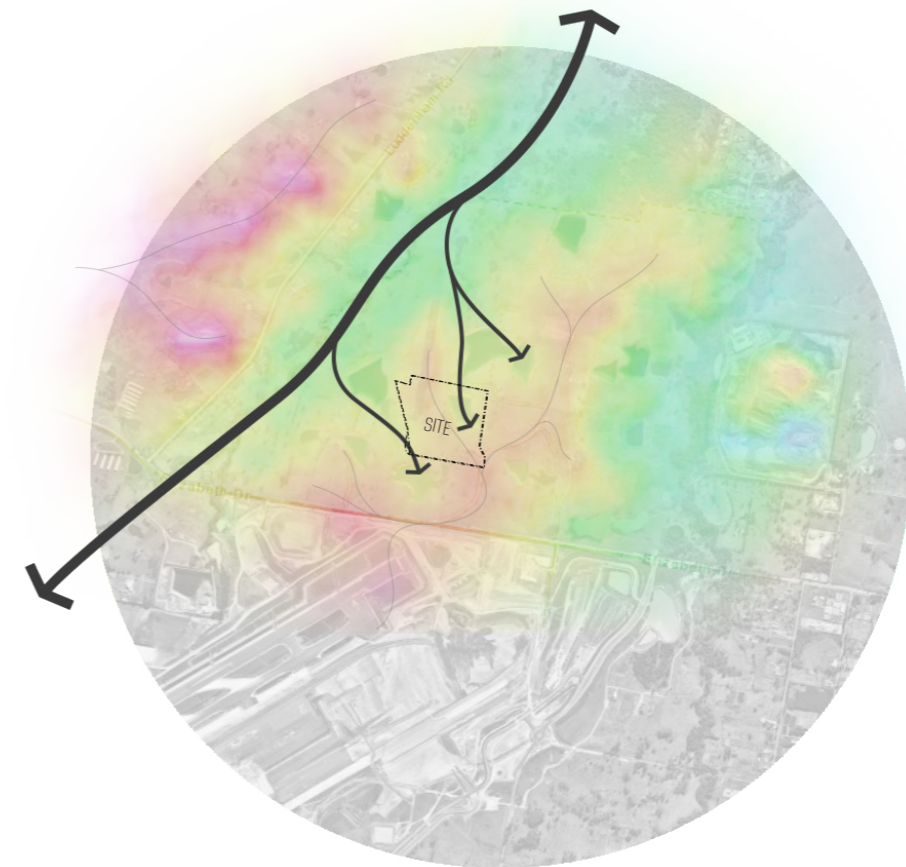


## PROJECT RESPONSE

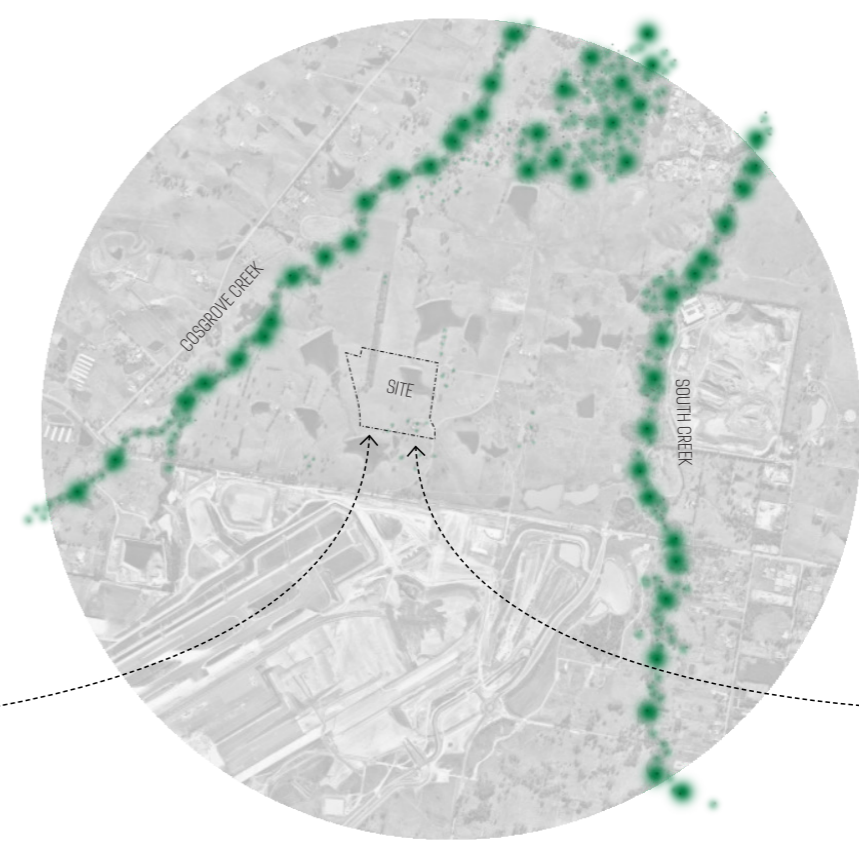
Following the consultation, a thorough analysis of the site was undertaken to understand its connection with Country. This analysis examined the water bodies, topography, and vegetation, focusing on how these natural elements could be thoughtfully incorporated into the design. The resulting plan includes mounded landforms within the landscape scheme, water features, and efforts to preserve and enhance native species, fostering a setting that respects and integrates the site's natural characteristics.



WATER BODIES & COURSE



TOPOGRAPHY & LANDSCAPE



VEGETATION & WILDLIFE

-  Allocastraria glareicola
-  Dillwynia tenuifolia
-  Micromyrtus leptocalyx
-  Pultenaea parviflora
-  Angophora subvelutina

-  Australian Black Swan
-  Glossy Black Cockatoo
-  Eastern Grey Kangaroo
-  Regent Honeyeater
-  Large-eared Pied Bat

# DESIGNING WITH COUNTRY



## PROJECT RESPONSE

The building concept was derived from looking at key elements in nature found regularly within the Western Parklands area. This form of extracting principles from the landscapes creates a high-quality design that responds appropriately to the Badgery's Creek context.

CARVED FORM



ELEGANT CONNECTIONS



FLOATING CANOPY



FILTERED LIGHT



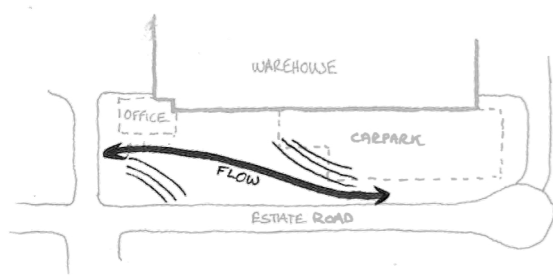
DYNAMIC MOVEMENT



## PROJECT RESPONSE

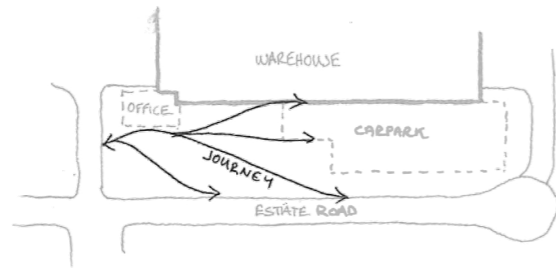
The landscape aims to reflect the existing natural terrain by recreating the forms and movements, and representing them on to smaller scale in relation to the office. This allows for a more real and meaningful transition from the natural landscape into the built environment.

NATURAL FLOW



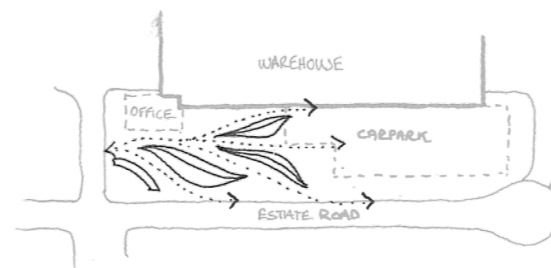
The terrain defines the natural flow of the landscape movement

JOURNEY



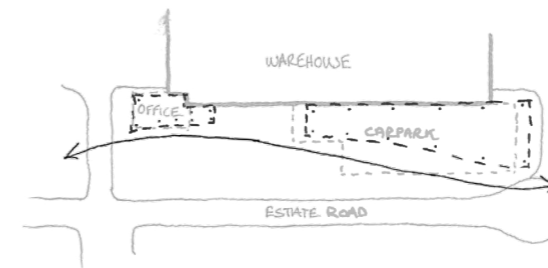
The landscape creates a journey and experience as you move through the space

RISING LANDSCAPE



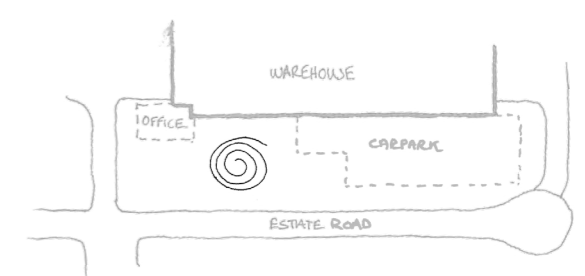
The rising landscape allows the user to be immersed in the surrounding vegetation

UNITING SPACE



The landscape unites and integrates the spaces beyond the built form

SIGNIFICANCE OF WATER



The water creates a central gathering and meeting place for all life.

# PART 2

## BUILT FORM



Materiality  
Facade Articulation  
Office Composition

**DHL**

**SBA**  
ARCHITECTS

# BUILT FORM



## OFFICE COMPOSITION

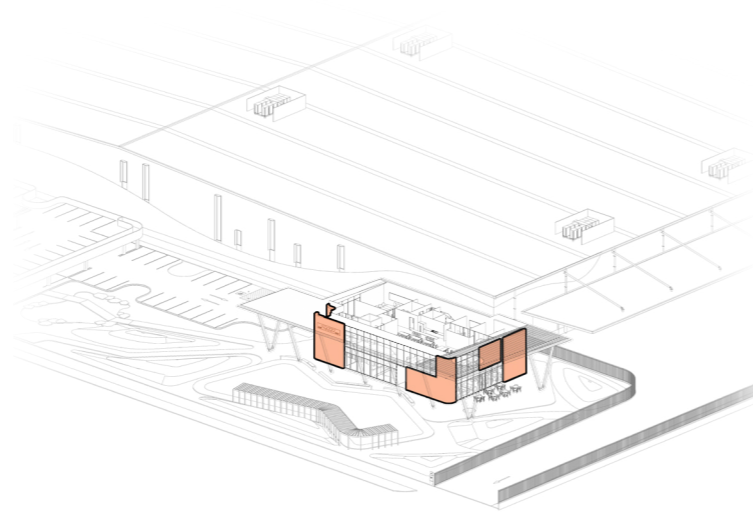
In the excellence strategy it is specified that offices throughout the precinct are to be separated from warehouse pads to enhance pedestrian access, improve visual connectivity for wayfinding, and create a more consistent ground level between buildings and boundaries. Office interfaces will embrace and celebrate elements of Country by incorporating easily accessible outdoor areas that feature native plants, shaded spaces, and earthy tones. These areas will include rain chains and rain gardens, with finishes such as timber and rammed earth, reflecting the deep, natural tones of the landscape.



(Image source: Burrah Park, Urban Design Report)

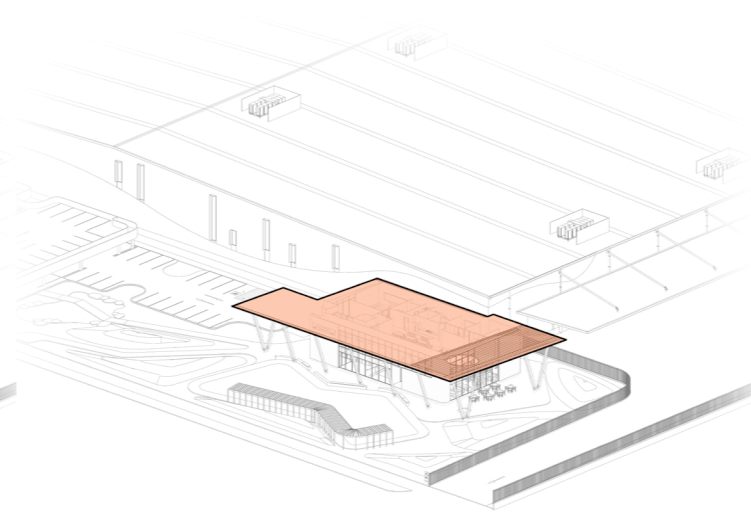
## PROPOSED OFFICE COMPOSITION

The office concept design underwent several iterations and reviews, emphasising the built form's presence and impact within the environment. The concept aimed to embody key principles set by the excellence strategy and inspired by the natural surroundings, including visual integration with the landscape, enhanced pedestrian access, seamless connection to outdoor spaces, intuitive wayfinding, and the creation of high-quality landscaped areas.



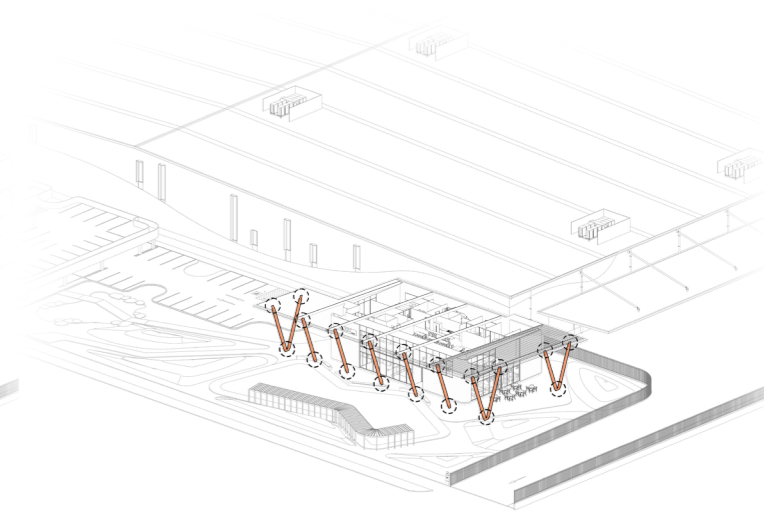
### CARVED FORM

The carved space out of the base volume allows for the building to be integrated more with its surrounding space.



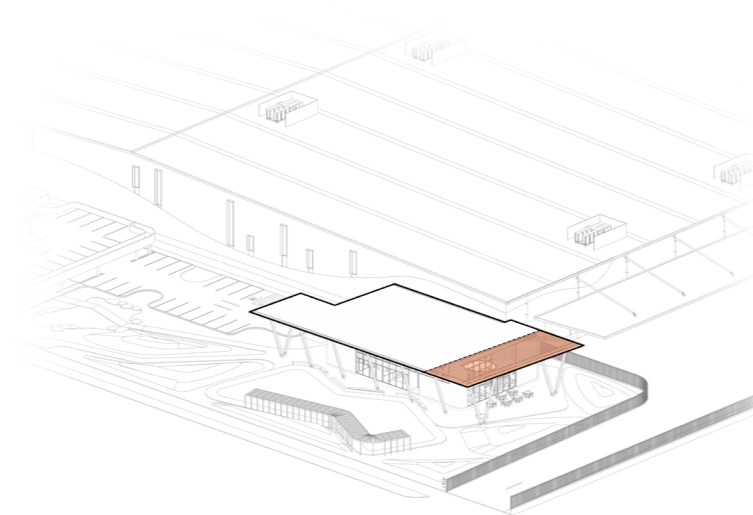
### FLOATING CANOPY

The roof is lifted above the mass through a recessed layer, it also exposes the structure to give a sense of a lightweight floating canopy.



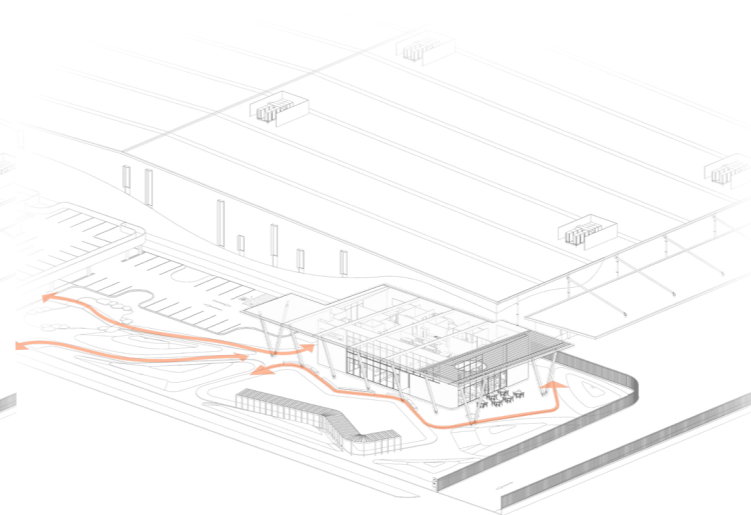
### ELEGANT CONNECTIONS

The column members are connected by elegant slender plates to replicate the soft natural elements found throughout the Badgerys Creek landscape.



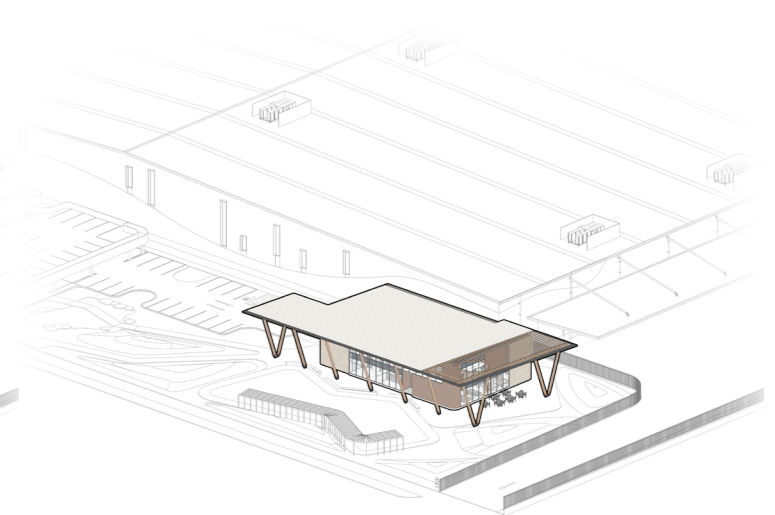
### FILTERED LIGHT

The connection to landscape is furthered by openings and perforations in the roof to allow for filtered light to enter from above and landscape to erupt from below.



### DYNAMIC FORM

The dynamic movement of the environment is woven in-between the columns to create an overlapping and connecting space.



### FINAL MASSING

The final massing uses rough and raw textures with warm natural tones to further instill it within the local context

# BUILT FORM



## 3D VISUALISATION



Example Perspective 1



Example Perspective 2

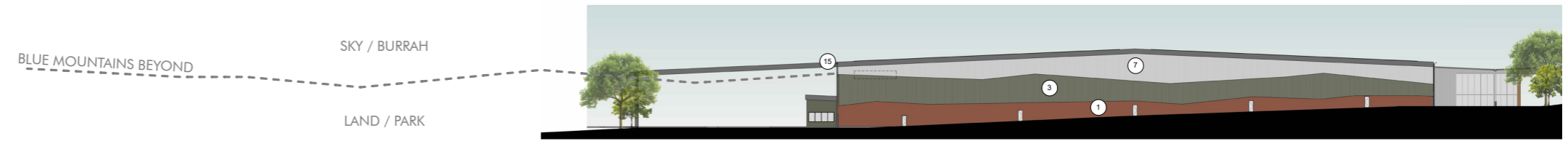


Proposed Perspective

## FACADE ELEVATIONS

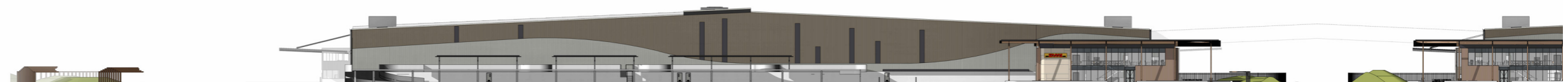
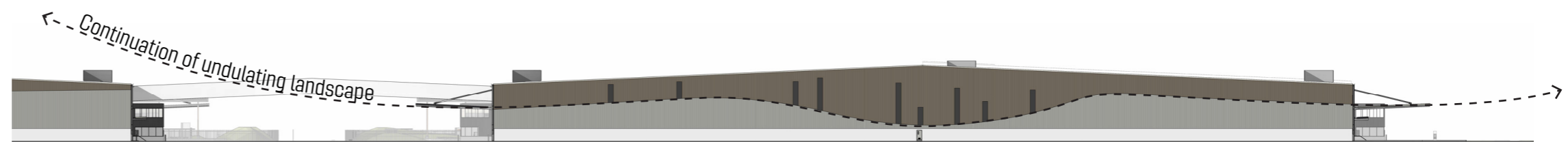
To align with the precinct name, Burrah Park, it has been requested that warehouse facades reflect the surrounding sky and land. The facades should feature dark earthy tones on the lower portions, transitioning to lighter tones above, mimicking the horizon lines created by the undulating hills, tree tops, and the distant Blue Mountains. This design approach is especially critical for facades facing Elizabeth Drive and the M12, ensuring a seamless integration with the natural landscape.

The warehouse facade of this development features a curved pattern that compliments the built spaces below. This dynamic, organic element softens the building's length, creating a more fluid and visually engaging design. The curve also symbolically represents the undulating landscape of Badgerys Creek, reflecting the natural contours of the land and Country.



(Image source: Burrah Park, Urban Design Report)

EXAMPLE WAREHOUSE FACADE



PROPOSED DEVELOPMENT FACADE

# BUILT FORM



3D VISUALISATION



Aerial view of the warehouse facade and landscape area

# BUILT FORM



## EXAMPLE MATERIAL SELECTION

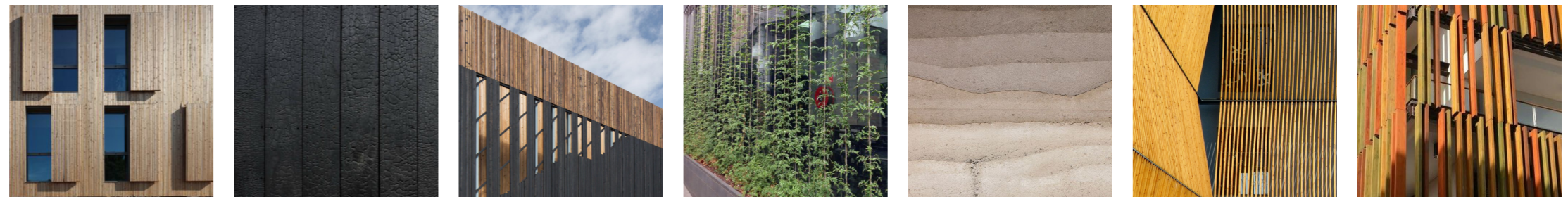
A sample material palette has been developed as a reference, incorporating elements that reflect the themes of moving with Country, water, deep Country, sky Country, and wind Country. This palette incorporates tonal colours, metal cladding, tinted glazing, translucent components, mesh and natural materials.



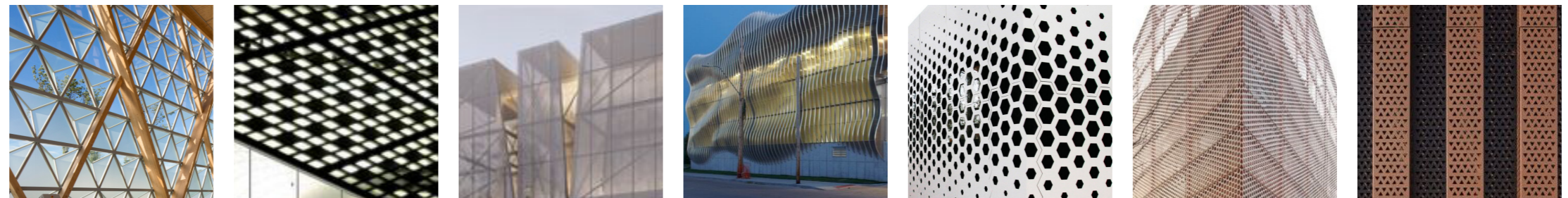
Translucency



Panels



Natural Materials



Texture and Screens

(Image source: Burrah Park, Urban Design Report)

# BUILT FORM



## PROPOSED MATERIAL SELECTION

The material selection, including engineered timbers, two-toned metal cladding, tinted glazing, timber panel soffits, and pre-cast concrete finishes, remains consistent with the example palette. The use of natural tones and raw, textured materials establishes a strong connection between the building and the natural landscape of Badgerys Creek. This approach not only references the surrounding environment but also actively integrates it into the design, ensuring harmony with the landscape.



1. Engineered timber beams and columns
2. Raw ceramic tile finish
3. Slender powder coated steel connections
4. Two-toned profile metal cladding
5. Weathered timber wall cladding
6. Lightly tinted glazing
7. Pre-cast concrete natural finish
8. Timber paneled soffit

# PART 3

## LANDSCAPE & SUSTAINABILITY

Pergola walkway  
running around the  
outside path of the open  
lawn area

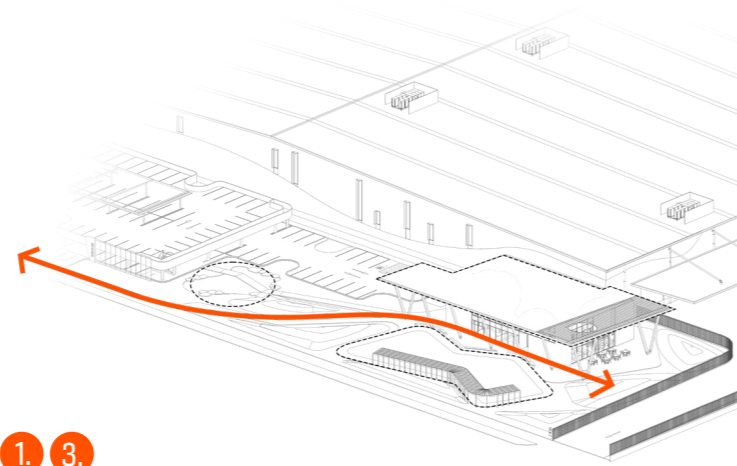


## LANDSCAPE PRINCIPLES AND RESPONSE

The landscaping framework outlines three key components: Landscape Nodes, Landscape Typologies, and Active Network Types.

1. Landscape Nodes include Wayfinding, Intersection, and Meeting Places, designed to enhance navigation, interaction, and community engagement.
2. Landscape Typologies refer to essential site areas such as green corridors, open parklands, and riparian zones, focusing on preserving and integrating natural features.
3. Active Network Types encompass elements like boundaries, roadways, and pedestrian pathways, ensuring seamless connectivity and access throughout the site.

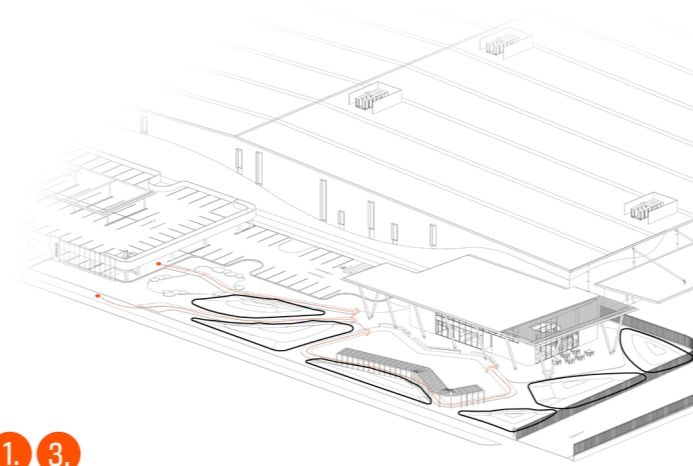
The proposed development integrates landscape nodes through the thoughtful planning of movement across the site, emphasising natural flow, purposeful journeys, and designated meeting spaces. Rising mounds are incorporated to reflect the undulating terrain of Badgerys Creek, while also creating informal gathering areas. Water features are included to acknowledge the site's connection to this vital element. The design carefully considers pedestrian pathways, ensuring they connect seamlessly with the broader site and using the landscape to guide and enhance the flow of movement throughout the area.



1. 3.

### NATURAL FLOW

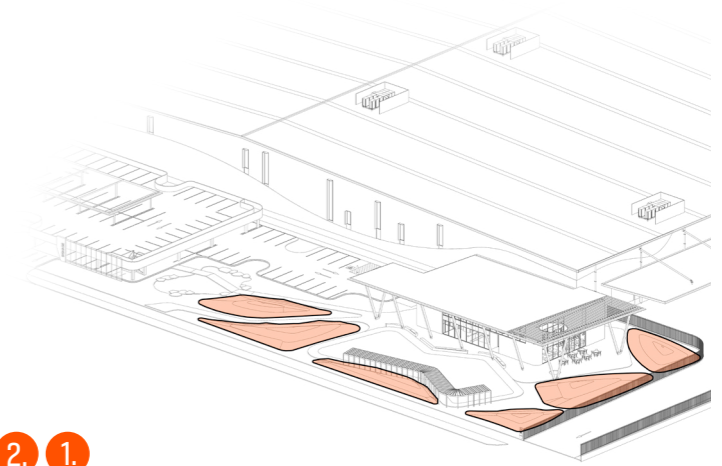
The landscape is defined by the natural flow and movement of people from the street and carpark towards the office.



1. 3.

### THE JOURNEY

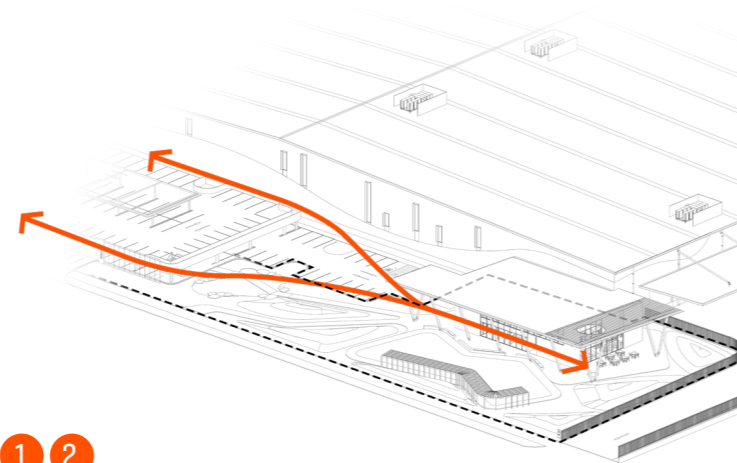
The winding paths through the rising mounds create an experiential journey for the occupants moving through the landscape.



2. 1.

### RISING LANDSCAPE

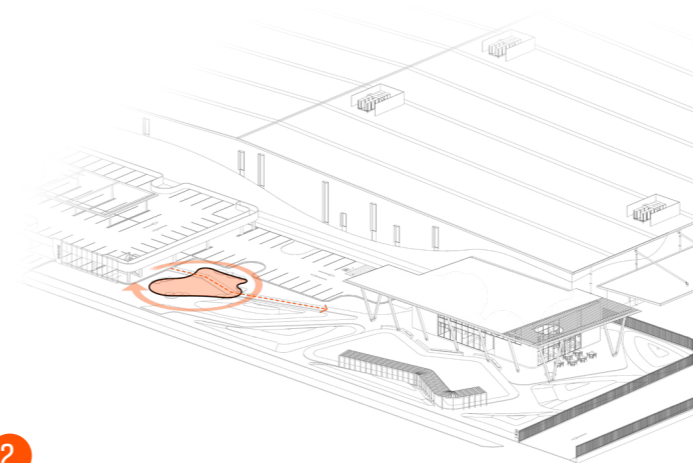
The rising mounds create a sheltered landscape that is symbolic of the undulating terrain of Badgerys creek, and defines spaces for gathering and meeting.



1. 2.

### UNITING SPACE

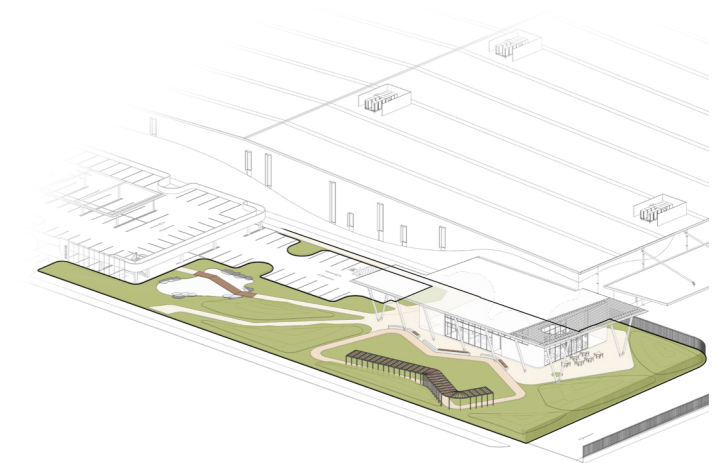
The outdoor area creates a central uniting space with sheltered paths and soft native landscaping for people to move through and gather.



2.

### SIGNIFICANCE OF WATER

The addition of water into the landscape adds diversity in the small ecosystem and recognises the importance of it within First Nations culture.



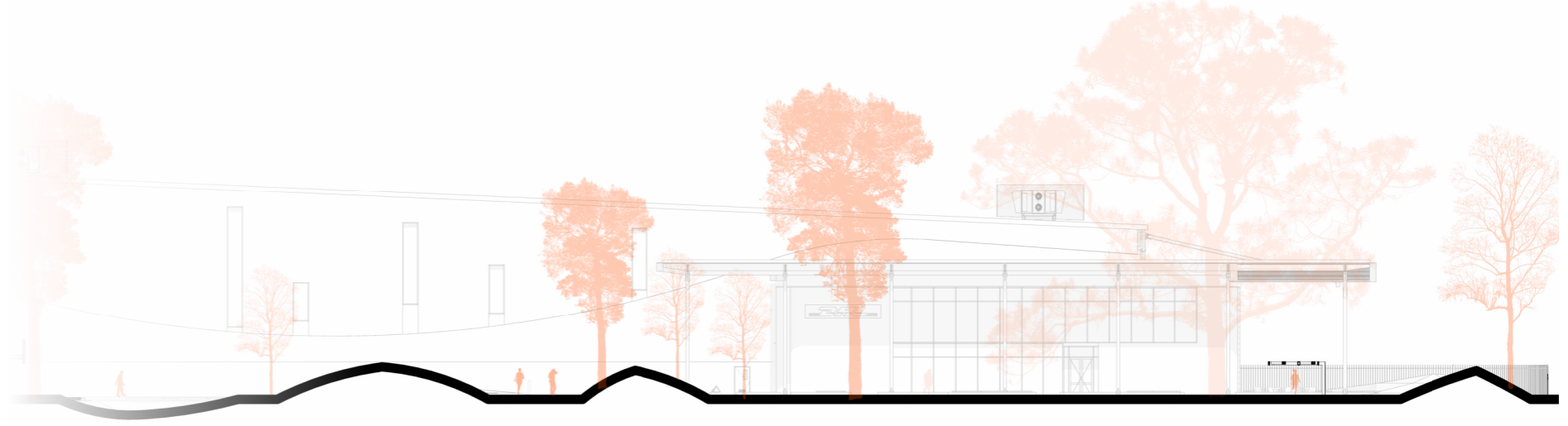
### FINAL MASSING

The final landscape form will use a combination of loose layered materials to create an overlapping ground plane that further blurs the line between indoor and outdoor space.

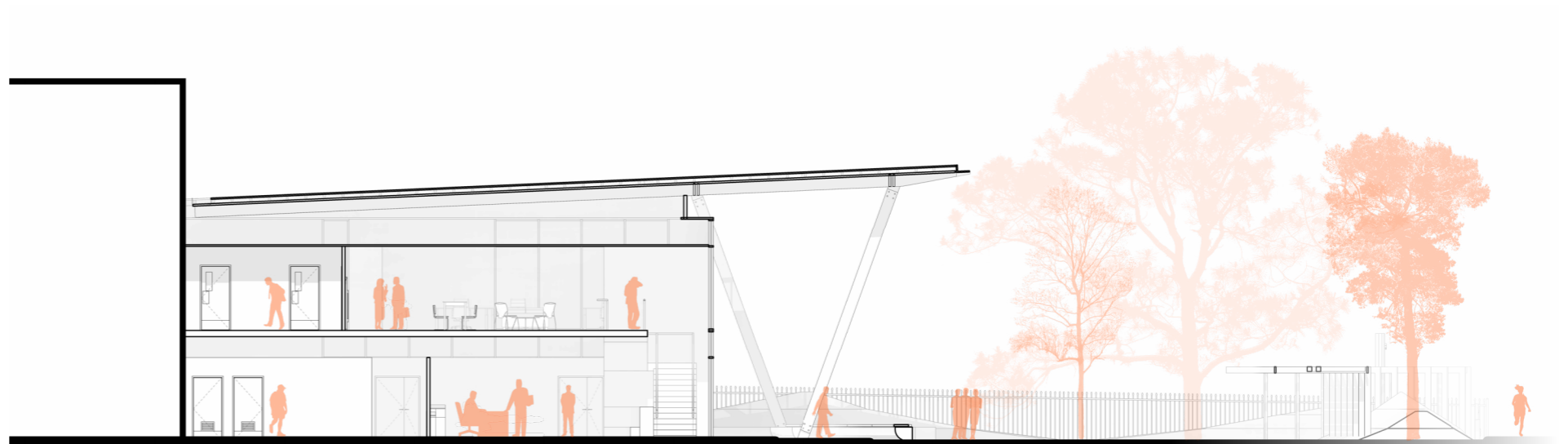
## OUTDOOR AMENITY AND SCALE

The design strategy focuses on reducing the warehouse scale to better align with the existing ground levels, ensuring a more cohesive and appropriate street presence. Additionally, office interfaces should incorporate easily accessible outdoor areas that foster a strong connection to Country.

In this proposal, the mounded landscape offers a gradual approach from the street, complemented by low-level vegetation that establishes a balanced relationship between the warehouse and human scale. Additionally, the floating canopy extends over the undulating terrain, creating a welcoming entryway and enhancing the overall presence of the building.



LANDSCAPE SECTION  
1:400



OFFICE SECTION  
1:400