

University of Sydney Faculty of Arts & Social Sciences

Design Report

For: State Significant Development Application

Date: 20 June 2016



Architectus Group Pty Ltd
ABN 90 131 245 684

Adelaide
Lower Ground Floor
57 Wyatt Street
Adelaide SA 5000
Australia
T +61 8 8427 7300
adelaide@architectus.com.au

Auckland
Level 2, 3–13 Shortland Street,
Auckland 1010
New Zealand
T +64 9 307 5970
F +64 9 307 5972
auckland@architectus.co.nz

Brisbane
Level 2, 79 Adelaide Street
Brisbane QLD 4000
Australia
T +61 7 3221 6077
F +61 7 3221 1645
brisbane@architectus.com.au

Christchurch
124 Peterborough Street
Christchurch 8140
New Zealand
T +64 3 377 7086
christchurch@architectus.co.nz

Melbourne
Level 7, 250 Victoria Parade
East Melbourne VIC 3002
Australia
T +61 3 9429 5733
F +61 3 9429 8480
melbourne@architectus.com.au

Sydney
Level 18, MLC Centre
19 Martin Place
Sydney NSW 2000
Australia
T +61 2 8252 8400
F +61 2 8252 8600
sydney@architectus.com.au

architectus.com.au
architectus.co.nz

Contents

01

Context

Page 03
Location
Site Analysis



02

Design Strategies

Page 13
Design Principles
Circulation, Alignment and Activation
Form
Materiality
Learning Spaces and Work Place
Green Building

03

Architectural Drawings

Page 33
Architectural Drawings
Sections



04

Area Schedule

Page 62
Area Schedule

05

Design Excellence

Page 66
Design Excellence Criteria

Our proposal seeks to continue the landscape tradition at Sydney University creating positive and engaging new spaces around and between the R.D. Watt and the new FASS building.



Introduction

The heritage environment and the relatively constrained site require a finely nuanced approach to siting, materiality and form. Our proposal seeks to continue the landscape tradition at Sydney University creating positive and engaging new spaces around and between the R.D. Watt and the new FASS building.

The development will foster collaboration and a sense of community, and rejuvenate and integrate the R.D. Watt building into a 21st Century campus.



01 Context



01



02

01 View from Parramatta Road looking southeast towards RD Watt building. Photography by Grant Leslie

02 View from lower Science Road looking north towards the RD Watt building. Photography by Grant Leslie

03 View from Science Road looking northwest between the RD Watt and Heydon Laurence buildings. Photography by Grant Leslie

04 View from northeast corner of RD Watt building looking west. Photography by Grant Leslie



03



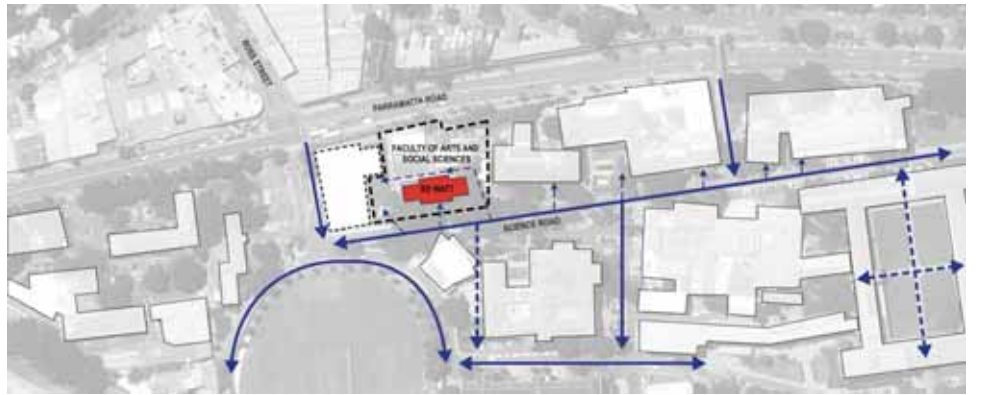
04

The FASS building proposal is a sensitive response to the challenges of the site. Located behind the R.D. Watt building and adjacent to the Heydon-Laurence building the site fronts Parramatta Road to the north and is accessed via Science Road to the south.





01 | Site and Surrounding Uses



02 | Circulation



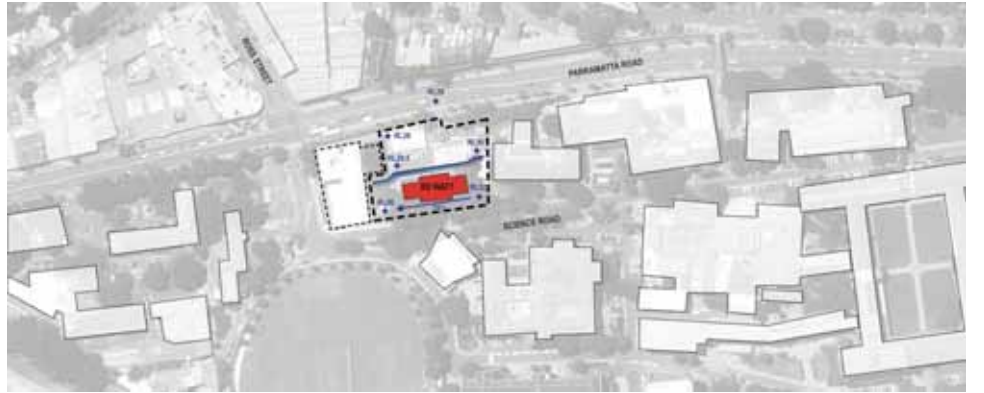
03 | Public Domain



04 | Building Heights



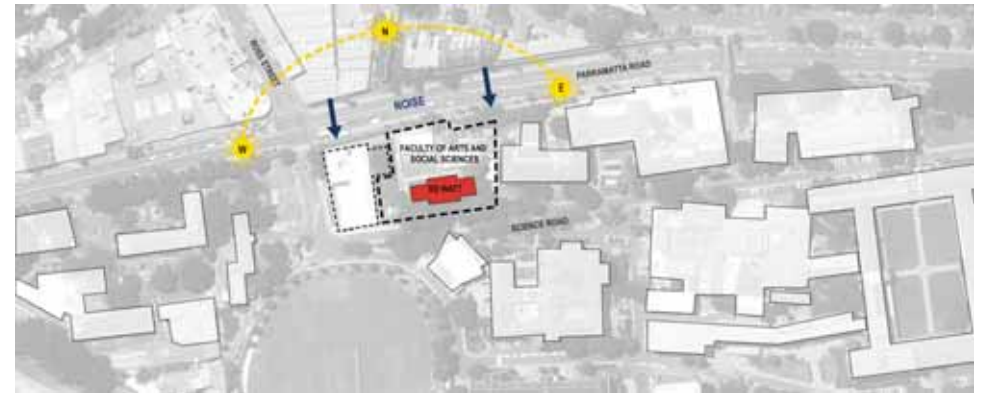
05 | Existing Conditions



06 | Topography



07 | Heights



08 | Solar Orientation



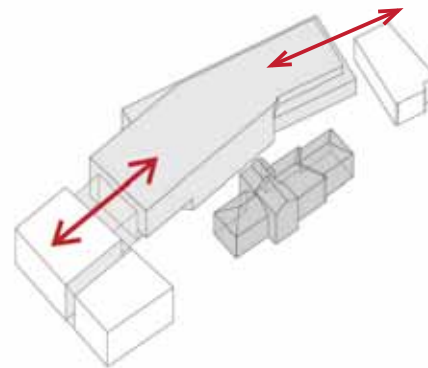
09 | Views



02 Design Strategies

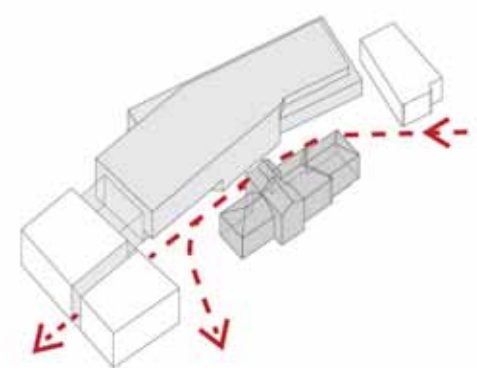
Our aspiration is a creative, healthy, comfortable, engaging and inspirational building with a distinct sense of place and identity - a sustainable and flexible building that integrates external spaces and landscaping and responds to the heritage context to provide a contemporary and world class educational building.

The following design strategies have been used to achieve the key drivers of Collaboration, Community, Sustainability, Excellence, Integration, Quality and Innovation.



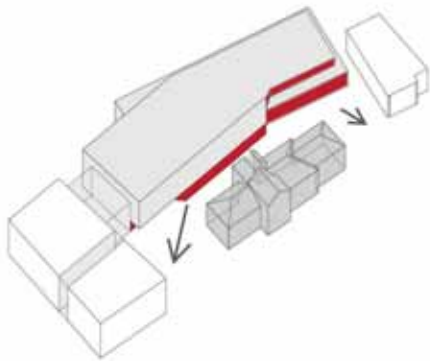
Alignment

The building aligns with the Heydon Laurence building to the east and the future Life Sciences to the west.



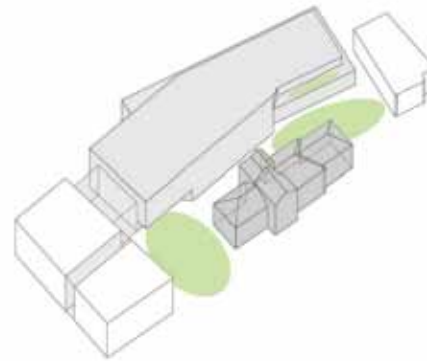
Circulation

The building sets back from R.D. Watt for primary circulation off Science road from the south east through to future Life Sciences to the west.



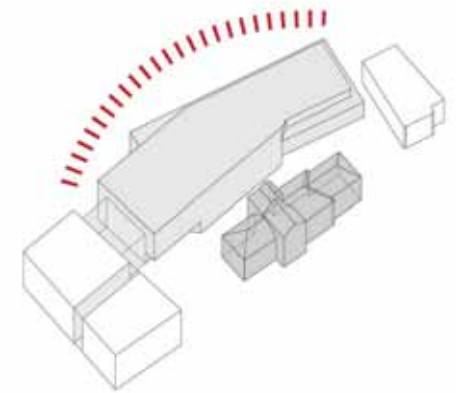
Activation

The building is activated with indoor outdoor edges at ground and roof levels.



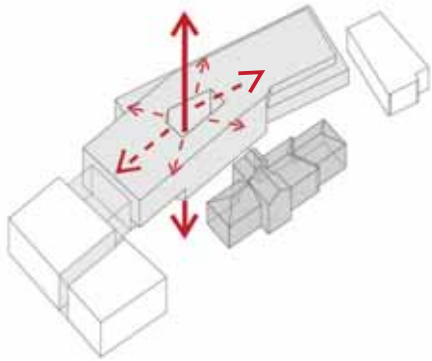
Courtyards

A Green space is created between FASS and RD Watt, a green forecourt between RD Watt and future Life Sciences, and an elevated green terrace on the roof.



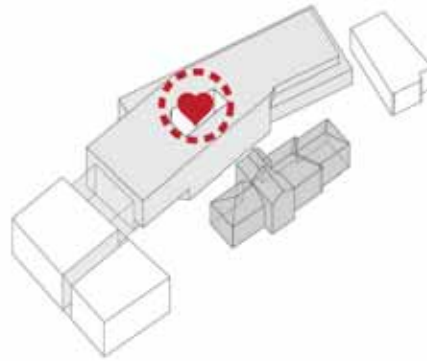
Identity

A dynamic expression to the public domain to create a high quality and internationally recognisable flagship identity.



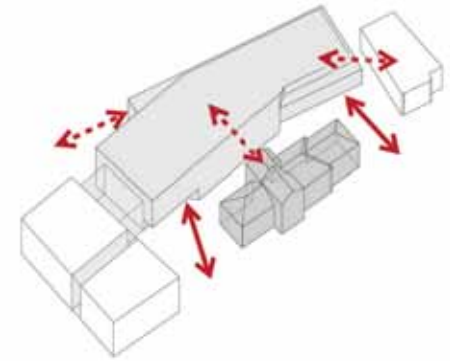
Internal Connectivity

The open atrium creates opportunities for physical and visual connectivity into the floorplates.



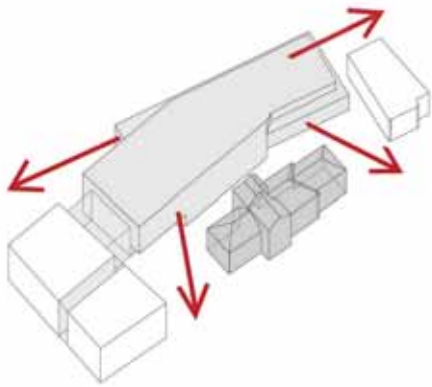
Social Heart

The social heart of the building is an atrium with circulation and breakout spaces to support social interaction. Creation of opportunities for indigenous art in the social heart.



External Connectivity

The ability for people to visually connect with internal activities within the building from external spaces.



Views

The building is designed to capitalise on short internal campus views to the south and longer Parramatta Rd views to the north.

The Architectus proposal seeks to set itself apart from the R.D. Watt building by creating a linear courtyard between which forms an entry space to the new building.



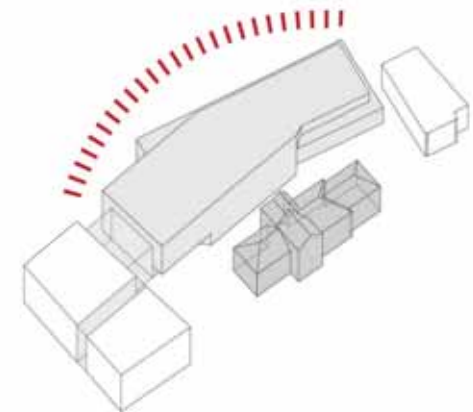
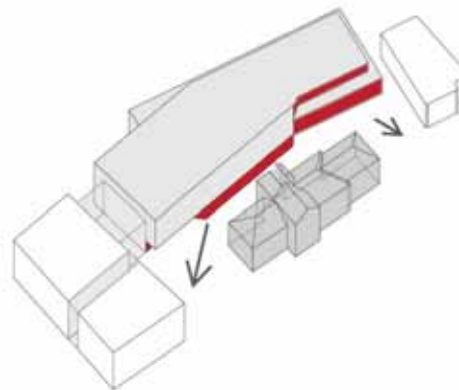
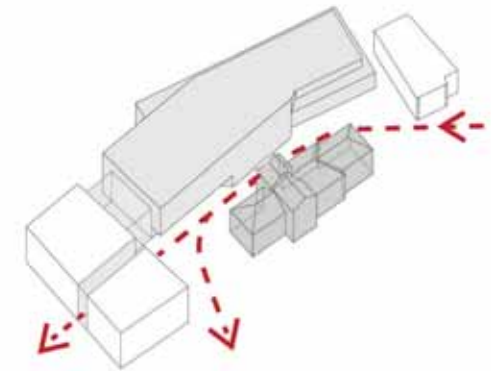
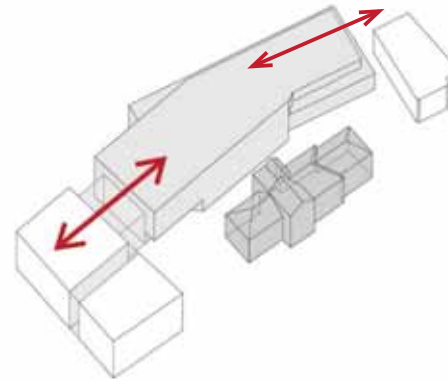
Circulation, Alignment and Activation

The Architectus proposal seeks to set itself apart from the R.D. Watt building by creating a linear courtyard between which forms an entry space to the new building.

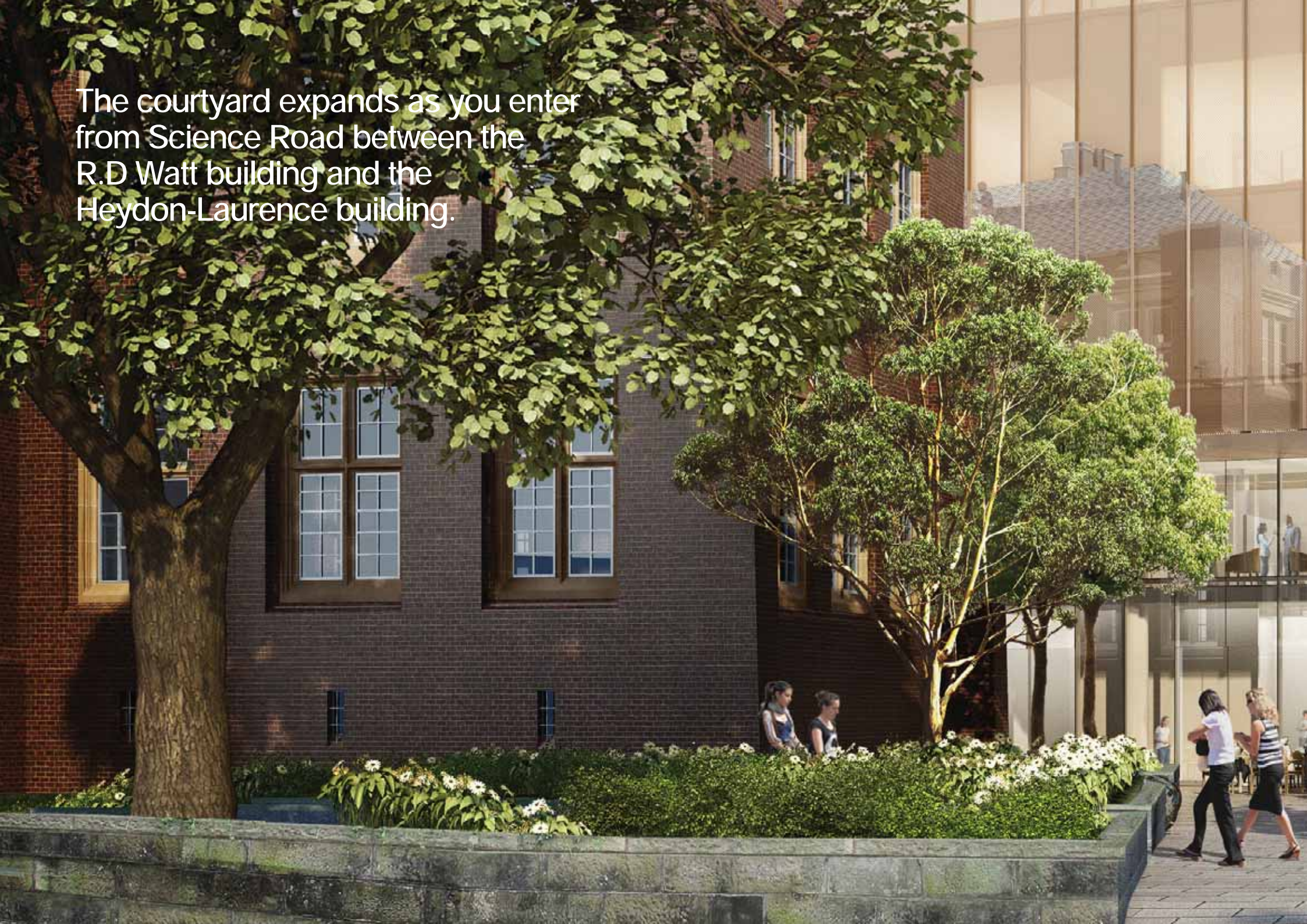
The orientation subtly shifts from the alignment of the Heydon-Laurence building to the alignment of the future Stage 2 Life Sciences Building, effectively bending around R.D. Watt. This expands the courtyard space as you move from Science Road towards the building entry from the east.

Moving through the new courtyard to the west the space is compressed at the change of level before opening to an expansive new landscape space which opens up to the south with views over the oval. This lower entry provides access from the west and is the primary entry for the new glass fronted lecture theatre.

To the north the two alignments of the building are reconciled as two planes moving past each other creating a strong presence on Parramatta Road and providing long vistas for the building occupants to the west.

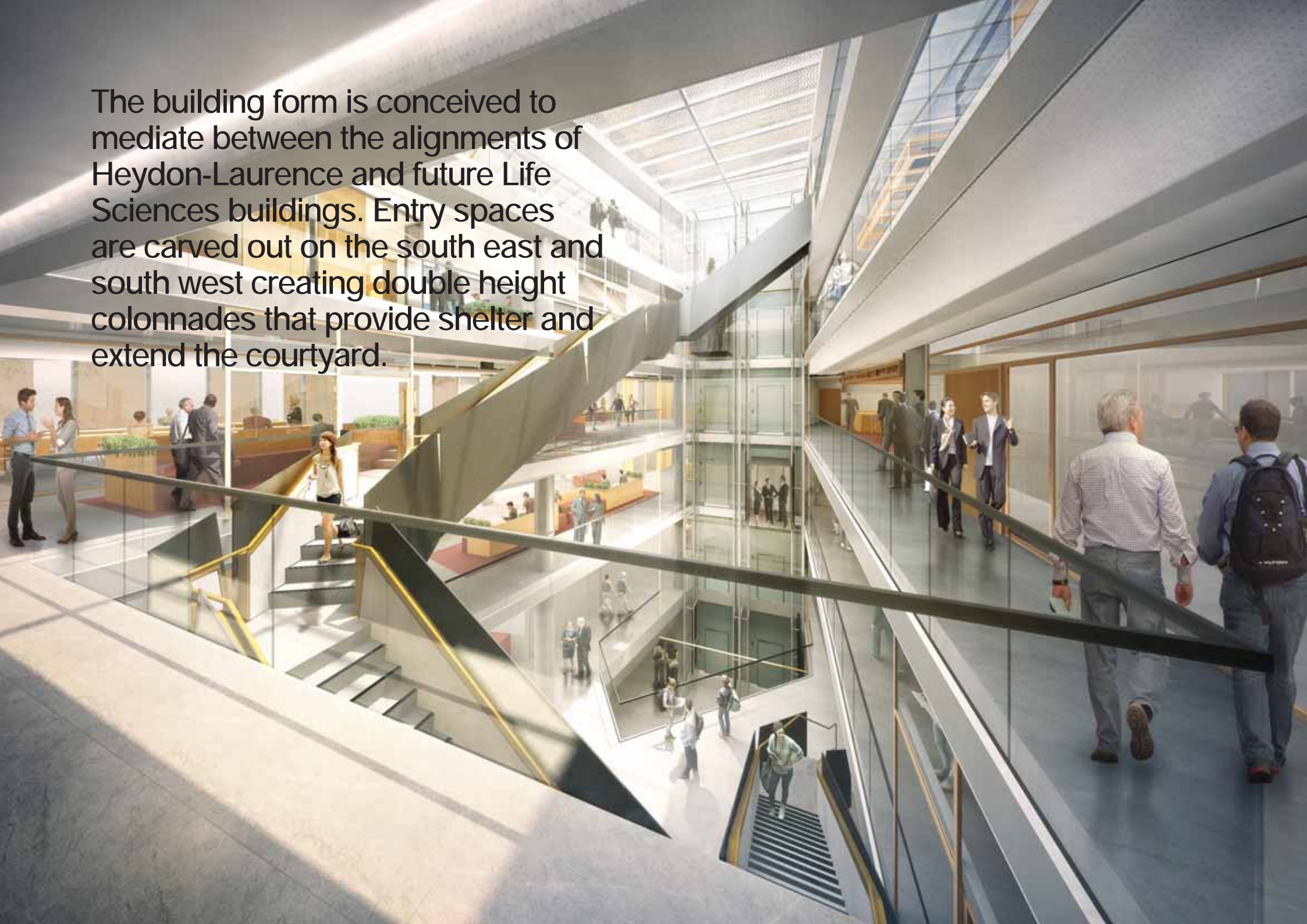


The courtyard expands as you enter from Science Road between the R.D Watt building and the Heydon-Laurence building.





The building form is conceived to mediate between the alignments of Heydon-Laurence and future Life Sciences buildings. Entry spaces are carved out on the south east and south west creating double height colonnades that provide shelter and extend the courtyard.



Form

The building form mediates between the alignments of the Heydon-Laurence and future Life Sciences buildings. Entry spaces are carved out on the south east and south west creating double height colonnades that provide shelter and extend the courtyard.

Along Parramatta Road the base is recessed to allow the main mass of the building to float above the established hedge and to avoid certain services easements.

A simple yet sophisticated skin wraps the building in a continuous spiral only coming to ground at the change in level in the new courtyard. At the top of the building the smaller floor plate allows for a landscaped roof terrace and the wrapping skin is terminated in the roof light construction.





The building skin is predominately glass sitting atop a stone plinth. The plinth lowers and rises to accommodate changes in level across the site. The glass skin is a sophisticated curtain wall with bronze anodised framing with a strong vertical emphasis.

Materiality

The building skin is predominately glass sitting atop a stone plinth. The plinth lowers and rises to accommodate changes in level across the site and the requirement of more solid facades to the main teaching spaces. The glass skin is a sophisticated curtain wall with bronze anodised framing with a strong vertical emphasis.

The continuity, repetition and subtle movement as the skin rises and falls creates a dynamic yet subtle and dignified back drop to the R.D. Watt building. Internally the warm facade interlayer tempers glare, reduces solar load and allows filtered views and light, creating an ambience akin to a veranda.



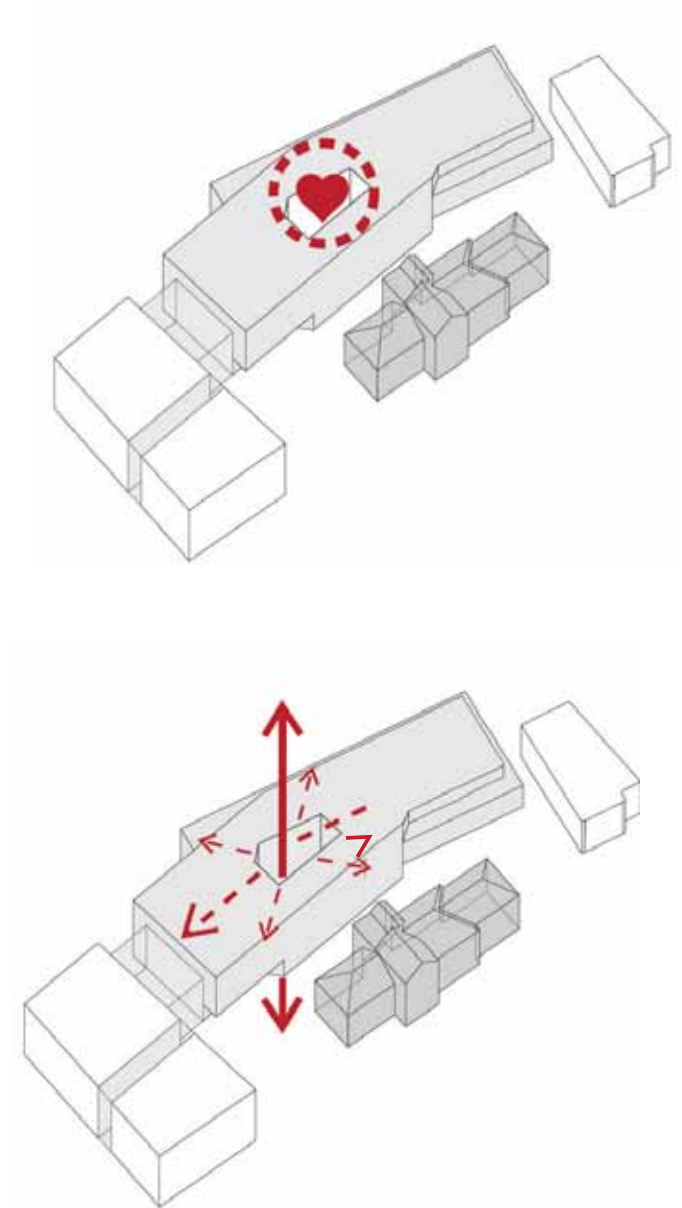
Learning Spaces & Work Place

Internally the building is designed to foster collaboration and a sense of community. This is achieved through transparency and connectivity. A social heart is formed around a central atrium space that physically and visually connects all floors.

Glass lifts and open stairs connect the floors allowing a high degree of physical and visual interaction. The primary collaboration spaces are located around the atrium facilitating informal and structured interactions across the faculty in an open and engaging environment. On the top floor a large meeting room adjoins a landscaped roof terrace. It is purposefully located to the east and south to protect it from the noise of Parramatta Road, provide views across

the campus towards the main Quadrangle and to be visible from the primary approach to FASS from Science Road. The roof terrace will be a major asset, providing space for formal and informal functions, reinforcing the FASS community and identity.

The main teaching and learning spaces are located on Level 1. These comprise seminar rooms and the lecture theatre. The seminar rooms have slot windows to Parramatta road and are ideal for focussed and private work. The main lecture theatre has a glass wall on the south and overlooks the new landscaped courtyard and beyond to the oval. This space can be blacked out with automated blinds or opened up to provide a stunning venue for public lectures.



Internally the building is designed to foster collaboration and a sense of community. This is achieved through transparency and connectivity. A social heart is formed around a central atrium space that physically and visually connects all floors.







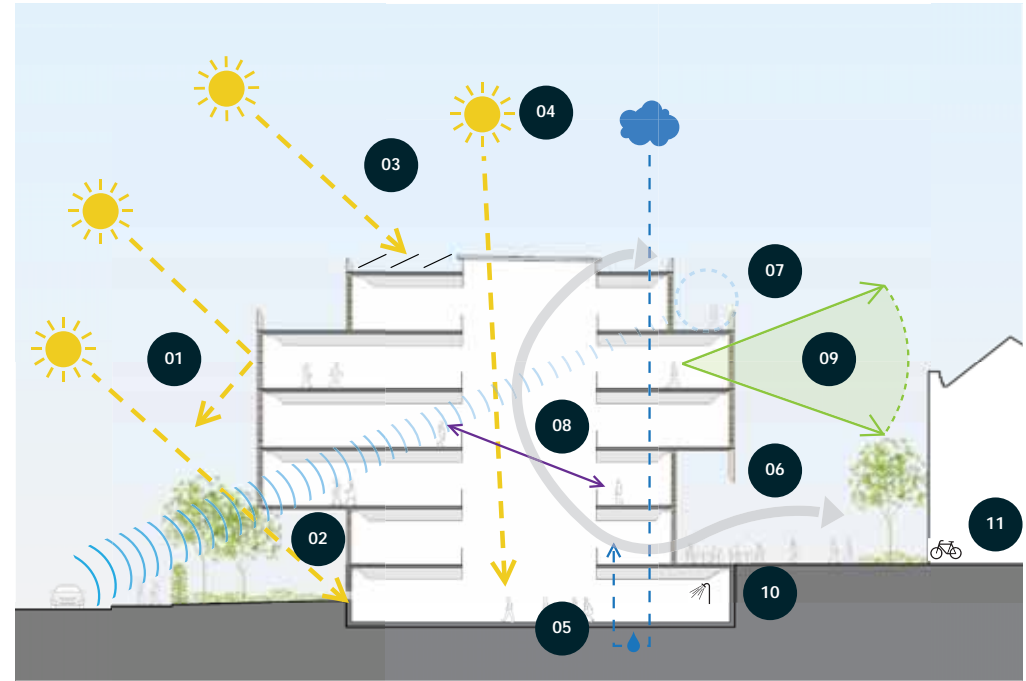
Green Building

Social sustainability is supported through a socially connected internal space that enjoys good daylight and views, while wellness is supported through provision of end of trip facilities.

Environmental sustainability is integrated into the building design through optimum solar orientation, daylight harvesting, potential for solar energy capture, potential for water harvesting

for grey-water recycling and optimum acoustic orientation. Superior indoor environmental quality will be achieved through sustainable material selections.

Financial Sustainability will be achieved through an efficient and cost effective building delivering value for money, with low maintenance costs.



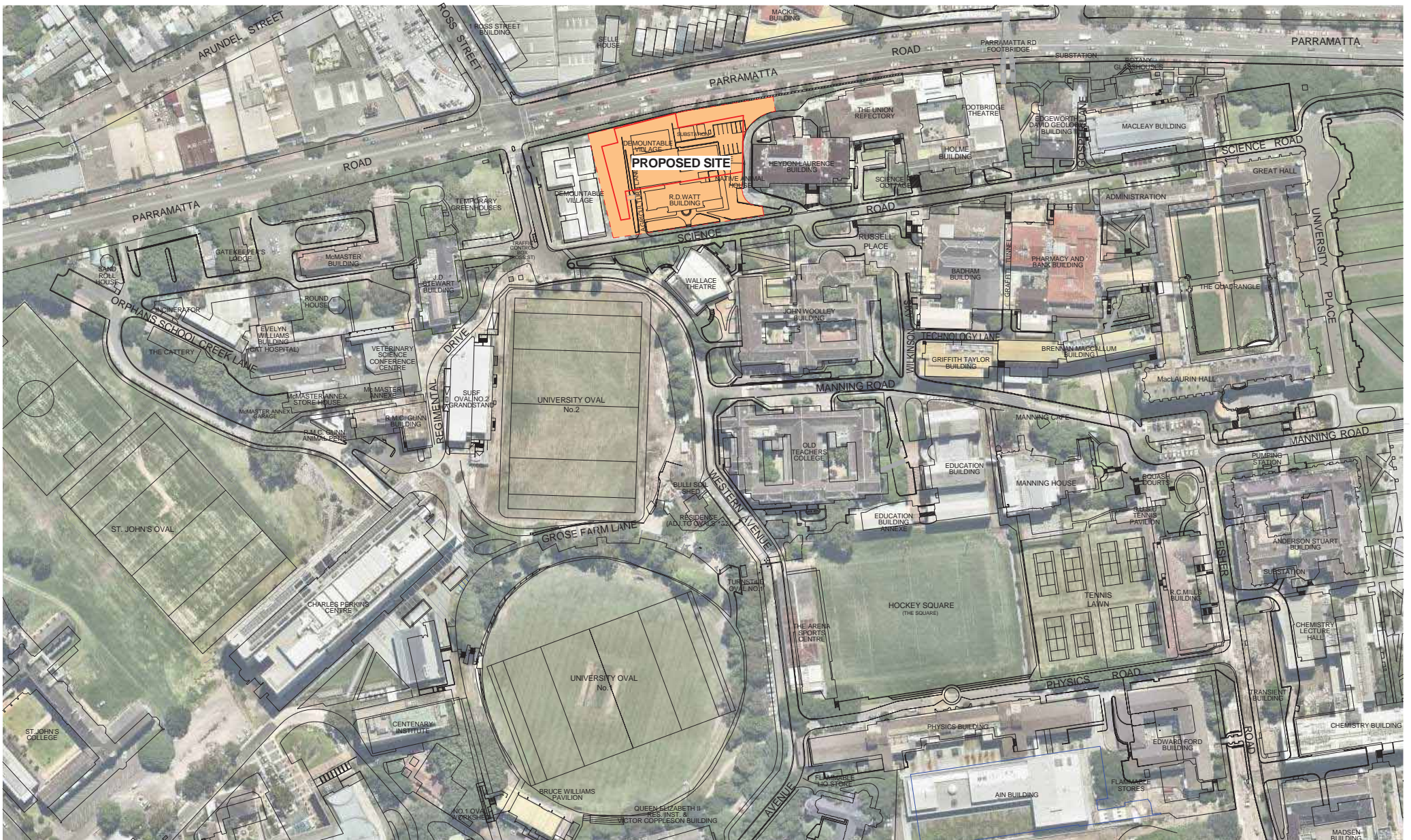
- 01 High performance facade
- 02 Solar shading
- 03 Solar PV panels
- 04 Daylight harvesting
- 05 Water capture and reuse
- 06 Natural ventilation
- 07 Acoustic screening
- 08 Social connectivity
- 09 Views
- 10 End of trip
- 11 Secure bike storage

Social sustainability is supported through a socially connected internal space that enjoys good daylight and views, while wellness is supported through provision of end of trip facilities.



03 Architectural Drawings

STREET



architectus

Architectus Group Pty Ltd is the owner of the copyright subsisting in these drawings, plans, designs and specifications. They must not be used, reproduced or copied, in whole or in part, nor may the information, ideas and concepts therein contained (which are confidential to Architectus Group Pty Ltd) be disclosed to any person without the prior written consent of that company.



issue	amendment	date
A	DRAFT FOR CONSULTATION	29.04.2016
B	DA DRAFT ISSUE - FOR REVIEW	27.05.2016
C	DA DRAFT ISSUE - FOR REVIEW	02.06.2016
D	DA ISSUE FOR REVIEW	10.06.2016
E	SSDA ISSUE	10.06.2016
F	SSDA ISSUE	20.06.2016



Do not scale drawings. Verify all dimensions on site

principal



client



architectus

Sydney
Melbourne
Auckland
Christchurch
Brisbane
Shanghai

Architectus Sydney
Level 18 M.L.C. Centre
19 Market Place
Sydney NSW 2000
T (61) 2 8562 8600
F (61) 2 8562 8600
sydney@architectus.com.au
A/NZ 06 131 245 964

checked	ACUD	scale	1 : 1000@A1
drawn	PM	project no	150479.00

project

F.A.S.S. Faculty of Arts & Social Sciences

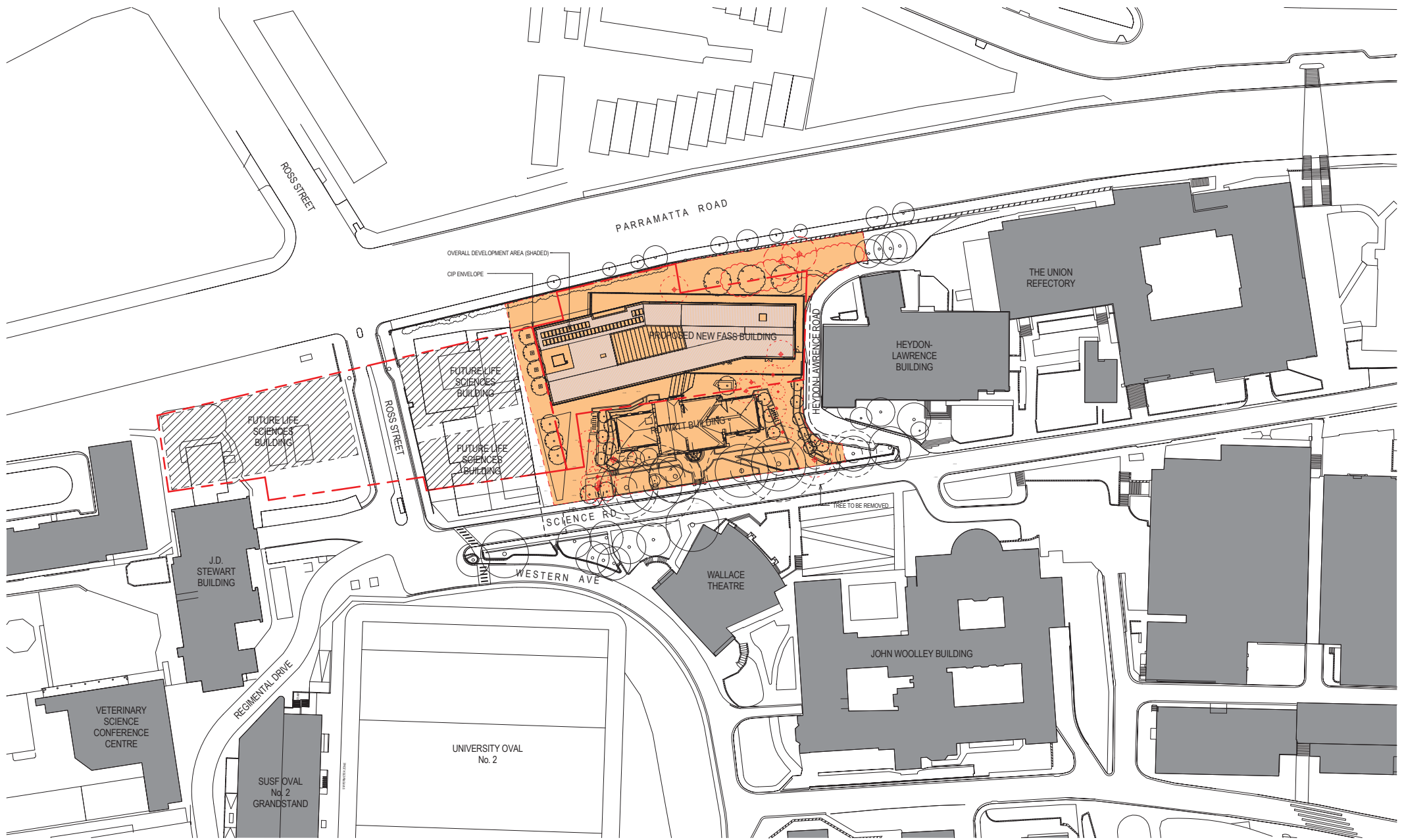
drawing

CONTEXT & LOCALITY PLAN

drawing no.

DA0001 F

20/06/2016 11:37:27 AM



architectus

Architectus Group Pty Ltd is the owner of the copyright subsisting in these drawings, plans, designs and specifications. They must not be used, reproduced or copied, in whole or in part, nor may the information, ideas and concepts therein contained (which are confidential to Architectus Group Pty Ltd) be disclosed to any person without the prior written consent of that company.



issue	amendment	date
A	DRAFT FOR CONSULTATION	29.04.2016
B	DA DRAFT ISSUE FOR REVIEW	27.05.2016
C	DA DRAFT ISSUE FOR REVIEW	02.06.2016
D	DA ISSUE FOR REVIEW	10.06.2016
E	SSDA ISSUE	16.06.2016
F	SSDA ISSUE	20.06.2016



principal



THE UNIVERSITY OF SYDNEY

client



architectusSM

Sydney
Melbourne
Auckland
Christchurch
Brisbane
Shanghai

Architectus Sydney
Level 18 MLC Centre
19 Market Place
Sydney NSW 2000
T (61 2) 8552 8600
F (61 2) 8252 8600
sydney@architectus.com.au
ABN 96 131 245 064

checked	ACUD	scale	1 : 500@A1
drawn	AC	project no	150479.00

project

F.A.S.S.

Faculty of Arts & Social Sciences

drawing

PROPOSED SITE PLAN

drawing no.

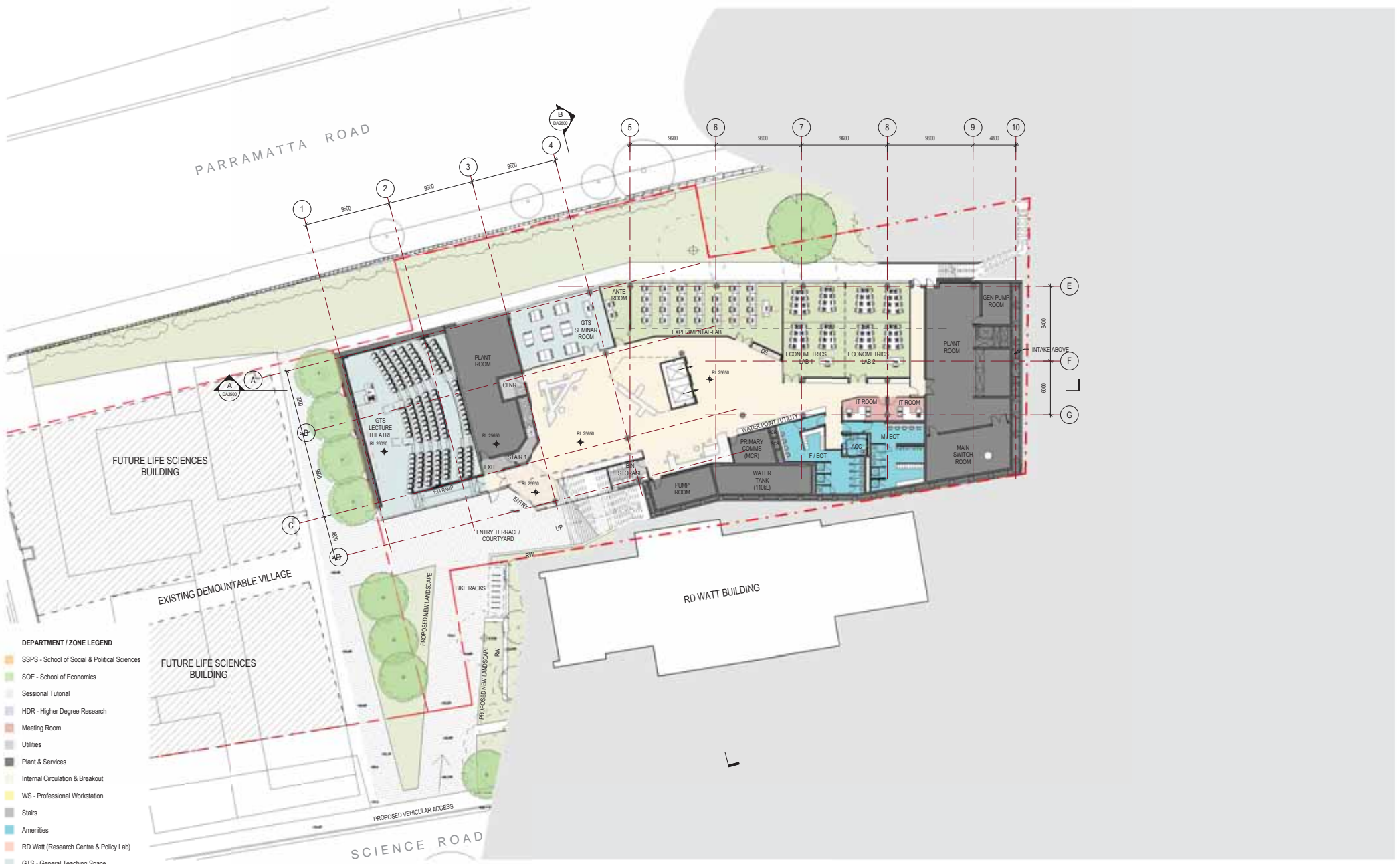
DA0003

issue

F

Do not scale drawings. Verify all dimensions on site

2016/2016 11:37:40 AM



- DEPARTMENT / ZONE LEGEND**
- SSPS - School of Social & Political Sciences
 - SOE - School of Economics
 - Sessional Tutorial
 - HDR - Higher Degree Research
 - Meeting Room
 - Utilities
 - Plant & Services
 - Internal Circulation & Breakout
 - WS - Professional Workstation
 - Stairs
 - Amenities
 - RD Watt (Research Centre & Policy Lab)
 - GTS - General Teaching Space

architectus
 Architectus Group Pty Ltd is the owner of the copyright subsisting in these drawings, plans, designs and specifications. They must not be used, reproduced or copied, in whole or in part, nor may the information, ideas and concepts therein contained (which are confidential to Architectus Group Pty Ltd) be disclosed to any person without the prior written consent of that company.

issue	amendment	date
A	DRAFT FOR CONSULTATION	29.04.2016
B	ISSUE FOR PLS	05.05.2016
C	DA DRAFT ISSUE - FOR REVIEW	27.05.2016
D	DA DRAFT ISSUE - FOR REVIEW	02.06.2016
E	DA ISSUE FOR REVIEW	10.06.2016
F	SSDA ISSUE	16.06.2016
G	SSDA ISSUE	20.06.2016



- LEGEND**
- BR PROPOSED BIKE RACKS
 - CLR CLEANERS ROOM
 - EXP EXPANSION OFFICE
 - RW PROPOSED LANDSCAPE RETAINING WALL
 - OF OVERFLOW
- NOTE:**
 NEW LANDSCAPING AS PER PROPOSED LANDSCAPE PLANS



architectusTM

Sydney
 Melbourne
 Adelaide
 Auckland
 Christchurch
 Brisbane
 Shanghai

Architectus Sydney
 Level 18 M.L.C. Centre
 19 Market Place
 Sydney NSW 2000
 T (61 2) 8552 8600
 F (61 2) 8252 8600
 sydney@architectus.com.au
 AIN 96 131 245 864

checked	ACJD	scale	1 : 200@A1
drawn	ACHZ	project no	150479.00

project
F.A.S.S. Faculty of Arts & Social Sciences

drawing
LEVEL 1 PLAN

drawing no.
DA1010

issue
G

Do not scale drawings. Verify all dimensions on site