



5/6



1



7,8,9



3



4,11



10



10



2



MATERIALS KEY

- 1 ROOF SHEETING - LYSAGHT LONGLINE 305 SYSTEM - COSMIC GREY
- 2 PEBBLES - COWRA WHITE
- 3 ANODISED ALUMINIUM MULLIONS - WARM METALLIC COLOUR
- 4 ANODISED ALUMINIUM MULLIONS - NATURAL
- 5 HIGH PERFORMANCE DOUBLE-GLAZED, CURTAIN WALL SYSTEM WITH INTER-LAYER
- 6 CURTAIN WALL PANEL TO MATCH MESH SCREEN IN A 2 STAGE LOUVRE SYSTEM
- 7 CLEAR LOW IRON DOUBLE GLAZED UNIT
- 8 CLEAR LOW IRON HIGH PERFORMANCE GLASS
- 9 CLEAR LOW IRON ENGINEERED GLASS FACADE
- 10 GRANITE - BEDONIA GREY
- 11 PERFORATED ALUMINIUM SCREEN TO LOUVRE, NATURAL ANODISED

architectus

Architectus Group Pty Ltd is the owner of the copyright subsisting in these drawings, plans, designs and specifications. They must not be used, reproduced or copied, in whole or in part, nor may the information, ideas and concepts therein contained (which are confidential to Architectus Group Pty Ltd) be disclosed to any person without the prior written consent of that company.



Do not scale drawings. Verify all dimensions on site

issue	amendment	date
A	SSDA ISSUE	16.06.2016
B	SSDA ISSUE	20.06.2016



architectus™

Sydney
Melbourne
Adelaide
Auckland
Christchurch
Brisbane
Shanghai

Architectus Sydney
Level 18 MLC Centre
19 Market Place
Sydney NSW 2000
T (61 2) 8552 8600
F (61 2) 8552 8600
sydney@architectus.com.au
ABN 66 131 245 664

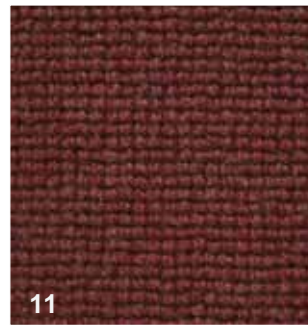
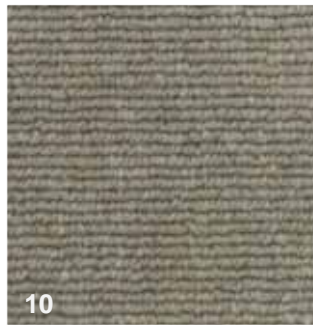
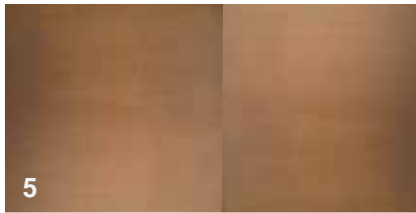
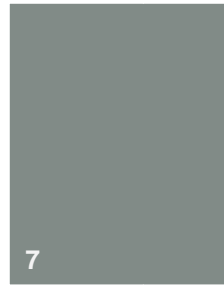
checked	AC/UD	scale	NTS
drawn	HD	project no	150479.00

project
F.A.S.S. Faculty of Arts & Social Sciences

drawing
PROPOSED EXTERNAL FINISHES

drawing no.	issue
DA9300	B

27/06/2016 11:28:12 AM



MATERIALS KEY

- 1 TIMBER - JOINERY, SOLID DOORS
- 2 LOW IRON FRAMELESS GLASS BALUSTRADE
- 3 POWDERCOAT STEEL PLATE SHROUD TO STAIR
- 4 METAL DETAILING
- 5 COPPER - HANDRAIL, JOINERY DETAIL
- 6 EXPOSED CONCRETE SLAB
- 7 RUBBER FLOORING
- 8 FURNITURE UPHOLSTERY
- 9 STONE FLOORING
- 10 CARPET
- 11 CARPET INSERT
- 12 KEIM CONCRETAL LASUR - MINERAL CONCRETE STAIN

architectus

Architectus Group Pty Ltd is the owner of the copyright subsisting in these drawings, plans, designs and specifications. They must not be used, reproduced or copied, in whole or in part, nor may the information, ideas and concepts therein contained (which are confidential to Architectus Group Pty Ltd) be disclosed to any person without the prior written consent of that company.



Do not scale drawings. Verify all dimensions on site

issue	amendment	date
A	SSDA ISSUE	16.06.2016
B	SSDA ISSUE	20.06.2016

principal



client



architectusTM

Sydney
Melbourne
Adelaide
Auckland
Christchurch
Brisbane
Shanghai

Architectus Sydney
Level 18 MLC Centre
19 Market Place
Sydney NSW 2000
T (61 2) 8552 8600
F (61 2) 8552 8600
sydney@architectus.com.au
ABN 66 131 245 664

checked	AS	scale	NTS
drawn	NH	project no	150479.00

project

F.A.S.S. Faculty of Arts & Social Sciences

drawing

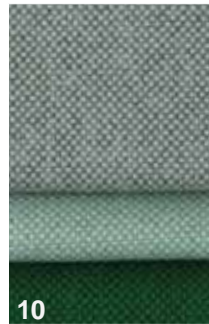
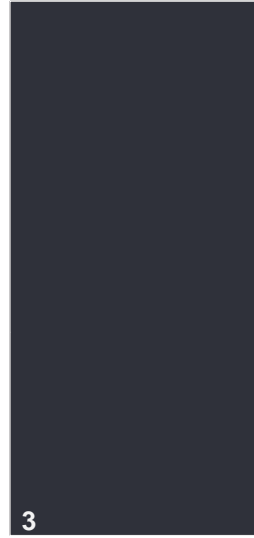
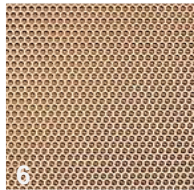
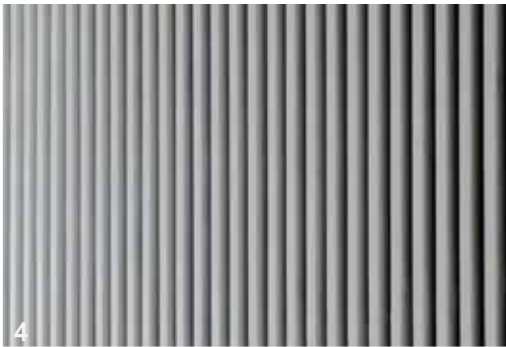
PROPOSED INTERIOR FINISHES

drawing no.

DA9301

issue

B



MATERIALS KEY

- 1 TIMBER - JOINERY, FEATURE WALLS AND DOORS
- 2 PAINT FINISH
- 3 POWDERCOAT ALUMINIUM FRAMING TO PARTITIONS
- 4 FEATURE WALL CLADDING
- 5 COPPER - HANDRAIL, JOINERY DETAIL
- 6 PERFORATED COPPER CEILING
- 7 BATHROOM WALL TILE
- 8 CARPET
- 9 QUARTZ STONE TILE FLOORING
- 10 FURNITURE UPHOLSTERY

architectus

Architectus Group Pty Ltd is the owner of the copyright subsisting in these drawings, plans, designs and specifications. They must not be used, reproduced or copied, in whole or in part, nor may the information, ideas and concepts therein contained (which are confidential to Architectus Group Pty Ltd) be disclosed to any person without the prior written consent of that company.



Do not scale drawings. Verify all dimensions on site

issue	amendment	date
A	SSDA ISSUE	16.06.2016
B	SSDA ISSUE	20.06.2016

DRAFT



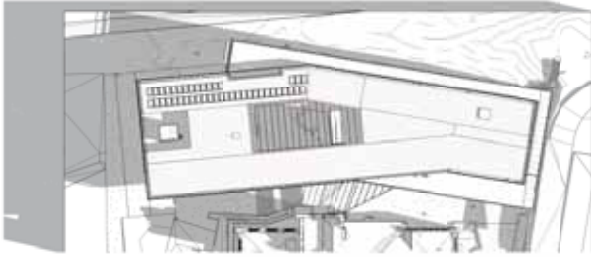
checked	AS	scale	NTS
drawn	NH	project no	150479.00

architectus™

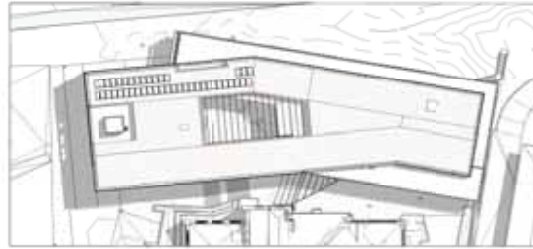
Sydney
Melbourne
Adelaide
Auckland
Christchurch
Brisbane
Shanghai

Architectus Sydney
Level 18 MLC Centre
19 Market Place
Sydney NSW 2000
T (61 2) 8552 8600
F (61 2) 8552 8600
sydney@architectus.com.au
ABN 69 131 245 664

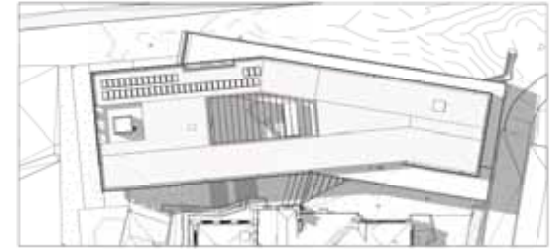
project	F.A.S.S. Faculty of Arts & Social Sciences
drawing	PROPOSED RD WATT INTERIOR FINISHES
drawing no.	DA9302
issue	B



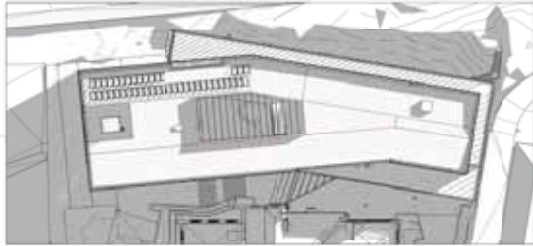
1 Solar Study_Dec 21_9 am



2 Solar Study_Dec 21_12 pm



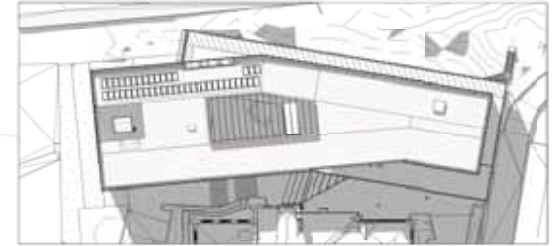
3 Solar Study_Dec 21_3 pm



4 Solar Study_Jun 21_9 am



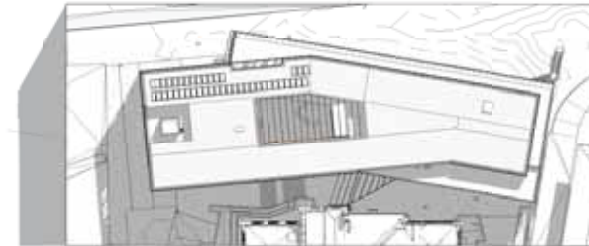
5 Solar Study_Jun 21_12 pm



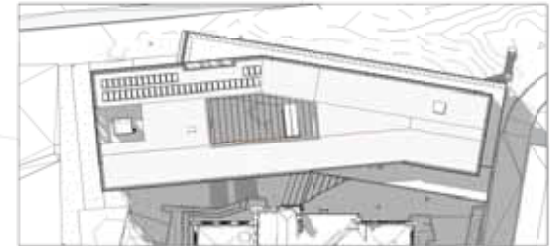
6 Solar Study_Jun 21_3 pm



9 Solar Study_Sep 21_9 am



8 Solar Study_Sep 21_12 pm



7 Solar Study_Sep 21_3 pm

architectus

Architectus Group Pty Ltd is the owner of the copyright subsisting in these drawings, plans, designs and specifications. They must not be used, reproduced or copied, in whole or in part, nor may the information, ideas and concepts therein contained (which are confidential to Architectus Group Pty Ltd) be disclosed to any person without the prior written consent of that company.



issue	amendment	date
A	DRAFT FOR CONSULTATION	29.04.2016
B	DA DRAFT ISSUE - FOR REVIEW	27.05.2016
C	DA DRAFT ISSUE - FOR REVIEW	02.06.2016
D	SSDA ISSUE	16.06.2016
E	SSDA ISSUE	20.06.2016

Do not scale drawings. Verify all dimensions on site

principal



THE UNIVERSITY OF SYDNEY

client



architectus™

Sydney
Melbourne
Auckland
Christchurch
Brisbane
Shanghai

Architectus Sydney
Level 18 MLC Centre
19 Market Place
Sydney NSW 2000
T (61 2) 8552 8600
F (61 2) 8552 8600
sydney@architectus.com.au
ABN 66 131 245 664

checked	scale	NTS
ACUD		
drawn	PM	project no 150479.00

project

F.A.S.S. Faculty of Arts & Social Sciences

drawing

SHADOW ANALYSIS

drawing no.

DA9200

issue

E



South West



South East



North West



North East



Interior

04 Area Schedule

Area Schedule

UNIVERSITY OF SYDNEY - FACULTY OF ARTS AND SOCIAL SCIENCE

*GFA Calculations include on floor Circulation - exclude Plant areas and vertical circulation as per GFA definition under City of Sydney

LEVEL 1 - TEACHING HUB

ZONE B TEACHING & LEARNING				
Dep	Space Name	Popln	Qty Req.	GFA Req. (m2)
	Entry Lobby		1	30
	Econometrics Labs	64	1	220
	Economics Experimental Lab	28	1	147
	Anteroom (Experimental Lab)		1	21.25
	GTS Seminar Room	28	1	110
	Student Breakout / Assembly		1	200
	Student Utilities/Copy/Print		1	30
	Tea Point		1	10
	IT Build Room		1	15.63
	IT Store Room		1	15.63
	Primary MCR (Comms Room)		1	
ZONE B	SUBTOTAL			800

AMENITIES				
				GFA Req. (m2)
	End of Trip (Male, Female, Accessible)			120
	Cleaner's Room		1	9
	SUBTOTAL			129
				929

LEVEL 2 - STUDENT HUB

ZONE A FACULTY HUB				
Dep	Space Name	Popln	Qty Req.	GFA Req. (m2)
	Entry Lobby		1	68
	GTS Seminar Room	40	1	142
	Consultation Rooms	4	4	70
	Student Study and Lounge	150	1	216
	Student Utilities/Copy/Print		1	12.5
	Student Breakout / Assembly		1	168
	GTS Lecture Theatre	256	1	390
	Tea Point		1	6.25
ZONE A	SUBTOTAL			1073

AMENITIES				
				GFA Req. (m2)
	Bathrooms (Male, Female, Accessible)			54.3
	Parents Room & First Aid			30
	Cleaner's Room		1	6
	SUBTOTAL			90.3
				1163

LEVEL 3 - SCHOOL OF SOCIAL AND POLITICAL SCIENCES

ZONE C STAFF WORKSPACE				
Dep	Space Name	Popln	Qty Req.	GFA Req. (m2)
SSPS	Academic Office		42	675
	Professional Office		2	35
	Professional Workstation		14	123
	Honorary / Emeritus Workstation		8	70
Shared Spaces	Staff Lounge / Collaboration Lounge			100
	Tea Point		1	18
	Utility Room		1	14
	Media Room		1	25
	25p Meeting Room		1	106
	12p Meeting Room		1	44
	Professional Storage /Lockers		30	6
	Mail Room		1	15.7
	FCR (Comms Room)		1	
ZONE C	SUBTOTAL			1232

ZONE F SESSIONAL / TUTORIAL ACCOMMODATION				
Dep	Space Name	Popln	Qty Req.	GFA Req. (m2)
	Sessional Tutorial - Work Desks			105
ZONE F	SUBTOTAL			105

AMENITIES				
				GFA Req. (m2)
	Bathrooms (Male, Female, Accessible)			42
	Cleaner's Room		1	5
	SUBTOTAL			47
				1384

LEVEL 4 - SCHOOL OF SOCIAL AND POLITICAL SCIENCES

ZONE C STAFF WORKSPACE				
Dep	Space Name	Popln	Qty Req.	GFA Req. (m2)
SSPS	Academic Office		58	930
	Professional Workstation		8	82
	Honorary / Emeritus Workstation		4	35
Shared Spaces	Staff Lounge / Collaboration Lounge / Informal Meeting			160
	Tea Point		1	18
	Utility Room		1	14
	25p Meeting Room		1	127
	Professional Storage /Lockers		30	6
	FCR (Comms Room)		1	
ZONE C	SUBTOTAL			1372

ZONE F SESSIONAL / TUTORIAL ACCOMMODATION				
Dep	Space Name	Popln	Qty Req.	GFA Req. (m2)
	Sessional Tutorial - Work Desks			105
ZONE F	SUBTOTAL			105

AMENITIES				
				GFA Req. (m2)
	Bathrooms (Male, Female, Accessible)			42
	Cleaner's Room		1	5
	SUBTOTAL			47
				1524

**LEVEL 5 - SCHOOL OF ECONOMICS**

ZONE C STAFF WORKSPACE				
Dep	Space Name	Popln	Qty Req.	GFA Req. (m2)
Economics	Academic Office		58	930
	Professional Office		2	35
	Professional Workstation		10	87.5
	Honorary / Emeritus Workstation		4	35
Shared Spaces				
	Staff Lounge / Collaboration Lounge / Focus Pods			165
	Tea Point		1	18
	Utility Room		1	14
	12p Meeting Room		1	53
	Professional Storage / Lockers		12	4
	Mail Room		1	15.7
	Secondary MCR (Comms Room)		1	
ZONE C	SUBTOTAL			1357

ZONE F SESSIONAL / TUTORIAL ACCOMMODATION				
Dep	Space Name	Popln	Qty Req.	GFA Req. (m2)
	Sessional Tutorial - Work Desks			120
ZONE F	SUBTOTAL			120

AMENITIES				
				GFA Req. (m2)
	Bathrooms (Male, Female, Accessible)			42
	Cleaner's Room	1		5
	SUBTOTAL			47
				1524

LEVEL 6

ZONE C STAFF WORKSPACE				
Dep	Space Name	Popln	Qty Req.	GFA Req. (m2)
SOE	Academic Office		7	120.5
SSPS	Academic Office		5	88.5
Expansion	Academic Office		2	36
Shared Spaces				
	Staff Lounge / Collaboration Lounge			52
	Kitchenette / Catering		1	28.5
	Utility Room		1	20
	Post Graduate Seminar Room		1	168
	Store Room		1	25
ZONE C	SUBTOTAL			539

AMENITIES				
				GFA Req. (m2)
	Bathrooms (Male, Female, Accessible)			50
	Cleaner's Room	1		6
	SUBTOTAL			56
				595

FASS TOTAL**7118****RD WATT BUILDING**

Dep	Space Name	Popln	Qty Req.	GFA Req. (m2)
	Registration Area		1	64
	Catering Kitchenette		1	26
	90 Flat Lecture	90	1	130
	15P Meeting Room	15	1	54
	L2 Amenities			8
LEVEL 2	SUBTOTAL			282
Policy Lab	Faculty Visitors	4	1	26
Policy Lab	Policy Research	12	1	56
	Workshop Space		1	24
Policy Lab	Offices	2	2	34
	L3 Amenities		1	22
	Tea Room		1	16
LEVEL 3	SUBTOTAL			178
	Faculty Common Room		1	54
HDR	Shared Access Work Desk (HDR)		16	61
SSSHARC	Offices		2	34
SSSHARC	Workstations		14	90
	Comms Room		1	
LEVEL 4	SUBTOTAL			239
HDR	Shared Access Work Desk (HDR)		6	30
HDR	Shared Access Work Desk (HDR)		34	121
	Combined Tea Room / Utility		1	16
	L5 Amenities			20
LEVEL 5	SUBTOTAL			187
HDR	Shared Access Work Desk (HDR)		16	61
HDR	Shared Access Work Desk (HDR)		12	52
	Store		1	10
	Comms Room		1	
LEVEL 6	SUBTOTAL			123

RD WATT TOTAL 1009**GRAND TOTAL****8127**

*GFA Calculations include on floor Circulation - exclude Plant areas and vertical circulation as per GFA definition under City of Sydney

05 Design Excellence

Design Excellence Assessment Criteria

The proposed design achieves Design Excellence in accordance with the criteria in SYDNEY LOCAL ENVIRONMENTAL PLAN 2012 - REG 6.21 as follows:

(a) whether a high standard of architectural design, materials and detailing appropriate to the building type and location will be achieved,

The following design strategies have been implemented to ensure a “design excellence” outcome for the new design:

1. Alignment – The new building aligns with the Heydon-Laurence building to the east and the future Life Sciences to the west.
2. Circulation – The building sets back from the heritage RD Watt Building for the primary circulation off Science road from the south east to the future Life Sciences to the west.
3. Activation – The building is activated with indoor outdoor edges at ground and roof level.
4. Courtyards – A green space is created between FASS and RD Watt, a green forecourt between RD Watt and the Future Life Sciences, and an green roof terrace to FASS.
5. Identity – The form provides a dynamic expression to the public domain to create a high quality and internationally recognisable flagship identity externally.
6. Internal Connectivity – The open atrium creates opportunities for physical and visual connectivity into the floor plates
7. Social Heart – The social heart of the building is a central atrium with circulation and breakout spaces to support social interaction. Creation of opportunities for indigenous art in the social art exists within this space.
8. External Connectivity – The ability for people to visually connect with internal activities within the building from external spaces
9. Views – The building has been designed to capitalise on short internal campus views to the south and longer Parramatta Road views to the north.

10. Community – Offices and workstations are grouped in clustered arrangement to facilitate integration of teaching and learning communities.

These principles are further diagrammatically represented in the architectural design report. The building materiality is predominately glass sitting atop a stone plinth that lowers and rises to accommodate changes in level across the site and the requirement of more solid facades to the main teaching spaces. The glass skin is a sophisticated curtain wall with strong vertical emphasis. The continuity, repetition and subtle movement as the skin rises and falls creates a dynamic and dignified back drop to the RD Watt building.

Internally the warm facade interlayer tempers glare, reduces solar load and allows filtered views and light, creating an ambience akin to a veranda, whilst providing a warm mood externally that compliments the brick facade of RD Watt.

(b) the bulk, massing and modulation of buildings;

(c) street frontage heights,

(d) ensure the form and external appearance of the proposed design improves the quality and amenity of the public domain between R.D. Watt and the new building as well as surrounds including Parramatta Road and Science Road;

The response to items(b), (c) and (d) above is combined below:

The 6 storey building form mediates between the alignments of the future 5 Storey Life Sciences Building and 3 storey Heydon-Laurence buildings. Entry spaces have been carved out on the south east and south west, creating double height colonnades that provide shelter and extend the courtyard around the 4 storey RD Watt Building.

Along Parramatta Road, the base of the new building has been recessed to allow the main 3 storey mass of the building to float above the established hedge with a setback top floor to reduce visual mass. A simple yet sophisticated skin wraps the building in a continuous

spiral, only coming to ground at the change in level in the new courtyard. At the top of the building, the smaller floor plate has allowed for a landscaped roof terrace and the wrapping skin is terminated in the atrium roof construction.

(e) whether the proposed development detrimentally impacts on view corridors,

The building sits within the Stage 1 DA approved envelope at a lower height than the previous JRA building which stood considerably higher and was demolished in 2012. The proposed building provides outlook to optimise immediate view amenity around the entire building, including long westerly vistas down Parramatta Road.

(f) how the proposed development addresses the following matters:

(i) the suitability of the land for development,

(ii) the existing and proposed uses and use mix,

The response to items(i) and (ii) above is combined below:

The site has been identified within the University’s Campus Improvement Program (CIP) and associated Stage 1 DA. The footprint and building envelope was approved for future development as part of this process and hence it suitability for development has previously been established. The proposed use is consistent with that envisaged under the CIP and required by its relevant university user groups. Internal spaces at ground level have been specifically designed and arranged to positively respond to the adjoining public domain.

(g) how the proposed design addresses heritage constraints of the adjacent RD Watt Building and other nearby buildings such as Heydon-Laurence building;

The heritage environment and the relatively constrained site requires a finely nuanced approach to siting, materiality

and form. The design seeks to continue a landscape tradition at Sydney University creating positive and engaging new spaces around and between RD Watt and the new FASS Building. The new building will foster collaboration and a sense of community and rejuvenate and integrate the RD Watt building into the 21st Century campus.

The revised form provides additional views of RD Watt from the South East & South West and vistas of the adjacent Heydon Laurence building from the newly created courtyard between RD Watt and New FASS Building.

(h) how the proposed design addresses streetscape constraints of Parramatta Road and Science Road;

The north elevation on Parramatta Road is where the two alignments of the new building are reconciled as two planes moving past each other. This creates a strong presence on Parramatta Road and provides long vistas for the building occupants to the west.

(i) the location of any tower proposed, having regard to the need to achieve an acceptable relationship with other towers (existing or proposed) on the same site or on neighbouring sites in terms of separation, setbacks, amenity and urban form,

A tower is not proposed however we have applied the intent of this criteria to the FASS project in (j) below:

(j) how the proposed design addresses the future adjacent & very likely abutting Life Sciences building, connectivity between these new buildings as well as connections through the ground level public domain, in addition to resultant building footprint constraints;

The building has been sited to create a large forecourt opportunity to the south west that will easily be integrated into the Future Life Sciences precinct as depicted in the landscape plans within this report. The west elevation of the building has also been scaled to provide a less imposing elevation for future connection. The floor plate

contemplates connections on the typical floors and the courtyard between RD Watt and the new FASS building creates a natural alignment for future ground plane connection.

(k) environmental impacts, such as sustainable design, overshadowing and solar access, visual and acoustic privacy, noise, wind and reflectivity;

(l) the achievement of the principles of ecologically sustainable development;

The response to items (k) and (l) is combined below.

The north-south orientation of the main elevations of the building is ideal for sustainable passive solar design. The revised form provides a physical screen from the Parramatta Road noise source to the quieter passive external spaces to the south of the new building. Whilst some shadowing can be expected in the courtyard between RD Watt and the new FASS building, particularly in the winter months, the creation of the lower courtyard to the south west and an elevated terrace will provide alternate locations to catch the winter sun.

The courtyard has been scaled to provide suitable width between the RD Watt and the new FASS building and it is expected that with the use of physical breaks within this space such as trees and landscaping that wind modelling will indicate a relatively passive environment.

Social sustainability is supported through a socially connected internal space that enjoys good daylight and views, while wellness is supported through provision of end of trip facilities.

Environmental sustainability is integrated into the building design through optimum solar orientation, daylight harvesting and the potential for solar energy capture. Indoor environment quality will be achieved through sustainable material selections.

(m) pedestrian, cycle, vehicular and service access and circulation requirements, including the permeability of any pedestrian network;

Please refer to the architectural design report where

circulation and connectivity is graphically represented. Cyclist access is envisaged via the south east entry where bikes would be dropped off into the central bike storage room located in the low head height section of the RD Watt Building before proceeding to Level 1 of the new FASS building where the End of Trip facilities are located.

Service vehicle access is via an access point off the driveway adjacent to Heydon-Laurence in the north east corner of the new building.

(n) the impact on, and any proposed improvements to, the public domain;

(o) the impact on any special character area;

(p) achieving appropriate interfaces at ground level between the new building and the public domain;

(q) excellence and integration of landscape design;

The response to items (n), (o), (p) and (q) is combined below.

The key principles of the Landscape design are to:

1. improve pedestrian connectivity to the Ross St entry, Science Road and the broader campus
2. create a series of flexible public spaces adjacent to the building, notable the upper courtyard between FASS and the RD Watts building and the lower forecourt to the west
3. respond to the overall landscape setting and master plan for the campus
4. respect the existing heritage RD Watts building, surrounded in a respectful curtilage
5. integrate Aboriginal and Torres Strait islander culture and story into the design as part of the University of Sydney's Wingara Mura strategy.

The overall design aims to deliver more public open space to the campus than currently exists in its current built form.