

NOTES

ANY ELECTRONIC FILE IS PROVIDED WITHOUT WARRANTY AND SHOULD BE USED ONLY IN CONJUNCTION WITH THE SUPPLIED PDF/PAPER COPY OF THIS PLAN.

NO BOUNDARY SURVEY HAS BEEN UNDERTAKEN. BEARINGS, DIMENSIONS AND AREA ARE FROM TITLE ONLY AND ARE SUBJECT TO CONFIRMATION BY BOUNDARY SURVEY.

DIMENSIONS AND AREA(S) SHOWN ARE APPROXIMATE ONLY AND ARE SUBJECT TO CONFIRMATION BY BOUNDARY SURVEY.

SERVICES SHOWN ARE INDICATIVE ONLY. POSITIONS ARE BASED ON SURFACE INDICATOR(S) LOCATED DURING FIELD SURVEY. CONFIRMATION OF THE EXACT POSITION SHOULD BE MADE TO THE RELEVANT AUTHORITIES PRIOR TO ANY EXCAVATION WORK. OTHER SERVICES MAY EXIST WHICH ARE NOT SHOWN.

LEVELS ARE BASED ON AUSTRALIAN HEIGHT DATUM (AHD) USING PM 56540 WITH RL OF 24.520m (ACC LB/L2) LOCATED AT CNR PARRAMATTA ROAD & ROSS STREET.

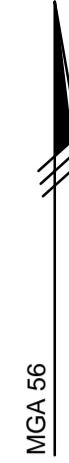
ORIGIN OF CO-ORDINATES SSM 46144 AT INTERSECTION OF PARRAMATTA ROAD & ROSS STREET WITH MGA CO-ORDINATE VALUES OF E332122671 N6249090.930

RIDGE, EAVE & GUTTER HEIGHTS HAVE BEEN OBTAINED BY AN INDIRECT METHOD AND ARE ACCURATE TO ± 0.05m.

ADJOINING DWELLING, BUILDING HAVE BEEN PLOTTED FOR DIAGRAMMATIC PURPOSES ONLY.

CONTOURS ARE AN INDICATION OF LANDFORM AND SHOULD NOT BE TAKEN IN PREFERENCE TO SPOT LEVELS SHOWN.

CONTOUR INTERVAL 0.5m.



MGA COORDINATES OF CONTROL POINTS

Station	Easting	Northing	Height (AHD)	Description
10008	332103.607	6249085.948	24.495	Bolt in Kerb
16657	332177.962	6249076.195	29.430	Nail in Kerb
20000	332257.784	6249141.376	30.085	Drill Hole in Bitumen Path
30000	332265.011	6249108.611	36.310	Drill Hole in Kerb
40000	332141.724	6249014.099	23.450	Bolt in Kerb
60000	332238.911	6249037.827	29.940	Drill Hole in Path

REVISIONS

No.	DATE	REVISION DETAILS	DRAWN	CHK	APP
A	XX.XX.XXXX	INITIAL VERSION	XXX	XXX	XXX

■ HORIZ. SCALE: 1:300
 ■ VERT. SCALE: N/A @ A1
 ■ COORDINATES: MGA
 ■ DATUM: AHD
 ■ ORIGIN: SSM46144
 ■ ORIGIN: PM56540

SCALE IN METRES AT ORIGINAL REDUCTION RATIO

■ NOTES

■ CLIENT: THE UNIVERSITY OF SYDNEY
 ■ SURVEY: G.D.S. DATE OF SURVEY: 3.3.2015
 ■ DRAWN: N.E.C. DATE OF PLAN: 16.3.2015
 ■ CHECKED: D.W.F. DATE LAST SAVED: 30.03.2015
 ■ APPROVED: D.W.F. DATE APPROVED: 30.3.2015

■ TITLE: DETAIL SURVEY OF PART CAMPERDOWN CAMPUS ROSS STREET, WESTERN AVENUE, SCIENCE ROAD AND PARRAMATTA ROAD, CAMPERDOWN
 ■ DRAWING No: PR125252-SU-001.dwg

■ JOB No: PR125252
 ■ ISSUE: A
 ■ SHEET 1 OF 1 SHEETS
 ■ SIZE: A1



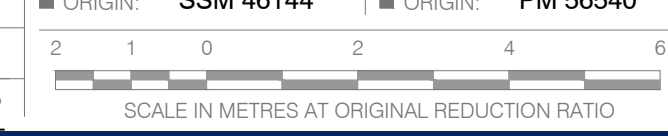
LEGEND

- ⊙ BOLLARD
- A/C AIRCON UNIT
- GARBAGE BIN CENTRE
- ⊕ DRAINAGE JUNCTION MANHOLE
- ⊕ ELEC. SERVICE PILLAR
- ⊕ GAS METER
- ⊕ GAS PIPELINE MARKER
- ⊕ GAS VALVE BOX
- ⊕ GARDEN LIGHT
- ⊕ LIGHT POLE
- ⊕ OPTICAL FIBRE CABLE MARKER
- OFP OPTIC FIB. PIT
- ⊕ SINGLE POST SIGNS
- ⊕ SEWER INSPECTION PIT
- ⊕ SMH SEWER MANHOLE CNTR
- ⊕ SEWERAGE VENT/RAIN
- ⊕ LH SEWER LAMPHOLE
- ⊕ TELEPHONE SINGLE CONCRETE PIT
- ⊕ US UNIDENTIFIED SERVICE PIT
- ⊕ WATER AIR VALVE
- ⊕ FIRE HYDRANT (STANDPIPE)
- ⊕ HYD HYDRANT
- ⊕ WATER METER
- ⊕ STOP VALVE
- ⊕ WATER TAP
- ⊕ IRRIGATION VALVE
- ⊕ DRAINAGE PIT GRATED
- ⊕ DRAINAGE JUNCTION PIT (CONC LID)
- ⊕ EMH ELECTRICITY CABLE MANHOLE
- ⊕ DOUBLE POST SIGN
- ⊕ PARKING METER
- ⊕ TRAFFIC SIGNAL
- ⊕ CONTROL POINT
- ⊕ TREE (TRUNKØ/SPREAD/HEIGHT)

REVISIONS	No.	DATE	REVISION DETAILS	DRAWN	CHK	APP
	A	16.3.2015	INITIAL VERSION	N.E.C.	D.W.F.	XXX

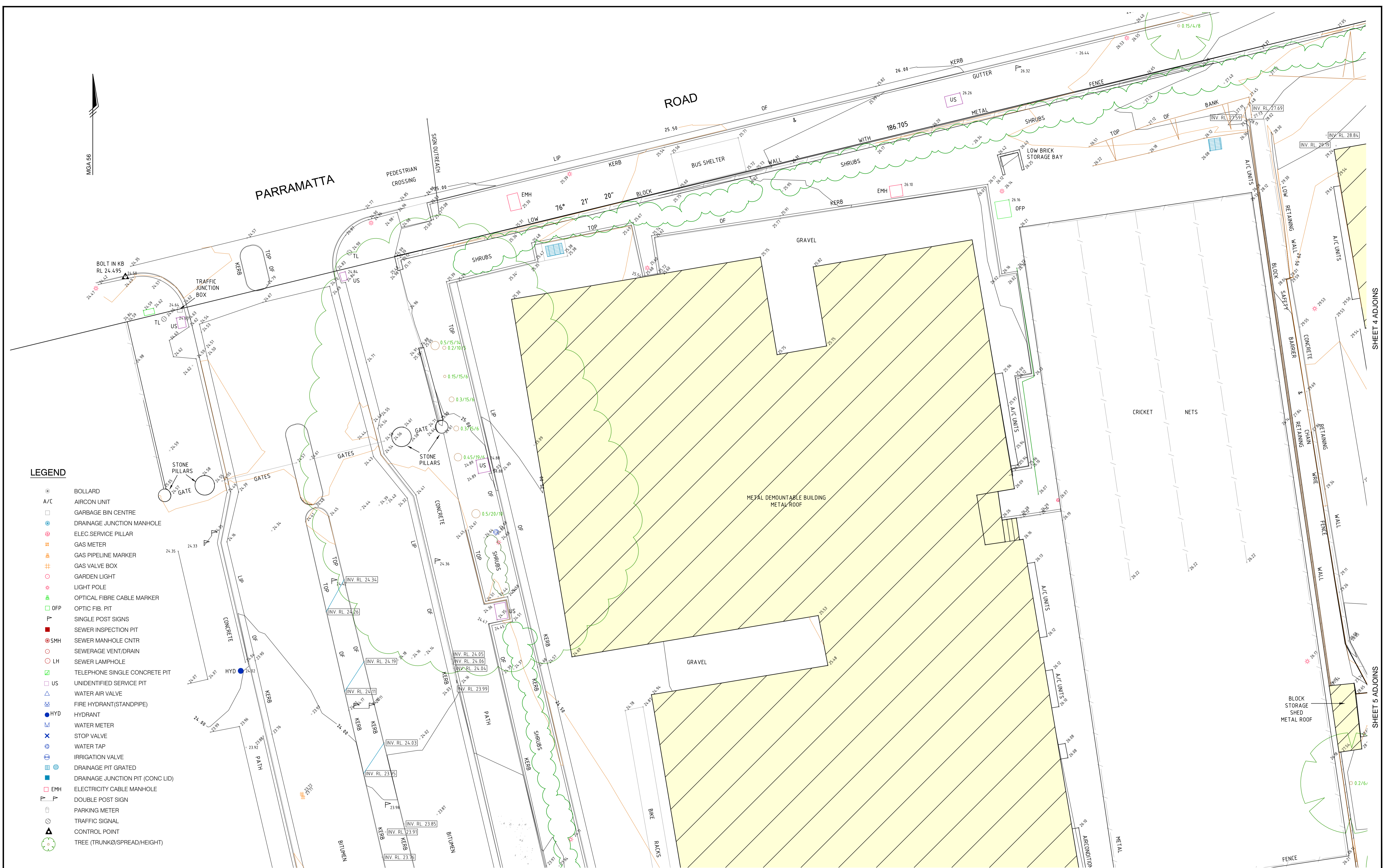
HORIZ. SCALE: 1:100	VERT. SCALE: @ A1
COORDINATES: MGA	DATUM: AHD
ORIGIN: SSM 46144	ORIGIN: PM 56540

NOTES
SEE SHEET 1 FOR NOTES



CLIENT: THE UNIVERSITY OF SYDNEY	
SURVEY: G.D.S.	DATE OF SURVEY: 3.3.2015
DRAWN: N.E.C.	DATE OF PLAN: 16.3.2015
CHECKED: D.W.F.	DATE LAST SAVED: 30.03.2015
APPROVED: D.W.F.	DATE APPROVED: 30.3.2015

TITLE: DETAIL SURVEY OF PART CAMPERDOWN CAMPUS ROSS STREET, WESTERN AVENUE, SCIENCE ROAD AND PARRAMATTA ROAD, CAMPERDOWN	JOB No: PR125252	ISSUE: A
DRAWING No: PR125252-SU-001.dwg	SHEET 2 OF 8 SHEETS	SIZE: A1



LEGEND

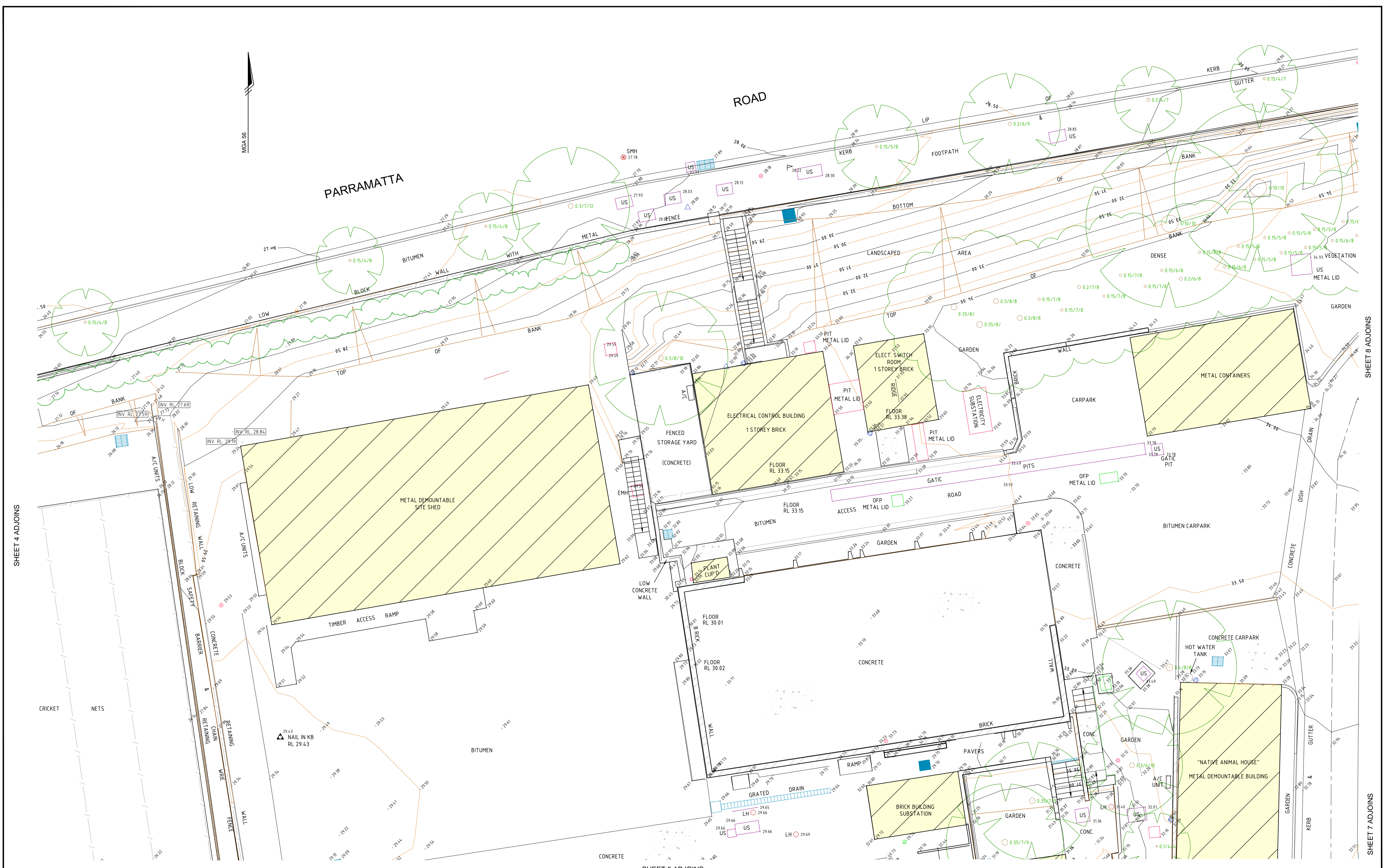
- BOLLARD
- A/C AIRCON UNIT
- GARBAGE BIN CENTRE
- ⊕ DRAINAGE JUNCTION MANHOLE
- ⊕ ELEC.SERVICE PILLAR
- ⊕ GAS METER
- ⊕ GAS PIPELINE MARKER
- ⊕ GAS VALVE BOX
- ⊕ GARDEN LIGHT
- ⊕ LIGHT POLE
- ⊕ OPTICAL FIBRE CABLE MARKER
- ⊕ OFF OPTIC FIB PIT
- ⊕ SINGLE POST SIGNS
- ⊕ SEWER INSPECTION PIT
- ⊕ SMH SEWER MANHOLE CNTR
- ⊕ SEWERAGE VENT/DRAIN
- ⊕ LH SEWER LAMPHOLE
- ⊕ TELEPHONE SINGLE CONCRETE PIT
- ⊕ UNIDENTIFIED SERVICE PIT
- ⊕ WATER AIR VALVE
- ⊕ FIRE HYDRANT(STANDPIPE)
- HYD HYDRANT
- ⊕ WATER METER
- ⊕ STOP VALVE
- ⊕ WATER TAP
- ⊕ IRRIGATION VALVE
- ⊕ DRAINAGE PIT GRATED
- ⊕ DRAINAGE JUNCTION PIT (CONC LID)
- ⊕ EMH ELECTRICITY CABLE MANHOLE
- ⊕ DOUBLE POST SIGN
- ⊕ PARKING METER
- ⊕ TRAFFIC SIGNAL
- ⊕ CONTROL POINT
- ⊕ TREE (TRUNK/SPREAD/HEIGHT)

SHEET 2 ADJOINS

SHEET 4 ADJOINS

SHEET 5 ADJOINS

<p>REVISIONS</p> <table border="1" style="width: 100%; border-collapse: collapse;"> <thead> <tr> <th>No.</th> <th>DATE</th> <th>REVISION DETAILS</th> <th>DRAWN</th> <th>CHK</th> <th>APP</th> </tr> </thead> <tbody> <tr> <td>A</td> <td>16.3.2015</td> <td>INITIAL VERSION</td> <td></td> <td></td> <td></td> </tr> </tbody> </table>	No.	DATE	REVISION DETAILS	DRAWN	CHK	APP	A	16.3.2015	INITIAL VERSION				<p>HORIZ. SCALE: 1:100</p> <p>VERT. SCALE: @ A1</p> <p>COORDINATES: MGA DATUM: AHD</p> <p>ORIGIN: SSM 46144 ORIGIN: PM 56540</p> <p>SCALE IN METRES AT ORIGINAL REDUCTION RATIO</p>	<p>NOTES</p> <p>SEE SHEET 1 FOR NOTES</p>	<p>CLIENT: THE UNIVERSITY OF SYDNEY</p> <p>SURVEY: G.D.S. DATE OF SURVEY: 3.3.2015</p> <p>DRAWN: N.E.C. DATE OF PLAN: 16.3.2015</p> <p>CHECKED: D.W.F. DATE LAST SAVED: 30.03.2015</p> <p>APPROVED: D.W.F. DATE APPROVED: 30.3.2015</p>	<p>TITLE: DETAIL SURVEY OF PART CAMPERDOWN CAMPUS ROSS STREET, WESTERN AVENUE, SCIENCE ROAD AND PARRAMATTA ROAD, CAMPERDOWN</p> <p>JOB No: PR125252</p> <p>ISSUE: A</p> <p>DRAWING No: PR125252-SU-001.dwg</p> <p>SHEET 3 OF 8 SHEETS</p> <p>SIZE: A1</p>	<p>Copyright © RPS GROUP PLC. INFORMATION CONTAINED IN THIS DRAWING / FILE IS THE COPYRIGHT OF RPS GROUP PLC. COPYING OR USING THIS DATA IN WHOLE OR PART, IN ANY FORMAT, WITHOUT PERMISSION INFRINGES COPYRIGHT. THIS DOCUMENT IN BOTH ELECTRONIC AND HARD COPY FORMAT IS AND SHALL REMAIN THE PROPERTY OF RPS GROUP PLC. THE INFORMATION MAY ONLY BE USED FOR THE PURPOSE FOR WHICH IT WAS COMMISSIONED AND IN ACCORDANCE WITH THE TERMS OF ENGAGEMENT FOR THE COMMISSION. UNAUTHORISED USE OF THIS INFORMATION IN ANY FORM WHATSOEVER IS PROHIBITED.</p> <p>RPS AUSTRALIA EAST PTY LTD (ABN 44 140 292 762) LEVEL 9 17 YORK STREET SYDNEY NSW 2000 GPO BOX 4401 SYDNEY NSW 2001 T: 02 9248 9800 F: 02 9248 9810 www.rpsgroup.com.au</p> <p>creativepeople making a difference</p> <p>RPS</p>
No.	DATE	REVISION DETAILS	DRAWN	CHK	APP												
A	16.3.2015	INITIAL VERSION															



REVISIONS No. DATE REVISION DETAILS DRAWN CHK APP			HORIZ. SCALE: 1:100		VERT. SCALE: @ A1		NOTES SEE SHEET 1 FOR NOTES		CLIENT: THE UNIVERSITY OF SYDNEY		TITLE: DETAIL SURVEY OF PART CAMPERDOWN CAMPUS ROSS STREET, WESTERN AVENUE, SCIENCE ROAD AND PARRAMATTA ROAD, CAMPERDOWN		JOB No: PR125252		ISSUE: A	
A 16.3.2015 INITIAL VERSION N.E.C. D.W.F. XXX			COORDINATES: MGA		DATUM: AHD		SCALE IN METRES AT ORIGINAL REDUCTION RATIO 0 2 4 6		DATE OF SURVEY: 3.3.2015		DATE OF PLAN: 16.3.2015		www.dial100.com.au DIAL100 BEFORE YOU DIG		SIZE: A1	
No. DATE REVISION DETAILS DRAWN CHK APP			ORIGIN: SSM 46144		ORIGIN: PM 56540		DATE LAST SAVED: 30.03.2015		DATE APPROVED: 30.3.2015		DRAWING No: PR125252-SU-001.dwg		SHEET 4 OF 8 SHEETS		RPS creativepeople making a difference	

COPYRIGHT © RPS GROUP PLC. INFORMATION CONTAINED IN THIS DRAWING / FILE IS THE COPYRIGHT OF RPS GROUP PLC. COPYING OR USING THIS DATA IN WHOLE OR PART, IN ANY FORMAT, WITHOUT PERMISSION INFRINGES COPYRIGHT. THIS DOCUMENT IN BOTH ELECTRONIC AND HARD COPY FORMAT IS AND SHALL REMAIN THE PROPERTY OF RPS GROUP PLC. THE INFORMATION MAY ONLY BE USED FOR THE PURPOSE FOR WHICH IT WAS COMMISSIONED AND IN ACCORDANCE WITH THE TERMS OF ENGAGEMENT FOR THE COMMISSION. UNAUTHORIZED USE OF THIS INFORMATION IN ANY FORM WHATSOEVER IS PROHIBITED.

RPS AUSTRALIA EAST PTY LTD (ABN 44 140 292 762)
 LEVEL 9 17 YORK STREET SYDNEY NSW 2000 GPO BOX 4401 SYDNEY NSW 2001
 T: 02 9248 9800 F: 02 9248 9810 www.rpsgroup.com.au

THIS IS A COLOURED PLAN. REPRODUCTION IN COLOUR ONLY.

P:\PR125252 - New FASS Building Adaptive Redevelopment\10 - Drafting\Survey\2. Detail\PR125252-SU-001.dwg 30.03.2015 3:24 PM



LEGEND

- BOLLARD
- AIRCON UNIT
- GARBAGE BIN CENTRE
- DRAINAGE JUNCTION MANHOLE
- ELEC. SERVICE PILLAR
- GAS METER
- GAS PIPELINE MARKER
- GAS VALVE BOX
- GARDEN LIGHT
- LIGHT POLE
- OPTICAL FIBRE CABLE MARKER
- OFFP
- OPTIC FIB. PIT
- SINGLE POST SIGNS
- SEWER INSPECTION PIT
- SMH SEWER MANHOLE CNTR
- SEWERAGE VENT/RAIN
- LH SEWER LAMPHOLE
- TELEPHONE SINGLE CONCRETE PIT
- UNIDENTIFIED SERVICE PIT
- US WATER AIR VALVE
- FIRE HYDRANT (STANDPIPE)
- HYD HYDRANT
- WATER METER
- STOP VALVE
- WATER TAP
- IRRIGATION VALVE
- DRAINAGE PIT GRATED
- DRAINAGE JUNCTION PIT (CONC LID)
- EMH ELECTRICITY CABLE MANHOLE
- DOUBLE POST SIGN
- PARKING METER
- TRAFFIC SIGNAL
- CONTROL POINT
- TREE (TRUNK/SPREAD/HEIGHT)

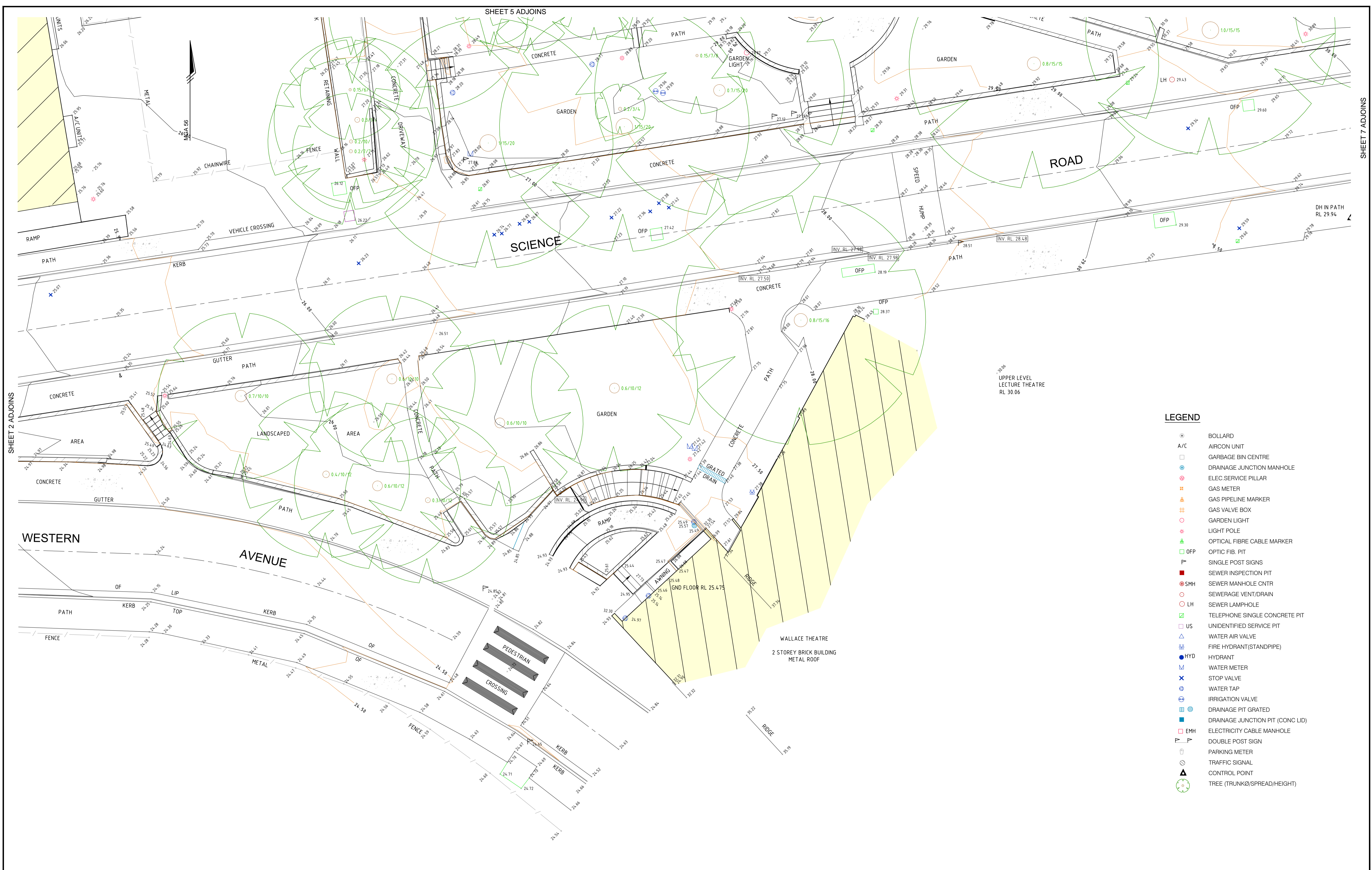
REVISIONS No. DATE REVISION DETAILS A 16.3.2015 INITIAL VERSION N.E.C. D.W.F. XXX DRAWN CHK APP		HORIZ. SCALE: 1:100 VERT. SCALE: @ A1 COORDINATES: MGA DATUM: AHD ORIGIN: SSM 46144 ORIGIN: PM 56540 SCALE IN METRES AT ORIGINAL REDUCTION RATIO	NOTES SEE SHEET 1 FOR NOTES	CLIENT: THE UNIVERSITY OF SYDNEY SURVEY: G.D.S. DATE OF SURVEY: 3.3.2015 DRAWN: N.E.C. DATE OF PLAN: 16.3.2015 CHECKED: D.W.F. DATE LAST SAVED: 30.03.2015 APPROVED: D.W.F. DATE APPROVED: 30.3.2015	TITLE: DETAIL SURVEY OF PART CAMPERDOWN CAMPUS ROSS STREET, WESTERN AVENUE, SCIENCE ROAD AND PARRAMATTA ROAD, CAMPERDOWN DRAWING No: PR125252-SU-001.dwg	JOB No: PR125252 www.dial100.com.au DIAL100 BEFORE YOU DIG SHEET 5 OF 8 SHEETS SIZE A1
---	--	--	--------------------------------	--	--	--

COPYRIGHT © RPS GROUP PLC. INFORMATION CONTAINED IN THIS DRAWING / FILE IS THE COPYRIGHT OF RPS GROUP PLC. COPYING OR USING THIS DATA IN WHOLE OR PART, IN ANY FORMAT, WITHOUT PERMISSION INFRINGES COPYRIGHT. © THIS DOCUMENT IN BOTH ELECTRONIC AND HARD COPY FORMAT IS AND SHALL REMAIN THE PROPERTY OF RPS GROUP PLC. THE INFORMATION MAY ONLY BE USED FOR THE PURPOSE FOR WHICH IT WAS COMMISSIONED AND IN ACCORDANCE WITH THE TERMS OF ENGAGEMENT FOR THE COMMISSION. UNAUTHORISED USE OF THIS INFORMATION IN ANY FORM WHATSOEVER IS PROHIBITED.

RPS AUSTRALIA EAST PTY LTD (ABN 44 140 292 762)
 LEVEL 9 17 YORK STREET SYDNEY NSW 2000 GPO BOX 4401 SYDNEY NSW 2001
 T: 02 9248 9800 F: 02 9248 9810 www.rpsgroup.com.au

THIS IS A COLOURED PLAN. REPRODUCTION IN COLOUR ONLY.

P:\PR125252 - New FASS Building Adaptive Redevelopment\10 - Drafting\Survey\2. Detail\PR125252-SU-001.dwg 30.03.2015 3:25 PM



SHEET 2 ADJOINS

SHEET 5 ADJOINS

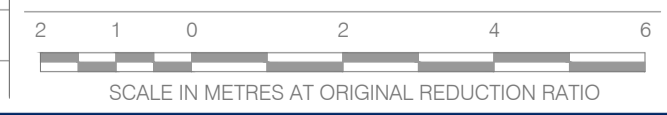
SHEET 7 ADJOINS

- LEGEND**
- ⊙ BOLLARD
 - A/C AIRCON UNIT
 - GARBAGE BIN CENTRE
 - ⊕ DRAINAGE JUNCTION MANHOLE
 - ⊕ ELEC. SERVICE PILLAR
 - ⊕ GAS METER
 - ⊕ GAS PIPELINE MARKER
 - ⊕ GAS VALVE BOX
 - ⊕ GARDEN LIGHT
 - ⊕ LIGHT POLE
 - ⊕ OPTICAL FIBRE CABLE MARKER
 - OFFP
 - ⊕ SINGLE POST SIGNS
 - ⊕ SEWER INSPECTION PIT
 - ⊕ SMH SEWER MANHOLE CNTR
 - ⊕ SEWERAGE VENT/RAIN
 - ⊕ LH SEWER LAMPHOLE
 - ⊕ TELEPHONE SINGLE CONCRETE PIT
 - US UNIDENTIFIED SERVICE PIT
 - ⊕ WATER AIR VALVE
 - ⊕ FIRE HYDRANT (STANDPIPE)
 - ⊕ HYD HYDRANT
 - ⊕ WATER METER
 - ⊕ STOP VALVE
 - ⊕ WATER TAP
 - ⊕ IRRIGATION VALVE
 - ⊕ DRAINAGE PIT GRATED
 - ⊕ DRAINAGE JUNCTION PIT (CONC LID)
 - ⊕ EMH ELECTRICITY CABLE MANHOLE
 - ⊕ DOUBLE POST SIGN
 - ⊕ PARKING METER
 - ⊕ TRAFFIC SIGNAL
 - ⊕ CONTROL POINT
 - ⊕ TREE (TRUNKØ/SPREAD/HEIGHT)

REVISIONS			
No.	DATE	REVISION DETAILS	APP
A	16.3.2015	INITIAL VERSION	N.E.C. D.W.F. XXX

HORIZ. SCALE:	1:100	VERT. SCALE:	@ A1
COORDINATES:	MGA	DATUM:	AHD
ORIGIN:	SSM 46144	ORIGIN:	PM 56540

NOTES
SEE SHEET 1 FOR NOTES



CLIENT:	THE UNIVERSITY OF SYDNEY
SURVEY:	G.D.S. DATE OF SURVEY: 3.3.2015
DRAWN:	N.E.C. DATE OF PLAN: 16.3.2015
CHECKED:	D.W.F. DATE LAST SAVED: 30.03.2015
APPROVED:	D.W.F. DATE APPROVED: 30.3.2015

TITLE
DETAIL SURVEY OF PART CAMPERTOWN CAMPUS ROSS STREET, WESTERN AVENUE, SCIENCE ROAD AND PARRAMATTA ROAD, CAMPERTOWN

DRAWING No: PR125252-SU-001.dwg

JOB No: PR125252
ISSUE: A

www.dial100.com.au
DIAL100
BEFORE YOU DIG

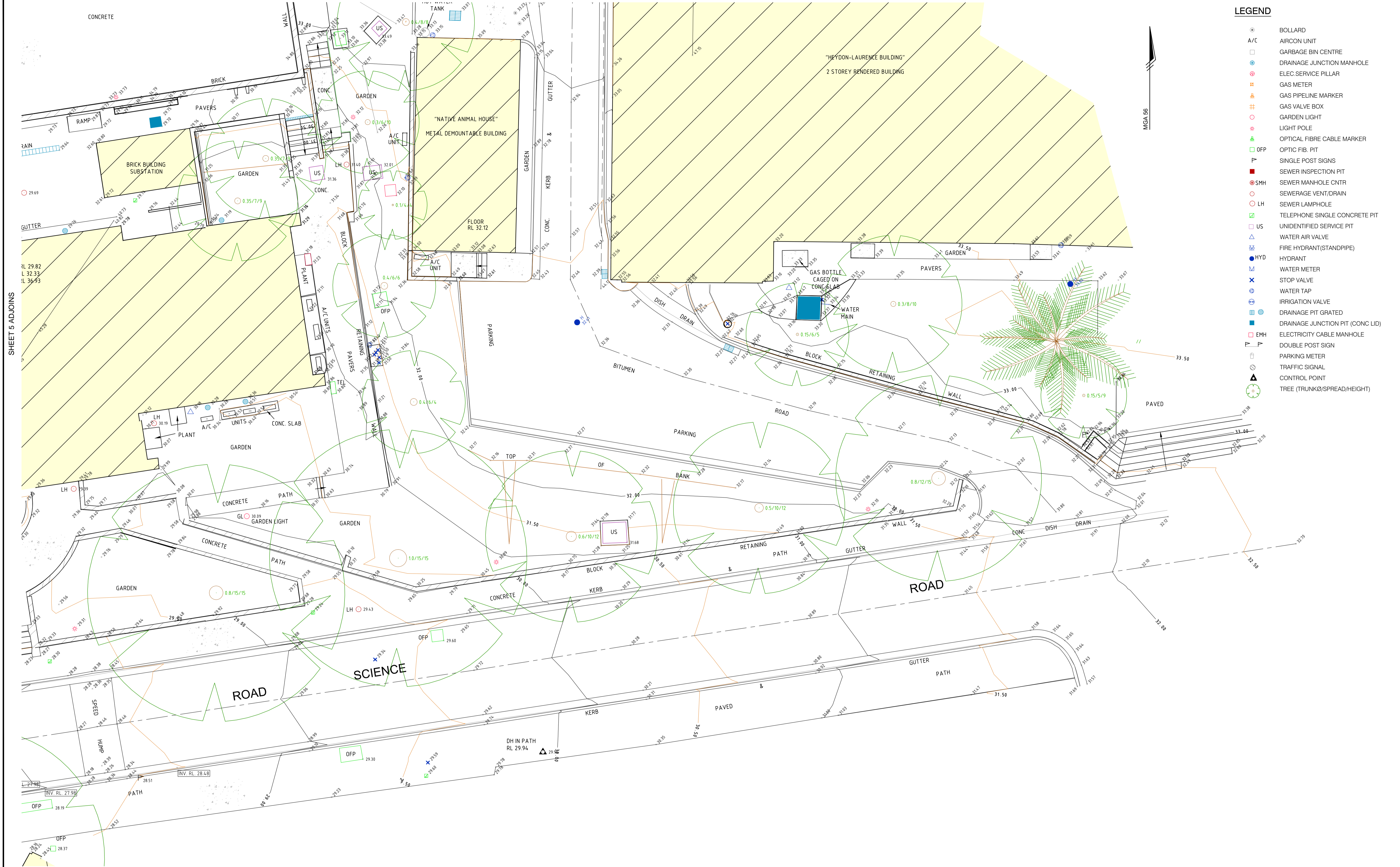
SHEET 6 OF 8 SHEETS SIZE A1

LEGEND

- BOLLARD
- A/C AIRCON UNIT
- GARBAGE BIN CENTRE
- ⊕ DRAINAGE JUNCTION MANHOLE
- ⊕ ELEC.SERVICE PILLAR
- ⊕ GAS METER
- ⊕ GAS PIPELINE MARKER
- ⊕ GAS VALVE BOX
- GARDEN LIGHT
- ⊕ LIGHT POLE
- ⊕ OPTICAL FIBRE CABLE MARKER
- OFF
- ⊕ SINGLE POST SIGNS
- ⊕ SEWER INSPECTION PIT
- ⊕ SMH SEWER MANHOLE CNTR
- SEWERAGE VENT/RAIN
- LH SEWER LAMPHOLE
- ⊕ TELEPHONE SINGLE CONCRETE PIT
- US UNIDENTIFIED SERVICE PIT
- ⊕ WATER AIR VALVE
- ⊕ FIRE HYDRANT(STANDPIPE)
- HYD HYDRANT
- ⊕ WATER METER
- ⊕ STOP VALVE
- ⊕ WATER TAP
- ⊕ IRRIGATION VALVE
- ⊕ DRAINAGE PIT GRATED
- ⊕ DRAINAGE JUNCTION PIT (CONC LID)
- ⊕ EMH ELECTRICITY CABLE MANHOLE
- ⊕ DOUBLE POST SIGN
- ⊕ PARKING METER
- ⊕ TRAFFIC SIGNAL
- ⊕ CONTROL POINT
- TREE (TRUNK&SPREAD/HEIGHT)

SHEET 5 ADJOINS

SHEET 6 ADJOINS



REVISIONS	DATE	REVISION DETAILS	DRAWN	CHK	APP
A	16.3.2015	INITIAL VERSION			

HORIZ. SCALE: 1:100

VERT. SCALE: @ A1

COORDINATES: MGA DATUM: AHD

ORIGIN: SSM 46144 ORIGIN: PM 56540

SCALE IN METRES AT ORIGINAL REDUCTION RATIO

NOTES: SEE SHEET 1 FOR NOTES

CLIENT: THE UNIVERSITY OF SYDNEY

SURVEY: G.D.S. DATE OF SURVEY: 3.3.2015

DRAWN: N.E.C. DATE OF PLAN: 16.3.2015

CHECKED: D.W.F. DATE LAST SAVED: 30.03.2015

APPROVED: D.W.F. DATE APPROVED: 30.3.2015

TITLE: DETAIL SURVEY OF PART CAMPERTOWN CAMPUS ROSS STREET, WESTERN AVENUE, SCIENCE ROAD AND PARRAMATTA ROAD, CAMPERTOWN

DRAWING No: PR125252-SU-001.dwg

ISSUE: A

JOB No: PR125252

ISSUE: A

SHEET 7 OF 8 SHEETS

SIZE: A1

CREATIVEPEOPLE making a difference

RPS

THIS IS A COLOURED PLAN. REPRODUCTION IN COLOUR ONLY.

- ### LEGEND
- BOLLARD
 - A/C AIRCON UNIT
 - GARBAGE BIN CENTRE
 - ⊕ DRAINAGE JUNCTION MANHOLE
 - ⊕ ELEC.SERVICE PILLAR
 - ⊕ GAS METER
 - ⊕ GAS PIPELINE MARKER
 - ⊕ GAS VALVE BOX
 - GARDEN LIGHT
 - ⊕ LIGHT POLE
 - ⊕ OPTICAL FIBRE CABLE MARKER
 - OFFP OPTIC FIB. PIT
 - ⊕ SINGLE POST SIGNS
 - ⊕ SEWER INSPECTION PIT
 - ⊕ SMH SEWER MANHOLE CNTR
 - SEWERAGE VENT/DRAIN
 - LH SEWER LAMPHOLE
 - ⊕ TELEPHONE SINGLE CONCRETE PIT
 - US UNIDENTIFIED SERVICE PIT
 - △ WATER AIR VALVE
 - ⊕ FIRE HYDRANT(STANDPIPE)
 - HYD HYDRANT
 - ⊕ WATER METER
 - ⊕ STOP VALVE
 - ⊕ WATER TAP
 - ⊕ IRRIGATION VALVE
 - ⊕ DRAINAGE PIT GRATED
 - ⊕ DRAINAGE JUNCTION PIT (CONC LID)
 - ⊕ EMH ELECTRICITY CABLE MANHOLE
 - ⊕ DOUBLE POST SIGN
 - ⊕ PARKING METER
 - ⊕ TRAFFIC SIGNAL
 - ⊕ CONTROL POINT
 - TREE (TRUNKØ/SPREAD/HEIGHT)



REV.	DATE	REVISION DETAILS	DRAWN	CHK	APP
A	16.3.2015	INITIAL VERSION	N.E.C.	D.W.F.	XXX

■ HORIZ. SCALE: 1:100
 ■ VERT. SCALE: @ A1
 ■ COORDINATES: MGA
 ■ DATUM: AHD
 ■ ORIGIN: SSM 46144
 ■ ORIGIN: PM 56540
 SCALE IN METRES AT ORIGINAL REDUCTION RATIO

■ NOTES
 SEE SHEET 1 FOR NOTES

CLIENT: THE UNIVERSITY OF SYDNEY
TITLE: DETAIL SURVEY OF PART CAMPERDOWN CAMPUS ROSS STREET, WESTERN AVENUE, SCIENCE ROAD AND PARRAMATTA ROAD, CAMPERDOWN

SURVEY: G.D.S. DATE OF SURVEY: 3.3.2015
DRAWN: N.E.C. DATE OF PLAN: 16.3.2015
CHECKED: D.W.F. DATE LAST SAVED: 30.03.2015
APPROVED: D.W.F. DATE APPROVED: 30.3.2015

JOB No: PR125252
ISSUE: A
DATE: 30.03.2015
SCALE: A1
SHEET: 8 OF 8 SHEETS

COPYRIGHT © RPS GROUP PLC
 INFORMATION CONTAINED IN THIS DRAWING / FILE IS THE COPYRIGHT OF RPS GROUP PLC. COPYING OR USING THIS DATA IN WHOLE OR PART, IN ANY FORMAT, WITHOUT PERMISSION INFRINGES COPYRIGHT.
 THIS DOCUMENT IN BOTH ELECTRONIC AND HARDCOPY FORMAT IS AND SHALL REMAIN THE PROPERTY OF RPS GROUP PLC. THE INFORMATION MAY ONLY BE USED FOR THE PURPOSE FOR WHICH IT WAS COMMISSIONED AND IN ACCORDANCE WITH THE TERMS OF ENGAGEMENT FOR THE COMMISSION. UNAUTHORISED USE OF THIS INFORMATION IN ANY FORM WHATSOEVER IS PROHIBITED.

RPS AUSTRALIA EAST PTY LTD (ABN 44 140 292 762)
 LEVEL 9 17 YORK STREET SYDNEY NSW 2000 GPO BOX 4401 SYDNEY NSW 2001
 T: 02 9248 9800 F: 02 9248 9810 www.rpsgroup.com.au

THIS IS A COLOURED PLAN.
 REPRODUCTION IN COLOUR ONLY.

creativepeople making a difference
RPS

P:\PR125252 - New FASS Building Adaptive Redevelopment\10 - Drafting\Survey2. Detail\PR125252-SU-001.dwg 30.03.2015 3:25 PM