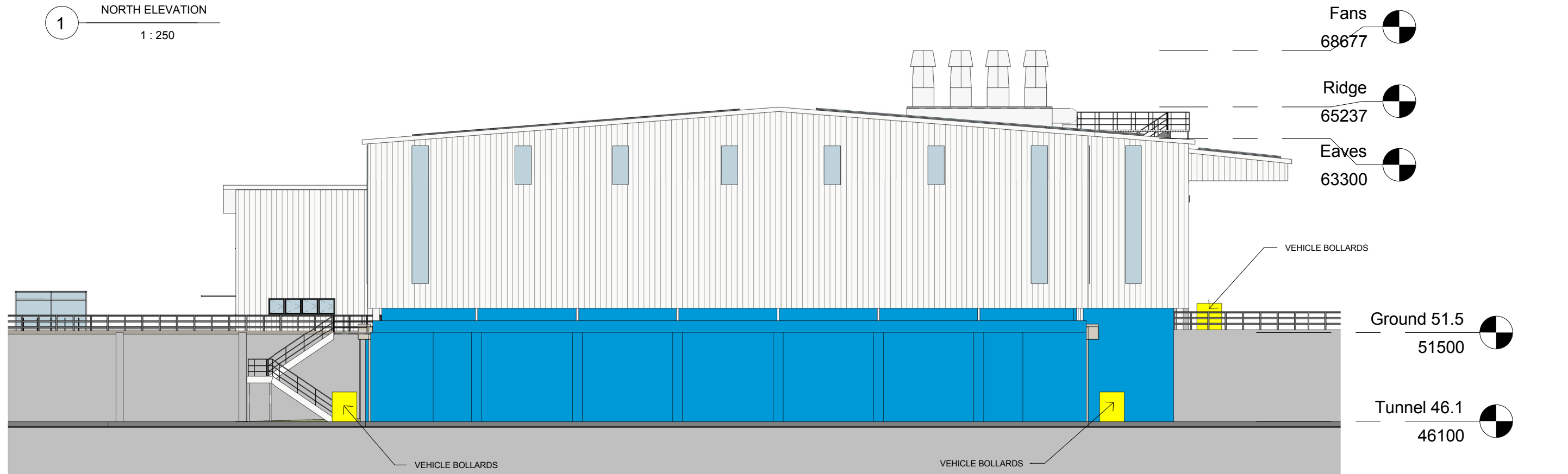




1 NORTH ELEVATION
1 : 250



2 SOUTH ELEVATION
1 : 250

NOTES:

- Cladding:**
External sheet, walls: 0.42BMT Colourbond Trimdeck vertical trapezoidal metal sheeting, incorporating flush louvres and steel doors as required to match adjacent cladding.
- External sheet, Roof:** As wall construction incorporating 50mm insulation (perforated anticon foil backed fibreglass or equivalent) & safety wire mesh, & incorporate roof lights & PV panels.
- External sheet:** Cladding to roof & walls with integral translucent strip windows & louvres, to be finished from the Colorbond Colour Range or similar approved.
- Doors:**
Steel & Glazed doors, metal louvres & chimney to be finished Polyester powder coating to the same RAL colours as adjacent cladding.
- Cladding to offices/welfare:**
To be insulated built up system, cladding profile & colour to match as rest of building.
- Windows:**
Polyester powder coated double glazed windows with 50% opening lights, utilising "solarglass" to avoid solar gain, & projecting solar shading to North & East elevations.
- Finishes Key:**
1 - Wall cladding to be Colorbond "Surfmist" colour.
2 - Window frames, door frames & Roller Shutter Doors - highlight colour to be Colorbond "Surfmist".
3 - Fascia gutters, downpipes, flue & roof to be Colourbond "Surfmist" colour.
4 - Below cladding to be fair faced concrete finish painted Dulux "Cleanaway Blue".
- Roof Maintenance:**
Roof to be fitted with suitable fall-arrest cable system with access walkways, or similar approved, for safe access to maintain, clean & inspect the roof, rooflights PV panels & guttering.
- Fall-arrest system to comply with all current legislation, and be installed such that the roof does not leak.
- Access to be by trained personnel, with equipment stored within the office building.

Revision	Drawn By	Chkd By	Date	Comments
0	PS	LN	19.07.16	DEVELOPMENT CONSENT
<div><div><p>CLEANAWAY Making a sustainable future possible</p></div><div><p>SLR 2 LINCOLN STREET LANE COVE NEW SOUTH WALES 2066 AUSTRALIA T: 61 2 9427 8100 F: 61 2 9427 8200 www.slrconsulting.com</p></div></div>				

Client CLEANAWAY WASTE MANAGEMENT LTD.		
Project ERSKINE PARK RMF STAGE 1 - WASTE TRANSFER STATION		
Drawing NORTH & SOUTH ELEVATIONS		
Date JULY 2016	Drawing Number 023	Revision 0
Scale 1 : 250 @ A3	DEVELOPMENT CONSENT	