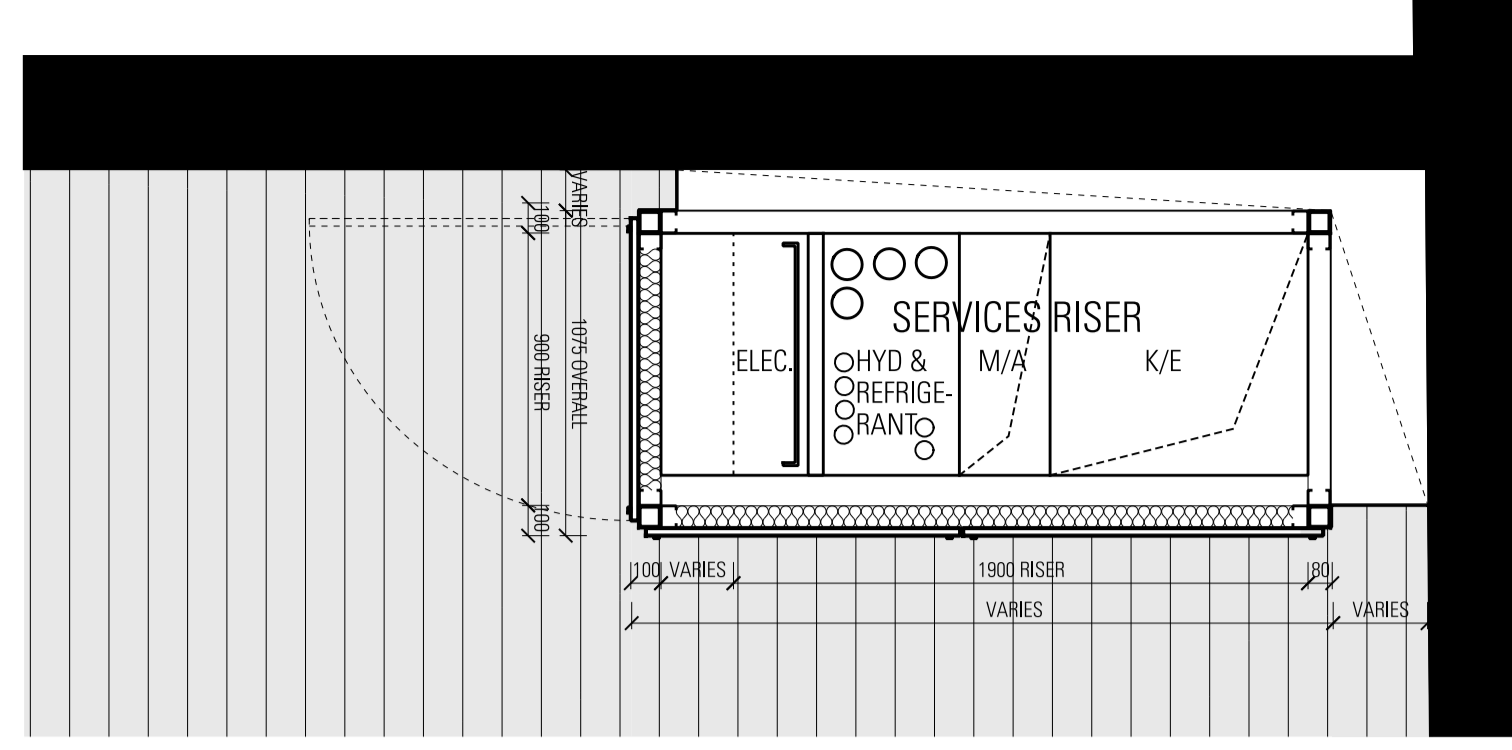
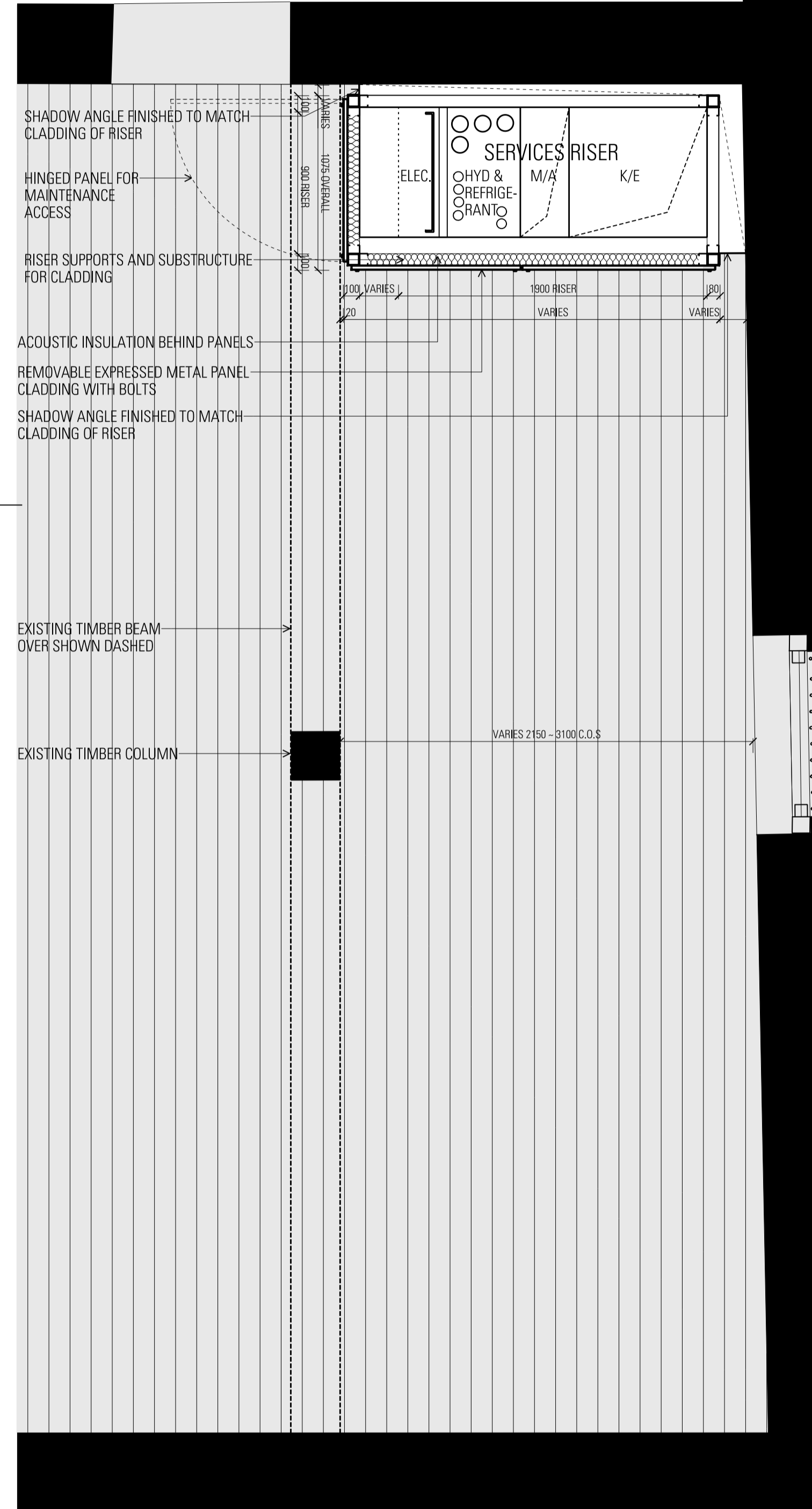


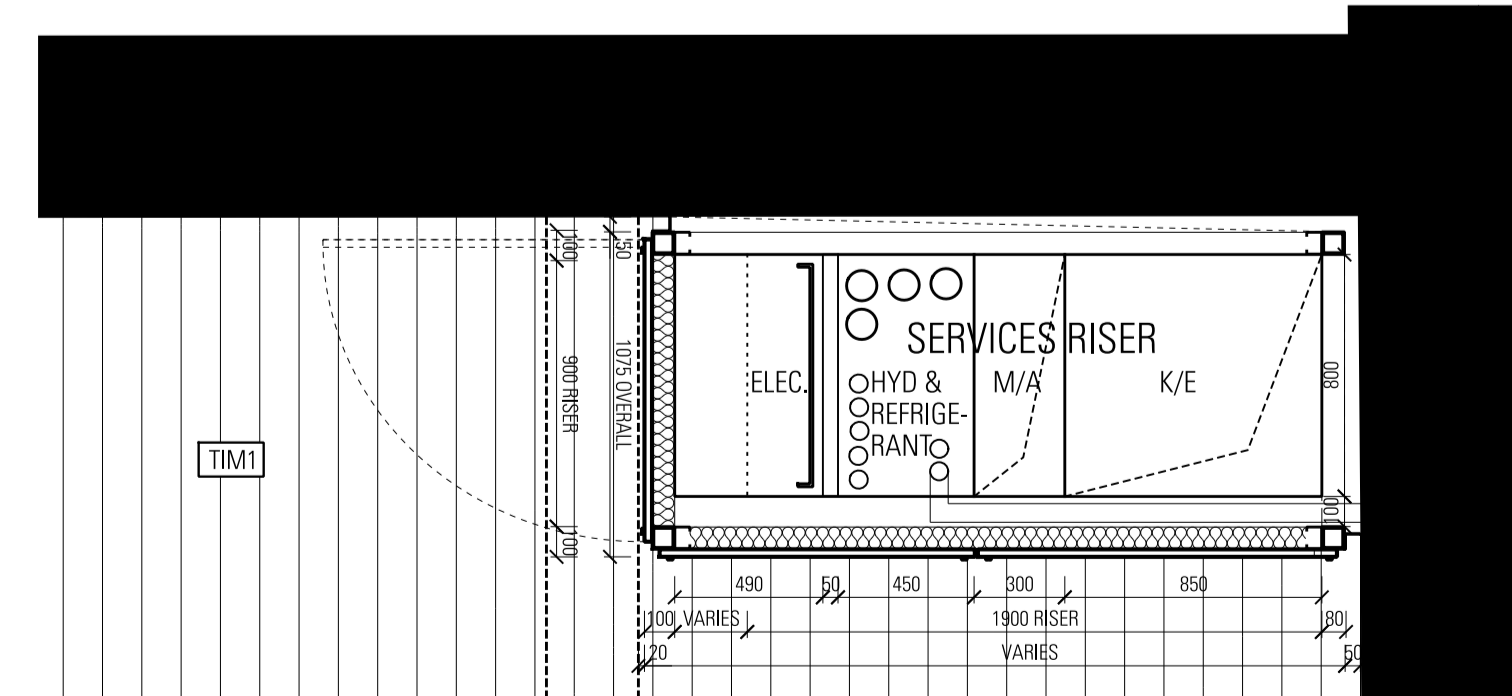
01 LEVEL 3 PLAN



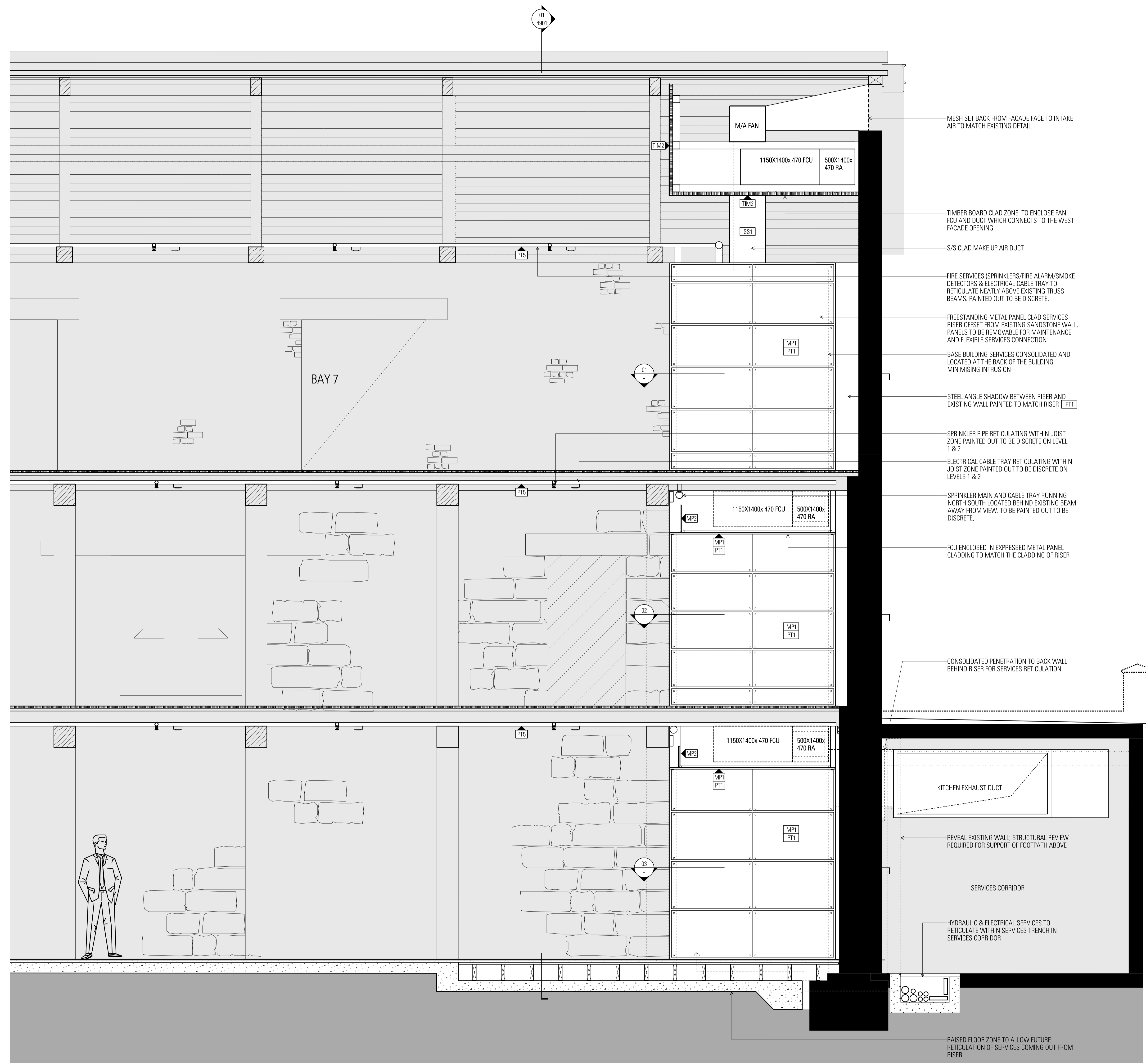
02 HICKSON ROAD LEVEL PLAN



03 GROUND LEVEL PLAN



04 EAST WEST SECTION



MESH SET BACK FROM FACADE FACE TO INTAKE AIR TO MATCH EXISTING DETAIL.

TIMBER BOARD CLAD ZONE TO ENCLOSE FAN, FCU AND DUCT WHICH CONNECTS TO THE WEST FACADE OPENING

S/S CLAD MAKE UP AIR DUCT

FIRE SERVICES (SPRINKLERS/FIRE ALARM/SMOKE DETECTORS & ELECTRICAL CABLE TRAY TO RETICULATE NEATLY ABOVE EXISTING TRUSS BEAMS, PAINTED OUT TO BE DISCRETE.

FREESTANDING METAL PANEL CLAD SERVICES RISER OFFSET FROM EXISTING SANDSTONE WALL PANELS TO BE REMOVABLE FOR MAINTENANCE AND FLEXIBLE SERVICES CONNECTION

BASE BUILDING SERVICES CONSOLIDATED AND LOCATED AT THE BACK OF THE BUILDING MINIMISING INTRUSION

STEEL ANGLE SHADOW BETWEEN RISER AND EXISTING WALL PAINTED TO MATCH RISER

SPRINKLER PIPE RETICULATING WITHIN JOIST ZONE PAINTED OUT TO BE DISCRETE ON LEVEL 1 & 2

ELECTRICAL CABLE TRAY RETICULATING WITHIN JOIST ZONE PAINTED OUT TO BE DISCRETE ON LEVELS 1 & 2

SPRINKLER MAIN AND CABLE TRAY RUNNING NORTH SOUTH LOCATED BEHIND EXISTING BEAM AWAY FROM VIEW, TO BE PAINTED OUT TO BE DISCRETE.

FCU ENCLOSED IN EXPRESSED METAL PANEL CLADDING TO MATCH THE CLADDING OF RISER

CONSOLIDATED PENETRATION TO BACK WALL BEHIND RISER FOR SERVICES RETICULATION

KITCHEN EXHAUST DUCT

REVEAL EXISTING WALL: STRUCTURAL REVIEW REQUIRED FOR SUPPORT OF FOOTPATH ABOVE

SERVICES CORRIDOR

HYDRAULIC & ELECTRICAL SERVICES TO RETICULATE WITHIN SERVICES TRENCH IN SERVICES CORRIDOR

RAISED FLOOR ZONE TO ALLOW FUTURE RETICULATION OF SERVICES COMING OUT FROM RISER.

Architect  
**JPW JOHNSON PILTON WALKER**  
Johnson Pilton Walker Pty Ltd ACN 095 778 886  
Level 10, Plaza Building, Australia Square  
95 Pitt Street  
Sydney NSW 2000, Australia  
Telephone +61 2 9259 5900  
Facsimile +61 2 9259 5999  
www.jpw.com.au

Client  
Tallawaddah Pty Ltd  
Suite 301, 35 Lime St, Sydney NSW 2000  
  
Project Manager & Quantity Surveyor  
Atlas Page Kirkland  
The Pylon Building, 1 Market Street, Sydney NSW 2000  
Telephone +61 2 9263 7311  
www.atlasgroup.com

Structural Engineer  
Northrop Consulting Engineers Pty Ltd  
Level 11, 345 George Street, Sydney, NSW 2000  
Telephone +61 2 9241 4188 Facsimile +61 2 9241 4324  
http://www.northrop.com.au  
  
Structural & Civil Engineer  
Taylor Thomson Whiting Consulting Engineers  
Level 5, 48 Queen Street St Leonards NSW 2065  
Telephone +61 2 9459 7288 Facsimile +61 2 9459 3146  
www.ttw.com.au

Materials Key  
Refer to Appendix 2- Materials Board for finishes

PAVE1	GB1	CONC2	MP1	SL
PAVE2	GB2	TIM1	MP2	MS
PAVE3	GL1	TIM2	SS1	GLT
PAVE4	GL2	TLE1	PT1	PC
PAVE5	GL3	TLE2	PTS	
ASPHLT	GL4	TLE3	BL1	
ST1	CONC1	SP1	TR2	

Key

Existing Works
New Works
Refits to existing opening
Indicative Fit out design (not part of the scope of works)

Project Title  
**CAMPBELL'S STORES**  
SYDNEY HARBOUR

Survey Note:  
Drawings are based on As built drawings and Survey Information provided by SPSA, to form the basis for the floor levels of level 01 and 02 as well as the roof ridge level.  
Surveys are undertaken to MGA North point, and AHD Datum.  
Where site levels have been provided refer to Fort Denison levels.  
RL 0.00 AHD is assumed to correlate to Fort Denison -0.025m.  
  
Survey used:  
"11848-REV C"  
"11848-B-Markups"  
"10041\_2004"  
For adjacent buildings used:  
"10041-Rev01"

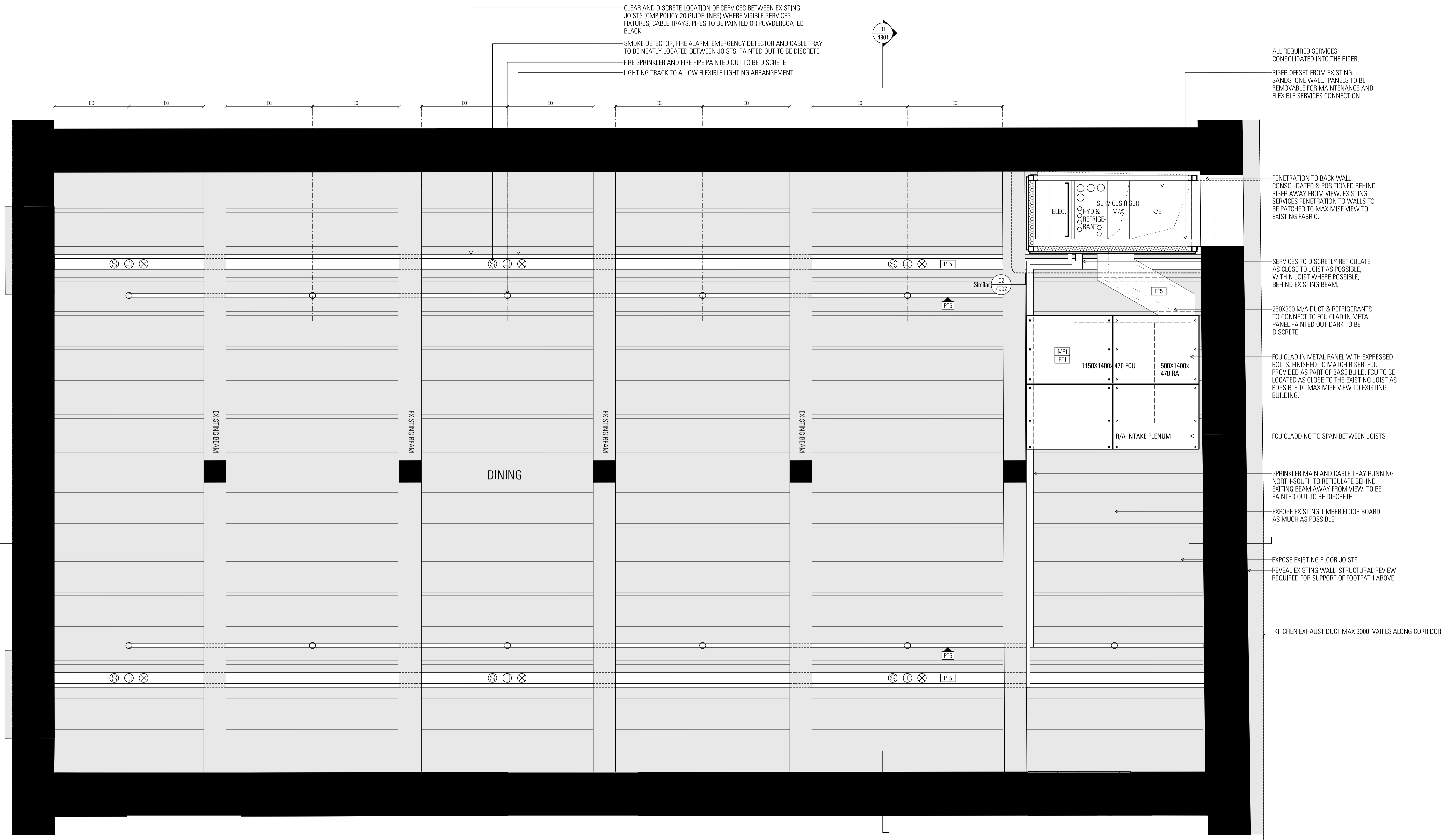
Rev Date  
A 10/05/16  
App Ckd Revision or reason for Issue  
BM Response to Submissions

Scale / North Point:  
1:25 @ B1, 0 0.25 0.5 0.75 1m  
Do not scale from drawing. Use marked dimensions.  
To be used in conjunction with all other Consultant's drawings.  
The Architect to be immediately notified of any discrepancies.  
Copyright on this drawing retained by the Architect.

Key Plan

Drawing Title  
**BASE BUILDING SERVICES FITOUT  
TYPICAL BAY DETAIL 02**

JPW Project Number  
12006  
Drawing Status  
EA  
  
Drawing Number  
EA-A-4902  
Revision  
A



CLEAR AND DISCRETE LOCATION OF SERVICES BETWEEN EXISTING JOISTS (CMP POLICY 20 GUIDELINES) WHERE VISIBLE SERVICES FIXTURES, CABLE TRAYS, PIPES TO BE PAINTED OR POWDERCOATED BLACK.

SMOKE DETECTOR, FIRE ALARM, EMERGENCY DETECTOR AND CABLE TRAY TO BE NEATLY LOCATED BETWEEN JOISTS. PAINTED OUT TO BE DISCRETE.

FIRE SPRINKLER AND FIRE PIPE PAINTED OUT TO BE DISCRETE

LIGHTING TRACK TO ALLOW FLEXIBLE LIGHTING ARRANGEMENT

ALL REQUIRED SERVICES CONSOLIDATED INTO THE RISER.

RISER OFFSET FROM EXISTING SANDSTONE WALL. PANELS TO BE REMOVABLE FOR MAINTENANCE AND FLEXIBLE SERVICES CONNECTION

PENETRATION TO BACK WALL CONSOLIDATED & POSITIONED BEHIND RISER AWAY FROM VIEW. EXISTING SERVICES PENETRATION TO WALLS TO BE PATCHED TO MAXIMISE VIEW TO EXISTING FABRIC.

SERVICES TO DISCREETLY RETICULATE AS CLOSE TO JOIST AS POSSIBLE, WITHIN JOIST WHERE POSSIBLE, BEHIND EXISTING BEAM.

750X300 M/A DUCT & REFRIGERANTS TO CONNECT TO FCU CLAD IN METAL PANEL PAINTED OUT DARK TO BE DISCRETE

FCU CLAD IN METAL PANEL WITH EXPRESSED BOLTS. FINISHED TO MATCH RISER. FCU PROVIDED AS PART OF BASE BUILD. FCU TO BE LOCATED AS CLOSE TO THE EXISTING JOIST AS POSSIBLE TO MAXIMISE VIEW TO EXISTING BUILDING.

FCU CLADDING TO SPAN BETWEEN JOISTS

SPRINKLER MAIN AND CABLE TRAY RUNNING NORTH-SOUTH TO RETICULATE BEHIND EXISTING BEAM AWAY FROM VIEW. TO BE PAINTED OUT TO BE DISCRETE.

EXPOSE EXISTING TIMBER FLOOR BOARD AS MUCH AS POSSIBLE

EXPOSE EXISTING FLOOR JOISTS

REVEAL EXISTING WALL: STRUCTURAL REVIEW REQUIRED FOR SUPPORT OF FOOTPATH ABOVE

KITCHEN EXHAUST DUCT MAX 3000. VARIES ALONG CORRIDOR.

04  
4902

01  
4901

Similar  
02  
4902

Architect  
**JPW JOHNSON PILTON WALKER**  
Johnson Pilton Walker Pty Ltd ACN 095 778 886  
Level 10, Plaza Building, Australia Square  
85 Pitt Street  
Sydney NSW 2000, Australia  
Telephone +61 2 9259 5900  
Facsimile +61 2 9259 5999  
www.jpw.com.au

Client  
Tallawoodah Pty Ltd  
Suite 301, 35 Lime St, Sydney NSW 2000  
Project Manager & Quantity Surveyor  
Atlas Page Kirkland  
The Pylon Building, 1 Market Street, Sydney NSW 2000  
Telephone +61 2 9283 7311  
www.atlasgroup.com

Structural Engineer  
Northrop Consulting Engineers Pty Ltd  
Level 11, 345 George Street, Sydney, NSW 2000  
Telephone +61 2 9241 4189 Facsimile +61 2 9241 4324  
http://www.northrop.com.au  
Structural & Civil Engineer  
Taylor Thomson Whitting Consulting Engineers  
Level 5, 48 Dundas Street St Lucias NSW 2065  
Telephone +61 2 9439 7288 Facsimile +61 2 9439 3146  
www.ttw.com.au

Materials Key  
Refer to Appendix 2- Materials Board for finishes

PAVE1	GB1	CONC2	MP1	SL
PAVE2	GB2	TIM1	MP2	MS
PAVE3	GL1	TIM2	SS1	GLT
PAVE4	GL2	TLE1	PT1	PC
PAVE5	GL3	TLE2	PTS	
ASPHLT	GL4	TLE3	BL1	
ST1	CONC1	SP1	TR2	

Key

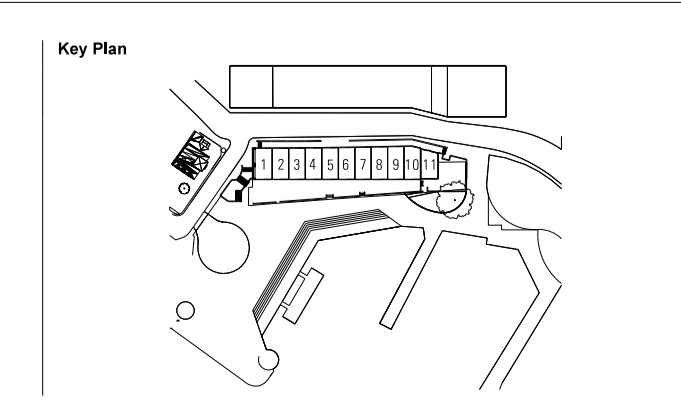
- Existing Works
- New Works
- fills to existing opening
- Indicative fit out design (not part of the scope of works)

Project Title  
**CAMPBELL'S STORES**  
SYDNEY HARBOUR

Survey Notes:  
Drawings are based on As built drawings and Survey Information provided by SPSA, to take into account for the floor levels of level 01 and 02 as well as the roof ridge level.  
Surveys are undertaken to MGA North point, and AHD Datum.  
Where site levels have been provided regarding to 'Fort Benson' levels, RL 0.00 AHD is assumed to correlate to Fort Benson -0.025m.  
Survey used:  
111845REV C  
111845 B-Markups  
12041\_2004  
For adjacent buildings used:  
12041\_Rev01

Rev Date  
A 10/05/16  
App Ckd Revision or reason for Issue  
BM Response to Submissions

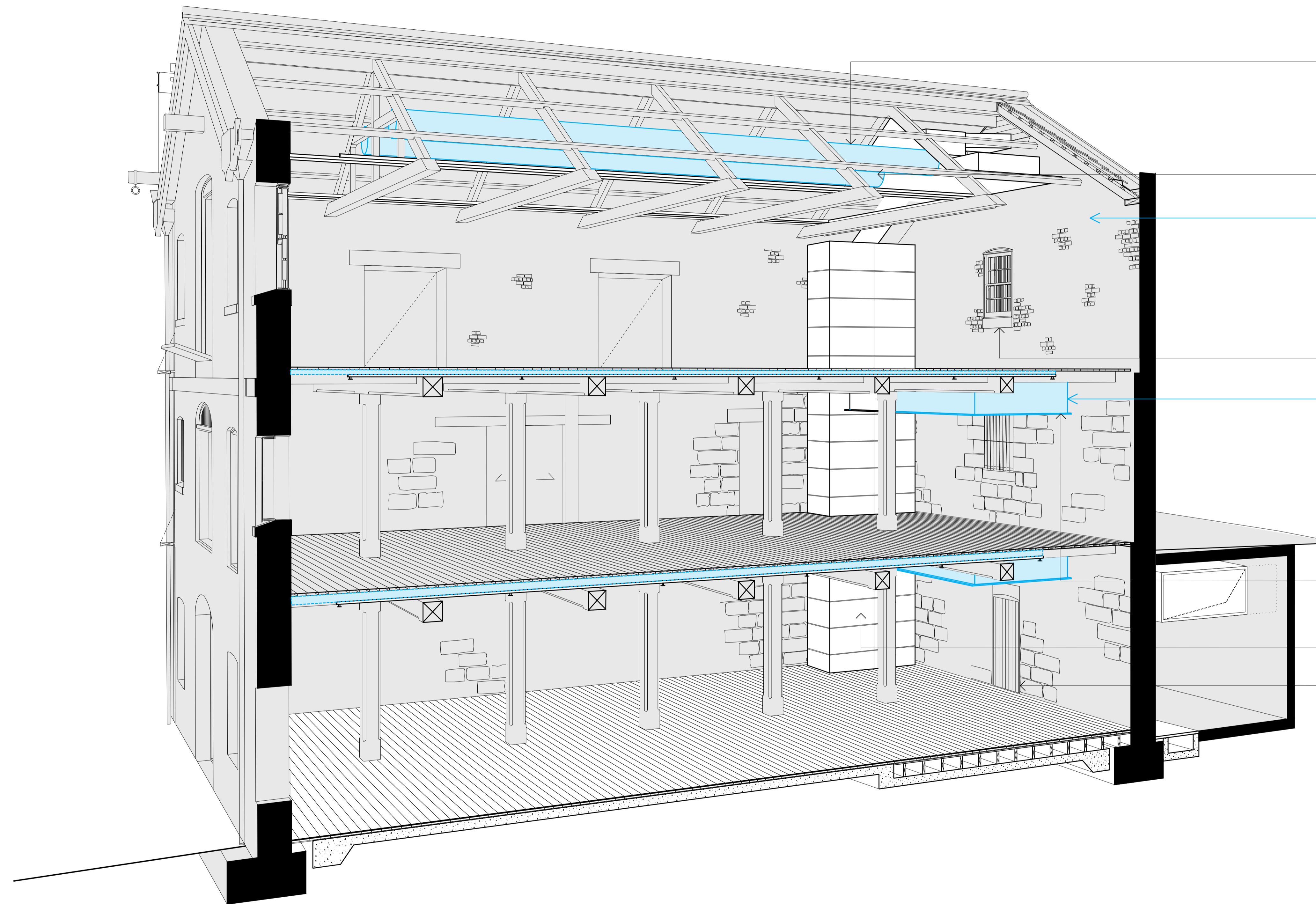
Scale / North Point:  
1:25 @ B1: 0 0.25 0.5 0.75 1m  
Do not scale from drawing. Use marked dimensions.  
To be used in conjunction with all other Consultant's drawings.  
The Architect to be immediately notified of any discrepancies.  
Copyright on this drawing retained by the Architect.



Drawing Title  
**BASE BUILDING SERVICES FITOUT**  
**TYPICAL GROUND LEVEL RCP**  
JPW Project Number  
12006  
Drawing Status  
EA  
Drawing Number  
EA-A-4903  
Revision  
A

NOTE:

INDICATIVE TENANCY FITOUT SHOWN IN BLUE  
SUBJECT TO A SEPARATE DA APPLICATION.  
NOT INCLUDED AS PART OF THIS APPLICATION.



CYLINDRICAL MAKE UP AIR DUCTS CONNECTING TO BASE BUILD FCU. TO BE CLAD IN METAL AND PAINTED OUT TO BE DISCRETE.

MINIMISE DUCT RUNS WHERE POSSIBLE TO INCREASE VIEW TO EXISTING FABRIC

**CMP POLICY 18 GUIDELINE**  
**MAXIMUM EXPOSURE OF ORIGINAL STRUCTURE AND SPACE**

'Future fit-outs should aim to reveal as much as possible of the original and early character of the stores, rather than imposing a new character.'

FUTURE FIT OUTS TO UTILISE NATURAL VENTILATION AS MUCH AS POSSIBLE

**CMP POLICY 20 GUIDELINE**  
**CLEAR & DISCRETE LOCATION OF SERVICES**

'The design and location of fittings such as lights, ceiling fans, heaters, etc, should have regard to the significance of adjacent elements. Where possible, these fittings should be designed as free-standing rather than fixed elements.'

SUPPLY AIR DUCT ENCLOSED IN EXPRESSED METAL PANELCLADDING TO MATCH BASE BUILD FCU CLADDING. PANELS TO RELATE TO EXISTING JOISTS, EQUALLY SPACED TO BOTH SIDES OF EXISTING COLUMN.

A/C DUCTS TO BE LOCATED BETWEEN JOISTS AND CLAD IN METAL PANEL PAINTED OUT TO BE DISCRETE.

FUTURE FITOUTS TO RETAIN ACCESS TO EXISTING DOORS

Architect  
**JPW  
JOHNSON PILTON WALKER**

Johnson Pilton Walker Pty Ltd ACN 095 778 886  
Level 10, Plaza Building, Australia Square  
95 Pitt Street  
Sydney NSW 2000, Australia  
Telephone +61 2 9259 5900  
Facsimile +61 2 9259 5999  
www.jpw.com.au

Client  
Tallwood/dah Pty Ltd  
Suite 301, 35 Lime St, Sydney NSW 2000

Project Manager & Quantity Surveyor  
Albus Page Kirkland  
The Pickett Building, 1 Market Street, Sydney NSW 2000  
Telephone +61 2 9283 7311  
www.albusgroup.com

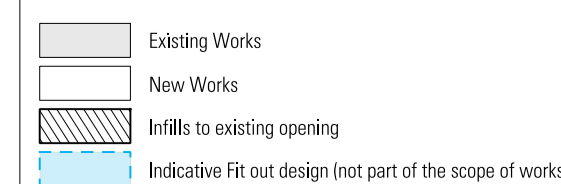
Structural Engineer  
Northrop Consulting Engineers Pty Ltd  
Level 11, 345 George Street, Sydney, NSW 2000  
Telephone +61 2 9241 4189 Facsimile +61 2 9241 4324  
http://www.northrop.com.au

Structural & Civil Engineer  
Taylor Thomson Whitting Consulting Engineers  
Level 5, 48 Dundas Street St Lucias NSW 2065  
Telephone +61 2 9439 7288 Facsimile +61 2 9439 3146  
www.ttw.com.au

Materials for  
Refer to Appendix 2- Materials Board for finishes

PAVE1	GB1	CONC2	MP1	SL
PAVE2	GB2	TIM1	MP2	MS
PAVE3	GL1	TIM2	SS1	GLT
PAVE4	GL2	TLE1	PT1	PC
PAVE5	GL3	TLE2	PIS	
ASPHLT	GL4	TLE3	BL1	
ST1	CONC1	SP1	TR2	

Key



Project Title



Survey Notes:

Drawings are based on As built drawings and Survey information provided by SPSA, to form the basis for the floor levels of level 01 and 02 as well as the roof ridge level.  
Surveys are undertaken to MSA North point, and AHD Datum.  
Where site levels have been provided engineers to Fort Denison levels.  
At 0.00 AHD is assumed to correlate to Fort Denison -0.025m.  
Survey used:  
'11848-REV C'  
'11848-B-Markups'  
'12041-2004'  
For adjacent buildings used:  
'12041-Rev01'

Rev Date

A 10/05/16

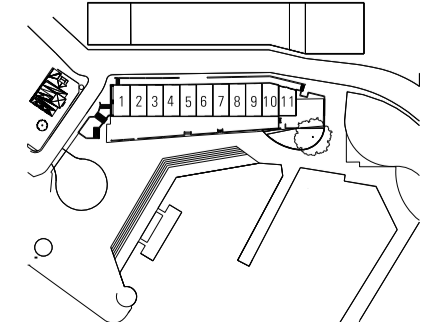
App Cld Revision or reason for issue

BM Response to Submissions

Scale / North Point:

Do not scale from drawing. Use marked dimensions.  
To be read in conjunction with all other Consultant's drawings.  
The Architect to be immediately notified of any discrepancies.  
Copyright on this drawing retained by the Architect.

Key Plan



Drawing Title

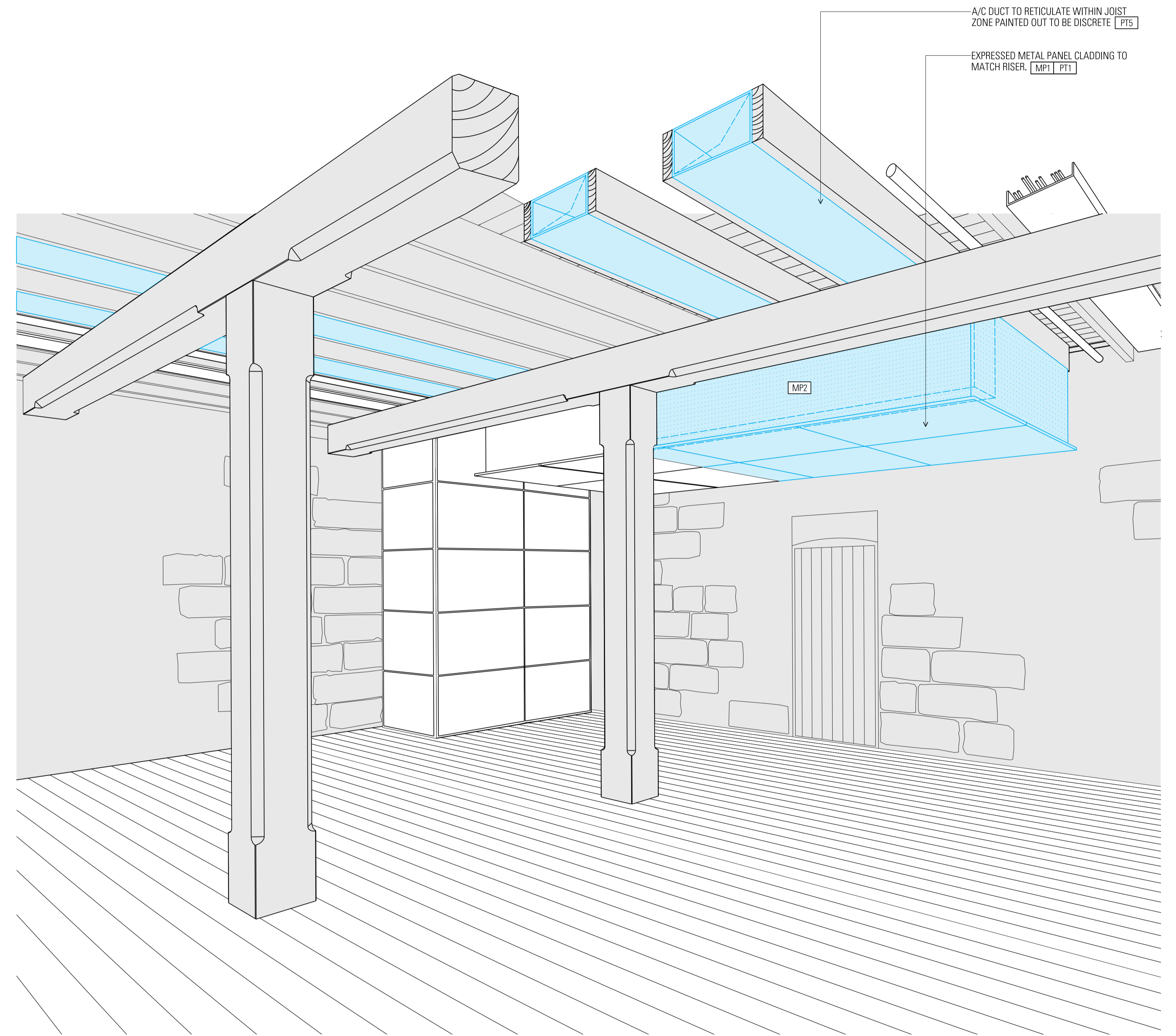
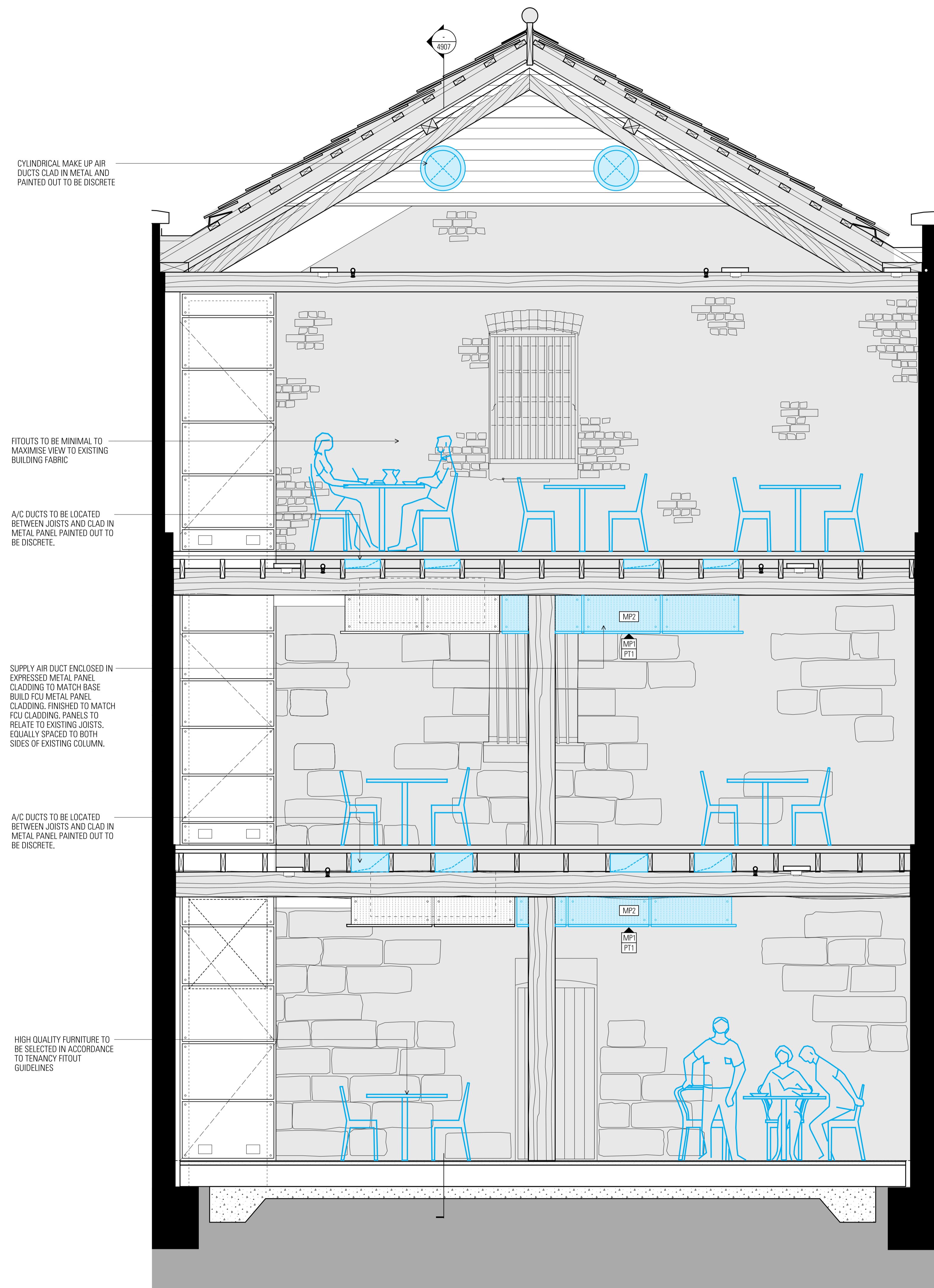
INDICATIVE TENANCY FITOUT PRINCIPALS  
TYPICAL BAY- RESTAURANT

JPW Project Number  
12006  
Drawing Status  
EA

Drawing Number  
EA-A-4905  
Revision  
A

NOTE:

INDICATIVE TENANCY FITOUT SHOWN IN BLUE  
SUBJECT TO A SEPARATE DA APPLICATION.  
NOT INCLUDED AS PART OF THIS APPLICATION.



01 NORTH SOUTH SECTION- RESTAURANT FITOUT

Architect  
**JPW JOHNSON PILTON WALKER**  
Johnson Pilton Walker Pty Ltd ACN 095 778 886  
Level 10, Plaza Building, Australia Square  
85 Pitt Street  
Sydney NSW 2000, Australia  
Telephone +61 2 9259 5900  
Facsimile +61 2 9259 5999  
www.jpw.com.au

Client  
Talkbandwidth Pty Ltd  
Suite 301, 35 Lime St, Sydney NSW 2000

Project Manager & Quantity Surveyor  
Altus Page Kirkland  
The Pylon Building, 1 Market Street, Sydney NSW 2000  
Telephone +61 2 9283 7311  
www.altusgroup.com

Structural Engineer  
Northrop Consulting Engineers Pty Ltd  
Level 11, 345 George Street, Sydney, NSW 2000  
Telephone +61 2 9241 4189 Facsimile +61 2 9241 4324  
http://www.northrop.com.au

Structural & Civil Engineer  
Taylor Thomson Whitting Consulting Engineers  
Level 5, 48 Queensland Street St Leonards NSW 2065  
Telephone +61 2 9439 7288 Facsimile +61 2 9439 3146  
www.ttw.com.au

Materials Key  
Refer to Appendix 2- Materials Board for finishes

PAVE1	GB1	CONC2	MP1	SL
PAVE2	GB2	TIM1	MP2	MS
PAVE3	GL1	TIM2	SS1	GLT
PAVE4	GL2	TLE1	PT1	PC
PAVE5	GL3	TLE2	PTS	
ASPHLT	GL4	TLE3	BL1	
ST1	CONC1	SP1	TR2	

Key

Existing Works
New Works
Billits to existing opening
Indicative Fit out design (not part of the scope of works)

Project Title  
**CAMPBELL'S STORES**  
SYDNEY HARBOUR

Survey Notes  
Drawings are based on As built drawings and Survey Information provided by SPSA, to form the basis for the floor levels of level 01 and 02 as well as the roof ridge level.  
Surveys are undertaken to MGA North point, sea AHD Datum.  
Where site levels have been provided refer to 'Top of Slab' levels.  
RL 0.00 AHD is assumed to correlate to Fort Denison -0.025m.

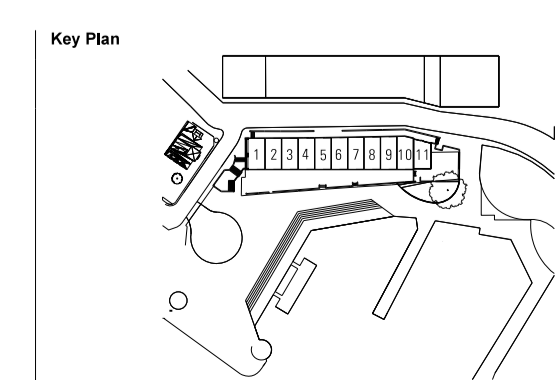
Survey used:  
"11948-REV C"  
"11948-B-Markups"  
"10341\_2004"  
For adjacent buildings used:  
"10341-Rev01"

Rev Date App Ckd Revision or reason for Issue

A	10/05/16	BM	Response to Submissions
---	----------	----	-------------------------

Scale / North Point:  
1:25 @ B1: 0 0.25 0.5 0.75 1m

Do not scale from drawing. Use marked dimensions.  
To be read in conjunction with all other Consultant's drawings.  
The Architect to be immediately notified of any discrepancies.  
Copyright on this drawing retained by the Architect.



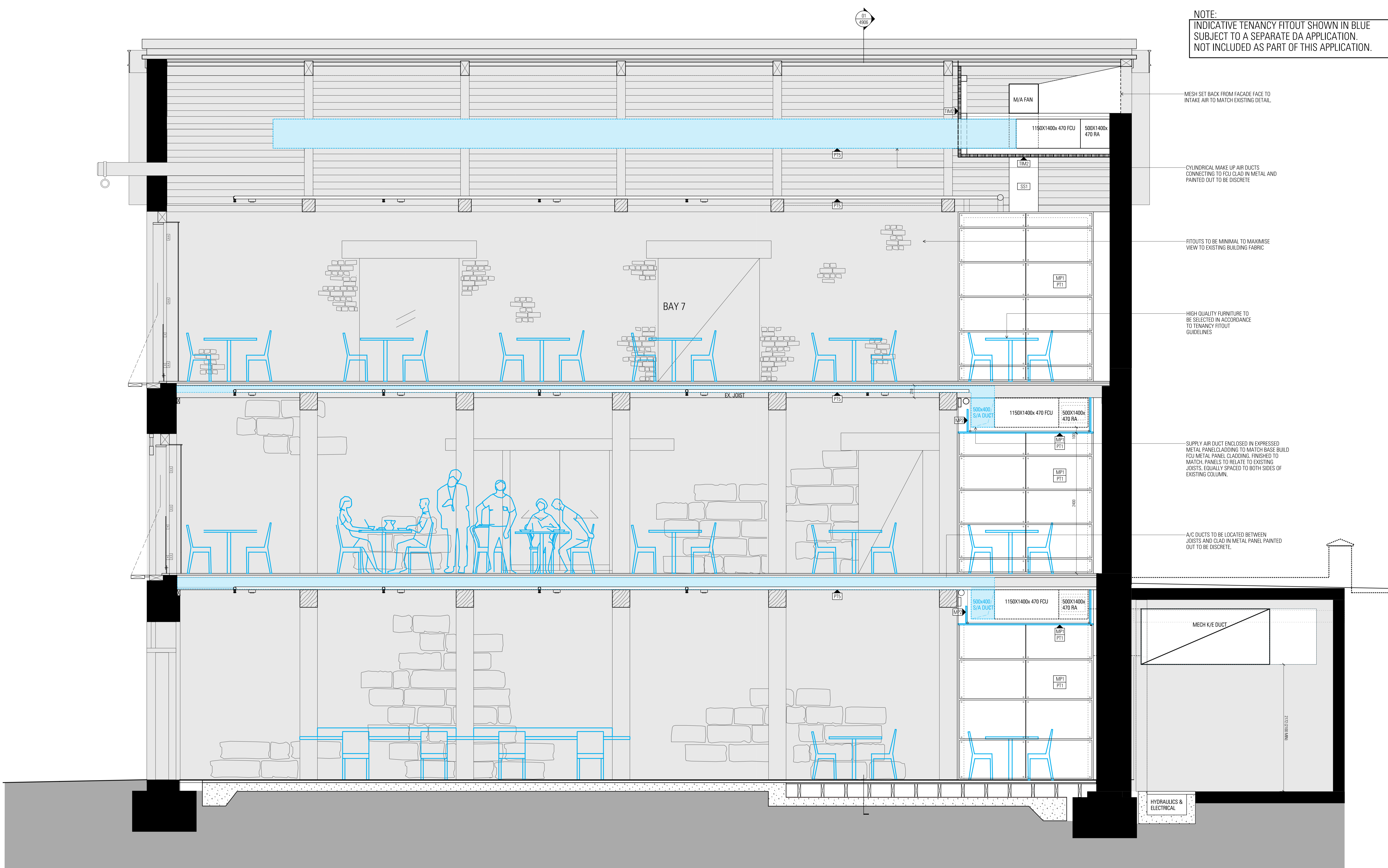
Drawing Title  
**INDICATIVE TENANCY FIT OUT - RESTAURANT**  
**TYPICAL BAY DETAIL 01**

JPW Project Number  
12006

Drawing Number  
EA-A-4906

Drawing Status  
EA

Revision  
A



**NOTE:**  
 INDICATIVE TENANCY FITOUT SHOWN IN BLUE  
 SUBJECT TO A SEPARATE DA APPLICATION.  
 NOT INCLUDED AS PART OF THIS APPLICATION.

MESH SET BACK FROM FACADE FACE TO INTAKE AIR TO MATCH EXISTING DETAIL.

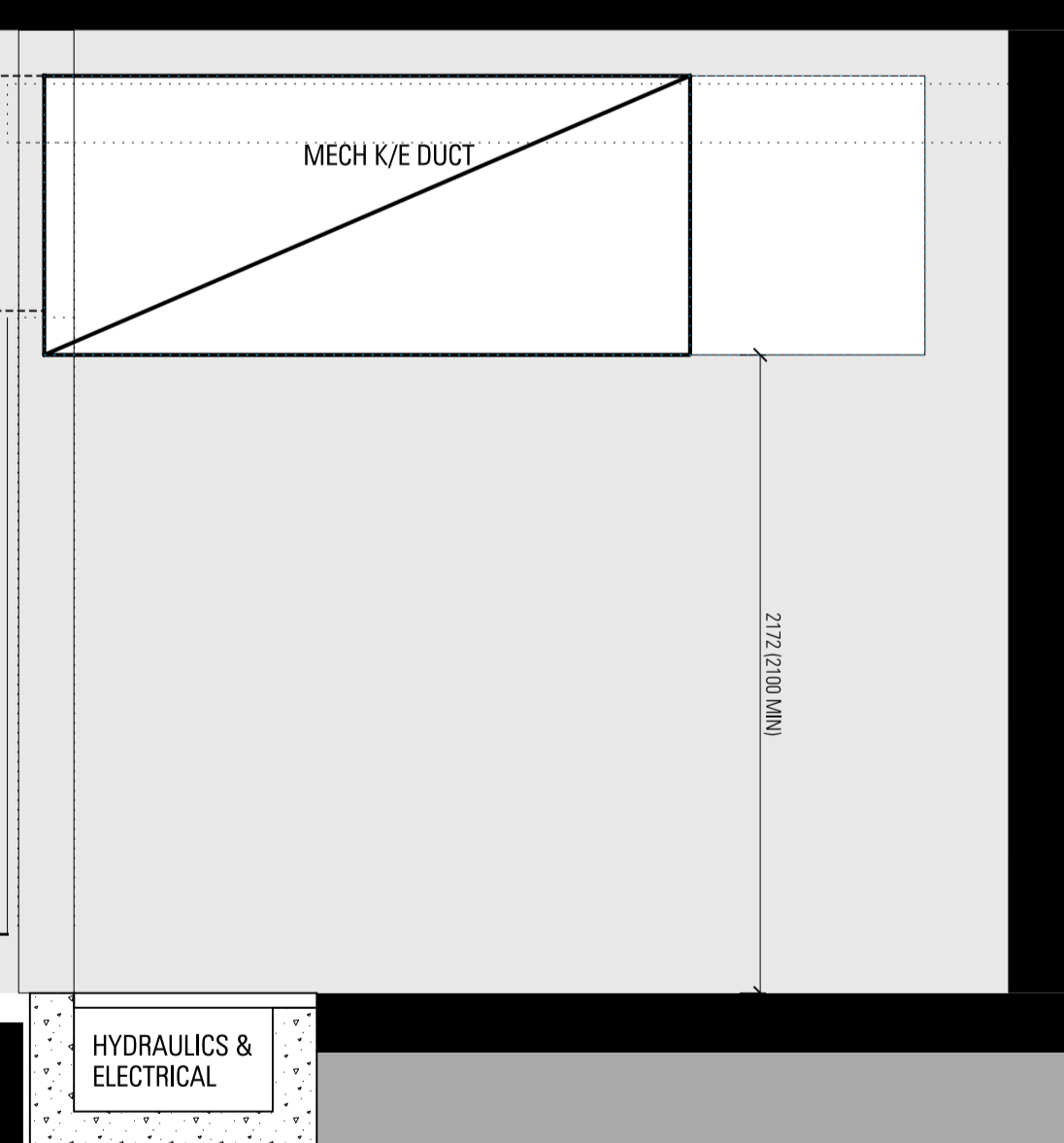
CYLINDRICAL MAKE UP AIR DUCTS CONNECTING TO FCU CLAD IN METAL AND PAINTED OUT TO BE DISCRETE.

FITOUTS TO BE MINIMAL TO MAXIMISE VIEW TO EXISTING BUILDING FABRIC

HIGH QUALITY FURNITURE TO BE SELECTED IN ACCORDANCE TO TENANCY FITOUT GUIDELINES

SUPPLY AIR DUCT ENCLOSED IN EXPRESSED METAL PANEL CLADDING TO MATCH BASE BUILD FCU METAL PANEL CLADDING, FINISHED TO MATCH PANELS TO RELATE TO EXISTING JOISTS, EQUALLY SPACED TO BOTH SIDES OF EXISTING COLUMN.

A/C DUCTS TO BE LOCATED BETWEEN JOISTS AND CLAD IN METAL PANEL PAINTED OUT TO BE DISCRETE.



**Architect**  
 JJPW  
 JOHNSON PILTON WALKER  
 Johnson Pilton Walker Pty Ltd ACN 095 778 886  
 Level 10, Plaza Building, Australia Square  
 95 Pitt Street  
 Sydney NSW 2000, Australia  
 Telephone +61 2 9259 5900  
 Facsimile +61 2 9259 5999  
 www.jpw.com.au

**Client**  
 Tallawanda Pty Ltd  
 Suite 301, 35 Lime St, Sydney NSW 2000  
 Project Manager & Quantity Surveyor  
 Altus Page Kirkland  
 The Pickett Building, 1 Market Street, Sydney NSW 2000  
 Telephone +61 2 9283 7311  
 www.altusgroup.com

**Structural Engineer**  
 Northrop Consulting Engineers Pty Ltd  
 Level 11, 345 George Street, Sydney, NSW 2000  
 Telephone +61 2 9241 4188 Facsimile +61 2 9241 4324  
 http://www.northrop.com.au  
 Structural & CM Engineer  
 Taylor Thomson Whitting Consulting Engineers  
 Level 5, 48 Dundas Street St Leonards NSW 2065  
 Telephone +61 2 9439 7288 Facsimile +61 2 9439 3146  
 www.ttw.com.au

Materials Key  
 Refer to Appendix 2- Materials Board for finishes

PAVE1	GB1	CONC2	MP1	SL
PAVE2	GB2	TIM1	MP2	MS
PAVE3	GL1	TIM2	SS1	GLT
PAVE4	GL2	TLE1	PT1	PC
PAVE5	GL3	TLE2	PTS	
ASPHLT	GL4	TLE3	BL1	
ST1	CONC1	SP1	TR2	

Key

Existing Works
New Works
fills to existing opening
Indicative fit out design (not part of the scope of works)

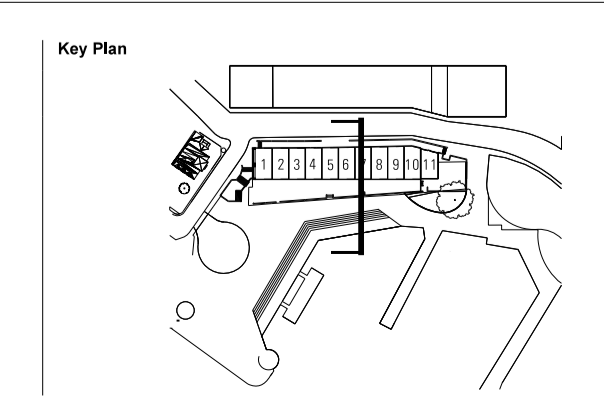
Project Title  
  
**CAMPBELL'S STORES**  
 SYDNEY HARBOUR

**Survey Notes:**  
 Drawings are based on As built drawings and Survey Information provided by SPSA, to form the basis for the floor levels of Level 01 and 02 as well as the roof ridge levels.  
 Surveys are orientated to MGA North point, see AHD Datum.  
 Where site levels have been provided refer to 'Fort Denison' levels.  
 All 0.50 AHD is assumed to correlate to Fort Denison -0.025m.  
 Surveyor name:  
 '11943-REV C'  
 '11943-@-Markups'  
 '10041-2004'  
 For adjacent buildings used:  
 '10041-@-Rev'

Rev Date App Ckd Revision or reason for Issue

A	10/05/16	BM	Response to Submissions
---	----------	----	-------------------------

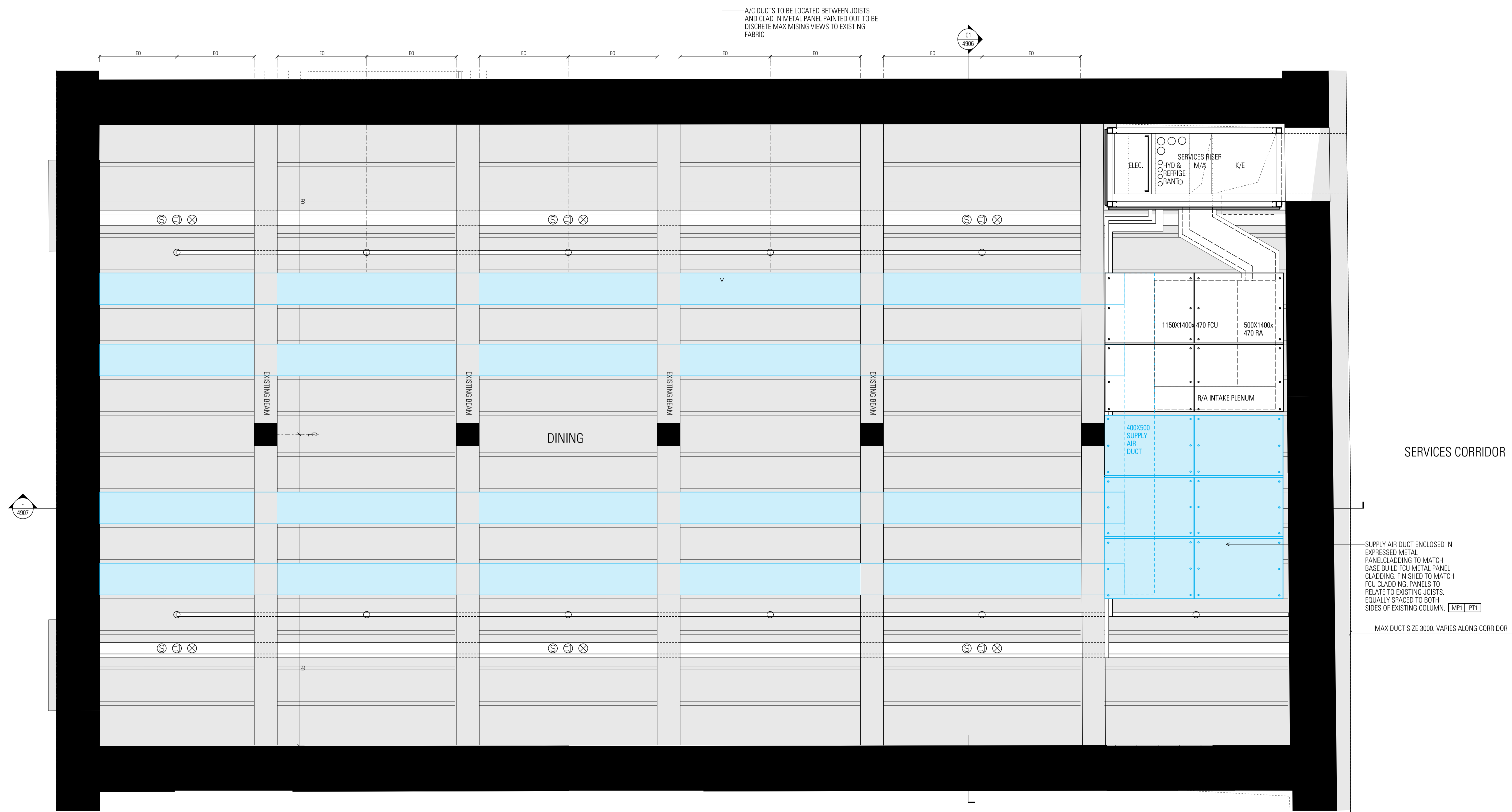
Scale / North Point:  
 1:25 @ B1, 0 0.25 0.5 0.75 1M  
 Do not scale from drawing. Use marked dimensions.  
 To be used in conjunction with all other Consultant's drawings.  
 The Architect to be immediately notified of any discrepancies.  
 Copyright on this drawing retained by the Architect.



Drawing Title  
**INDICATIVE TENANCY FITOUT - RESTAURANT**  
**TYPICAL BAY DETAIL 02**  
 JJPW Project Number  
 12006  
 Drawing Status  
 EA  
 Drawing Number  
 EA-A-4907  
 Revision  
 A

NOTE:

INDICATIVE TENANCY FITOUT SHOWN IN BLUE  
SUBJECT TO A SEPARATE DA APPLICATION.  
NOT INCLUDED AS PART OF THIS APPLICATION.

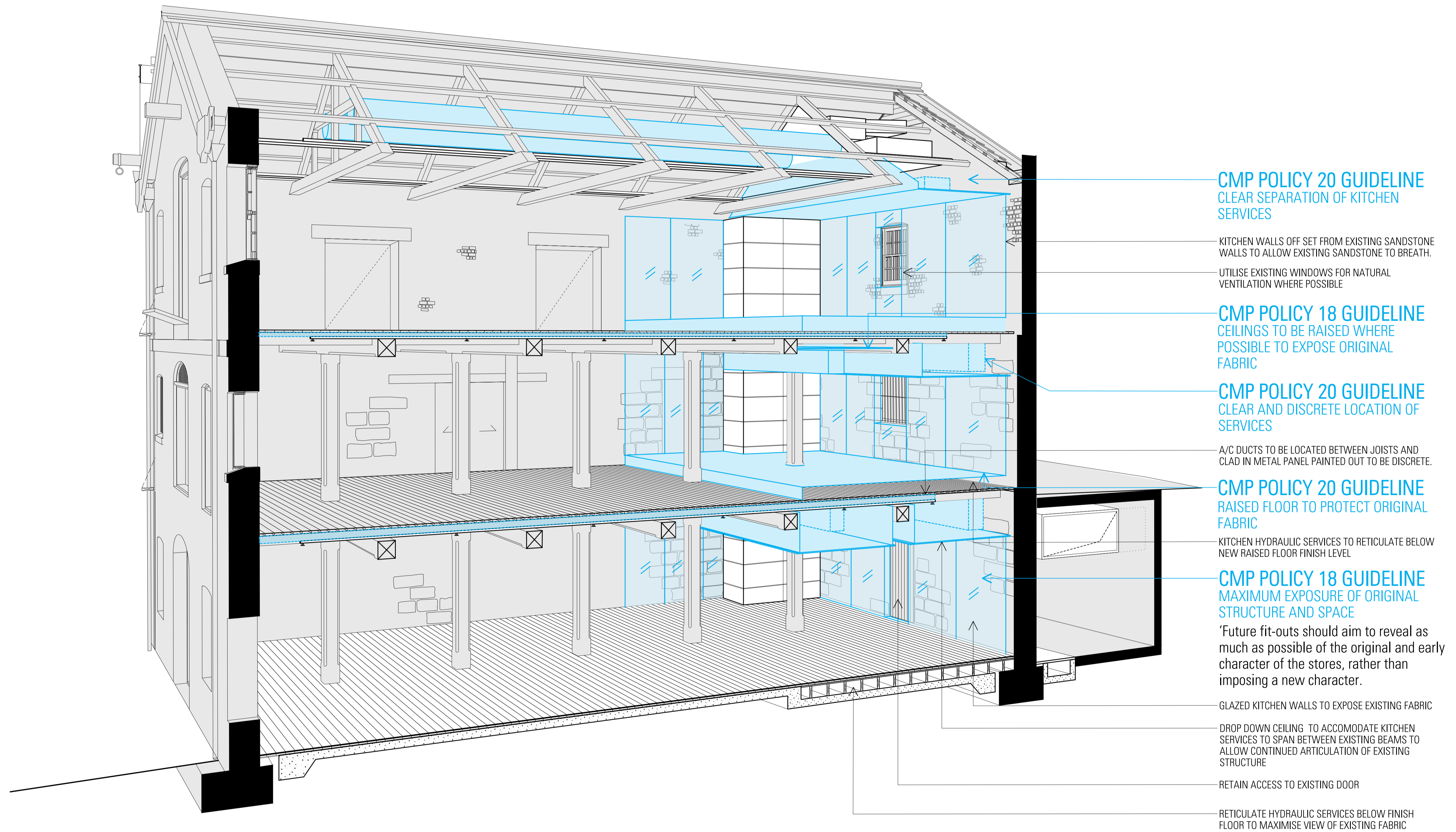


SUPPLY AIR DUCT ENCLOSED IN EXPRESSED METAL PANEL CLADDING TO MATCH BASE BUILD FCU METAL PANEL CLADDING. FINISHED TO MATCH FCU CLADDING. PANELS TO RELATE TO EXISTING JOISTS, EQUALLY SPACED TO BOTH SIDES OF EXISTING COLUMN. [MP1] [PT1]

MAX DUCT SIZE 3000. VARIES ALONG CORRIDOR

NOTE:

INDICATIVE TENANCY FITOUT SHOWN IN BLUE  
SUBJECT TO A SEPARATE DA APPLICATION.  
NOT INCLUDED AS PART OF THIS APPLICATION.



Architect  
**JPW JOHNSON PILTON WALKER**  
Johnson Pilton Walker Pty Ltd ACN 095 778 886  
Level 10, Plaza Building, Australia Square  
95 Pitt Street  
Sydney NSW 2000, Australia  
Telephone +61 2 9259 5900  
Facsimile +61 2 9259 5999  
www.jpw.com.au

Client  
Tallawoodah Pty Ltd  
Suite 301, 35 Lime St, Sydney NSW 2000  
Telephone +61 2 9241 4189 Facsimile +61 2 9241 4324  
Project Manager & Quantity Surveyor  
Albus Page Kirkland  
The Pickett Building, 1 Market Street, Sydney NSW 2000  
Telephone +61 2 9283 7311  
www.albusgroup.com

Structural Engineer  
Northrop Consulting Engineers Pty Ltd  
Level 11, 345 George Street, Sydney, NSW 2000  
Telephone +61 2 9241 4189 Facsimile +61 2 9241 4324  
http://www.northrop.com.au  
Structural & Civil Engineer  
Taylor Thomson Whiting Consulting Engineers  
Level 5, 48 Dundas Street St Leonards NSW 2060  
Telephone +61 2 9439 7288 Facsimile +61 2 9439 3146  
www.ttw.com.au

Materials for  
Refer to Appendix 2- Materials Board for finishes

PAVE1	GB1	CONC2	MP1	SL
PAVE2	GB2	TIM1	MP2	MS
PAVE3	GL1	TIM2	SS1	GLT
PAVE4	GL2	TLE1	PT1	PC
PAVE5	GL3	TLE2	PTS	
ASPHLT	GL4	TLE3	BL1	
ST1	CONC1	SP1	TR2	

Key

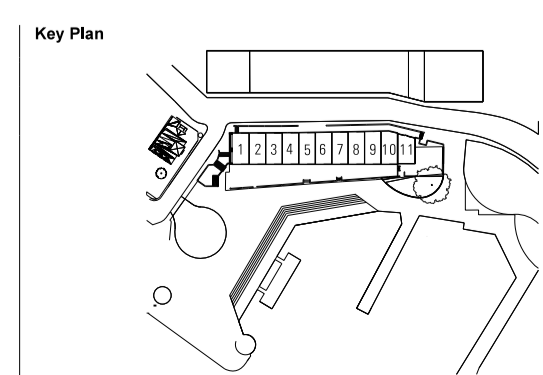
Existing Works
New Works
Refills to existing opening
Indicative fit out design (not part of the scope of works)

Project Title  
**CAMPBELL'S STORES**  
SYDNEY HARBOUR

Survey Note:  
Drawings are based on As built drawings and Survey information provided by SPSA, to form the basis for the floor levels of level 01 and 02 as well as the roof ridge level.  
Surveys are undertaken to MGA North point, and AHD Datum.  
Where site levels have been provided engineer to 'Top of Store' levels.  
At 0.00 AHD is assumed to correlate to Fort Denison -0.025m.  
Survey used:  
'11848-REV C'  
'11848-B-Markups'  
'12041-2004'  
For adjacent buildings used:  
'12041-Rev01'

Rev	Date	App Ckd	Revision or reason for issue
A	10/05/16	BM	Response to Submissions

Scale / North Point:  
Do not scale from drawing. Use marked dimensions.  
To be read in conjunction with all other Consultant's drawings.  
The Architect to be immediately notified of any discrepancies.  
Copyright on this drawing retained by the Architect.



Drawing Title  
**INDICATIVE TENANCY FITOUT PRINCIPALS**  
TYPICAL BAY-KITCHEN

JPW Project Number 12006	Drawing Number EA-A-4910
Drawing Status EA	Revision A

NOTE:

INDICATIVE TENANCY FITOUT SHOWN IN BLUE  
SUBJECT TO A SEPARATE DA APPLICATION.  
NOT INCLUDED AS PART OF THIS APPLICATION.

CYLINDRICAL MAKE UP AIR  
DUCTS CLAD IN METAL AND  
PAINTED OUT TO BE DISCRETE

SEALED CEILING OVER  
KITCHEN TO COMPLY WITH AS  
4674 FOOD PREMISE  
STANDARDS

INDICATIVE KITCHEN HOOD  
LOCATION

GLASS WALLS TO KITCHENS  
TO ALLOW VIEW TO EXISTING  
SANDSTONE WALLS

OPENINGS TO KITCHEN WALL  
TO ALLOW NATURAL  
VENTILATION THROUGH  
EXISTING WINDOWS

CEILINGS AND WALL FINISHES  
TO BE SET BACK FROM EXISTING  
SANDSTONE WALL

RAISED FLOOR TO PROTECT  
ORIGINAL FABRIC (CMP POLICY 20)

DROP DOWN CEILING TO  
ACCOMMODATE KITCHEN SERVICES  
TO SPAN BETWEEN EXISTING  
BEAMS TO ALLOW CONTINUED  
ARTICULATION OF EXISTING  
STRUCTURE

ANY DUCTS RUNNING BELOW  
BEAMS TO BE NEATLY CLAD OUT  
IN METAL PANEL AND PAINTED  
DARK TO BE DISCRETE. DUCT  
SHOULD NOT BE DEEPER THEN  
THE DROP DOWN CEILING

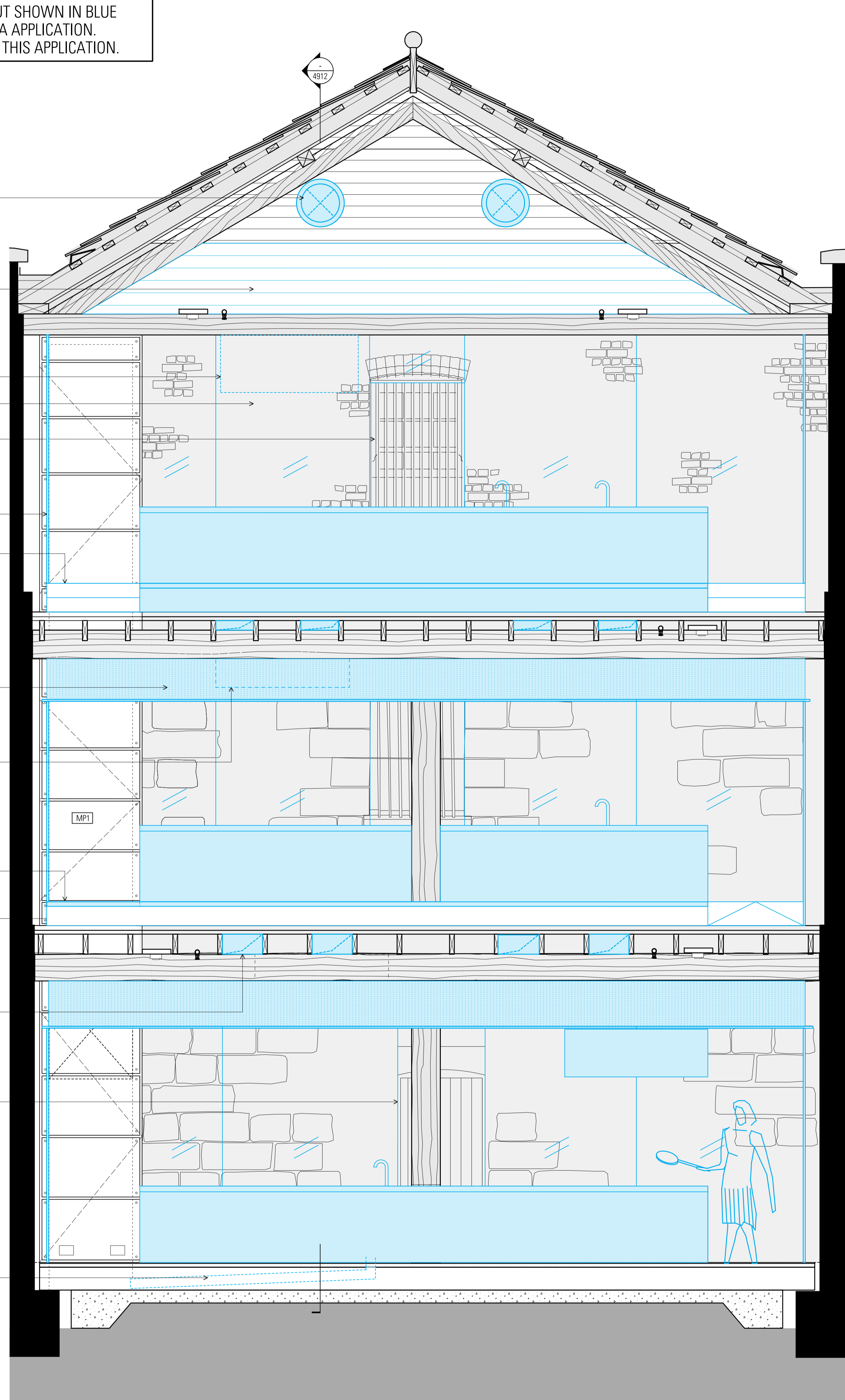
RAISED FLOOR TO PROTECT  
ORIGINAL FABRIC (CMP POLICY 20)

HYDRAULICS SERVICES TO  
RETICULATE WITHIN THE  
RAISED FLOOR ZONE

A/C DUCTS TO BE LOCATED  
BETWEEN JOISTS AND CLAD IN  
METAL PANEL PAINTED OUT TO  
BE DISCRETE.

OPENINGS TO KITCHEN WALL  
TO ALLOW ACCESS TO  
EXISTING DOORS

HYDRAULICS SERVICES TO  
RETICULATE WITHIN THE  
NEW FINISH FLOOR ZONE

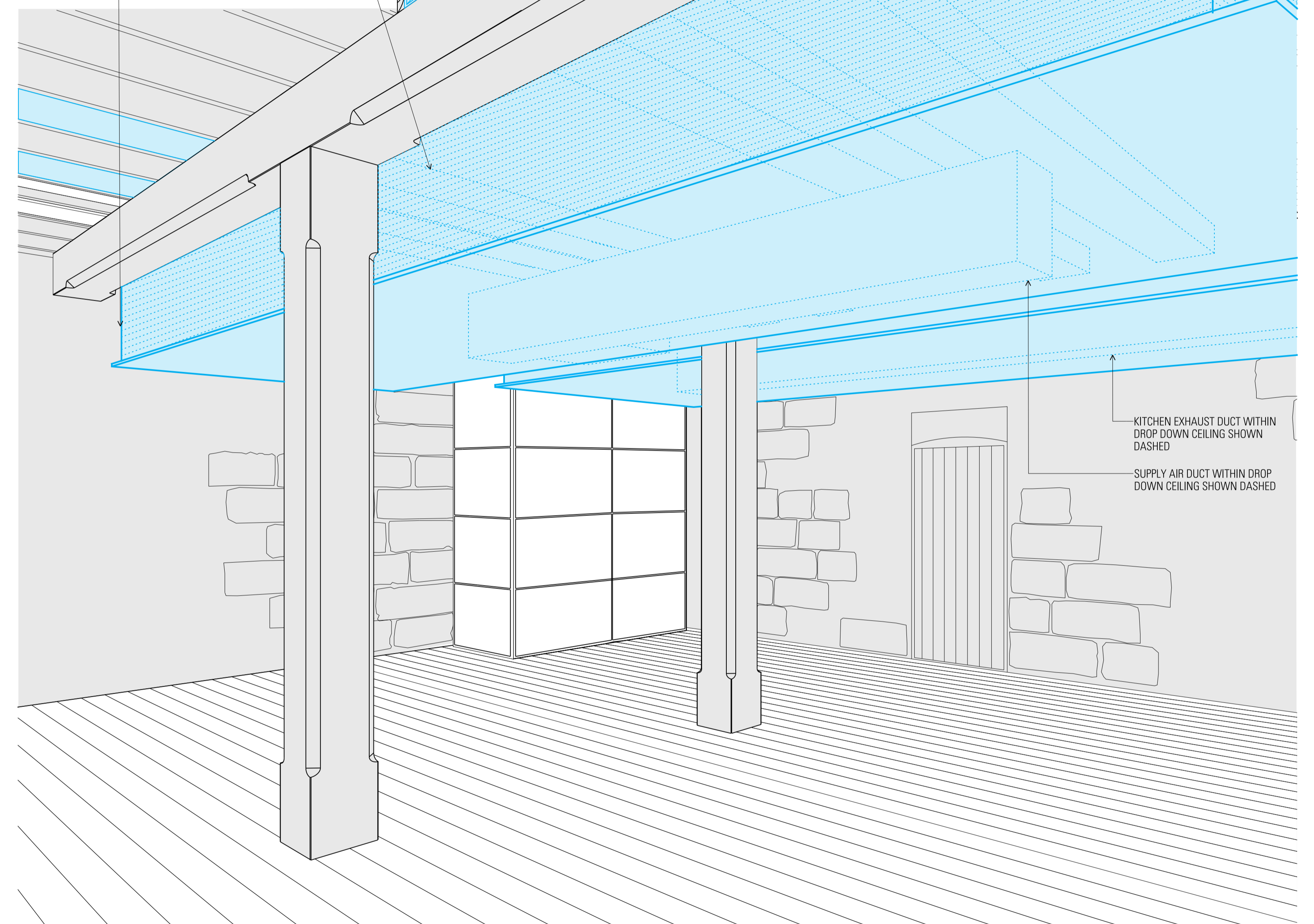


01 NORTH SOUTH SECTION - KITCHEN FITOUT

A/C DUCT TO RETICULATE WITHIN JOIST  
ZONE PAINTED OUT TO BE DISCRETE [P15]

DROP DOWN CEILING TO  
ACCOMMODATE KITCHEN SERVICES  
TO SPAN BETWEEN EXISTING  
BEAMS TO ALLOW CONTINUED  
ARTICULATION OF EXISTING  
STRUCTURE

CEILINGS AND  
WALL FINISHES TO  
BE SET BACK FROM  
EXISTING  
SANDSTONE WALL

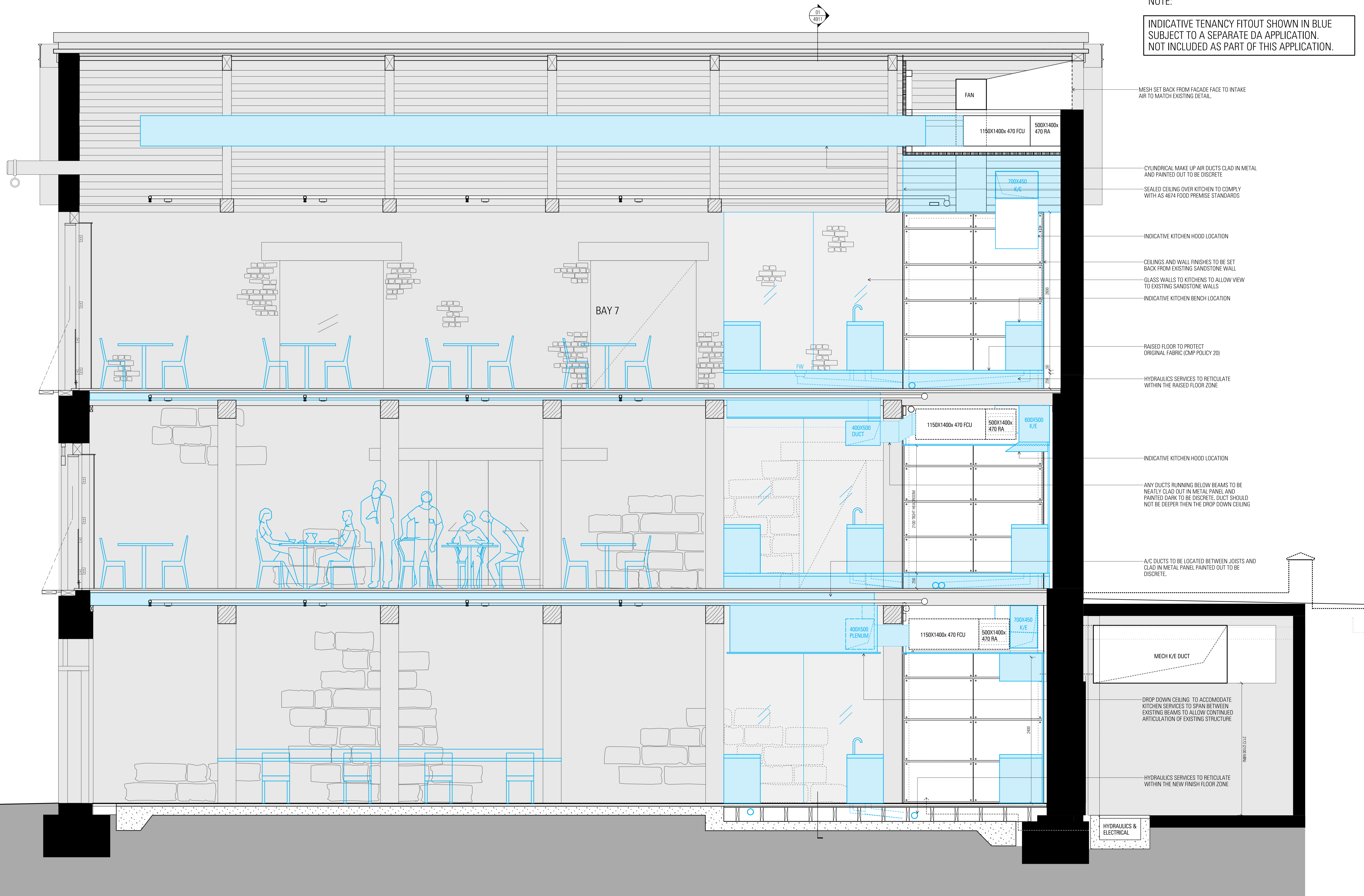


KITCHEN EXHAUST DUCT WITHIN  
DROP DOWN CEILING SHOWN DASHED

SUPPLY AIR DUCT WITHIN DROP  
DOWN CEILING SHOWN DASHED

NOTE:

INDICATIVE TENANCY FITOUT SHOWN IN BLUE  
SUBJECT TO A SEPARATE DA APPLICATION.  
NOT INCLUDED AS PART OF THIS APPLICATION.



MESH SET BACK FROM FACADE FACE TO INTAKE AIR TO MATCH EXISTING DETAIL.

CYLINDRICAL MAKE UP AIR DUCTS CLAD IN METAL AND PAINTED OUT TO BE DISCRETE  
SEALED CEILING OVER KITCHEN TO COMPLY WITH AS 4674 FOOD PREMISE STANDARDS

INDICATIVE KITCHEN HOOD LOCATION  
CEILINGS AND WALL FINISHES TO BE SET BACK FROM EXISTING SANDSTONE WALL  
GLASS WALLS TO KITCHENS TO ALLOW VIEW TO EXISTING SANDSTONE WALLS  
INDICATIVE KITCHEN BENCH LOCATION

RAISED FLOOR TO PROTECT ORIGINAL FABRIC (CMP POLICY 20)  
HYDRAULICS SERVICES TO RETICULATE WITHIN THE RAISED FLOOR ZONE

INDICATIVE KITCHEN HOOD LOCATION  
ANY DUCTS RUNNING BELOW BEAMS TO BE NEATLY CLAD OUT IN METAL PANEL AND PAINTED DARK TO BE DISCRETE. DUCT SHOULD NOT BE DEEPER THEN THE DROP DOWN CEILING

A/C DUCTS TO BE LOCATED BETWEEN JOISTS AND CLAD IN METAL PANEL PAINTED OUT TO BE DISCRETE.

MECH K/E DUCT  
DROP DOWN CEILING TO ACCOMMODATE KITCHEN SERVICES TO SPAN BETWEEN EXISTING BEAMS TO ALLOW CONTINUED ARTICULATION OF EXISTING STRUCTURE  
HYDRAULICS SERVICES TO RETICULATE WITHIN THE NEW FINISH FLOOR ZONE

HYDRAULICS & ELECTRICAL

Architect  
**JPW JOHNSON PILTON WALKER**  
Johnson Pilton Walker Pty Ltd ACN 095 778 886  
Level 10, Plaza Building, Australia Square  
95 Pitt Street  
Sydney NSW 2000, Australia  
Telephone +61 2 9259 5900  
Facsimile +61 2 9259 5999  
www.jpw.com.au

Client  
Tallawindah Pty Ltd  
Suite 301, 35 Lime St, Sydney NSW 2000  
Project Manager & Quantity Surveyor  
Albus Page Kirkland  
The Pickett Building, 1 Market Street, Sydney NSW 2000  
Telephone +61 2 9283 7311  
www.albusgroup.com

Structural Engineer  
Northrop Consulting Engineers Pty Ltd  
Level 11, 345 George Street, Sydney, NSW 2000  
Telephone +61 2 9241 4188 Facsimile +61 2 9241 4324  
http://www.northrop.com.au  
Structural & CM Engineer  
Taylor Thomson Whitting Consulting Engineers  
Level 5, 48 Dundas Street St Leonards NSW 2065  
Telephone +61 2 9439 7288 Facsimile +61 2 9439 3146  
www.ttw.com.au

Materials Key  
Refer to Appendix 2- Materials Board for finishes

PAVE1	GB1	CONC2	MP1	SL
PAVE2	GB2	TIM1	MP2	MS
PAVE3	GL1	TIM2	SS1	GLT
PAVE4	GL2	TLE1	PT1	PC
PAVE5	GL3	TLE2	PTS	
ASPHLT	GL4	TLE3	BL1	
ST1	CONC1	SP1	TR2	

Key

Existing Works
New Works
Billits to existing opening
Indicative Fit out design (not part of the scope of works)

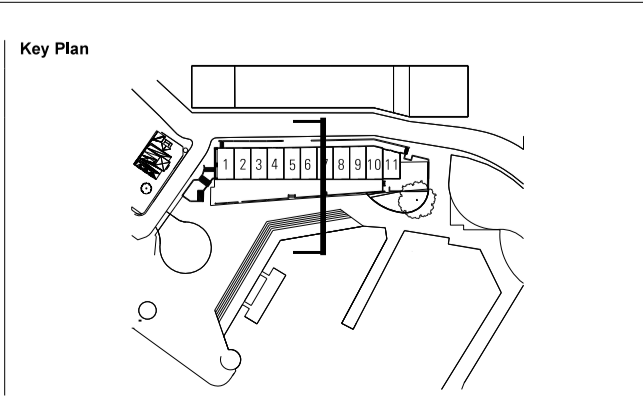
Project Title  
**CAMPBELL'S STORES**  
SYDNEY HARBOUR

Survey Notes:  
Drawings are based on As built drawings and Survey Information provided by SPSA, to form the basis for the floor levels of Level 01 and 02 as well as the roof ridge level.  
Surveys are orientated to MGA North point, see AHD Datum.  
Where site levels have been provided orientated to Fort Denison levels, RL 0.00 AHD is assumed to correlate to Fort Denison -0.025m.  
Survey used:  
"11848-REV C"  
"11848-B-Markups"  
"12041-2004"  
For adjacent buildings used:  
"12041-Rev01"

Rev Date App Cld Revision or reason for Issue

A	1202516	BM	Response to Submissions
---	---------	----	-------------------------

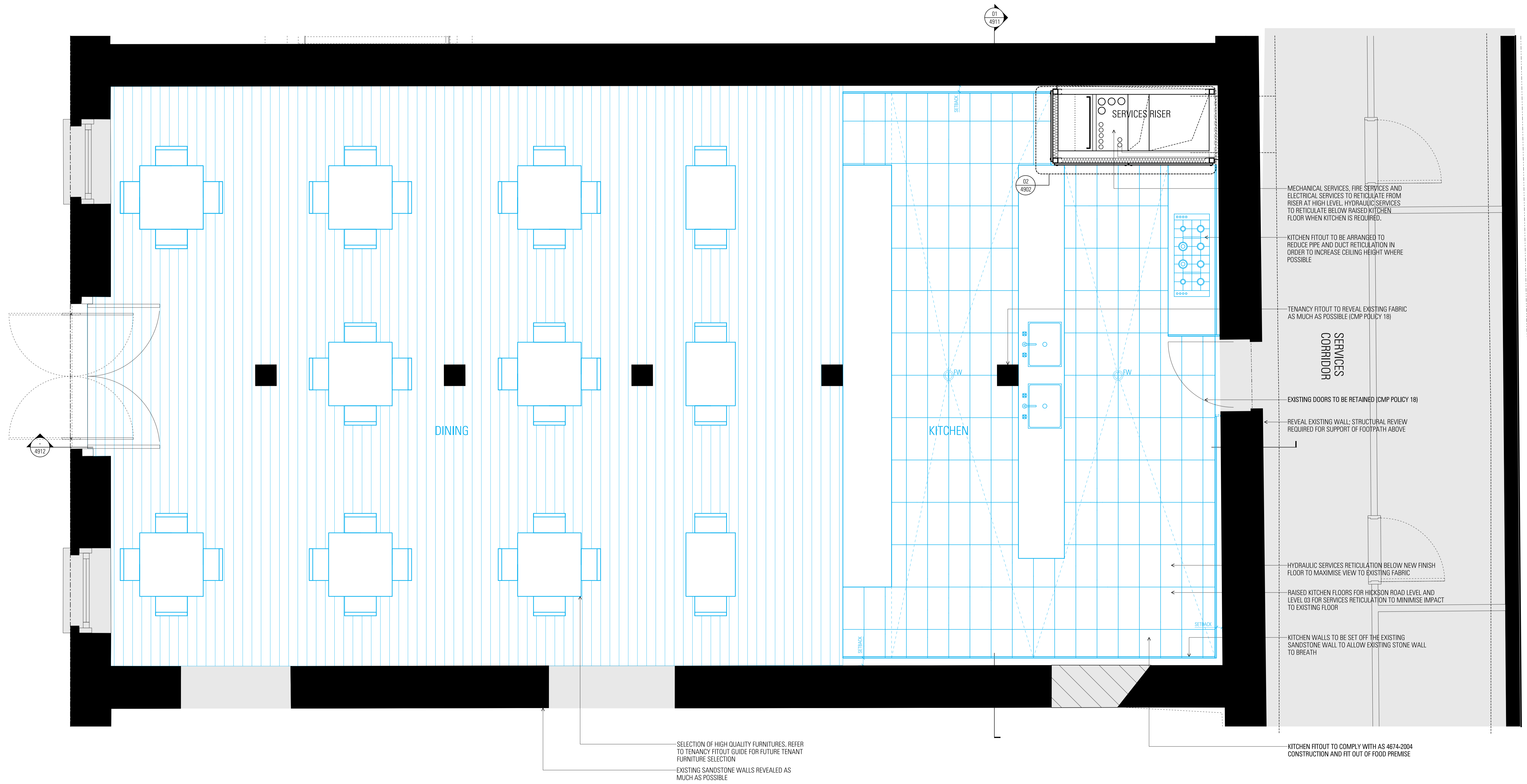
Scale / North Point:  
1:25 @ B1, 0 0.25 0.5 0.75 1M  
Do not scale from drawing. Use marked dimensions.  
To be used in conjunction with all other Consultant's drawings.  
The Architect to be immediately notified of any discrepancies.  
Copyright on this drawing retained by the Architect.



Drawing Title  
**INDICATIVE TENANCY FITOUT - KITCHEN TYPICAL BAY DETAIL 02**  
JPW Project Number  
12006  
Drawing Status  
EA  
Drawing Number  
EA-A-4912  
Revision  
A

NOTE:

INDICATIVE TENANCY FITOUT SHOWN IN BLUE  
SUBJECT TO A SEPARATE DA APPLICATION.  
NOT INCLUDED AS PART OF THIS APPLICATION.



Architect  
**JPW JOHNSON PILTON WALKER**  
Johnson Pilton Walker Pty Ltd ACN 095 778 886  
Level 10, Plaza Building, Australia Square  
95 Pitt Street  
Sydney NSW 2000, Australia  
Telephone +61 2 9259 5900  
Facsimile +61 2 9259 5999  
www.jpww.com.au

Client  
Tallawoodah Pty Ltd  
Suite 301, 35 Lime St, Sydney NSW 2000  
Project Manager & Quantity Surveyor  
Atlas Page Kirkland  
The Pylon Building, 1 Market Street, Sydney NSW 2000  
Telephone +61 2 9283 7311  
www.atlasgroup.com

Structural & Civil Engineer  
Northrop Consulting Engineers Pty Ltd  
Level 11, 345 George Street, Sydney, NSW 2000  
Telephone +61 2 9241 4188 Facsimile +61 2 9241 4324  
http://www.northrop.com.au  
Structural & Civil Engineer  
Taylor Thomson Whitting Consulting Engineers  
Level 5, 48 Oandora Street St Leonards NSW 2065  
Telephone +61 2 9439 7288 Facsimile +61 2 9439 3146  
www.ttw.com.au

Materials for  
Refer to Appendix 2- Materials Board for finishes

PAVE1	GB1	CONC2	MP1	SL
PAVE2	GB2	TIM1	MP2	MS
PAVE3	GL1	TIM2	SS1	GLT
PAVE4	GL2	TLE1	PT1	PC
PAVE5	GL3	TLE2	PTS	
ASPHLT	GL4	TLE3	BL1	
ST1	CONC1	SP1	TR2	

Key

	Existing Works
	New Works
	fills to existing opening
	Indicative Fit out design (not part of the scope of works)

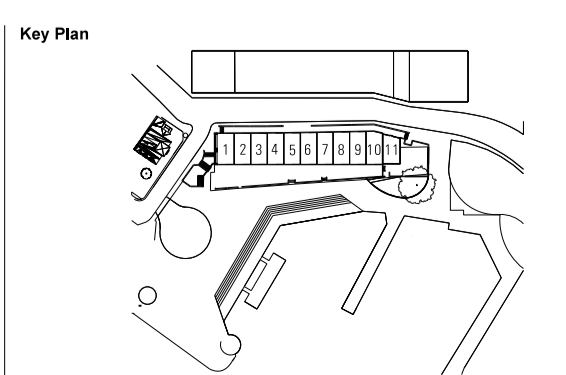
Project Title  
**CAMPBELL'S STORES**  
SYDNEY HARBOUR

Survey Notes:  
Drawings are based on As built drawings and Survey information provided by SPSA, to form the basis for the floor levels of Level 01 and 02 as well as the roof ridge level.  
Surveys are undertaken to MGA North point, and AHD Datum.  
Where site levels have been provided registered to Fort Denison levels, RL 0.00 AHD is assumed to correlate to Fort Denison -0.025m.  
Survey used:  
"11848-REV C"  
"11848-B-Markups"  
"12041-2004"  
For adjacent buildings used:  
"12041-Rev01"

Rev Date App Ckd Revision or reason for Issue

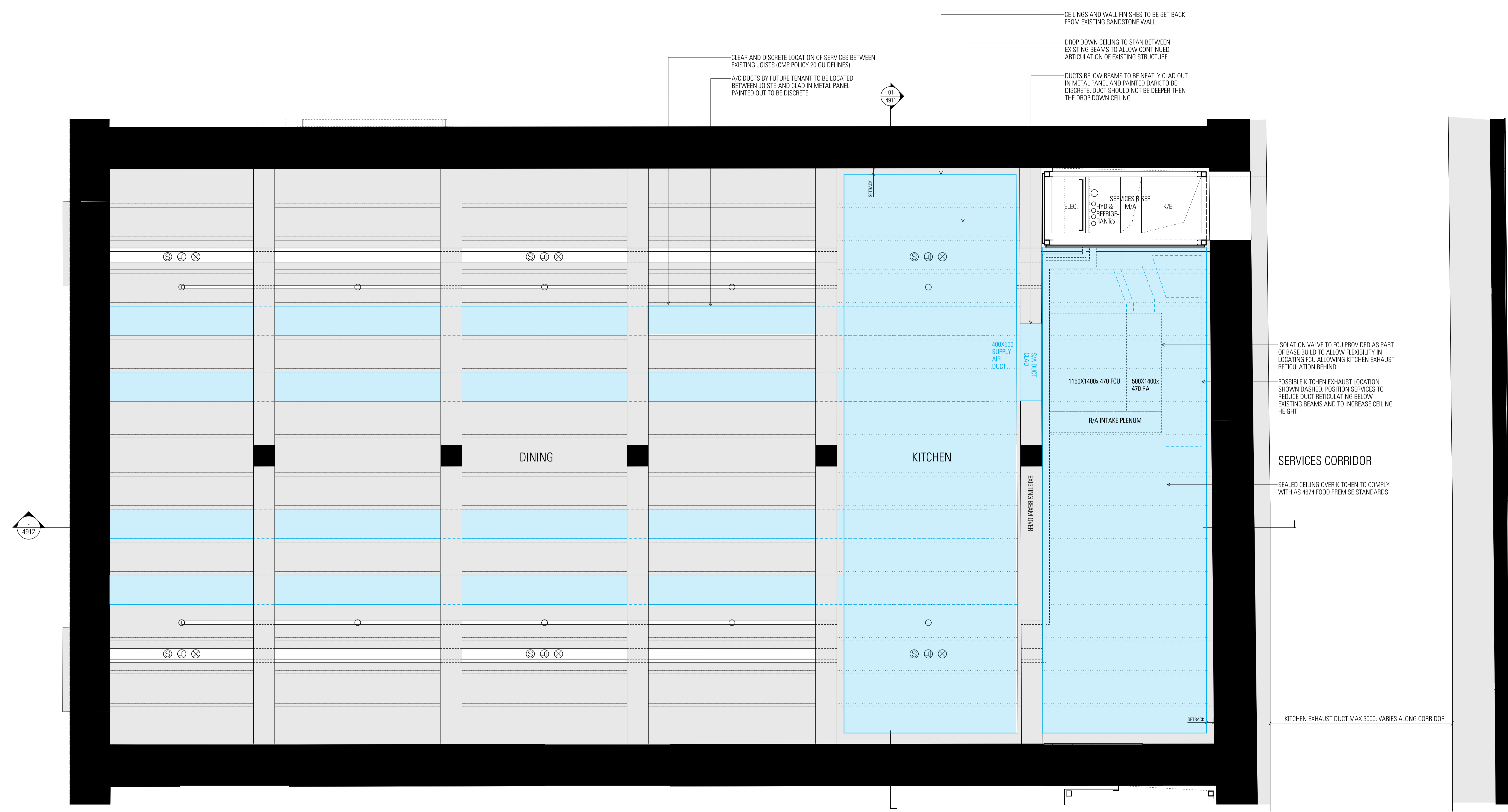
A	1202516	BM	Response to Submittals
---	---------	----	------------------------

Scale / North Point:  
1:25 @ B1: 0 0.25 0.5 0.75 1m  
Do not scale from drawing. Use marked dimensions.  
To be used in conjunction with all other Consultant's drawings.  
The Architect to be immediately notified of any discrepancies.  
Copyright on this drawing retained by the Architect.



Drawing Title  
**INDICATIVE TENANCY FITOUT - KITCHEN**  
**TYPICAL BAY GROUND LEVEL PLAN**  
JPW Project Number  
12006  
Drawing Status  
EA  
Drawing Number  
EA-A-4913  
Revision  
A

NOTE:  
 INDICATIVE TENANCY FITOUT SHOWN IN BLUE  
 SUBJECT TO A SEPARATE DA APPLICATION.  
 NOT INCLUDED AS PART OF THIS APPLICATION.



Architect  
**JPW JOHNSON PILTON WALKER**  
 Johnson Pilton Walker Pty Ltd ACN 095 778 886  
 Level 10, Plaza Building, Australia Square  
 95 Pitt Street  
 Sydney NSW 2000, Australia  
 Telephone +61 2 9259 5900  
 Facsimile +61 2 9259 5999  
 www.jpww.com.au

Client  
 Tallawanda Pty Ltd  
 Suite 301, 35 Lime St, Sydney NSW 2000  
 Project Manager & Quantity Surveyor  
 Altus Page Kirkland  
 The Pickett Building, 1 Market Street, Sydney NSW 2000  
 Telephone +61 2 9283 7311  
 www.altusgroup.com

Structural Engineer  
 Northrop Consulting Engineers Pty Ltd  
 Level 11, 345 George Street, Sydney, NSW 2000  
 Telephone +61 2 9241 4189 Facsimile +61 2 9241 4324  
 http://www.northrop.com.au  
 Structural & Civil Engineer  
 Taylor Thomson Whitting Consulting Engineers  
 Level 5, 48 O'Connell Street St Leonards NSW 2065  
 Telephone +61 2 9439 7288 Facsimile +61 2 9439 3146  
 www.ttw.com.au

Materials Key  
 Refer to Appendix 2- Materials Board for finishes

PAVE1	GB1	CONC2	MP1	SL
PAVE2	GB2	TIM1	MP2	MS
PAVE3	GL1	TIM2	SS1	GLT
PAVE4	GL2	TLE1	PT1	PC
PAVE5	GL3	TLE2	PT5	
ASPHLT	GL4	TLE3	BL1	
ST1	CONC1	SP1	TR2	

Key

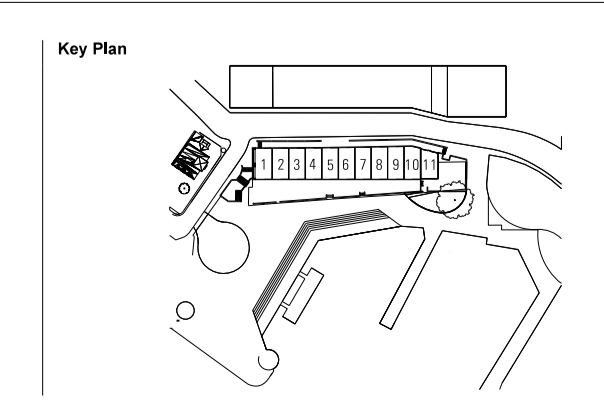
- Existing Works
- New Works
- Fill to existing opening
- Indicative Fit out design (not part of the scope of works)

Project Title  
  
**CAMPBELL'S STORES**  
 SYDNEY HARBOUR

Survey Notes:  
 Drawings are based on As built drawings and Survey Information provided by SPSA. To take into account for the floor levels of level 01 and 02 as well as the roof ridge level.  
 Surveys are undertaken to MGA North point, and AHD Datum.  
 Where site levels have been provided engineer to Fort Denison levels.  
 All 0.00 AHD is assumed to correlate to Fort Denison -0.025m.  
 Survey used:  
 '11945-REV C'  
 '11945-B-Markups'  
 '12041-2004'  
 For adjacent buildings used:  
 '12041-Rev01'

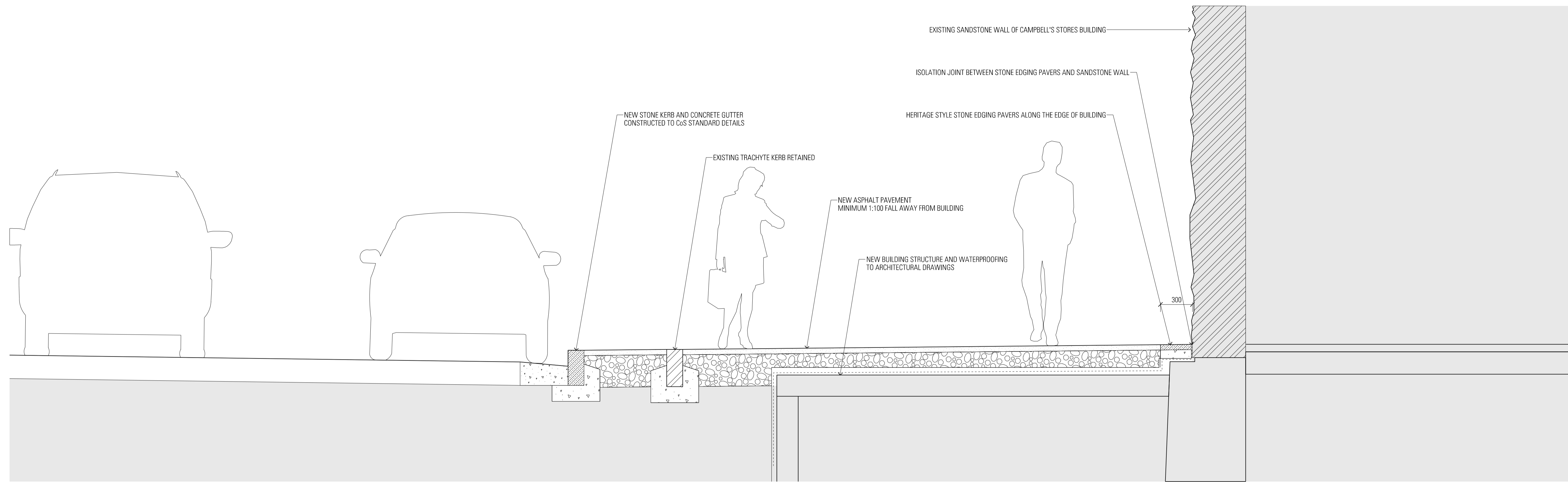
Rev Date  
 A 10/05/16  
 App Ckd Revision or reason for issue  
 BM Response to Submissions

Scale / North Point:  
 1:25 @ B1, 0 0.25 0.5 0.75 1m  
 Do not scale from drawing. Use marked dimensions.  
 To be used in conjunction with all other Consultant's drawings.  
 The Architect to be immediately notified of any discrepancies.  
 Copyright on this drawing retained by the Architect.



Drawing Title  
**INDICATIVE TENANCY FITOUT - KITCHEN**  
 TYPICAL GROUND LEVEL RCP  
 JPW Project Number  
 12006  
 Drawing Status  
 EA  
 Drawing Number  
 EA-A-4914  
 Revision  
 A





01 SECTION 01  
SCALE 1:20

Architect  
**JPW**  
**JOHNSON PILTON WALKER**  
Johnson Pilton Walker Pty Ltd ACN 095 778 886  
Level 10, Plaza Building, Australia Square  
95 Pitt Street  
Sydney NSW 2000, Australia  
Telephone +61 2 9259 5900  
Facsimile +61 2 9259 5999  
www.jpw.com.au

Client  
Tallawaddah Pty Ltd  
Suite 301, 35 Lime St, Sydney NSW 2000  
Project Manager & Quantity Surveyor  
Albus Page Kirkland  
The Pickett Building, 1 Market Street, Sydney NSW 2000  
Telephone +61 2 9283 7311  
www.albusgroup.com

Structural Engineer  
Northrop Consulting Engineers Pty Ltd  
Level 11, 345 George Street, Sydney NSW 2000  
Telephone +61 2 9241 4189 Facsimile +61 2 9241 4324  
http://www.northrop.com.au  
Structural & Civil Engineer  
Taylor Thomson Whiteley Consulting Engineers  
Level 5, 48 Queen Street St, Levea NSW 2005  
Telephone +61 2 9439 7288 Facsimile +61 2 9439 3146  
www.ttw.com.au

Materials Key  
Refer to Appendix 2- Materials Board for finishes

PAVE1	GB1	CONC2	MP1	SL
PAVE2	GB2	TIM1	MP2	MS
PAVE3	GL1	TIM2	SS1	GLT
PAVE4	GL2	TLE1	PT1	PC
PAVE5	GL3	TLE2	PTS	
ASPHLT	GL4	TLE3	BL1	
ST1	CONC1	SP1	TR2	

Key

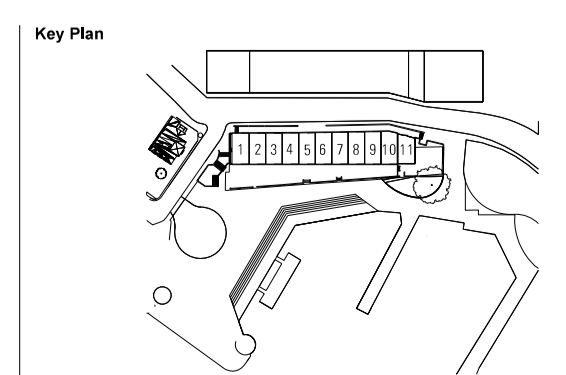
Existing Works
New Works
Drills to existing opening
Indicative Fit out design (not part of the scope of works)

Project Title  
**CAMPBELL'S STORES**  
SYDNEY HARBOUR

Survey Notes  
Drawings are based on As built drawings and Survey Information provided by SSHA, to form the basis for the floor levels of Level 01 and 02 as well as the roof ridge level.  
Surveys are undertaken to MGA North datum, and AHD Datum.  
Where elevations have been provided registered to Fort Denison levels, RL 0.00 AHD is assumed to correlate to Fort Denison -0.025m.  
Survey used:  
"11845-REV C"  
"11845-@-Markups"  
"12041\_2004"  
For adjacent buildings used:  
"12041\_Rev01"

Rev	Date	App Ckd	Revision or reason for issue
A	10/05/16	BM	Response to Submissions

Scale / North Point:  
1:20@ B1, 0 0.2 0.4 0.6 1M  
1:50@ A3  
Do not scale from drawing. Use marked dimensions.  
To be used in conjunction with all other Consultant's drawings.  
The Architect to be immediately notified of any discrepancies.  
Copyright on this drawing retained by the Architect.



Drawing Title  
**LANDSCAPE DETAILS**  
JPW Project Number  
**12006**  
Drawing Status  
**EA**  
Drawing Number  
**EAL-4101**  
Revision  
**A**