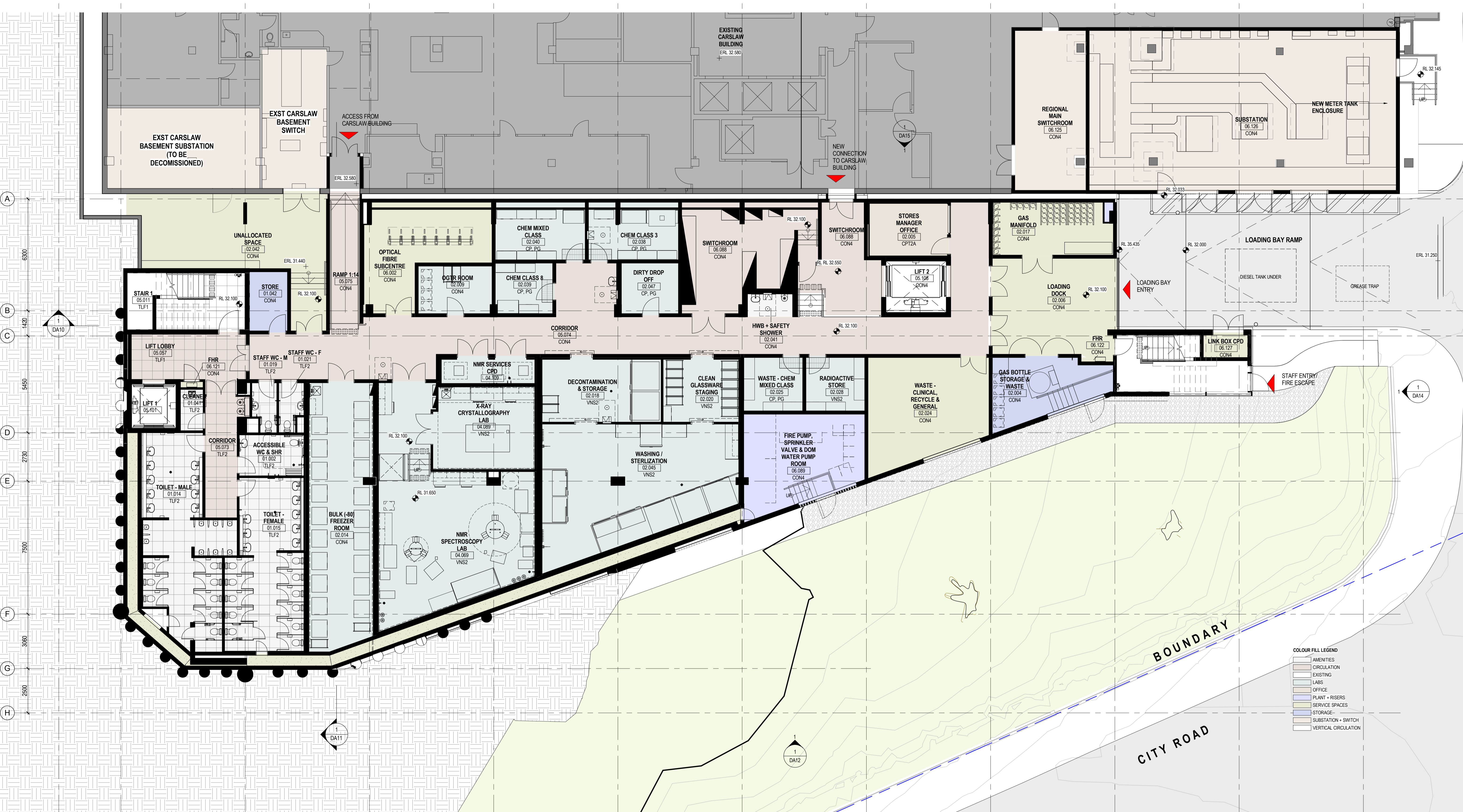


X 1 2 3 4 5 6 7 8 9 10 11
 3500 7000 7000 7000 7000 7000 7000 7000 7000 7000 7000



COLOUR FILL LEGEND

- AMENITIES
- CIRCULATION
- EXISTING
- LABS
- OFFICE
- PLANT + RISERS
- SERVICE SPACES
- STORAGE
- SUBSTATION + SWITCH
- VERTICAL CIRCULATION

| | | | | | |
|------------------------|-----------------------|------|------------|---|--------|
| 09/02/2016 11:38:11 AM | FOR INFORMATION | MS | 13.09.2016 | 0 | 1m |
| REV | DESCRIPTION OF CHANGE | CHKD | DATE | | 20m A1 |

CONSULTANT

| | | |
|--|--|---|
| Access Consultant Cheung Access | ESD Consultant JHA Consulting Engineers | Mechanical Engineer JHA Consulting Engineers |
| Code Compliance B M + G Pty Ltd | Facade Engineer Surface Design Consult. Pty Ltd | Plumbing Engineer JHA Consulting Engineers |
| Camera/Security Engineer JHA Consulting Engineers | Fire Engineer Defire Pty Limited | Structural Engineer Northrop Engineers Pty Ltd |
| Electrical Engineer JHA Consulting Engineers | Landscape Architects OCULUS Pty Ltd | |

CLIENT

RICHARD CROOKES CONSTRUCTIONS

THE UNIVERSITY OF SYDNEY

ARCHITECTS

HDR RICE DAUBNEY

Level 1, 110 Walker Street, North Sydney NSW 2060, Australia
 +61 2 9956 2666 | hdr@ricedaubney.com | hdrinc.com

PROJECT

**LEES1 BUILDING (F07)
THE UNIVERSITY OF SYDNEY
CITY ROAD, CAMPERDOWN**

PROJECT NUMBER
271821_19H

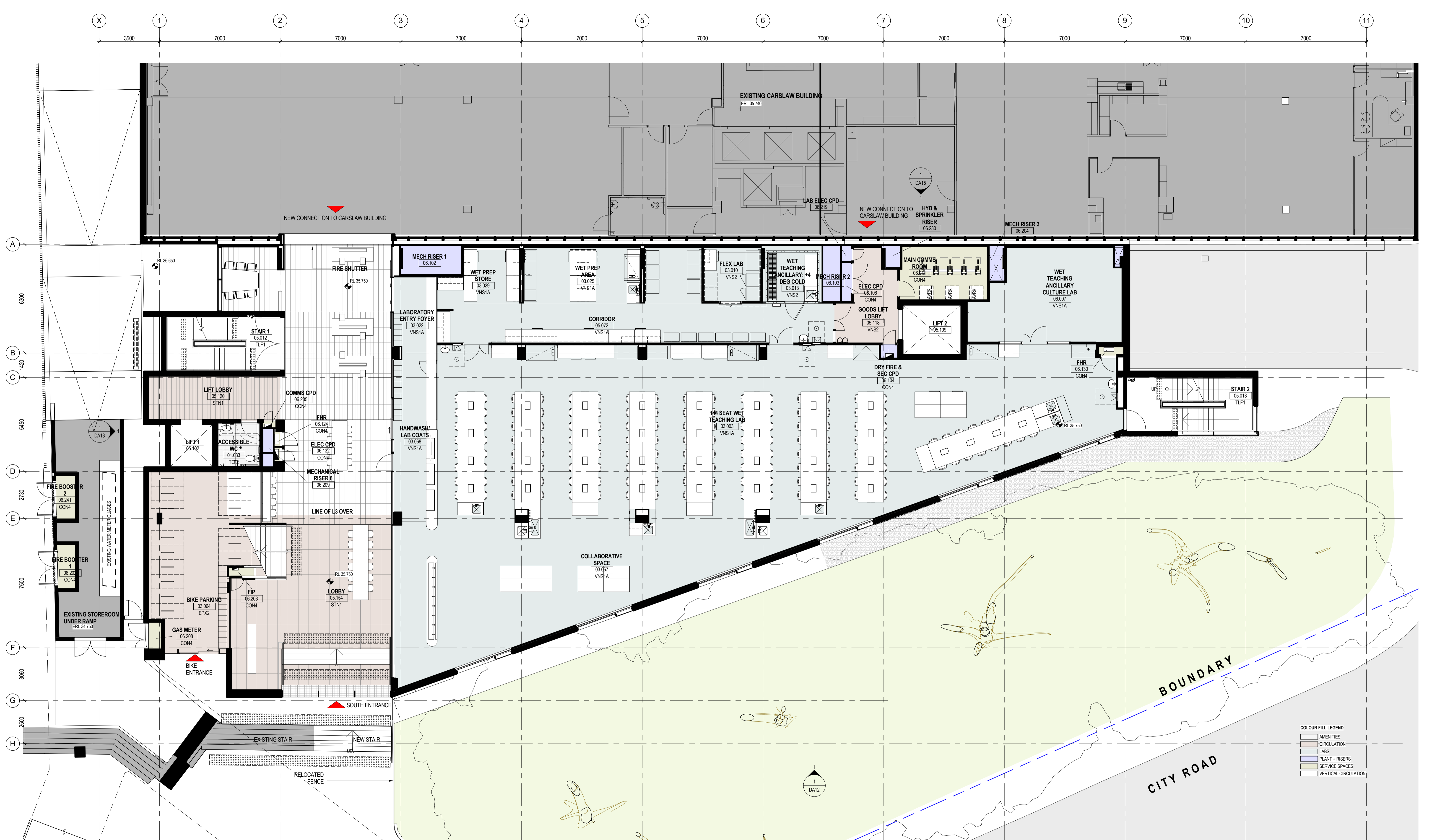
DRAWING TITLE

PLAN LEVEL 01

| | | |
|------------------------|-----------------------------------|--------------------|
| SCALE 1: 100 @ A1 | CHECKED MS | DATE 13.09.2016 |
| CONTRACT NUMBER TBC | DRAWING NUMBER HDR-AR-DWG-DA01 | ISSUE G |

THIS DOCUMENT IS THE COPYRIGHT OF THE RICE DAUBNEY GROUP (NSW) PTY. LTD. ALL INFORMATION ILLUSTRATED ON THIS DOCUMENT IS TO BE CHECKED AND VERIFIED ON SITE. IN THE EVENT OF DISCREPANCIES REFER TO ARCHITECT PRIOR TO COMMENCEMENT OF THE WORK. DO NOT SCALE DRAWINGS MANUALLY OR ELECTRONICALLY.

C:\v\2016\15H\LEES_1_BASE BUILDING_sameh.hosny@hdrinc.com.nrw



COLOUR FILL LEGEND

- AMENITIES
- CIRCULATION
- LABS
- PLANT + RISERS
- SERVICE SPACES
- VERTICAL CIRCULATION

| | | | | | |
|------------------------|-----------------------|------|------------|---|--------|
| 04/02/2016 11:38:32 AM | FOR INFORMATION | MS | 13.09.2016 | 0 | 1m |
| REV | DESCRIPTION OF CHANGE | CHKD | DATE | | 20m A1 |

CONSULTANT

| | | |
|---|--|---|
| Access Consultant Cheung Access | ESD Consultant JHA Consulting Engineers | Mechanical Engineer JHA Consulting Engineers |
| Code Compliance B M + G Pty Ltd | Facade Engineer Surface Design Consult. Pty Ltd | Plumbing Engineer JHA Consulting Engineers |
| Comms/Security Engineer JHA Consulting Engineers | Fire Engineer Defire Pty Limited | Structural Engineer Northrop Engineers Pty Ltd |
| Electrical Engineer JHA Consulting Engineers | Landscape Architects OCULUS Pty Ltd | |

CLIENT

RICHARD CROOKES CONSTRUCTIONS

THE UNIVERSITY OF SYDNEY

ARCHITECTS

HDR RICE DAUBNEY

Level 1, 110 Walker Street, North Sydney NSW 2060, Australia
+61 2 9956 2666 | hdr@riceaubney.com | hdrinc.com

PROJECT

LEES1 BUILDING (F07)
THE UNIVERSITY OF SYDNEY
CITY ROAD, CAMPERDOWN

PROJECT NUMBER
271821_19H

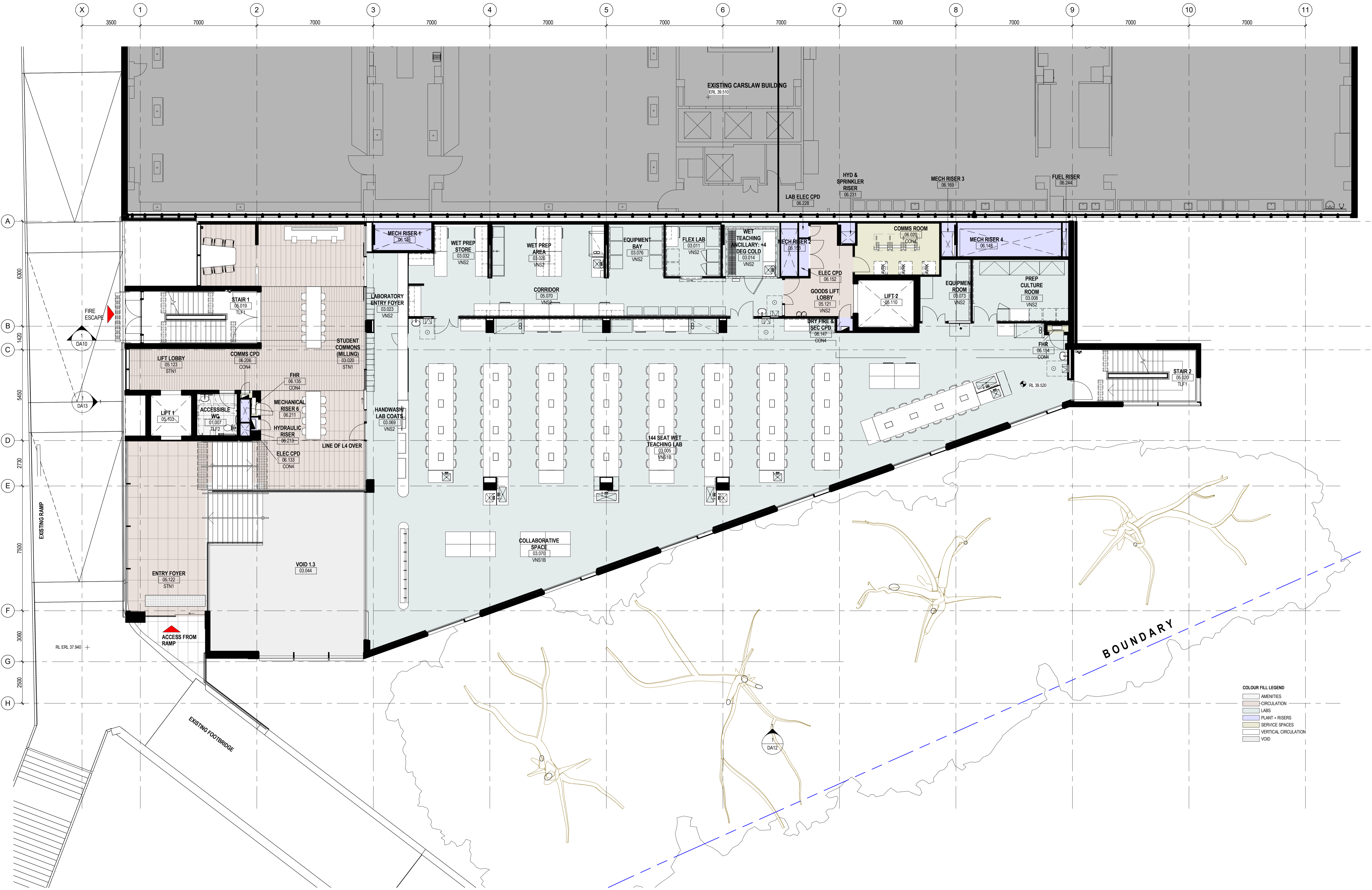
DRAWING TITLE

PLAN LEVEL 02

| | | |
|------------------------|-----------------------------------|--------------------|
| SCALE 1: 100 @ A1 | CHECKED MS | DATE 13.09.2016 |
| CONTRACT NUMBER TBC | DRAWING NUMBER HDR-AR-DWG-DA02 | ISSUE G |

THIS DOCUMENT IS THE COPYRIGHT OF THE RICE DAUBNEY GROUP (NSW) PTY. LTD. ALL INFORMATION ILLUSTRATED ON THIS DOCUMENT IS TO BE CHECKED AND VERIFIED ON SITE. IN THE EVENT OF DISCREPANCIES REFER TO ARCHITECT PRIOR TO COMMENCEMENT OF THE WORK. DO NOT SCALE DRAWINGS MANUALLY OR ELECTRONICALLY.

C:\vt\2016\115H LEES 1_BASE BUILDING_sameh.hosny@hdrinc.com.nwt



| | | | | | |
|-----------------------|-----------------------|------|------------|---|--------|
| 9/16/2016 11:38:57 AM | FOR INFORMATION | MS | 13.09.2016 | 0 | 1m |
| REV | DESCRIPTION OF CHANGE | CHKD | DATE | | 20m A1 |

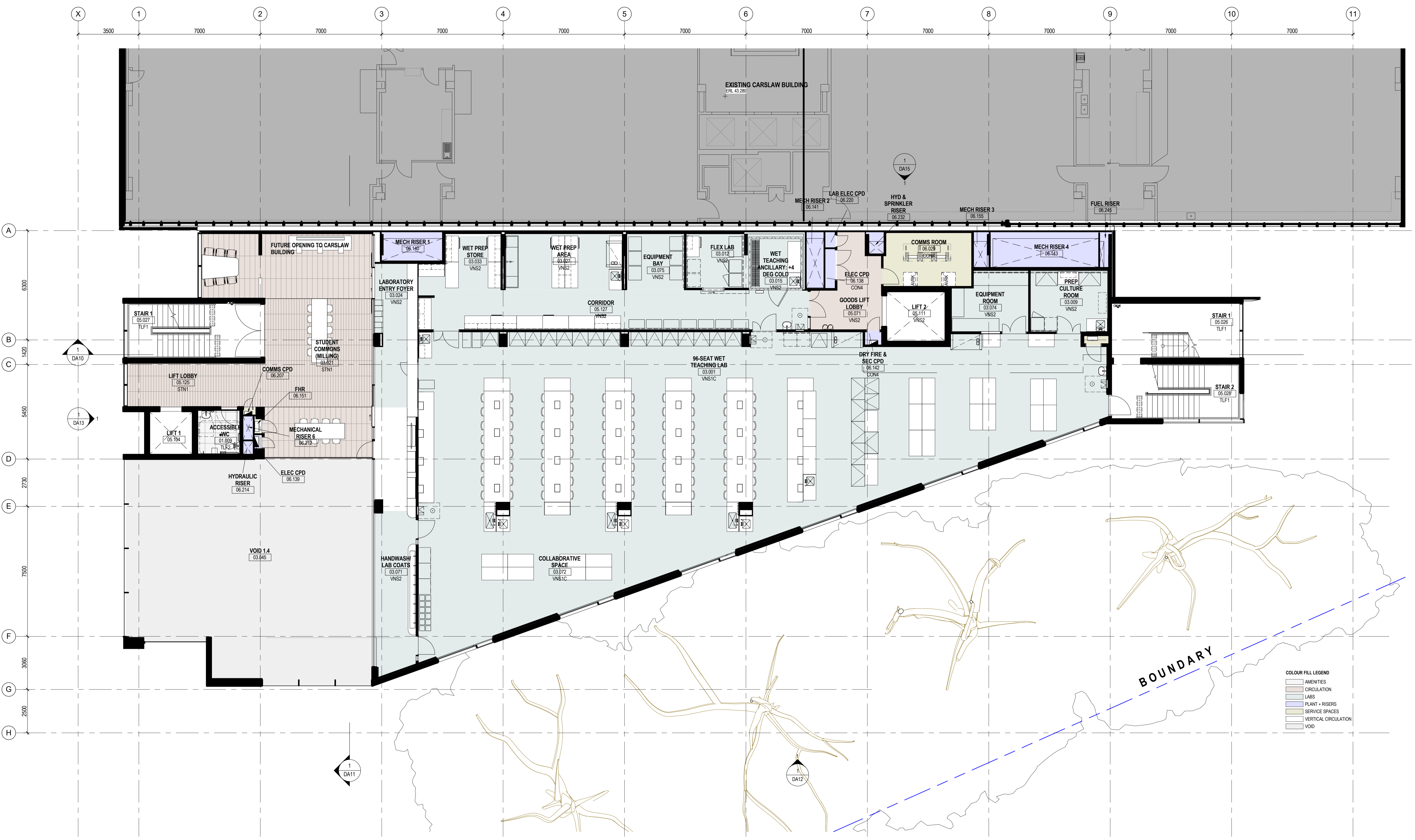
| | |
|---|--|
| CONSULTANT | CLIENT |
| Access Consultant Cheung Access | RICHARD CROOKES CONSTRUCTIONS |
| Code Compliance B.M. + G. Pty Ltd | THE UNIVERSITY OF SYDNEY |
| Comms/Security Engineer JHA Consulting Engineers | ARCHITECTS |
| Electrical Engineer JHA Consulting Engineers | HDR RICE DAUBNEY |
| ESD Consultant JHA Consulting Engineers | Level 1, 110 Walker Street, North Sydney NSW 2060, Australia +61 2 9956 2666 hdr@ricedaubney.com hdrinc.com |
| Facade Engineer Surface Design Consult. Pty Ltd | |
| Fire Engineer Defire Pty Limited | |
| Structural Engineer Northrop Engineers Pty Ltd | |
| Landscape Architects OCULUS Pty Ltd | |

| | |
|---|----------------------------|
| PROJECT | DRAWING TITLE |
| LEES1 BUILDING (F07) THE UNIVERSITY OF SYDNEY CITY ROAD, CAMPERDOWN | PLAN LEVEL 03 |
| PROJECT NUMBER 271821_19H | SCALE 1:100 @ A1 |

| | |
|-------------------------------|--|
| CHECKED MS | DATE 13.09.2016 |
| CONTRACT NUMBER TBC | DRAWING NUMBER HDR-AR-DWG-DA03 |
| ISSUE G | |

THIS DOCUMENT IS THE COPYRIGHT OF THE RICE DAUBNEY GROUP NSW PTY LTD.
ALL INFORMATION ILLUSTRATED ON THIS DOCUMENT IS TO BE CHECKED AND VERIFIED ON SITE.
IN THE EVENT OF DISCREPANCIES REFER TO ARCHITECT PRIOR TO COMMENCEMENT OF THE WORK.
DO NOT SCALE DRAWINGS MANUALLY OR ELECTRONICALLY.

C:\vt\201611\15H LEES 1_BASE BUILDING_samheh.hosny@hdrinc.com.nst



| | | | | | | |
|-----------------------|-----------------------|------|------------|---|----|--------|
| 9/16/2016 11:38:28 AM | FOR INFORMATION | MS | 13.09.2016 | 0 | 1m | 20m A1 |
| REV | DESCRIPTION OF CHANGE | CHKD | DATE | | | |

CONSULTANT

Access Consultant
Cheung Access

Code Compliance
B M + G Pty Ltd

Comms/Security Engineer
JHA Consulting Engineers

Electrical Engineer
JHA Consulting Engineers

ESD Consultant
JHA Consulting Engineers

Facade Engineer
Surface Design Consult. Pty Ltd

Fire Engineer
Defire Pty Limited

Landscape Architects
OCULUS Pty Ltd

Mechanical Engineer
JHA Consulting Engineers

Plumbing Engineer
JHA Consulting Engineers

Structural Engineer
Northrop Engineers Pty Ltd

CLIENT

RICHARD CROOKES CONSTRUCTIONS

THE UNIVERSITY OF SYDNEY

ARCHITECTS

HDR RICE DAUBNEY

Level 1, 110 Walker Street, North Sydney NSW 2060, Australia
+61 2 9956 2666 | hdr@riceaubney.com | hdrinc.com

PROJECT

LEES1 BUILDING (F07)
THE UNIVERSITY OF SYDNEY
CITY ROAD, CAMPERDOWN

PROJECT NUMBER
271821_19H

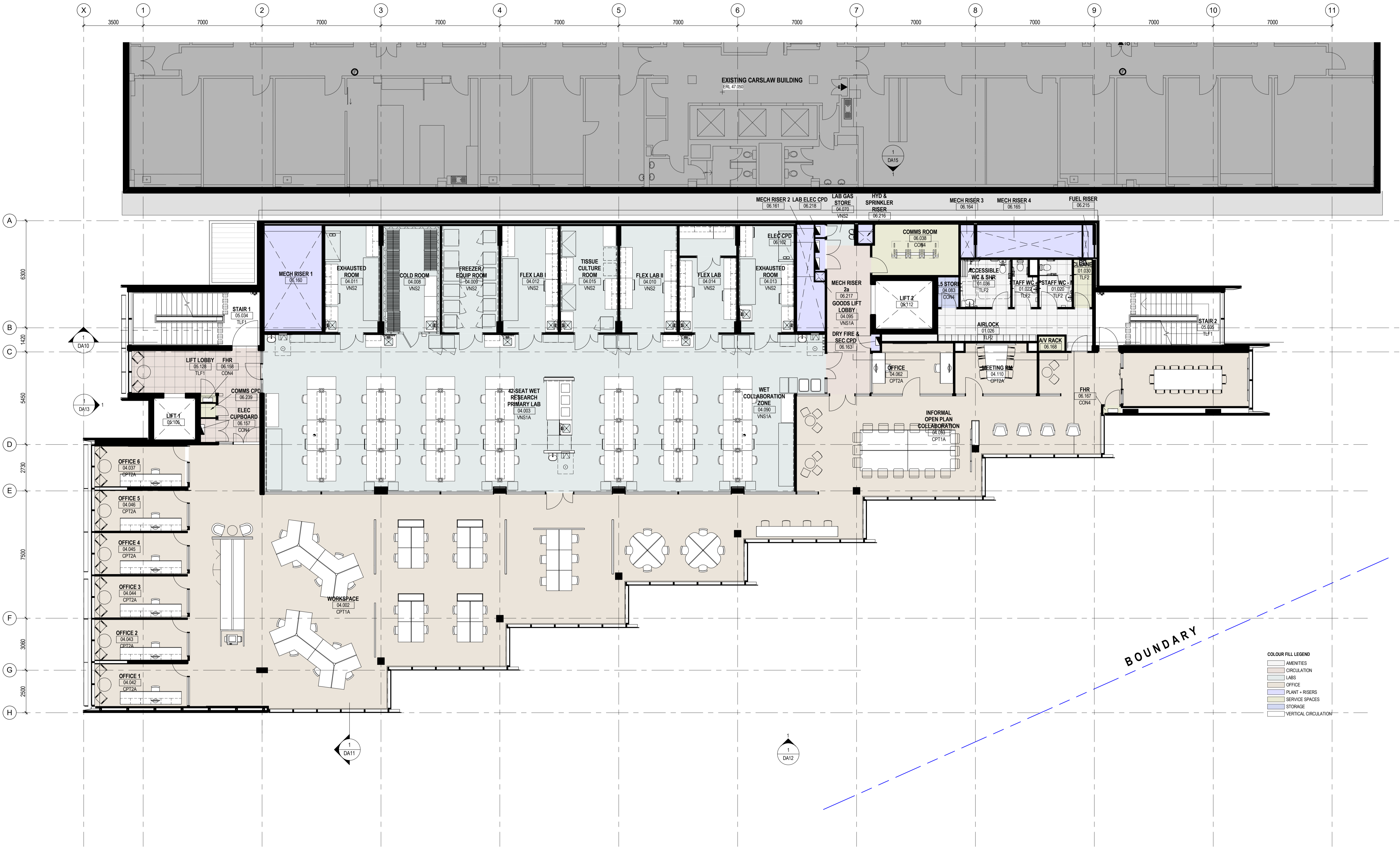
DRAWING TITLE

PLAN LEVEL 04

| | | |
|-----------------|-----------------|------------|
| SCALE | CHECKED | DATE |
| 1:100 @ A1 | MS | 13.09.2016 |
| CONTRACT NUMBER | DRAWING NUMBER | ISSUE |
| TBC | HDR-AR-DWG-DA04 | G |

THIS DOCUMENT IS THE COPYRIGHT OF THE RICE DAUBNEY GROUP (NSW) PTY LTD. ALL INFORMATION ILLUSTRATED ON THIS DOCUMENT IS TO BE CHECKED AND VERIFIED ON SITE. IN THE EVENT OF DISCREPANCIES REFER TO ARCHITECT PRIOR TO COMMENCEMENT OF THE WORK. DO NOT SCALE DRAWINGS MANUALLY OR ELECTRONICALLY.

C:\vt\201611\H LEES 1_BASE BUILDING_sam@hdrinc.com



COLOUR FILL LEGEND

- AMENITIES
- CIRCULATION
- LABS
- OFFICE
- PLANT + RISERS
- SERVICE SPACES
- STORAGE
- VERTICAL CIRCULATION

| | | | | | |
|------------------------|-----------------------|------|------------|---|--------|
| 04/09/2016 11:38:33 AM | FOR INFORMATION | MS | 13.09.2016 | 0 | 1m |
| REV | DESCRIPTION OF CHANGE | CHKD | DATE | | 10m A1 |

CONSULTANT

| | | |
|---|--|---|
| Access Consultant Cheung Access | ESD Consultant JHA Consulting Engineers | Mechanical Engineer JHA Consulting Engineers |
| Code Compliance B M + G Pty Ltd | Facade Engineer Surface Design Consult. Pty Ltd | Plumbing Engineer JHA Consulting Engineers |
| Comms/Security Engineer JHA Consulting Engineers | Fire Engineer Defire Pty Limited | Structural Engineer Northrop Engineers Pty Ltd |
| Electrical Engineer JHA Consulting Engineers | Landscape Architects OCULUS Pty Ltd | |

CLIENT

RICHARD CROOKES CONSTRUCTIONS

THE UNIVERSITY OF SYDNEY

ARCHITECTS

RICE DAUBNEY

Level 1, 110 Walker Street, North Sydney NSW 2060, Australia
+61 2 9956 2666 | hrd@ricedaubney.com | hdrinc.com

PROJECT

LEES1 BUILDING (F07)
THE UNIVERSITY OF SYDNEY
CITY ROAD, CAMPERDOWN

PROJECT NUMBER
271821_19H

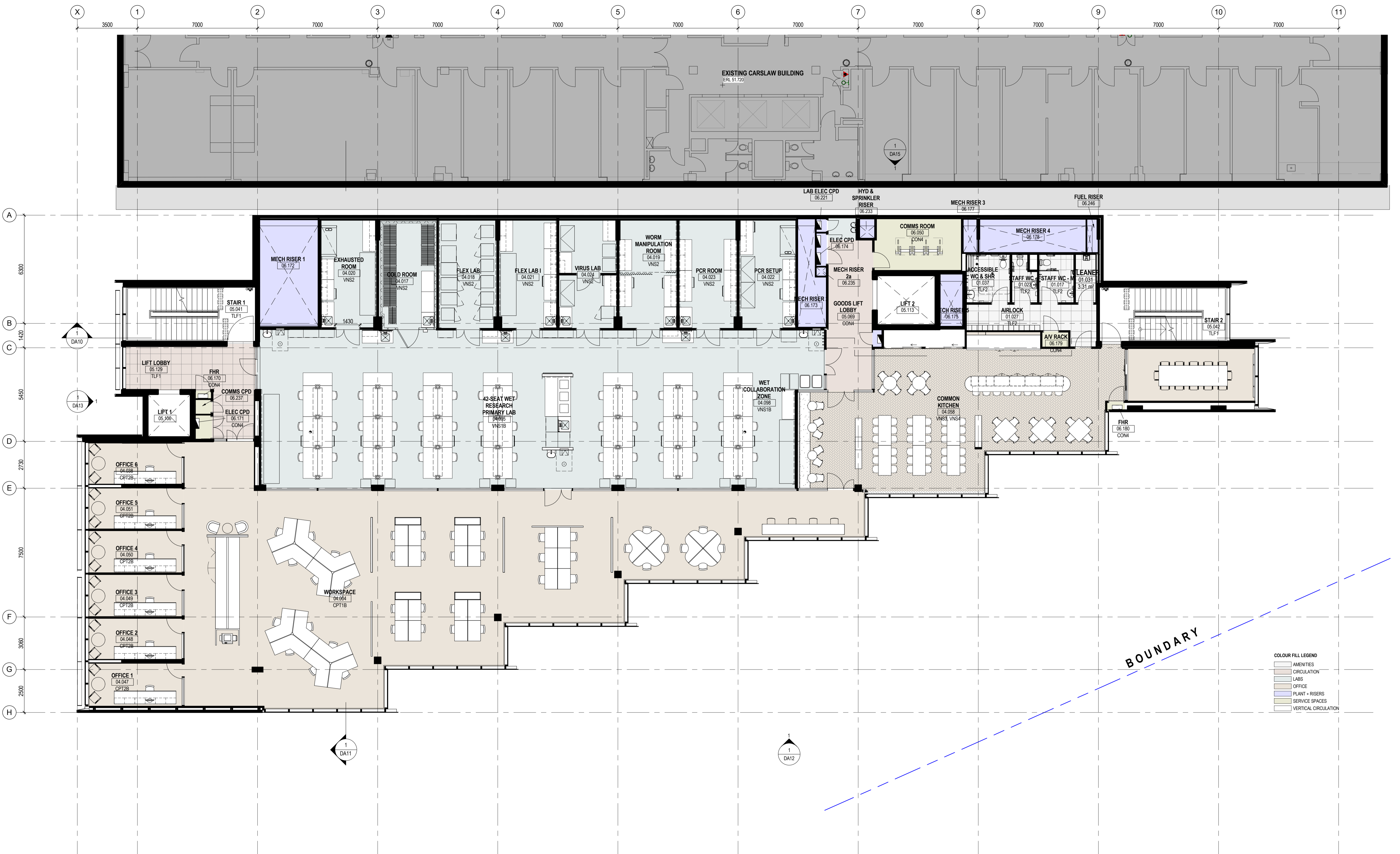
DRAWING TITLE

PLAN LEVEL 05

| | | |
|------------------------|-----------------------------------|--------------------|
| SCALE 1: 100 @ A1 | CHECKED MS | DATE 13.09.2016 |
| CONTRACT NUMBER TBC | DRAWING NUMBER HDR-AR-DWG-DA05 | ISSUE G |

THIS DOCUMENT IS THE COPYRIGHT OF THE RICE DAUBNEY GROUP (NSW) PTY. LTD. ALL INFORMATION ILLUSTRATED ON THIS DOCUMENT IS TO BE CHECKED AND VERIFIED ON SITE. IN THE EVENT OF DISCREPANCIES REFER TO ARCHITECT PRIOR TO COMMENCEMENT OF THE WORK. DO NOT SCALE DRAWINGS MANUALLY OR ELECTRONICALLY.

C:\vt\201615H\LEES_1_BASE BUILDING_sameh.hosny@hdrinc.com.nwt



COLOUR FILL LEGEND

| | |
|----------------|----------------------|
| [Light Blue] | AMENITIES |
| [Light Green] | CIRCULATION |
| [Light Yellow] | LABS |
| [Light Purple] | OFFICE |
| [Light Cyan] | PLANT + RISERS |
| [Light Orange] | SERVICE SPACES |
| [Light Grey] | VERTICAL CIRCULATION |

| | | | | | |
|------------------------|-----------------------|------|------------|---|--------|
| 04/09/2016 11:38:40 AM | FOR INFORMATION | MS | 13.09.2016 | 0 | 1m |
| REV | DESCRIPTION OF CHANGE | CHKD | DATE | | 20m A1 |

CONSULTANT

| | | |
|---|--|---|
| Access Consultant Cheung Access | ESD Consultant JHA Consulting Engineers | Mechanical Engineer JHA Consulting Engineers |
| Code Compliance B M + G Pty Ltd | Facade Engineer Surface Design Consult. Pty Ltd | Plumbing Engineer JHA Consulting Engineers |
| Comms/Security Engineer JHA Consulting Engineers | Fire Engineer Defire Pty Limited | Structural Engineer Northrop Engineers Pty Ltd |
| Electrical Engineer JHA Consulting Engineers | Landscape Architects OCULUS Pty Ltd | |

CLIENT

RICHARD CROOKES CONSTRUCTIONS

THE UNIVERSITY OF SYDNEY

ARCHITECTS

RICE DAUBNEY

Level 1, 110 Walker Street, North Sydney NSW 2060, Australia
+61 2 9956 2666 | hdr@ricedaubney.com | hdnrc.com

PROJECT

LEES1 BUILDING (F07)
THE UNIVERSITY OF SYDNEY
CITY ROAD, CAMPERDOWN

PROJECT NUMBER
271821_19H

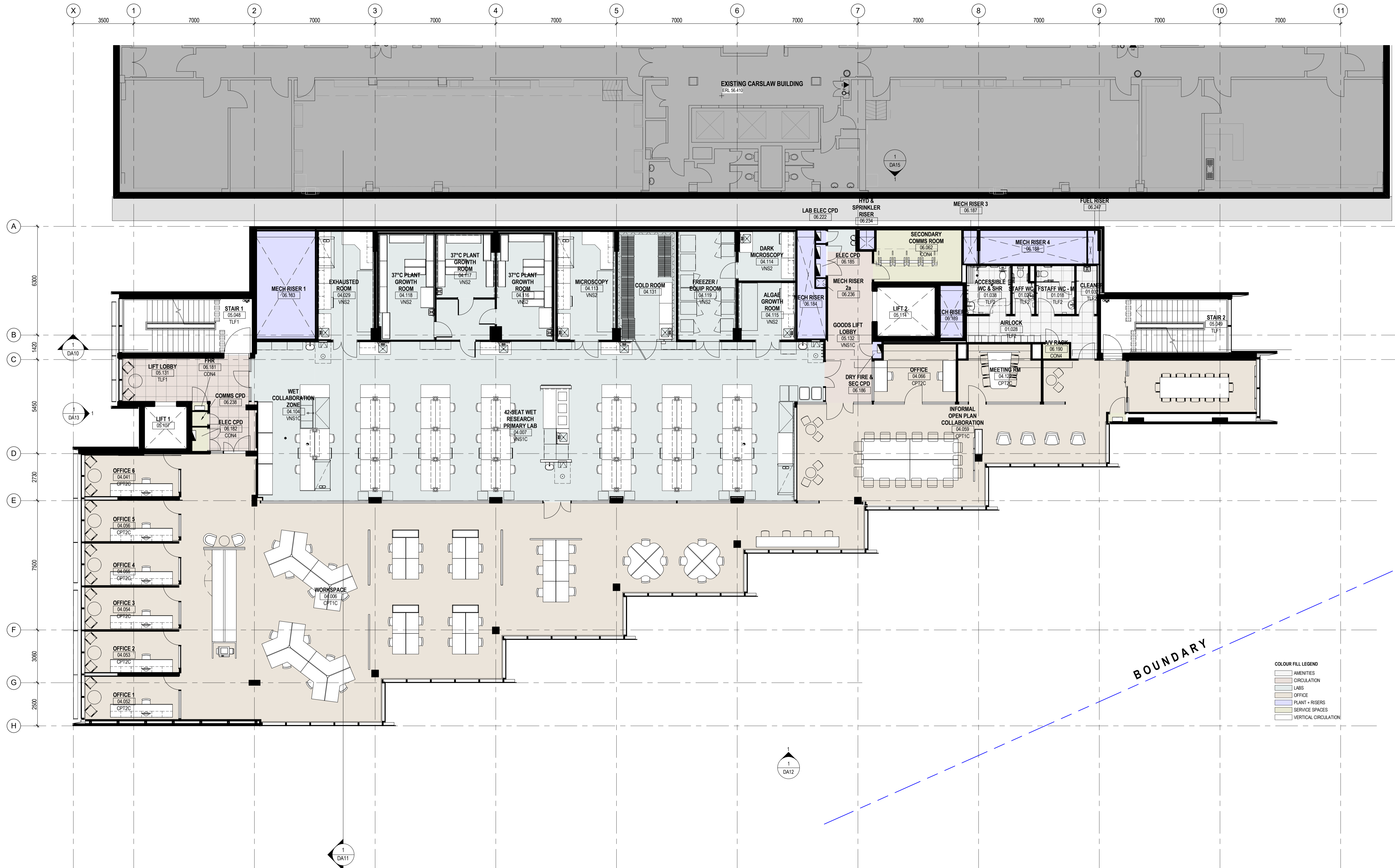
DRAWING TITLE

PLAN LEVEL 06

| | | |
|------------------------|-----------------------------------|--------------------|
| SCALE 1: 100 @ A1 | CHECKED MS | DATE 13.09.2016 |
| CONTRACT NUMBER TBC | DRAWING NUMBER HDR-AR-DWG-DA06 | ISSUE G |

THIS DOCUMENT IS THE COPYRIGHT OF THE RICE DAUBNEY GROUP (NSW) PTY. LTD. ALL INFORMATION ILLUSTRATED ON THIS DOCUMENT IS TO BE CHECKED AND VERIFIED ON SITE. IN THE EVENT OF DISCREPANCIES REFER TO ARCHITECT PRIOR TO COMMENCEMENT OF THE WORK. DO NOT SCALE DRAWINGS MANUALLY OR ELECTRONICALLY.

C:\vt\2016\15H\LEES_1_BASE BUILDING_samh.hosny@hdrinc.com.nst



- COLOUR FILL LEGEND**
- AMENITIES
 - CIRCULATION
 - LABS
 - OFFICE
 - PLANT + RISERS
 - SERVICE SPACES
 - VERTICAL CIRCULATION

| | | |
|------|-----------------------|--------|
| DATE | 13.09.2016 | 10m A1 |
| REV | DESCRIPTION OF CHANGE | |
| MS | CHD | |

CONSULTANT
 Access Consultant
 Cheung Access
 Code Compliance
 B.M. + G. Pty Ltd
 Comms/Security Engineer
 JHA Consulting Engineers
 Electrical Engineer
 JHA Consulting Engineers

ESD Consultant
 JHA Consulting Engineers
 Facade Engineer
 Surface Design Consult. Pty Ltd
 Fire Engineer
 JHA Consulting Engineers
 Landscape Architects
 OCULUS Pty Ltd

Mechanical Engineer
 JHA Consulting Engineers
 Plumbing Engineer
 JHA Consulting Engineers
 Structural Engineer
 Northrop Engineers Pty Ltd

CLIENT
 RICHARD CROOKES CONSTRUCTIONS
 THE UNIVERSITY OF SYDNEY

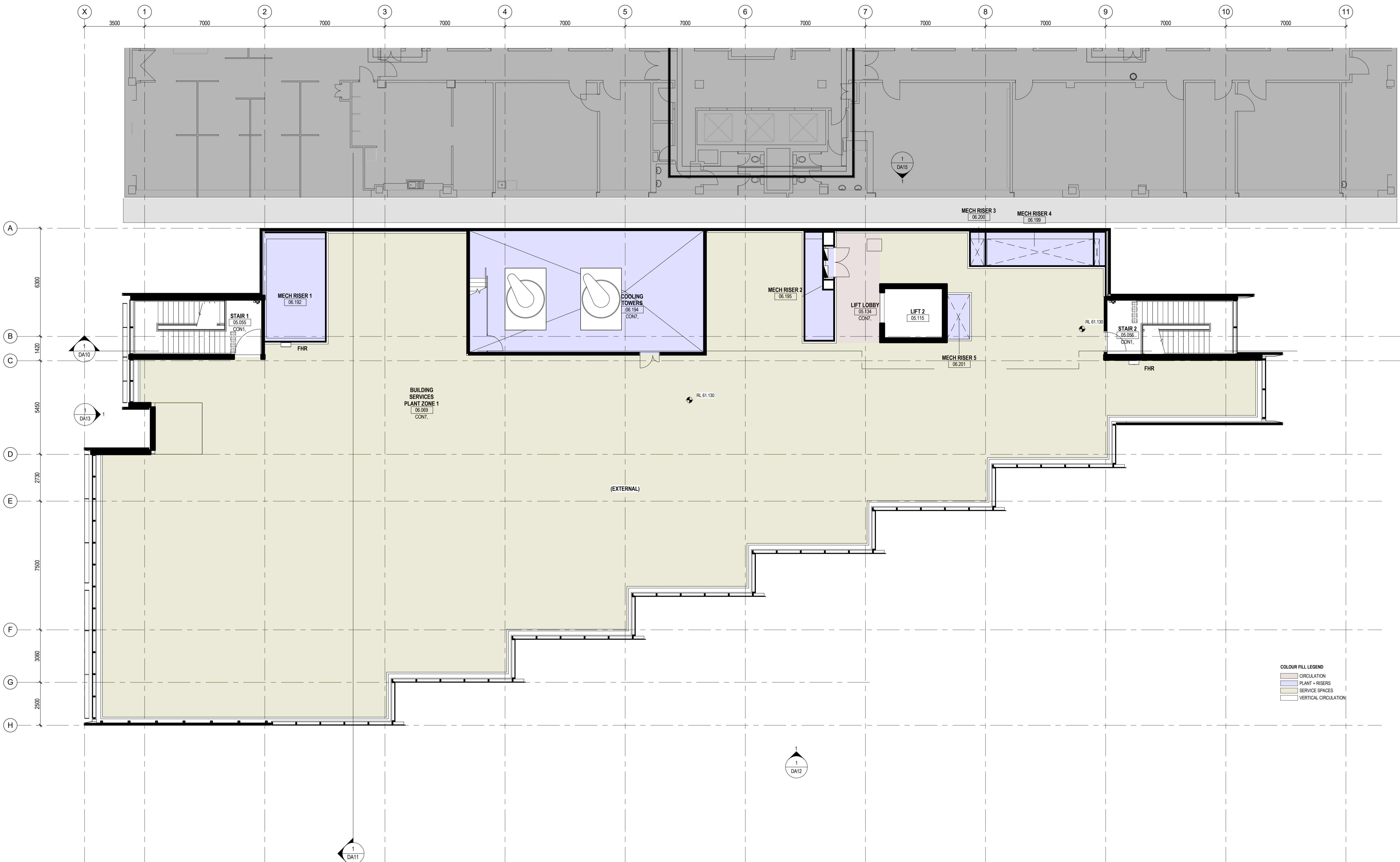
ARCHITECTS
 RICE DAUBNEY
 Level 1, 110 Walker Street, North Sydney NSW 2060, Australia
 +61 2 9956 2666 | hrd@ricedaubney.com | hrdinc.com

PROJECT
 LEES1 BUILDING (F07)
 THE UNIVERSITY OF SYDNEY
 CITY ROAD, CAMPERDOWN
 PROJECT NUMBER
 271821_19H

DRAWING TITLE
 PLAN LEVEL 07

| | | | | | |
|-----------------|------------|----------------|-----------------|-------|------------|
| SCALE | 1:100 @ A1 | CHECKED | MS | DATE | 13.09.2016 |
| CONTRACT NUMBER | TBC | DRAWING NUMBER | HDR-AR-DWG-DA07 | ISSUE | G |

THIS DOCUMENT IS THE COPYRIGHT OF THE RICE DAUBNEY GROUP (NSW) PTY. LTD. ALL INFORMATION ILLUSTRATED ON THIS DOCUMENT IS TO BE CHECKED AND VERIFIED ON SITE. IN THE EVENT OF DISCREPANCIES REFER TO ARCHITECT PRIOR TO COMMENCEMENT OF THE WORK. DO NOT SCALE DRAWINGS MANUALLY OR ELECTRONICALLY.



| | | | | | |
|-----------------------|-----------------------|------|------------|---|--------|
| 9/10/2016 11:38:51 AM | FOR INFORMATION | MS | 13.09.2016 | 0 | 1m |
| REV | DESCRIPTION OF CHANGE | CHKD | DATE | | 20m A1 |

| | |
|--|---|
| CONSULTANT | CLIENT |
| Access Consultant Cheung Access Code Compliance B.M. + G Pty Ltd Camera/Security Engineer JHA Consulting Engineers Electrical Engineer JHA Consulting Engineers | Richard Crookes Constructions The University of Sydney |
| ESD Consultant JHA Consulting Engineers Facade Engineer Surface Design Consult. Pty Ltd Fire Engineer Defire Pty Limited Landscape Architects OCULUS Pty Ltd | Mechanical Engineer JHA Consulting Engineers Plumbing Engineer JHA Consulting Engineers Structural Engineer Northrop Engineers Pty Ltd |

ARCHITECTS

RICE DAUBNEY

Level 1, 110 Walker Street, North Sydney NSW 2060, Australia
+61 2 9956 2666 | hdrricedaubney.com | hdrrinc.com

PROJECT

LEES1 BUILDING (F07)
THE UNIVERSITY OF SYDNEY
CITY ROAD, CAMPERDOWN

PROJECT NUMBER
271821_19H

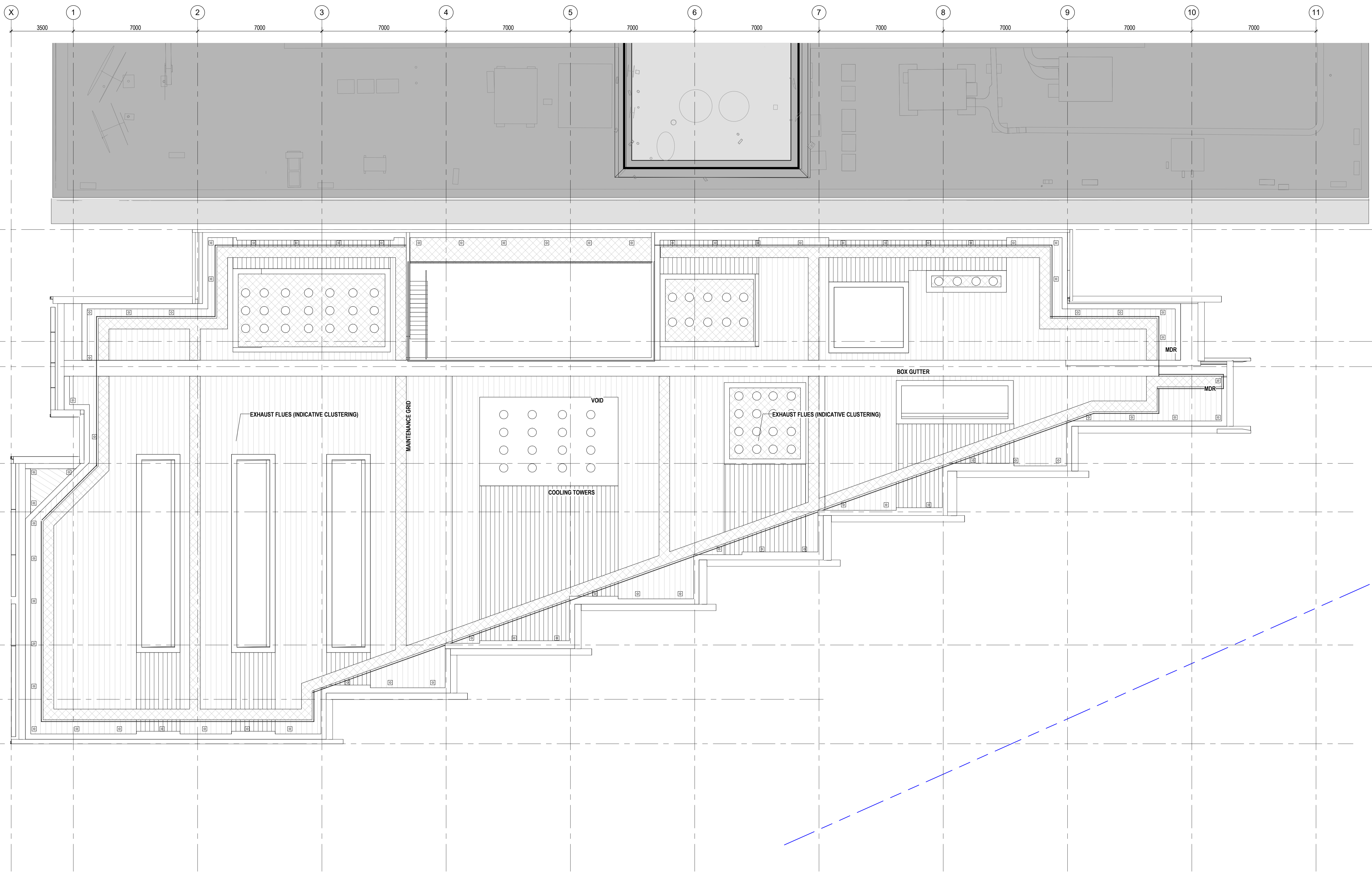
DRAWING TITLE

PLAN LEVEL 08

| | | |
|-----------------|-----------------|------------|
| SCALE | CHECKED | DATE |
| 1:100 @ A1 | MS | 13.09.2016 |
| CONTRACT NUMBER | DRAWING NUMBER | ISSUE |
| TBC | HDR-AR-DWG-DA08 | G |

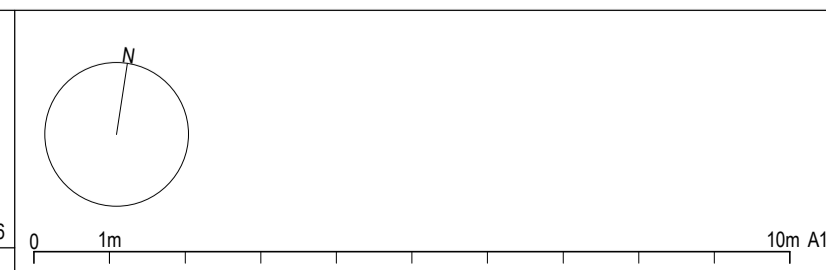
THIS DOCUMENT IS THE COPYRIGHT OF THE RICE DAUBNEY GROUP (NSW) PTY LTD.
ALL INFORMATION ILLUSTRATED ON THIS DOCUMENT IS TO BE CHECKED AND VERIFIED ON SITE.
IN THE EVENT OF DISCREPANCIES REFER TO ARCHITECT PRIOR TO COMMENCEMENT OF THE WORK.
DO NOT SCALE DRAWINGS MANUALLY OR ELECTRONICALLY.

C:\vt\201615H LEES 1_BASE BUILDING_sameh.hosny@hdrrinc.com.nwt



9/10/2016 11:38:54 AM

| REV | DESCRIPTION OF CHANGE | CHKD | DATE |
|-----|-----------------------|------|------------|
| G | FOR INFORMATION | MS | 13.09.2016 |



| CONSULTANT | |
|---|--|
| Access Consultant Cheung Access | ESD Consultant JHA Consulting Engineers |
| Code Compliance B.M. + G. Pty Ltd | Facade Engineer Surface Design Consult. Pty Ltd |
| Comms/Security Engineer JHA Consulting Engineers | Fire Engineer Defire Pty Limited |
| Electrical Engineer JHA Consulting Engineers | Landscape Architects OCULUS Pty Ltd |
| Mechanical Engineer JHA Consulting Engineers | Plumbing Engineer JHA Consulting Engineers |
| Structural Engineer Northrop Engineers Pty Ltd | |

CLIENT

RICHARD CROOKES CONSTRUCTIONS

THE UNIVERSITY OF SYDNEY

ARCHITECTS

RD RICE DAUBNEY

Level 1, 110 Walker Street, North Sydney NSW 2060, Australia
+61 2 9956 2666 | hdricedaubney.com | hdrinc.com

PROJECT

LEES1 BUILDING (F07)
THE UNIVERSITY OF SYDNEY
CITY ROAD, CAMPERDOWN

PROJECT NUMBER
271821_19H

DRAWING TITLE

PLAN ROOF

| SCALE | CHECKED | DATE |
|-----------------|------------------------|------------|
| 1 : 100 @ A1 | MS | 13.09.2016 |
| CONTRACT NUMBER | DRAWING NUMBER | ISSUE |
| TBC | HDR-AR-DWG-DA09 | G |

THIS DOCUMENT IS THE COPYRIGHT OF THE RICE DAUBNEY GROUP (NSW) PTY. LTD.
ALL INFORMATION ILLUSTRATED ON THIS DOCUMENT IS TO BE CHECKED AND VERIFIED ON SITE.
IN THE EVENT OF DISCREPANCIES REFER TO ARCHITECT PRIOR TO COMMENCEMENT OF THE WORK.
DO NOT SCALE DRAWINGS MANUALLY OR ELECTRONICALLY.

C:\vt\2016\15H\LEES 1_BASE BUILDING_sameh.hosny@hdrinc.com.nwt