

# 03

## DESIGN QUALITY

---

### MATERIAL PALETTE AND RELATIONSHIPS

A simple palette of terracotta, off-form concrete, and clear glazing is used. This speaks to the enduring timelessness and permanence of the university. It establishes a similarity to the surrounding buildings forming the edges of Eastern Avenue.

Honesty of material is an important part of the expression. Concrete used to define the base and structural support of the dynamic cantilevers above, while the terracotta - which is integrated into the curtain wall system - is expressed as light-weight dynamic material. Rather than using the thin stone as over-cladding to portray solidity, we use and detail it in a way that expresses its fineness and delicateness.





University identity signage

Terracotta panels or similar solid material

Aluminum screen (estimated to be similar detail/finish to F23) over performance glazing

Clear curtain wall glazing panels

Exposed concrete soffit

Clear entry glazing

Off-form concrete panels



Clear curtain wall glazing panels

Off-form concrete panels

Clear glazing to stair

Clear glazing to teaching labs

Weather louvres

Off-form concrete panels

Loading bay door

Concrete fins to base over weather louvres

# 03

## DESIGN QUALITY

### MATERIAL PALETTE AND RELATIONSHIPS

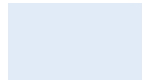
#### Roof finish

- Colorbond roof sheeting
- Colour: Light



#### Southern facade glass

- Clear glass



#### Solid Cladding

- Terracotta tile system
- Colour: Ivory



#### Aluminium screens

- Powdercoated aluminium
- Colour: RAL 9006



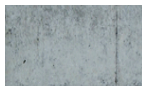
#### Soffit

- White solid board



#### Concrete

- Class 2 finish



- Textured finish



#### Concrete louvres

- Concrete louvres over weather louvres or blanking as required

