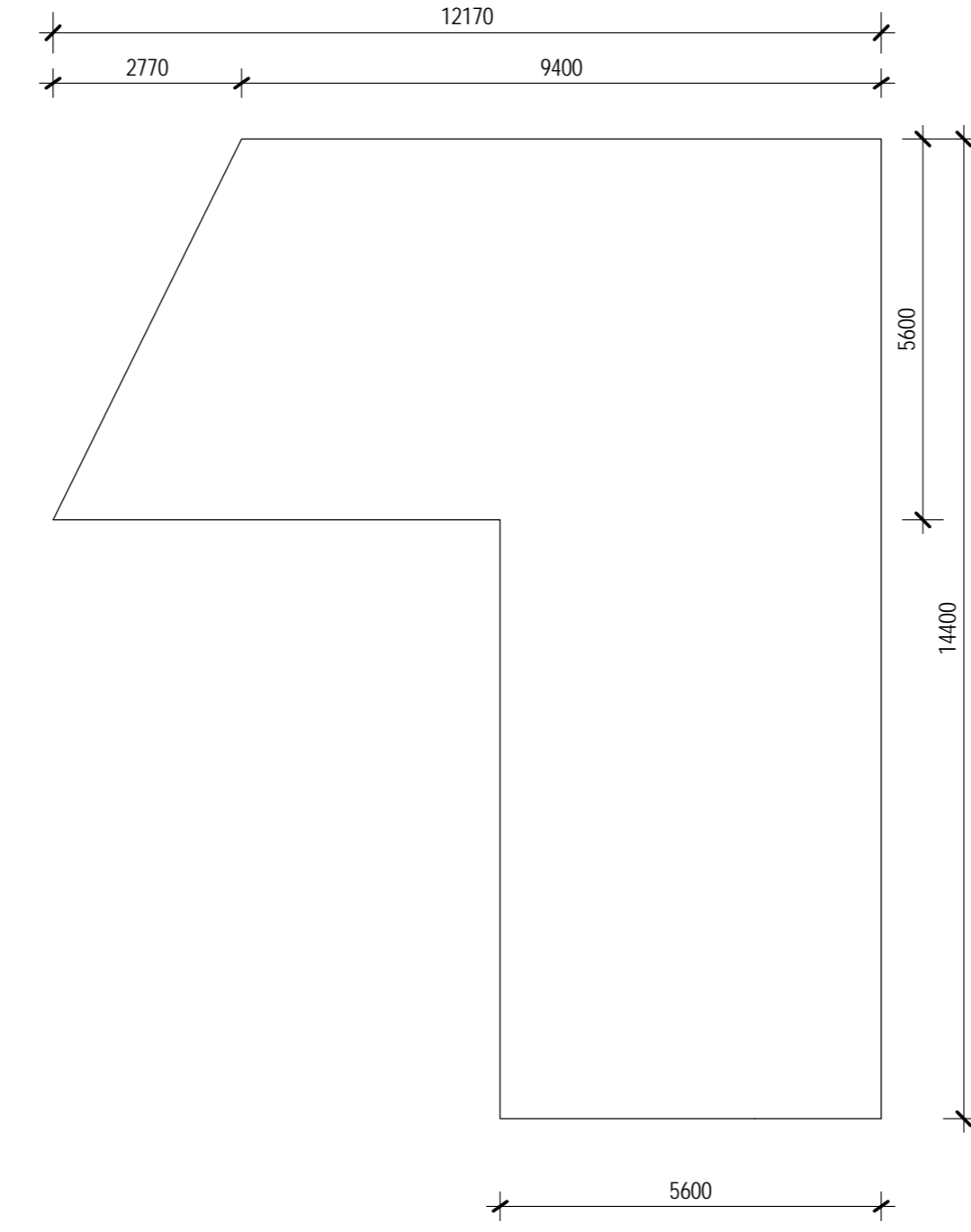
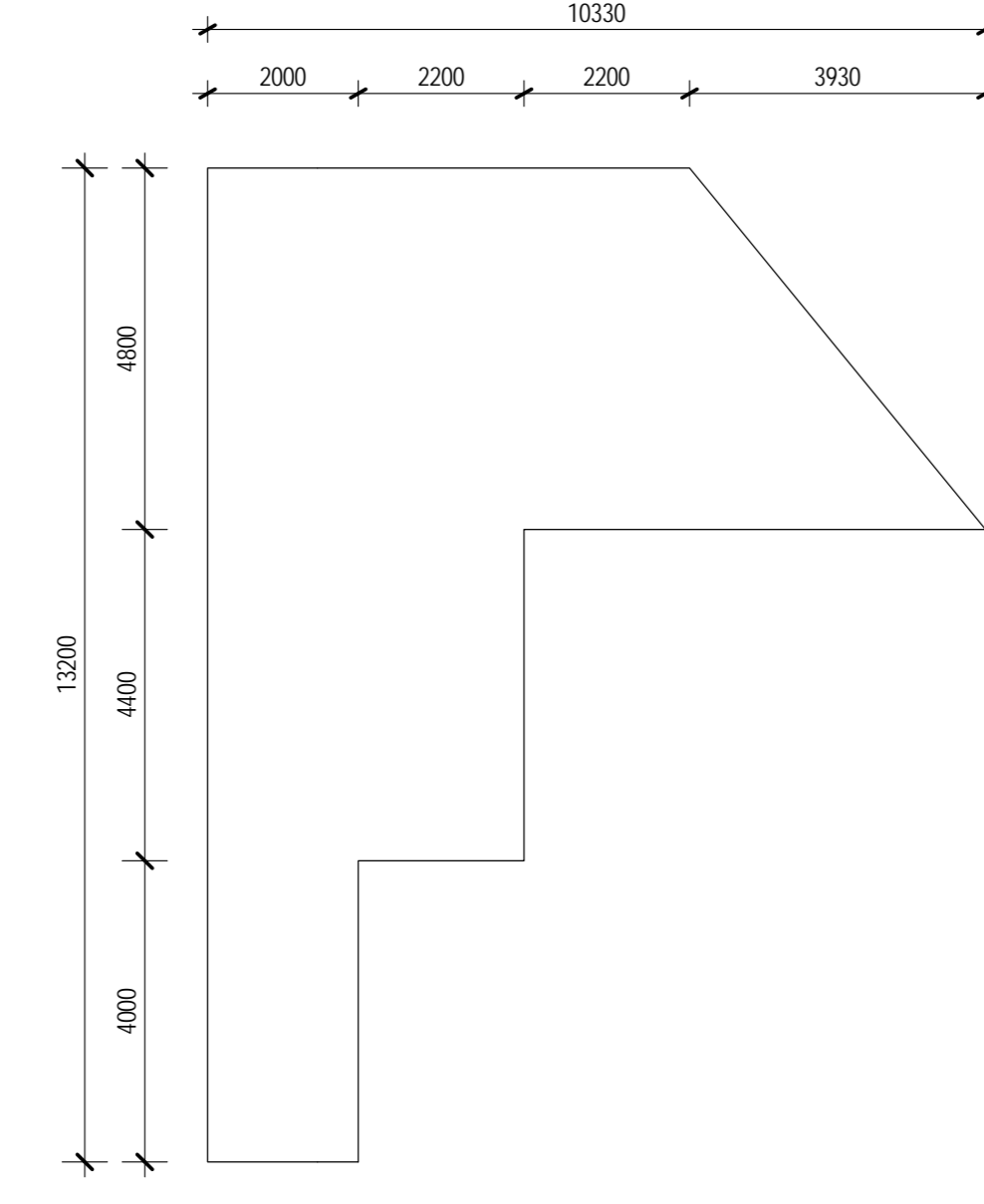


1 DIGITAL SIGN T01 - INTERNAL AXO

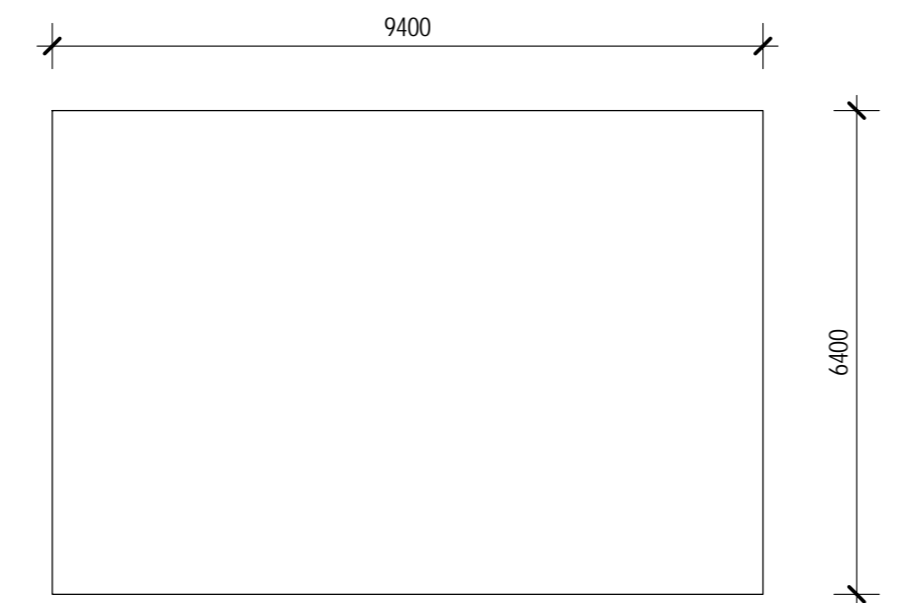
SEE SECTION 5



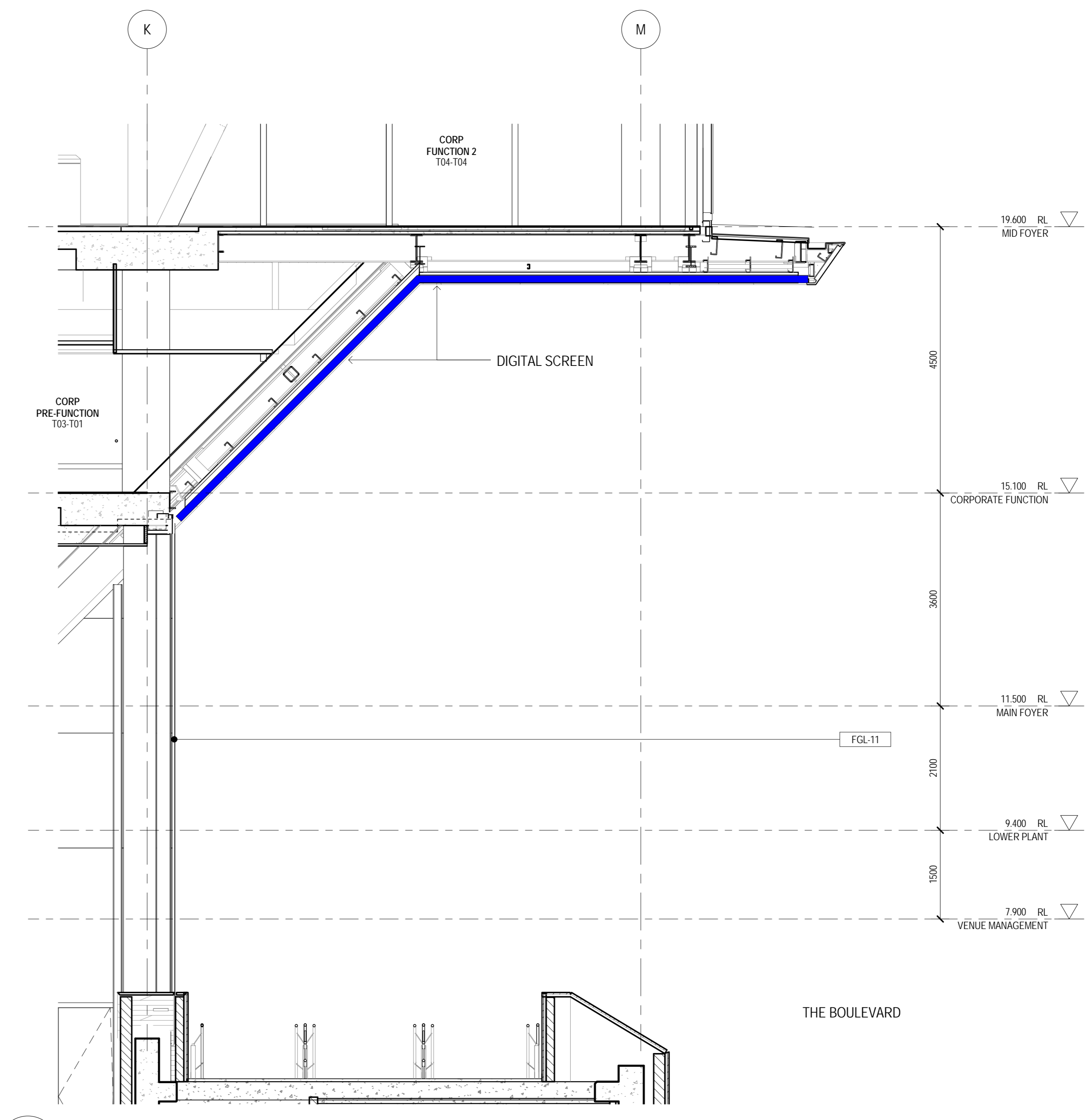
4 DIGITAL SIGN T01 ELEVATION 4



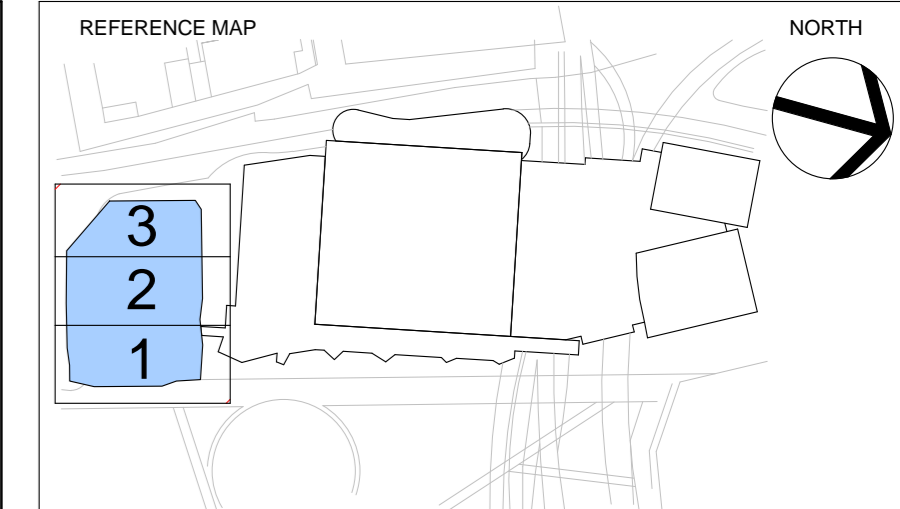
2 DIGITAL SIGN T01 ELEVATION 2



3 DIGITAL SIGN T01 ELEVATION 3



5 DIGITAL SIGN T01 FACADE SECTION

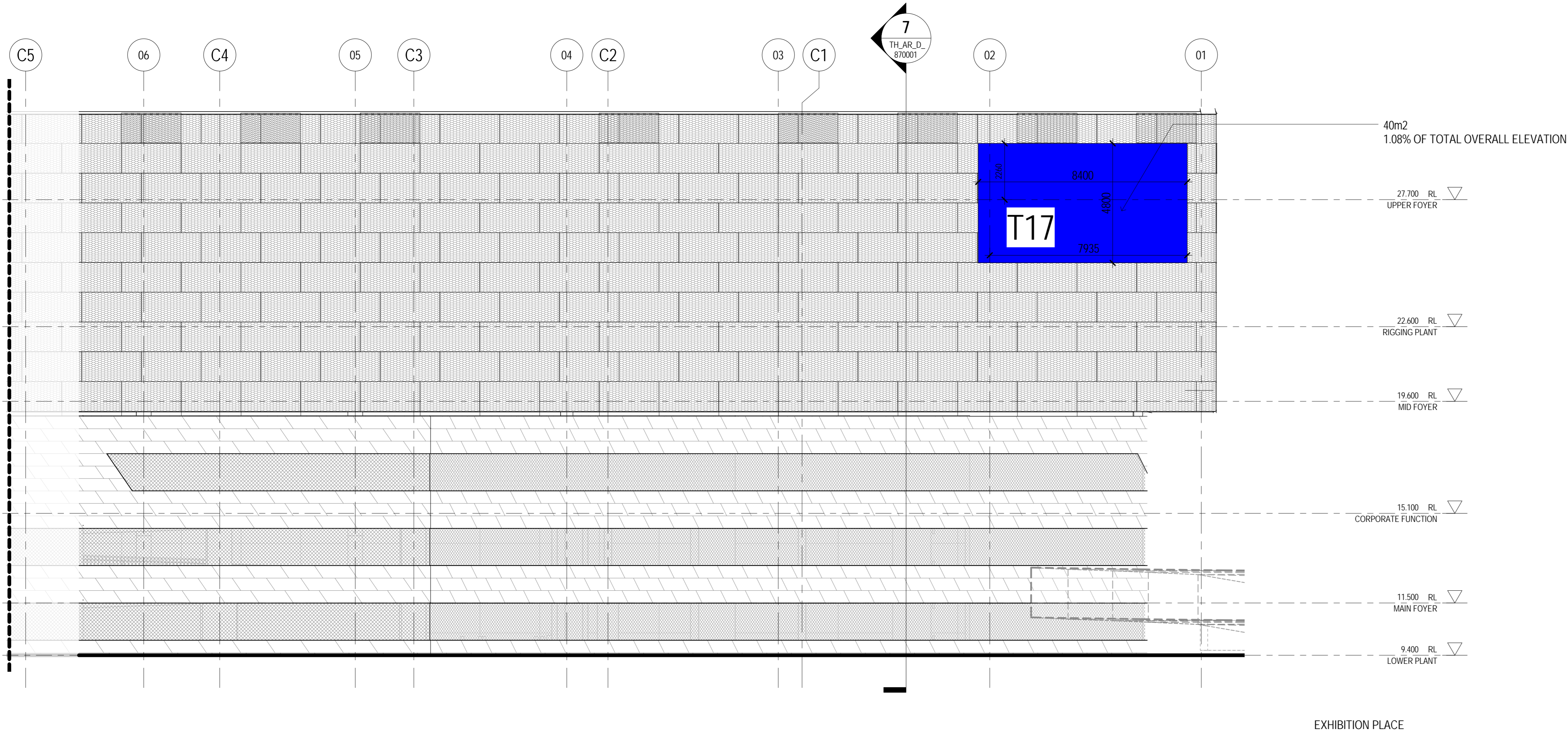


- NOTES
- DO NOT SCALE DRAWINGS. WRITTEN DIMENSIONS GOVERN.
  - ALL DIMENSIONS ARE IN MILLIMETRES UNLESS NOTED OTHERWISE.
  - ALL DIMENSIONS SHALL BE VERIFIED ON SITE BEFORE PROCEEDING WITH THE WORK. HASSELL+POPULOUS SHALL BE NOTIFIED IN WRITING OF ANY DISCREPANCIES.
  - THIS DRAWING MUST BE READ IN CONJUNCTION WITH ALL RELEVANT CONTRACTS, SPECIFICATIONS AND DRAWINGS.

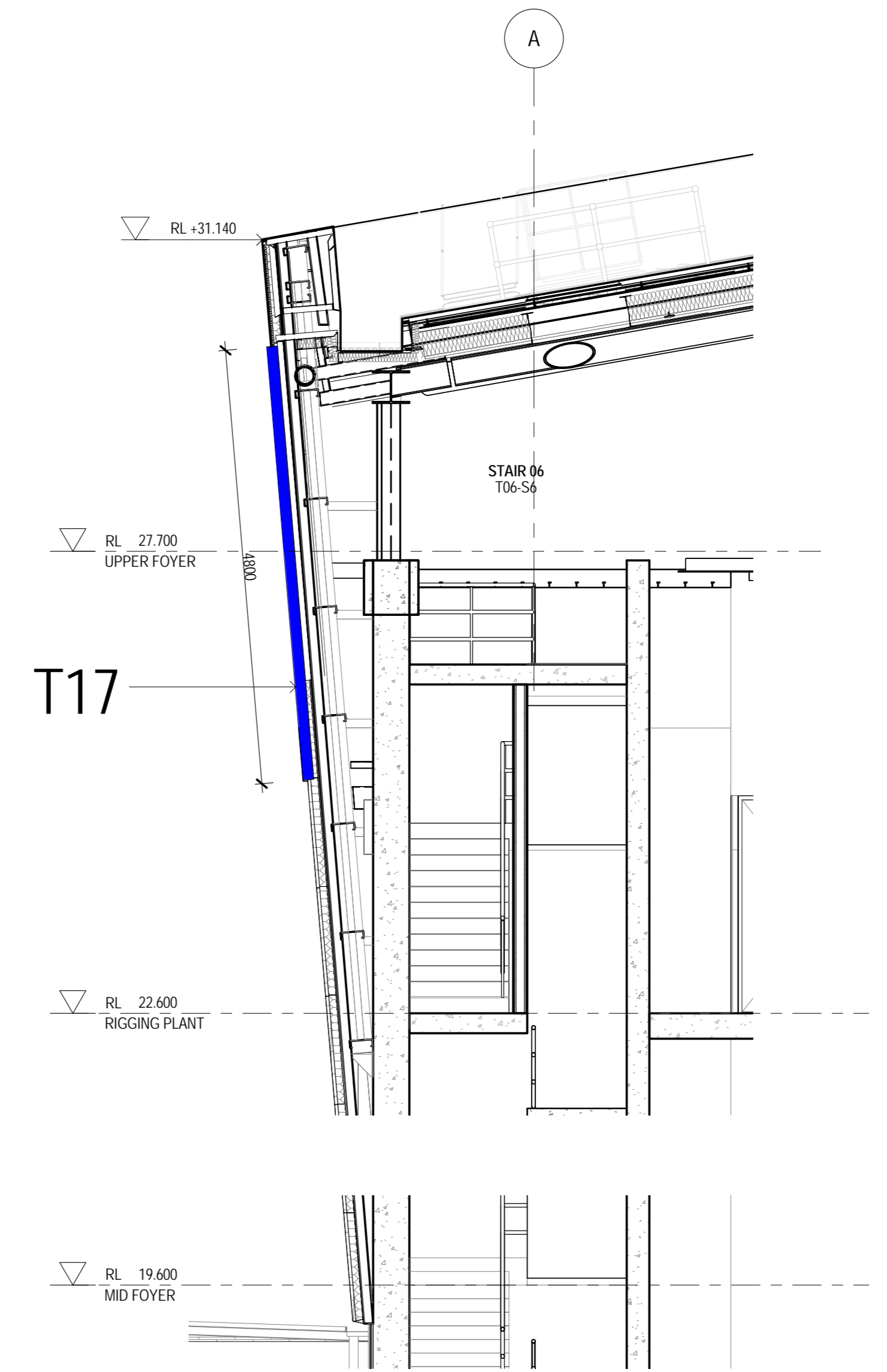
© COPYRIGHT OF THIS DRAWING IS VESTED IN HASSELL+POPULOUS. 2014 HASSELL+POPULOUS PTY LTD

THIS DRAWING IS AN UNCONTROLLED COPY, UNLESS NOTED OTHERWISE.

REV	DESCRIPTION	DATE
1	ISSUED FOR DEVELOPMENT APPLICATION	30.09.15
2	FOR INFORMATION	05.07.16



6 DIGITAL SIGN T17 WEST ELEVATION



7 DIGITAL SIGN T17 SECTION

ARCHITECT - PRINCIPAL DESIGN CONSULTANT

**HASSELL+POPULOUS**  
 HASSELL + POPULOUS PTY LTD ABN 346197017  
 LEVEL 2, PIER 8/9  
 23 HICKSON ROAD  
 SYDNEY NSW 2000 AUSTRALIA  
 T +61 2 9101 2000 F +61 2 9101 2100

- CONSULTANTS
- Robert Bird Group** STRUCTURAL SERVICES  
LEVEL 5, 9 CASTLEREAGH ST, SYDNEY NSW 2000 (02) 8246 3000
  - AECOM** BUILDING / ENVIRONMENTAL SERVICES  
LEVEL 21, 420 GEORGE ST, SYDNEY NSW 2000 (02) 8934 0000
  - C.J. ARMSTRONG** HYDRAULIC SERVICES  
LEVEL 2, 9/24 HICKSON RD, MILLERS POINT NSW 2000 (02) 8036 8370
  - Hyder** CIVIL / TRAFFIC SERVICES  
5/141 WALKER ST, NORTH SYDNEY NSW 2060 (02) 8907 8000

CLIENT

**Lend Lease**  
 LEND LEASE BUILDING PTY LTD  
 LEVEL 4, THE BOND, 30 HICKSON RD  
 MILLERS POINT, NSW 2000  
 (02) 9236 6111

PROJECT

**DARLING HARBOUR LIVE**  
**THE THEATRE**

DRAWING TITLE

**DIGITAL SIGN T01 AND T17**

STATUS

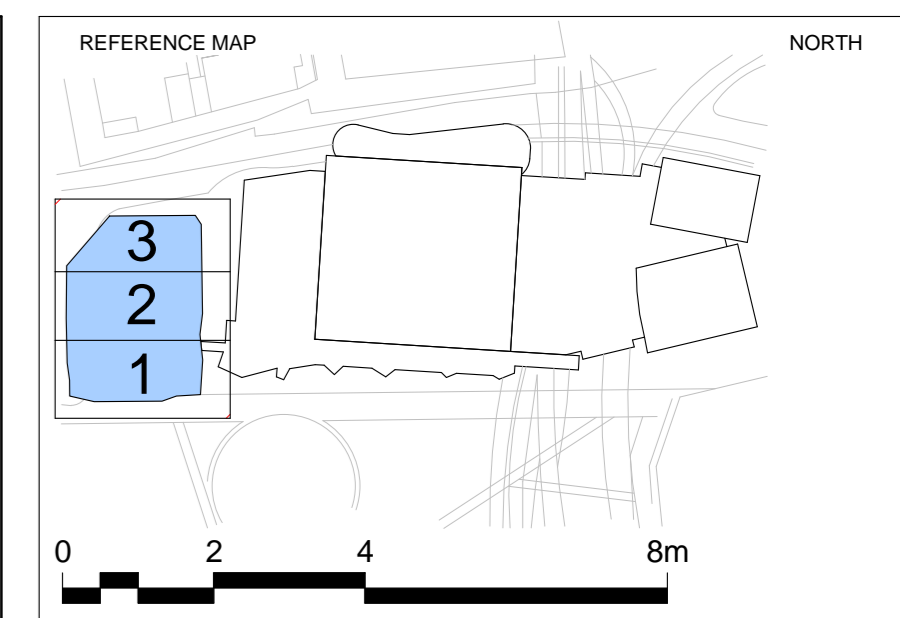
**DESIGN STAGE 2 - REVISION 2**

SCALE @ A0: 1/50L @ A2: DRAWN: CO-ORD: REVIEWED: APPROVED:

As indicated PB PB

PROJECT NUMBER: 003688 DRAWING NUMBER: TH\_AR\_D\_870001 REV: 2

C:\Users\populou\Documents\TH\_AR\_D\_870001.dwg

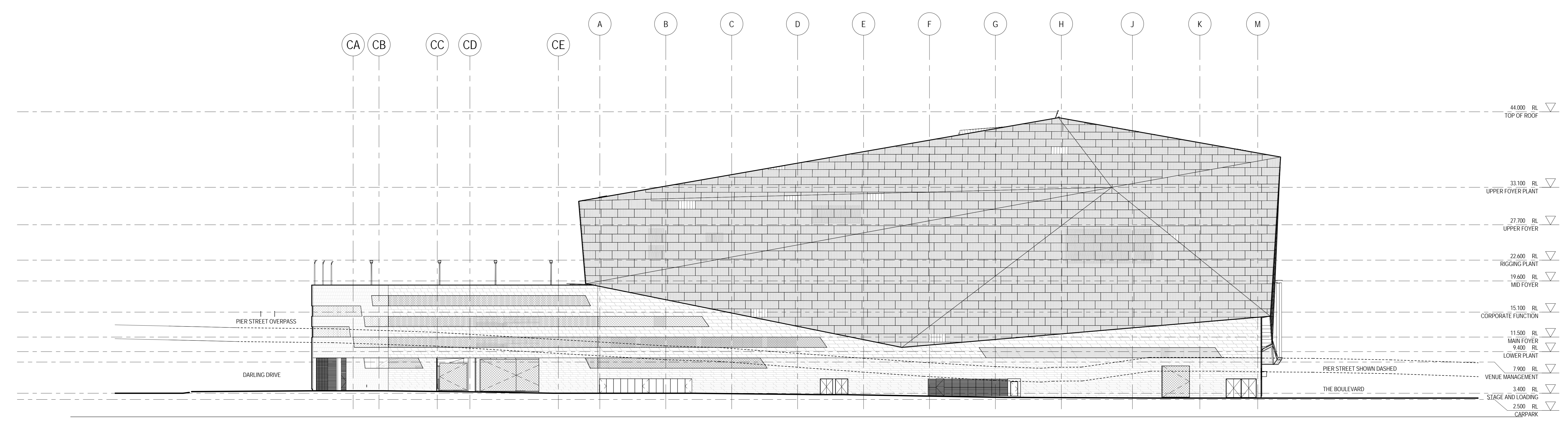


- NOTES
1. DO NOT SCALE DRAWINGS. WRITTEN DIMENSIONS GOVERN.
  2. ALL DIMENSIONS ARE IN MILLIMETRES UNLESS NOTED OTHERWISE.
  3. ALL DIMENSIONS SHALL BE VERIFIED ON SITE BEFORE PROCEEDING WITH THE WORK. HASSELL+POPULOUS SHALL BE NOTIFIED IN WRITING OF ANY DISCREPANCIES.
  4. THIS DRAWING MUST BE READ IN CONJUNCTION WITH ALL RELEVANT CONTRACTS, SPECIFICATIONS AND DRAWINGS.

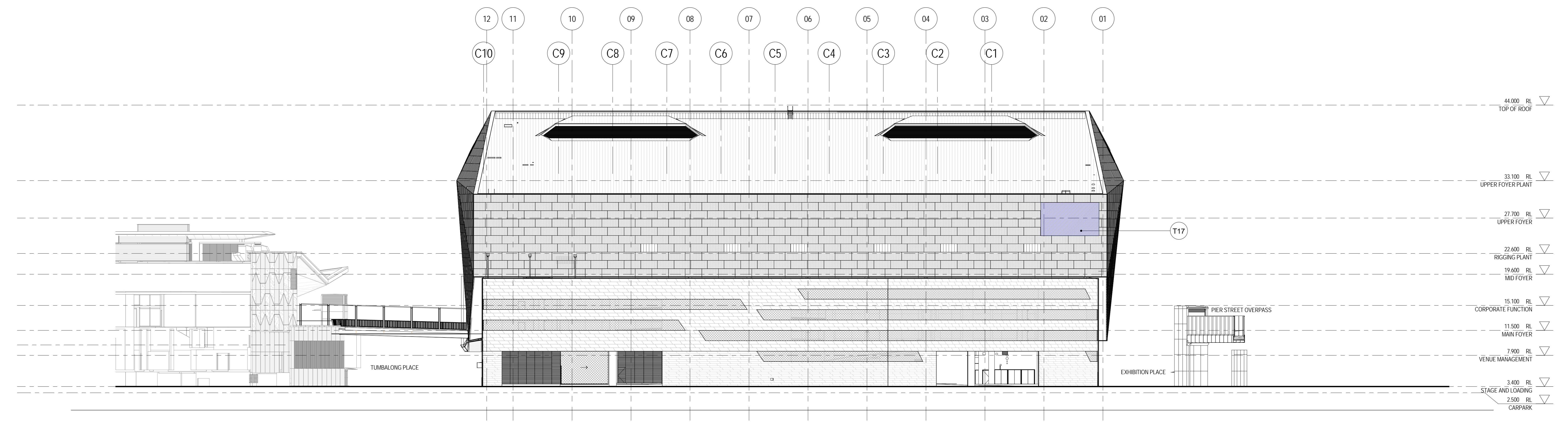
© COPYRIGHT OF THIS DRAWING IS VESTED IN HASSELL+POPULOUS. 2014 HASSELL+POPULOUS PTY LTD.

THIS DRAWING IS AN UNCONTROLLED COPY, UNLESS NOTED OTHERWISE.

REV	DESCRIPTION	DATE
1	ISSUED FOR DEVELOPMENT APPLICATION	30.09.15
2	FOR INFORMATION	05.07.16



1 DIGITAL SIGN SOUTH ELEVATION  
1:250



2 DIGITAL SIGN WEST ELEVATION  
1:250

ARCHITECT - PRINCIPAL DESIGN CONSULTANT  
**HASSELL+POPULOUS**  
HASSELL + POPULOUS PTY LTD ABN 346197017  
LEVEL 2, PIER B/P  
23 HICKSON ROAD  
SYDNEY NSW 2000 AUSTRALIA  
T +61 2 9101 2000 F +61 2 9101 2100

- CONSULTANTS
- STRUCTURAL SERVICES**  
LEVEL 5, 9 CASTLEREAGH ST, SYDNEY  
NSW 2000  
(02) 8246 3000
  - BUILDING / ENVIRONMENTAL SERVICES**  
LEVEL 2, 450 GEORGE ST, SYDNEY  
NSW 2000  
(02) 9334 0000
  - HYDRAULIC SERVICES**  
LEVEL 2, 9/24 HICKSON RD, MILLERS POINT  
NSW 2000  
(02) 8036 8370
  - CIVIL / TRAFFIC SERVICES**  
5/141 WALKER ST, NORTH SYDNEY  
NSW 2060  
(02) 8907 9000

CLIENT  
**Lend Lease**  
LEND LEASE BUILDING PTY LTD  
LEVEL 4, THE BOND, 20 HICKSON RD  
MILLERS POINT, NSW 2000  
(02) 9236 6111

PROJECT  
**DARLING HARBOUR LIVE  
THE THEATRE**

DRAWING TITLE  
**DIGITAL SIGN  
SOUTH - WEST ELEVATIONS**

STATUS

**DESIGN STAGE 2 - REVISION 2**

SCALE @ A0: 1/50% @ A2: DRAWN: COLOUR: REVIEWED: APPROVED:

PROJECT NUMBER: 003688 DRAWING NUMBER: TH\_AR\_D\_870011 REV: 2

FOR INFORMATION

C:\Users\populou\Documents\TH\_AR\_D\_870011.dwg

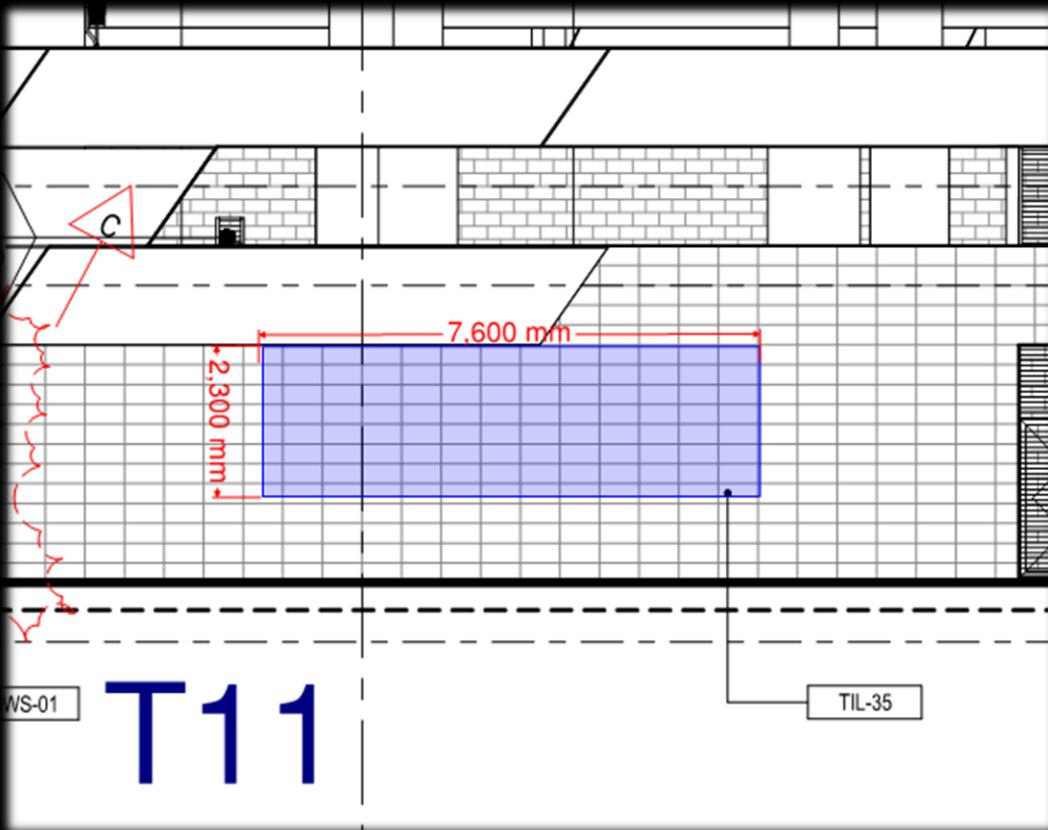
# The Theatre

## T11-B – OMR Signage & Live Sites



# The Theatre

## T11A/B – OMR Signage & Live Sites



- LIVE SITE AND EVENT INFORMATION, DAY AND NIGHT VIDEO WITH AUDIO CAPABILITY. NAMING RIGHTS AND EVENT/PRECINCT INFORMATION
- AUTO BRIGHTNESS ADJUST BASED ON CURRENT ENVIRONMENT
- GALVANIZED AND PAINTED FRAME
- SCREEN SURFACE TO SIT FLUSH WITH FAÇADE
- WILL INCLUDE LOCAL AUDIO

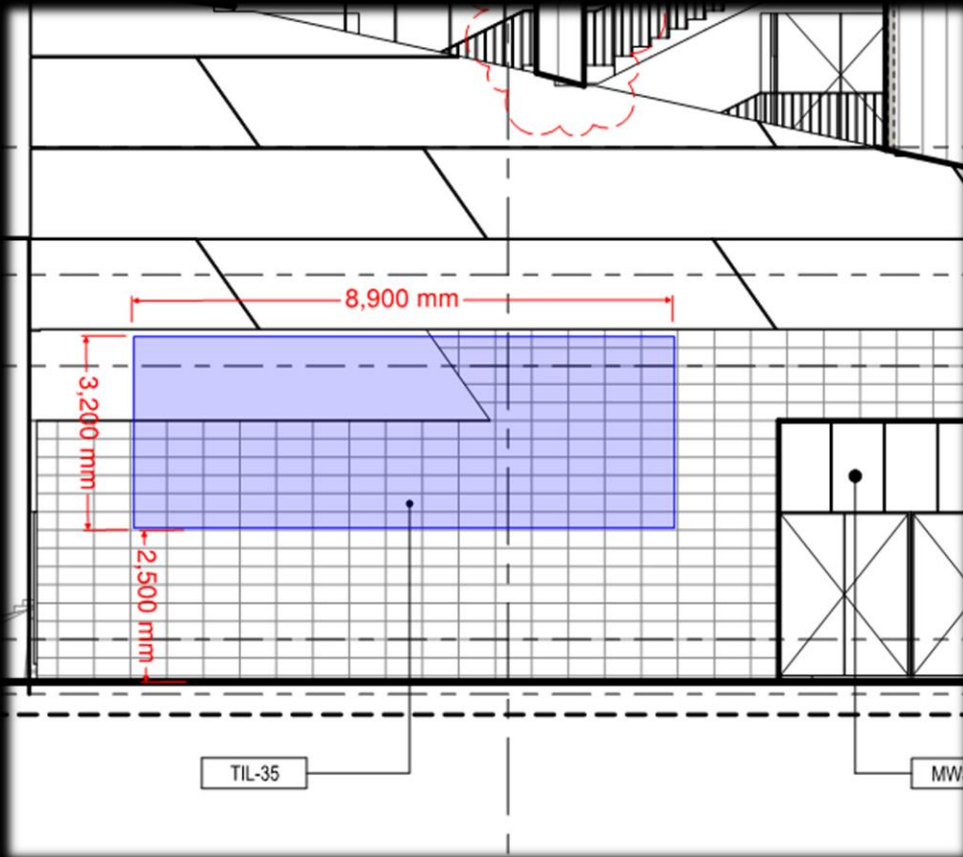
# The Theatre

## T12 - Naming rights and event/precinct information



# The Theatre

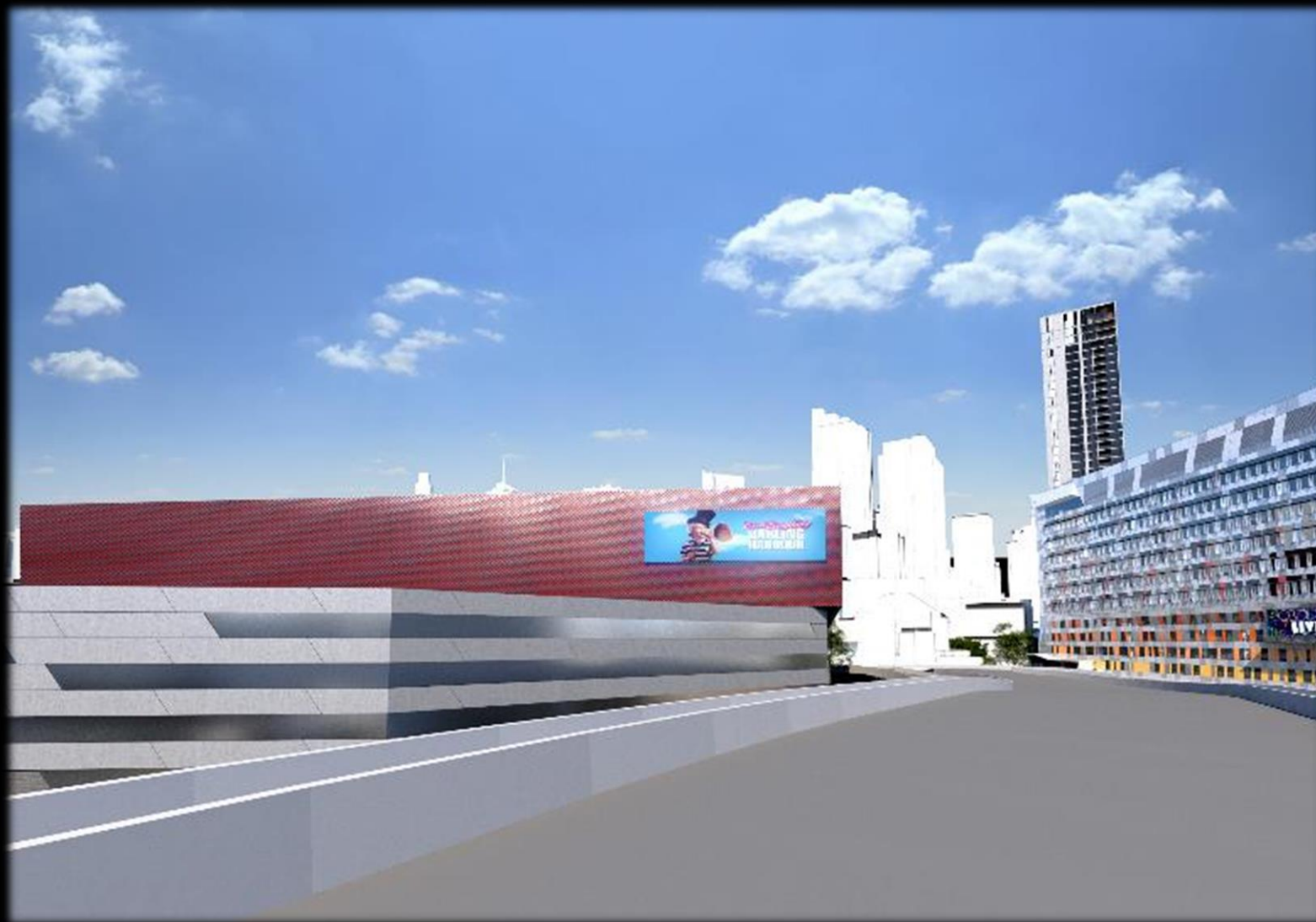
## T12 - Naming rights and event/precinct information



- LIVE SITE AND EVENT INFORMATION, DAY AND NIGHT VIDEO WITH AUDIO CAPABILITY. NAMING RIGHTS AND EVENT/PRECINCT INFORMATION
- AUTO BRIGHTNESS ADJUST BASED ON CURRENT ENVIRONMENT
- GALVANIZED AND PAINTED FRAME
- SCREEN SURFACE TO SIT FLUSH WITH FAÇADE
- WILL INCLUDE LOCAL AUDIO

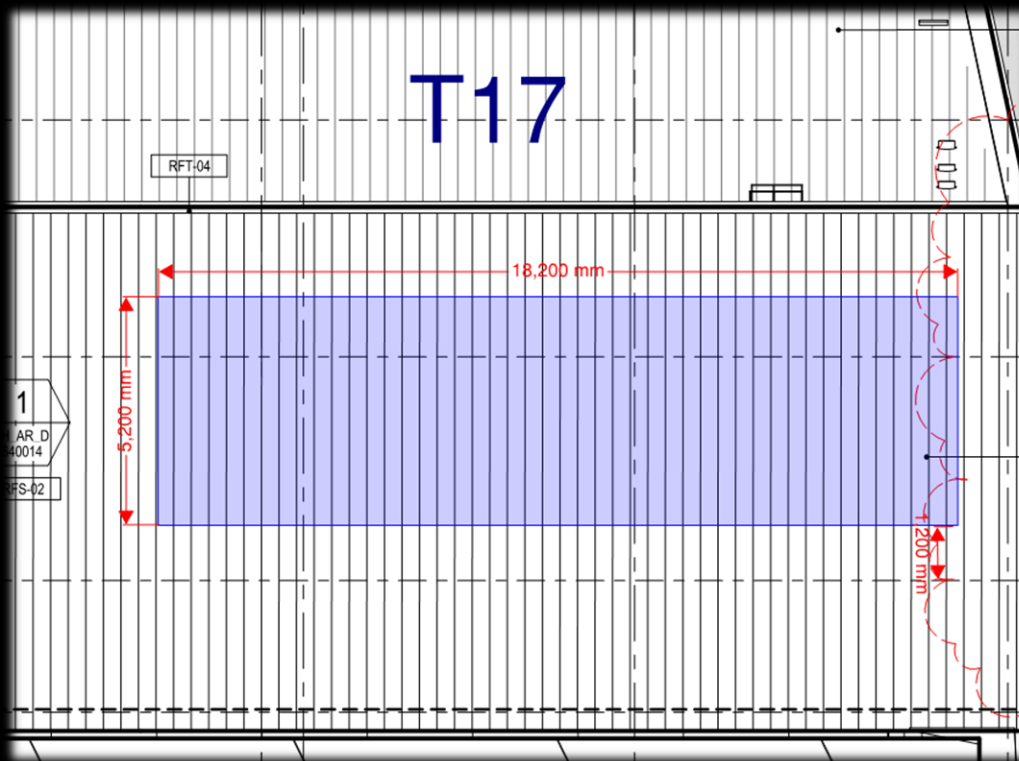
# The Theatre

## T-17 Naming rights and event/precinct information



# The Theatre

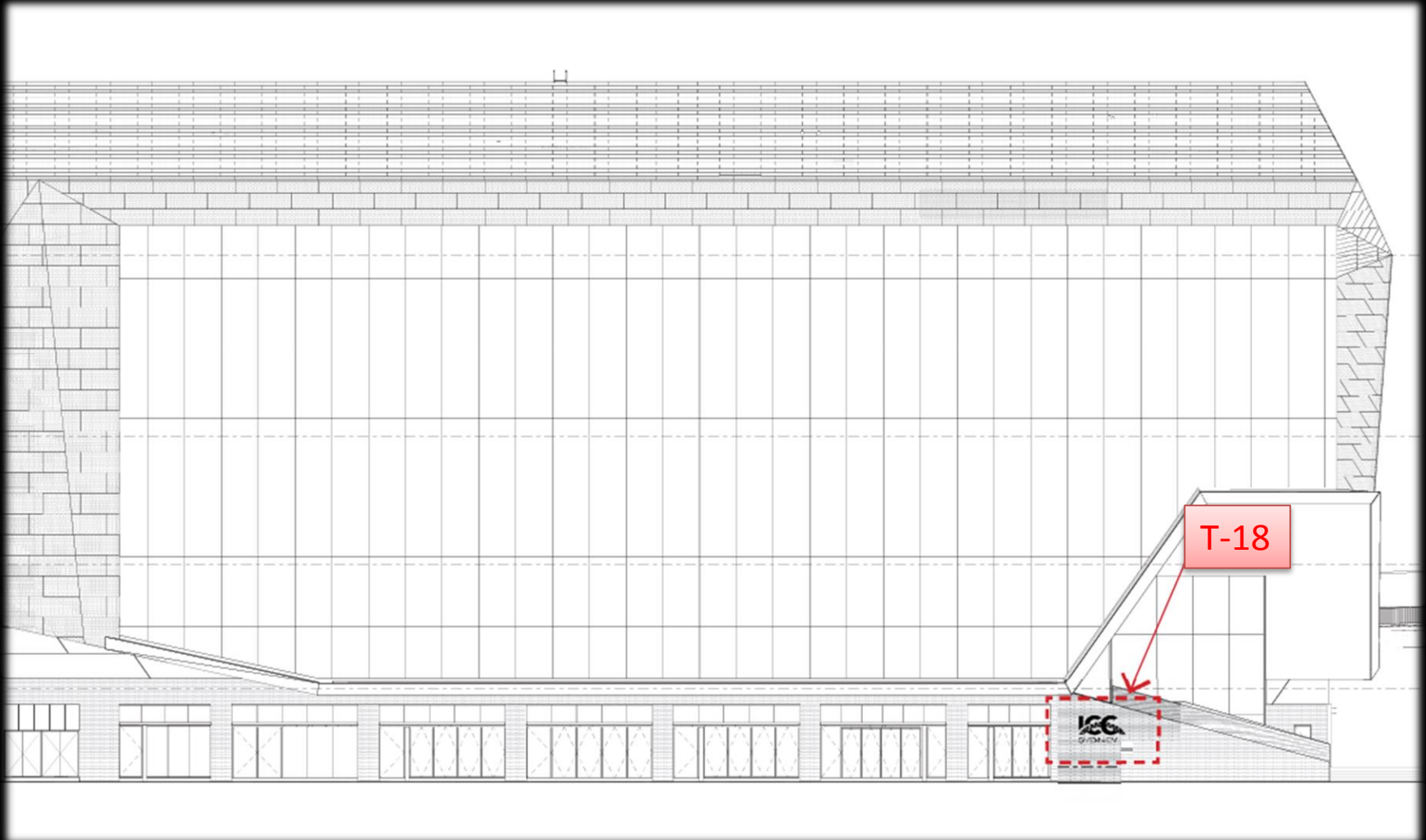
## T-17 Naming rights and event/precinct information



- DAY/NIGHT STATIC SCREEN IMAGE FOR NAMING RIGHTS & VENUE INFORMATION
- AUTO BRIGHTNESS ADJUST BASED ON CURRENT ENVIRONMENT
- GALVANIZED AND PAINTED FRAME
- SCREEN SURFACE TO SIT FLUSH WITH FAÇADE
- NO AUDIO

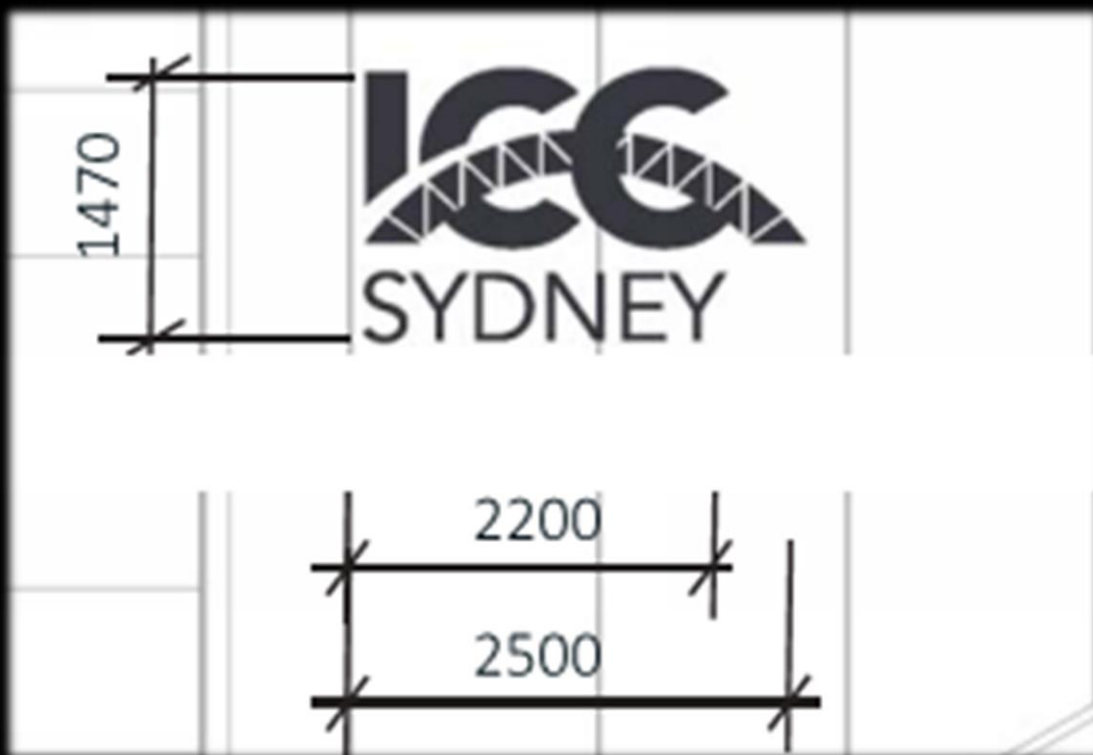
# The Theatre

## T-18 Building Identification



# The Theatre

## T-18 Building Identification



- 6MM BLACK STAINLESS STEEL LETTERING AND MATCHING FIXING
- ALL LETTERS INDIVIDUALLY PINNED TO SOLID SUBSTRATE
- ALL LOGO & LETTERS TO BE INDIVIDUALLY BACK LIT

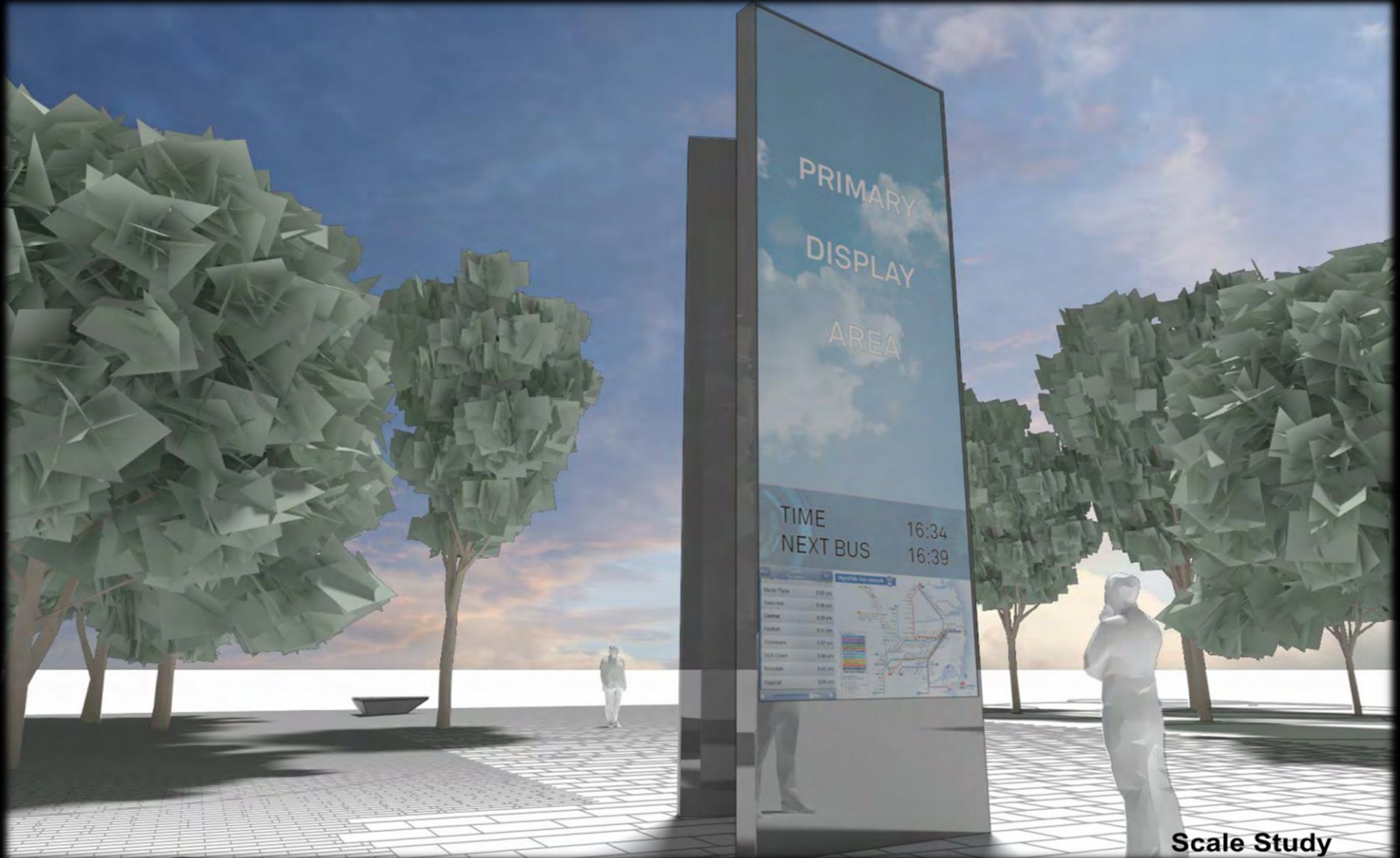
# Public Realm



# Public Realm Blade Sign

P1,4

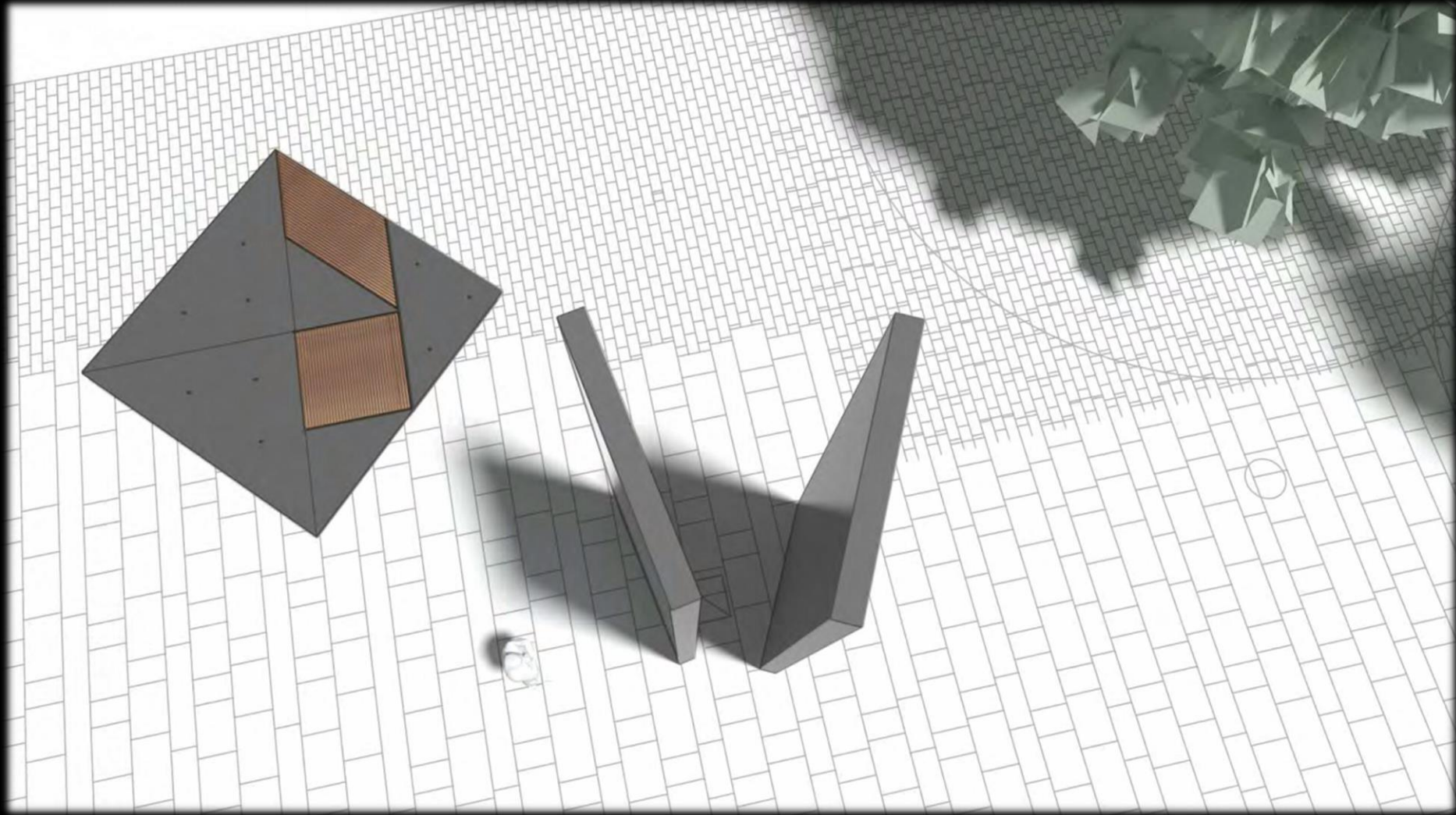
(Indicative Look and Feel)



# Public Realm Blade Sign

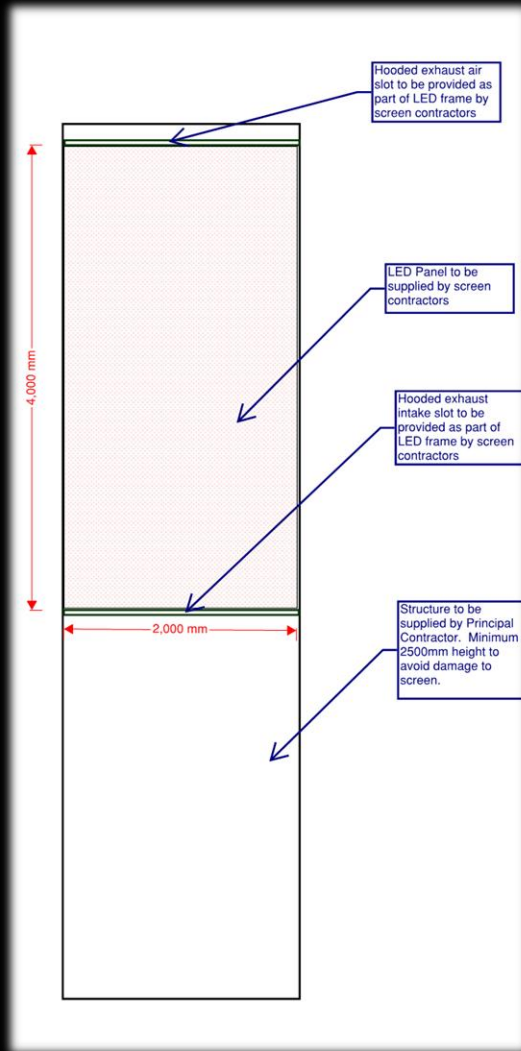
P1,4

(Indicative Look and Feel)



# Public Realm Blade Sign

P1,4

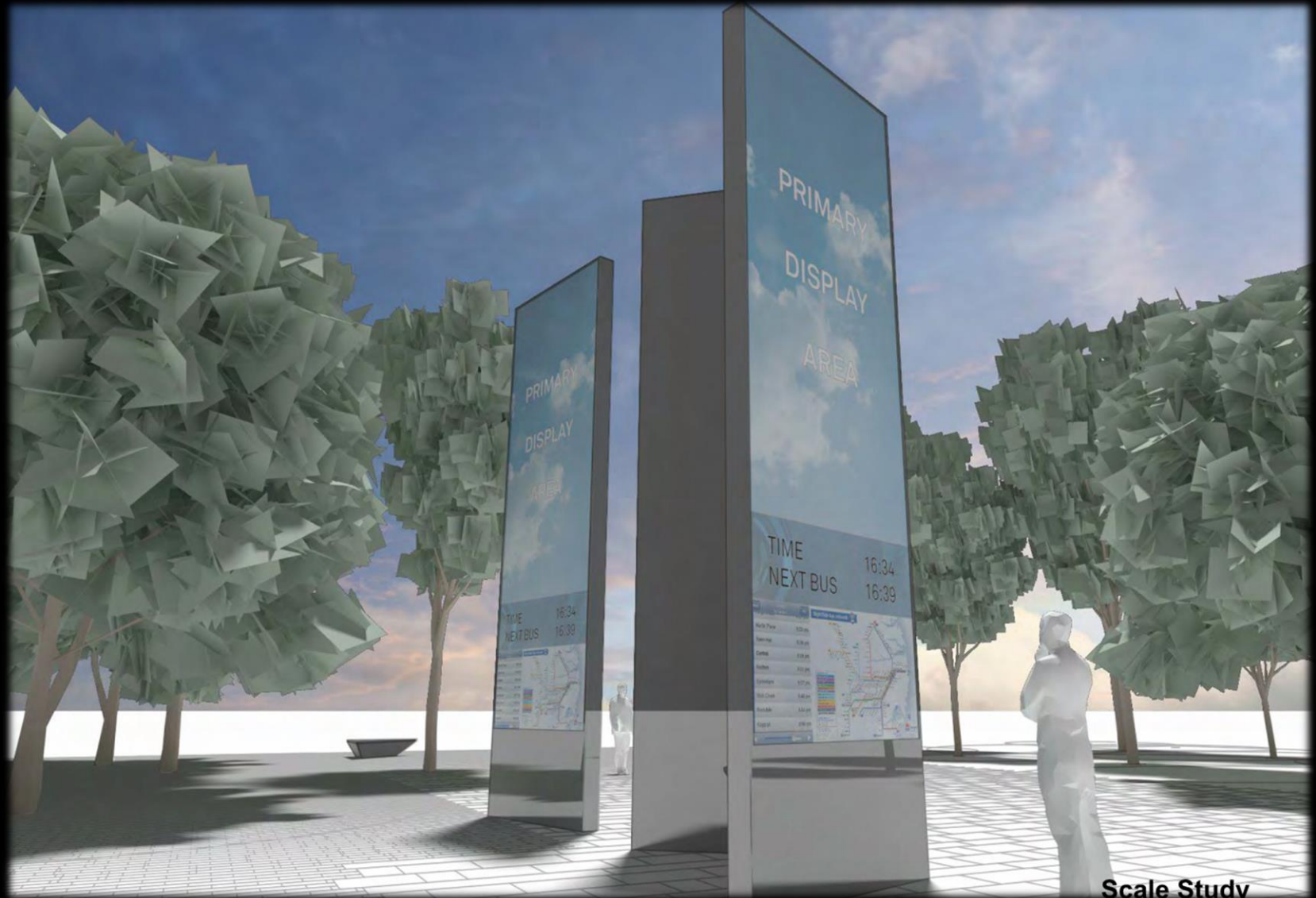


- DYNAMIC DAY/NIGHT CLUSTER OF 2 SINGLE SIDED BLADE LED SCREENS
- AUTO BRIGHTNESS ADJUST BASED ON CURRENT ENVIRONMENT
- GALVANIZED AND PAINTED FRAME MOUNTED TO ARCHITECT DESIGNED STRUCTURE
- SEAMLESS EDGE BLENDING BETWEEN FACES
- WILL INCLUDE LOCAL AUDIO

# Public Realm Blade Sign

P2,3,5

(Indicative Look and Feel)

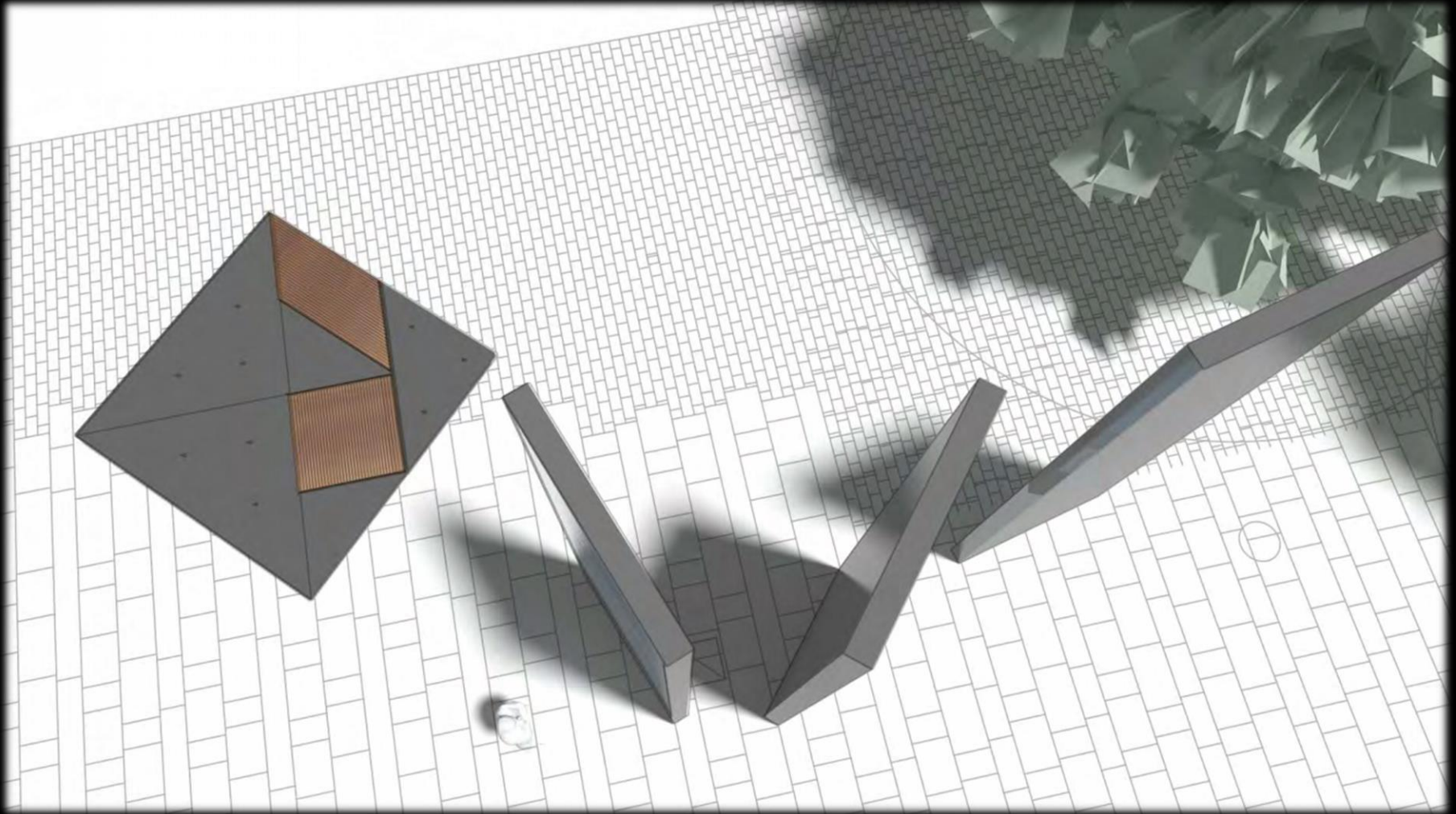


Scale Study

# Public Realm Blade Sign

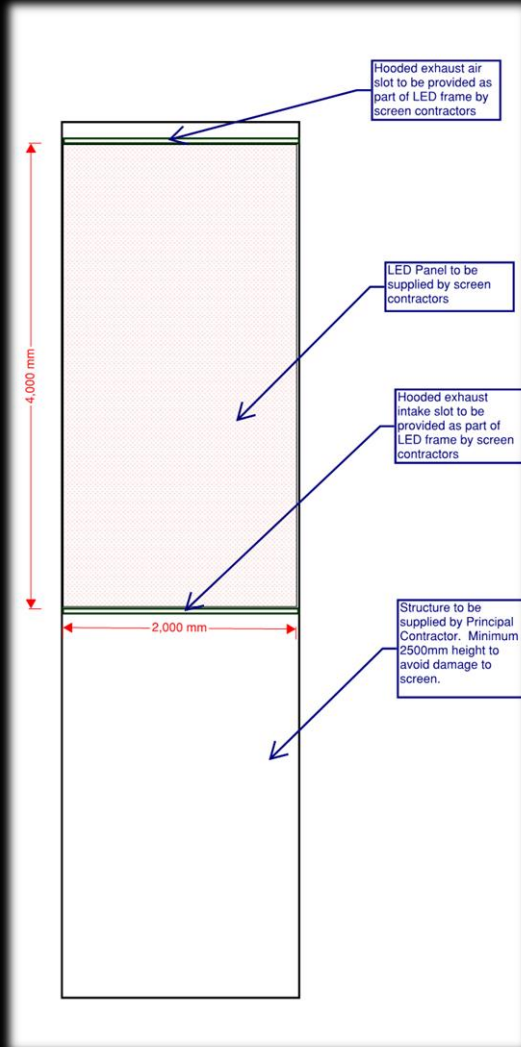
P2,3,5

(Indicative Look and Feel)



# Public Realm Blade Sign

P2,3,5



- DYNAMIC DAY/NIGHT CLUSTER OF 3 SINGLE SIDED BLADE LED SCREENS
- LED SCREEN
- AUTO BRIGHTNESS ADJUST BASED ON CURRENT ENVIRONMENT
- GALVANIZED AND PAINTED FRAME MOUNTED TO ARCHITECT DESIGNED STRUCTURE
- SEAMLESS EDGE BLENDING BETWEEN FACES
- WILL INCLUDE LOCAL AUDIO

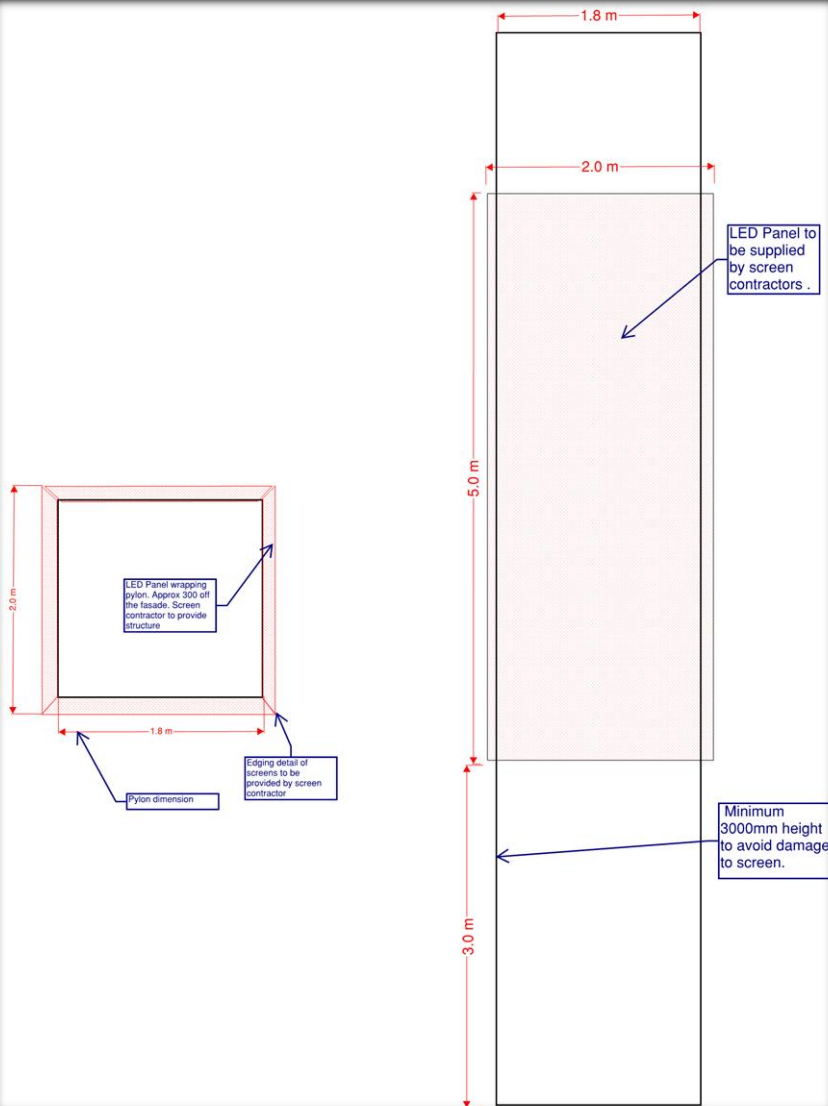
# Public Realm Pillar Wrap

PW01-03



# Public Realm Pillar Wrap

PW01-03



- DYNAMIC DAY/NIGHT 3 & 4 SIDED PILLAR WRAP LED SCREEN
- AUTO BRIGHTNESS ADJUST BASED ON CURRENT ENVIRONMENT
- GALVANIZED AND PAINTED FRAME
- SEAMLESS EDGE BLENDING BETWEEN FACES
- NO AUDIO