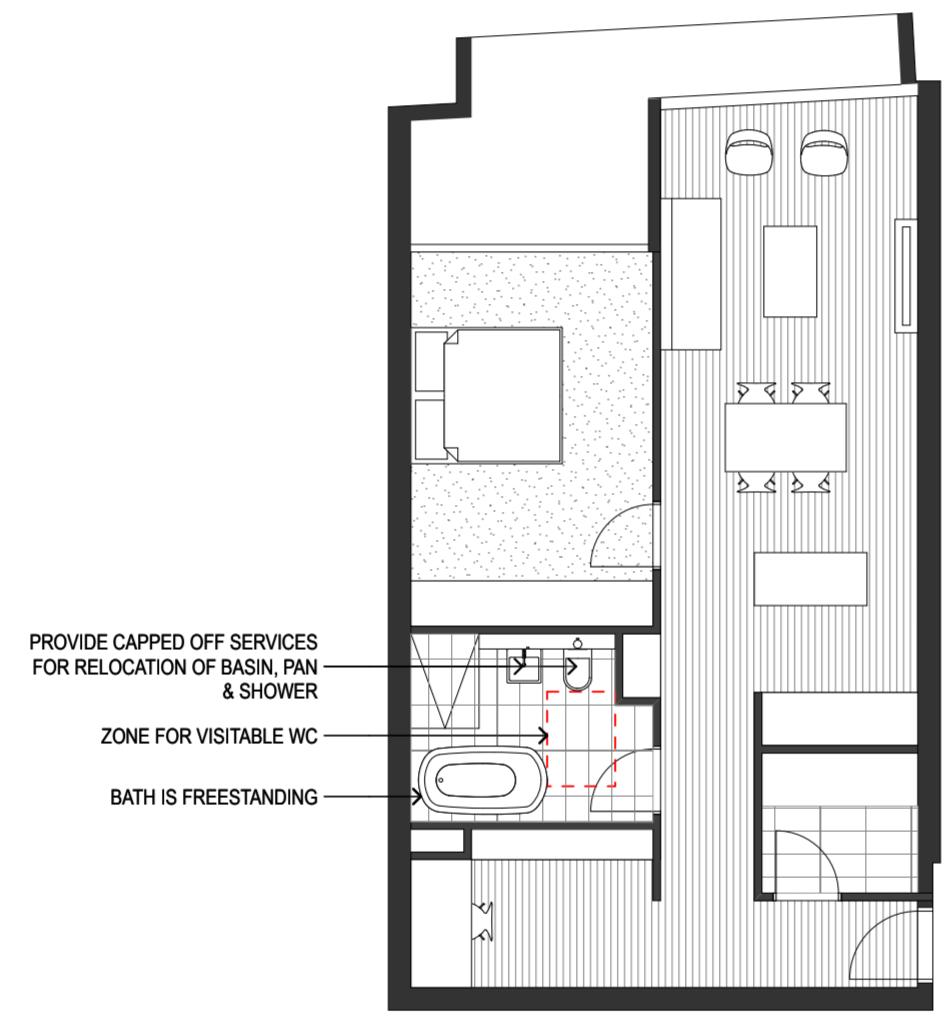


GENERAL NOTES
 ALL DIMENSIONS AND EXISTING CONDITIONS SHALL BE CHECKED AND VERIFIED BY THE CONTRACTOR BEFORE PROCEEDING WITH THE WORK
 ALL LEVELS RELATIVE TO 'AUSTRALIAN HEIGHT DATUM'
 DO NOT SCALE DRAWINGS. USE FIGURED DIMENSIONS ONLY

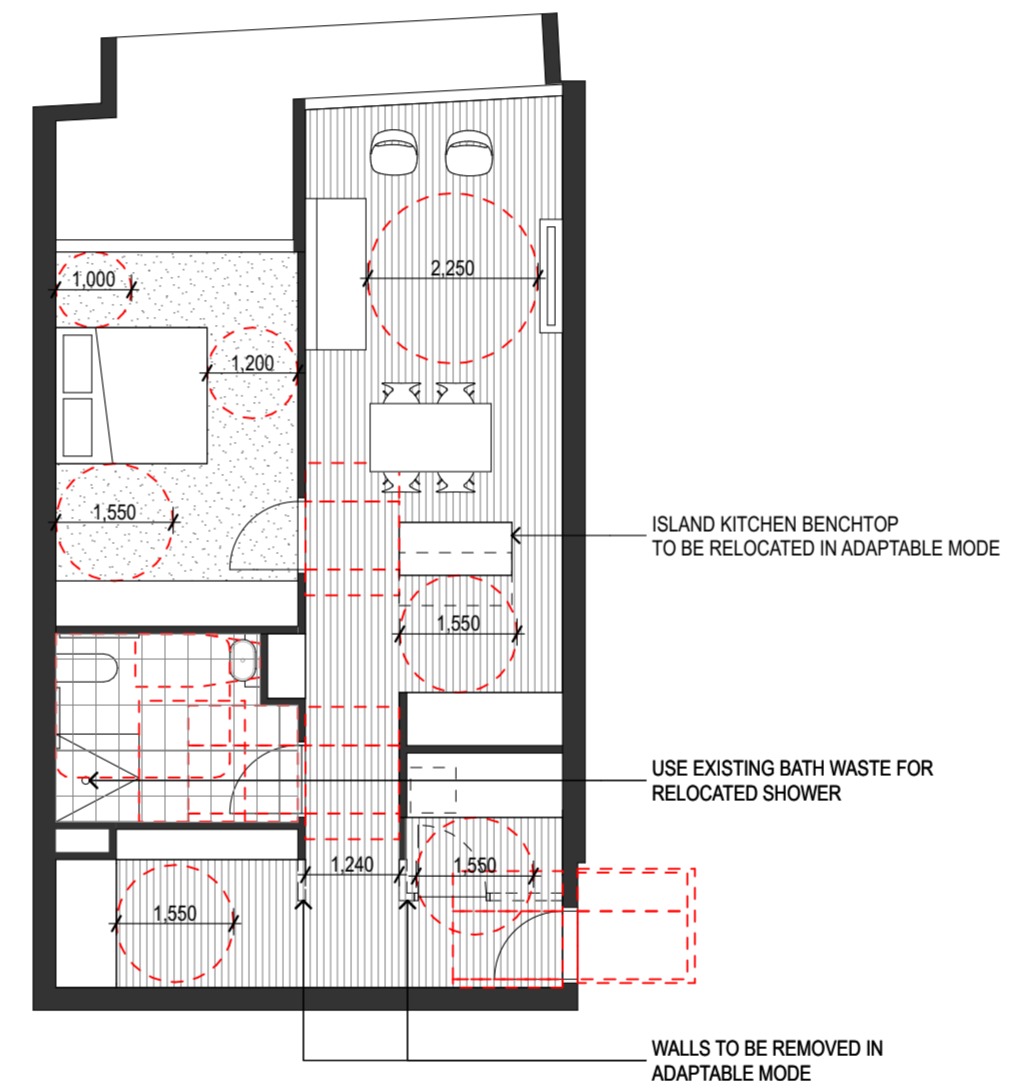
LEGEND

1 BED
2 BED 2 BATH
3 BED
TOWNHOUSE
LOBBY
COMMERCIAL
LIVE/ WORK
RETAIL

- Adaptable Apartment
- Cross Ventilation Path
- Solar Compliant Apartment
- Solar Compliant Balcony
- AL1** Powdercoated Aluminium Panel 1
- AL2** Powdercoated Aluminium Panel 2
- ALP** Aluminium Composite Panel
- BAL1** Glazed Balustrade 1
- BAL2** Glazed Balustrade 2
- BAL3** Aluminium Plate Balustrade
- BYRK1** Bicycle Rack
- GL1** Aluminium Framed Retail Glazing
- GL2** Performance Glazed Aluminium Framed Sliding Door
- GL3** Glazing With White Interlay & Integrated Venetians
- LV1** Sandstone Louvre
- PAV1** Paving 1
- PC1** Precast Concrete 1
- SC1** Perforated Screen
- SC2** Integrated Screen
- SC3** Louvred Screen
- SS1** Sandstone 1
- SS2** Sandstone 2
- TC1** Terracotta Cladding 1
- TC2** Terracotta Cladding 2
- TC3** Terracotta Cladding 3
- TIM** Timber Composite Panel



1 PLAN Pre Adaptable
1:100



2 PLAN Post Adaptable
1:100

BATHROOM WALLS TO BE REINFORCED TO COMPLY WITH AS 4299 CLASS C

ENTRY DOOR EXTERNAL CIRCULATION TO COMPLY WITH AS 1428.2

REVISION	DATE	DESCRIPTION	BY
05	1/02/2016	Issue for DA	CHS
04	12/01/2016	For Coordination	CHS
03	8/12/2015	For Coordination	CHS
02	25/11/2015	For Coordination	CHS
01	11/11/2015	For Coordination	CHS

fjmt
francis-jones morehen thorp

SYDNEY
Level 5, 70 King Street
Sydney NSW 2000 Australia
T +61 2 9251 7077
F +61 2 9251 7072
E fjmt@fjmt.com.au
W www.fjmt.com.au

NOMINATED ARCHITECT: RICHARD FRANCIS-JONES (REG NO 5301)

PROJECT

**85 Harrington Street
The Rocks
GOLDEN AGE & HANNAS THE ROCKS**

TITLE

**Plans
Adaptable Layout - 1 Bedroom**

SCALE	1:200 @ A2	PROJECT CODE	GA85H
DATE	11/11/2015	REVISION	05
SHEET NO.	DA-2020		

For Information