

GENERAL NOTES
 ALL DIMENSIONS AND EXISTING CONDITIONS SHALL BE CHECKED AND VERIFIED BY THE CONTRACTOR BEFORE PROCEEDING WITH THE WORK
 ALL LEVELS RELATIVE TO 'AUSTRALIAN HEIGHT DATUM'
 DO NOT SCALE DRAWINGS. USE FIGURED DIMENSIONS ONLY

LEGEND

1 BED
2 BED 2 BATH
3 BED
TOWNHOUSE
LOBBY
COMMERCIAL
LIVE/ WORK
RETAIL

- Adaptable Apartment
- Cross Ventilation Path
- Solar Compliant Apartment
- Solar Compliant Balcony

- AL1 Powdercoated Aluminium Panel 1
- AL2 Powdercoated Aluminium Panel 2
- ALP Aluminium Composite Panel
- BAL1 Glazed Balustrade 1
- BAL2 Glazed Balustrade 2
- BAL3 Aluminium Plate Balustrade
- BYRK1 Bicycle Rack
- GL1 Aluminium Framed Retail Glazing
- GL2 Performance Glazed Aluminium Framed Sliding Door
- GL3 Glazing With White Interlay & Integrated Venetians
- LV1 Sandstone Louvre
- PAV1 Paving 1
- PC1 Precast Concrete 1
- SC1 Perforated Screen
- SC2 Integrated Screen
- SC3 Louvred Screen
- SS1 Sandstone 1
- SS2 Sandstone 2
- TC1 Terracotta Cladding 1
- TC2 Terracotta Cladding 2
- TC3 Terracotta Cladding 3
- TIM Timber Composite Panel

05	1/02/2016	Issue for DA	CHS
04	12/01/2016	For Coordination	CHS
03	8/12/2015	For Coordination	CHS
02	25/11/2015	For Coordination	CHS
01	11/11/2015	For Coordination	CHS

REVISION	DATE	DESCRIPTION	BY
----------	------	-------------	----

fjmt
 francis-jones morehen thorp

SYDNEY
 Level 5, 70 King Street
 Sydney NSW 2000 Australia
 T +61 2 9251 7077
 F +61 2 9251 7072
 E fjmt@fjmt.com.au
 W www.fjmt.com.au

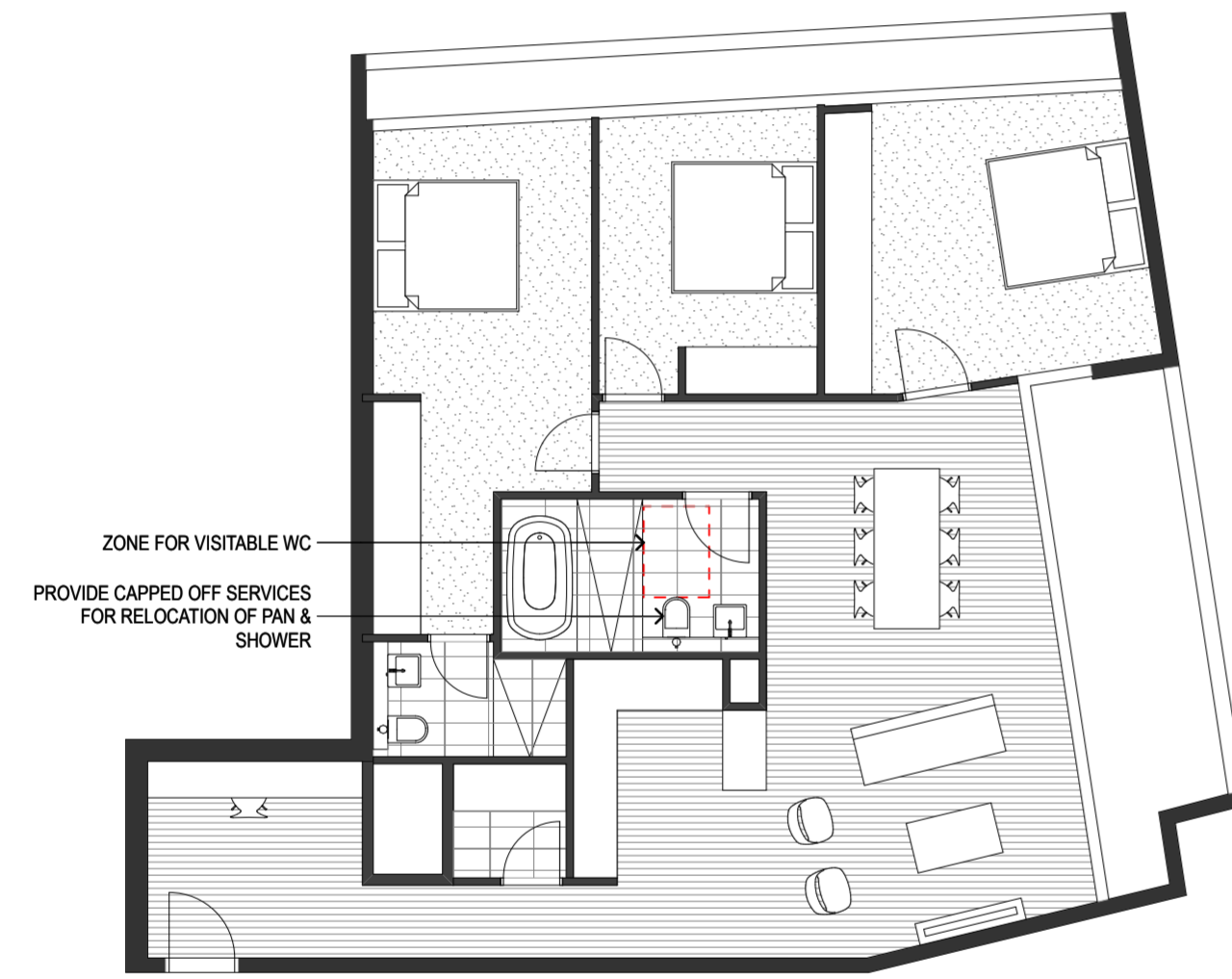
NOMINATED ARCHITECT: RICHARD FRANCIS-JONES (REG NO 5301)

PROJECT
85 Harrington Street
The Rocks
GOLDEN AGE & HANNAS THE ROCKS

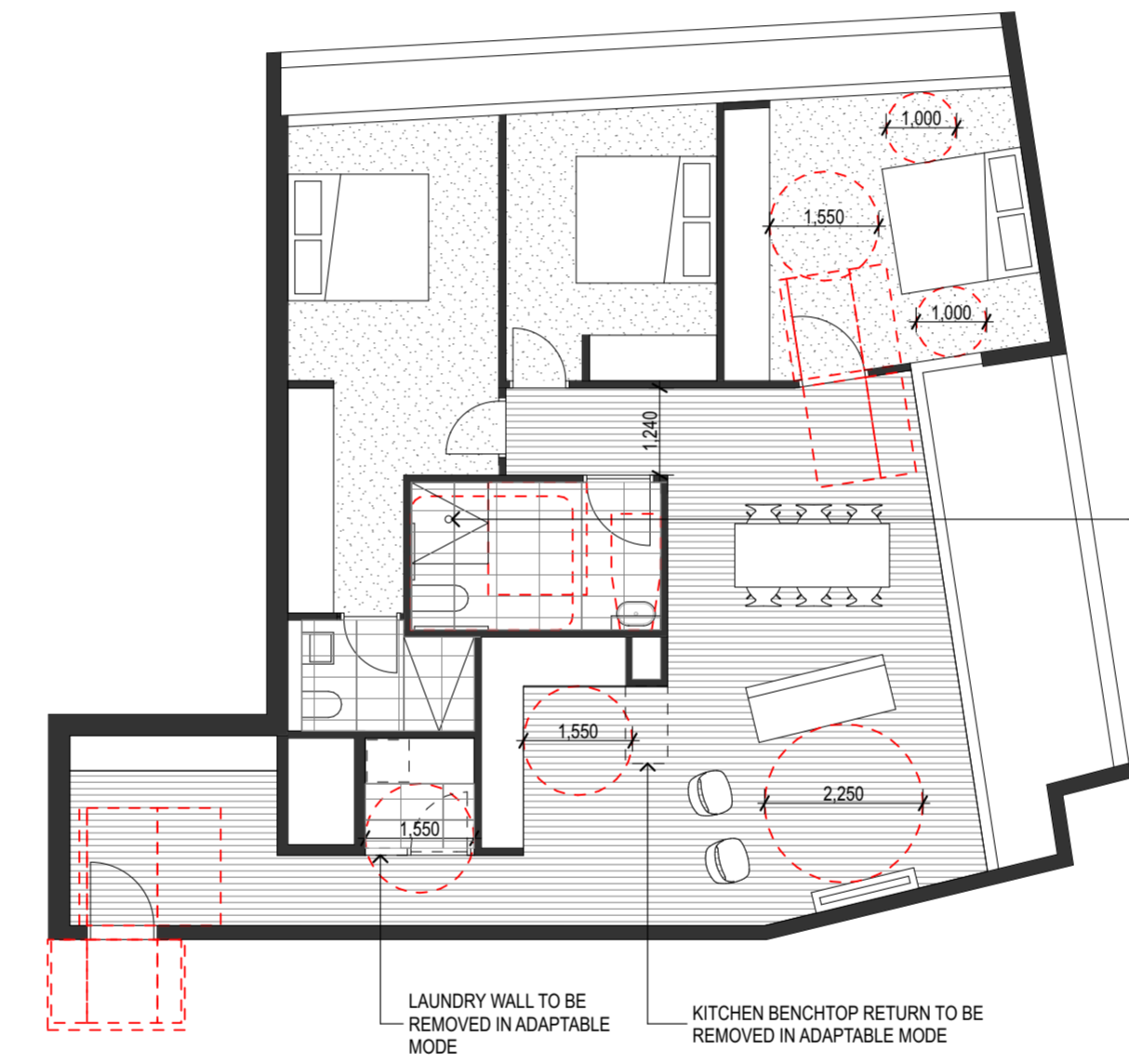
TITLE
Plans
Adaptable Layout - 3 Bedroom

SCALE	1:200 @ A2	PROJECT CODE	GA85H
DATE	11/11/2015	REVISION	05
SHEET NO.	DA-2022		

For Information



1 PLAN Pre Adaptable
1:100



2 PLAN Post Adaptable
1:100

BATHROOM WALLS TO BE REINFORCED TO COMPLY WITH AS 4299 CLASS C

ENTRY DOOR EXTERNAL CIRCULATION TO COMPLY WITH AS 1428.2