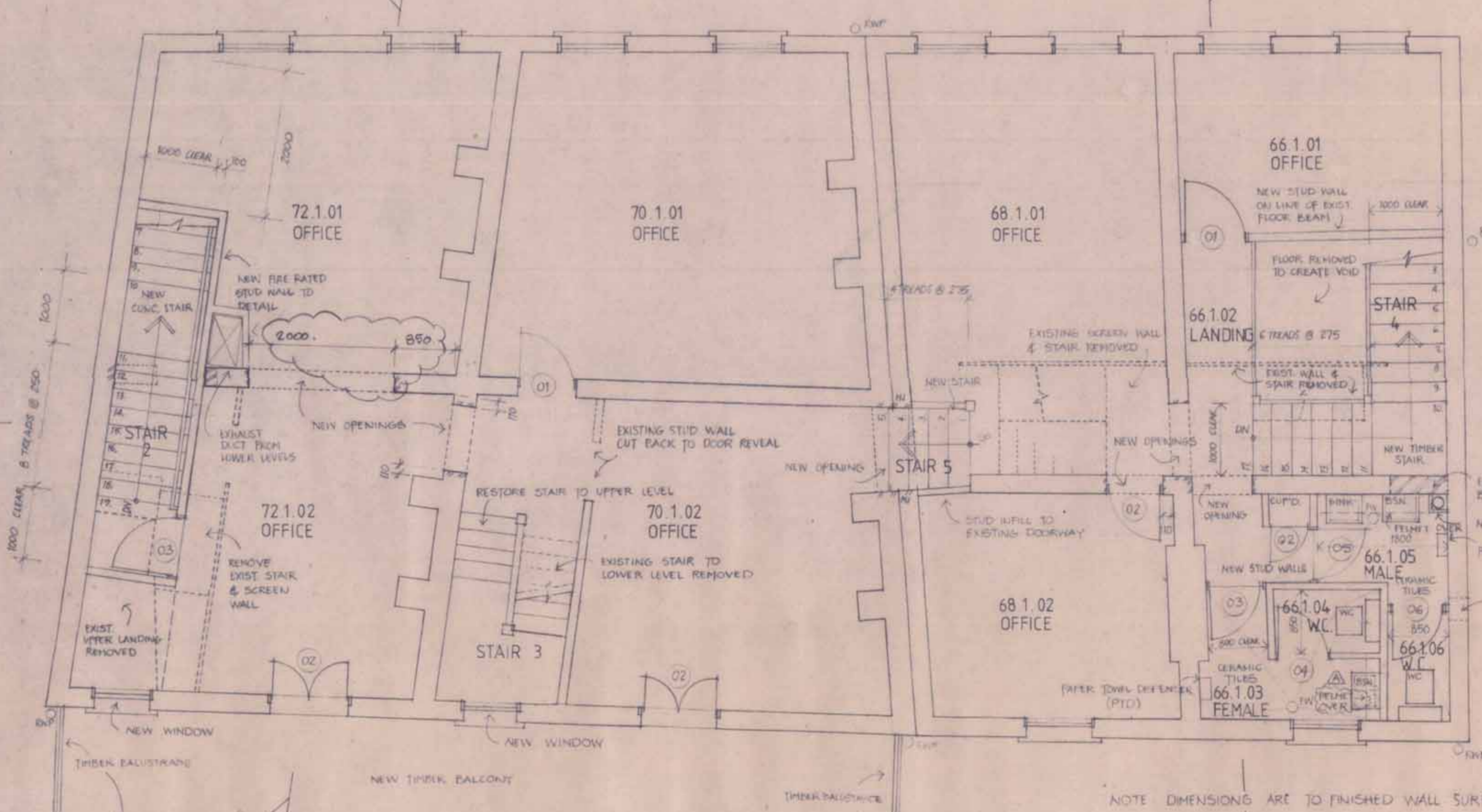
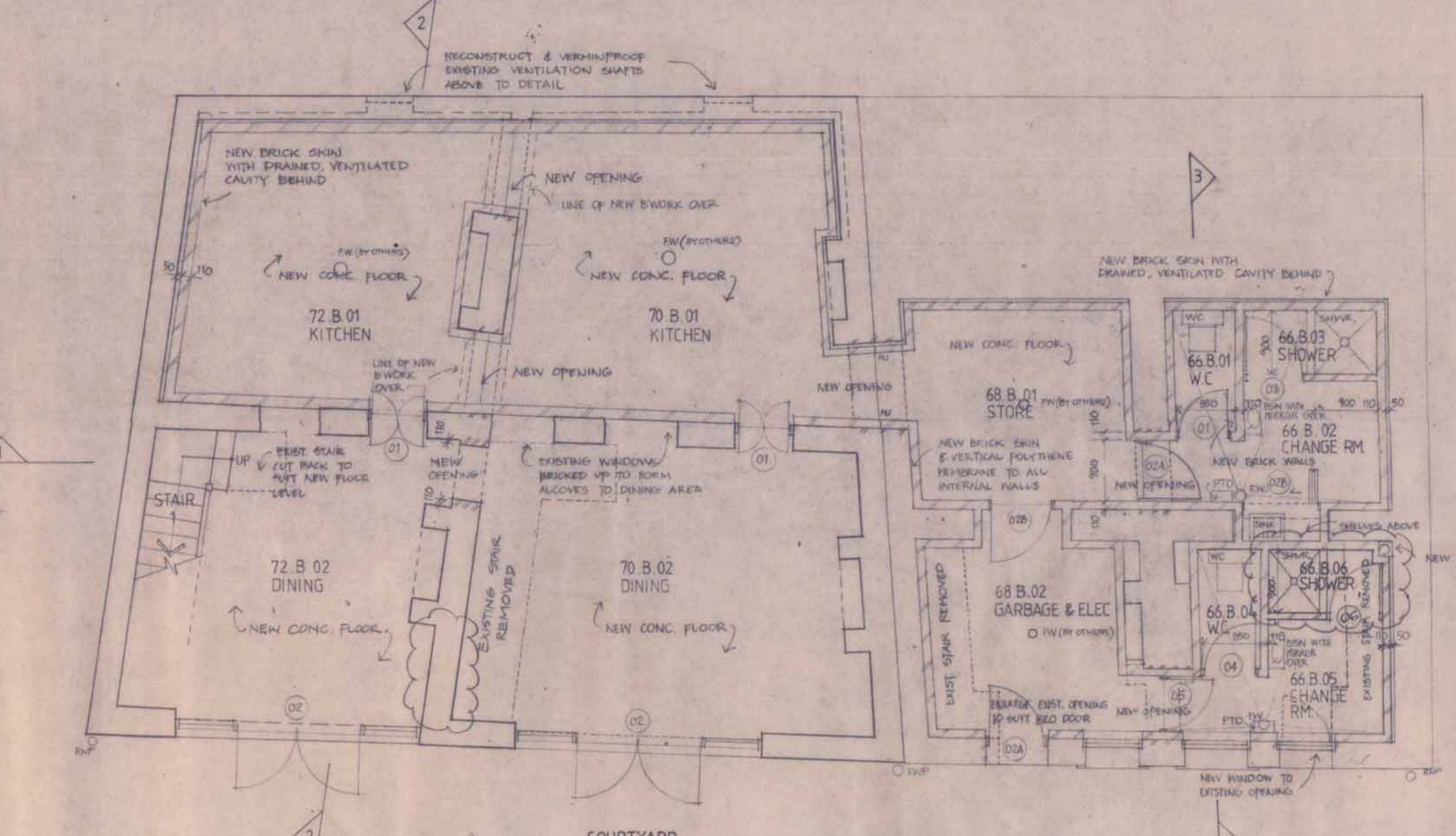
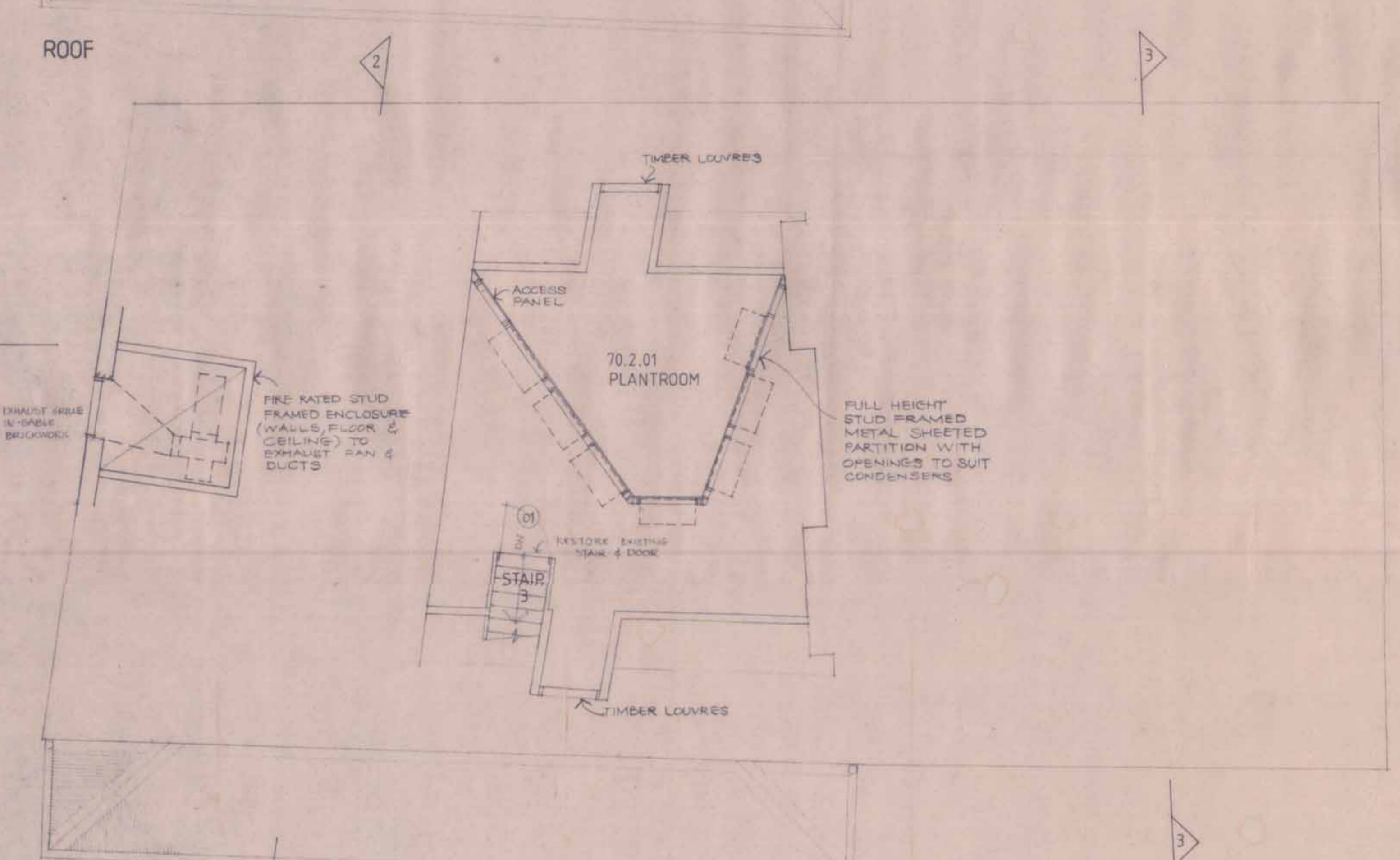
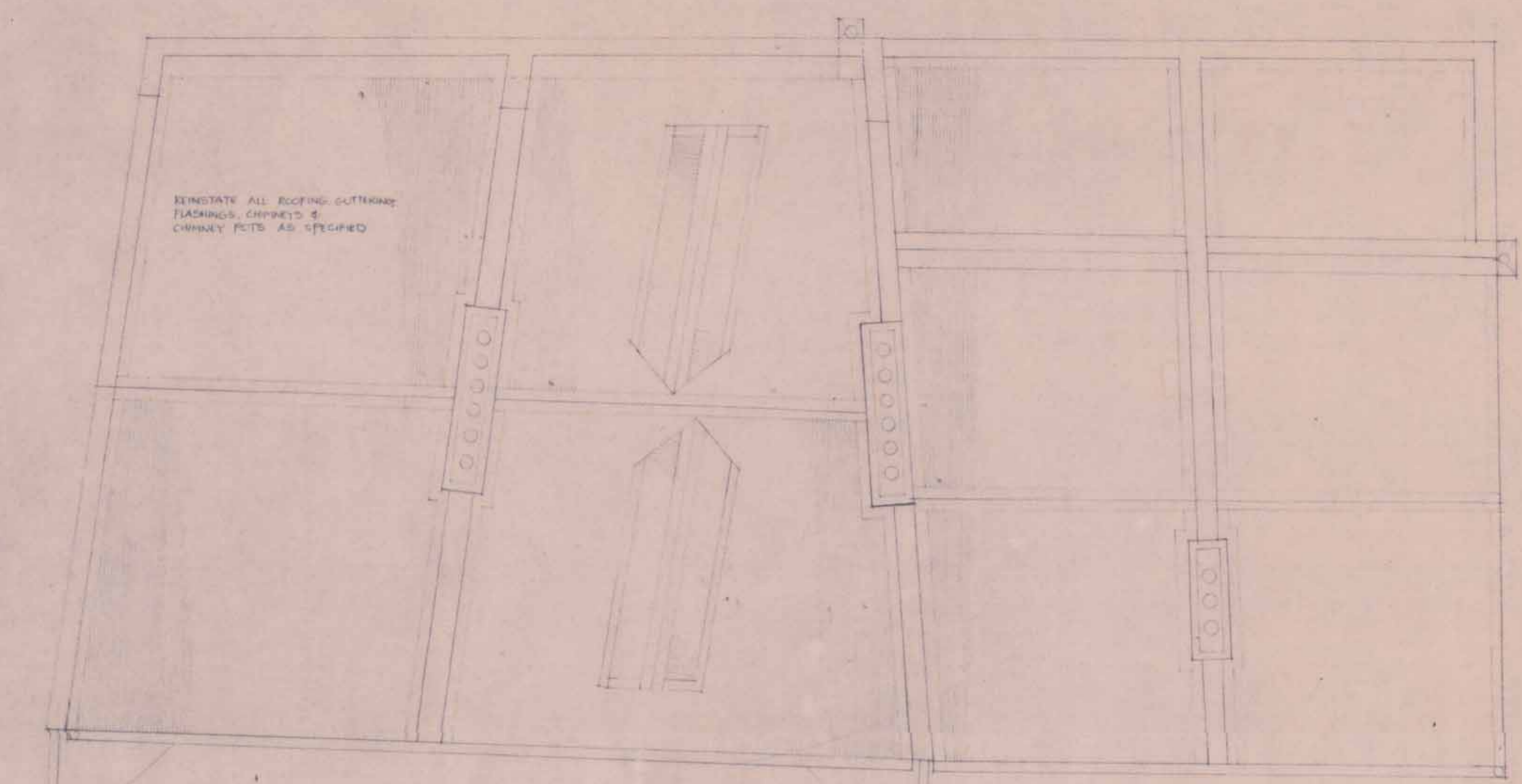
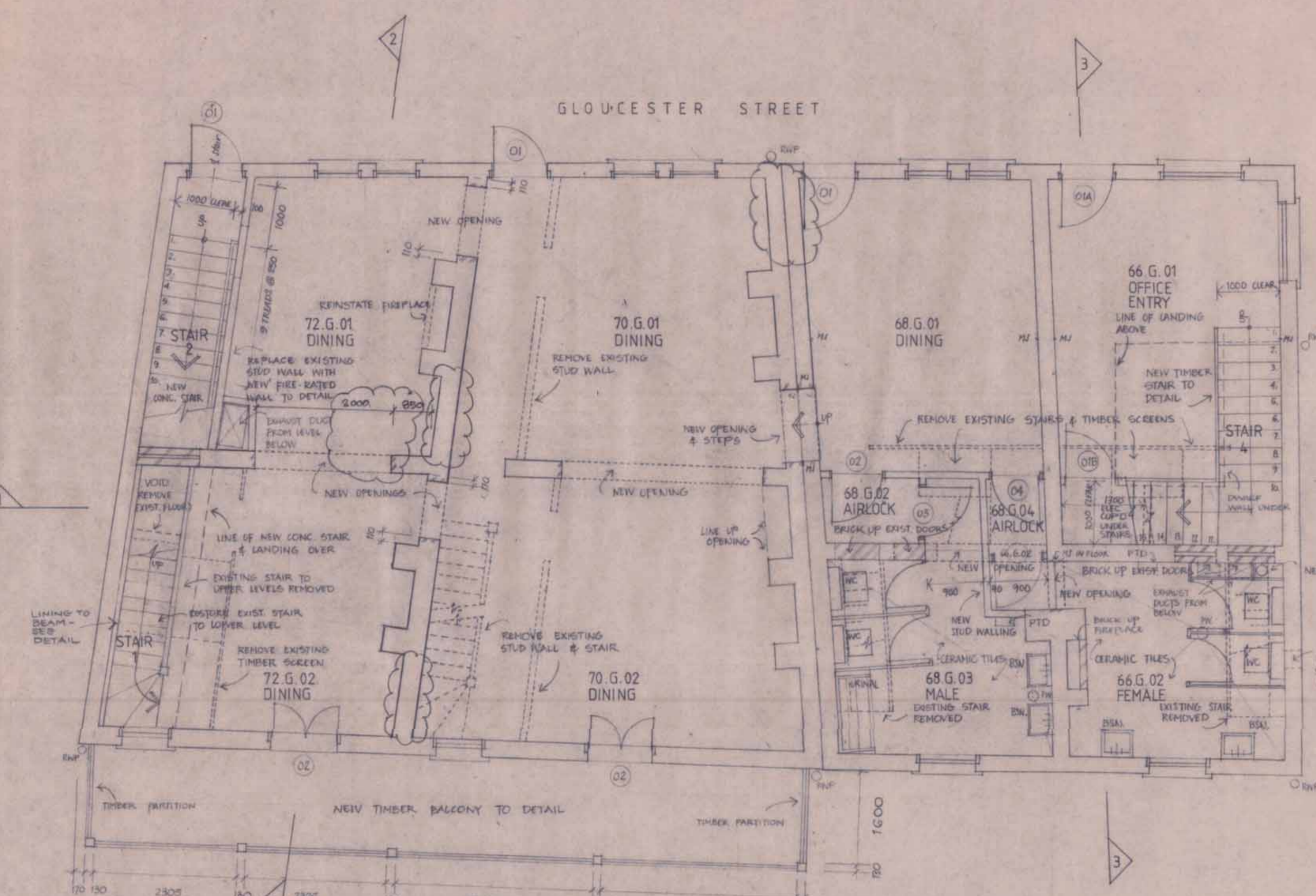


Issue	Date	By
A	24.8.88	REVISIONS
B	30.9.88	REVISIONS
C	01.10.88	REVISIONS
D	02.10.88	REVISIONS



All dimensions and existing conditions shall be checked and verified by the Contractor before proceeding with the work.

PROPRIETOR
DELVELO PTY LTD
DEVELOPERS & PROPERTY CONSULTANTS
2ND FLOOR 99 SPRING STREET
BONDI JUNCTION 1021 389 2133

PROJECT
HARRINGTON COURT
77-95 HARRINGTON STREET
THE ROCKS-SYDNEY

Mitchell/Giurgola & Thorp Architects
126 George Street Sydney NSW 2000 Australia
Telephone (02) 95221111 Telex 61222MGTCHB Fax (02) 953203

ALTERATIONS TO
BAKERS TERRACE
66-72 GLOUCESTER STREET
THE ROCKS SYDNEY

FLOOR & ROOF PLANS

Scale 1:50	Drawn C.A.
Date 4-8-88	Approved
Job No. 57010	Sheet No. A 054 D



Appendix C

Standard Exemptions and Heritage
Division Exemption Form

HERITAGE COUNCIL OF NEW SOUTH WALES
EXEMPTION NOTIFICATION FORM – S.57(2) NSW Heritage Act
THERE IS NO FEE PAYABLE FOR AN EXEMPTION

- | | |
|--|--|
| <ul style="list-style-type: none"> • This form should be completed and submitted to the Director, Heritage Branch to notify the Heritage Council of a proposed development that may be exempt under section 57(2) of the Heritage Act. • An application is required under section 60 of the Heritage Act if the proposed development is not covered by the Standard Exemptions Type listed on page 2. • More information is available in the publication “Standard Exemptions for Works Requiring Heritage Council Approval” on the Heritage Branch website at http://www.heritage.nsw.gov.au • The Submission Requirements depend on the Standard Exemption Type (also refer to page 2, over). • Two copies of the submission are required. • Drawings (A4 or A3) and photographs may be needed in order to explain the proposal and if so, should be attached. | <ul style="list-style-type: none"> • A brief statement of heritage significance of the affected item is required to accompany this form. • This form must be signed by the applicant and land owner. • If the Director of the Heritage Branch is satisfied with the proposed development and accompanying submission, a copy of this form will be endorsed by the Heritage Branch and returned to the Applicant identified below. • If the Director of the Heritage Branch is not satisfied with the proposal and accompanying submission, more information will be requested which may delay endorsement. • This form and attachments should be sent by mail, or delivered in person to:
 <i>Heritage Branch, Department of Planning
 Locked Bag 5020, PARRAMATTA NSW 2124
 Fax: 98738599 Phone: 98738500
 email: heritage@planning.nsw.gov.au</i> |
|--|--|

ITEM AFFECTED BY PROPOSED DEVELOPMENT:

Name of Heritage Item:.....**SHR Listing No:**
Address:.....**Post Code:**.....
Lot Number:..... **Plan Code (DP / SP):**..... **Plan Number:**.....

DESCRIPTION OF THE PROPOSAL (This MUST describe the proposed works. Do not write ‘See attached’):

.....
.....
.....

EXEMPTION UNDER WHICH NOTICE IS GIVEN: **COST OF PROPOSAL: \$**

SUBMISSION REQUIREMENTS MUST BE ATTACHED AS REQUIRED BY THE EXEMPTION NOTES (Page 2)

APPLICANT

Name:.....**Organisation:**.....
Address:.....
Telephone:..... **Mobile:**.....**Fax:**.....
Email:.....**Signature:**

NOTE: The Applicant is responsible for obtaining the Owner’s consent for the proposed works

LAND OWNER

Name:.....**Organisation:**.....
Address:.....
Telephone:..... **Mobile:**.....**Fax:**.....
Email:.....**Signature:**

ENDORSEMENT BY HERITAGE BRANCH (Office Use Only)

The proposed development described on this form has been assessed by the Heritage Branch. The proposed development does not require approval under section 57(1) of the Heritage Act as it is exempt under *Standard Exemption No.....* granted under section 57(2) of the Heritage Act by the Minister for Planning by Order published in the Government Gazette on 5 September 2008, and the relevant criteria have been satisfied. See reverse side for general conditions. An endorsed copy of the information lodged with this form is attached.

.....
DIRECTOR / MANAGER, Heritage Branch Department of Planning (as delegate of NSW Heritage Council)

STANDARD EXEMPTION TYPE	SUBMISSION REQUIREMENTS
1. Maintenance and Cleaning	No notice to Heritage Branch required
2. Repairs	No notice to Heritage Branch required
3. Painting	Details of proposed colour scheme, paint type, surface preparation and paint removal and a statement demonstrating no adverse impact on the heritage significance of the item
4. Excavation	Archaeological assessment or statement demonstrating minor impact or nature of fill (refer to standard exemption for more explanation)
5. Restoration	Statement demonstrating the need for and the material and method of restoration and no adverse impact on heritage significance of the item
6. Development endorsed by Heritage Council or Director-General	No notice to Heritage Branch required
7. Minor activities with little or no adverse impact on heritage significance	Statement demonstrating the activity is of a minor nature and will not adversely affect the heritage significance of the item
8. Non-significant fabric	Statement demonstrating no adverse impact on the heritage significance of the item
9. Change of use	Statement demonstrating the change of use does not involve alteration of fabric or cessation of the primary use or loss of significant associations (refer to standard exemption for more explanation)
10. New buildings	No notice to Heritage Branch required
11. Temporary structures	Statement demonstrating no adverse impact on significant fabric (refer to standard exemption for more explanation)
12. Landscape maintenance	No notice to Heritage Branch required
13. Signage	Statement demonstrating no adverse impact on significant fabric (refer to standard exemption for more explanation)
14. Burial sites and cemeteries	Statement demonstrating that monuments and gravemarkers will not be in conflict with the character of the place
15. Compliance with minimum standards and orders	No notice to Heritage Branch required
16. Safety and security	Structural Engineer's certificate if damaged item poses a safety risk (refer to standard exemption for more explanation)
17. Movable heritage items	Statement describing the proposed location and the reasons for its relocation.

GENERAL CONDITIONS

1. Anything done pursuant to the Standard Exemptions must be carried out in accordance with any relevant development consent or approval under section 63 of the Heritage Act, Guidelines issued by the Heritage Office including *"The Maintenance of Heritage Assets: A Practical Guide" 1998*, *"Movable Heritage Principles" 2000* and *"The Heritage Council Policy on Managing Change to Heritage Items"*.
2. The Standard Exemptions do not apply to anything affecting objects, places, items or sites of heritage significance to Aboriginal people or which affect traditional access by Aboriginal people.
3. Anything done pursuant to the Standard Exemptions must be specified, supervised and carried out by people with knowledge, skills and experience appropriate to the work.

NOTE: Refer to the Standard Exemptions granted under section 57(2) of the Heritage Act by the Minister for Planning published in the Government Gazette on 5 September 2008, for more details.

HERITAGE INFORMATION SERIES

STANDARD EXEMPTIONS FOR WORKS REQUIRING HERITAGE COUNCIL APPROVAL

Heritage Council



of New South Wales

DISCLAIMER

Any representation, statement, opinion or advice, expressed or implied in this publication is made in good faith but on the basis that the State of New South Wales, its agents and employees are not liable (whether by reason of negligence, lack of care or otherwise) to any person for any damage or loss whatsoever which has occurred or may occur in relation to that person taking or not taking (as the case may be) action in respect of any representation, statement or advice referred to above.

Heritage Branch,
Department of Planning
Locked Bag 5020
Parramatta NSW 2124
Ph: (02) 9873 8500
Fax: (02) 9873 8599
www.heritage.nsw.gov.au

© Crown copyright 1999
New edition 2003, revised 2004, 2005
New edition 2006, revised 2009

ISBN 1 921121 03 3

HO 06/04

CONTENTS

INTRODUCTION	4
WHY HAVE STANDARD EXEMPTIONS?	5
HOW WILL EXEMPTIONS ALREADY IN PLACE BE AFFECTED BY THE NEW STANDARD EXEMPTIONS?	5
WHAT OTHER APPROVALS ARE NECESSARY TO DO WORK ON A HERITAGE ITEM?	5
HOW TO RELATE THE STANDARD EXEMPTION CLAUSES TO YOUR HERITAGE ITEM	6
SCHEDULE OF STANDARD EXEMPTIONS	7
GENERAL CONDITIONS	8
STANDARD EXEMPTION 1: MAINTENANCE AND CLEANING	10
STANDARD EXEMPTION 2: REPAIRS	11
STANDARD EXEMPTION 3: PAINTING	13
STANDARD EXEMPTION 4: EXCAVATION	15
STANDARD EXEMPTION 5: RESTORATION	17
STANDARD EXEMPTION 6: DEVELOPMENT ENDORSED BY THE HERITAGE COUNCIL OR DIRECTOR-GENERAL	18
STANDARD EXEMPTION 7: MINOR ACTIVITIES WITH LITTLE OR NO ADVERSE IMPACT ON HERITAGE SIGNIFICANCE	19
STANDARD EXEMPTION 8: NON-SIGNIFICANT FABRIC	20
STANDARD EXEMPTION 9: CHANGE OF USE	21
STANDARD EXEMPTION 10: NEW BUILDINGS	22
STANDARD EXEMPTION 11: TEMPORARY STRUCTURES	23
STANDARD EXEMPTION 12: LANDSCAPE MAINTENANCE	24
STANDARD EXEMPTION 13: SIGNAGE	26
STANDARD EXEMPTION 14: BURIAL SITES AND CEMETERIES	28
STANDARD EXEMPTION 15: COMPLIANCE WITH MINIMUM STANDARDS AND ORDERS	29
STANDARD EXEMPTION 16: SAFETY AND SECURITY	30
STANDARD EXEMPTION 17: MOVABLE HERITAGE ITEMS	31

INTRODUCTION

In NSW important items of our environmental heritage are listed on the State Heritage Register. Any changes to those items should respect and retain those qualities and characteristics that make the heritage place special.

Any major works proposed for **State Heritage Register items** therefore need to be assessed and approved by the Heritage Council to ensure that the heritage significance of the item will not be adversely affected.

However, the assessment process can waste the time and resources of both the owner and the Heritage Council if the works are only minor in nature and will have minimal impact on the heritage significance of the place. The Heritage Act allows the Minister for Planning, on the recommendation of the Heritage Council, **to grant exemptions for certain activities** which would otherwise require approval under the NSW Heritage Act.

There are two types of exemptions which can apply to a heritage item listed on the State Heritage Register:

1. **standard exemptions** for all items on the State Heritage Register. Typical activities that are exempted include building maintenance, minor repairs, alterations to certain interiors or areas and change of use.
2. **site specific exemptions** for a particular heritage item can be approved by the Minister on the recommendation of the Heritage Council.

These guidelines have been prepared to inform owners and managers of heritage items listed on the State Heritage Register about the standard exemptions. They also explain how to develop site specific exemptions for a heritage item.

The State Heritage Register

Heritage places and items of particular importance to the people of New South Wales are listed on the State Heritage Register. The Register was created in April 1999 by amendments to the *Heritage Act 1977*.

The key to listing on the State Heritage Register is the level of significance. Only those heritage items which are of **state significance in NSW** are listed on the State Heritage Register.

To check whether an item is listed on the register, check the online heritage database on the homepage of the Heritage Branch, Department of Planning:

www.heritage.nsw.gov.au

This online database lists all statutorily protected items in NSW. It may be accessed from the homepage, via the Listings tab, then Heritage databases.

WHY HAVE STANDARD EXEMPTIONS?

The standard exemptions apply to all items listed on the State Heritage Register. These exemptions came into force on 5 September, 2008. They replace all previous standard exemptions.

The current exemptions replace those gazetted on 4 April 2006 and as amended 28 April 2006. They relate to a broad range of minor development and will result in a more streamlined approval process.

The purpose of the standard exemptions is to clarify for owners, the Heritage Branch and local councils what kind of maintenance and minor works can be undertaken without needing Heritage Council approval. This ensures that owners are not required to make unnecessary applications for minor maintenance and repair.

The Heritage Council has prepared guidelines to help owners and managers to interpret and apply the standard exemptions. Those guidelines were first published in 2004 and have been incorporated into this document.

HOW WILL EXEMPTIONS ALREADY IN PLACE BE AFFECTED BY THE NEW STANDARD EXEMPTIONS?

1. **Standard Exemptions:** The new standard exemptions replace all existing standard exemptions.
2. **Site Specific Exemptions:** Some heritage items have site specific exemptions for works other than those in the standard list. Site specific exemptions will continue to remain in force.

WHAT OTHER APPROVALS ARE NECESSARY TO DO WORK ON A HERITAGE ITEM?

The exemptions only reduce the need to obtain approval from the Heritage Council, under section 60 of the Heritage Act, to carry out works to a heritage item listed on the State Heritage Register. You should check with your local council for information on additional development and building approvals, and with the Heritage Branch for other approvals which may be required under the Heritage Act, such as an Excavation Permit.

HOW TO RELATE THE STANDARD EXEMPTION CLAUSES TO YOUR HERITAGE ITEM

The standard exemption clauses can be grouped under two headings:

- maintenance and repairs;
- alterations.

Clauses have been kept as concise as possible to avoid ambiguities. The terminology used is consistent with the Australia ICOMOS *Burra Charter*. Australia ICOMOS is the Australian Chapter of International Council on Monuments and Sites, a UNESCO-affiliated international organisation of conservation specialists. The *Burra Charter* is a nationally accepted standard for assessing and managing change to heritage items.

Before you develop firm proposals for changes to the heritage item, take the following actions:

- [1.] Check the boundaries of the item to which the State Heritage Register listing applies;
- [2.] Check the exemptions which apply to your heritage item;
- [3.] Read these explanatory notes to ensure that the work you propose is exempted, and check if prior Heritage Council notification and endorsement is required before the works are commenced;
- [4.] If the work is not exempted, apply to the Heritage Council for approval under section 60 of the Heritage Act;
- [5.] Check with the local council concerning other approvals that may be required;
- [6.] Check with the Heritage Branch if the work you propose involves the disturbance of relics more than 50 years old.

SCHEDULE OF STANDARD EXEMPTIONS

HERITAGE ACT, 1977

NOTICE OF ORDER UNDER SECTION 57(2) OF THE HERITAGE ACT, 1977

I, the Minister for Planning, pursuant to subsection 57(2) of the Heritage Act 1977, on the recommendation of the Heritage Council of New South Wales, do by this Order:

- 1. revoke the Schedule of Exemptions to subsection 57(1) of the Heritage Act made under subsection 57(2) and published in the Government Gazette on 22 February 2008; and**
- 2. grant standard exemptions from subsection 57(1) of the Heritage Act 1977, described in the Schedule attached.**

**FRANK SARTOR
Minister for Planning
Sydney, 11 July 2008**

SCHEDULE OF EXEMPTIONS TO SUBSECTION 57(1) OF THE

HERITAGE ACT 1977

MADE UNDER SUBSECTION 57(2)

GENERAL CONDITIONS

1. These general conditions apply to all of the following Exemptions.
2. Anything done pursuant to the following Exemptions must be carried out in accordance with relevant Guidelines issued by the Heritage Branch including *“The Maintenance of Heritage Assets: A Practical Guide” 1998, “Movable Heritage Principles” 2000 and “The Heritage Council Policy on Managing Change to Heritage Items”*.
3. The following Standard Exemptions do not apply to anything affecting objects, places, items or sites of heritage significance to Aboriginal people or which affect traditional access by Aboriginal people.
4. The Director, and Managers employed by the Heritage Branch,- Department of Planning; the Executive Director, Tenant and Asset Management Services, employed by the Sydney Harbour Foreshore Authority; the Executive Director Culture & Heritage employed by the Department of Environment and Climate Change and the General Manager, Sustainability employed by the Sydney Water Corporation may perform any of the functions of the Director-General of the Department of Planning (Director-General) under these exemptions.

The authorisation to the Executive Director, Tenant and Asset Management Services of the Sydney Harbour Foreshore Authority is restricted to land for which it is the delegated approval body under section 169 of the Heritage Act, and the preparation and submission of information required to demonstrate that compliance with the criteria contained in these exemptions is satisfied, must not be carried out by the Executive Director, Tenant and Asset Management Services.

The authorisation to the Executive Director Culture & Heritage of the Department of Environment and Climate Change is restricted to land for which it is the delegated approval body under section 169 of the Heritage Act, and the preparation and submission of information required to demonstrate that compliance with the criteria contained in these exemptions is satisfied, must not be carried out by the Executive Director Culture & Heritage.

The authorisation to the General Manager, Sustainability employed by the Sydney Water Corporation is restricted to land for which it is the delegated approval body under section 169 of the Heritage Act, and the preparation and submission of information required to demonstrate that compliance with the criteria contained in these exemptions is

satisfied, must not be carried out by the General Manager, Sustainability.

5. In these Exemptions, words shall be given the same meaning as in the *Heritage Act 1977* (“the Act”) unless the contrary intention appears from the context of the exemption.
6. Anything done pursuant to the following Exemptions must be specified, supervised and carried out by people with knowledge, skills and experience appropriate to the work.

Guidelines

In addition to the above guidelines listed in paragraph two, the Heritage Council adopted further guidelines on 7 April 2004 (revised 2009) for use in interpreting and applying the standard exemptions.

If it is unclear whether proposed development satisfies the requirements of these exemptions, an application will be required under section 60 of the Heritage Act.

STANDARD EXEMPTION 1: MAINTENANCE AND CLEANING

1. The following maintenance and cleaning does not require approval under subsection 57(1) of the Act:

- (a) the maintenance of an item to retain its condition or operation without the removal of or damage to the existing fabric or the introduction of new materials;
- (b) cleaning including the removal of surface deposits, organic growths or graffiti by the use of low pressure water (less than 100 psi at the surface being cleaned) and neutral detergents and mild brushing and scrubbing.

NOTE 1: Traditional finishes such as oils and waxes must continue to be used for timber surfaces rather than modern alternative protective coatings such as polyurethane or acrylic which may seal the surface and can cause damage.

NOTE 2: Surface patina which has developed on the fabric may be an important part of the item's significance and if so needs to be preserved during maintenance and cleaning.

Guidelines

Maintenance is distinguished from repairs, restoration and reconstruction as it does not involve the removal of or damage to existing fabric or the introduction of new materials. It is a continuing process of protective care. Typical maintenance activity includes:

- *the removal of vegetation and litter from gutters and drainage systems;*
- *resecuring and tightening fixings of loose elements of building fabric;*
- *lubricating equipment and services which have moving parts;*
- *the application of protective coatings such as limewash, polish, oils and waxes to surfaces which have previously had such coatings applied; and*
- *cleaning by the removal of surface deposits using methods other than aggressive mechanical or chemical techniques such as high pressure, high temperature or strong solvents which may affect the substrate.*

This standard exemption applies to the maintenance of all types of heritage items including buildings, works, landscapes, cemeteries and movable heritage. Reference should be made to other relevant standard exemptions (#12, 14 and 17) for particular types of items.

STANDARD EXEMPTION 2: REPAIRS

1. 1. Repair to an item which is of the type described in (a) or (b) below does not require approval under subsection 57(1) of the Act:

- (a) the replacement of services such as cabling, plumbing, wiring and fire services that uses existing service routes, cavities or voids or replaces existing surface mounted services and does not involve damage to or the removal of significant fabric;
- (b) the repair (such as refixing and patching) or the replacement of missing, damaged or deteriorated fabric that is beyond further maintenance, which matches the existing fabric in appearance, material and method of affixing and does not involve damage to or the removal of significant fabric.

NOTE 1: Repairs must be based on the principle of doing as little as possible and only as much as is necessary to retain and protect the element. Therefore replacement must only occur as a last resort where the major part of an element has decayed beyond further maintenance.

NOTE 2: Any new materials used for repair must not exacerbate the decay of existing fabric due to chemical incompatibility, obscure existing fabric or limit access to existing fabric for future maintenance.

NOTE 3: Repair must maximise protection and retention of fabric and include the conservation of existing detailing, such as vents, capping, chimneys, carving, decoration or glazing.

Guidelines

This standard exemption is not intended to allow the cumulative replacement of large amounts or a high proportion of the fabric of an item. If replacement of large amounts of fabric is necessary, an application will be required to be submitted under s. 60 of the Heritage Act. If there is uncertainty about whether the proposed extent of repair is exempt from approval, advice should be sought from the Heritage Branch, Department of Planning.

Repairs should have detailed specifications and carried out by licensed tradespeople with experience in the conservation of heritage buildings. It is essential that the composition of elements of the fabric such renders, mortars, timber species and metal types remain the same to assist with matching appearance and avoiding chemical incompatibility.

Repair may involve reconstruction which means returning an item to a known earlier state. This may involve the use of new or recycled materials.

Reconstruction must satisfy a four-part test to qualify for exemption from approval:

- 1. The nature of the earlier state being reconstructed must be known. Where there is conjecture about the earlier state of the fabric or where it is proposed to change the appearance, material or method of fixing of the fabric an application under s.60 of the Heritage Act will be required.*
- 2. The replacement fabric must be matching in appearance and method of fixing. The use of salvaged or recycled fabric can be a valuable resource in matching appearance in preference to the use of new fabric which may appear obtrusive. However the damage to other heritage buildings by the salvaging of fabric for reuse is unacceptable. Salvaged materials must be judiciously sourced so as not to encourage secondary damage to other heritage resources. The use of artificial ageing techniques to assist the matching of new with original fabric is only advocated where there is an obtrusive mismatch of materials which negatively impacts on the heritage significance of the item. Ideally, new and original fabric should be subtly discernable on close examination to assist interpretation of the history of change to the building.*
- 3. The fabric being replaced must be beyond further maintenance. The replacement of fabric may only occur where fabric is missing or it is so damaged or deteriorated that it is beyond further maintenance. In many cases the judgement about the level of deterioration and the effectiveness of further maintenance will require the advice of a person who is suitably experienced in similar heritage conservation projects. If it is unclear that the fabric is beyond further maintenance, its replacement will require the submission of an application under s. 60 of the Heritage Act.*
- 4. Significant fabric must not be damaged or removed. In all cases of repair, the damage or removal of significant fabric is not permitted without approval. Significant fabric is that which contributes to the heritage significance of the item. The identification of the level of significance of fabric will usually require the advice of a person who is suitably experienced in similar heritage conservation projects. The damage or removal of significant fabric will require the submission of an application under s. 60 of the Heritage Act.*

New material used in repairs should where possible be date stamped in a location which is not conspicuous but is legible on close examination. Archival recording of removed and replacement fabric is advocated and should be used in interpretive displays where practicable.

STANDARD EXEMPTION 3: PAINTING

1. Painting does not require approval under subsection 57(1) of the Act if the painting:
 - (a) does not involve the disturbance or removal of earlier paint layers other than that which has failed by chalking, flaking, peeling or blistering;
 - (b) involves over-coating with an appropriate surface as an isolating layer to provide a means of protection for significant earlier layers or to provide a stable basis for repainting; and
 - (c) employs the same colour scheme and paint type as an earlier scheme if they are appropriate to the substrate and do not endanger the survival of earlier paint layers.
2. Painting which employs a different colour scheme and paint type from an earlier scheme does not require approval under subsection 57(1) of the Act, provided that:
 - (a) the Director-General is satisfied that the proposed colour scheme, paint type, details of surface preparation and paint removal will not adversely affect the heritage significance of the item; and
 - (b) the person proposing to undertake the painting has received a notice advising that the Director-General is satisfied.
3. A person proposing to undertake repainting of the kind described in paragraph 2 must write to the Director-General and describe the proposed colour scheme, paint type, details of surface preparation and paint removal involved in the repainting. If the Director-General is satisfied that the proposed development meets the criteria set out in paragraph 2(a) the Director-General shall notify the applicant.

NOTE: Preference should be given to the re-establishment of historically significant paint schemes of the item that are appropriate to the significance of the building.

Guidelines

Painting of surfaces which have not previously been painted such as face brickwork, stone, concrete or galvanised iron is likely to adversely affect the heritage significance of the item and is not exempt from approval under this standard exemption. Likewise, the stripping of paint coatings which were intended to be protective may expose the substrate to damage and cause the loss of the historical record and significance of the building. In cases where surface preparation has revealed significant historic paint layers, repainting should facilitate the interpretation of the evolution of the building by displaying appropriately located sample patches of historic paint schemes. This

information should also be examined if it is proposed to recreate earlier finishes or paint schemes.

Paint removal of failed layers to achieve a stable base for repainting is exempt from approval but intervention should be minimised to avoid the loss of the significant historical record. Where old paint layers are sound they should be left undisturbed. The removal of paint with a high content of lead or other hazardous materials requires considerable care and use of experienced tradespeople as its disturbance can create health hazards. If the removal of such paint layers will adversely affect the heritage significance of the item, an application will be required under section 60 of the Heritage Act.

Reference should be made to The Maintenance Series, NSW Heritage Branch, particularly Information Sheets 6.2 Removing Paint from Old Buildings, 7.2 Paint Finishes and 7.3 Basic Limewash which are available online at www.heritage.nsw.gov.au.

STANDARD EXEMPTION 4: EXCAVATION

- 1. Excavation or disturbance of land of the kind specified below does not require approval under subsection 57(1) of the Act, provided that the Director-General is satisfied that the criteria in (a), (b) or (c) have been met and the person proposing to undertake the excavation or disturbance of land has received a notice advising that the Director-General is satisfied that:**
 - (a) an archaeological assessment, zoning plan or management plan has been prepared in accordance with Guidelines published by the Heritage Council of NSW which indicates that any relics in the land are unlikely to have State or local heritage significance; or**
 - (b) the excavation or disturbance of land will have a minor impact on archaeological relics including the testing of land to verify the existence of relics without destroying or removing them; or**
 - (c) a statement describing the proposed excavation demonstrates that evidence relating to the history or nature of the site, such as its level of disturbance, indicates that the site has little or no archaeological research potential.**

- 2. Excavation or disturbance of land of the kind specified below does not require approval under subsection 57(1) of the Act:**
 - (a) the excavation or disturbance of land is for the purpose of exposing underground utility services infrastructure which occurs within an existing service trench and will not affect any other relics;**
 - (b) the excavation or disturbance of land is to carry out inspections or emergency maintenance or repair on underground utility services and due care is taken to avoid effects on any other relics;**
 - (c) the excavation or disturbance of land is to maintain, repair, or replace underground utility services to buildings which will not affect any other relics;**
 - (d) the excavation or disturbance of land is to maintain or repair the foundations of an existing building which will not affect any associated relics;**
 - (e) the excavation or disturbance of land is to expose survey marks for use in conducting a land survey**

- 3. A person proposing to excavate or disturb land in the manner described in paragraph 1 must write to the Director-General and describe the proposed excavation or disturbance of land and set out why it satisfies the criteria set out in paragraph 1. If the Director-General is satisfied that the proposed development meets the criteria set out in paragraph 1 (a), (b) or (c) the Director-General shall notify the applicant.**

NOTE 1: Any excavation with the potential to affect Aboriginal objects must be referred to the Director-General of the Department of Environment and Climate Change.

NOTE 2: If any Aboriginal objects are discovered on the site, excavation or disturbance is to cease and the Department of Environment and Climate Change is to be informed in accordance with section 91 of the National Parks and Wildlife Act, 1974.

NOTE 3: This exemption does not allow the removal of State significant relics.

NOTE 4: Where substantial intact archaeological relics of State or local significance, not identified in the archaeological assessment, zoning plan, management plan or statement required by this exemption, are unexpectedly discovered during excavation, work must cease in the affected area and the Heritage Council must be notified in writing in accordance with section 146 of the Act. Depending on the nature of the discovery, additional assessment and possibly an excavation permit may be required prior to the recommencement of excavation in the affected area.

NOTE 5: Archaeological research potential of a site is the extent to which further study of relics which are likely to be found is expected to contribute to improved knowledge about NSW history which is not demonstrated by other sites or archaeological resources.

STANDARD EXEMPTION 5: RESTORATION

- 1. Restoration of an item by returning significant fabric to a known earlier location without the introduction of new material does not require approval under subsection 57(1) of the Act.**
- 2. The following restoration does not require approval under subsection 57(1) of the Act, provided that the Director-General is satisfied that the criteria in (a) have been met and the person proposing to undertake the restoration has received a notice advising that the Director-General is satisfied:**
 - (a) the restoration of an item without the introduction of new material (except for fixings) to reveal a known earlier configuration by removing accretions or reassembling existing components which does not adversely affect the heritage significance of the item.**
- 3. A person proposing to undertake restoration of the kind described in paragraph 2 must write to the Director-General and set out why there is a need for restoration to be undertaken and the proposed material and method of restoration. If the Director-General is satisfied that the proposed development meets the criteria set out in paragraph 2(a), the Director-General shall notify the applicant.**

Guidelines

Restoration in accordance with clause 1 of this standard exemption does not involve the removal of fabric and only relates to the return of fabric which has been removed to storage or has been dislodged from its original location.

STANDARD EXEMPTION 6: DEVELOPMENT ENDORSED BY THE HERITAGE COUNCIL OR DIRECTOR-GENERAL

- 1. Minor development specifically identified as exempt development which does not materially impact on heritage significance, by a conservation policy or strategy within a conservation management plan which has been endorsed by the Heritage Council of NSW or by a conservation management strategy endorsed by the Director-General does not require approval under subsection 57(1) of the Act.**
- 2. A person proposing to do anything of the kind described in paragraph 1 must write to the Director-General and describe the proposed development. If the Director-General is satisfied that the proposed development meets the criteria set out in paragraph 1, the Director-General shall notify the applicant.**

Guidelines

This standard exemption does not exempt development that is consistent with a conservation policy or strategy contained in an endorsed conservation management plan or interim conservation management strategy other than development that is specifically identified as exempt development in that conservation plan or strategy.

STANDARD EXEMPTION 7: MINOR ACTIVITIES WITH LITTLE OR NO ADVERSE IMPACT ON HERITAGE SIGNIFICANCE

- 1. Anything which in the opinion of the Director-General is of a minor nature and will have little or no adverse impact on the heritage significance of the item does not require approval under subsection 57(1) of the Act.**
- 2. A person proposing to do anything of the kind described in paragraph 1 must write to the Director-General and describe the proposed activity. If the Director-General is satisfied that the proposed activity meets the criteria set out in paragraph 1, the Director-General shall notify the applicant.**

Guidelines

This standard exemption has the potential to relate to a wide range of minor development. In determining whether a proposed development is minor the Director may have regard to the context of the particular heritage item such as its size and setting. For instance a development may be considered to be minor in the context of Prospect Reservoir's 1200ha curtilage whereas a similar proposal affecting an item on a smaller site may not be considered to be minor.

In order to assess whether a proposal has an adverse affect on heritage significance it is necessary to submit a clear and concise statement of the item's heritage significance and an assessment of whether a proposal impacts on that significance.

STANDARD EXEMPTION 8: NON-SIGNIFICANT FABRIC

1. The following development does not require approval under subsection 57(1) of the Act, provided that the Director-General is satisfied that the criteria in (a) have been met and the person proposing to undertake the development has received a notice advising that the Director-General is satisfied:
 - (a) the alteration of a building involving the construction or installation of new fabric or services or the removal of building fabric which will not adversely affect the heritage significance of the item.
2. A person proposing to do anything of the kind described in paragraph 1 must write to the Director-General and describe the proposed development. If the Director-General is satisfied that the proposed development meets the criteria set out in paragraph 1(a), the Director-General shall notify the applicant.

Guidelines

In order to assess the level of significance of fabric it is necessary to submit a clear and concise statement of the item's heritage significance and to grade the fabric of the place in accordance with its association with or impact on that significance. It may not always be concluded that more recent fabric is of less or no heritage significance.

STANDARD EXEMPTION 9: CHANGE OF USE

1. The change of use of an item or its curtilage or the commencement of an additional or temporary use does not require approval under subsection 57(1) of the Act, provided that the Director-General is satisfied that the criteria in (a) and (b) have been met and the person proposing to undertake the change of use has received a notice advising that the Director-General is satisfied:
 - (a) the use does not involve the alteration of the fabric, layout or setting of the item or the carrying out of development other than that permitted by other standard or site specific exemptions; and
 - (b) the use does not involve the cessation of the primary use for which the building was erected, a later significant use or the loss of significant associations with the item by current users;
2. A person proposing to change the use of an item or its curtilage or to commence an additional or temporary use of an item or its curtilage in the manner described in paragraph 1 must write to the Director-General and describe the changes proposed. If the Director-General is satisfied that the proposed development meets the criteria set out in paragraph 1(a) and (b), the Director-General shall notify the applicant.

Guidelines

For the purposes of this standard exemption any change of use which is inconsistent with specific conditions of any previous approval or consent such as hours of operation or nature of conduct of an activity requires approval under section 57(1) or the modification of an approval under section 65A of the Heritage Act.

STANDARD EXEMPTION 10: NEW BUILDINGS

1. Subdivision under the *Strata Scheme (Freehold Development) Act* or *Strata Scheme (Leasehold Development) Act* of the interior of a building that has been constructed since the listing of the item on the State Heritage Register or the publication of an interim heritage order in the Gazette which applies to the land does not require approval under subsection 57(1) of the Act.
2. Alteration to the interior of a building which has been constructed since the listing of the item on the State Heritage Register or the publication of an interim heritage order in the Gazette which applies to the land does not require approval under subsection 57(1) of the Act.

Guidelines

Subdivision to which clause 1 of this standard exemption applies must not subdivide the curtilage of the exterior of a building other than approved car spaces. A strata plan which otherwise proposes the subdivision of the curtilage of a heritage item requires approval under section 57(1) of the Heritage Act.

For the purposes of clause 2 of this standard exemption, alterations to the interior of a building:

- *do not include internal alterations to additions to buildings which existed prior to the listing of the site on the State Heritage Register or publication of the interim heritage order;*
- *must not affect the external appearance of the building such as by balcony enclosure or window screening; and*
- *must not be inconsistent with any specific conditions of a previous approval.*

Such alterations require approval under section 57(1) of the Heritage Act.

STANDARD EXEMPTION 11: TEMPORARY STRUCTURES

- 1. The erection of temporary structures does not require approval under subsection 57(1) of the Act, provided that the Director-General is satisfied that the criteria in (a) and (b) have been met and the person proposing to erect the structure has received a notice advising that the Director-General is satisfied:**
 - (a) the structure will be erected within and used for a maximum period of 4 weeks after which it will be removed within a period of 2 days and not erected again within a period of 6 months; and**
 - (b) the structure is not to be located where it could damage or endanger significant fabric including landscape or archaeological features of its curtilage or obstruct significant views of and from heritage items.**
- 2. A person proposing to erect a structure of the kind described in paragraph 1 must write to the Director-General and set out the nature of the structure, the use for the structure and how long it will remain in place and the next occasion on which it is anticipated that the structure will be erected. If the Director-General is satisfied that the proposed development meets the criteria set out in paragraphs 1(a) and 1(b) the Director-General shall notify the applicant.**

Guidelines

The cumulative impact of the multiple use of this standard exemption will be considered by the Director in the assessment of the simultaneous construction of a number of temporary structures or a succession of temporary structures which may have a prolonged adverse impact on heritage significance of the item.

STANDARD EXEMPTION 12: LANDSCAPE MAINTENANCE

1. **Landscape maintenance which is of the type described below does not require approval under subsection 57(1) of the Act:**
 - (a) **weeding, watering, mowing, top-dressing, pest control and fertilizing necessary for the continued health of plants, without damage or major alterations to layout, contours, plant species or other significant landscape features;**
 - (b) **pruning (to control size, improve shape, flowering or fruiting and the removal of diseased, dead or dangerous material), not exceeding 10% of the canopy of a tree within a period of 2 years;**
 - (c) **pruning (to control size, improve shape, flowering or fruiting and the removal of diseased, dead or dangerous material) between 10% and 30% of the canopy of a tree within a period of 2 years;**
 - (d) **removal of dead or dying trees which are to be replaced by trees of the same species in the same location; or**
 - (e) **tree surgery by a qualified arborist, horticulturist or tree surgeon necessary for the health of those plants.**

2. **A person proposing to undertake landscape maintenance in the manner described in paragraph 1(b) 1(c) or 1(d) must write to the Director-General and describe the maintenance proposed and provide certification by a qualified or experienced arborist, horticulturist or tree surgeon that the maintenance is necessary for the tree's health or for public safety. If the Director-General is satisfied that the proposed maintenance meets these criteria, the Director-General shall notify the applicant.**

NOTE 1: In relation to cemeteries, landscape features include monuments, grave markers, grave surrounds, fencing, path edging and the like.

NOTE 2: Other standard exemptions may apply to landscape maintenance such as #4 Excavation and #6 Development endorsed by the Heritage Council; and #7 Minor works with no adverse heritage impact.

Guidelines

Landscape features and gardens can be of heritage significance in their own right. They are often vital to the curtilage of a heritage item and fundamental to the setting of other (eg; built or archaeological) heritage items and important to the appreciation of their heritage significance. Landscape setting is by its nature evolving and often requires more regular maintenance than other elements of heritage fabric. Horticultural advice may be required to ensure a regime of maintenance appropriate to the retention of the heritage significance of a place.

General advice about landscape maintenance is provided by The Maintenance of Heritage Assets: A Practical Guide Information Sheet 9.1 Heritage Gardens and Grounds, printed versions available from the Heritage Branch, Department of Planning.

General advice about heritage gardens is also available on the Heritage Branch website at: http://www.heritage.nsw.gov.au/06_subnav_10.htm and at: www.gardenhistorysociety.org.au.

STANDARD EXEMPTION 13: SIGNAGE

1. The erection of signage which is of the types described in (a) or (b) below does not require approval under subsection 57(1) of the Act:
 - (a) temporary signage which is located behind or on the glass surface of a shop window which is not internally illuminated or flashing and is to be removed within eight weeks; or
 - (b) a real estate sign indicating that the place is for auction, sale or letting and related particulars and which is removed within 10 days of the sale or letting of the place;
2. The erection of signage which is of the types described in (a) or (b) below does not require approval under subsection 57(1) of the Act, provided that the Director-General is satisfied that the criteria in (a) and (b) respectively have been met and the person proposing to erect it has received a notice advising that the Director-General is satisfied:
 - (a) the erection of non-illuminated signage for the sole purpose of providing information to assist in the interpretation of the heritage significance of the item and which will not adversely affect significant fabric including landscape or archaeological features of its curtilage or obstruct significant views of and from heritage items; or
 - (b) signage which is in the form of a flag or banner associated with a building used for a purpose which requires such form of promotion such as a theatre or gallery, which is displayed for a maximum period of eight weeks and which will not adversely affect significant fabric including landscape or archaeological features of its curtilage;
3. A person proposing to erect signage of the kind described in paragraph 2 must write to the Director-General and describe the nature and purpose of the advertising or signage. If the Director-General is satisfied that the proposed development meets the criteria set out in paragraph 2(a) or 2(b), the Director-General shall notify the applicant.
4. Signage of the kind described in paragraphs 1 and 2 must:
 - (a) not conceal or involve the removal of signage which has an integral relationship with the significance of the item;
 - (b) be located and be of a suitable size so as not to obscure or damage significant fabric of the item;
 - (c) be able to be later removed without causing damage to the significant fabric of the item; and
 - (d) reuse existing fixing points or insert fixings within existing joints without damage to adjacent masonry.

Guidelines

In addition to the requirements of clause 4 of the standard exemptions, signage may be controlled by development control plans or signage policies prepared by the relevant local council. The operation of the standard exemptions do not affect the requirements for consent by local councils or the need to satisfy any signage policies which may have been adopted by them.

Additional forms of signage not addressed by this standard exemption may not require approval under section 57(1) of the Heritage Act if they satisfy the requirements of other standard exemptions such as Standard Exemption 7 (Minor Activities with no Adverse Impact on Heritage Significance) or Standard Exemption 8 (Non-significant Fabric).

Signage in accordance with clause 2(a) of the standard exemption for the purpose of assisting the interpretation of heritage significance:

- requires approval under section 57(1) of the Heritage Act if additional information is provided which is unrelated to heritage interpretation such as commercial promotion or sponsorship; and*
- must be in accordance with Interpreting Heritage Places and Items published by the Heritage Council and available online.*

STANDARD EXEMPTION 14: BURIAL SITES AND CEMETERIES

1. Development on land within a burial site or cemetery which is of the type described in (a), (b) or (c) below does not require approval under subsection 57(1) of the Act:

- (a) the creation of a new grave;
- (b) the erection of monuments or grave markers in a place of consistent character, including materials, size and form, which will not be in conflict with the character of the place; or
- (c) an excavation or disturbance of land for the purpose of carrying out conservation or repair of monuments or grave markers;

provided that there will be no disturbance to human remains, to relics in the form of grave goods, associated landscape features or to a place of Aboriginal heritage significance.

2. A person proposing to carry out development in the manner described in paragraph 1(b) or (c) must write to the Director-General and describe the development proposed. If the Director-General is satisfied that the proposed development meets the criteria set out in paragraph 1, the Director-General shall notify the applicant.

3. This exemption does not apply to the erection of above-ground chambers, columbaria or vaults, or the designation of additional areas to be used as a burial place.

NOTE 1: Other standard exemptions apply to the maintenance, cleaning and repair of burial sites and cemeteries.

Guidelines

In addition to burial remains and artefacts, above ground cemetery elements may include headstones, footstones and other burial markers or monuments and associated elements such as grave kerbing, iron grave railings, grave furniture, enclosures and plantings. It is important that cemeteries listed on the State Heritage Register have a conservation policy or conservation management plan endorsed by the Heritage Council and that it records the history and significant fabric of the place with policies for conservation, relocation and the erection of new monuments and grave markers.

Additional advice about the management of heritage cemeteries is provided in:

- *Cemeteries: Guidelines for their Care and Conservation, Heritage Council of NSW and Department of Planning, 1992;*
- *Skeletal Remains, NSW Heritage Council, 1998;*
- *Guidelines for Cemetery Conservation, National Trust of Australia (NSW), 2002.*

STANDARD EXEMPTION 15: COMPLIANCE WITH MINIMUM STANDARDS AND ORDERS

1. Development which is required for the purpose of compliance with the minimum standards set out in Part 3 of the *Heritage Regulation 1999* or an order issued under either:
 - (a) section 120 of the *Heritage Act 1977* regarding minimum standards of maintenance and repair; or
 - (b) section 121S of the *Environmental Planning and Assessment Act 1979* regarding an order which is consistent with a submission by the Heritage Council under subsection 121S(6) of that Act;does not require approval under subsection 57(1) of the Act.

Guidelines

This standard exemption is intended to facilitate and expedite compliance with orders and minimum standards of maintenance and repair.

The Minimum Standards of Maintenance and Repair replaced the “wilful neglect” provisions of the Heritage Act in 1999. The minimum standards are contained in Part 3 of the Heritage Regulation 2005 and are reproduced in the Heritage Information Series published by the Heritage Branch, Department of Planning. The minimum standards only apply to items listed on the State Heritage Register and relate to:

- *weather protection;*
- *fire prevention and protection;*
- *security; and*
- *essential maintenance and repair to prevent serious or irreparable damage.*

Maintenance and repair which exceed the minimum standards in the Regulation may be exempt from approval under other standard exemptions (refer to #1 and #2).

Orders under s.121S(6) of the EP&A Act are those given by a council or other consent authority in relation to an item listed on the State Heritage Register, land to which an interim heritage order applies or a heritage item listed under an environmental planning instrument. Orders must not be given in relation to items listed on the State Heritage Register or land to which an interim heritage order relates unless the consent authority has given notice of it to the Heritage Council and considered any submission made by it.

STANDARD EXEMPTION 16: SAFETY AND SECURITY

1. The following development does not require approval under subsection 57(1) of the Act, provided that the Director-General is satisfied that the criteria in (a) or (b) have been met and the person proposing to undertake the development has received a notice advising that the Director-General is satisfied:
 - (a) the erection of temporary security fencing, scaffolding, hoardings or surveillance systems to prevent unauthorised access or secure public safety which will not adversely affect significant fabric of the item including landscape or archaeological features of its curtilage; or
 - (b) development, including emergency stabilisation, necessary to secure safety where a building or work or part of a building or work has been irreparably damaged or destabilised and poses a safety risk to its users or the public.
2. A person proposing to undertake development of the kind described in paragraph 1 must write to the Director-General and describe the development and, if it is of the kind set out in 1(b), provide certification from a structural engineer having experience with heritage items confirming the necessity for the development with regard to the criteria set out in 1(b) and any adverse impact on significant fabric. If the Director-General is satisfied that the proposed development meets the criteria set out in paragraph 1(a) or (b), the Director-General shall notify the applicant.

Guidelines

Development exempt under this standard exemption must be for the temporary or emergency securing of safety for users or the public. Permanent upgrading of site or building security may be exempt under other standard exemptions such as #7 (Minor Activities with little or no Adverse Impact on Heritage Significance) or #8 (Non-significant Fabric). Development described in 1(b) of this exemption is intended to apply in circumstances where there has been damage caused by a sudden change in circumstances of the building such as a catastrophic event, rather than safety risks which may arise from ongoing neglect of maintenance.

Emergency maintenance and repairs such as required following a storm event may be exempt under other standard exemptions such as #1 (Maintenance and Cleaning) and #2 (Repairs). More intrusive means of upgrading security which may damage significant fabric will require the submission of an application under section 60 of the Heritage Act.

Development in accordance with this exemption must be undertaken with minimal intervention to significant fabric.

STANDARD EXEMPTION 17: MOVABLE HERITAGE ITEMS

1. The temporary relocation of movable heritage items, including contents, fixtures and objects, to ensure their security, maintenance and preservation, for conservation or exhibition, to ensure health or safety, the need for a controlled environment for those heritage items, or to protect the place, and which are to be returned to their present location within six months, does not require approval under subsection 57(1) of the Act.
2. A person proposing to relocate a movable heritage item as set out in paragraph 1 must advise the Director-General in writing of the proposed location and the reasons for its relocation. If the Director-General is satisfied that the temporary relocation meets the criteria set out in paragraph 1 the Director-General shall notify the applicant.

Guidelines

Movable heritage items or objects which are listed on the State Heritage Register must be specifically referred to in the gazetted listing. Unless specifically listed, the movable content of buildings such as furniture, paintings and other decoration is not movable heritage for the purposes of the Heritage Act which triggers approval requirements to “move, damage or destroy it”.

The permanent relocation of an item of movable heritage such as listed ships or railway rolling stock will require the submission of an application under section 60 of the Heritage Act.

Additional advice regarding movable heritage is provided by:

- *Objects in Their Place: An Introduction to Movable Heritage, NSW Heritage Council, 1999; and*
- *Movable Heritage Principles, NSW Heritage Council and Ministry for the Arts, 1999.*

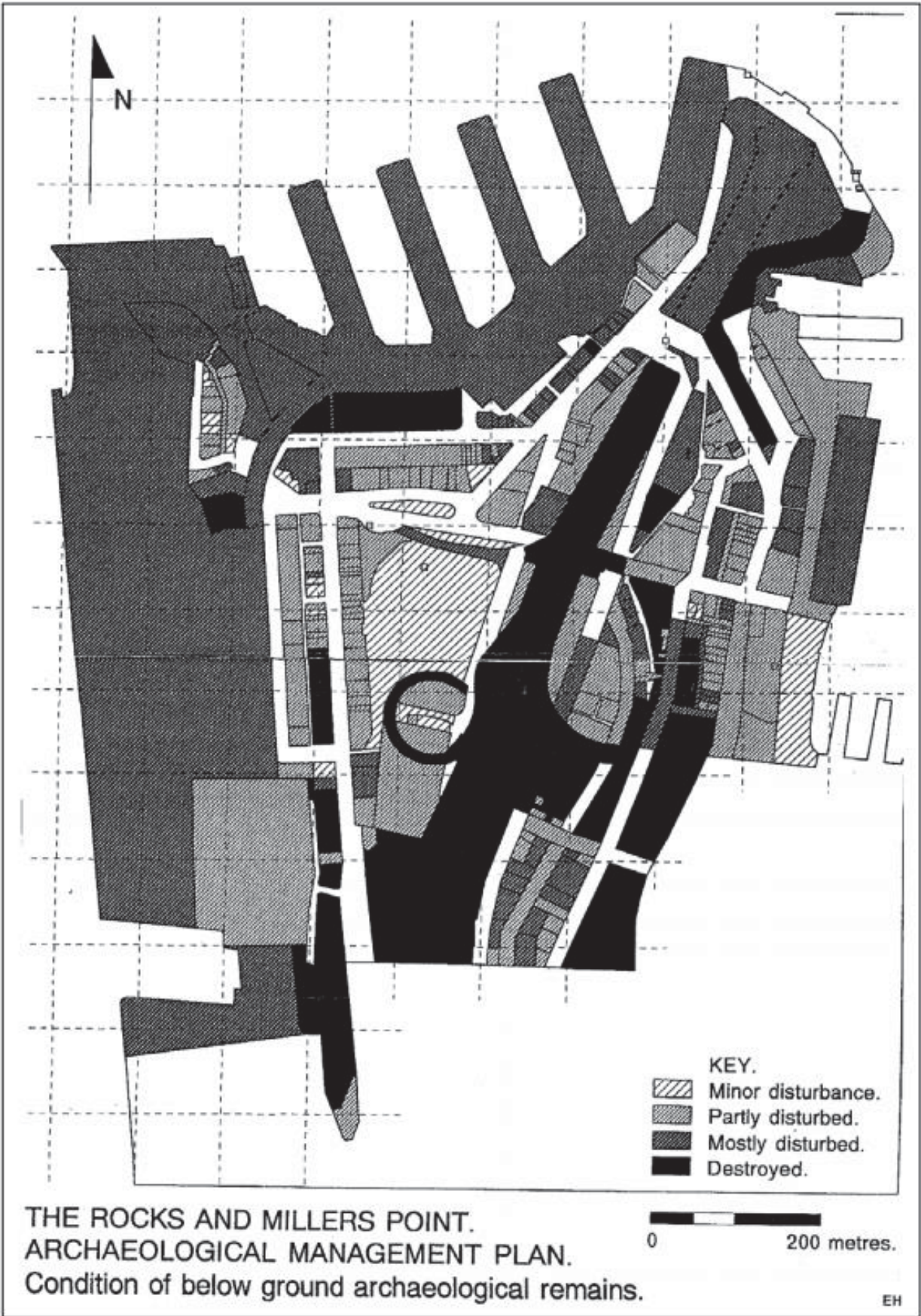
END

Appendix D

NSW Heritage Act, Minimum Standards of Maintenance and Repair, s.118

Appendix E

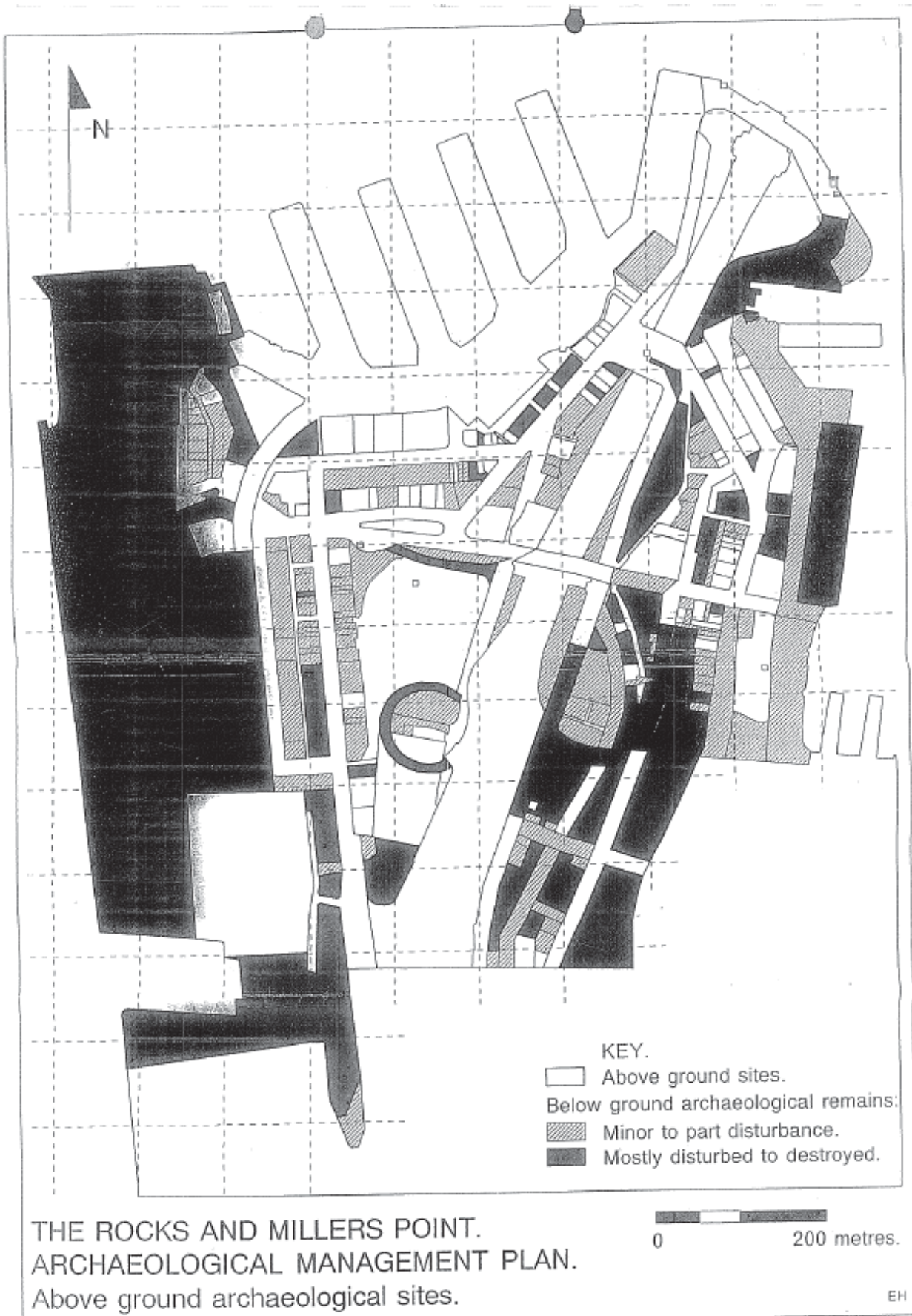
The Rocks and Millers Point Archaeological Management Plan 1991 – Condition of Below Ground Archaeological Remains Map



Source: *The Rocks and Millers Point Archaeological Plan*, 1991(Higginbotham, T Kass & M Walker)

Appendix F

The Rocks and Millers Point Archaeological Management Plan – Above Ground Archaeological Sites Map



Source: *The Rocks and Millers Point Archaeological Plan*, 1991(Higginbotham, T Kass & M Walker)

Abbreviations and Definitions

Common abbreviations and definitions used throughout the report are provided in the table below:

TABLE 17 – ABBREVIATIONS

ABBREVIATION	DEFINITION
BCA	Building Code of Australia
CMP	Conservation Management Plan
EMP	Environmental Management Plan
LEP	Local Environmental Plan
HAMS	Heritage Asset Management Strategy
HMF	Heritage Management Framework
REF	Review of Environmental Factors
RNE	Register of the National Estate
S170R	Section 170 Heritage and Conservation Register (under the <i>Heritage Act 1977</i>)
SEPP	State Environmental Planning Policy
SHR	State Heritage Register of New South Wales (under the <i>Heritage Act 1977</i>)
TAMP	Total Asset Management Plan

TABLE 18 – TERMS

TERM	DEFINITION
Aboriginal object	A statutory term meaning any deposit, object or material evidence (not being a handcraft made for sale) relating to the Aboriginal habitation of the area that comprises New South Wales, being habitation before or concurrent with (or both) the occupation of that area by persons of non- Aboriginal extraction, and includes Aboriginal remains
Aboriginal place	A statutory term meaning any place declared to be an Aboriginal place (under s.84 of the <i>National Parks and Wildlife Act 1974</i>) by the Minister administering the NPW Act, because the Minister is of the opinion that the place is or was of special significance with respect to Aboriginal culture; it may or may not contain Aboriginal objects
Archaeological assessment	A study undertaken to establish the archaeological significance (research potential) of a particular site and to identify appropriate management actions
Archaeological potential	The degree of physical evidence present on an archaeological site, usually assessed on the basis of physical evaluation and historical research
Archaeology	The study of past human cultures, behaviours and activities through the recording and excavation of archaeological sites and the analysis of physical evidence
Australia ICOMOS	The national committee of the International Council on Monuments and Sites
Burra Charter	Charter adopted by Australia ICOMOS, which establishes the nationally accepted principles for the conservation of places of cultural significance; Although the <i>Burra Charter</i> is not cited formally in an Act, it is nationally recognised as a document that shapes the policies of the Heritage Council of NSW
Conservation	All the processes of looking after an item so as to retain its cultural significance; it includes maintenance and may, according to circumstances, include preservation, restoration, reconstruction and adaptation, and will be commonly a combination of more than one of these

TERM	DEFINITION
Conservation Management Plan	A document explaining the significance of a heritage item, including a heritage conservation area, and proposing policies to retain that significance; it can include guidelines for additional development or maintenance of the place
Conservation policy	A proposal to conserve a heritage item arising out of the opportunities and constraints presented by the statement of heritage significance and other considerations
Context	The specific character, quality, physical, historical and social characteristics of a building's setting; depending on the nature of the proposal, the context could be as small as a road or entire suburb
Curtilage	The geographical area that provides the physical context for an item, and which contributes to its heritage significance; land title boundaries do not necessarily coincide
Heritage and Conservation Registers	A register of heritage assets owned, occupied or controlled by a State agency, prepared in accordance with section 170 of the Heritage Act
Heritage assets	Items of heritage significance identified in a State Government Agency's Heritage and Conservation Register, including items of cultural and natural significance
Heritage Asset Management Strategy	A strategy prepared by a State Government Agency to document how the principles and guidelines outlined in the <i>Management of Heritage Assets by NSW Government Agencies</i> will be implemented in the management of heritage assets
Heritage item	A landscape, place, building, structure, relic or other work of heritage significance
Heritage significance	Of aesthetic, historic, scientific, cultural, social, archaeological, natural or aesthetic value for past, present or future generations
Heritage value	Often used interchangeably with the term 'heritage significance'; there are four nature of significance values used in heritage assessments (historical, aesthetic, social and technical/research) and two comparative significance values (representative and rarity)
Integrity	A heritage item is said to have integrity if its assessment and statement of significance is supported by sound research and analysis, and its fabric and curtilage and still largely intact
Interpretation	Interpretation explains the heritage significance of a place to the users and the community; the need to interpret heritage significance is likely to drive the design of new elements and the layout or planning of the place
Maintenance	Continuous protective care of the fabric and setting of a place; to be distinguished from repair; repair involves restoration or reconstruction
Relics	Relic is defined under the Heritage Act 1977 (NSW) as any deposit, object or material evidence which relates to the settlement of the area that comprises NSW, not being Aboriginal settlement, and is of state or local heritage significance
Scar trees	Scarred trees have scars where a section of bark was removed by Aboriginal people in order to make canoes, shields or baskets; footsteps were also cut into the tree trunk to gain access to possums or honey in tree tops; scar trees are different to carved trees
Setting	The area around a heritage place or item that contributes to its heritage significance, which may include views to and from the heritage item; the listing boundary or curtilage of a heritage place does not always include the whole of its setting
Shell middens	Term is referred to in Australia as an archaeological deposit in which shells are the predominant visible cultural items; shells are principally the remains of past meals; some middens also consist of bones, stone and other artefacts
Total Asset Management Policy	Total Asset Management is a NSW Government policy introduced to achieve better planning and management of the State's assets. Total Asset Management is the strategic management of physical assets to best support the delivery of agency services. It is part of a planning framework in which the Government's social, ecological and financial service outcomes are achieved by the most efficient means and within the resource limits of the community. It provides a structured and systematic resource allocation approach to infrastructure and physical asset management so that resources are aligned with the

TERM	DEFINITION
	service objectives of State agencies. This approach achieves reduced costs and best value for money.
Use	Means the functions of a place, as well, as the activities and the practices that may occur at the place; a compatible use respects the cultural significance of a place

Disclaimer

This report is dated October 2015 and incorporates information and events up to that date only and excludes any information arising, or event occurring, after that date which may affect the validity of Urbis Pty Ltd's (**Urbis**) opinion in this report. Urbis prepared this report on the instructions, and for the benefit only, of Urbis Pty Ltd (**Instructing Party**) for the purpose of Conservation Management Plan (**Purpose**) and not for any other purpose or use. To the extent permitted by applicable law, Urbis expressly disclaims all liability, whether direct or indirect, to the Instructing Party which relies or purports to rely on this report for any purpose other than the Purpose, and to any other person which relies or purports to rely on this report for any purpose whatsoever (including the Purpose).

In preparing this report, Urbis was required to make judgements which may be affected by unforeseen future events, the likelihood and effects of which are not capable of precise assessment.

All surveys, forecasts, projections and recommendations contained in or associated with this report are made in good faith and on the basis of information supplied to Urbis at the date of this report, and upon which Urbis relied. Achievement of the projections and budgets set out in this report will depend, among other things, on the actions of others over which Urbis has no control.

In preparing this report, Urbis may rely on or refer to documents in a language other than English, which Urbis may arrange to be translated. Urbis is not responsible for the accuracy or completeness of such translations and disclaims any liability for any statement or opinion made in this report being inaccurate or incomplete arising from such translations.

Whilst Urbis has made all reasonable inquiries it believes necessary in preparing this report, it is not responsible for determining the completeness or accuracy of information provided to it. Urbis (including its officers and personnel) is not liable for any errors or omissions, including in information provided by the Instructing Party or another person or upon which Urbis relies, provided that such errors or omissions are not made by Urbis recklessly or in bad faith.

This report has been prepared with due care and diligence by Urbis and the statements and opinions given by Urbis in this report are given in good faith and in the reasonable belief that they are correct and not misleading, subject to the limitations above.

Sydney
Level 23, Darling Park Tower 2
201 Sussex Street
Sydney, NSW 2000
t 02 8233 9900
f 02 8233 9966

Melbourne
Level 12, 120 Collins Street
Melbourne, VIC 3000
t 03 8663 4888
f 03 8663 4999

Brisbane
Level 7, 123 Albert Street
Brisbane, QLD 4000
t 07 3007 3800
f 07 3007 3811

Perth
Level 1, 55 St Georges Terrace
Perth, WA 6000
t 08 9346 0500
f 08 9221 1779

Australia • Asia • Middle East
urbis.com.au
info@urbis.com.au

