

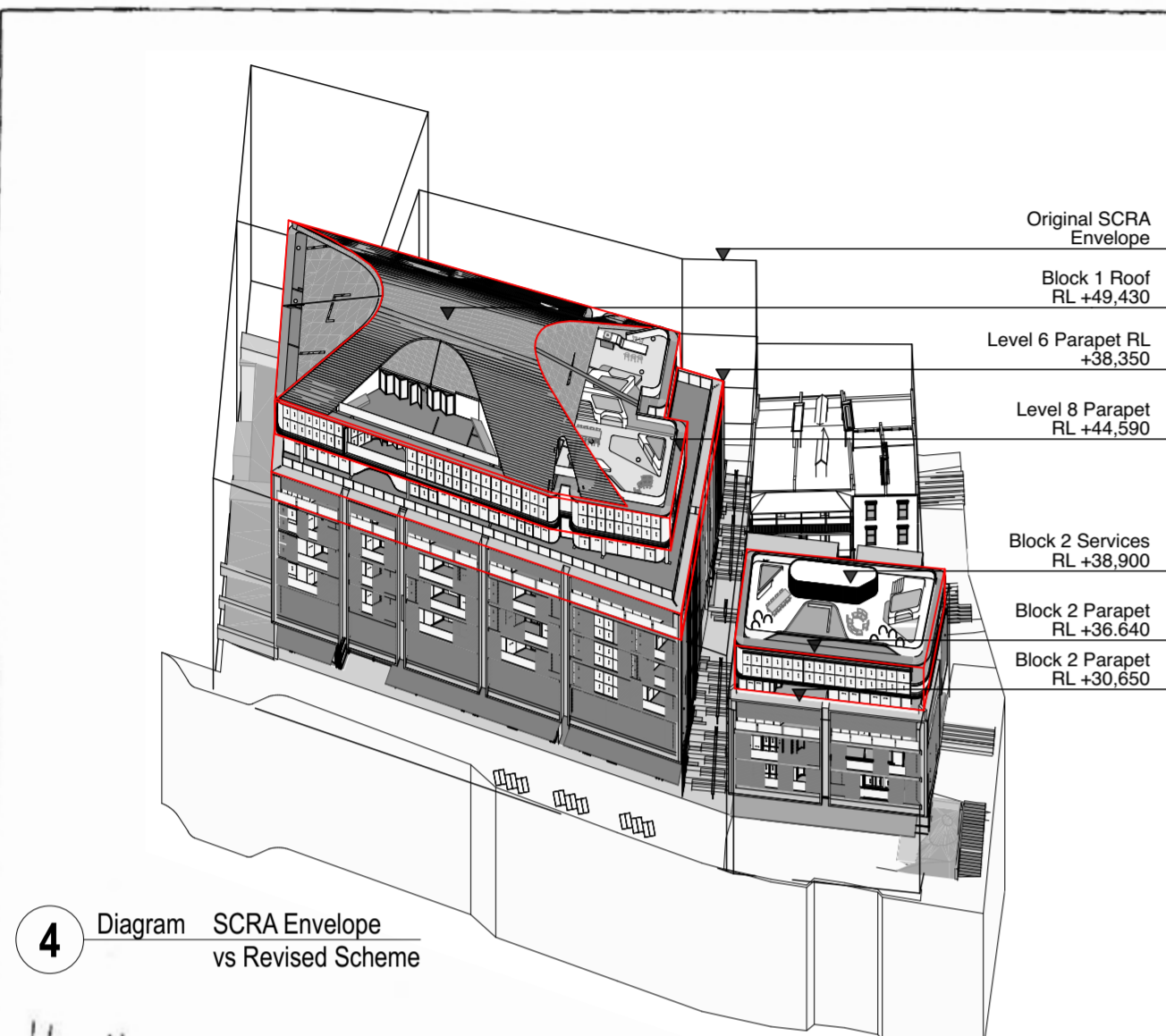
GENERAL NOTES
 ALL DIMENSIONS AND EXISTING CONDITIONS SHALL BE CHECKED AND VERIFIED BY THE CONTRACTOR BEFORE PROCEEDING WITH THE WORK
 ALL LEVELS RELATIVE TO 'AUSTRALIAN HEIGHT DATUM'
 DO NOT SCALE DRAWINGS. USE FIGURED DIMENSIONS ONLY

LEGEND

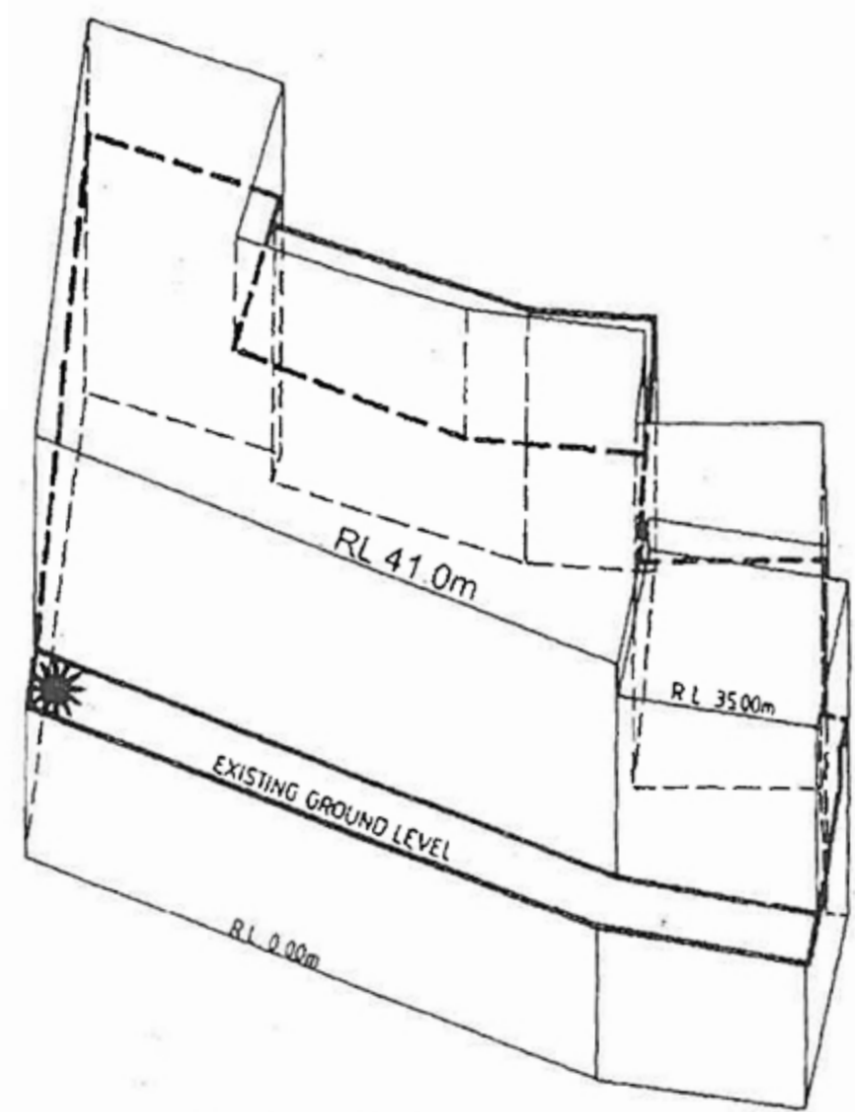
1 BED
2 BED 2 BATH
3 BED
TOWNHOUSE
LOBBY
COMMERCIAL
LIVE/ WORK
RETAIL

- Adaptable Apartment
- Cross Ventilation Path
- Solar Compliant Apartment
- Solar Compliant Balcony

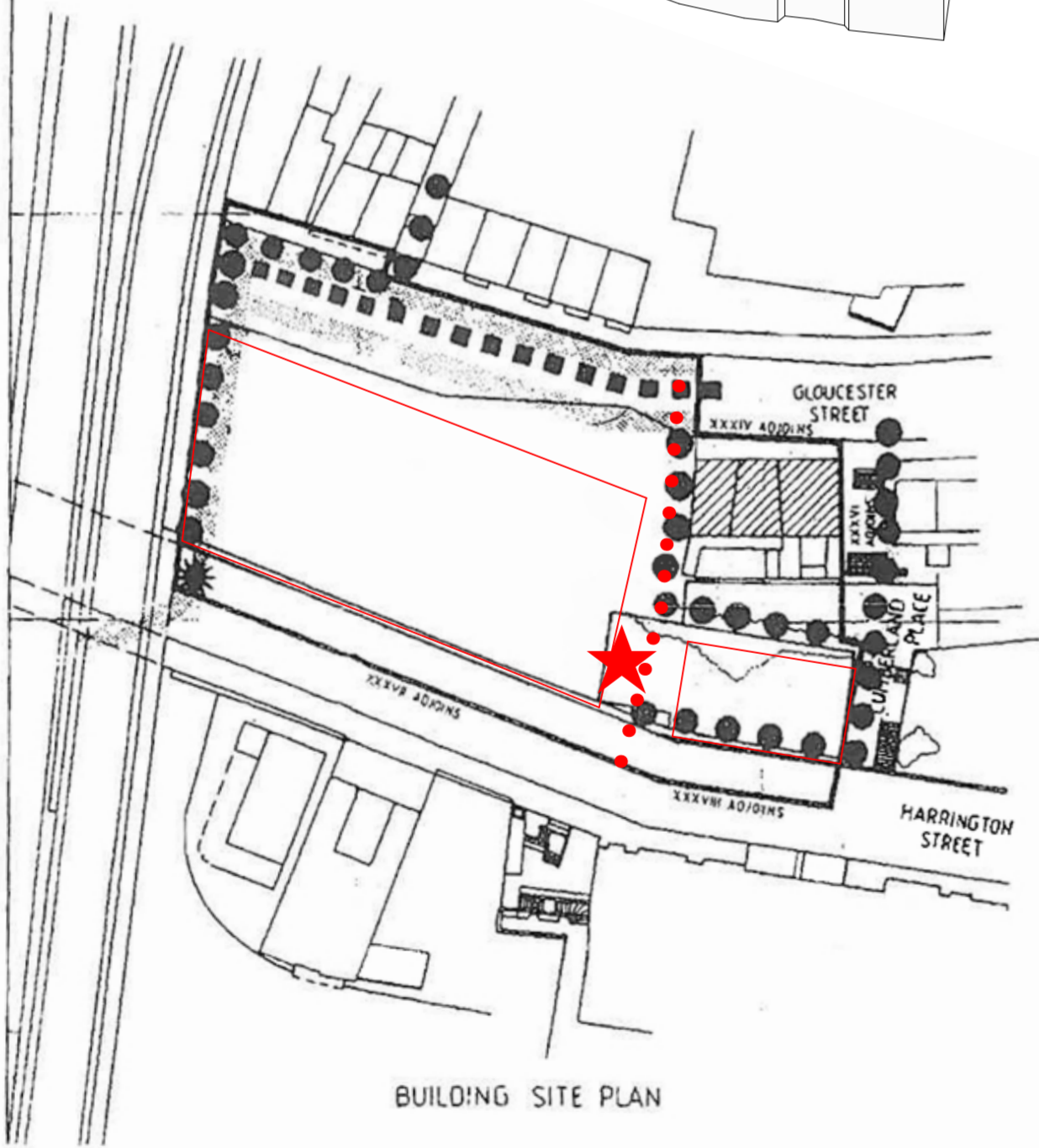
- AL1 Powdercoated Aluminium Panel 1
- AL2 Powdercoated Aluminium Panel 2
- ALP Aluminium Composite Panel
- BAL1 Glazed Balustrade 1
- BAL2 Glazed Balustrade 2
- BAL3 Aluminium Plate Balustrade
- BYRK1 Bicycle Rack
- GL1 Aluminium Framed Retail Glazing
- GL2 Performance Glazed Aluminium Framed Sliding Door
- GL3 Glazing With White Interlay & Integrated Venetians
- LV1 Sandstone Louvre
- PAV1 Paving 1
- PC1 Precast Concrete 1
- SC1 Perforated Screen
- SC2 Integrated Screen
- SC3 Louvred Screen
- SS1 Sandstone 1
- SS2 Sandstone 2
- TC1 Terracotta Cladding 1
- TC2 Terracotta Cladding 2
- TC3 Terracotta Cladding 3
- TIM Timber Composite Panel



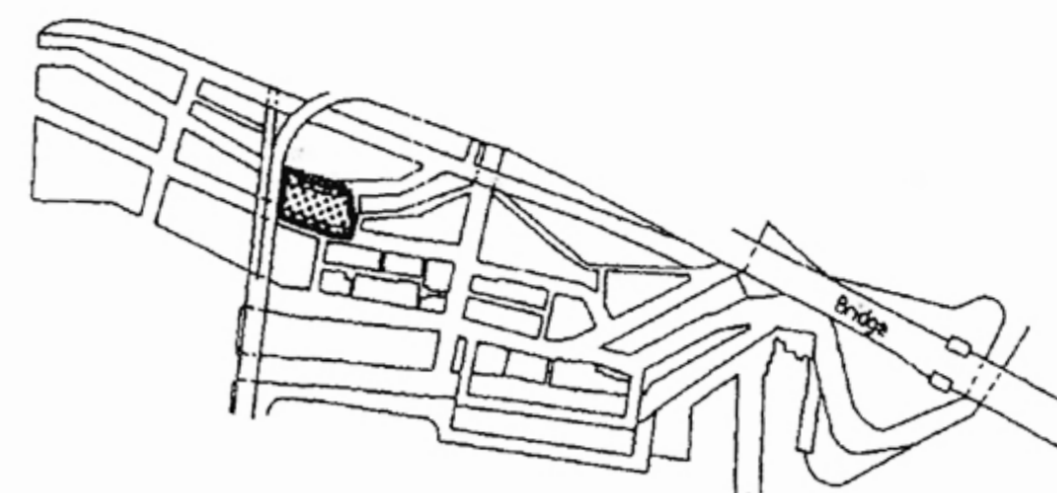
4 Diagram SCRA Envelope vs Revised Scheme



BUILDING ENVELOPE
 AXONOMETRIC DRAWING



BUILDING SITE PLAN



LEGEND

- SITE BOUNDARY
- EASEMENT
- HISTORIC BUILDINGS
- PEDESTRIAN ROUTE
- VEHICLE ROUTE

PERMITTED USES

- COMMERCIAL
- RESIDENTIAL
- SPECIAL

PUBLIC LIFT TO MAXIMUM OF SCRA RL 34.0

PROPOSED NEW PEDESTRIAN LINK

PROPOSED LOCATION FOR NEW PUBLIC ELEVATOR

I, _____ the Minister for Planning being the minister responsible for administering the Environmental Planning and Assessment Act (Sydney Cove) Savings and Transitional Regulations 1999 hereby pursuant to clause 9 of the Regulation approve the variation to the approved scheme evidenced by this control drawing

Date

The general controls as shown on the drawing are subject to refinement of detail in relation to dimensions, easements, useages, open spaces and means of circulation and the sites shall be subject to such further conditions in relation to architectural details, financial considerations, staging and timing and system of approvals as the Authority may deem necessary and make known prior to the sites being offered for development.

BUILDING SITE CONTROL DRAWING XXXV-A
 30 METRES

SYDNEY HARBOUR FORESHORE AUTHORITY

Prepared by _____ AUGUST 2007

P	11/8/17	DA Submission	IS
---	---------	---------------	----

REVISION	DATE	DESCRIPTION	BY

fjmt
 francis-jones morehen thorp

SYDNEY
 Level 5, 70 King Street
 Sydney NSW 2000 Australia
 T +61 2 9251 7077
 F +61 2 9251 7072
 E fjmt@fjmt.com.au
 W www.fjmt.com.au

NOMINATED ARCHITECT: RICHARD FRANCIS-JONES (REG NO 5301)

PROJECT
 85 Harrington Street
 The Rocks
 GOLDEN AGE & HANNAS THE ROCKS

TITLE
 Diagrams
 SCRA Envelope Comparison

SCALE	PROJECT CODE
DATE 11/8/17	GA85H
SHEET NO. DA-5110	REVISION P

For Information