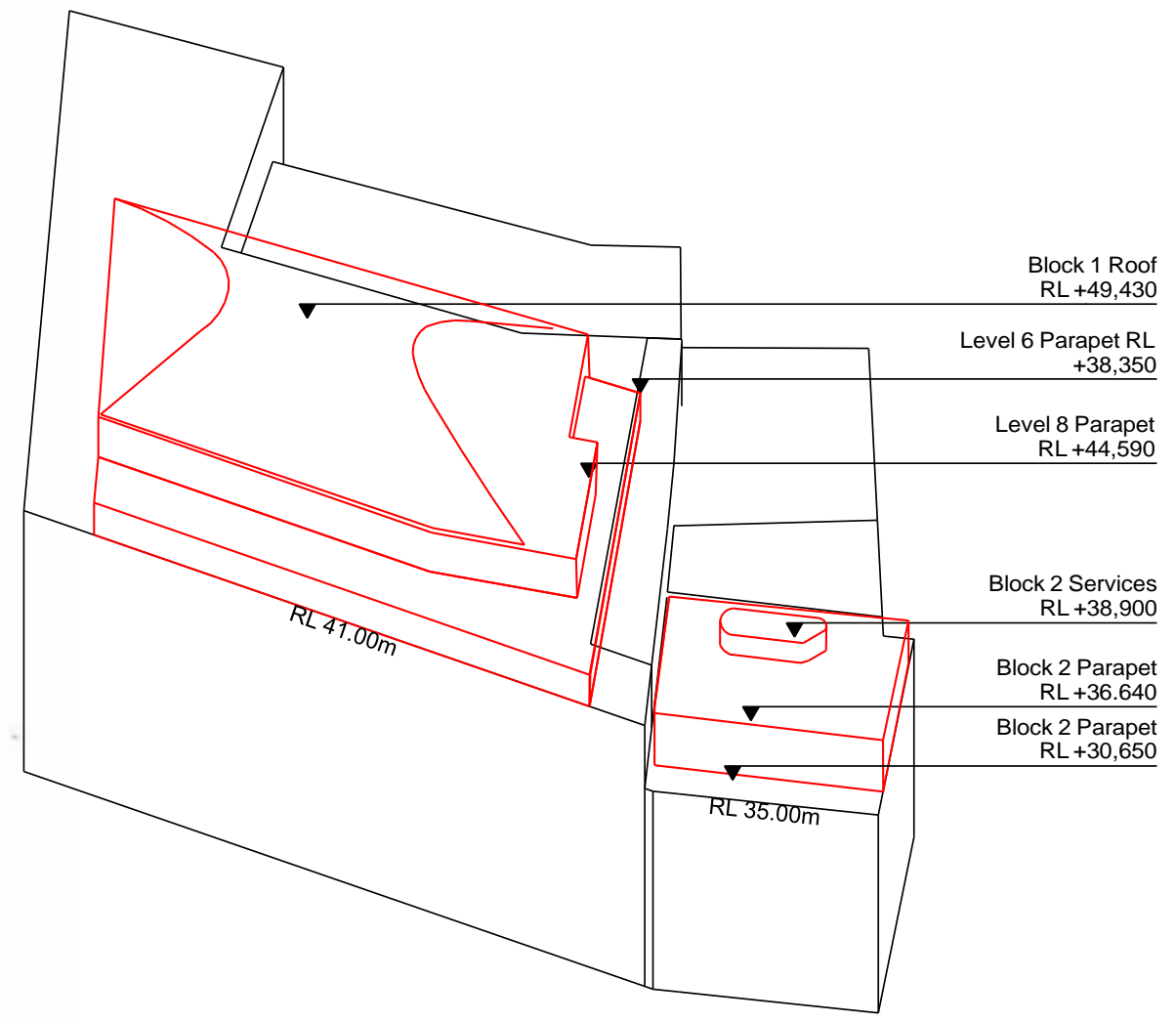
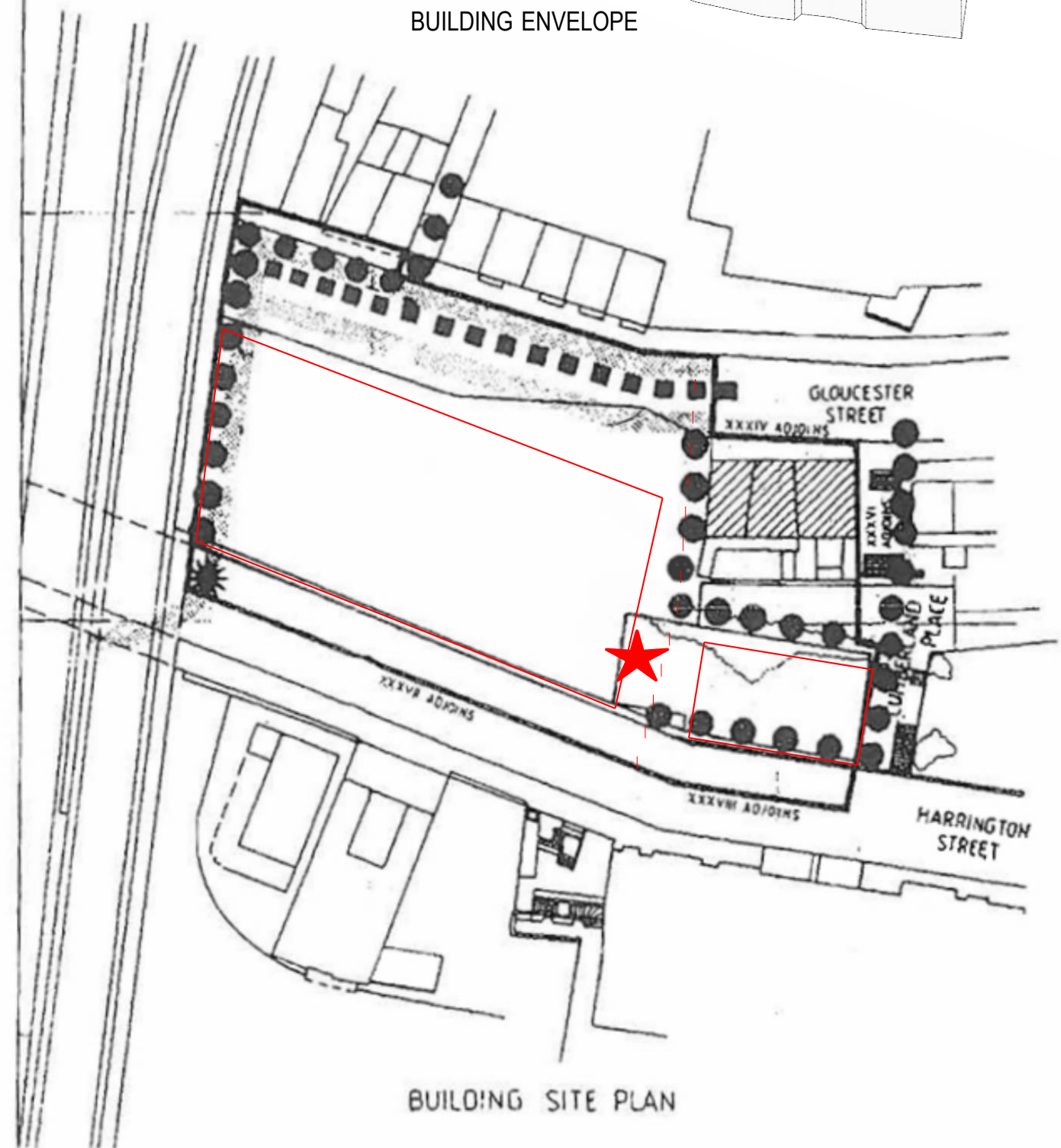


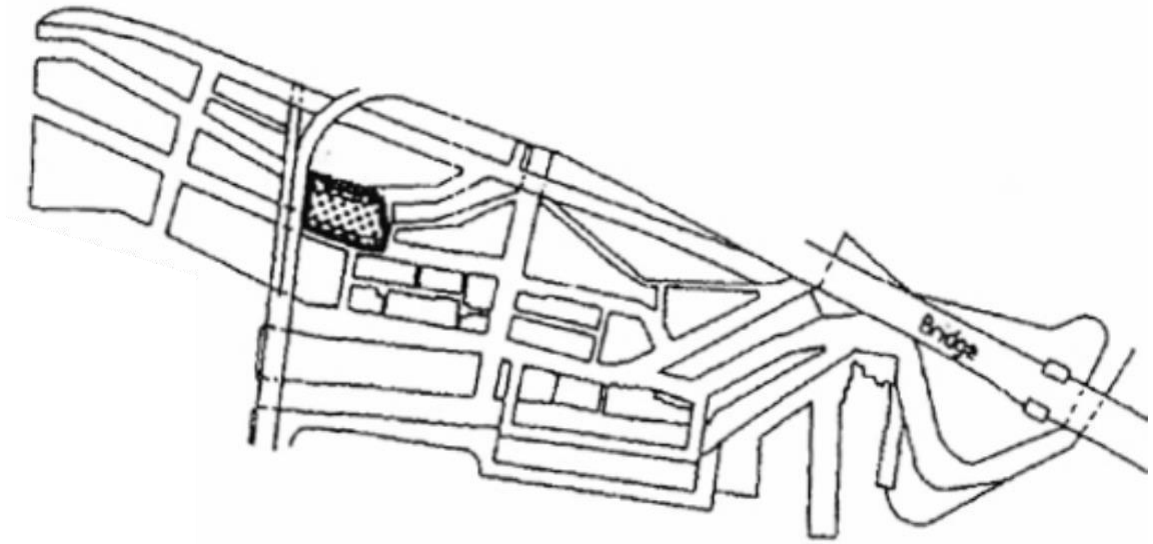
4 Diagram SCRA Envelope vs Revised Scheme

BUILDING ENVELOPE



BUILDING ENVELOPE

AXONOMETRIC DRAWING



This drawing refers to the land shaded

LEGEND

- SITE BOUNDARY
- EASEMENT
- HISTORIC BUILDINGS
- PEDESTRIAN ROUTE
- VEHICLE ROUTE

PERMITTED USES

- COMMERCIAL
- RESIDENTIAL
- SPECIAL

PUBLIC LIFT TO MAXIMUM OF SCRA RL 34.0

NEW PEDESTRIAN LINK

NEW PUBLIC ELEVATOR

We, the Planning Assessment Commission as delegate of the Minister for Planning, under delegation dated 28 February 2016, pursuant to clause 9 of the *Environmental Planning and Assessment (Sydney Cove) Savings and Transitional Regulation 1999*, under the *Environmental Planning and Assessment Act 1979*, approve the variation to the Prescribed Scheme, described by the Control Drawing.

Planning Assessment Commission

S. O'Connor
Lynelle Ziegler

Date

The general controls as shown on the drawing are subject to refinement of detail in relation to dimensions, easements, useages, open spaces and means of circulation and the sites shall be subject to such further conditions in relation to architectural details, financial considerations, staging and timing and system of approvals as the Authority may deem necessary and make known prior to the sites being offered for development.

BUILDING SITE CONTROL DRAWING XXXV-A

30 METRES
SYDNEY HARBOUR FORESHORE AUTHORITY