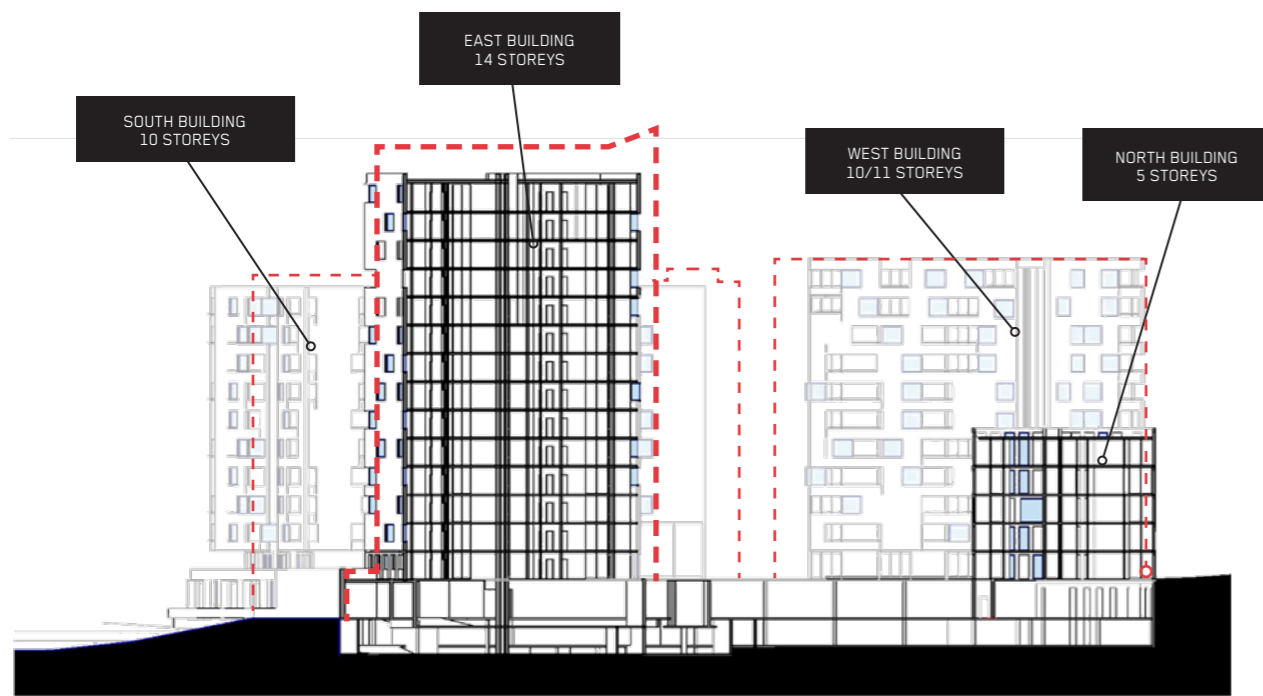


PROPOSAL AND SOPA MASTERPLAN COMPARISON



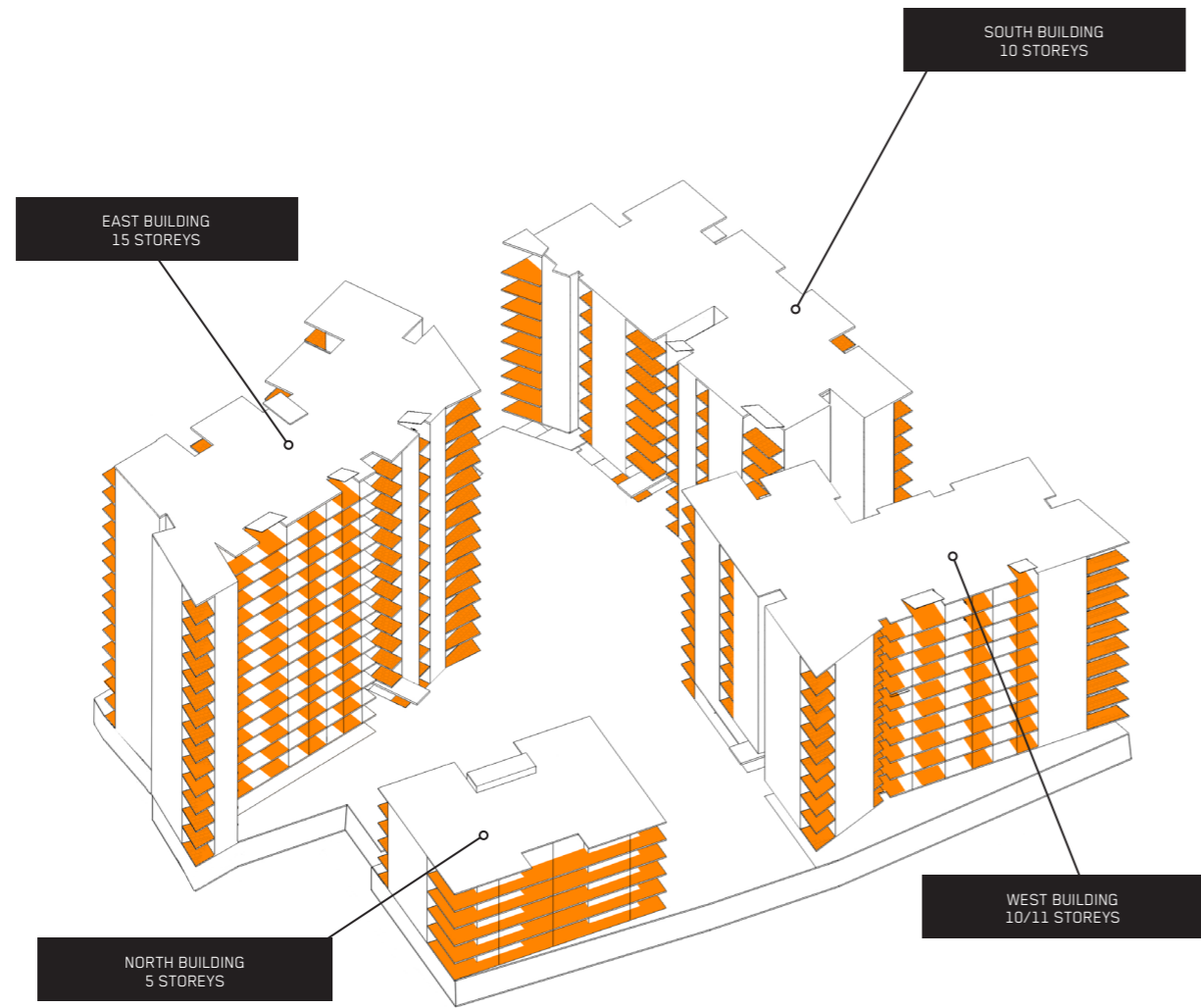
MARCH 2015 DRP SCHEME

The proposed scheme, with adjusted heights and split western building beyond, outlined against the scheme presented to the Design Review Panel in March 2015.

PROPOSED SCHEME

PROPOSED SCHEME

41



PROPOSED MASSING STUDY (VIEW FROM NORTH)



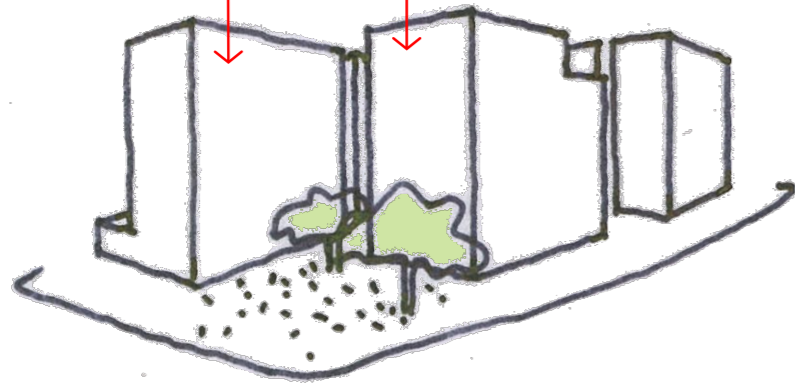
TYPICAL FLOOR PLAN

- 1 Bed
- 2 Bed
- 3 Bed

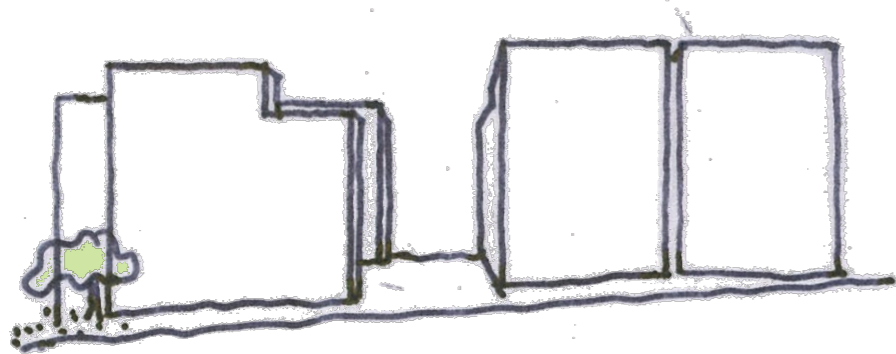
BUILDING HEIGHTS

10 Storeys

10 Storeys

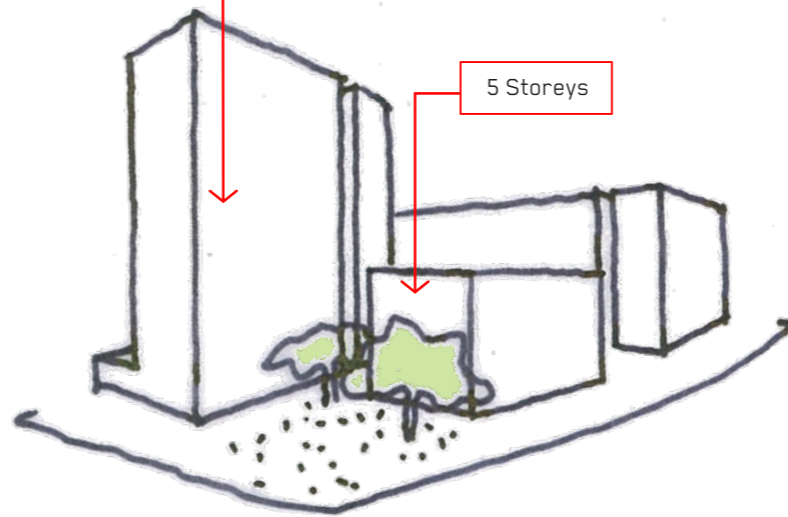


COMPLYING BUILDING HEIGHTS

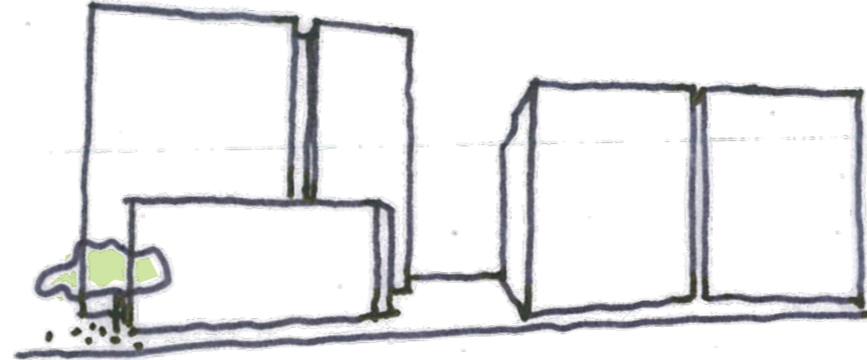


15 Storeys

5 Storeys



PROPOSED DA BUILDING HEIGHTS



VIEW FROM ACROSS FIG TREE DRIVE



VIEW FROM ACROSS FIG TREE DRIVE