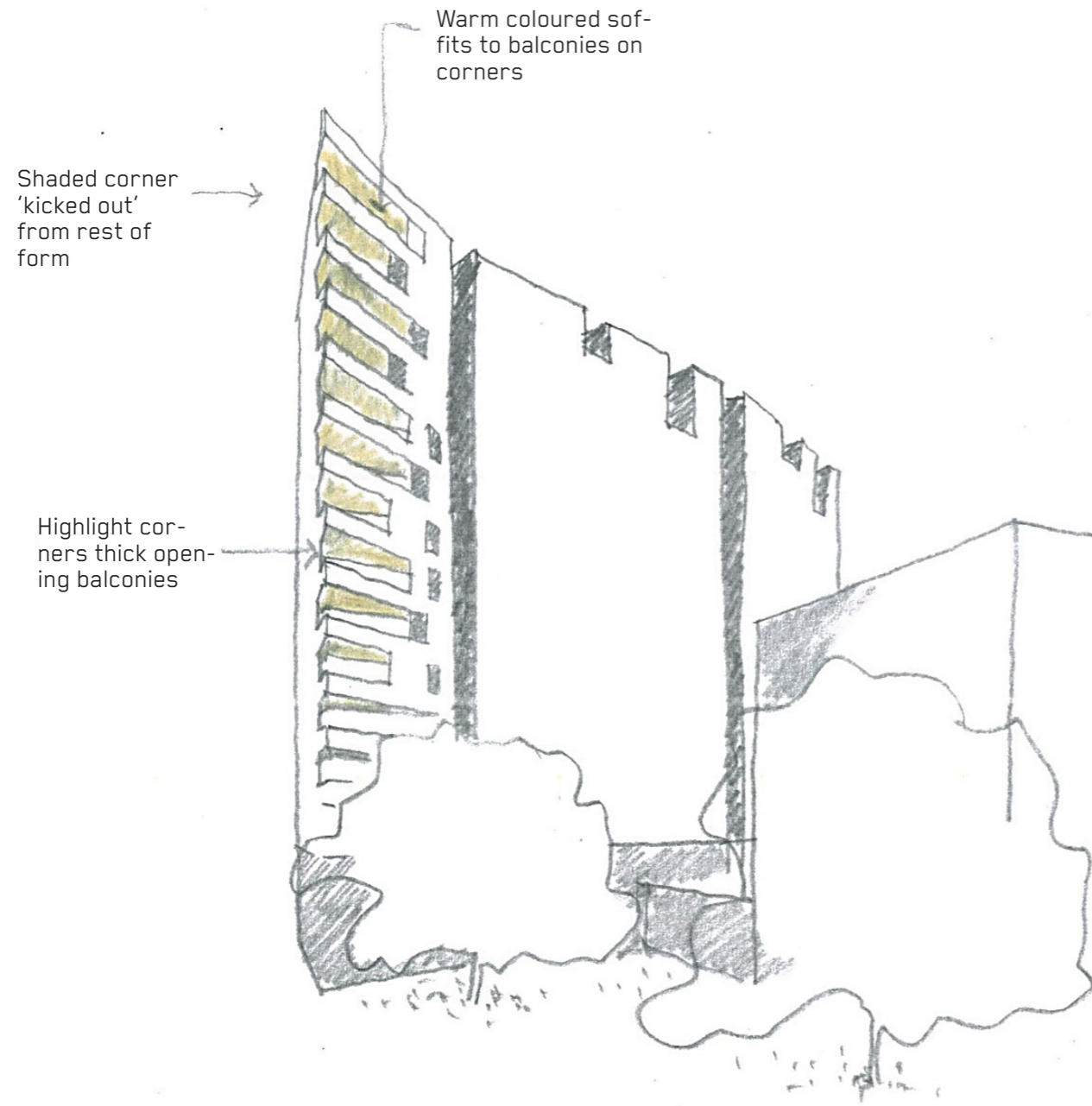


# MATERIALITY AND DETAILING

Proposed materiality for East, South and West buildings.

ISSUE B

SOPA DESIGN REVIEW PANEL PRESENTATION

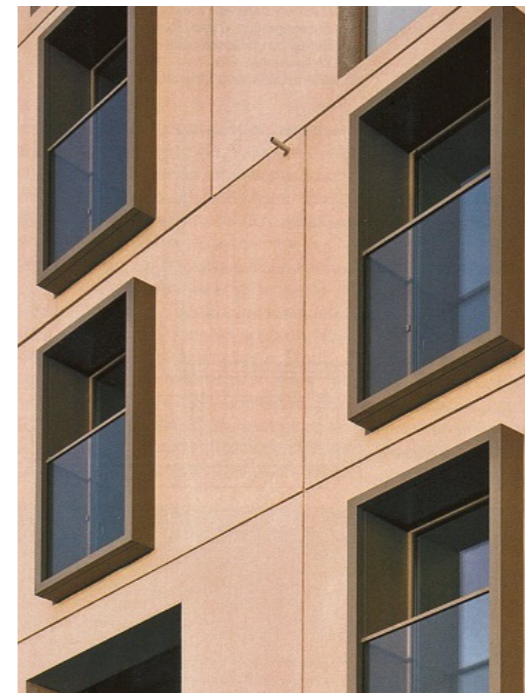


**PERSPECTIVE VIEW FROM CORNER OF AUSTRALIA AVENUE AND FIGTREE DRIVE**  
The built form is broken down using vertical articulation, recessed corner balconies and castellations along the building parapets

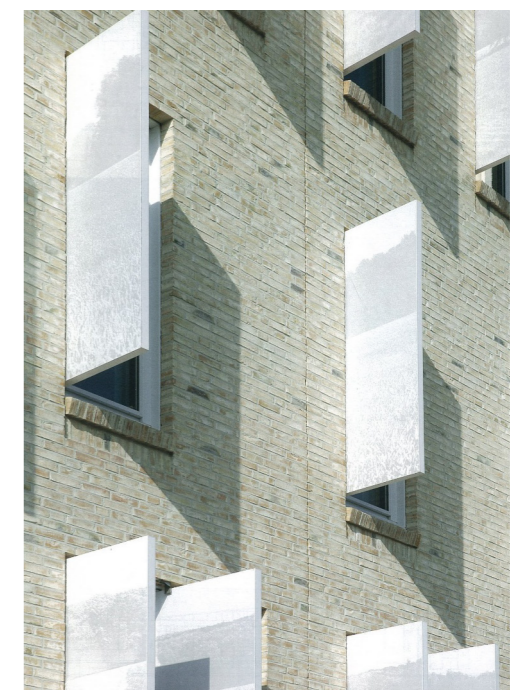
SOPA SITE 53 - SEPTEMBER 2015



**BVN RENDERER**  
Demonstrating facade articulation and warm coloured soffits



**HOUSING BLOCK IN NEU ULM BY ARCHITEKTUBURO WALLNER**  
Possible pop out elements within the facade



**CITY HALL IN BROCKHORST BY ATELIER PRO**  
External vertical blade elements for sunshading and improved amenity between apartments

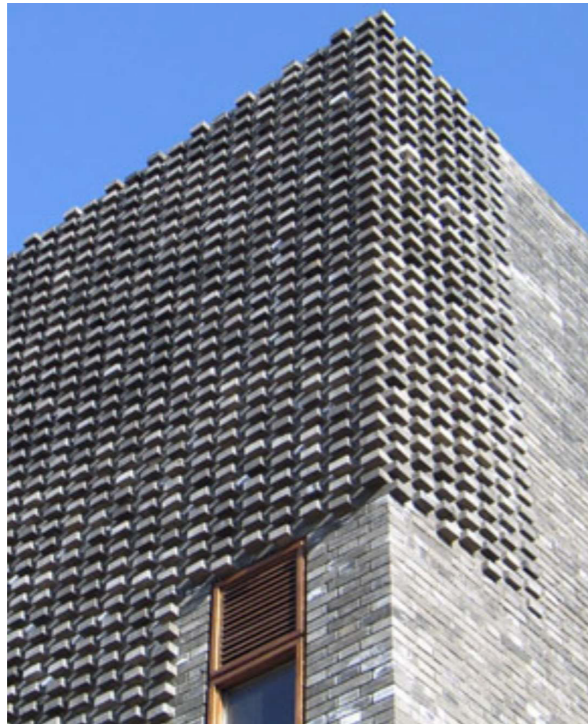
# MATERIALITY AND DETAILING

Proposed materiality for North Building and podium

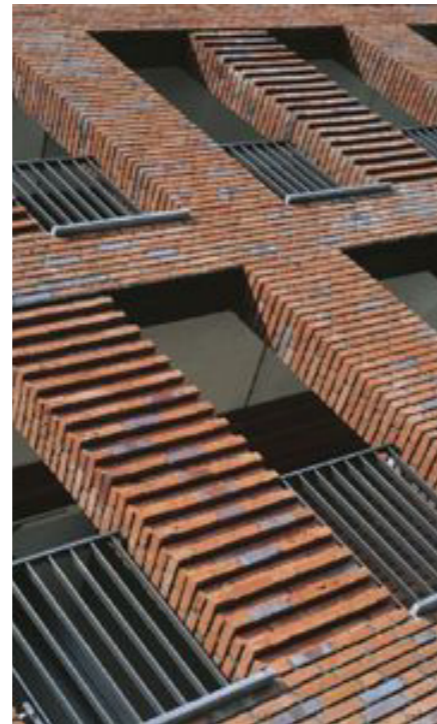
35



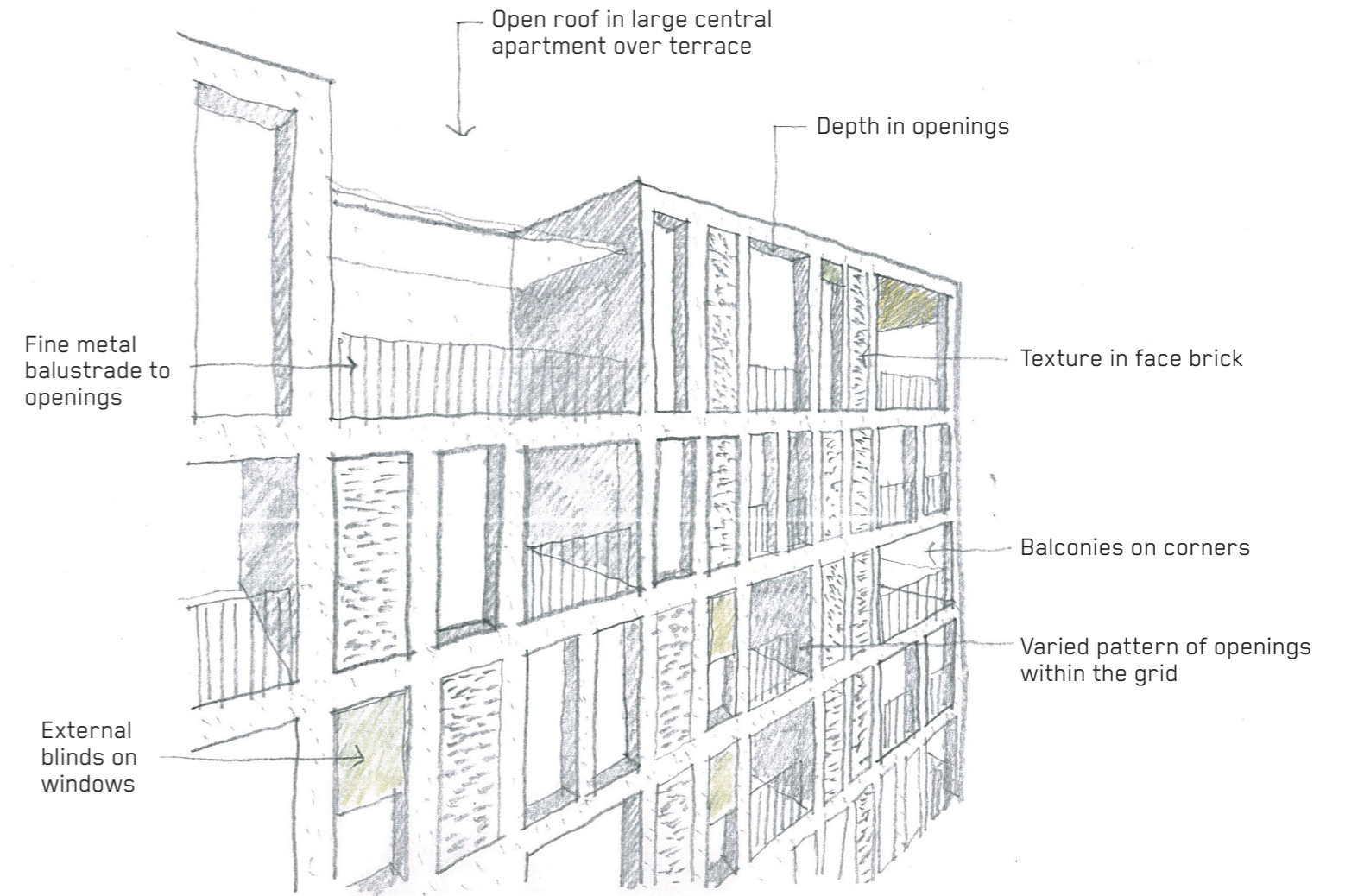
LORONG M TELOK KURAU HOUSE BY A D LAB Pty Ltd  
'Hit and Miss' brickwork



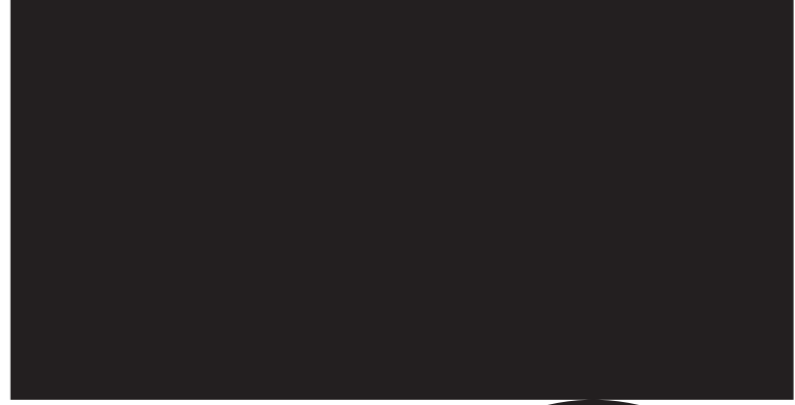
TONGXIAN GATEHOUSE BY Office dA  
Articulated brickwork projections



QUARTIER DAMIANUS BY ENGELMAN ARCHITECTEN  
Textured brickwork



PROPOSED NORTH BUILDING ARTICULATION AND MATERIALITY



# DEVELOPMENT APPLICATION SCHEME

# DEVELOPMENT APPLICATION SCHEME

ISSUE B

DEVELOPMENT APPLICATION SCHEME



SITE ACCESS AND BUILDING ENTRY



GROUND FLOOR ACCESSIBILITY

SOPA SITE 53 - SEPTEMBER 2015