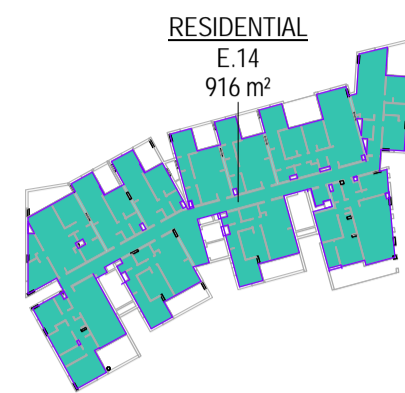


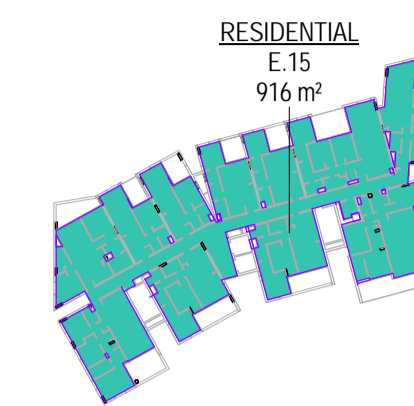
LEVEL 12



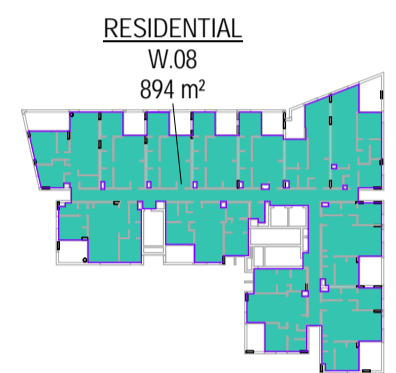
LEVEL 13



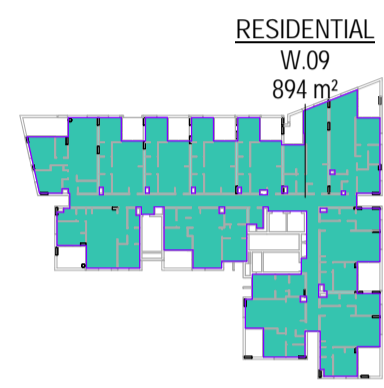
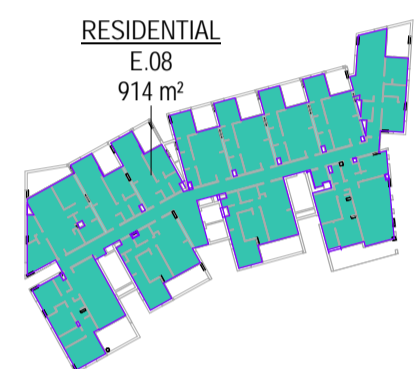
LEVEL 14



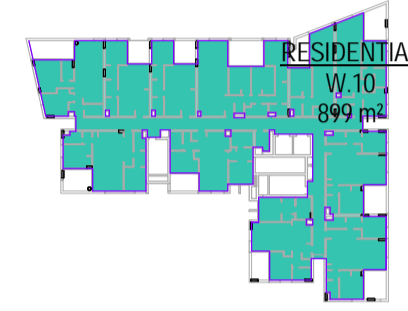
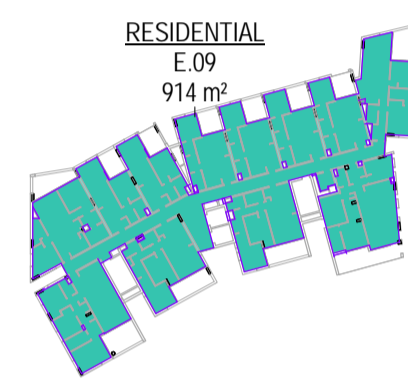
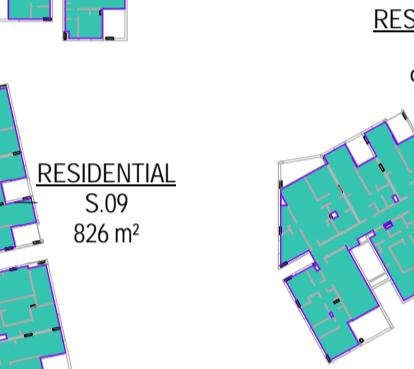
LEVEL 15



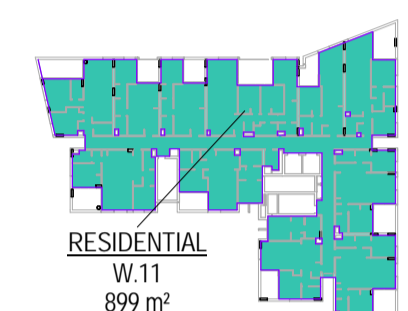
LEVEL 08



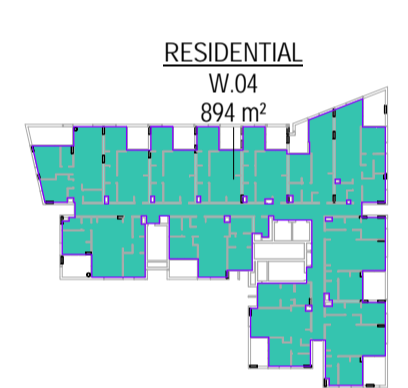
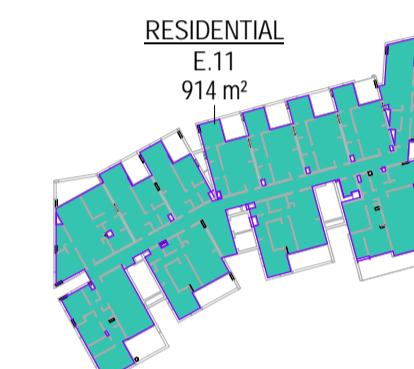
LEVEL 09



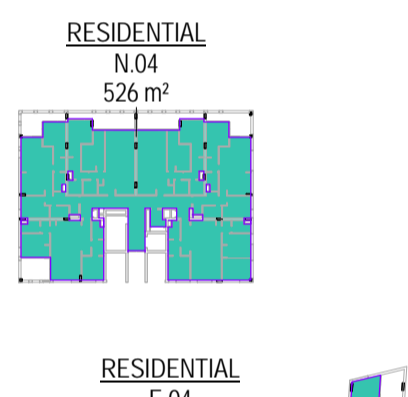
LEVEL 10



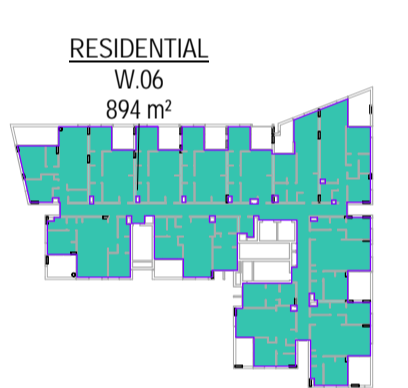
LEVEL 11



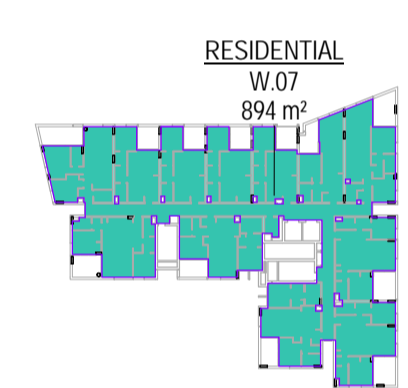
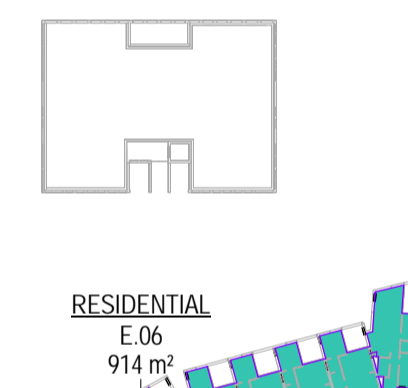
LEVEL 04



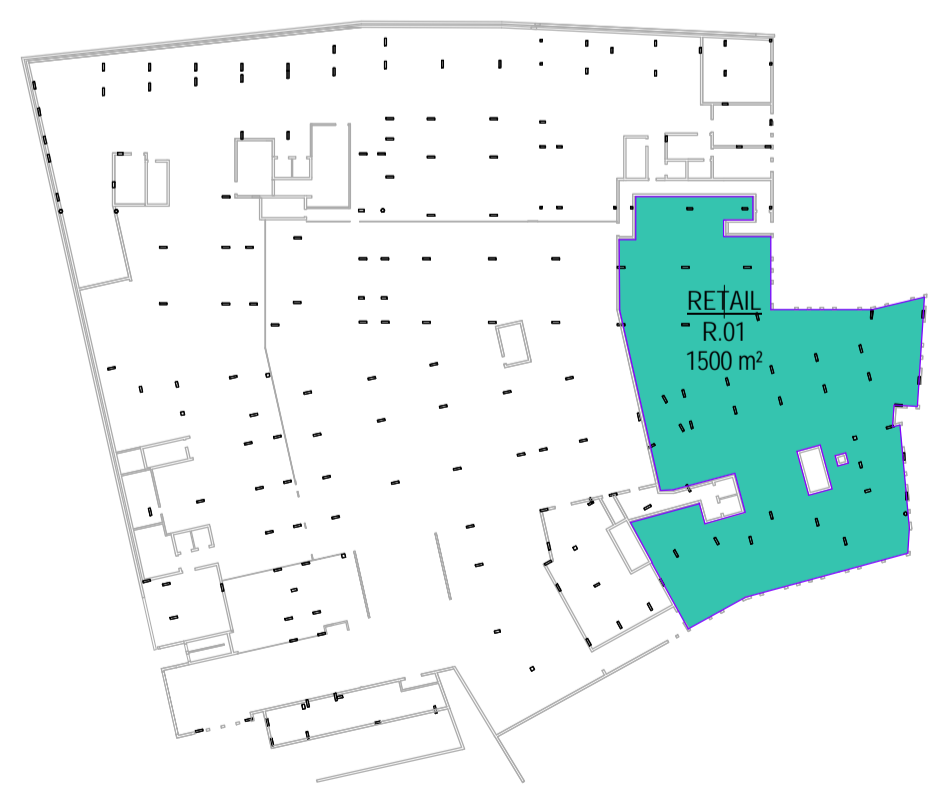
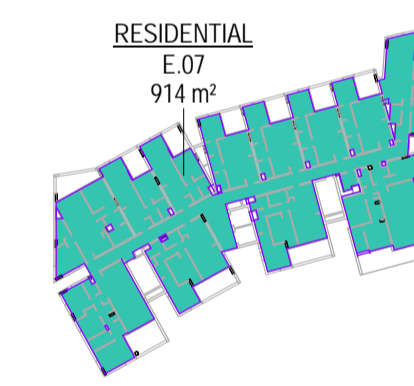
LEVEL 05



LEVEL 06



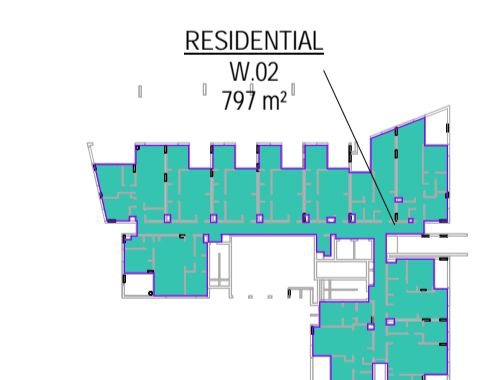
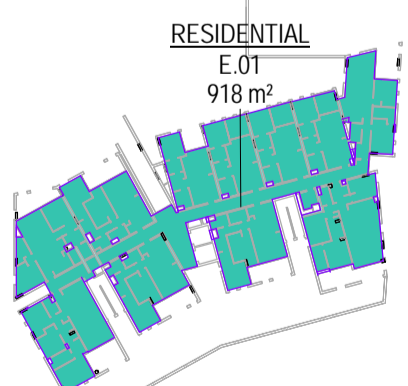
LEVEL 07



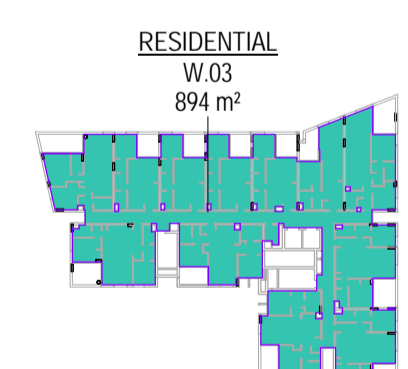
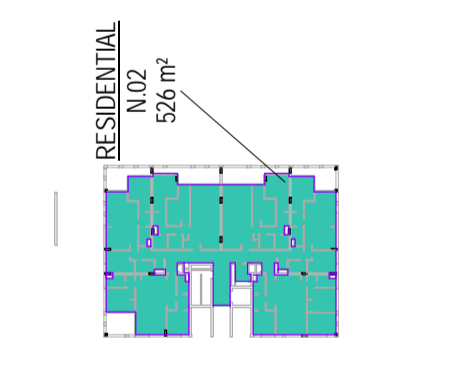
LEVEL 00



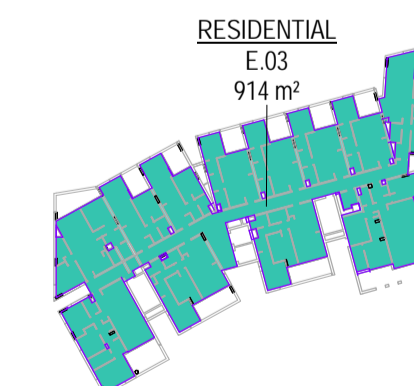
LEVEL 01



LEVEL 02



LEVEL 03



A1 - GFA SCHEDULE			
swc	Name	Number	Area
LEVEL 00			
LEVEL 00	RETAIL	R.01	1500.04
LEVEL 01			
LEVEL 01	RESIDENTIAL	E.01	918.23
LEVEL 01	RESIDENTIAL	N.01	530.04
LEVEL 01	RESIDENTIAL	S.01	556.91
LEVEL 01	RESIDENTIAL	W.01	267.50
LEVEL 01	COMMUNITY RM	W.01	75.47
LEVEL 02			
LEVEL 02	RESIDENTIAL	E.02	885.80
LEVEL 02	RESIDENTIAL	N.02	526.22
LEVEL 02	RESIDENTIAL	S.02	771.34
LEVEL 02	RESIDENTIAL	W.02	797.28
LEVEL 03			
LEVEL 03	RESIDENTIAL	E.03	913.97
LEVEL 03	RESIDENTIAL	N.03	526.22
LEVEL 03	RESIDENTIAL	S.03	813.29
LEVEL 03	RESIDENTIAL	W.03	894.45
LEVEL 04			
LEVEL 04	RESIDENTIAL	E.04	913.97
LEVEL 04	RESIDENTIAL	N.04	526.22
LEVEL 04	RESIDENTIAL	S.04	813.29
LEVEL 04	RESIDENTIAL	W.04	894.45
LEVEL 05			
LEVEL 05	RESIDENTIAL	E.05	913.97
LEVEL 05	RESIDENTIAL	N.05	526.22
LEVEL 05	RESIDENTIAL	S.05	813.29
LEVEL 05	RESIDENTIAL	W.05	894.45
LEVEL 06			
LEVEL 06	RESIDENTIAL	E.06	913.97
LEVEL 06	RESIDENTIAL	S.06	813.29
LEVEL 06	RESIDENTIAL	W.06	894.45
LEVEL 07			
LEVEL 07	RESIDENTIAL	E.07	913.97
LEVEL 07	RESIDENTIAL	S.07	813.29
LEVEL 07	RESIDENTIAL	W.07	894.45
LEVEL 08			
LEVEL 08	RESIDENTIAL	E.08	913.97
LEVEL 08	RESIDENTIAL	S.08	813.29
LEVEL 08	RESIDENTIAL	W.08	894.45
LEVEL 09			
LEVEL 09	RESIDENTIAL	E.09	913.97
LEVEL 09	RESIDENTIAL	S.09	825.77
LEVEL 09	RESIDENTIAL	W.09	894.45
LEVEL 10			
LEVEL 10	RESIDENTIAL	E.10	913.97
LEVEL 10	RESIDENTIAL	S.10	825.77
LEVEL 10	RESIDENTIAL	W.10	898.61
LEVEL 11			
LEVEL 11	RESIDENTIAL	E.11	913.97
LEVEL 11	RESIDENTIAL	W.11	898.61
LEVEL 12			
LEVEL 12	RESIDENTIAL	E.12	913.97
LEVEL 13			
LEVEL 13	RESIDENTIAL	E.13	916.42
LEVEL 14			
LEVEL 14	RESIDENTIAL	E.14	916.42
LEVEL 15			
LEVEL 15	RESIDENTIAL	E.15	916.42
Grand total: 43			34886.09